



F I U V  
TEMPT COLLECTION



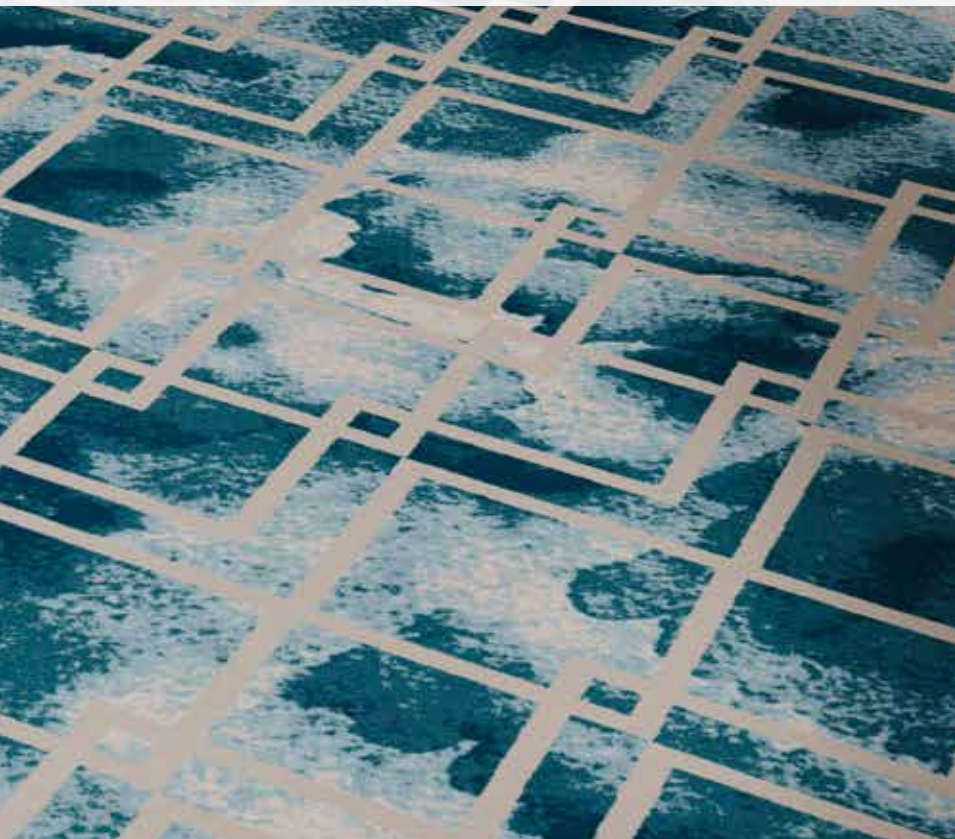
# FLUX







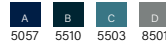
Reflective movement breaks free  
from straight lines and structure.



CORRIDOR

FLUX

# CORRIDOR



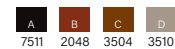
COLOR 168

## PRODUCT SPECIFICATIONS

- Product ID: FL001
- Name: Flux
- Construction: Intrepid – Multi-Level Loop Tip Shear
- Fiber Content: 100% C.F. Lextron Enviro-Green® Solution Dyed Nylon
- Pattern Repeat: 90" x 118"
- Tufted Pile Weight: 42 oz./sq. yd.
- Finished Pile Height: approx. 0.250"/0.187"/0.062"
- Primary Backing: Woven Polypropylene
- Secondary Backing: Unitary w/Actionbac®
- Total Weight: approx. 78 oz./sq. yd.
- Yarn Size: 1360/2 ply
- Guage: 1/10
- Width: 15 ft.
- Radiant Panel: Class 1
- Smoke Density: Less than 450
- Warranty: 10 Year Wear
- Traffic Class: Heavy (Corridor/Public Areas)



COLOR 197



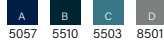
COLOR 146







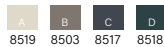
# PUBLIC SPACE



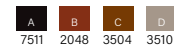
COLOR 268

## PRODUCT SPECIFICATIONS

- Product ID: FL002
- Name: Flux II
- Construction: Intrepid – Multi-Level Loop Tip Shear
- Fiber Content: 100% C.F. Lextron Enviro-Green® Solution Dyed Nylon
- Pattern Repeat: 90" x 90"
- Tufted Pile Weight: 42 oz./sq. yd.
- Finished Pile Height: approx. 0.250"/0.187"/0.062"
- Primary Backing: Woven Polypropylene
- Secondary Backing: Unitary w/Actionbac®
- Total Weight: approx. 78 oz./sq. yd.
- Yarn Size: 1360/2 ply
- Gauge: 1/10
- Width: 15 ft.
- Radiant Panel: Class 1
- Smoke Density: Less than 450
- Warranty: 10 Year Wear
- Traffic Class: Heavy (Corridor/Public Areas)



COLOR 297



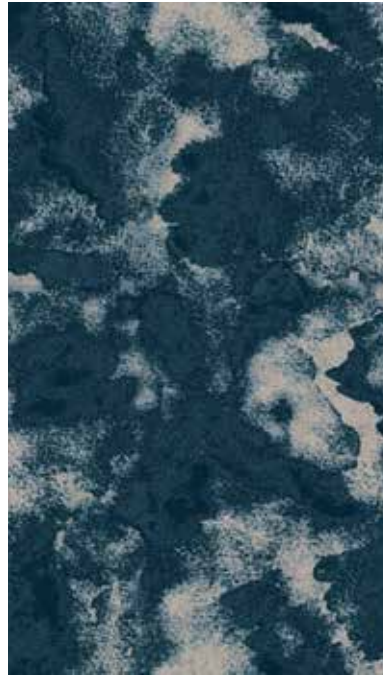
COLOR 246







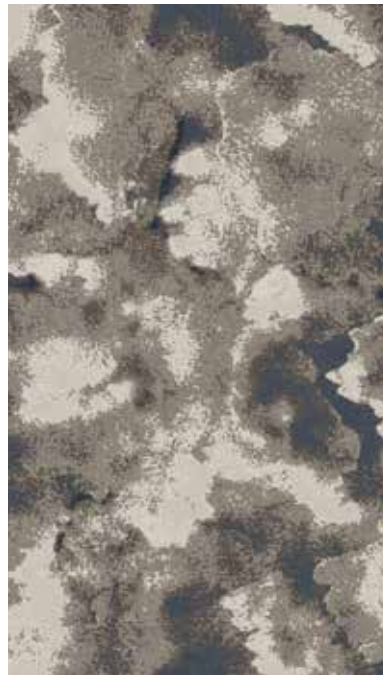
# PUBLIC SPACE



COLOR 268

## PRODUCT SPECIFICATIONS

- Product ID: FL003
- Name: Flux III
- Construction: Intrepid – Multi-Level Loop Tip Shear
- Fiber Content: 100% C.F. Lextron Enviro-Green® Solution Dyed Nylon
- Pattern Repeat: 90" x 118"
- Tufted Pile Weight: 42 oz./sq. yd.
- Finished Pile Height: approx. 0.250"/0.187"/0.062"
- Primary Backing: Woven Polypropylene
- Secondary Backing: Unitary w/Actionbac®
- Total Weight: approx. 78 oz./sq. yd.
- Yarn Size: 1360/2 ply
- Guage: 1/10
- Width: 15 ft.
- Radiant Panel: Class 1
- Smoke Density: Less than 450
- Warranty: 10 Year Wear
- Traffic Class: Heavy (Corridor/Public Areas)

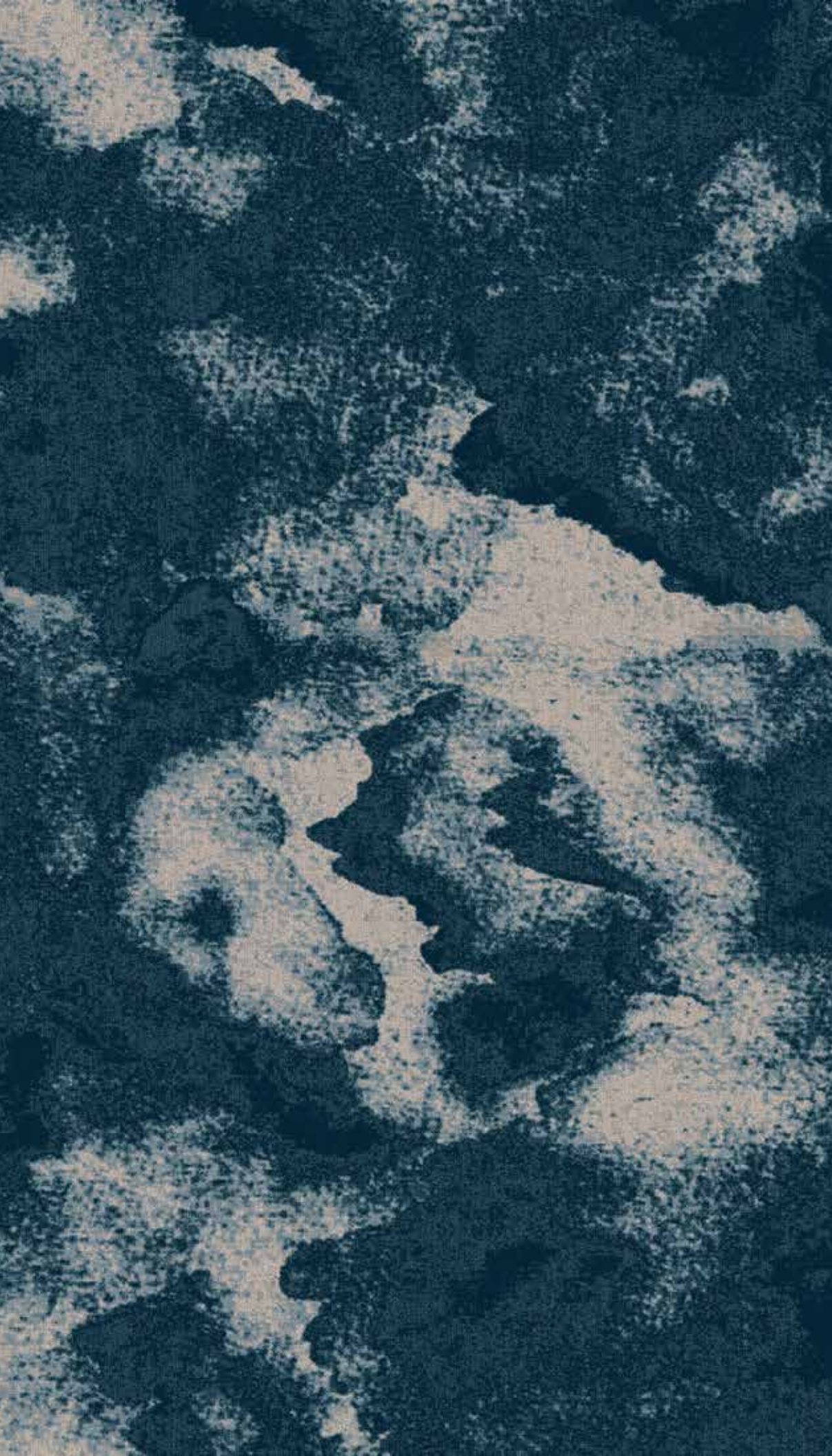


COLOR 297

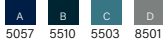


COLOR 246

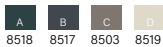






***PUBLIC SPACE***

COLOR 268



COLOR 297

**PRODUCT SPECIFICATIONS**

Product ID: FL004

Name: Flux IV

Construction: Intrepid – Multi-Level Loop Tip Shear

Fiber Content: 100% C.F. Lextron Enviro-Green®  
Solution Dyed Nylon

Pattern Repeat: 45" x 53"

Tufted Pile Weight: 42 oz./sq. yd.

Finished Pile Height: approx. 0.250"/0.187"/0.062"

Primary Backing: Woven Polypropylene

Secondary Backing: Unitary w/Actionbac®

Total Weight: approx. 78 oz./sq. yd.

Yarn Size: 1360/2 ply

Gauge: 1/10

Width: 15 ft.

Radiant Panel: Class 1

Smoke Density: Less than 450

Warranty: 10 Year Wear

Traffic Class: Heavy (Corridor/Public Areas)



COLOR 246







***PUBLIC SPACE***

COLOR 268

**PRODUCT SPECIFICATIONS**

Product ID: FL005

Name: Flux V

Construction: Intrepid – Multi-Level Loop Tip Shear

Fiber Content: 100% C.F. Lextron Enviro-Green®  
Solution Dyed Nylon

Pattern Repeat: 45" x 45"

Tufted Pile Weight: 42 oz./sq. yd.

Finished Pile Height: approx. 0.250"/0.187"/0.062"

Primary Backing: Woven Polypropylene

Secondary Backing: Unitary w/Actionbac®

Total Weight: approx. 78 oz./sq. yd.

Yarn Size: 1360/2 ply

Gauge: 1/10

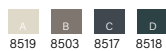
Width: 15 ft.

Radiant Panel: Class 1

Smoke Density: Less than 450

Warranty: 10 Year Wear

Traffic Class: Heavy (Corridor/Public Areas)



COLOR 297



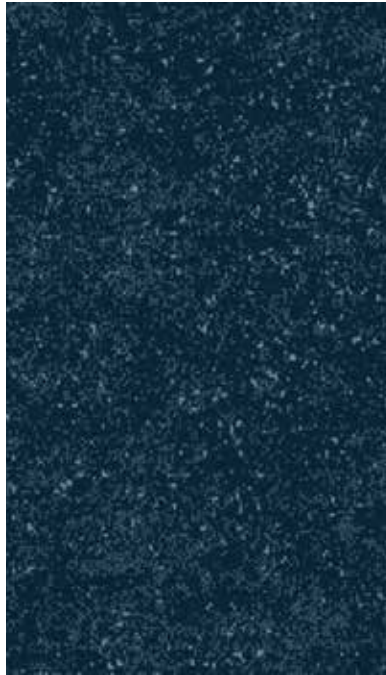
COLOR 246







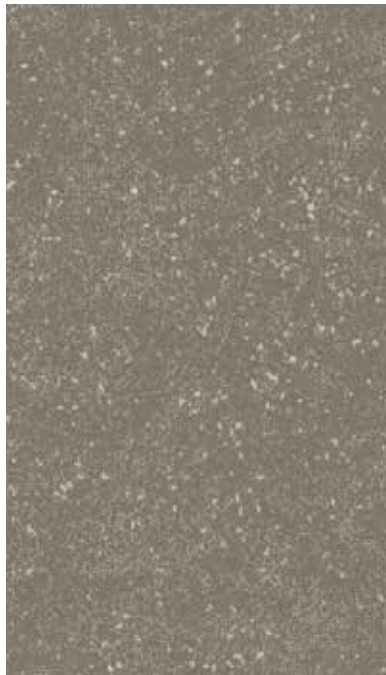
# TRANSITION



COLOR 368

## PRODUCT SPECIFICATIONS

- Product ID: FL006
- Name: Flux VI
- Construction: Intrepid – Multi-Level Loop Tip Shear
- Fiber Content: 100% C.F. Lextron Enviro-Green® Solution Dyed Nylon
- Pattern Repeat: 22.5" x 22.5"
- Tufted Pile Weight: 42 oz./sq. yd.
- Finished Pile Height: approx. 0.250"/0.187"/0.062"
- Primary Backing: Woven Polypropylene
- Secondary Backing: Unitary w/Actionbac®
- Total Weight: approx. 78 oz./sq. yd.
- Yarn Size: 1360/2 ply
- Guage: 1/10
- Width: 15 ft.
- Radiant Panel: Class 1
- Smoke Density: Less than 450
- Warranty: 10 Year Wear
- Traffic Class: Heavy (Corridor/Public Areas)

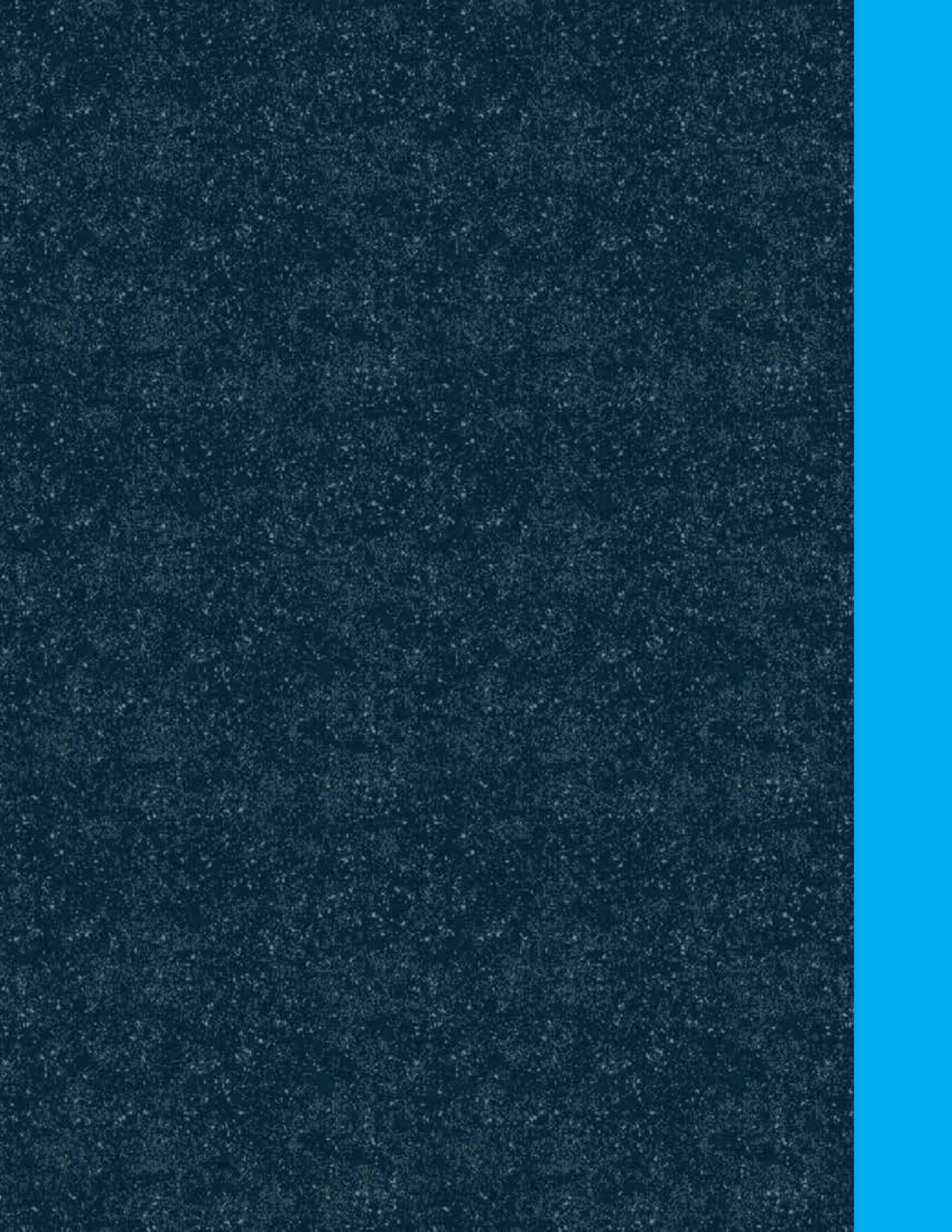


COLOR 397



COLOR 346







# GUESTROOM



A 8501 B 5510

COLOR 468

## PRODUCT SPECIFICATIONS

- Product ID: FL007
- Name: Pitch
- Construction: Dynamics – Servo-Loop Scroll Tip Shear
- Fiber Content: 100% C.F. Lextron Enviro-Green® Solution Dyed Nylon
- Pattern Repeat: 48" x 47"
- Tufted Pile Weight: 32 oz./sq. yd.
- Finished Pile Height: approx. 0.250"/0.187"/0.062"
- Primary Backing: Woven Polypropylene
- Secondary Backing: Actionbac®
- Total Weight: approx. 68 oz./sq. yd.
- Yarn Size: 1360/2 ply
- Guage: 1/10
- Width: 12 ft.
- Radiant Panel: Class 1
- Smoke Density: Less than 450
- Warranty: 10 Year Wear
- Traffic Class: Moderate (Guestrooms)



A 8518 B 8503

COLOR 497



A 3510 B 3504

COLOR 446







# GUESTROOM



A 8501 B 5503

COLOR 468

## PRODUCT SPECIFICATIONS

- Product ID: FL008
- Name: Tracery
- Construction: Dynamics – Servo-Loop Scroll Tip Shear
- Fiber Content: 100% C.F. Lextron Enviro-Green® Solution Dyed Nylon
- Pattern Repeat: 12" x 12"
- Tufted Pile Weight: 32 oz./sq. yd.
- Finished Pile Height: approx. 0.250"/0.187"/0.062"
- Primary Backing: Woven Polypropylene
- Secondary Backing: Actionbac®
- Total Weight: approx. 68 oz./sq. yd.
- Yarn Size: 1360/2 ply
- Guage: 1/10
- Width: 12 ft.
- Radiant Panel: Class 1
- Smoke Density: Less than 450
- Warranty: 10 Year Wear
- Traffic Class: Moderate (Guestrooms)



A 8518 B 8519

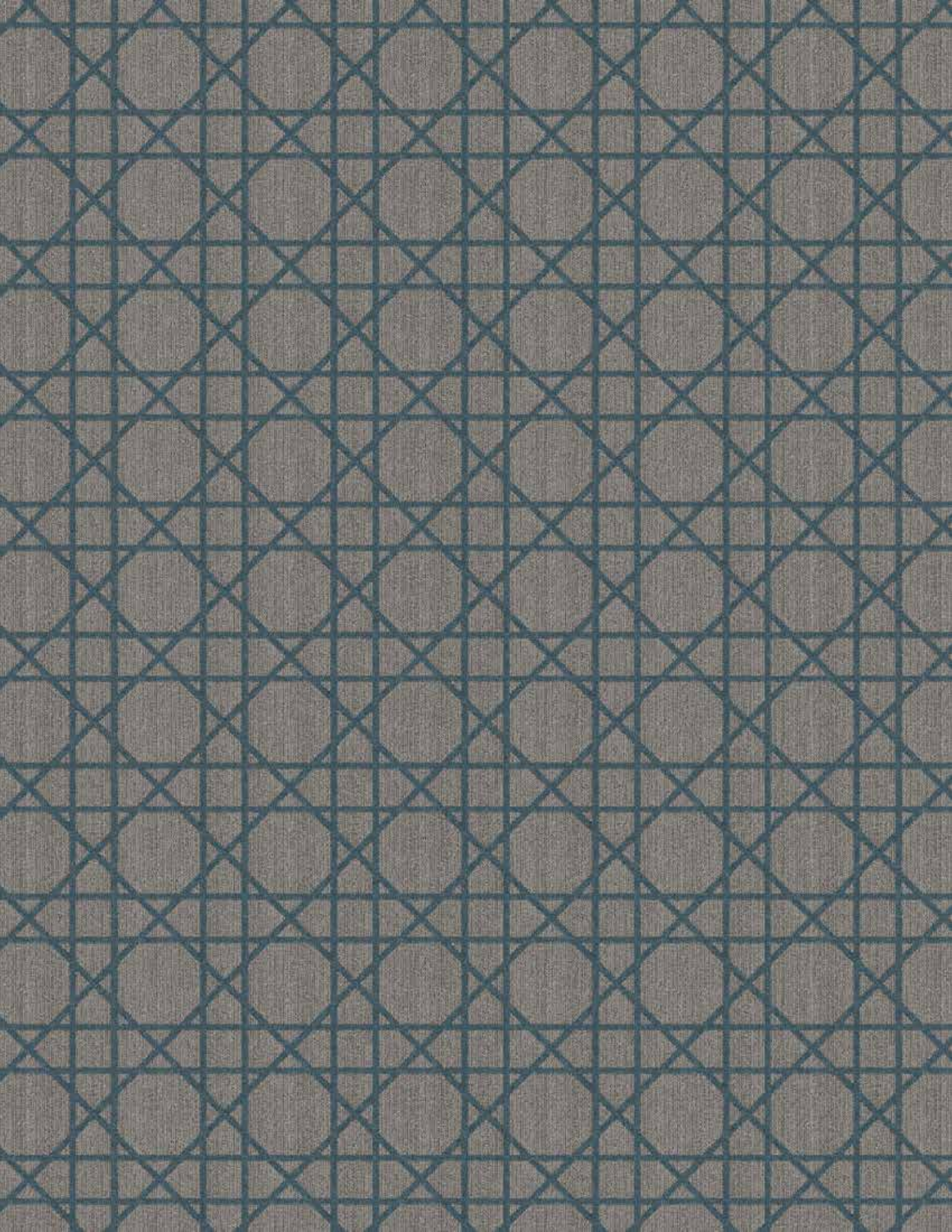
COLOR 497



A 3510 B 7511

COLOR 446









Lextron Enviro Green® contains 10% pre consumer waste. CRI Green Label Plus indoor air quality testing program certification # GLP2380.

Carpet should be installed in accordance with the Carpet and Rug Institute's Standard CRI-104. Carpet must be installed over manufacturer's recommended pad.

Pattern streaks and banding are visually apparent streaking in patterned carpet resulting from linear juxtaposition of pattern elements visible in both length and width directions. It is not a carpet defect, but is inherent in solution dyed graphic and cut and loop patterns.

All specifications are subject to normal manufacturing tolerances.

Due to the manufacturing process of a tip sheared product, the finished yarn weight will vary more than normal manufacturing tolerances and side match cannot be guaranteed.

# Lexmark + Hospitality

285 Kraft Dr. | Dalton, GA 30721 | 800-871-3211 | [www.lexmarkhospitality.com](http://www.lexmarkhospitality.com) | [edgebylexmark.com](http://edgebylexmark.com)