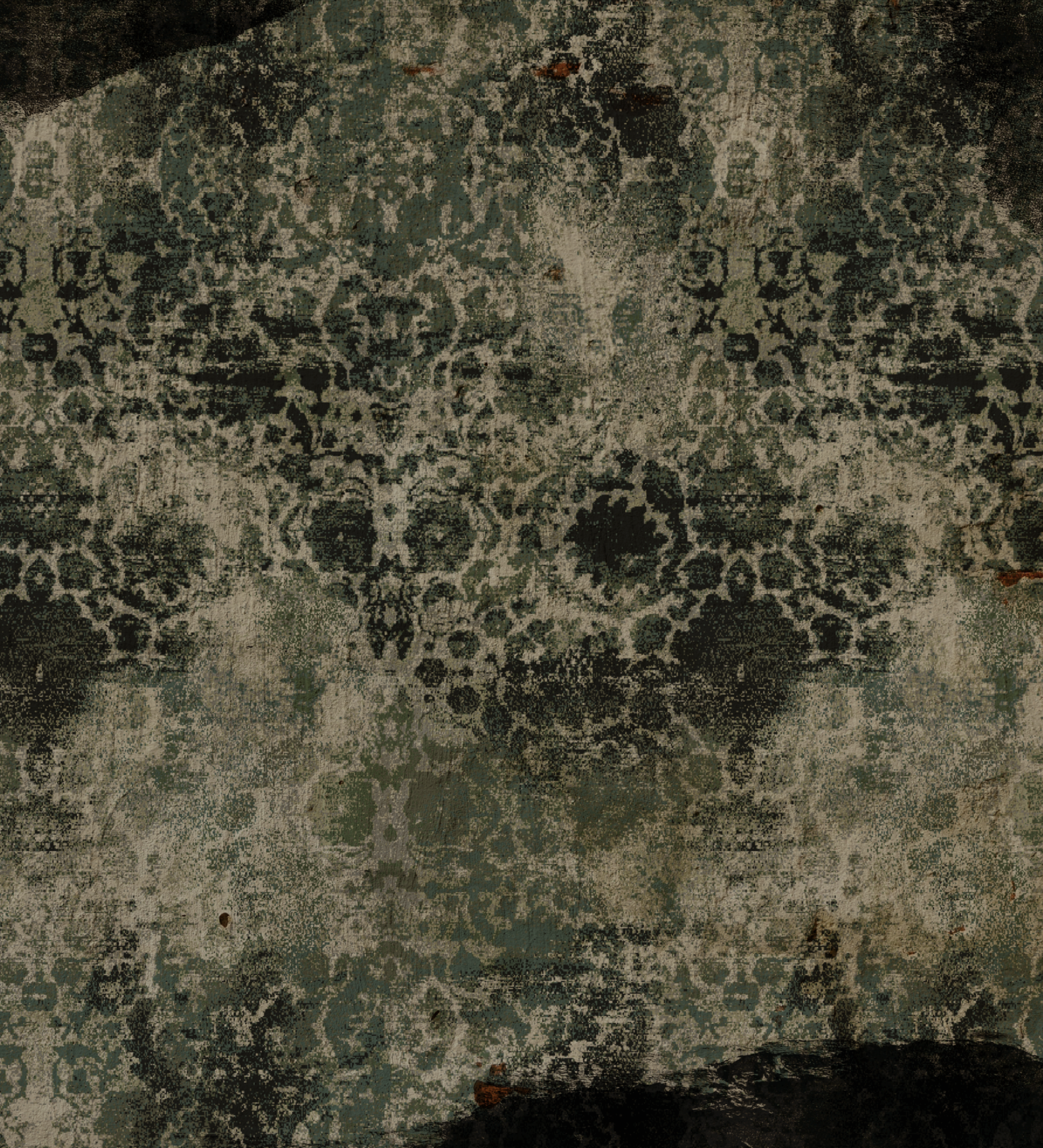




Lexmark + Hospitality


285 KRAFT DR. • DALTON, GA 30721 • 800-871-3211 • LEXMARKHOSPITALITY.COM



 **Relic** 

Lexmark + Hospitality

TEMPT CONCEPT COLLECTION

A close-up photograph of the spines of several antique books. The spines are bound in dark, heavily worn leather, showing significant signs of age and use. The leather is cracked, scuffed, and peeling in places, revealing a lighter, fibrous material underneath. The books are arranged in a row, with their spines facing the viewer. The lighting is dramatic, highlighting the textures and imperfections of the old leather.

Dive into antiquity..

The wisdom and ingenuity of ancient architecture...
the subtle intricacies that exist
in what one might otherwise mistake in a simple design...

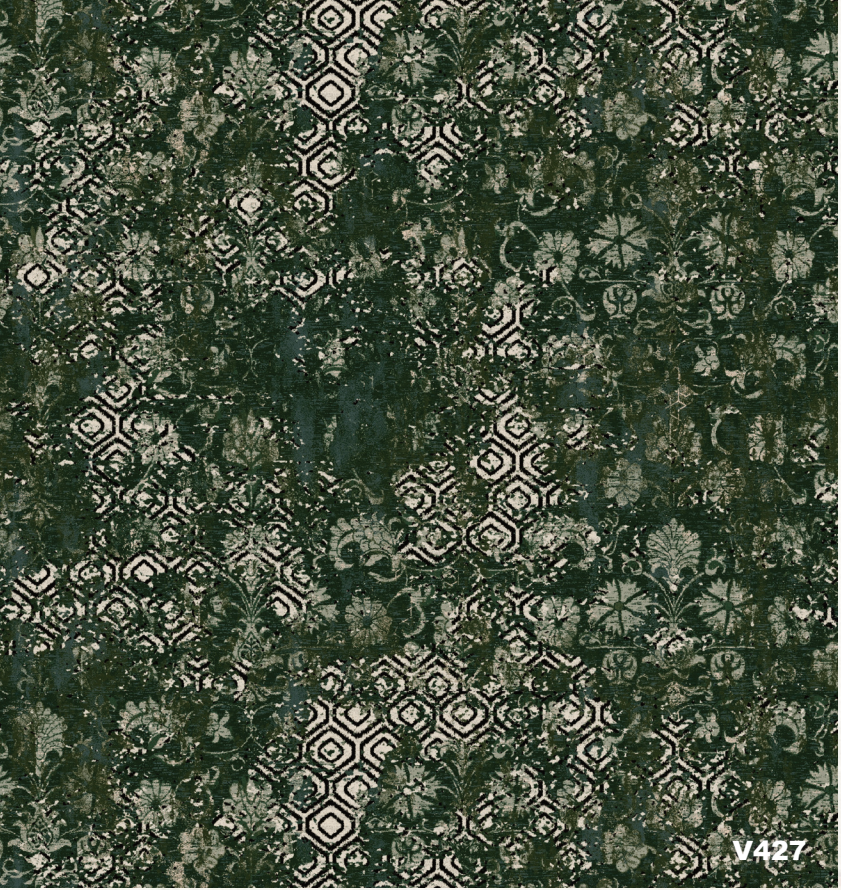
The secrets that lay within the confines of old books,
whose titles and embellishments have long since faded from their bindings,
beseeching us to delicately comb through their pages...



Opulent, yet unpolished.
Elegant, yet raw.
Timeless, yet temporal.

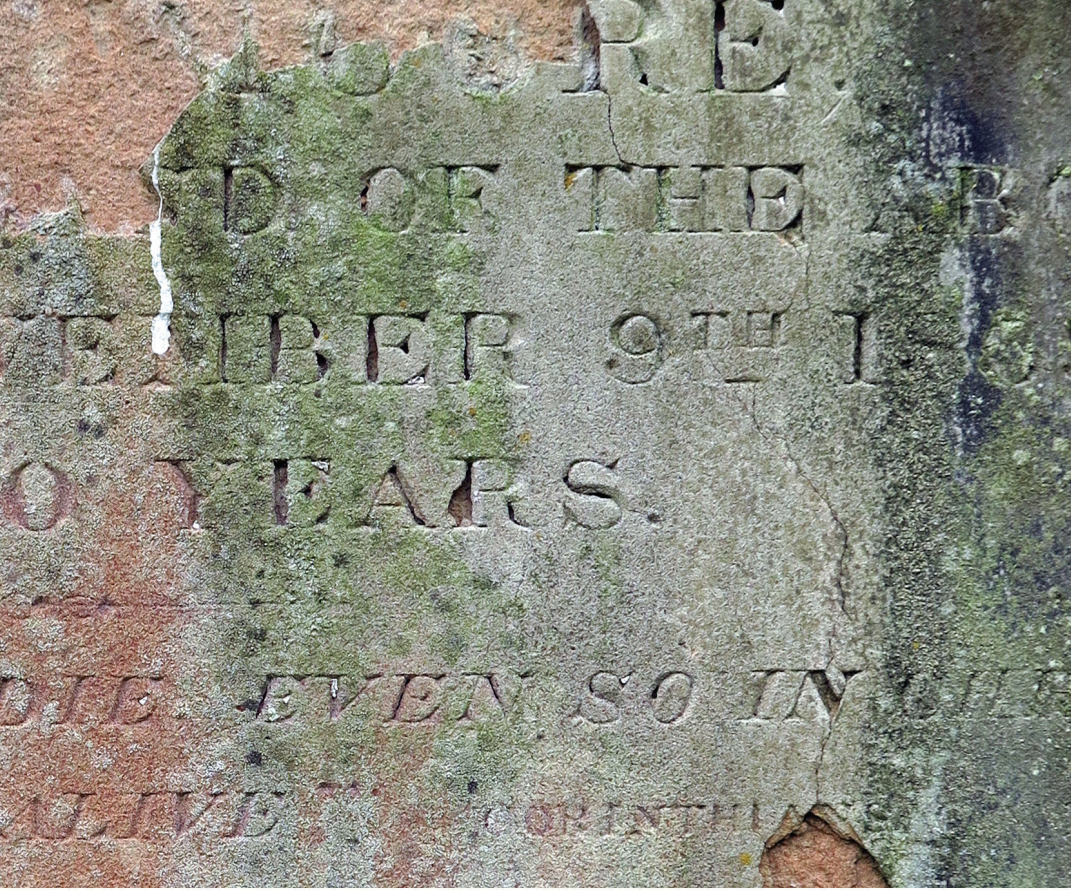
Magnetized by artifacts lovingly sculpted by those long since past,
we give you our latest collection:

Relic.

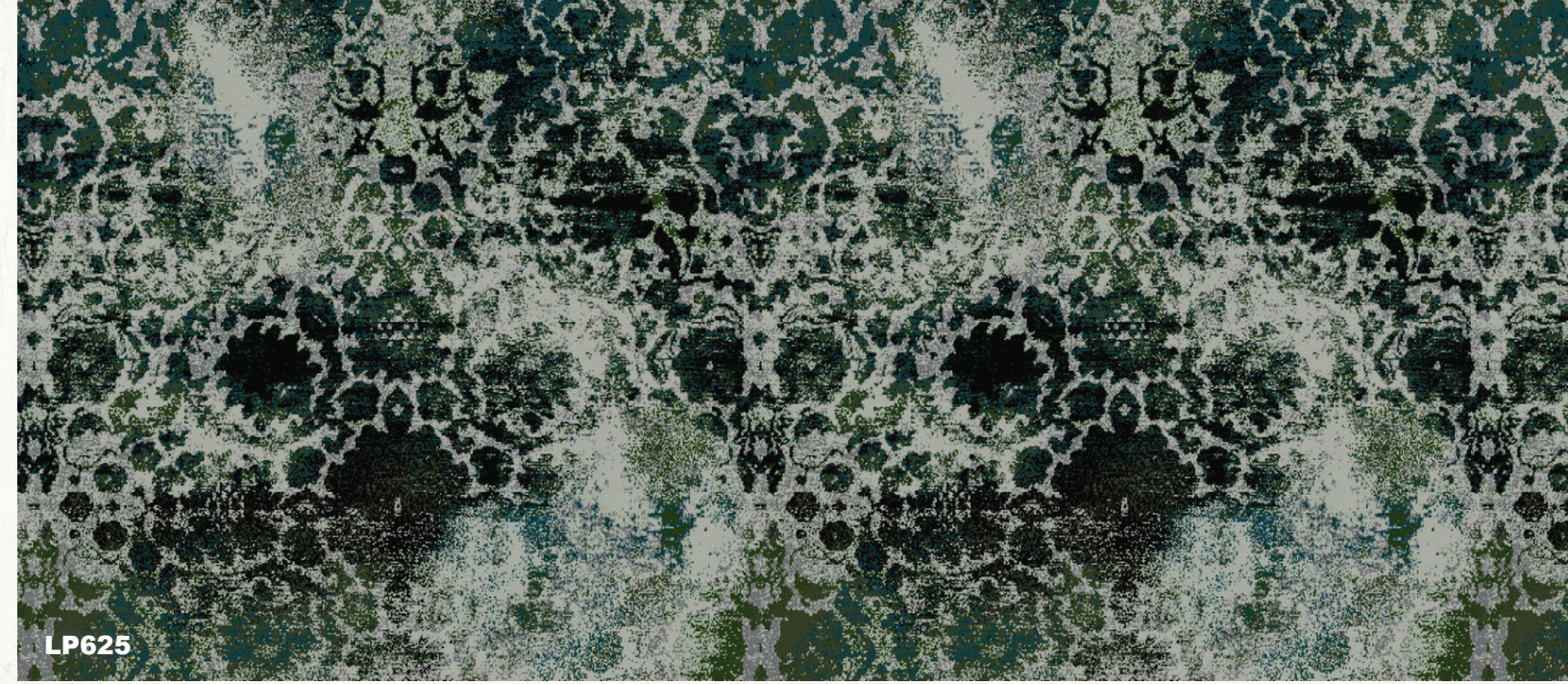


V427

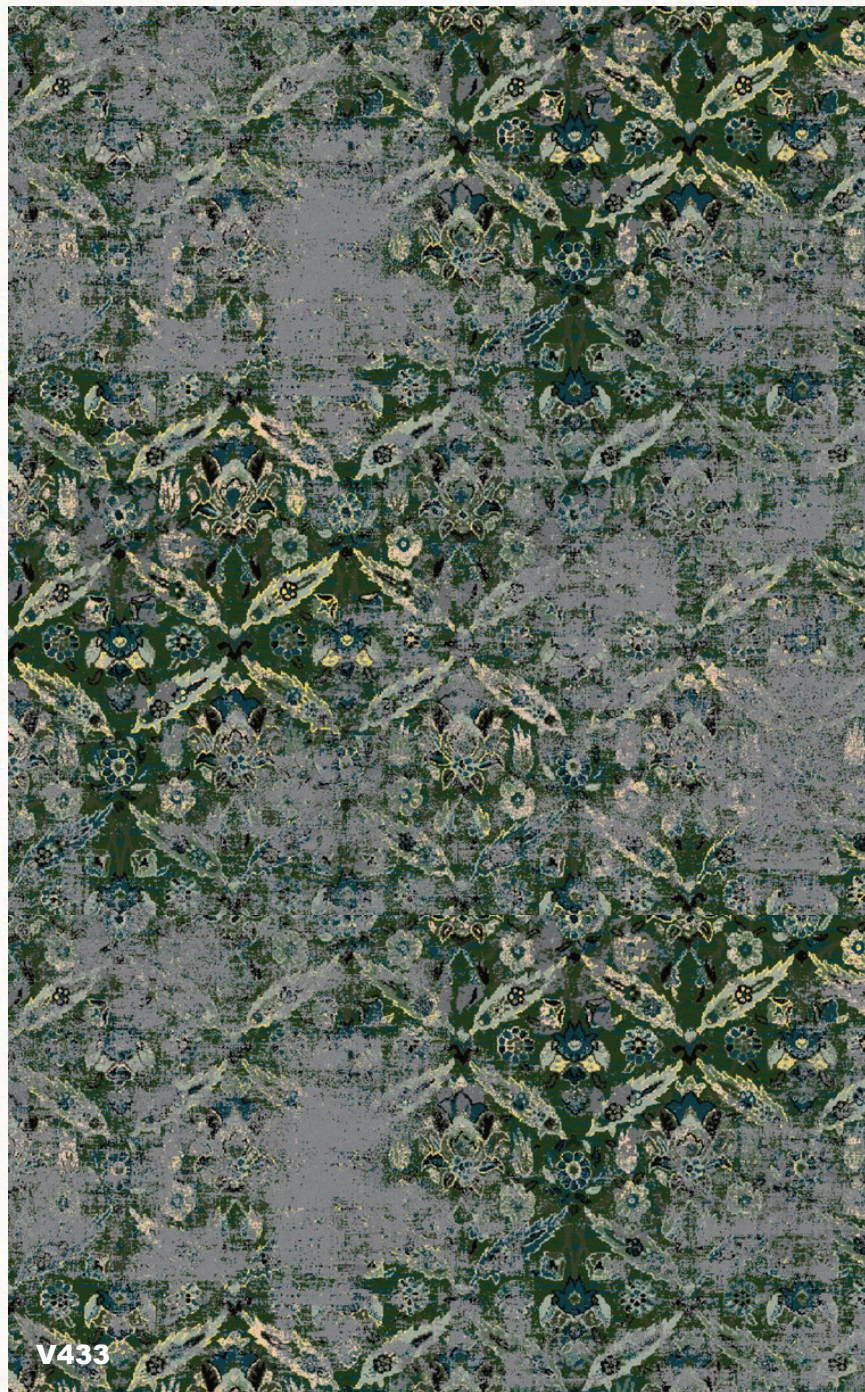




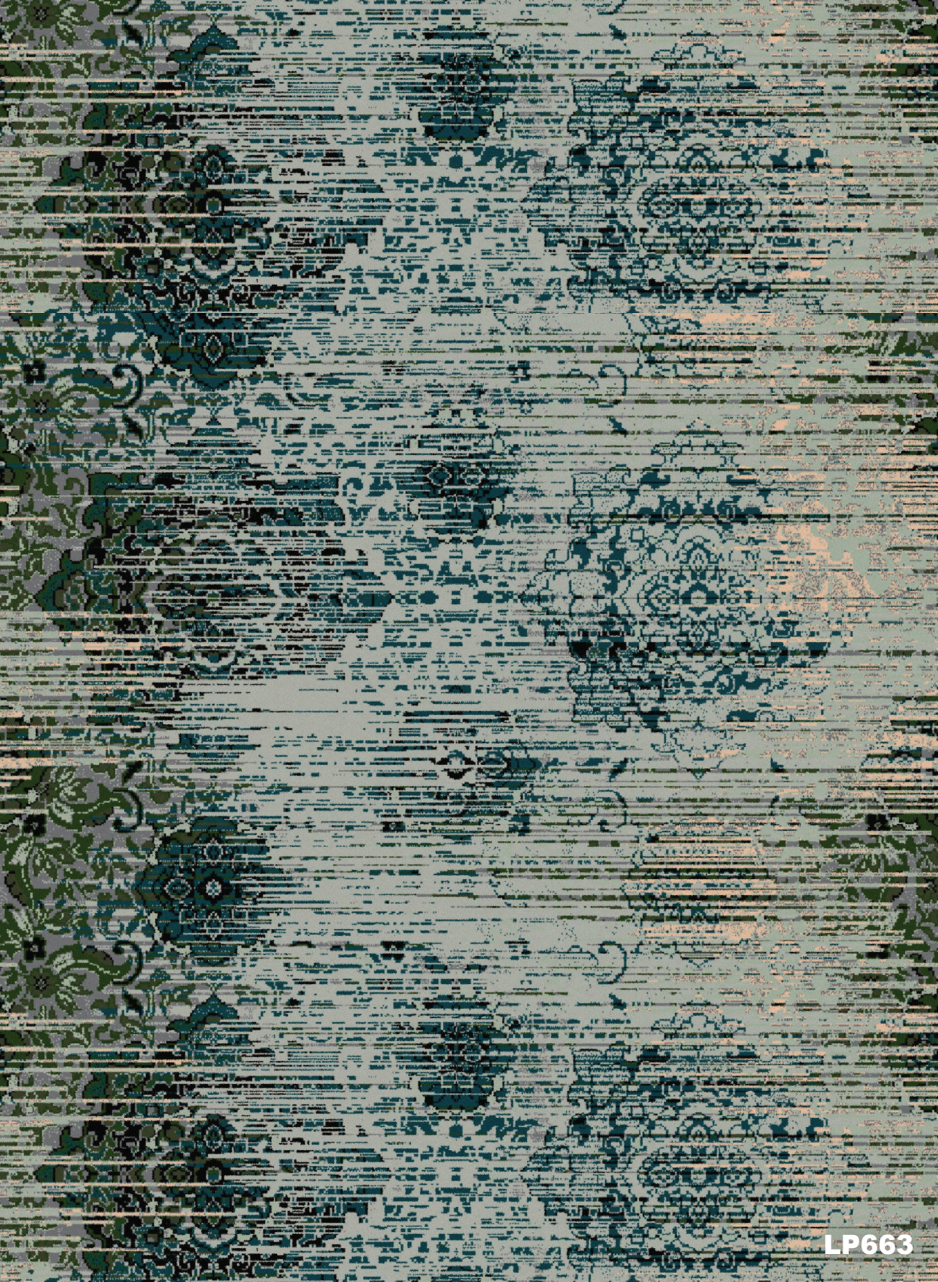




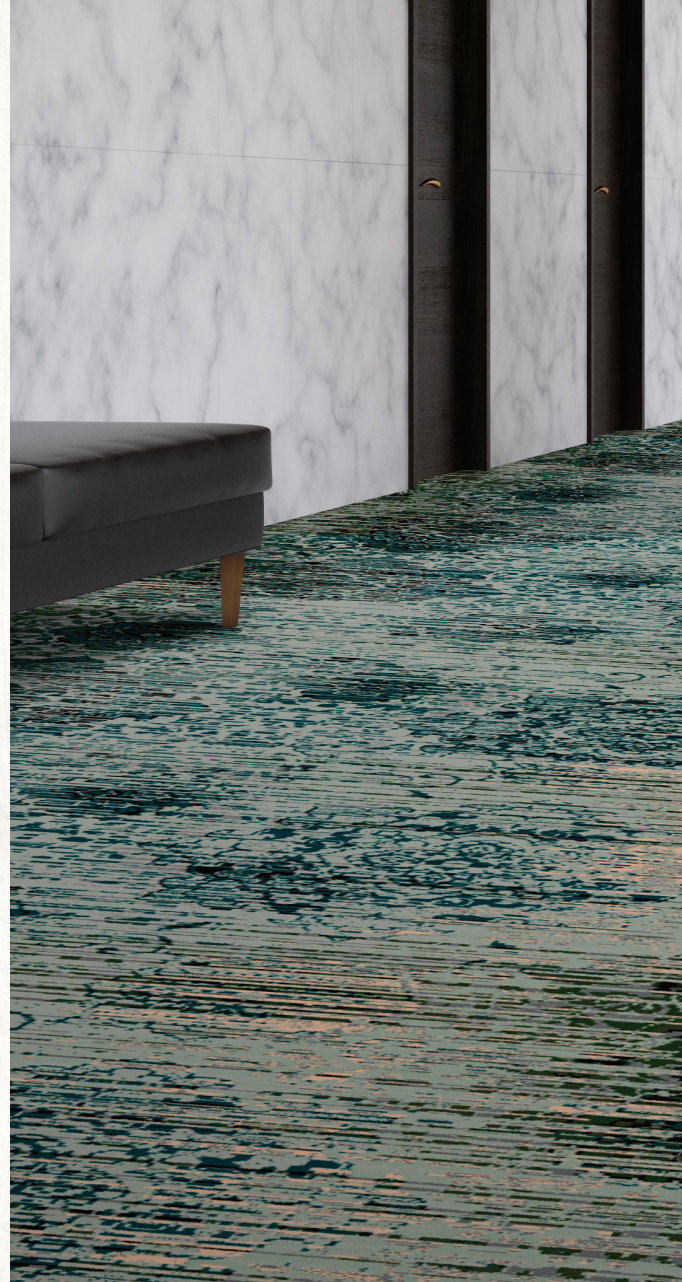
LP625

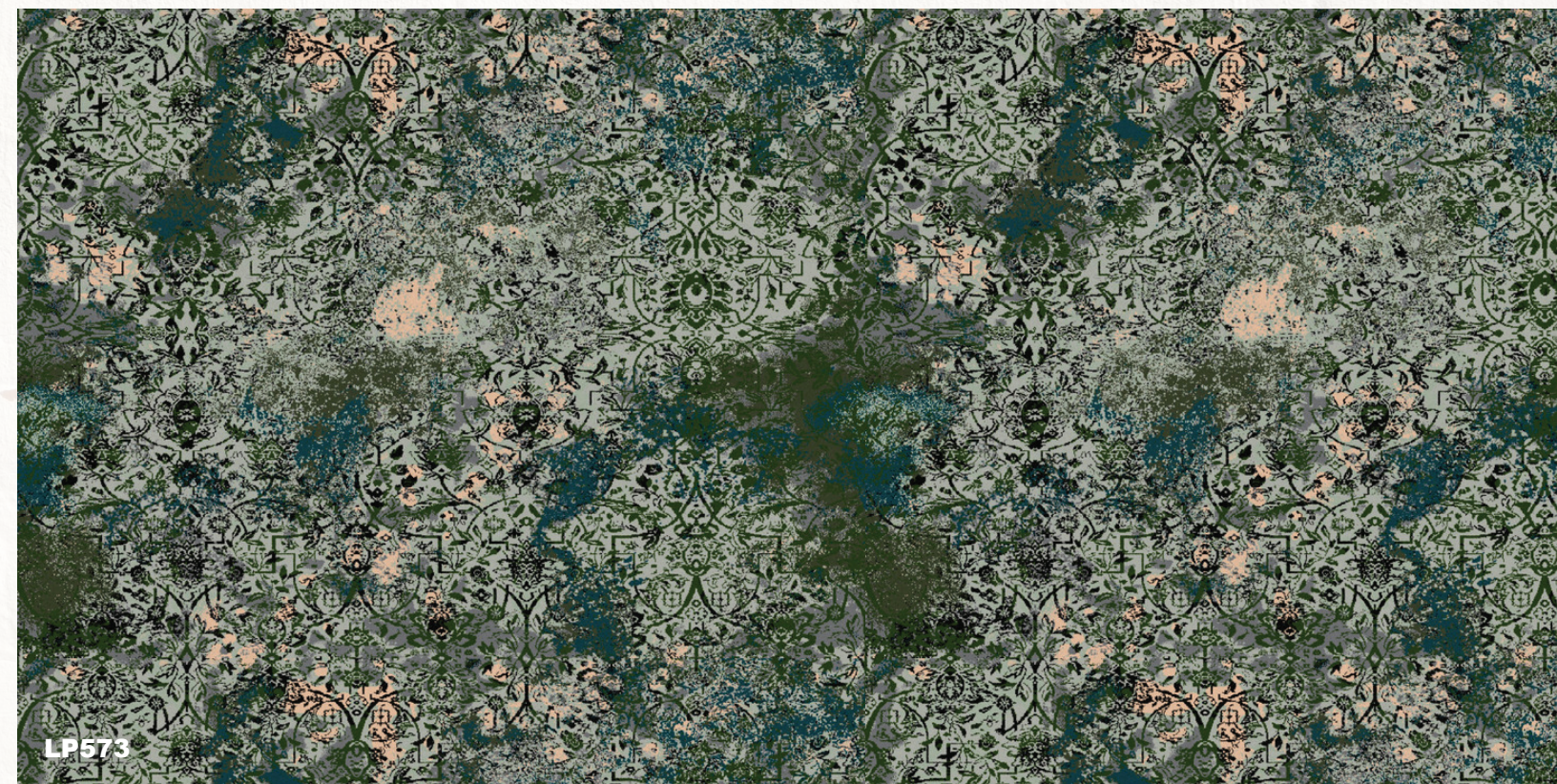


V433



LP663

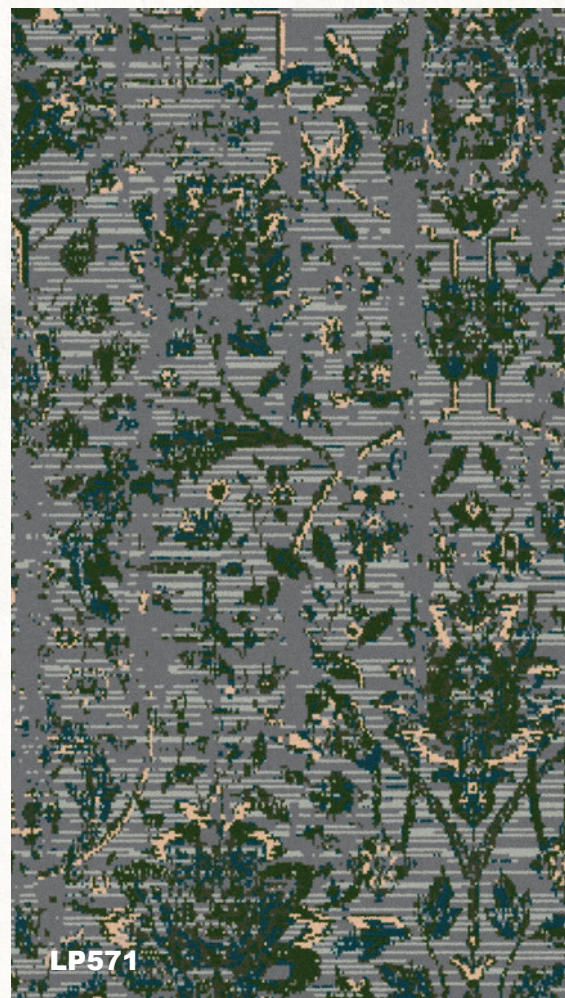




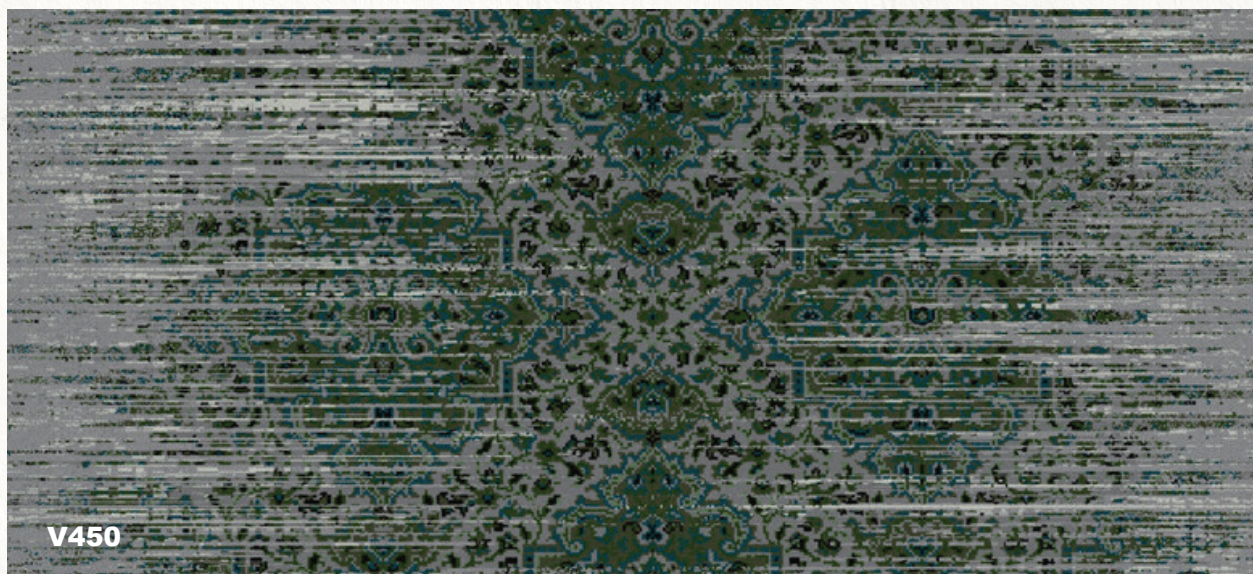
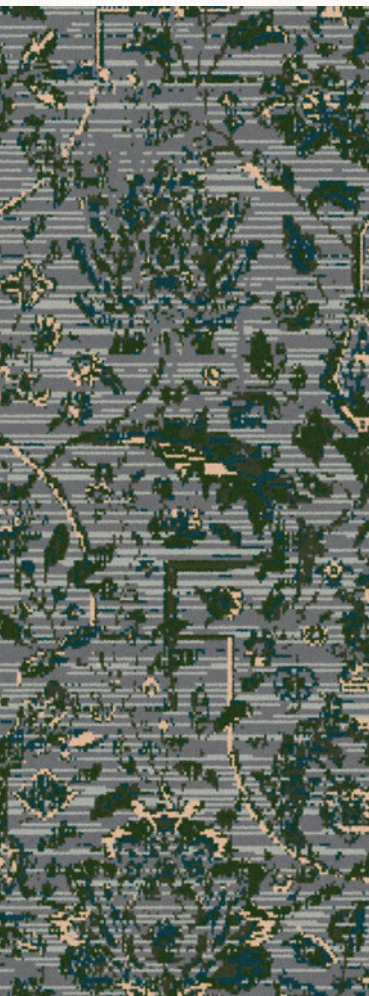
LP573



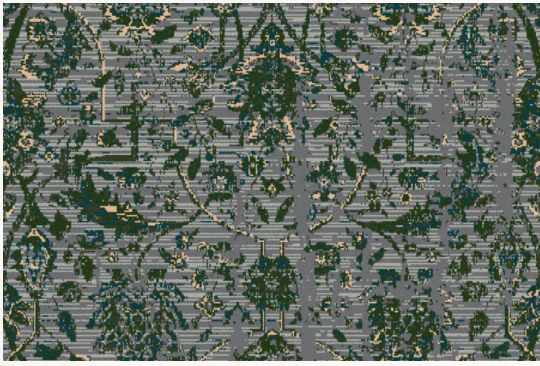
DY700



LP571



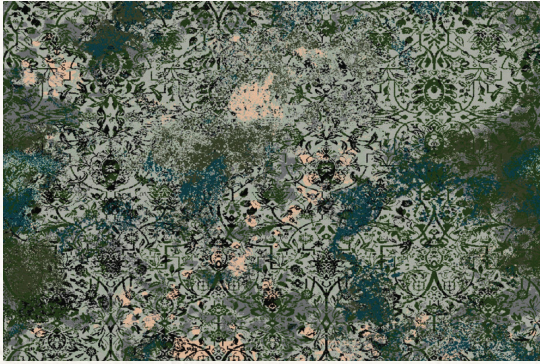
V450



- A 8533
- B 8531
- C 4012
- D 4511
- E 4089
- F 3537

LP571 RELIC I **COLOR 140**

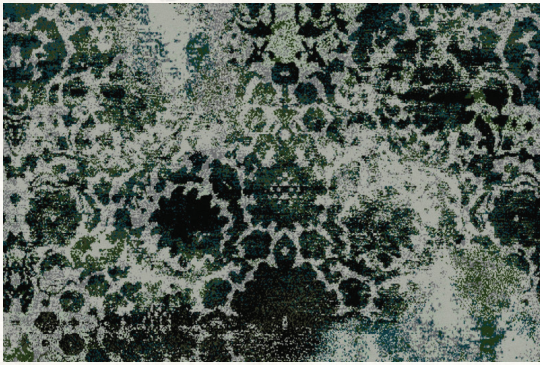
| | |
|---|--|
| Construction: Legacy Plus | Primary Backing: Woven Polypropylene |
| Fiber Content: 100% Solution Dyed Nylon | Secondary Backing: Unitary with Actionbac® |
| Pattern Repeat: 45" x 109" | Total Weight: 72 oz. sq. yd. |
| Tufted Pile Weight: 36 oz. sq. yd. | Yarn Size: 1360 2 ply |
| Finished Pile Height: 0.25" | Standard Width: 15' |



- A 8533
- B 8527
- C 8531
- D 4012
- E 4511
- F 4089
- G 8002
- H 3537

LP573 RELIC II **COLOR 240**

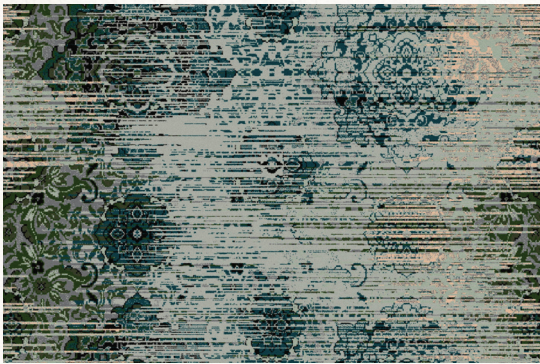
| | |
|---|--|
| Construction: Legacy Plus | Primary Backing: Woven Polypropylene |
| Fiber Content: 100% Solution Dyed Nylon | Secondary Backing: Unitary with Actionbac® |
| Pattern Repeat: 90" x 86" | Total Weight: 72 oz. sq. yd. |
| Tufted Pile Weight: 36 oz. sq. yd. | Yarn Size: 1360 2 ply |
| Finished Pile Height: 0.25" | Standard Width: 15' |



- A 8533
- B 8527
- C 8531
- D 4012
- E 4511
- F 4089
- G 8002

LP625 RELIC III **COLOR 340**

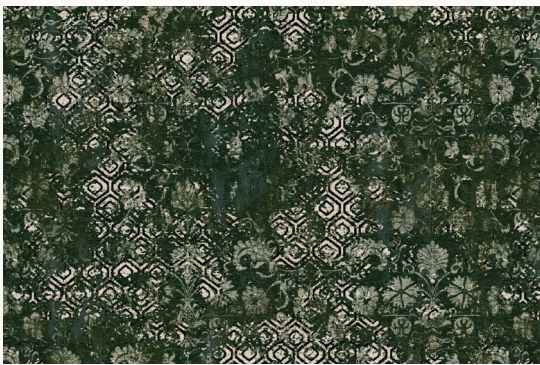
| | |
|---|--|
| Construction: Legacy Plus | Primary Backing: Woven Polypropylene |
| Fiber Content: 100% Solution Dyed Nylon | Secondary Backing: Unitary with Actionbac® |
| Pattern Repeat: 60" x 86" | Total Weight: 72 oz. sq. yd. |
| Tufted Pile Weight: 36 oz. sq. yd. | Yarn Size: 1360 2 ply |
| Finished Pile Height: 0.25" | Standard Width: 15' |



- A 8533
- B 8527
- C 8531
- D 4012
- E 4511
- F 4089
- G 8002
- H 3537

LP663 RELIC IV **COLOR 440**

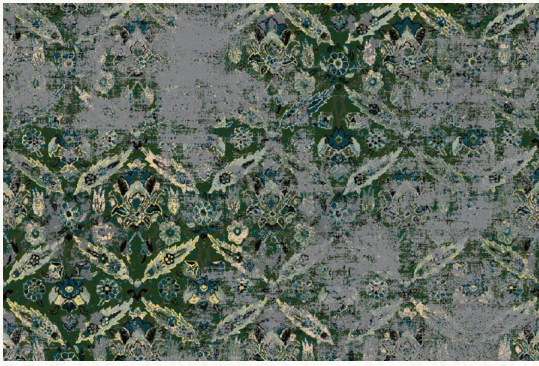
| | |
|---|--|
| Construction: Legacy Plus | Primary Backing: Woven Polypropylene |
| Fiber Content: 100% Solution Dyed Nylon | Secondary Backing: Unitary with Actionbac® |
| Pattern Repeat: 90" x 107" | Total Weight: 72 oz. sq. yd. |
| Tufted Pile Weight: 36 oz. sq. yd. | Yarn Size: 1360 2 ply |
| Finished Pile Height: 0.25" | Standard Width: 15' |



- A 1504
- B 8527
- C 4012
- D 4511
- E 4089
- F 8002
- G 8533
- H 3537

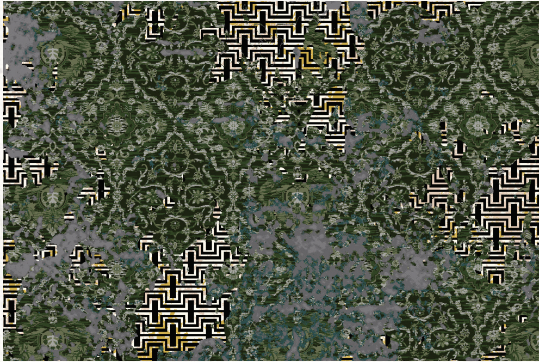
V427 RELIC V **COLOR 540**

| | |
|---|--|
| Construction: Vivid | Primary Backing: Woven Polypropylene |
| Fiber Content: 100% Solution Dyed Nylon | Secondary Backing: Unitary with Actionbac® |
| Pattern Repeat: 180" x 156" | Total Weight: 78 oz. sq. yd. |
| Tufted Pile Weight: 42 oz. sq. yd. | Yarn Size: 1360 2 ply |
| Finished Pile Height: 0.2813" 0.25" 0.0625" | Standard Width: 15' |



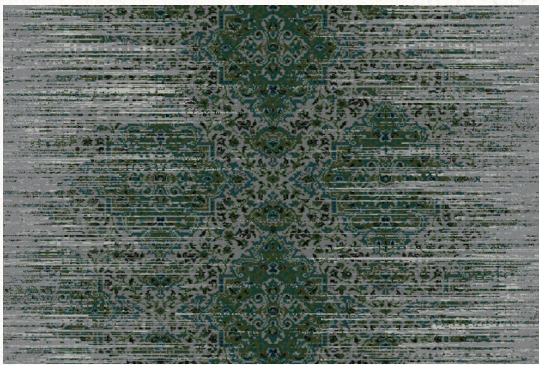
- A 8533
- B 8531
- C 8527
- D 4007
- E 4012
- F 4511
- G 4089
- H 8002

| V433 RELIC VI | COLOR 640 |
|---|--|
| Construction: Vivid | Primary Backing: Woven Polypropylene |
| Fiber Content: 100% Solution Dyed Nylon | Secondary Backing: Unitary with Actionbac® |
| Pattern Repeat: 90" x 100" | Total Weight: 78 oz. sq. yd. |
| Tufted Pile Weight: 42 oz. sq. yd. | Yarn Size: 1360 2 ply |
| Finished Pile Height: 0.2813" 0.25" 0.0625" | Standard Width: 15' |



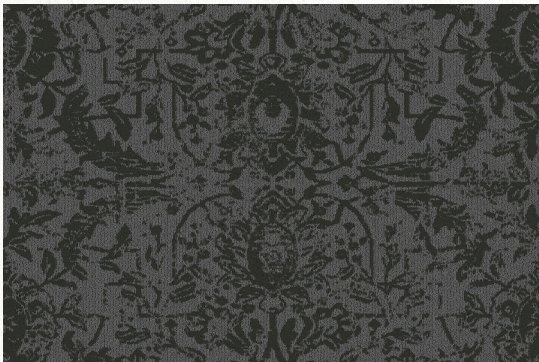
- A 1504
- B 8533
- C 8531
- D 4007
- E 4012
- F 4511
- G 8002
- H 4089

| V436 RELIC VII | COLOR 740 |
|---|--|
| Construction: Vivid | Primary Backing: Woven Polypropylene |
| Fiber Content: 100% Solution Dyed Nylon | Secondary Backing: Unitary with Actionbac® |
| Pattern Repeat: 180" x 216" | Total Weight: 78 oz. sq. yd. |
| Tufted Pile Weight: 42 oz. sq. yd. | Yarn Size: 1360 2 ply |
| Finished Pile Height: 0.2813" 0.25" 0.0625" | Standard Width: 15' |



- A 8531
- B 4007
- C 4012
- D 4511
- E 4089
- F 8002
- G 8533

| V450 RELIC VIII | COLOR 840 |
|---|--|
| Construction: Vivid | Primary Backing: Woven Polypropylene |
| Fiber Content: 100% Solution Dyed Nylon | Secondary Backing: Unitary with Actionbac® |
| Pattern Repeat: 90" x 88" | Total Weight: 78 oz. sq. yd. |
| Tufted Pile Weight: 42 oz. sq. yd. | Yarn Size: 1360 2 ply |
| Finished Pile Height: 0.2813" 0.25" 0.0625" | Standard Width: 15' |



- A 8531
- B 4511

| DY700 RELIC IX | COLOR 940 |
|---|--|
| Construction: Dynamics | Primary Backing: Woven Polypropylene |
| Fiber Content: 100% Solution Dyed Nylon | Secondary Backing: Unitary with Actionbac® |
| Pattern Repeat: 72" x 150" | Total Weight: 72 oz. sq. yd. |
| Tufted Pile Weight: 32 oz. sq. yd. | Yarn Size: 1360 2 ply |
| Finished Pile Height: 0.25" 0.1875" 0.0625" | Standard Width: 15' |



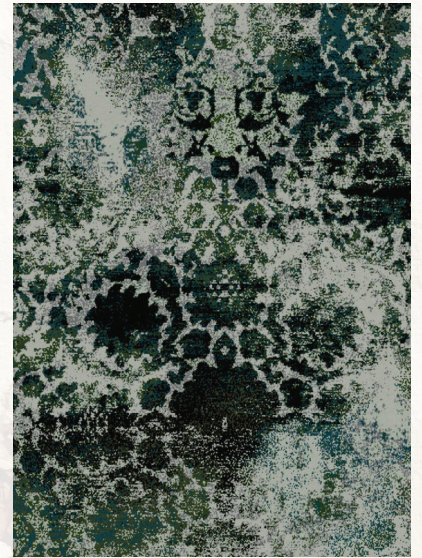


Dive into the antiquity of Relic.

Opulent, yet unpolished. Elegant, yet raw.
Timeless, yet temporal.



V427 - 540



LP625 - 340



V450 - 840



DY700 - 940



LP663 - 440