

 Tarkett Hospitality

2020 INTRODUCTIONS  
RUNNING LINE



**2020**  
**Introductions**  
Running Line

Tarkett Human-Conscious Design™ creates unique guest experiences by providing stylish solutions that contribute to a clean and healthy space. With more than a century-long heritage of leading innovation, best-in-class running line products and cutting edge custom design, Tarkett Hospitality helps you create beautiful spaces that positively impact people's daily lives.

Tarkett Hospitality flooring solutions help Hospitality environments focus on delivering the right product to support the specific need of the space. We are excited to introduce several new public space and guest room products to our Soft Surface running line offering.





**Public Space**  
Broadloom  
Introductions

Allow us to transform your inspiration into a reality with our new running line Public Space introductions for 2020. Just as a book's cover exists to be judged, public spaces exist to represent what you stand for. We know the importance design plays in that perception and your success.

- Intertwined I
- Intertwined II
- Saltmarsh I
- Saltmarsh II
- Saltmarsh III
- Saltmarsh IV



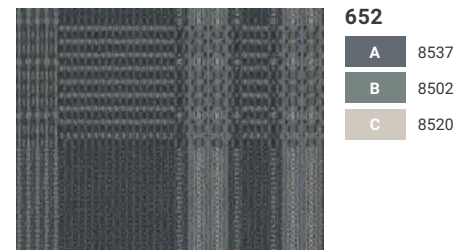


# Intertwined I E215

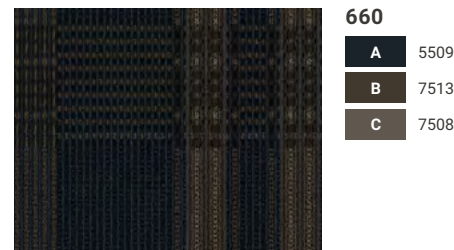
Intertwined Collection



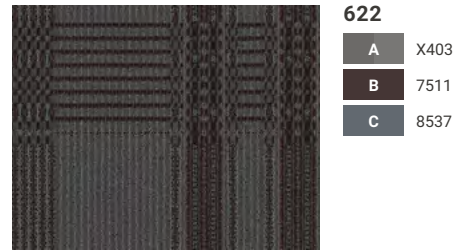
COLOR SHOWN: 624



- 652**
- A 8537
  - B 8502
  - C 8520



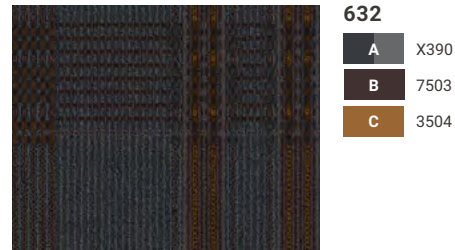
- 660**
- A 5509
  - B 7513
  - C 7508



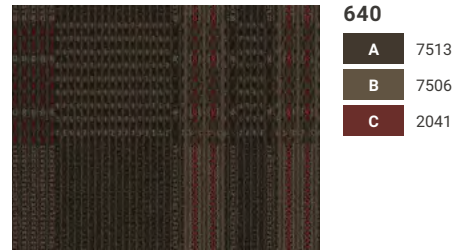
- 622**
- A X403
  - B 7511
  - C 8537



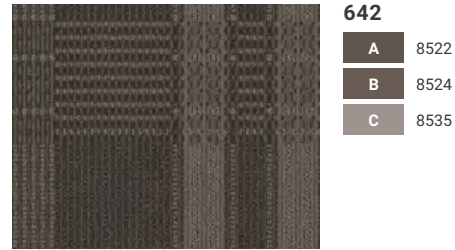
- 624**
- A 7506
  - B 8524
  - C 8004



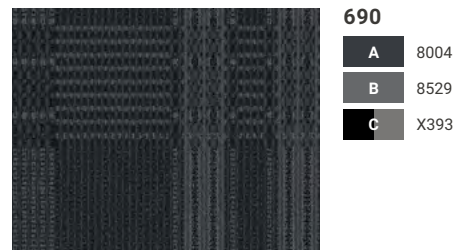
- 632**
- A X390
  - B 7503
  - C 3504



- 640**
- A 7513
  - B 7506
  - C 2041



- 642**
- A 8522
  - B 8524
  - C 8535

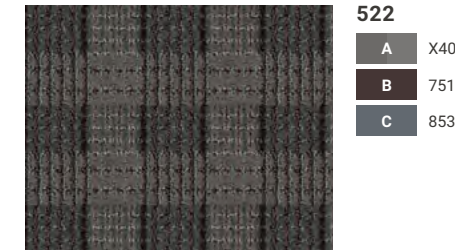


- 690**
- A 8004
  - B 8529
  - C X393

Broadloom | Public Space

# Intertwined II E201

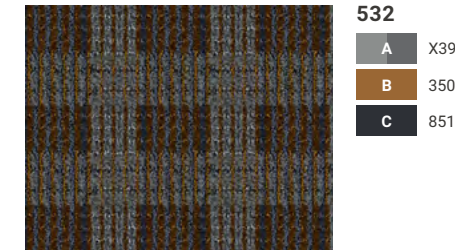
Intertwined Collection



- 522**
- A X403
  - B 7511
  - C 8537



- 524**
- A 8524
  - B 7506
  - C 8004



- 532**
- A X391
  - B 3504
  - C 8518



- 540**
- A 7513
  - B 7506
  - C 2041



- 542**
- A 8522
  - B 8524
  - C 8535



- 552**
- A 3510
  - B 8510
  - C 7511

Broadloom | Public Space



COLOR SHOWN: 524



- 560**
- A 7508
  - B 7513
  - C 5509



- 590**
- A 8004
  - B 8529
  - C X393

**Construction:** Element - Enhanced Loop-Tip Shear  
**Fiber Content:** 100% Solution Dyed Nylon  
**Pattern Repeat:** 90"x21.3"  
**Tufted Pile Weight:** 36 oz. | sq. yd.  
**Finished Pile Height:** Apx. 0.25" | 0.1875" | 0.0625"

**Primary Backing:** Woven Polypropylene  
**Secondary Backing:** Unitary Actionbac®  
**Total Weight:** Apx. 72 oz. | sq. yd.  
**Standard Width:** 15'

**Construction:** Element - Enhanced Loop-Tip Shear  
**Fiber Content:** 100% Solution Dyed Nylon  
**Pattern Repeat:** 4"x4"  
**Tufted Pile Weight:** 36 oz. | sq. yd.  
**Finished Pile Height:** Apx. 0.25" | 0.1875" | 0.0625"

**Primary Backing:** Woven Polypropylene  
**Secondary Backing:** Unitary Actionbac®  
**Total Weight:** Apx. 72 oz. | sq. yd.  
**Standard Width:** 12' or 15'



# Saltmarsh I 110D

Saltmarsh Collection

Broadloom | Public Space

# Saltmarsh II 111D

Saltmarsh Collection

Broadloom | Public Space



COLOR SHOWN: 620



- 620**
- A 8520
  - B X391
  - C 8517



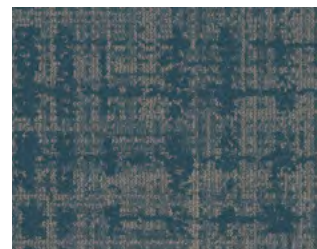
- 622**
- A 8526
  - B 7502
  - C 8510



- 623**
- A 8517
  - B 3510
  - C X432



- 624**
- A X400
  - B X403
  - C 8533



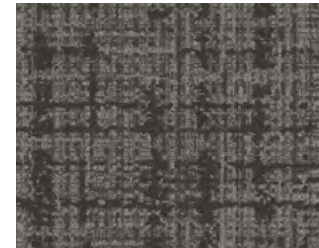
- 660**
- A 5515
  - B 5503
  - C 8526



- 520**
- A 8520
  - B X391
  - C 8517



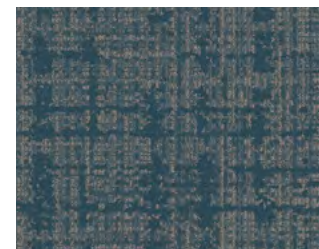
- 522**
- A 8526
  - B 7502
  - C 8510



- 523**
- A 8517
  - B 3510
  - C X432



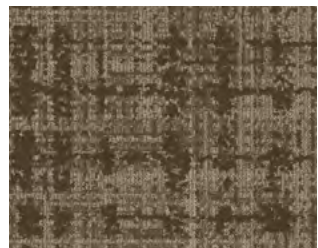
- 524**
- A X400
  - B X403
  - C 8533



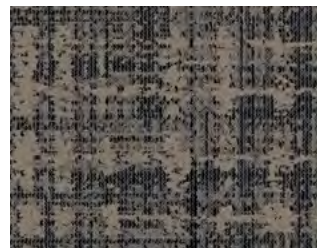
- 560**
- A 5515
  - B 5503
  - C 8526



COLOR SHOWN: 520



- 680**
- A 7509
  - B X333
  - C 3543



- 690**
- A 3510
  - B X427
  - C 8002



- 697**
- A 8518
  - B 8510
  - C 8520



- 580**
- A 7509
  - B X333
  - C 3543



- 590**
- A 3510
  - B X427
  - C 8002



- 597**
- A 8518
  - B 8510
  - C 8520

**Construction:** Dynamics - Servo-Scroll Loop Tip Shear  
**Fiber Content:** 100% Solution Dyed Nylon  
**Pattern Repeat:** 90"x100"  
**Tufted Pile Weight:** 36 oz. | sq. yd.  
**Finished Pile Height:** Apx. 0.25" | 0.1875" | 0.0625"

**Primary Backing:** Woven Polypropylene  
**Secondary Backing:** Actionbac®  
**Total Weight:** Apx. 72 oz. | sq. yd.  
**Standard Width:** 15'

**Construction:** Dynamics - Servo-Scroll Loop Tip Shear  
**Fiber Content:** 100% Solution Dyed Nylon  
**Pattern Repeat:** 48"x60"  
**Tufted Pile Weight:** 36 oz. | sq. yd.  
**Finished Pile Height:** Apx. 0.25" | 0.1875" | 0.0625"

**Primary Backing:** Woven Polypropylene  
**Secondary Backing:** Actionbac®  
**Total Weight:** Apx. 72 oz. | sq. yd.  
**Standard Width:** 12'



# Saltmarsh III 112D

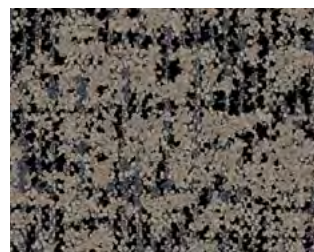
Saltmarsh Collection



COLOR SHOWN: 420



- 480**
- A 7509
  - B X333
  - C 3543



- 490**
- A 3510
  - B X427
  - C 8002



- 420**
- A 8520
  - B X391
  - C 8517



- 422**
- A 8526
  - B 7502
  - C 8510



- 423**
- A 8517
  - B 3510
  - C X432



- 424**
- A X400
  - B X403
  - C 8533



- 460**
- A 5515
  - B 5503
  - C 8526



- 497**
- A 8518
  - B 8510
  - C 8520

Broadloom | Public Space

# Saltmarsh IV 113D

Saltmarsh Collection



- 320**
- A 8520
  - B X391
  - C 8517



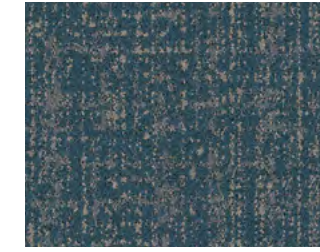
- 322**
- A 8526
  - B 7502
  - C 8510



- 323**
- A 8517
  - B 3510
  - C X432



- 324**
- A X400
  - B X403
  - C 8533



- 360**
- A 5515
  - B 5503
  - C 8526



- 380**
- A 7509
  - B X333
  - C 3543

Broadloom | Public Space



COLOR SHOWN: 420



- 390**
- A 3510
  - B X427
  - C 8002



- 397**
- A 8518
  - B 8510
  - C 8520

**Construction:** Dynamics - Servo-Scroll Loop Tip Shear  
**Fiber Content:** 100% Solution Dyed Nylon  
**Pattern Repeat:** 24"x30"  
**Tufted Pile Weight:** 36 oz. | sq. yd.  
**Finished Pile Height:** Apx. 0.25" | 0.1875" | 0.0625"

**Primary Backing:** Woven Polypropylene  
**Secondary Backing:** Actionbac®  
**Total Weight:** Apx. 72 oz. | sq. yd.  
**Standard Width:** 12'

**Construction:** Dynamics - Servo-Scroll Loop Tip Shear  
**Fiber Content:** 100% Solution Dyed Nylon  
**Pattern Repeat:** 24"x30"  
**Tufted Pile Weight:** 36 oz. | sq. yd.  
**Finished Pile Height:** Apx. 0.25" | 0.1875" | 0.0625"

**Primary Backing:** Woven Polypropylene  
**Secondary Backing:** Actionbac®  
**Total Weight:** Apx. 72 oz. | sq. yd.  
**Standard Width:** 12'



**Guest Room**  
Broadloom  
Introductions

Awaken the senses with our new running line Guest Room introductions for 2020. Unearth the solace a guest seeks in their private space and allow them to unlock the oasis that awaits them.

- Bar None
- Candid
- Grace
- Honest
- Pure
- Regal
- Spirited
- True





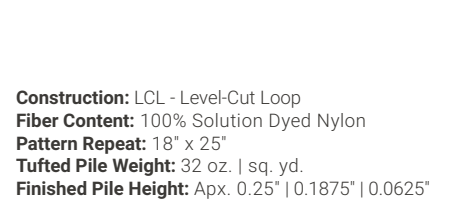
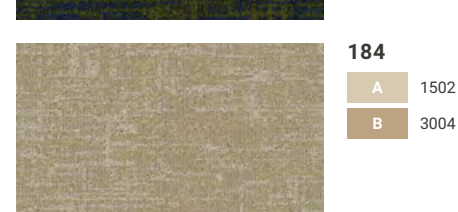
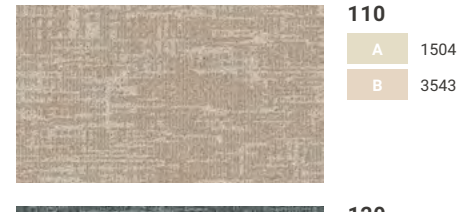
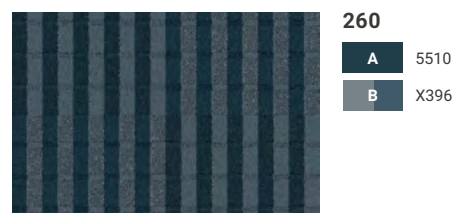
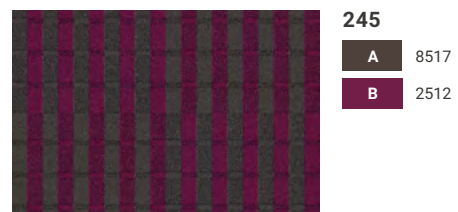


COLOR SHOWN: 294



**Construction:** Element - Enhanced Loop-Tip Shear  
**Fiber Content:** 100% Solution Dyed Nylon  
**Pattern Repeat:** 24"x24"  
**Tufted Pile Weight:** 32 oz. | sq. yd.  
**Finished Pile Height:** Apx. 0.25" | 0.1875" | 0.0625"

**Primary Backing:** Woven Polypropylene  
**Secondary Backing:** Unitary A  
**Actionbac® Total Weight:** Apx. 68 oz. | z. | sq. yd. **Standard Width:** 12'



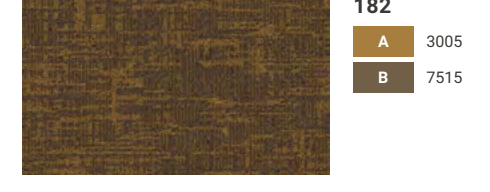
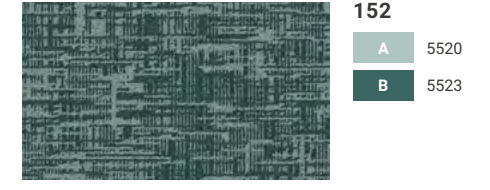
**Construction:** LCL - Level-Cut Loop  
**Fiber Content:** 100% Solution Dyed Nylon  
**Pattern Repeat:** 18" x 25"  
**Tufted Pile Weight:** 32 oz. | sq. yd.  
**Finished Pile Height:** Apx. 0.25" | 0.1875" | 0.0625"



COLOR SHOWN: 112



**Primary Backing:** Woven Polypropylene  
**Secondary Backing:** Actionbac®  
**Total Weight:** Apx. 68 oz. | sq. yd.  
**Standard Width:** 12'





**Grace** LC50



Broadloom | Guest Room



**110**  
A 1504  
B 3543



**120**  
A X391  
B X432



**121**  
A 1507  
B 8501



**122**  
A 8520  
B 8501

**Honest** LC39

Broadloom | Guest Room



**110**  
A 1504  
B 3543



**120**  
A X391  
B X432



**121**  
A 1507  
B 8501



**122**  
A 8520  
B 8501



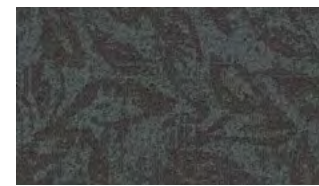
**124**  
A 8517  
B 8510



**126**  
A X432  
B 1507



**128**  
A 8537  
B 4526



**124**  
A 8517  
B 8510



**126**  
A X432  
B 1507



**128**  
A 8537  
B 4526



**130**  
A X430  
B 7503



**150**  
A 4526  
B X400



**152**  
A 5520  
B 5523



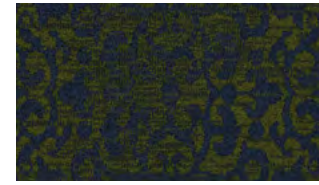
**130**  
A X430  
B 7503



**150**  
A 4526  
B X400



**152**  
A 5520  
B 5523



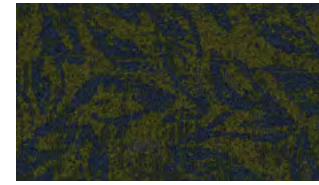
**160**  
A 5057  
B 4513



**180**  
A 3529  
B 3004



**182**  
A 3005  
B 7515



**160**  
A 5057  
B 4513



**180**  
A 3529  
B 3004



**182**  
A 3005  
B 7515



**184**  
A 1502  
B 3004



**186**  
A 3523  
B 3524



**194**  
A 7510  
B 4016



**184**  
A 1502  
B 3004



**186**  
A 3523  
B 3524



**194**  
A 7510  
B 4016

**Construction:** LCL - Level-Cut Loop  
**Fiber Content:** 100% Solution Dyed Nylon  
**Pattern Repeat:** 24" x 36"  
**Tufted Pile Weight:** 32 oz. | sq. yd.  
**Finished Pile Height:** Apx. 0.25" | 0.1875" | 0.0625"

**Primary Backing:** Woven Polypropylene  
**Secondary Backing:** Actionbac®  
**Total Weight:** Apx. 68 oz. | sq. yd.  
**Standard Width:** 12'

**Construction:** LCL - Level-Cut Loop  
**Fiber Content:** 100% Solution Dyed Nylon  
**Pattern Repeat:** 24" x 25"  
**Tufted Pile Weight:** 32 oz. | sq. yd.  
**Finished Pile Height:** Apx. 0.25" | 0.1875" | 0.0625"

**Primary Backing:** Woven Polypropylene  
**Secondary Backing:** Actionbac®  
**Total Weight:** Apx. 68 oz. | sq. yd.  
**Standard Width:** 12'

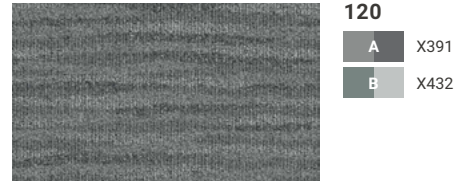




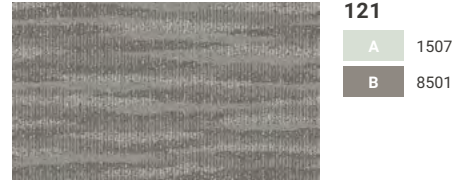
COLOR SHOWN: 120



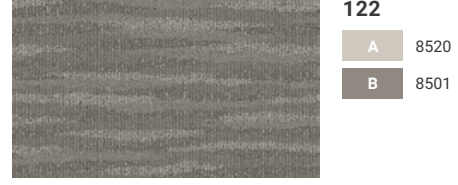
110  
A 1504  
B 3543



120  
A X391  
B X432



121  
A 1507  
B 8501



122  
A 8520  
B 8501



124  
A 8517  
B 8510



126  
A X432  
B 1507



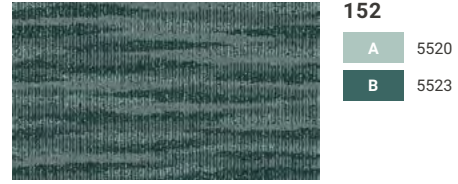
128  
A 8537  
B 4526



130  
A X430  
B 7503



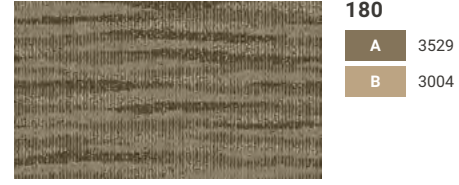
150  
A 4526  
B X400



152  
A 5520  
B 5523



160  
A 5057  
B 4513



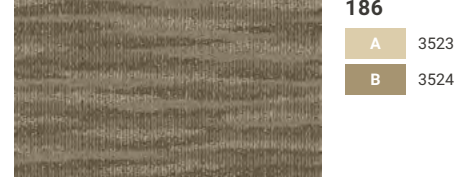
180  
A 3529  
B 3004



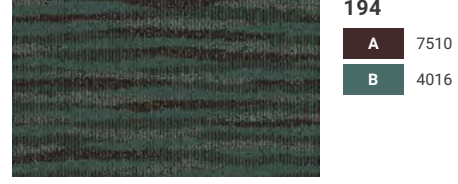
182  
A 3005  
B 7515



184  
A 1502  
B 3004



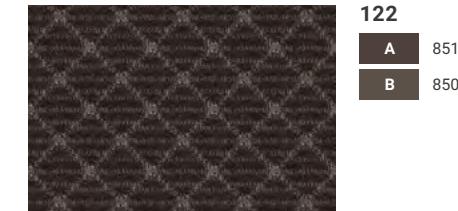
186  
A 3523  
B 3524



194  
A 7510  
B 4016



120  
A 8529  
B X429



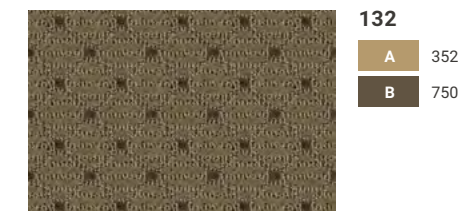
122  
A 8517  
B 8503



124  
A 3510  
B X400



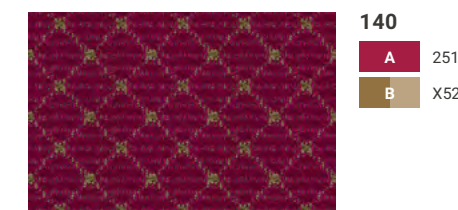
130  
A 7503  
B X333



132  
A 3525  
B 7506



134  
A 8523  
B 3005



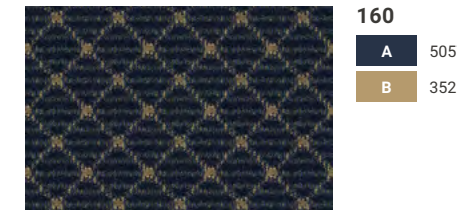
140  
A 2511  
B X52



COLOR SHOWN: 120



150  
A 4079  
B 3004



160  
A 5057  
B 3525

**Construction:** LCL - Level-Cut Loop  
**Fiber Content:** 100% Solution Dyed Nylon  
**Pattern Repeat:** 18" x 24"  
**Tufted Pile Weight:** 32 oz. | sq. yd.  
**Finished Pile Height:** Apx. 0.25" | 0.1875" | 0.0625"

**Primary Backing:** Woven Polypropylene  
**Secondary Backing:** Actionbac®  
**Total Weight:** Apx. 68 oz. | sq. yd.  
**Standard Width:** 12'

**Construction:** Dynamics - Servo-Scroll Loop Tip Shear  
**Fiber Content:** 100% Solution Dyed Nylon  
**Pattern Repeat:** 3" x 3"  
**Tufted Pile Weight:** 32 oz. | sq. yd.  
**Finished Pile Height:** Apx. 0.25" | 0.1875" | 0.0625"

**Primary Backing:** Woven Polypropylene  
**Secondary Backing:** Actionbac®  
**Total Weight:** Apx. 68 oz. | sq. yd.  
**Standard Width:** 12'

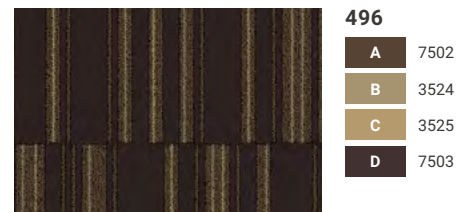




COLOR SHOWN: 422



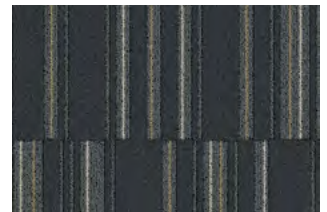
- 450**
- A 3524
- B 4516
- C 5522
- D 7508



- 496**
- A 7502
- B 3524
- C 3525
- D 7503

**Construction:** Element - Enhanced Loop-Tip Shear  
**Fiber Content:** 100% Solution Dyed Nylon  
**Pattern Repeat:** 24"x24"  
**Tufted Pile Weight:** 32 oz. | sq. yd.  
**Finished Pile Height:** Apx. 0.25" | 0.1875" | 0.0625"

**Primary Backing:** Woven Polypropylene  
**Secondary Backing:** Actionbac®  
**Total Weight:** Apx. 68 oz. | sq. yd.  
**Standard Width:** 12'



- 420**
- A 8510
- B X429
- C 3526
- D X390



- 422**
- A 8501
- B X431
- C X432
- D X400



- 430**
- A 8501
- B 8531
- C 7514
- D 8517



- 432**
- A 7506
- B 3513
- C 5523
- D 7503



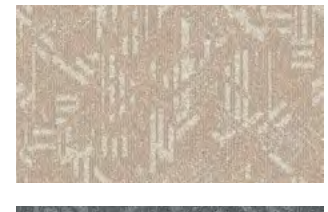
- 434**
- A 3525
- B 1502
- C 1504
- D 7021



- 440**
- A 2511
- B 3005
- C 4512
- D 2006



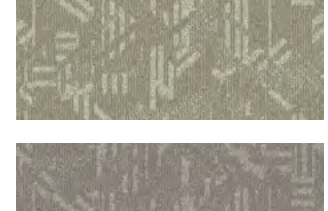
- 499**
- A 8522
- B 8523
- C 3526
- D 8002



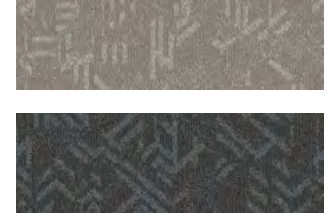
- 110**
- A 1504
- B 3543



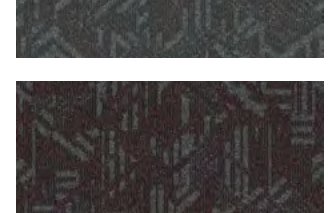
- 120**
- A X391
- B X432



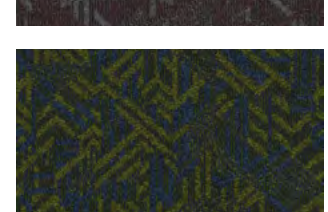
- 121**
- A 1507
- B 8501



- 122**
- A 8520
- B 8501



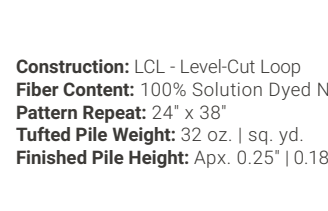
- 124**
- A 8517
- B 8510



- 130**
- A X430
- B 7503



- 160**
- A 5057
- B 4513



- 184**
- A 1502
- B 3004

**Construction:** LCL - Level-Cut Loop  
**Fiber Content:** 100% Solution Dyed Nylon  
**Pattern Repeat:** 24" x 38"  
**Tufted Pile Weight:** 32 oz. | sq. yd.  
**Finished Pile Height:** Apx. 0.25" | 0.1875" | 0.0625"



COLOR SHOWN: 120



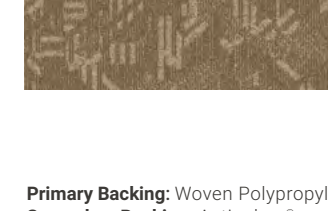
- 126**
- A X432
- B 1507



- 150**
- A 4526
- B X400



- 180**
- A 3529
- B 3004



- 186**
- A 3523
- B 3524



- 128**
- A 8537
- B 4526



- 152**
- A 5520
- B 5523



- 182**
- A 3005
- B 7515



- 194**
- A 7510
- B 4016

**Primary Backing:** Woven Polypropylene  
**Secondary Backing:** Actionbac®  
**Total Weight:** Apx. 68 oz. | sq. yd.  
**Standard Width:** 12'





Tarkett Hospitality  
285 Kraft Drive  
Dalton, GA 30721  
800.871.3211

[www.tarketthospitality.com](http://www.tarketthospitality.com)