

CONTOUR

Lexmark + Hospitality

285 Kraft Dr. | Dalton, GA 30721 | 800-871-3211 | lexmarkhospitality.com | edgebylexmark.com

Lexmark + Hospitality

CONTOUR

Embrace the role of explorer.

Become an adventurer.

Observe the details, and something remarkable happens.

That which we take for granted is revealed to be nuanced, fascinating.

Seek. Wander. Be mindful.

Charting the subtle changes in elevation of the earth, putting lines to them, creates an intricate web of interrelated lines. And the lines themselves comprise patterns so charming, so complex, yet so familiar. They envelop you.

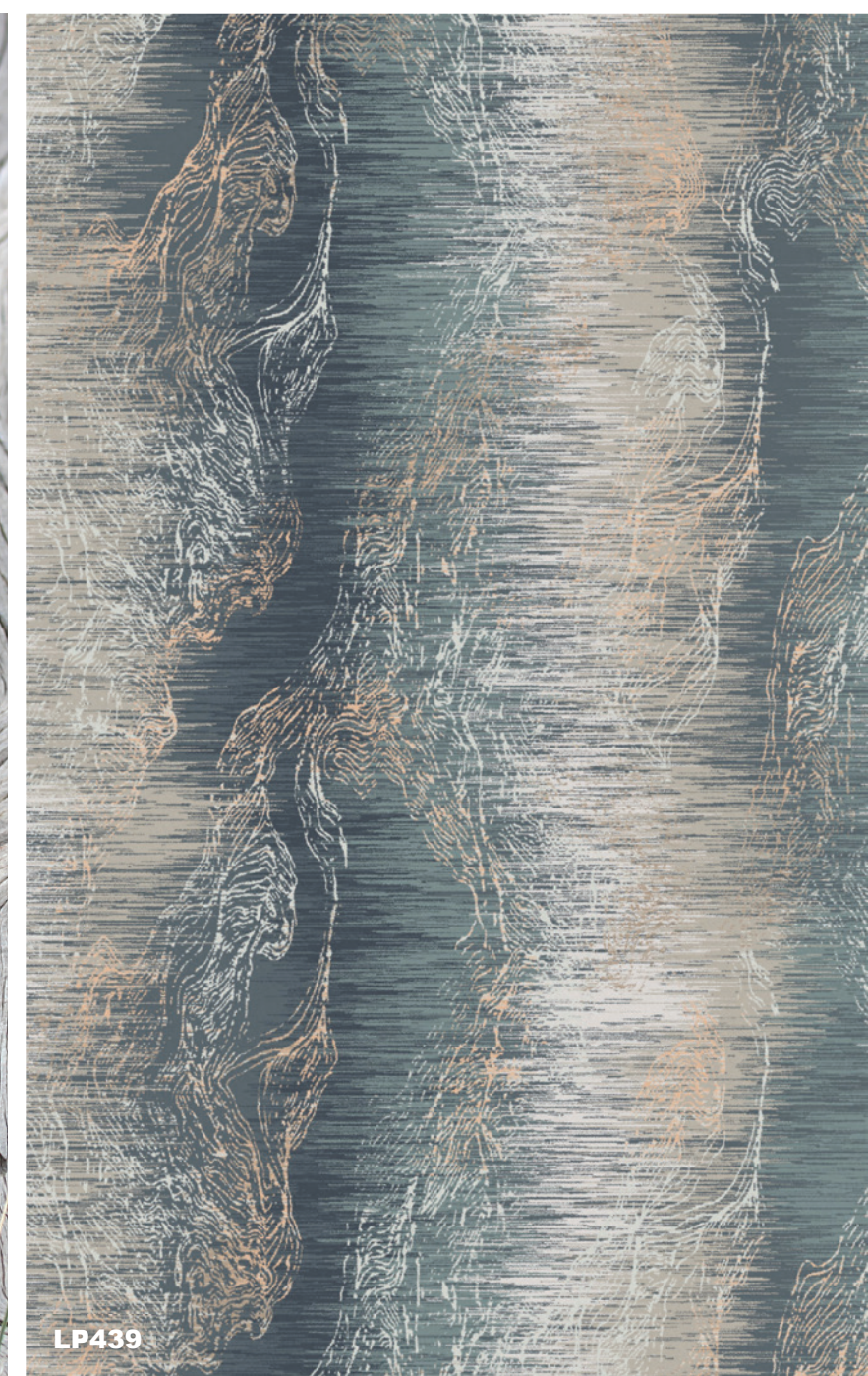
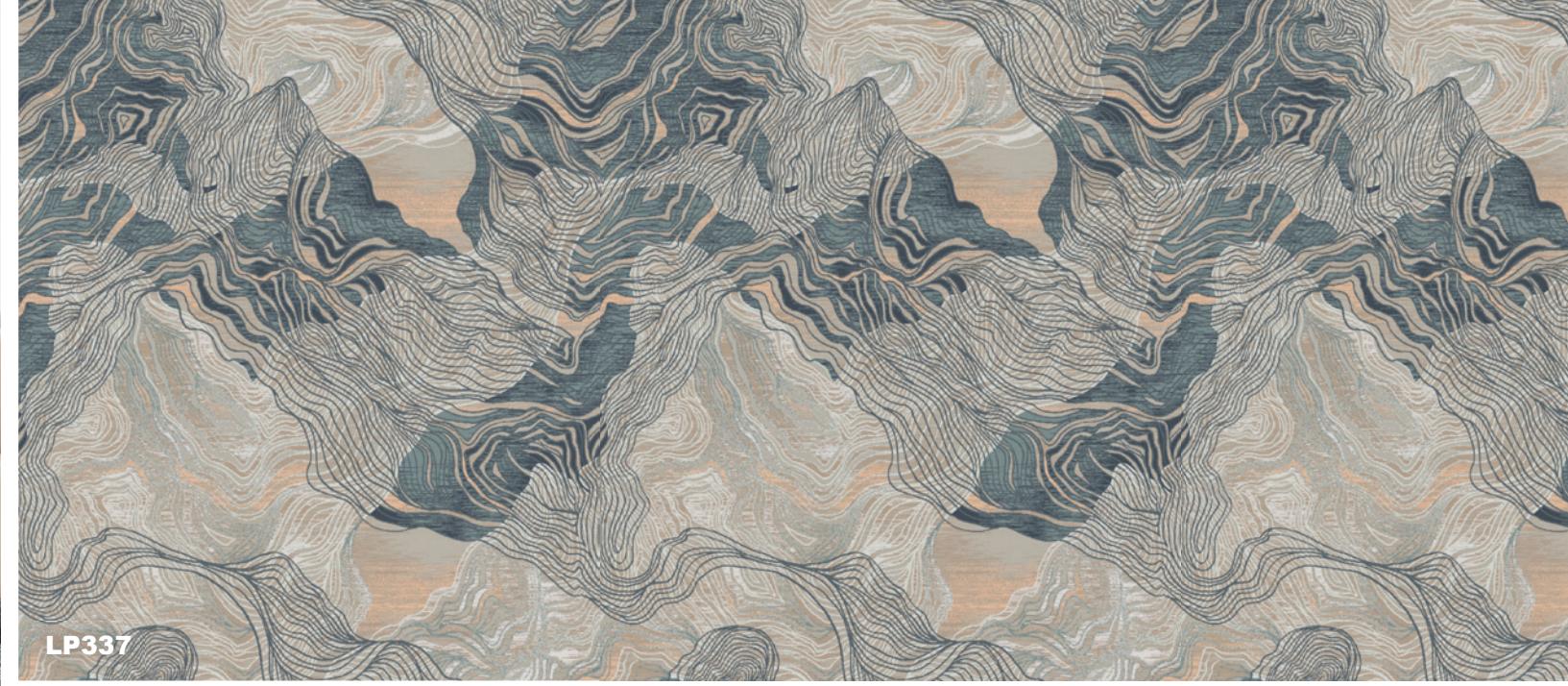
The explorer becomes part of the terrain they traverse.

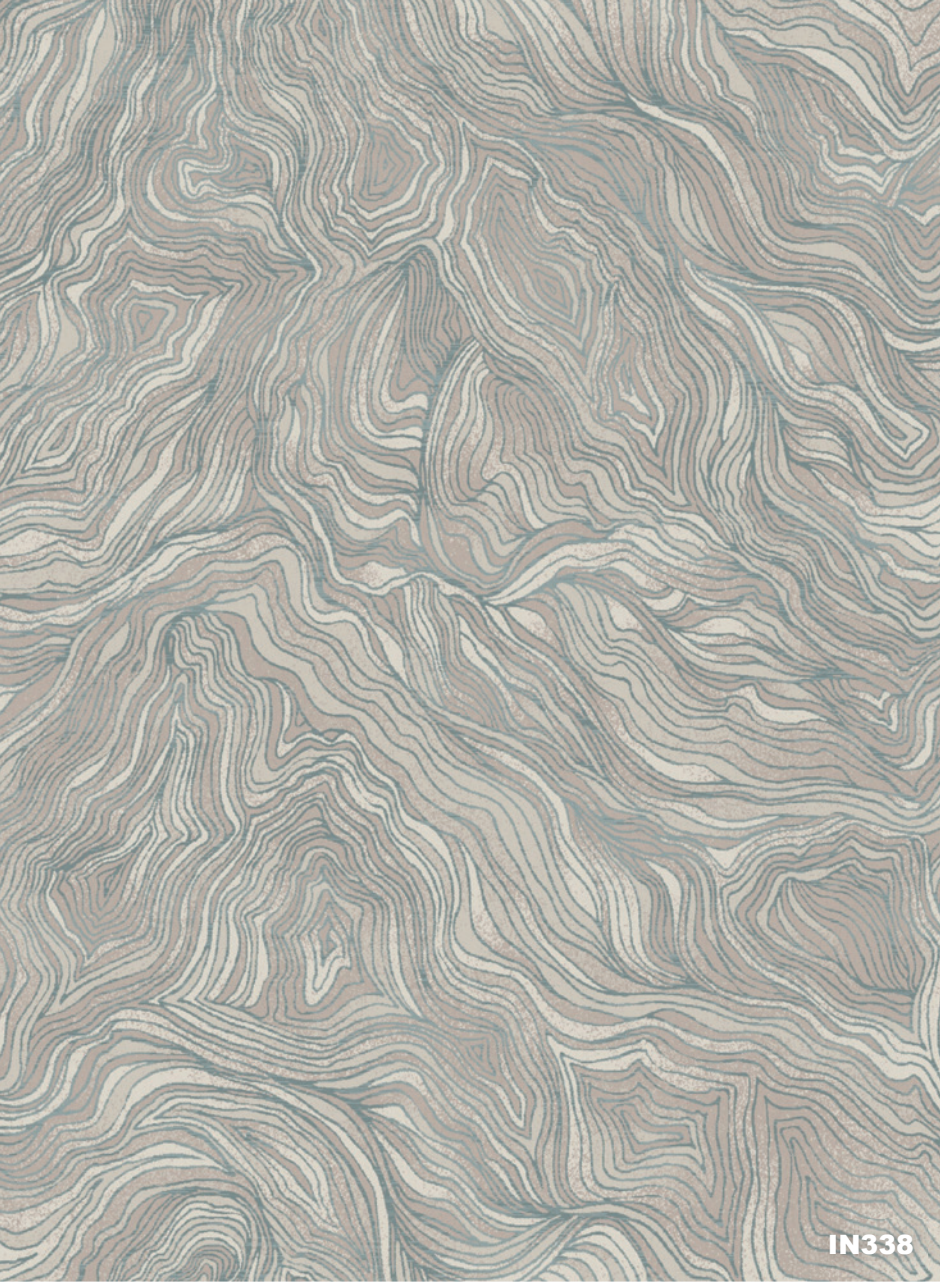


V234



V240

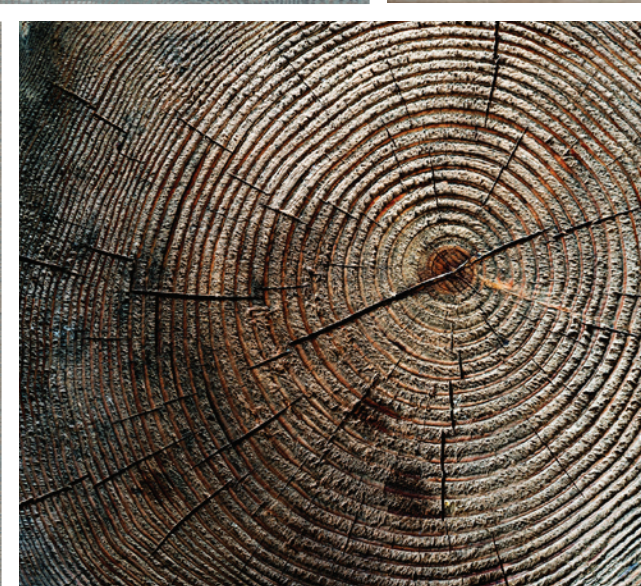
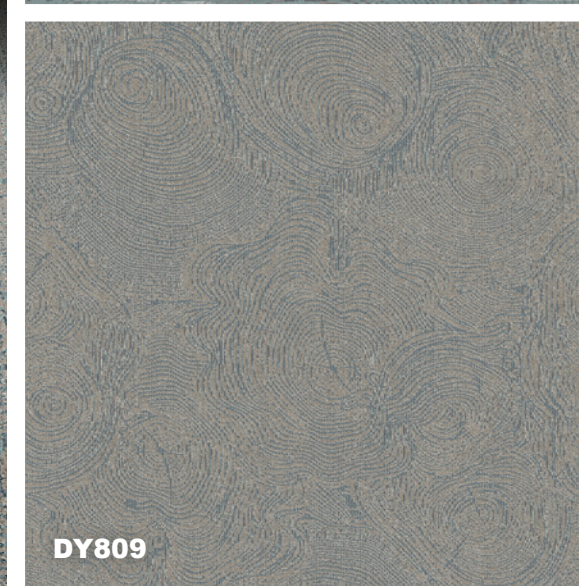
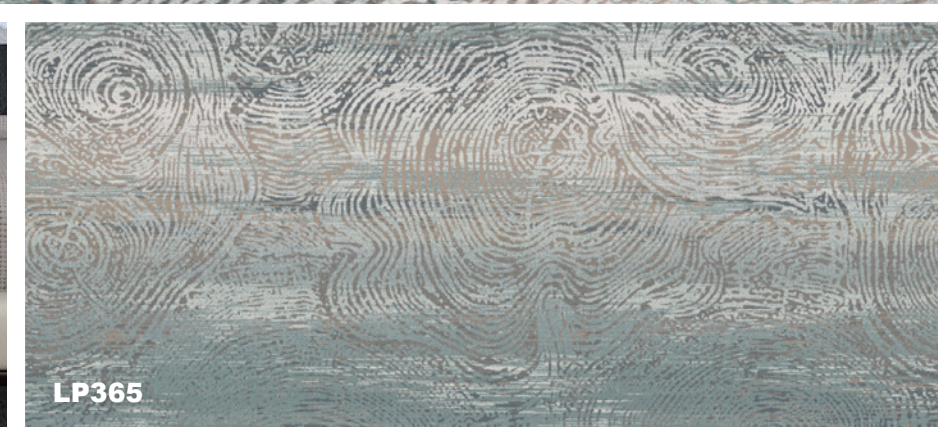


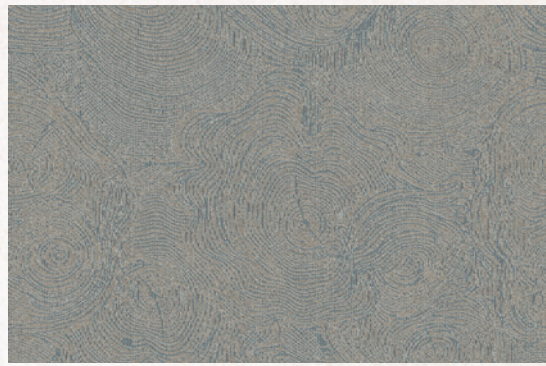


IN338



LP438





- A 8535
- B 8502
- C 8537

DY809 CONTOUR I **COLOR 120**

Construction: Dynamics
Primary Backing: Woven Polypropylene

Fiber Content: 100% Solution Dyed Nylon
Secondary Backing: Actionbac®

Pattern Repeat: 90" x 90"
Total Weight: 68 oz. | sq. yd.

Tufted Pile Weight: 32 oz. | sq. yd.
Yarn Size: 1360 | 2 ply

Finished Pile Height: 0.25" | 0.1875" | 0.0625"
Standard Width: 15'



- A 8530
- B 8520
- C 8535
- D 8502
- E 7501
- F 3537
- G 8529
- H 8537

LP337 CONTOUR II **COLOR 220**

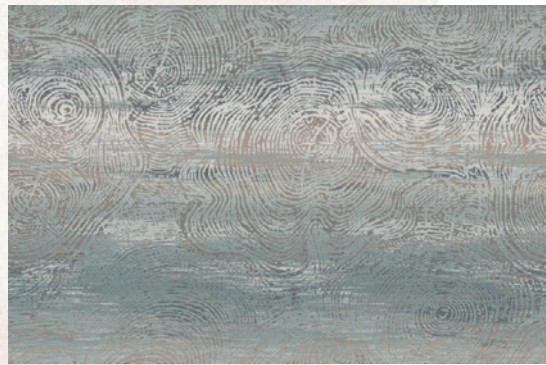
Construction: Legacy Plus
Primary Backing: Woven Polypropylene

Fiber Content: 100% Solution Dyed Nylon
Secondary Backing: Unitary with Actionbac®

Pattern Repeat: 180" x 238"
Total Weight: 72 oz. | sq. yd.

Tufted Pile Weight: 36 oz. | sq. yd.
Yarn Size: 1360 | 2 ply

Finished Pile Height: 0.25" | 0.1875" | 0.0625"
Standard Width: 15'



- A 8537
- B 8502
- C 8530
- D 7501
- E 8520
- F 8536

LP365 CONTOUR III **COLOR 320**

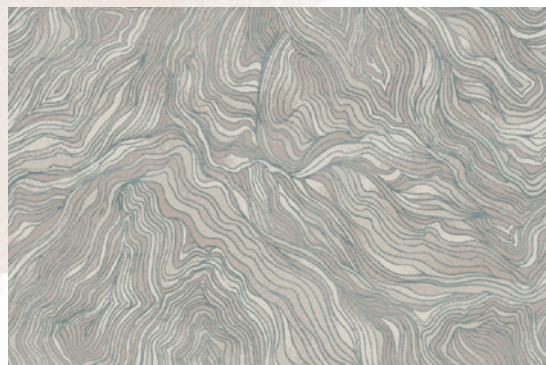
Construction: Legacy Plus
Primary Backing: Woven Polypropylene

Fiber Content: 100% Solution Dyed Nylon
Secondary Backing: Unitary with Actionbac®

Pattern Repeat: 180" x 180"
Total Weight: 72 oz. | sq. yd.

Tufted Pile Weight: 36 oz. | sq. yd.
Yarn Size: 1360 | 2 ply

Finished Pile Height: 0.25" | 0.1875" | 0.0625"
Standard Width: 15'



- A 8536
- B 8502
- C 8535
- D 8519

IN338 CONTOUR IV **COLOR 420**

Construction: Intrepid
Primary Backing: Woven Polypropylene

Fiber Content: 100% Solution Dyed Nylon
Secondary Backing: Unitary with Actionbac®

Pattern Repeat: 180" x 241"
Total Weight: 78 oz. | sq. yd.

Tufted Pile Weight: 42 oz. | sq. yd.
Yarn Size: 1360 | 2 ply

Finished Pile Height: 0.25" | 0.1875" | 0.0625"
Standard Width: 15'



- A 8537
- B 8502
- C 7501
- D 8519
- E 3528
- F 8536
- G 3537
- H 8530

V234 CONTOUR V **COLOR 520**

Construction: Vivid
Primary Backing: Woven Polypropylene

Fiber Content: 100% Solution Dyed Nylon
Secondary Backing: Unitary with Actionbac®

Pattern Repeat: 180" x 241"
Total Weight: 78 oz. | sq. yd.

Tufted Pile Weight: 42 oz. | sq. yd.
Yarn Size: 1360 | 2 ply

Finished Pile Height: 0.2813" | 0.25" | 0.0625"
Standard Width: 15'



- A 8537
- B 8502
- C 7501
- D 8519
- E 3528
- F 8536
- G 3537
- H 8530

V240 CONTOUR VI **COLOR 620**

Construction: Vivid
Primary Backing: Woven Polypropylene

Fiber Content: 100% Solution Dyed Nylon
Secondary Backing: Unitary with Actionbac®

Pattern Repeat: 90" x 356"
Total Weight: 78 oz. | sq. yd.

Tufted Pile Weight: 42 oz. | sq. yd.
Yarn Size: 1360 | 2 ply

Finished Pile Height: 0.2813" | 0.25" | 0.0625"
Standard Width: 15'



- A 8537
- B 8502
- C 8530
- D 7501
- E 8535
- F 3528
- G 8536
- H 8519

LP364 CONTOUR VII **COLOR 720**

Construction: Legacy Plus
Primary Backing: Woven Polypropylene

Fiber Content: 100% Solution Dyed Nylon
Secondary Backing: Unitary with Actionbac®

Pattern Repeat: 180" x 113"
Total Weight: 72 oz. | sq. yd.

Tufted Pile Weight: 36 oz. | sq. yd.
Yarn Size: 1360 | 2 ply

Finished Pile Height: 0.25" | 0.1875" | 0.0625"
Standard Width: 15'



- C 8530
- D 7501
- E 8535
- F 8520

LP438 CONTOUR VIII **COLOR 820**

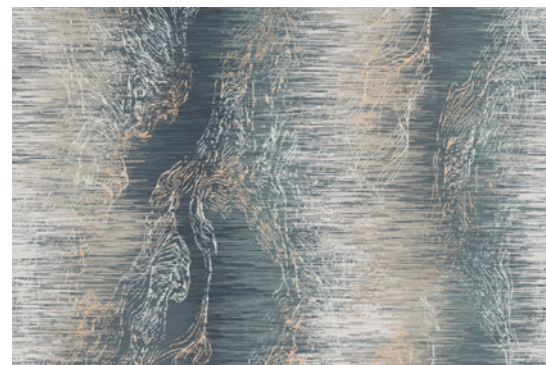
Construction: Legacy Plus
Primary Backing: Woven Polypropylene

Fiber Content: 100% Solution Dyed Nylon
Secondary Backing: Unitary with Actionbac®

Pattern Repeat: 36" x 48"
Total Weight: 72 oz. | sq. yd.

Tufted Pile Weight: 36 oz. | sq. yd.
Yarn Size: 1360 | 2 ply

Finished Pile Height: 0.25" | 0.1875" | 0.0625"
Standard Width: 15'



- A 8537
- B 8502
- C 8530
- D 7501
- E 8535
- F 8520
- G 3537
- H 8529

LP439 CONTOUR IX **COLOR 920**

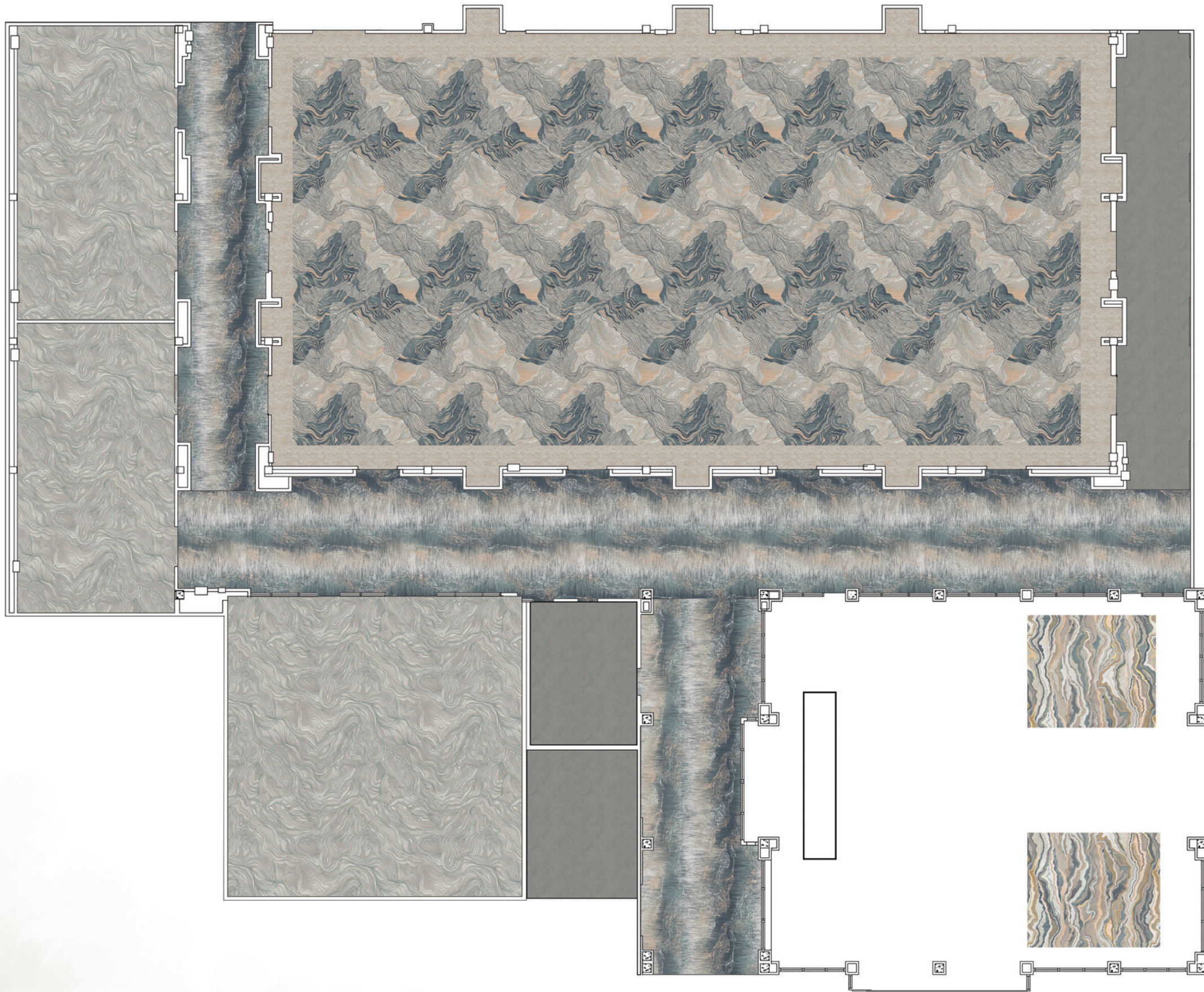
Construction: Legacy Plus
Primary Backing: Woven Polypropylene

Fiber Content: 100% Solution Dyed Nylon
Secondary Backing: Unitary with Actionbac®

Pattern Repeat: 180" x 250"
Total Weight: 72 oz. | sq. yd.

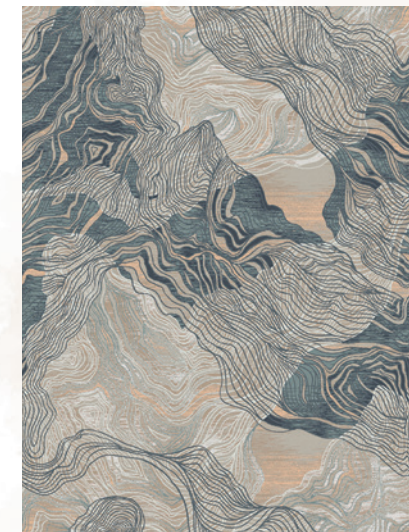
Tufted Pile Weight: 36 oz. | sq. yd.
Yarn Size: 1360 | 2 ply

Finished Pile Height: 0.25" | 0.1875" | 0.0625"
Standard Width: 15'



The beauty and the mystery of Contour.

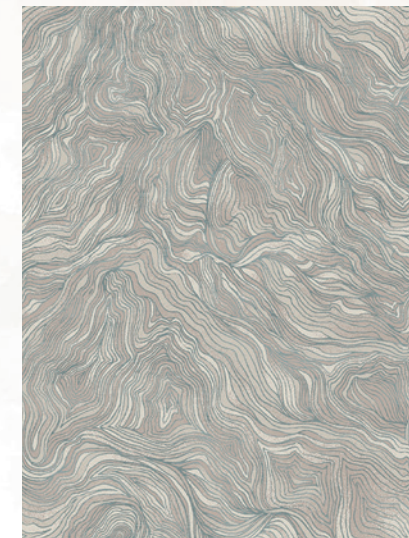
It elevates spaces into extraordinary places.
And simple experiences into memorable adventures.



LP337-220



LP439-920



IN338-420



V234-520



DY809-120



LP438-820