

WYNDHAM
TRAVELODGE



 **Tarkett Hospitality**



- Product Type: Corridor
- Style Number: V0136
- Color Number: 462
- Specs: 36 oz. , 12' Width
- Pattern Repeat: 72" x 96"



- Product Type: Guest Room
- Style Number: V0232
- Color Number: 162
- Specs: 32 oz. – 12' or 13'6" Width
- Pattern Repeat: 24" x 24"



- Product Type: Covebase
- Style Number: 728S
- Color Number: 7503
- Specs: 4" or 6"

WYNDHAM

TRAVELODGE



WYNDHAM®



Manufacturer: Tarkett
Address: 285 Kraft Drive
Dalton, GA 30721
Phone: 706.277.3000
Contact: Jackie Passaro
Jackie.Passaro@tarkett.com
Web: www.tarketthospitality.com

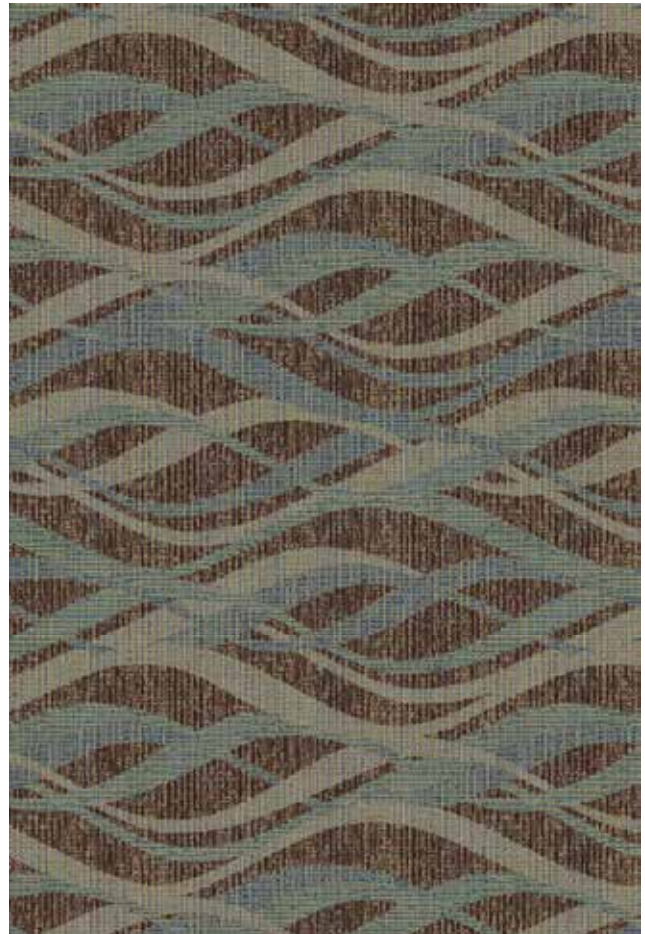
Style Name: V0136 Travel Lodge Corridor
Color: 462
Machine Type: Dynamics
Pattern Repeat: 72" x 96"
Radiant Panel: Class 1
Smoke Density: Less Than 450
Warranty: 10 Year Wear Guarantee
Recycled Content: Lextron Essentials has 10% pre-consumer recycled content.

Environmental Information: CRI Green Label Plus™ Certified
Construction: D Dynamics-Servo Loop Scroll Tip Shear
Gauge: 1/10th
Tufted Pile Weight: 36 oz.
Finished Pile Weight: 72 oz.
Finished Pile Height: High .25, Med .1875, Low .0625
Width: 12'

Additional Information:

Carpet should be installed in accordance with the Carpet and Rug Institute's standard CRI-104. Carpet must be over manufacturer's recommended pad.

- Pattern streaks and banding are visually apparent streaking in patterned carpet resulting from linear juxtaposition of pattern elements visible in both length and width direction. IT IS NOT A CARPET DEFECT, but is inherent in solution dyed graphic and cut/loop patterns.
- All Specifications subject to normal manufacturing tolerance.



WYNDHAM

TRAVELODGE



- Product Type: Corridor
- Style Number: V0136
- Color Number: 462
- Specs: 36 oz. , 12' Width

Tarkett Hospitality

WYNDHAM

TRAVELODGE



WYNDHAM®



Manufacturer: Tarkett
Address: 285 Kraft Drive
Dalton, GA 30721
Phone: 706.277.3000
Contact: Jackie Passaro
Jackie.Passaro@tarkett.com
Web: www.tarketthospitality.com

Style Name: V0232 Travelodge Guest Room
Color: 162
Machine Type: Element
Pattern Repeat: 24" x 1"
Radiant Panel: Class 1
Smoke Density: Less Than 450
Warranty: 10 Year Wear Guarantee
Recycled Content: Lextron Essentials has
10% pre-consumer recycled content.
Static Control: Below 3.5 KV
Environmental
Information: CRI Green Label Plus™ Certified
Construction: E Element-Enhanced Loop Tip Shear
Gauge: 1/10th
Tufted Pile Weight: 32 oz.
Finished Pile Weight: 68 oz.
Finished Pile Height: High .25, Med .1875, Low .0625

Additional Information:

Carpet should be installed in accordance with the Carpet and Rug Institute's standard CRI-104. Carpet must be over manufacturer's recommended pad.

- Pattern streaks and banding are visually apparent streaking in patterned carpet resulting from linear juxtaposition of pattern elements visible in both length and width direction. IT IS NOT A CARPET DEFECT, but is inherent in solution dyed graphic and cut/loop patterns.

- All Specifications subject to normal manufacturing tolerance.



WYNDHAM
TRAVELODGE



- Product Type: Guest Room
- Style Number: V0232
- Color Number: 162
- Specs: 32 oz. – 12' or 13'6" Width

Tarkett Hospitality