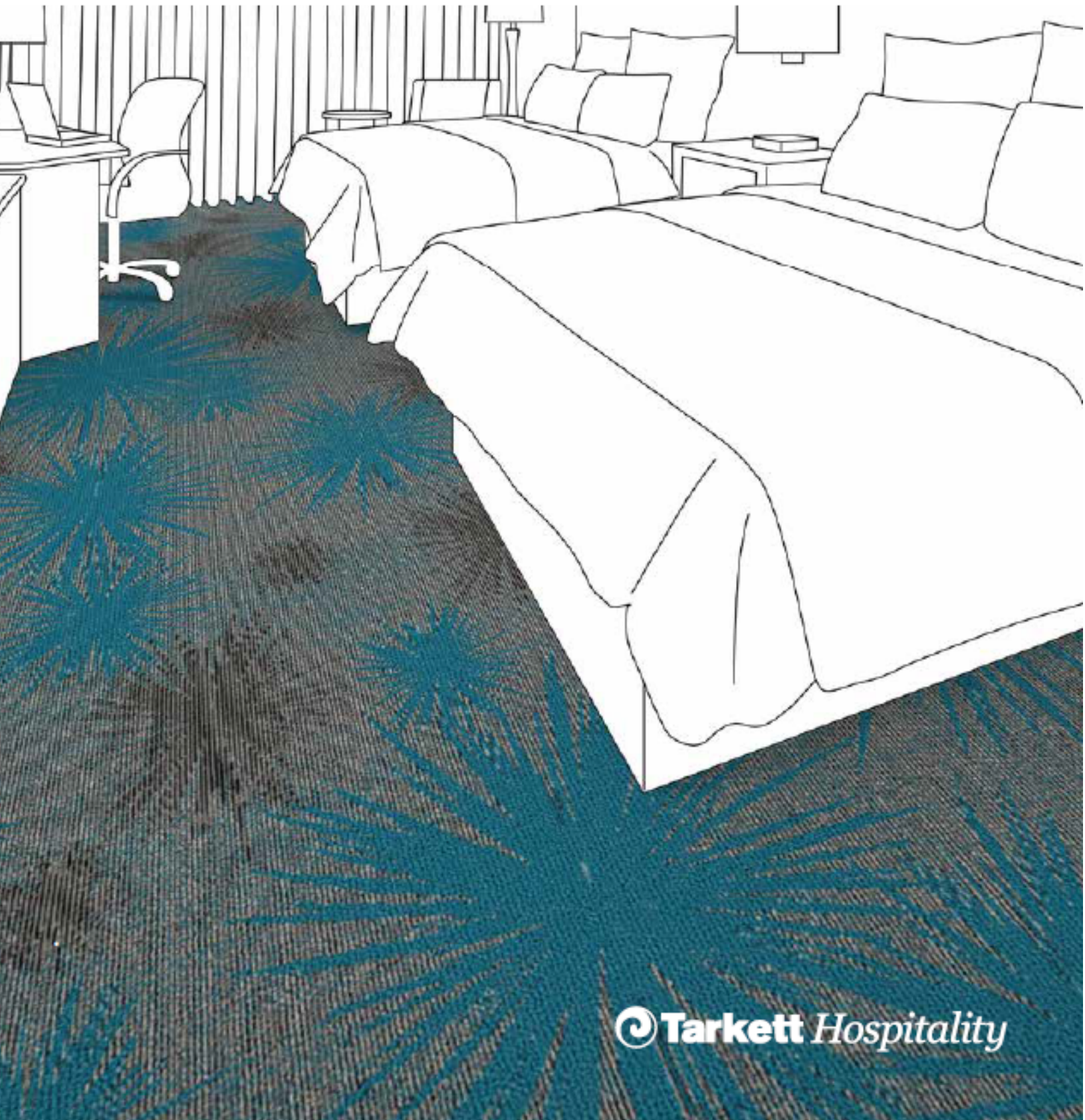


WYNDHAM  
DAYS INN DAWN



# WYNDHAM

## DAYS INN OVERVIEW

Manufacturer: Tarkett

Address: 285 Kraft Drive  
Dalton, GA 30721

Phone: M 703.919.4751 OR  
706.277.3000,X104

Contact: Jackie Passaro  
Jackie.Passaro@tarkett.com  
OR  
wyndhamorders@tarkett.com

Web: www.tarketthospitality.com

### Choose Tarkett

- + Approved Styles
- + Lowest Pricing
- + Fast Delivery
- + 10-Year Warranty
- + Broadloom Carpet
- + Lextron Solution-Dyed Nylon



- Product Type: Guest Room
- Style Number: D0332
- Color Number: 0448
- Specs: 32 oz. – 12' Width
- Pattern Repeat: 144" x 144"
- Wyndham Number: CP-01A-ALT



- Product Type: Guest Room
- Style Number: D0332
- Color Number: 0368
- Specs: 32 oz. – 12' Width
- Pattern Repeat: 144" x 144"
- Wyndham Number: CP-01A



- Product Type: Corridor
- Style Number: D0336
- Color Number: 0448
- Specs: 36 oz. – 12' Width
- Pattern Repeat: 72" x 72"
- Wyndham Number: CP-02A-ALT



- Product Type: Corridor
- Style Number: D0336
- Color Number: 368
- Specs: 36 oz. – 12' Width
- Pattern Repeat: 72" x 72"
- Wyndham Number: CP-02A



# WYNDHAM

DAYS INN GUEST ROOM

## CP-01A

Manufacturer: Tarkett  
Address: 285 Kraft Drive  
Dalton, GA 30721  
Phone: 706.277.3000  
Contact: Jackie Passaro  
Jackie.Passaro@tarkett.com  
Web: www.tarkett.com

---

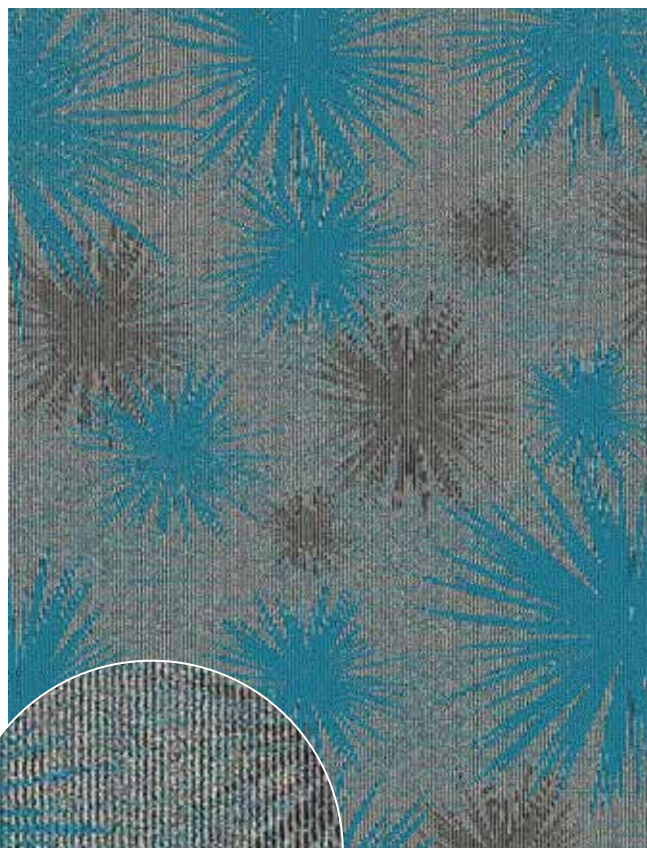
Project Type: Guest Room  
Style Name: D0332 Days Inn  
Color: 0368  
Machine Type: Dynamics  
Pattern Repeat: 144"W x 144"L  
Radiant Panel Class 1  
Smoke Density Less Than 450  
Warranty 10 Year Wear Guarantee  
Recycled Content Lextron Essentials has 10% pre-consumer recycled content.

Environmental Information: CRI Green Label Plus™ Certified  
Construction: Dynamics-Servo Loop Scroll Tip Shear  
Gauge: 1/10th  
Tufted Pile Weight: 32 oz.  
Finished Pile Weight: 68 oz.  
Finished Pile Height: High .25, Med .1875, Low .0625

Carpet should be installed in accordance with the Carpet and Rug Institute's standard CRI-104. Carpet must be over manufacturer's recommended pad.

- Pattern streaks and banding are visually apparent streaking in patterned carpet resulting from linear juxtaposition of pattern elements visible in both length and width direction. IT IS NOT A CARPET DEFECT, but is inherent in solution dyed graphic and cut/loop patterns.

- All Specifications subject to normal manufacturing tolerance.



A-5051



B-8004



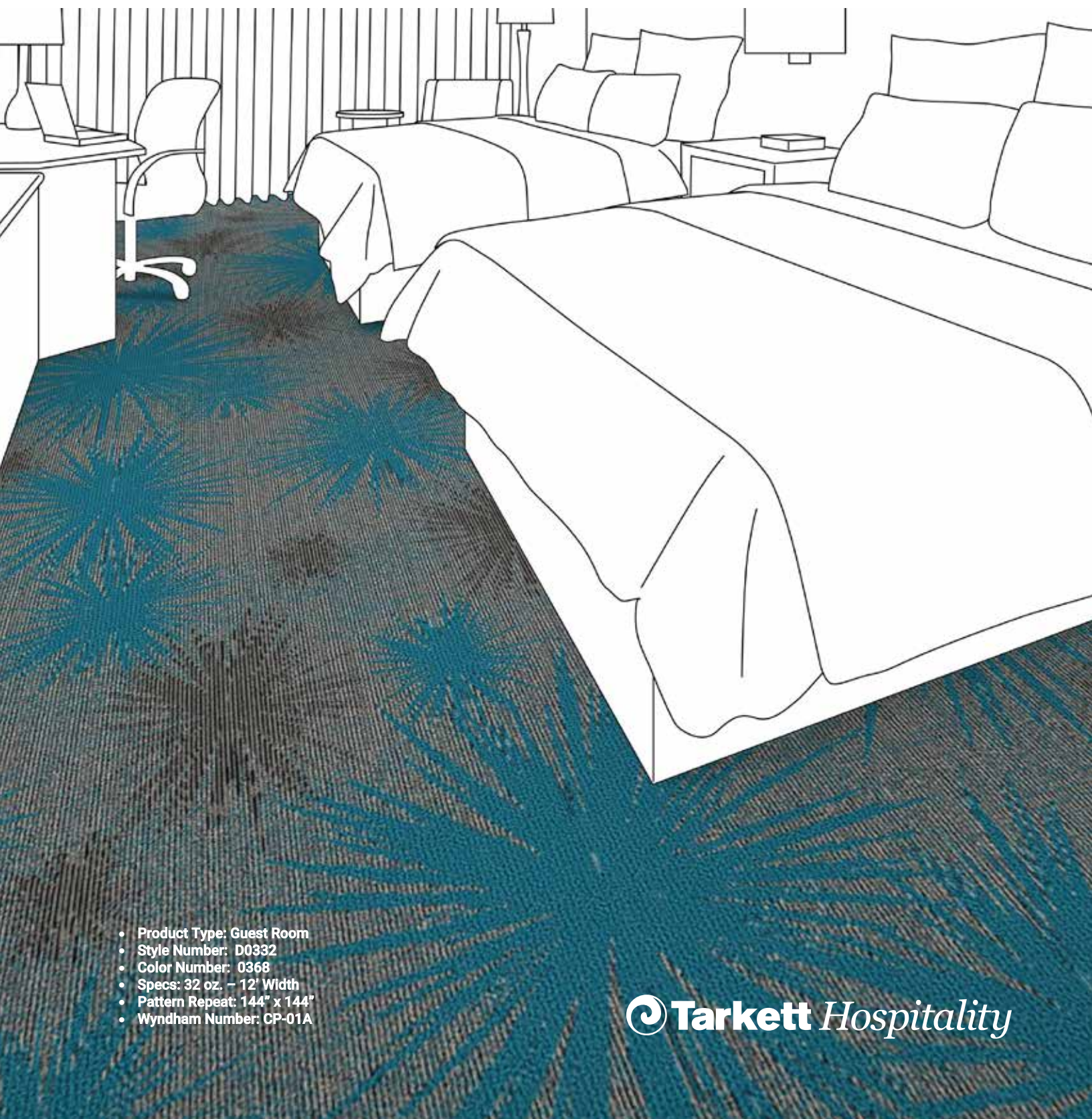
C-8526



# WYNDHAM

DAYS INN GUEST ROOMS

CP-01A



- Product Type: Guest Room
- Style Number: D0332
- Color Number: 0368
- Specs: 32 oz. – 12' Width
- Pattern Repeat: 144" x 144"
- Wyndham Number: CP-01A

 **Tarkett** Hospitality

# WYNDHAM

## DAYS INN CORRIDOR

### CP-02A

Manufacturer: Tarkett  
Address: 285 Kraft Drive  
Dalton, GA 30721  
Phone: 706.277.3000  
Contact: Jackie Passaro  
Jackie.Passaro@tarkett.com  
Web: www.tarkett.com

---

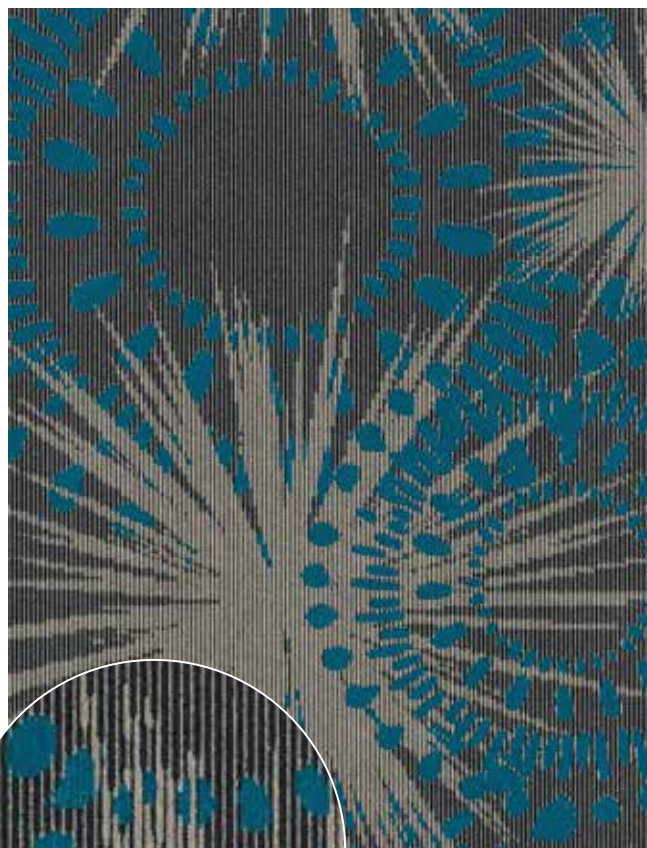
Project Type: Corridor  
Style Name: D0336 Days Inn  
Color: 368  
Machine Type: Dynamics  
Pattern Repeat: 72" x 72"  
Radiant Panel Class 1  
Smoke Density Less Than 450  
Warranty 10 Year Wear Guarantee  
Recycled Content Lextron Essentials has 10% pre-consumer recycled content.

Environmental  
Information: CRI Green Label Plus™ Certified  
Construction: Dynamics-Servo Loop Scroll Tip Shear  
Gauge: 1/10th  
Tufted Pile Weight: 36 oz.  
Finished Pile Weight: 72 oz.  
Finished Pile Height: High .25, Med .1875, Low .0625

Carpet should be installed in accordance with the Carpet and Rug Institute's standard CRI-104. Carpet must be over manufacturer's recommended pad.

- Pattern streaks and banding are visually apparent streaking in patterned carpet resulting from linear juxtaposition of pattern elements visible in both length and width direction. IT IS NOT A CARPET DEFECT, but is inherent in solution dyed graphic and cut/loop patterns.

- All Specifications subject to normal manufacturing tolerance.



A-5051



B-8004



C-8526



# WYNDHAM

DAYS INN CORRIDOR

CP-02A



- Product Type: Corridor
- Style Number: D0336
- Color Number: 368
- Specs: 36 oz. - 12' Width
- Wyndham Nummer: CP-02A

 **Tarkett** Hospitality

# WYNDHAM

## DAYS INN GUEST ROOMS

### CP-01A-ALT

Manufacturer: Tarkett  
Address: 285 Kraft Drive  
Dalton, GA 30721  
Phone: 706.277.3000  
Contact: Jackie Passaro  
Jackie.Passaro@tarkett.com  
Web: www.tarkett.com

---

Project Type: Guest Rooms  
Style Name: D0332 Days Inn  
Color: 0448  
Machine Type: Dynamics  
Pattern Repeat: 144"W x 144"L"  
Radiant Panel: Class 1  
Smoke Density: Less Than 450  
Warranty: 10 Year Wear Guarantee  
Recycled Content: Lextron Essentials has 10% pre-consumer recycled content.

Environmental Information: CRI Green Label Plus™ Certified  
Construction: Dynamics-Servo Loop Scroll Tip Shear  
Gauge: 1/10th  
Tufted Pile Weight: 32oz  
Finished Pile Weight: 68oz  
Finished Pile Height: High .25, Med .1875, Low .0625

Carpet should be installed in accordance with the Carpet and Rug Institute's standard CRI-104. Carpet must be over manufacturer's recommended pad.

- Pattern streaks and banding are visually apparent streaking in patterned carpet resulting from linear juxtaposition of pattern elements visible in both length and width direction. IT IS NOT A CARPET DEFECT, but is inherent in solution dyed graphic and cut/loop patterns.

- All Specifications subject to normal manufacturing tolerance.



A-3033



B-8004



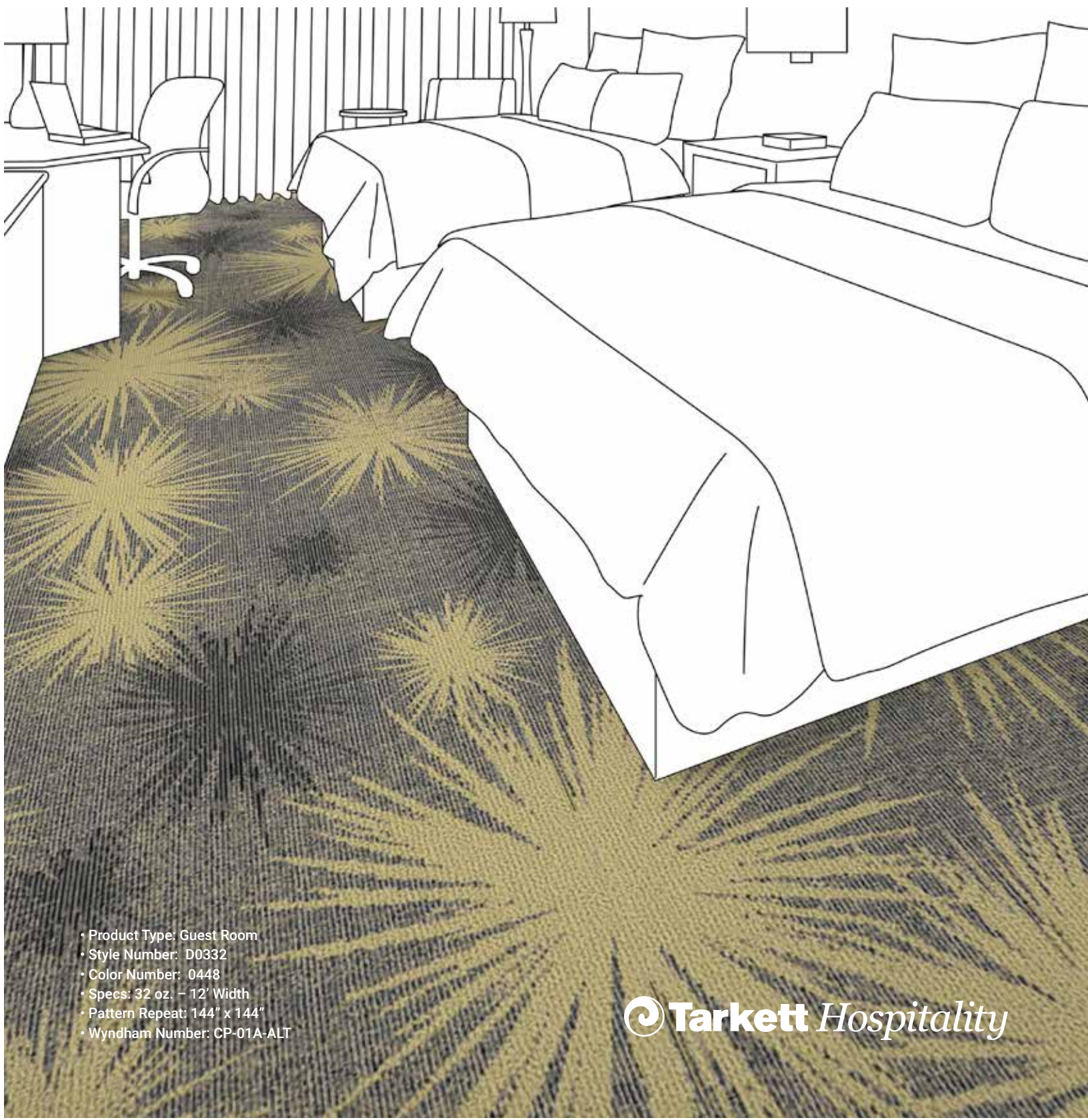
C-8526



# WYNDHAM

DAYS INN GUEST ROOMS

CP-01A-ALT



- Product Type: Guest Room
- Style Number: D0332
- Color Number: 0448
- Specs: 32 oz. – 12' Width
- Pattern Repeat: 144" x 144"
- Wyndham Number: CP-01A-ALT

 **Tarkett** Hospitality



# WYNDHAM

## DAYS INN CORRIDOR

CP-02A-ALT

Manufacturer: Tarkett  
Address: 285 Kraft Drive  
Dalton, GA 30721  
Phone: 706.277.3000  
Contact: Jackie Passaro  
Jackie.Passaro@tarkett.com  
Web: www.tarkett.com

---

Project Type: Corridor  
Style Name: D0336 Days Inn  
Color: 0448  
Machine Type: Dynamics  
Pattern Repeat: 72" x 72"  
Radiant Panel Class 1  
Smoke Density Less Than 450  
Warranty 10 Year Wear Guarantee  
Recycled Content Lextron Essentials has 10% pre-consumer recycled content.

Environmental  
Information: CRI Green Label Plus™ Certified  
Construction: Dynamics-Servo Loop Scroll Tip Shear  
Gauge: 1/10th  
Tufted Pile Weight: 36 oz.  
Finished Pile Weight: 72 oz.  
Finished Pile Height: High .25, Med .1875, Low .0625

Carpet should be installed in accordance with the Carpet and Rug Institute's standard CRI-104. Carpet must be over manufacturer's recommended pad.

- Pattern streaks and banding are visually apparent streaking in patterned carpet resulting from linear juxtaposition of pattern elements visible in both length and width direction. IT IS NOT A CARPET DEFECT, but is inherent in solution dyed graphic and cut/loop patterns.

- All Specifications subject to normal manufacturing tolerance.



A-3033



B-8004



C-8526

# WYNDHAM

DAYS INN CORRIDOR



- Product Type: Corridor
- Style Number: D0336
- Color Number: 0448
- Specs: 36 oz. – 12' Width
- Wyndham Number: CP-02A-ALT

 **Tarkett** Hospitality



---

**Tarkett Hospitality**

285 Kraft Drive  
Dalton, GA 30721  
800.871.3211  
**tarkettna.com**

For more accurate color and pattern representation, we suggest you visit an authorized Tarkett dealer to view an actual product sample.  
All third-party trademarks are the property of their respective owners.