

WYNDHAM

BAYMONT



WYNDHAM[®]



Tarkett Hospitality

WYNDHAM

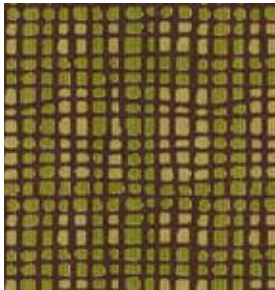
BAYMONT OVERVIEW



Manufacturer: Tarkett
Address: 285 Kraft Drive
Dalton, GA 30721
Phone: 706.277.3000
Contact: Jackie Passaro
Jackie.Passaro@tarkett.com
Web: www.tarketthospitality.com

Choose Tarkett

- + Approved Styles
- + Lowest Pricing
- + Fast Delivery
- + 10-Year Warranty
- + Broadloom Carpet
- + Lextron Solution-Dyed Nylon



- Product Type: Corridor, Lobby, Meeting Room
- Style Number: Y0136 (DYN W916)
- Color Number: 197
- Specs: 36 oz. – 12' Width
- Pattern Repeat: 24" x 24"



- Product Type: Cove Base
- Style Number: 728S
- Color Number: 7513
- Specs: 4"

For use with Y0136



- Product Type: Guest Room
- Style Number: Y0132 (Perimeter 3229)
- Color Number: 197
- Specs: 32 oz. – 12' Width
- Pattern Repeat: 6" x 6"



- Product Type: Cove Base
- Style Number: 728S
- Color Number: 7009
- Specs: 4"

For use with Y0136



- Product Type: Back Of House
- Style Number: Y0236 (Pursuit 3622)
- Color Number: 197
- Specs: 36 oz. – 12' Width
- Pattern Repeat: 24" x 24"



- Product Type: Cove Base
- Style Number: 728S
- Color Number: 7503
- Specs: 4"

For use with Y0236

WYNDHAM

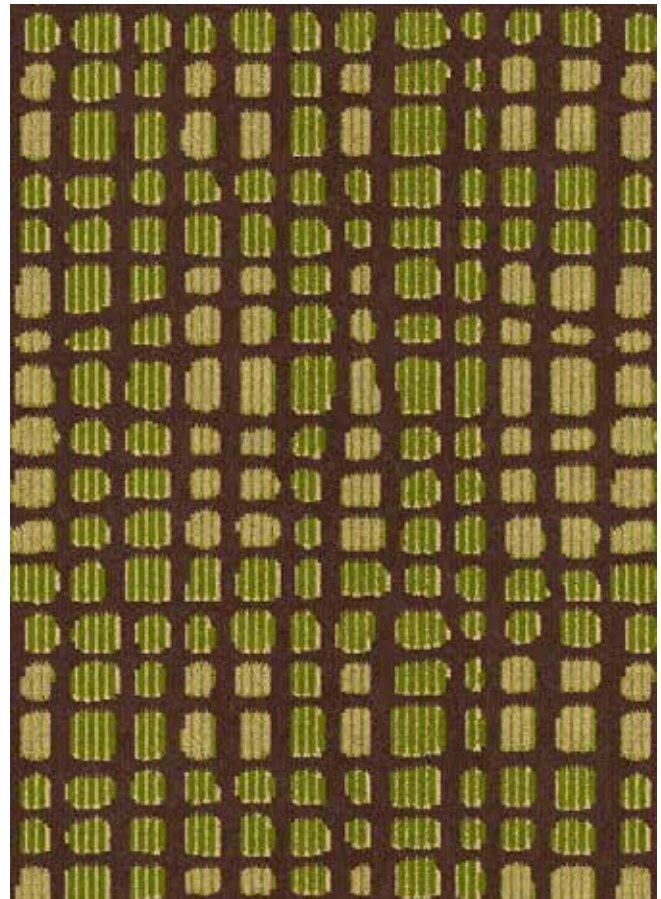
BAYMONT CORRIDOR/PUBLIC SPACE



Manufacturer: Tarkett
Address: 285 Kraft Drive
Dalton, GA 30721
Phone: 706.277.3000
Contact: Jackie Passaro
Jackie.Passaro@tarkett.com
Web: www.tarkett.com

Style Name: Y0136 Baymont Inn
Color: 197
Project Type: Corridor/Public Space
Machine Type: Dynamics
Pattern Repeat: 24" x 24"
Radiant Panel: Class 1
Smoke Density: Less Than 450
Warranty: 10 Year Wear Guarantee
Recycled Content: Lextron Essentials has 10% pre-consumer recycled content.

Environmental Information: CRI Green Label Plus™ Certified
Construction: D Dynamics-Servo Loop Scroll Tip Shear
Gauge: 1/10th
Tufted Pile Weight: 36 oz.
Finished Pile Weight: 68 oz. or 72 oz.
Finished Pile Height: High .25, Med .1875, Low .0625



Enviro-Green yarn has 10% pre-consumer recycled content.
Recommended for Moderate (Rooms) carpet traffic levels.
NOTE: Due to the manufacturing process of a tip shear product, the finished yarn weight will vary more than normal manufacturing tolerances and side match cannot be guaranteed.

Carpet should be installed in accordance with the Carpet and Rug Institute's standard CRI-104. Carpet must be over manufacturer's recommended pad. Pattern streaks and banding are visually apparent streaking in patterned carpet resulting from linear juxtaposition of pattern elements visible in both length and width direction. IT IS NOT A CARPET DEFECT, but is inherent in solution dyed graphic and cut/loop patterns. All Specifications subject to normal manufacturing tolerance.

WYNDHAM

BAYMONT CORRIDOR/PUBLIC SPACE



- Product Type: Corridor, Lobby, Meeting Room
- Style Number: Y0136 (DYN W916)
- Color Number: 197
- Specs: 36 oz. - 12' Width



WYNDHAM

BAYMONT GUEST ROOMS



Manufacturer: Tarkett
Address: 285 Kraft Drive
Dalton, GA 30721
Phone: 706.277.3000
Contact: Jackie Passaro
Jackie.Passaro@tarkett.com
Web: www.tarkett.com

Style Name: Y0132 Baymont Inn
Color: 197
Project Type: Guest Rooms
Machine Type: Element
Pattern Repeat: 6" x 6"
Radiant Panel: Class 1
Smoke Density: Less Than 450
Warranty: 10 Year Wear Guarantee
Recycled Content: Lextron Essentials has 10% pre-consumer recycled content.
Static Control: Below 3.5 KV
Environmental Information: CRI Green Label Plus™ Certified
Construction: E Element-Enhanced Loop Tip Shear
Gauge: 1/10th
Tufted Pile Weight: 32 oz.
Finished Pile Weight: 68 oz.
Finished Pile Height: High .25, Med .1875, Low .0625

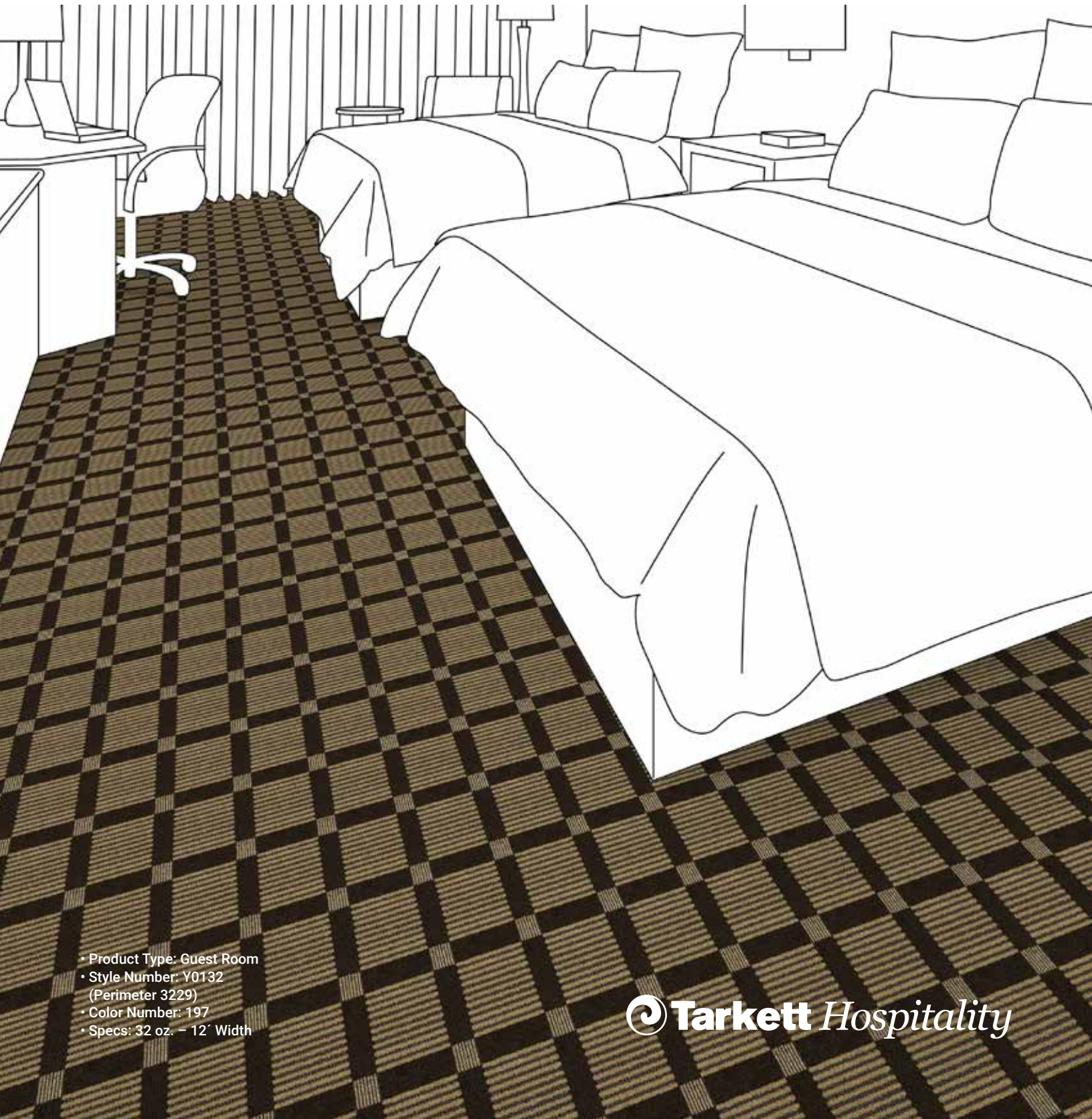


Enviro-Green yarn has 10% pre-consumer recycled content.
Recommended for Moderate (Rooms) carpet traffic levels.
NOTE: Due to the manufacturing process of a tip shear product, the finished yarn weight will vary more than normal manufacturing tolerances and side match cannot be guaranteed.

Carpet should be installed in accordance with the Carpet and Rug Institute's standard CRI-104. Carpet must be over manufacturer's recommended pad. Pattern streaks and banding are visually apparent streaking in patterned carpet resulting from linear juxtaposition of pattern elements visible in both length and width direction. IT IS NOT A CARPET DEFECT, but is inherent in solution dyed graphic and cut/loop patterns. All Specifications subject to normal manufacturing tolerance.

WYNDHAM

BAYMONT GUEST ROOMS



- Product Type: Guest Room
- Style Number: Y0132
(Perimeter 3229)
- Color Number: 197
- Specs: 32 oz. - 12' Width



WYNDHAM

BAYMONT BACK OF HOUSE



Manufacturer: Tarkett
Address: 285 Kraft Drive
Dalton, GA 30721
Phone: 706.277.3000
Contact: Jackie Passaro
Jackie.Passaro@tarkett.com
Web: www.tarkett.com

Style Name: Y0236 Baymont Inn
Color: 197
Project Type: Back of House
Machine Type: Dynamics
Pattern Repeat: 24" x 24"
Radiant Panel: Class 1
Smoke Density: Less Than 450
Warranty: 10 Year Wear Guarantee
Recycled Content: Lextron Essentials has 10% pre-consumer recycled content.

Environmental Information: CRI Green Label Plus™ Certified
Construction: D Dynamics-Servo Loop Scroll Tip Shear
Gauge: 1/10th
Tufted Pile Weight: 36 oz.
Finished Pile Weight: 68 oz. or 72 oz.
Finished Pile Height: High .25, Med .1875, Low .0625



Enviro-Green yarn has 10% pre-consumer recycled content.
Recommended for Moderate (Rooms) carpet traffic levels.
NOTE: Due to the manufacturing process of a tip shear product, the finished yarn weight will vary more than normal manufacturing tolerances and side match cannot be guaranteed.

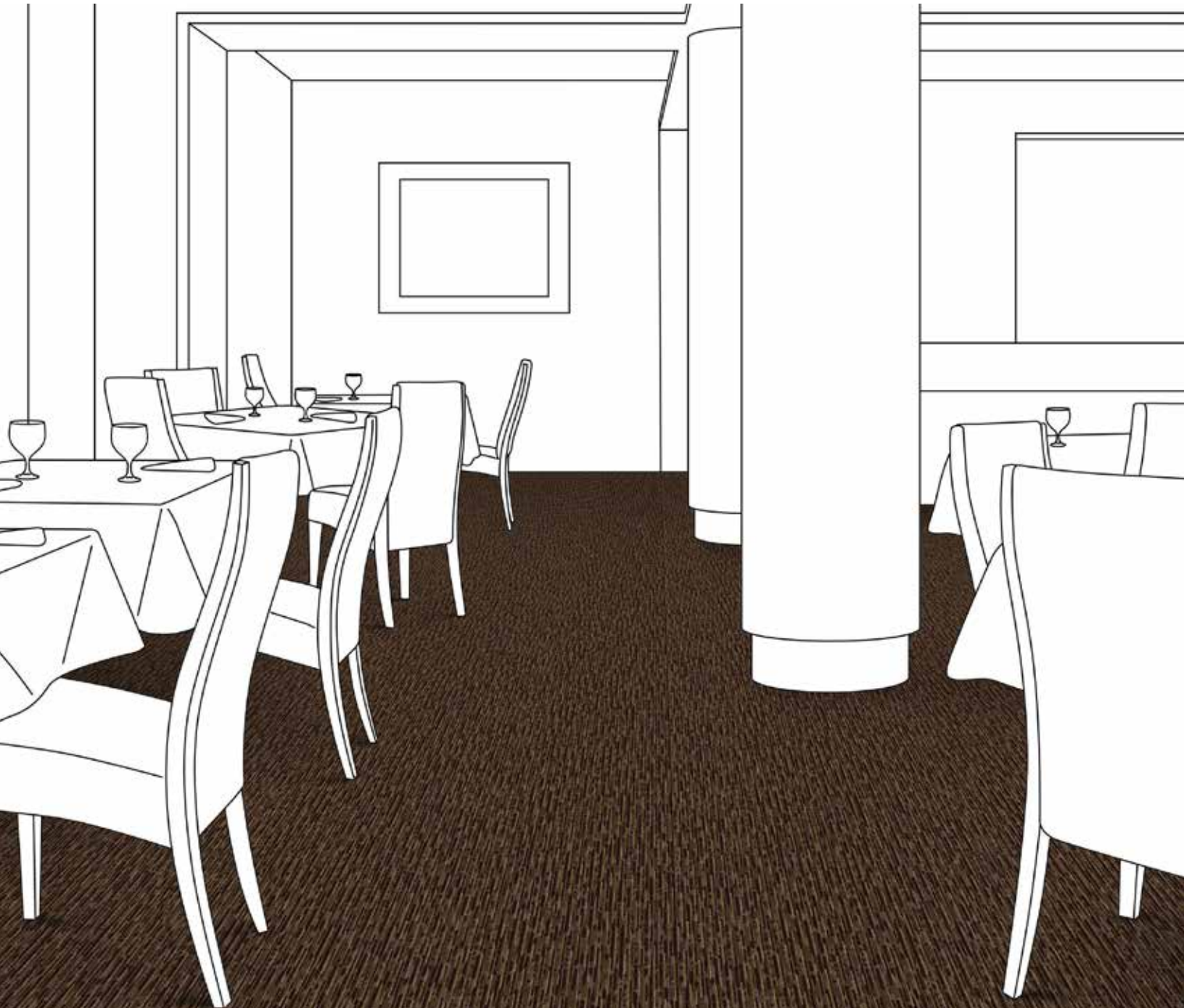
Carpet should be installed in accordance with the Carpet and Rug Institute's standard CRI-104. Carpet must be over manufacturer's recommended pad. Pattern streaks and banding are visually apparent streaking in patterned carpet resulting from linear juxtaposition of pattern elements visible in both length and width direction. IT IS NOT A CARPET DEFECT, but is inherent in solution dyed graphic and cut/loop patterns. All Specifications subject to normal manufacturing tolerance.

WYNDHAM

BAYMONT BACK OF HOUSE



WYNDHAM®



- Product Type: Back Of House
- Style Number: Y0236
(Perset 3622)
- Color Number: 197
- Specs: 36 oz. - 12' Width

Tarkett Hospitality