

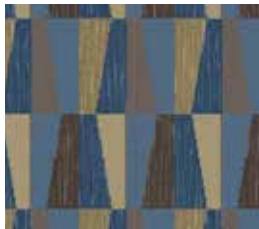
# OVERVIEW



**Manufacturer:** Tarkett  
**Address:** 285 Kraft Drive  
 Dalton, GA 30721  
**Phone:** 706.277.3000  
**Contact:** Jackie Passaro  
 Jackie.Passaro@tarkett.com  
**Web:** www.tarketthospitality.com

**Choose Tarkett**  
 + Approved Styles  
 + Lowest Pricing  
 + Fast Delivery

+ 10-Year Warranty  
 + Broadloom Carpet  
 + Lextron Solution-Dyed Nylon

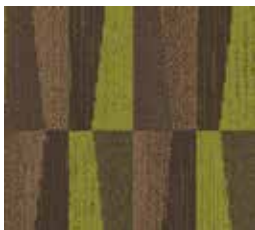


- Product Type: Guest Corridor - MICROCOOL
- Wyndham Item Number: CP-01A
- Style Number: 00136
- Color Number: 168 Cool (DYN W 093)
- Specs: 36 oz., 12' or 14' Width
- Pattern Repeat: 12" x 24"



- Product Type: Guest Room - MICROCOOL
- Wyndham Item Number: CP-02A
- Style Number: 00132 (ELT V 998)
- Color Number: 168
- Specs: 32 oz., 12' Width
- Pattern Repeat: 24" x 24"
- Area Rug Available: QQ/King Area (GR-801-AR)
- Area Rug Size: 22" x 72"

Rugs Available



- Product Type: Guest Corridor -MICROFRESH
- Wyndham Item Number: CP-01B
- Style Number: 00136 (DYN W 094)
- Color Number: 155 Fresh
- Specs: 36 oz., 12' or 14' Width
- Pattern Repeat: 12" x 24"



- Product Type: Guest Room - MICROFRESH
- Wyndham Item Number: CP-02B
- Style Number: 00132 (ELT V 999)
- Color Number: 155 Fresh
- Specs: 32 oz., 12' Width
- Pattern Repeat: 24" x 24"
- Area Rug Available: QQ/King Area (GR-801-AR)
- Area Rug Size: 22" x 72"

Rugs Available



- Product Type: Guest Corridor - MICROZEST
- Wyndham Item Number: CP-01C
- Style Number: 00136 (DYN W 095)
- Color Number: 148 Zest
- Specs: 36 oz., 12' Width
- Pattern Repeat: 12" x 24"



- Product Type: Guest Room - MICROZEST
- Wyndham Item Number: CP-02C
- Style Number: 00132 (ELT V 997)
- Color Number: 148 Zest
- Specs: 32 oz., 12' Width
- Pattern Repeat: 24" x 24"
- Area Rug Available: QQ/King Area (GR-801-AR)
- Area Rug Size: 22" x 72"

Rugs Available



- Product Type: Meeting Room
- Wyndham Item Number:
- Style Number: 00236 (903 Enchant)
- Color Number: 530
- Specs: 36 oz., 15' Width
- Pattern Repeat: 90" x 90"



- Product Type: Back of House
- Wyndham Item Number:
- Style Number: 002326
- Color Number: 296
- Specs: 36 oz., 12' Width
- Pattern Repeat: .4" x 1.2"

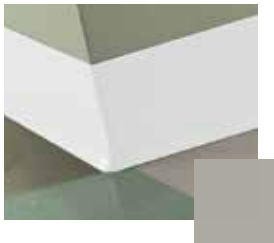
# OVERVIEW



- Product Type: Traditional Vinyl Wall Base
- Style Number: CBT 469
- Item Number: RB-01
- Color: 469 Mystify
- Specs: 4" x 4 1/8" Toeless
- Area: Carpeted Guest Rooms, Corridors, Lobby, Back of House



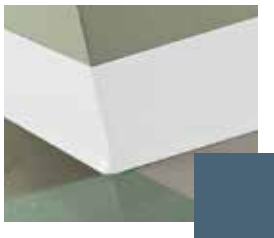
- Product Type: Guest Room Carpet Covebase
- Wyndham Item Number: CP-03/CP-03ALT
- Style Number: 728S
- Color Number: 8525
- Specs: 4"
- ALT Spec: 6"



- Product Type: Traditional Vinyl Wall Base
- Style Number: CB 469
- Item Number: RB-01
- Color: 469 Mystify
- Specs: 4" x 4 1/8" Toe
- Area: LVT & Tiled Guest Rooms, Corridors, Lobby, Back of House

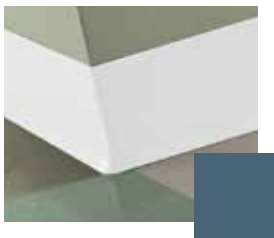


- Product Type: Corridor Carpet Covebase
- Wyndham Item Number: CP-04/CP-04ALT
- Style Number: 728S
- Color Number: 8525
- Specs: 4"
- ALT Spec: 6"



- Product Type: Traditional Vinyl Wall Base
- Style Number: CBT 84
- Item Number: RB-01
- Color: 84 Blue Jean
- Specs: 4" x 4 1/8" Toeless
- Area: Carpeted Lobby, Fitness, Accent Wall

LVT styles are available, please contact your Wyndham Procurement Provider for more information.



- Product Type: Traditional Vinyl Wall Base
- Style Number: CB 84
- Item Number: RB-01
- Color: 84 Blue Jean
- Specs: 4" x 4 1/8" Toe
- Area: LVT & Tiled Lobby, Fitness, Accent Wall

# MICROZEST SCHEME

## CORRIDOR



- Product Type: Corridor
- Style Number: Microzest 00136 (DYN W095)
- Color Number: 148
- Specs: 36 oz., 12' Width



# MICROZEST SCHEME

## CORRIDOR



Product Type:	Microtel Corridor
Style Name:	00136 Microzest
Color:	148
Machine Type:	Dynamics
Pattern Repeat:	24" x 72"
Radiant Panel:	Class 1
Smoke Density:	Less Than 450
Warranty:	10 Year Wear Guarantee
Recycled Content:	Lextron Essentials has 10% pre-consumer recycled content.
Environmental Information:	CRI Green Label Plus™ Certified
Construction:	Dynamics-Servo Loop Scroll Tip Shear
Gauge:	1/10th
Pile Weight:	36 oz
Finished Pile Weight	72 oz
Finished Pile Height	High .25", Med .1875", Low .0625"



### Additional Information

Carpet should be installed in accordance with the Carpet and Rug Institute's standard CRI-104. Carpet must be over manufacturer's recommended pad.

- Pattern streaks and banding are visually apparent streaking in patterned carpet resulting from linear juxtaposition of pattern elements visible in both length and width direction. IT IS NOT A CARPET DEFECT, but is inherent in solution dyed graphic and cut/loop patterns.
- All Specifications subject to normal manufacturing tolerance.

# MICROZEST SCHEME

## GUEST ROOM



- Product Type: Guest Room
- Style Number: Microzest 00132 (ELT V997)
- Color Number: 148
- Specs: 32 oz., 12' Width



# MICROZEST SCHEME

## GUEST ROOM



Product Type:	Microtel Guest Room
Style Name:	00132 Microzest
Color:	148
Machine Type:	Element
Pattern Repeat:	24" x 24"
Radiant Panel:	Class 1
Smoke Density:	Less Than 450
Warranty:	10 Year Wear Guarantee
Recycled Content:	Lextron Essentials has 10% pre-consumer recycled content.
Environmental Information:	CRI Green Label Plus™ Certified
Construction:	Element-Enhanced Loop Tip Shear
Gauge:	1/10th
Pile Weight:	32 oz
Finished Pile Weight	68 oz
Finished Pile Height	High .25", Med .1875", Low .0625"



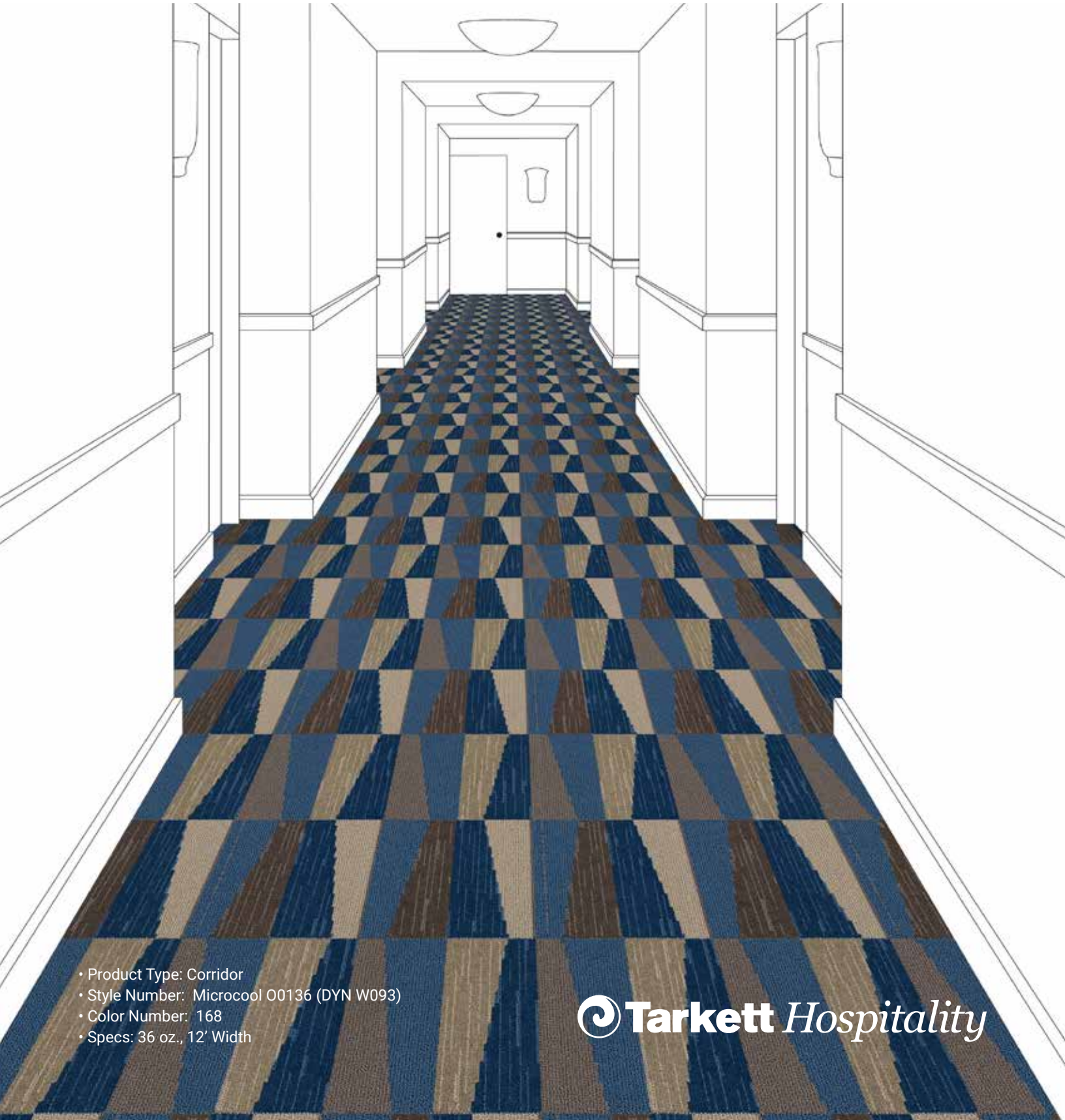
### Additional Information

Carpet should be installed in accordance with the Carpet and Rug Institute's standard CRI-104. Carpet must be over manufacturer's recommended pad.

- Pattern streaks and banding are visually apparent streaking in patterned carpet resulting from linear juxtaposition of pattern elements visible in both length and width direction. IT IS NOT A CARPET DEFECT, but is inherent in solution dyed graphic and cut/loop patterns.
- All Specifications subject to normal manufacturing tolerance.

# MICROCOOL SCHEME

CORRIDOR



- Product Type: Corridor
- Style Number: Microcool 00136 (DYN W093)
- Color Number: 168
- Specs: 36 oz., 12' Width





# MICROCOOL SCHEME

## CORRIDOR



Product Type:	Microtel Corridor
Style Name:	00136 Microcool
Color:	148
Machine Type:	Dynamics
Pattern Repeat:	24" x 72"
Radiant Panel:	Class 1
Smoke Density:	Less Than 450
Warranty:	10 Year Wear Guarantee
Recycled Content:	Lextron Essentials has 10% pre-consumer recycled content.
Environmental Information:	CRI Green Label Plus™ Certified
Construction:	Dynamics-Servo Loop Scroll Tip Shear
Gauge:	1/10th
Pile Weight:	36 oz
Finished Pile Weight	72 oz
Finished Pile Height	High .25", Med .1875", Low .0625"



### Additional Information

Carpet should be installed in accordance with the Carpet and Rug Institute's standard CRI-104. Carpet must be over manufacturer's recommended pad.

- Pattern streaks and banding are visually apparent streaking in patterned carpet resulting from linear juxtaposition of pattern elements visible in both length and width direction. IT IS NOT A CARPET DEFECT, but is inherent in solution dyed graphic and cut/loop patterns.
- All Specifications subject to normal manufacturing tolerance.

# MICROCOOL SCHEME

## GUEST ROOM



- Product Type: Guest Room
- Style Number: Microcool 00132 (ELT V998)
- Color Number: 168
- Specs: 32 oz., 12' Width



# MICROCOOL SCHEME

## GUEST ROOM



Product Type:	Microtel Guest Room
Style Name:	00132 Microcool
Color:	168
Machine Type:	Element
Pattern Repeat:	24" x 24"
Radiant Panel:	Class 1
Smoke Density:	Less Than 450
Warranty:	10 Year Wear Guarantee
Recycled Content:	Lextron Essentials has 10% pre-consumer recycled content.
Environmental Information:	CRI Green Label Plus™ Certified
Construction:	Element-Enhanced Loop Tip Shear
Gauge:	1/10th
Pile Weight:	32 oz
Finished Pile Weight	68 oz
Finished Pile Height	High .25", Med .1875", Low .0625"



### Additional Information

Carpet should be installed in accordance with the Carpet and Rug Institute's standard CRI-104. Carpet must be over manufacturer's recommended pad.

- Pattern streaks and banding are visually apparent streaking in patterned carpet resulting from linear juxtaposition of pattern elements visible in both length and width direction. IT IS NOT A CARPET DEFECT, but is inherent in solution dyed graphic and cut/loop patterns.
- All Specifications subject to normal manufacturing tolerance.

# MICROFRESH SCHEME

CORRIDOR



- Product Type: Corridor
- Style Number: Microfresh 00136 (DYN W094)
- Color Number: 155
- Specs: 36 oz., 12' Width



# MICROFRESH SCHEME

## CORRIDOR



Product Type:	Microtel Corridor
Style Name:	00136 Microfresh
Color:	155
Machine Type:	Dynamics
Pattern Repeat:	24" x 72"
Radiant Panel:	Class 1
Smoke Density:	Less Than 450
Warranty:	10 Year Wear Guarantee
Recycled Content:	Lextron Essentials has 10% pre-consumer recycled content.
Environmental Information:	CRI Green Label Plus™ Certified
Construction:	Dynamics-Servo Loop Scroll Tip Shear
Gauge:	1/10th
Pile Weight:	36 oz
Finished Pile Weight	72 oz
Finished Pile Height	High .25", Med .1875", Low .0625"



### Additional Information

Carpet should be installed in accordance with the Carpet and Rug Institute's standard CRI-104. Carpet must be over manufacturer's recommended pad.

- Pattern streaks and banding are visually apparent streaking in patterned carpet resulting from linear juxtaposition of pattern elements visible in both length and width direction. IT IS NOT A CARPET DEFECT, but is inherent in solution dyed graphic and cut/loop patterns.
- All Specifications subject to normal manufacturing tolerance.

# MICROFRESH SCHEME

## GUEST ROOM



- Product Type: Guest Room
- Style Number: Microfresh 00132 (ELT V999)
- Color Number: 155
- Specs: 32 oz., 12' Width

 **Tarkett** Hospitality

# MICROFRESH SCHEME

## GUEST ROOM



Product Type:	Microtel Guest Room
Style Name:	00132 Microfresh
Color:	155
Machine Type:	Element
Pattern Repeat:	24" x 24"
Radiant Panel:	Class 1
Smoke Density:	Less Than 450
Warranty:	10 Year Wear Guarantee
Recycled Content:	Lextron Essentials has 10% pre-consumer recycled content.
Environmental Information:	CRI Green Label Plus™ Certified
Construction:	Element-Enhanced Loop Tip Shear
Gauge:	1/10th
Pile Weight:	32 oz
Finished Pile Weight	68 oz
Finished Pile Height	High .25", Med .1875", Low .0625"

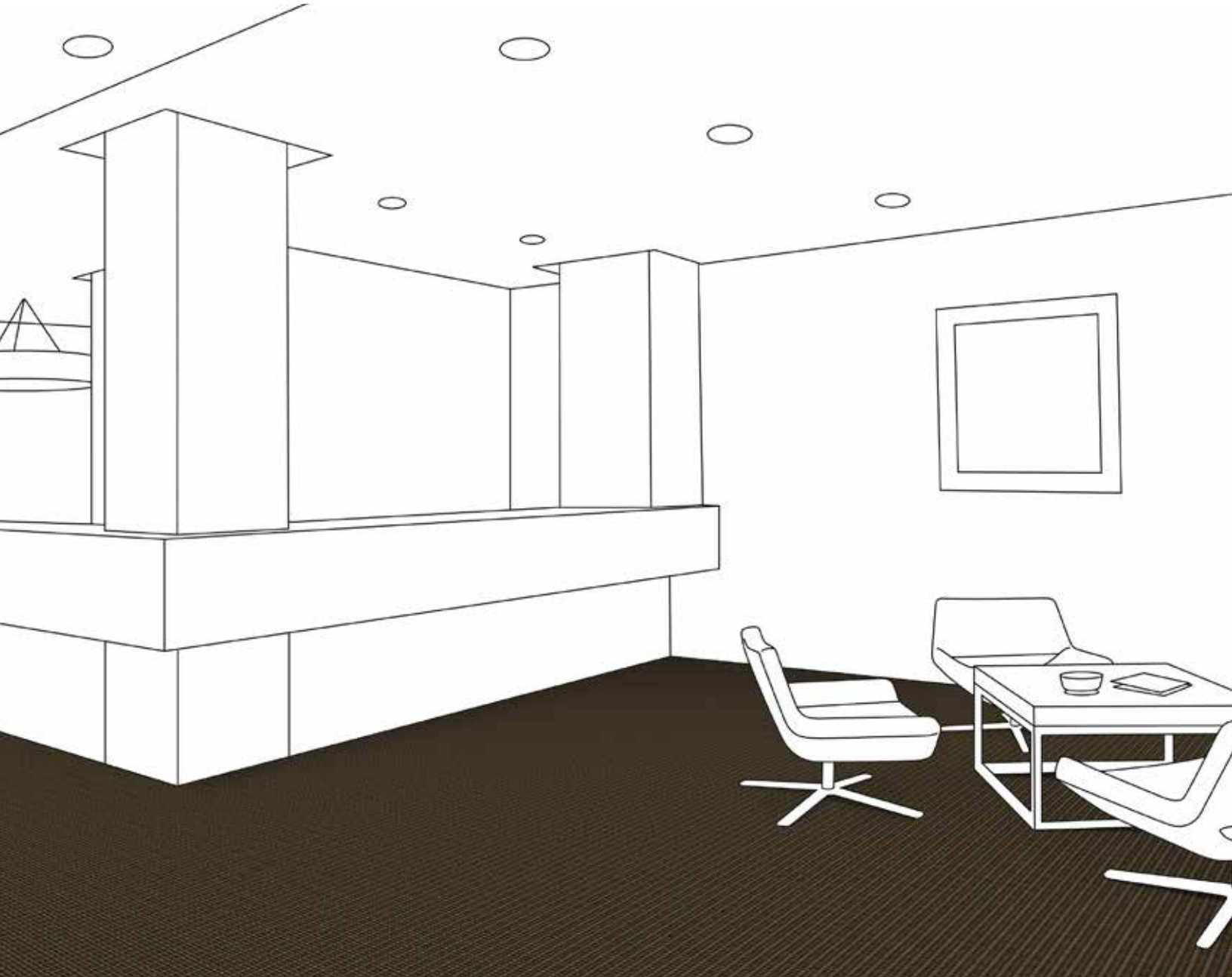


### Additional Information

Carpet should be installed in accordance with the Carpet and Rug Institute's standard CRI-104. Carpet must be over manufacturer's recommended pad.

- Pattern streaks and banding are visually apparent streaking in patterned carpet resulting from linear juxtaposition of pattern elements visible in both length and width direction. IT IS NOT A CARPET DEFECT, but is inherent in solution dyed graphic and cut/loop patterns.
- All Specifications subject to normal manufacturing tolerance.

# BACK OF HOUSE



- Product Type: Back of House
- Style Number: 002326
- Color Number: 296
- Specs: 36 oz., 12' Width





# BACK OF HOUSE



Product Type:	Microtel Back of House
Style Name:	00232
Color:	296
Machine Type:	Element
Pattern Repeat:	2" x 1"
Radiant Panel:	Class 1
Smoke Density:	Less Than 450
Warranty:	10 Year Wear Guarantee
Recycled Content:	Lextron Essentials has 10% pre-consumer recycled content.
Static Control:	Below 3.5 KV
Environmental Information:	CRI Green Label Plus™ Certified
Construction:	Element-Enhanced Loop Tip Shear
Gauge:	1/10th
Tufted Pile Weight:	32 oz
Finished Pile Weight:	68 oz
Finished Pile Height:	High .25", Med .1875", Low .0625"



## Additional Information

Carpet should be installed in accordance with the Carpet and Rug Institute's standard CRI-104. Carpet must be over manufacturer's recommended pad.

- Pattern streaks and banding are visually apparent streaking in patterned carpet resulting from linear juxtaposition of pattern elements visible in both length and width direction. IT IS NOT A CARPET DEFECT, but is inherent in solution dyed graphic and cut/loop patterns.
- All Specifications subject to normal manufacturing tolerance.

# MEETING ROOM



- Product Type: Meeting Room
- Style Number: 00236 (903 Enchant)
- Color Number: 530
- Specs: 36 oz., 15' Width



# MEETING ROOM



Product Type:	Microtel Meeting Room
Style Name:	00236 (903 Enchant)
Color:	530
Machine Type:	Dynamics
Pattern Repeat:	90" x 90"
Radiant Panel:	Class 1
Smoke Density:	Less Than 450
Warranty:	10 Year Wear Guarantee
Recycled Content:	Lextron Essentials has 10% pre-consumer recycled content.
Environmental Information:	CRI Green Label Plus™ Certified
Construction:	Dynamics-Servo Loop Scroll Tip Shear
Gauge:	1/10th
Tufted Pile Weight:	36 oz
Finished Pile Weight:	72 oz
Finished Pile Height:	High .25", Med .1875", Low .0625"



## Additional Information

Carpet should be installed in accordance with the Carpet and Rug Institute's standard CRI-104. Carpet must be over manufacturer's recommended pad.

- Pattern streaks and banding are visually apparent streaking in patterned carpet resulting from linear juxtaposition of pattern elements visible in both length and width direction. IT IS NOT A CARPET DEFECT, but is inherent in solution dyed graphic and cut/loop patterns.
- All Specifications subject to normal manufacturing tolerance.