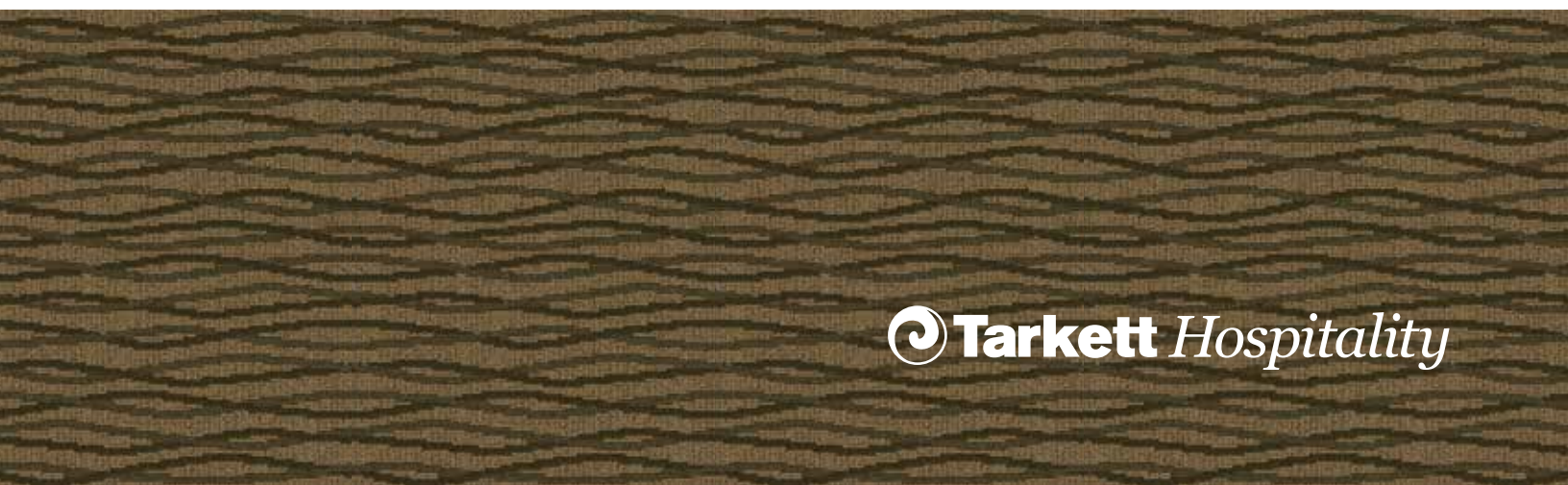


CHOICE HOTELS

Comfort Inn, Truly Yours



CHOICE HOTELS

Comfort Inn, Truly Yours



Manufacturer: Tarkett
Address: 285 Kraft Drive
Dalton, GA 30721
Phone: 706.277.3000
Contact: Jackie Passaro
Jackie.Passaro@tarkett.com
Contact: Ian Fruchtman
ian@scottjordaninc.com
Web: www.tarketthospitality.com

Choose Tarkett

+ Approved Styles
+ Lowest Pricing
+ Fast Delivery

+ 10-Year Warranty
+ Broadloom Carpet
+ Lextron Solution-Dyed Nylon



- Product Type: Guest Room, Back of House, Stairs
- Style Number: I0132 (NW DYN U667)
- Color Number: 194
- Specs: 32 oz. - 12' W
- Pattern Repeat: 24" x 24"



- Product Type: Corridor
- Style Number: I0336 (LX 1636 10144)
- Color Number: 394
- Specs: 36 oz. - 12' W
- Pattern Repeat: 36" x 36"



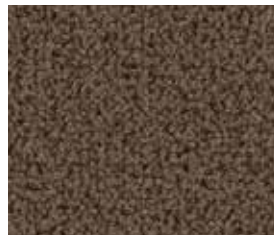
- Product Type: Corridor/Lobby
- Style Number: I0236 (NW DYN U884)
- Color Number: 194
- Specs: 36 oz. - 12' W
- Pattern Repeat: 24" x 30"



- Product Type: Meeting Room
- Style Number: I0436 (LX 1636 9274B)
- Color Number: 394
- Specs: 36 oz. - 12' W
- Pattern Repeat: 24" x 24"



- Product Type: Meeting Room
- Style Number: I0136 (NW DYN U671)
- Color Number: 194
- Specs: 36 oz. - 12' W
- Pattern Repeat: 24" x 26"



- Product Type: Cove Base
- Style Number: 738S
- Color Number: 7509
- Specs: 4"

For use with 10136



- Product Type: Cove Base
- Style Number: 738S
- Color Number: 7506
- Specs: 4"

For use with 10136, 10236, and 10436



- Product Type: LVT
- Style Number: RRW
- Color: Windsor Walnut
- Specs: 7.5" x 48"

TRULY YOURS

GUEST ROOM, BACK OF HOUSE, STAIRS



- Product Type: Guest Room, Back of House, Stairs
- Style Number: I0132 (NW DYN U667)
- Color Number: 194
- Specs: 32 oz. - 12' W
- Pattern Repeat: 24" x 24"

 **Tarkett** Hospitality

TRULY YOURS

GUEST ROOM, BACK OF HOUSE, STAIRS



Manufacturer: Tarkett
Address: 285 Kraft Drive
Dalton, GA 30721
Phone: 706.277.3000
Contact: Jackie Passaro
Jackie.Passaro@tarkett.com
Contact: Ian Fruchtman
ian@scottjordaninc.com
Web: www.tarkett.com

Description: Carpet @ Guest Room,
Back of House, Stairs
Style Number: I0132 (NW DYN U667)
Color: 194
Width: 12'
Repeat: 24"W x 24"L
Type: DYN Loop Tip-Sheared
Content: Lextron Enviro-Green SD Nylon
Weight: 32 oz. tufted face weight
Primary Backing: Woven Polypropylene
Secondary Backing: Action Bac
Pile Height: .250" High, .187" Med, .062" Low
Gauge: 1/10"
Stitches Per Sq Inch: 10
Dye Method: Solution Dyed
Installation Method: Broadloom
Flame Requirements: Meets or exceeds
requirement Class 1



Instructions:

- Installer to provide all materials and equipment for complete installation, seaming diagrams, and full carpet layouts for all areas per manufacturer's recommendation.
- All quantities to be verified by installer.
- All materials and methods of construction must comply with all local fire and life safety codes for use in hotels and other public spaces, and Choice Brand Standards.

No printed material contained here-in may be reproduced without written permission of Tarkett Hospitality. Due to variations in monitors, printers and light sources, we cannot guarantee that the colors in this image will be an exact match to your colors. 285 Kraft Drive Dalton, GA 30721

TRULY YOURS

CORRIDOR/LOBBY



- Product Type: Corridor/Lobby
- Style Number: I0236 (NW DYN U884)
- Color Number: 194
- Specs: 36 oz. - 12' W
- Pattern Repeat: 24" x 30"

 **Tarkett** Hospitality

TRULY YOURS

CORRIDOR/LOBBY



Manufacturer: Tarkett
Address: 285 Kraft Drive
Dalton, GA 30721
Phone: 706.277.3000
Contact: Jackie Passaro
Jackie.Passaro@tarkett.com
Contact: Ian Fruchtman
ian@scottjordaninc.com
Web: www.tarkett.com

Description: Carpet @ Corridor/Lobby
Style Number: I0236 (NW DYN U884)
Color: 194
Width: 12'
Repeat: 24"W x 30"L
Type: DYN Loop Tip-Sheared
Content: Lextron Enviro-Green SD Nylon
Weight: 36 oz. tufted face weight
Primary Backing: Woven Polypropylene
Secondary Backing: Action Bac
Pile Height: .250" High, .187" Med., .062" Low
Gauge: 1/10"
Stitches Per Sq Inch: 12
Dye Method: Solution Dyed
Installation Method: Broadloom
Flame Requirements: Meets or exceeds
requirement Class 1



Instructions:

- Installer to provide all materials and equipment for complete installation, seaming diagrams, and full carpet layouts for all areas per manufacturer's recommendation.
- All quantities to be verified by installer.
- All materials and methods of construction must comply with all local fire and life safety codes for use in hotels and other public spaces, and Choice Brand Standards.

No printed material contained here-in may be reproduced without written permission of Tarkett Hospitality. Due to variations in monitors, printers and light sources, we cannot guarantee that the colors in this image will be an exact match to your colors. 285 Kraft Drive Dalton, GA 30721

TRULY YOURS

MEETING ROOM



- Product Type: Meeting Room
- Style Number: 10136 (NW DYN U671)
- Color Number: 194
- Specs: 36 oz. - 12' W
- Pattern Repeat: 24" x 26"

 **Tarkett** Hospitality

TRULY YOURS

MEETING ROOM



Manufacturer: Tarkett
Address: 285 Kraft Drive
Dalton, GA 30721
Phone: 706.277.3000
Contact: Jackie Passaro
Jackie.Passaro@tarkett.com
Contact: Ian Fruchtman
ian@scottjordaninc.com
Web: www.tarkett.com

Description: Carpet @ Meeting Room
Style Number: I0136 (NW DYN U671)
Color: 194
Width: 12'
Repeat: 24"W x 26"L
Type: DYN Loop Tip-Sheared
Content: Lextron Enviro-Green SD Nylon
Weight: 36 oz. tufted face weight
Primary Backing: Woven Polypropylene
Secondary Backing: Action Bac
Pile Height: .250" High, .187" Med, .062" Low
Gauge: 1/10"
Stitches Per Sq Inch: 12
Dye Method: Solution Dyed
Installation Method: Broadloom
Flame Requirements: Meets or exceeds
requirement Class 1



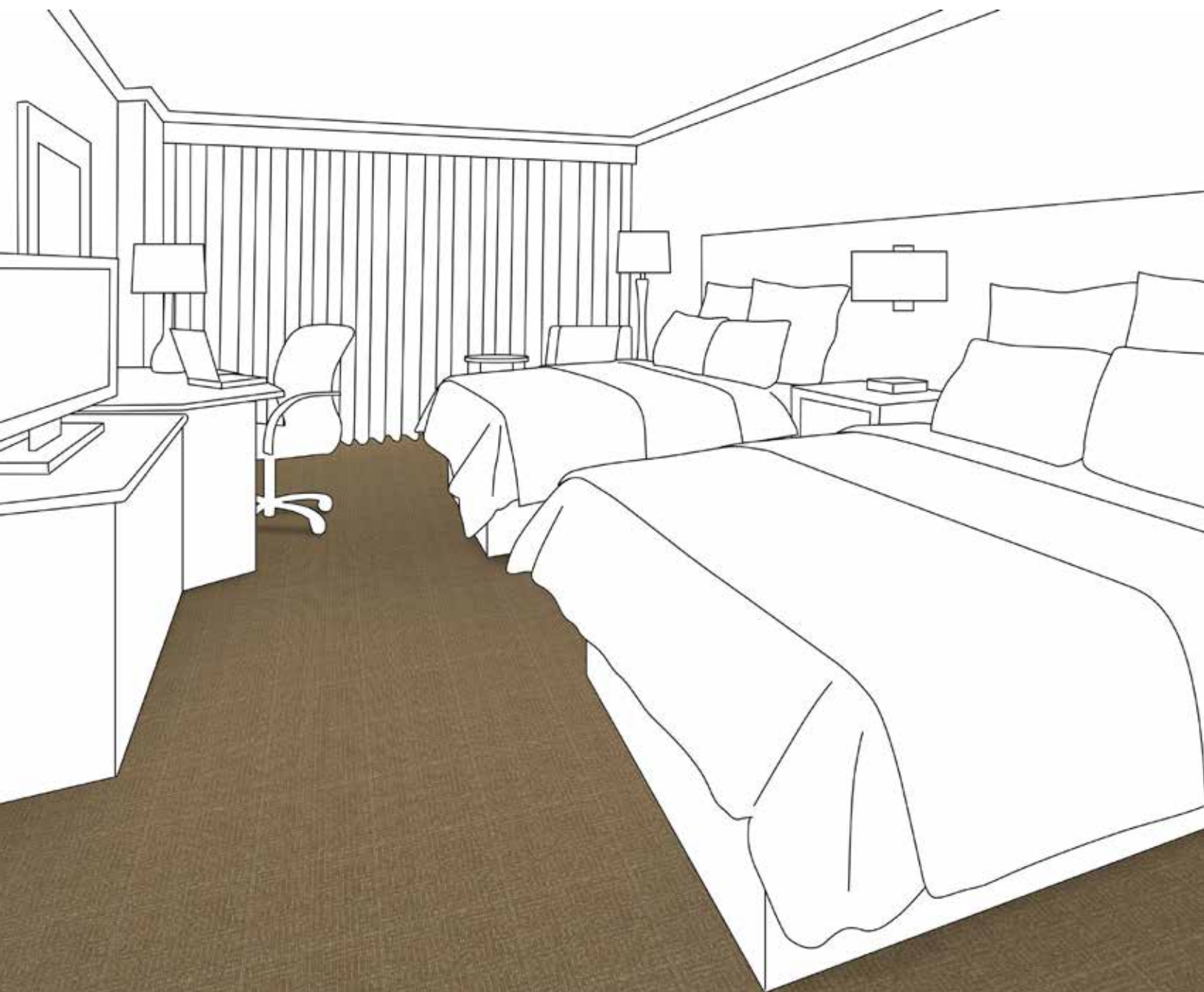
Instructions:

- Installer to provide all materials and equipment for complete installation, seaming diagrams, and full carpet layouts for all areas per manufacturer's recommendation.
- All quantities to be verified by installer.
- All materials and methods of construction must comply with all local fire and life safety codes for use in hotels and other public spaces, and Choice Brand Standards.

No printed material contained here-in may be reproduced without written permission of Tarkett Hospitality. Due to variations in monitors, printers and light sources, we cannot guarantee that the colors in this image will be an exact match to your colors. 285 Kraft Drive Dalton, GA 30721

TRULY YOURS

GUEST ROOM, BACK OF HOUSE, STAIRS



- Product Type: Guest Room,
Back of House, Stairs
- Style Number: I0232 (LX 1632 1221)
- Color Number: 294
- Specs: 32 oz. - 12' W
- Pattern Repeat: 12" x 12"

 **Tarkett** Hospitality

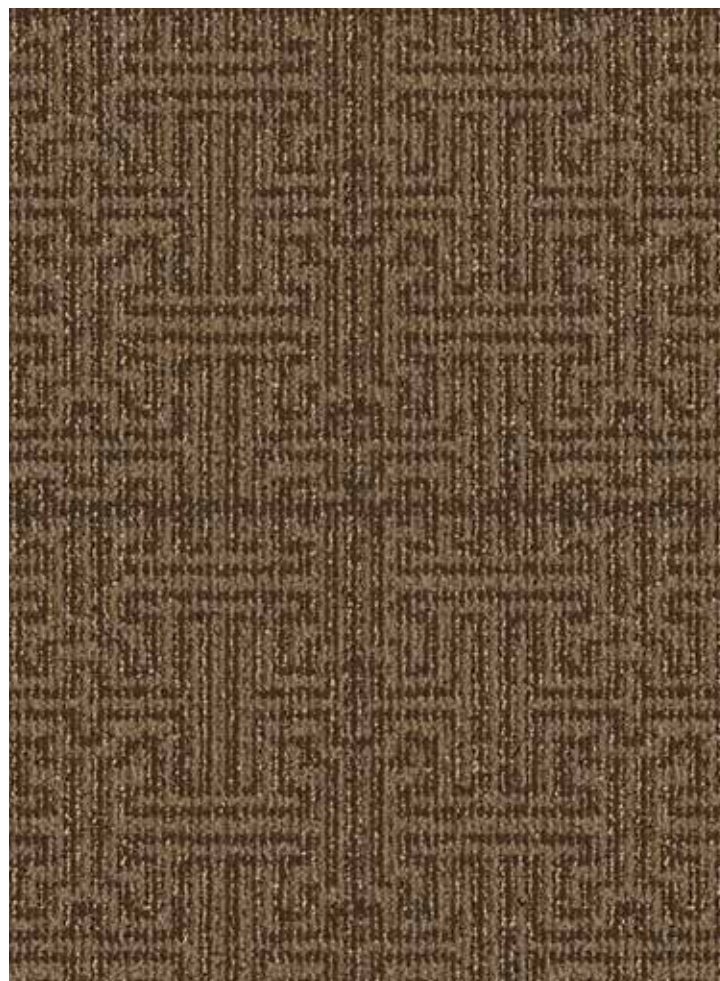
TRULY YOURS

GUEST ROOM, BACK OF HOUSE, STAIRS



Manufacturer: Tarkett
Address: 285 Kraft Drive
Dalton, GA 30721
Phone: 706.277.3000
Contact: Jackie Passaro
Jackie.Passaro@tarkett.com
Contact: Ian Fruchtman
ian@scottjordaninc.com
Web: www.tarkett.com

Description: Carpet @ Guest Room,
Back of House, Stairs
Style Number: I0232 (LX 1632 1221)
Color: 294
Width: 12'
Repeat: 12"W x 12"L
Type: DYN Loop Tip-Sheared
Content: Lextron Enviro-Green SD Nylon
Weight: 32 oz. tufted face weight
Primary Backing: Woven Polypropylene
Secondary Backing: Action Bac
Pile Height: .250" High, .187" Med, .062" Low
Gauge: 1/10"
Stitches Per Sq Inch: 10
Dye Method: Solution Dyed
Installation Method: Broadloom
Flame Requirements: Meets or exceeds
requirement Class 1



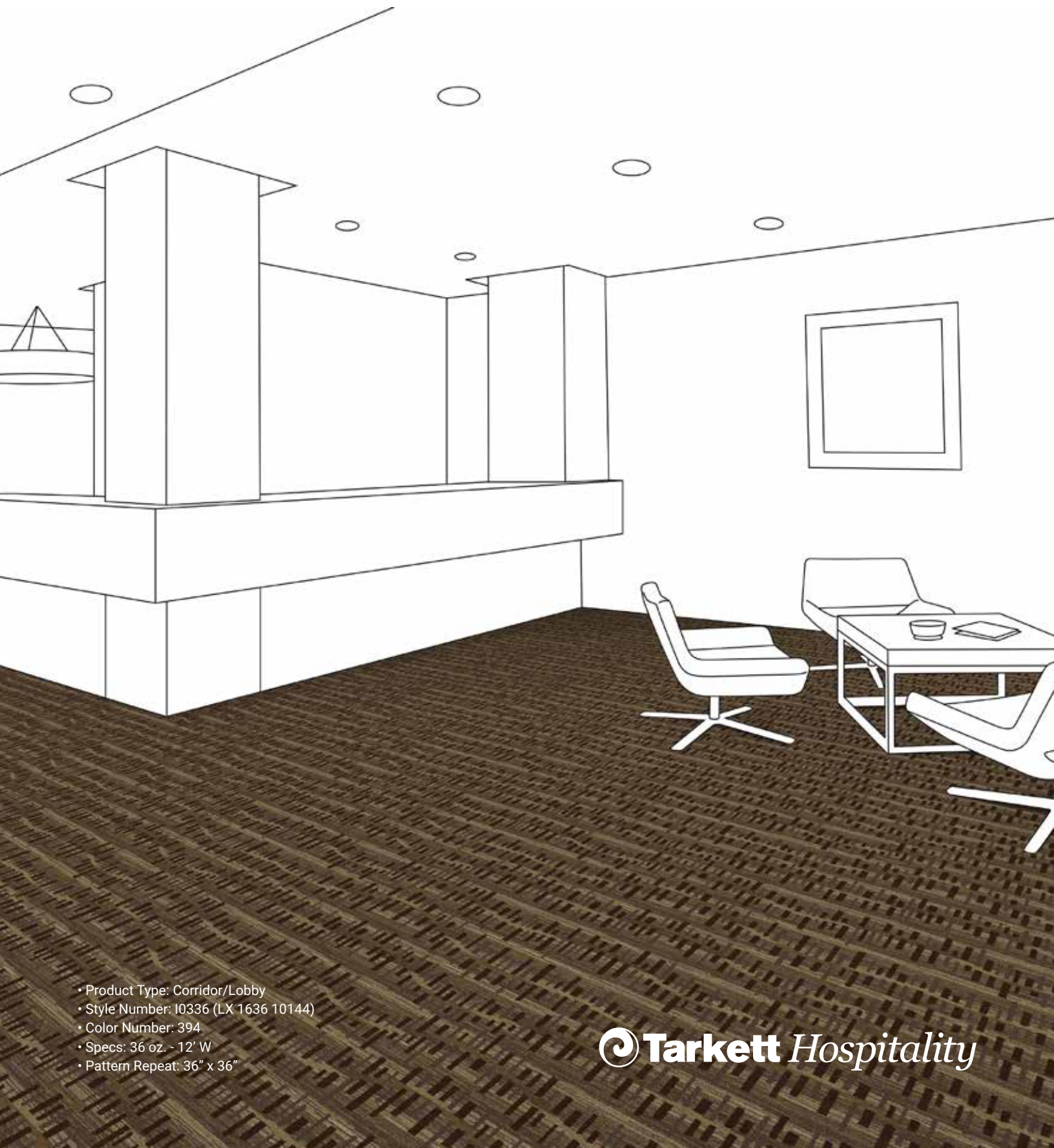
Instructions:

- Installer to provide all materials and equipment for complete installation, seaming diagrams, and full carpet layouts for all areas per manufacturer's recommendation.
- All quantities to be verified by installer.
- All materials and methods of construction must comply with all local fire and life safety codes for use in hotels and other public spaces, and Choice Brand Standards.

No printed material contained here-in may be reproduced without written permission of Tarkett Hospitality. Due to variations in monitors, printers and light sources, we cannot guarantee that the colors in this image will be an exact match to your colors. 285 Kraft Drive Dalton, GA 30721

TRULY YOURS

CORRIDOR/LOBBY



- Product Type: Corridor/Lobby
- Style Number: 10336 (LX 1636 10144)
- Color Number: 394
- Specs: 36 oz. - 12' W
- Pattern Repeat: 36" x 36"

 **Tarkett** Hospitality

TRULY YOURS

CORRIDOR/LOBBY



Manufacturer: Tarkett
Address: 285 Kraft Drive
Dalton, GA 30721
Phone: 706.277.3000
Contact: Jackie Passaro
Jackie.Passaro@tarkett.com
Contact: Ian Fruchtman
ian@scottjordaninc.com
Web: www.tarkett.com

Description: Carpet @ Corridor/Lobby
Style Number: I0336 (LX 1636 10144)
Color: 394
Width: 12'
Repeat: 36"W x 36"L
Type: DYN Loop Tip-Sheared
Content: Lextron Enviro-Green SD Nylon
Weight: 36 oz. tufted face weight
Primary Backing: Woven Polypropylene
Secondary Backing: Action Bac
Pile Height: .250" High, .187" Med, .062" Low
Gauge: 1/10"
Stitches Per Sq Inch: 12
Dye Method: Solution Dyed
Installation Method: Broadloom
Flame Requirements: Meets or exceeds
requirement Class 1



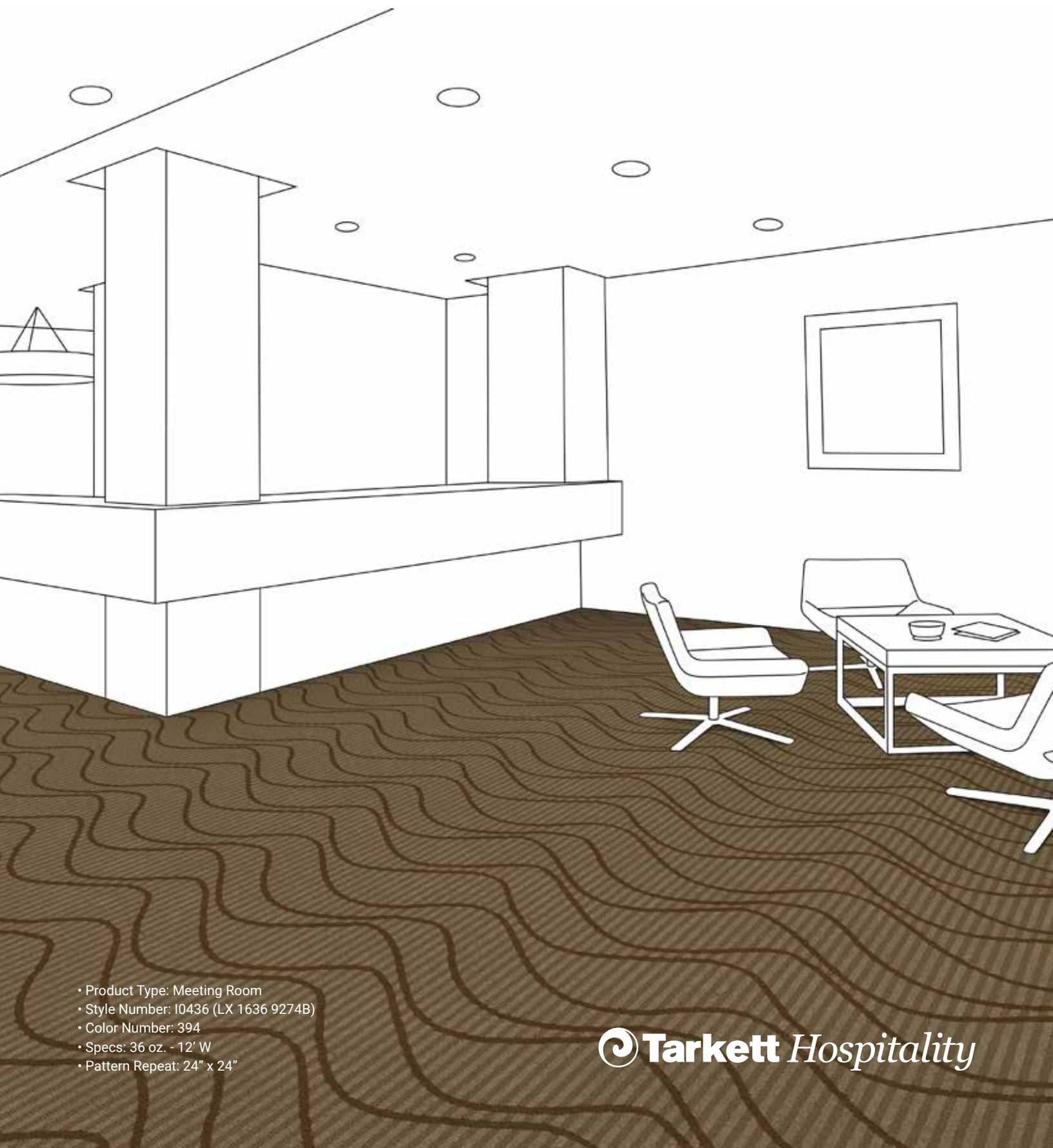
Instructions:

- Installer to provide all materials and equipment for complete installation, seaming diagrams, and full carpet layouts for all areas per manufacturer's recommendation.
- All quantities to be verified by installer.
- All materials and methods of construction must comply with all local fire and life safety codes for use in hotels and other public spaces, and Choice Brand Standards.

No printed material contained here-in may be reproduced without written permission of Tarkett Hospitality. Due to variations in monitors, printers and light sources, we cannot guarantee that the colors in this image will be an exact match to your colors. 285 Kraft Drive Dalton, GA 30721

TRULY YOURS

MEETING ROOM



- Product Type: Meeting Room
- Style Number: 10436 (LX 1636 9274B)
- Color Number: 394
- Specs: 36 oz. - 12' W
- Pattern Repeat: 24" x 24"

 **Tarkett** Hospitality

TRULY YOURS

MEETING ROOM



Manufacturer: Tarkett
Address: 285 Kraft Drive
Dalton, GA 30721
Phone: 706.277.3000
Contact: Jackie Passaro
Jackie.Passaro@tarkett.com
Contact: Ian Fruchtman
ian@scottjordaninc.com
Web: www.tarkett.com

Description: Carpet @ Meeting Room
Style Number: I0436 (LX 1636 9274B)
Color: 394
Width: 12'
Repeat: 24"W x 24"L
Type: DYN Loop Tip-Sheared
Content: Lextron Enviro-Green SD Nylon
Weight: 36 oz. tufted face weight
Primary Backing: Woven Polypropylene
Secondary Backing: Action Bac
Pile Height: .250" High, .187" Med, .062" Low
Gauge: 1/10"
Stitches Per Sq Inch: 12
Dye Method: Solution Dyed
Installation Method: Broadloom
Flame Requirements: Meets or exceeds
requirement Class 1



Instructions:

- Installer to provide all materials and equipment for complete installation, seaming diagrams, and full carpet layouts for all areas per manufacturer's recommendation.
- All quantities to be verified by installer.
- All materials and methods of construction must comply with all local fire and life safety codes for use in hotels and other public spaces, and Choice Brand Standards.

No printed material contained here-in may be reproduced without written permission of Tarkett Hospitality. Due to variations in monitors, printers and light sources, we cannot guarantee that the colors in this image will be an exact match to your colors. 285 Kraft Drive Dalton, GA 30721

TRULY YOURS

LVT



Manufacturer: Tarkett
Address: 285 Kraft Drive
Dalton, GA 30721
Phone: 706.277.3000
Contact: Jackie Passaro
Jackie.Passaro@tarkett.com
Contact: Ian Fruchtman
ian@scottjordaninc.com
Web: www.tarkett.com

	Standard	Tarkett Value
Classification	ASTM F1700	Class III, Type B (Solid Vinyl Floor)
Surface treatment		Urethane (Low Gloss)
Total thickness	ASTM F386	0.100 " (2.49 mm)
Wear layer thickness	ASTM F410	20 mil (0.51 mm)
Installation method		Glue-Down
Pattern		Resolve Wood
Pattern type		Modern Wood
Format Type		Plank
Flexibility	ASTM F137	Pass
Chemical Resistance	ASTM F925	Passes
Static Load Limit	ASTM F970	250 psi, $\leq 0.005"$
Heat stability	ASTM F1514	$\Delta E \leq 8.0$
Light Stability	ASTM F1515	$\Delta E \leq 8.0$
Slip resistance	ASTM D2047	SCOF ≥ 0.5
Squareness	ASTM F2055	Pass
Flammability	ASTM E648	Class 1 (≥ 0.45 W/cm ²)
Smoke Density	ASTM E662	< 450
Residual indentation	ASTM F1914	Pass
Commercial warranty		10-year limited

