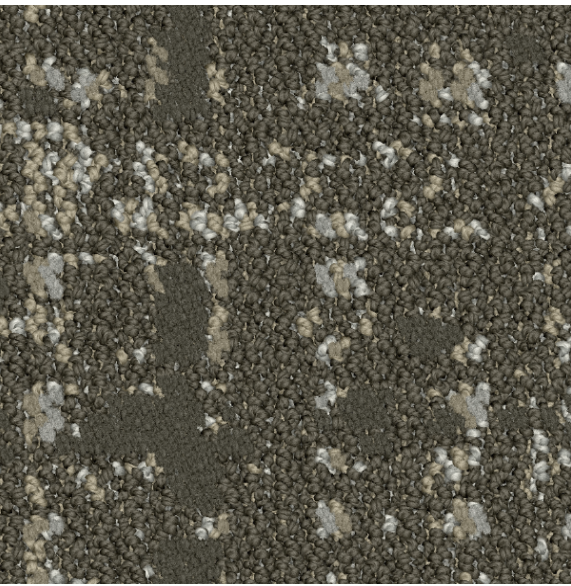


CHOICE HOTELS
Quality

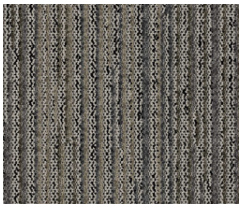
Tarkett Hospitality



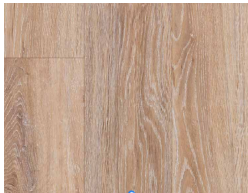
CHOICE HOTELS

Quality

Manufacturer:	Tarkett Hospitality	+ Approved Styles
Address:	285 Kraft Drive	+ Lowest Pricing
	Dalton, GA 30721	+ Fast Delivery
Phone:	301.974.224949	+ 10-Year Warranty
Contact:	Elle Pechiney	+ Broadloom Carpet
	Elle.Pechiney@tarkett.com	+ Lextron Solution-Dyed Nylon
Web:	www.tarketthospitality.com	



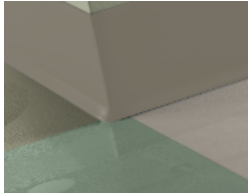
Product Type: Carpet TilZ
Guestroom
Choice Item: CPTB-001
Style Number: Q239T
Color Number: 829
Specs: 21 oz.
Carpet Tile Size: 924" x 24" Tile



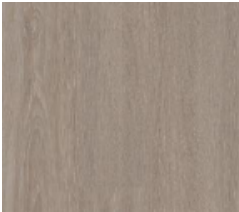
Product Type: LVT
Guestroom - All Schemes
Choice Item: LVT-001
Accore
Style Number: 0017
Color: Limed Oak
Specs: 7" W x 48"L Plank



Product Type: Carpet Broadloom
Guestroom
Choice Item: CP-0%&#
Style Number/F ' %(' '
Color Number: ' . .
Specs: (' oz.
EViiZg:GZeZVi: 9% L x +- # .A



Product Type: Resilient Wall Base
All Areas
Item: RB-001
Traditional Rubber Wall Base with Toe
Style Number: DC-281
Color: 281 Grizzly
Specs: 4" H x 1/8"Thick x 120' L



Product Type: LVT
Guestroom - All Schemes
Choice Item: LVT-001
iD Latitude™
Style Number: PLWD
Color: 3606 Chamois Oak
Specs: 6" x 48" Plank



Product Type: LVT
Guestroom - All Schemes
Choice Item: LVT-001
iD Latitude™
Style Number: PLWD
Color: 3401 Black Walnut
Specs: 6" x 48" Plank



Product Type: LVT
Guestroom - All Schemes
Choice Item: LVT-001
iD Latitude™
Style Number: PLWD
Color: 5136 Acadia Pine
Specs: 6" x 48" Plank

CHOICE HOTELS

Quality

Carpet Tile / Guestroom

Manufacturer: Tarkett Hospitality
Address: 285 Kraft Drive
Dalton, GA 30721
Phone: 301.974.2249
Contact: Elle Pechiney
Elle.Pechiney@tarkett.com
Web: www.tarketthospitality.com

Description:	Guestroom
Choice Item:	CPTB-001
Style Number:	Q239T
Color:	829
Carpet Tile Size:	24" x 24"
Type:	Dynamics Tile Multi-Level Pattern Cut/Loop
Content:	Lextron Enviro-Green Nylon
Weight:	21 oz. tufted face weight
Primary Backing:	Woven Polypropylene
Secondary Backing: Pile	Ethos® Modular w/Omnicoat Technology
Height:	0.219"
Gauge:	1/10"
Dye Method:	Solution Dyed
Installation Method:	Glue-Down
Flame Requirements:	Meets or exceeds requirement Class 1

24" X 24" RANDOM CUT TILE



Additional Information:

- Carpet should be installed in accordance with the Carpet and Rug Institute's standard CRI-104/CRI-105.
- Pattern streaks and banding are visually apparent streaking in patterned carpet resulting from linear juxtaposition of pattern elements visible in both length and width direction. IT IS NOT A CARPET DEFECT, but is inherent in solution dyed graphic and cut/loop patterns.
- All Specifications subject to normal manufacturing tolerance.

CHOICE HOTELS

Quality Broadloom / Guestroom

Manufacturer: Tarkett Hospitality
Address: 285 Kraft Drive
Dalton, GA 30721
Phone: 301.974.2249
Contact: Elle Pechiney
Elle.Pechiney@tarkett.com
Web: www.tarketthospitality.com

Description: Guestroom
Choice Item: CPT-001.3
Style Number: Q2032 Broadloom
Color: 299
Width: 15'
Construction: Dynamics - Servo-Scroll Loop Tip Shear
Fiber: 100% Lextron Enviro-Green Solution Dyed Nylon
Tufted Pile Weight: 32 oz. Per Square Yard
Primary Backing: Woven Polypropylene
Secondary Backing: Action Bac
Pile Height: .250" High, .187" Med,, .062" Low
Gauge: 1/10"
Dye Method: Solution Dyed
Flame Requirements: Meets or exceeds requirement Class 1

Additional Information:

- Carpet should be installed in accordance with the Carpet and Rug Institute's standard CRI-104/CRI-105.
- Pattern streaks and banding are visually apparent streaking in patterned carpet resulting from linear juxtaposition of pattern elements visible in both length and width direction. IT IS NOT A CARPET DEFECT, but is inherent in solution dyed graphic and cut/loop patterns.
- All Specifications subject to normal manufacturing tolerance.



CHOICE HOTELS

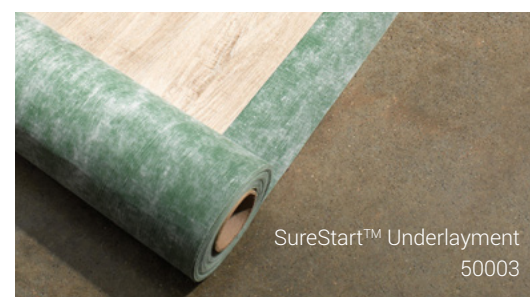
Quality
LVT / Guestroom

Manufacturer: Tarkett Hospitality
Address: 285 Kraft Drive
Dalton, GA 30721
Phone: 301.974.2249
Contact: Elle Pechiney
Elle.Pechiney@tarkett.com
Web: www.tarketthospitality.com

	Standard	Tarkett Value
Choice Item:	LVT-001	RF-01
Classification:	ASTM 1700	Class III, Type B (Solid Vinyl Floor)
Surface Treatment:		Techtonic®
Size:		6" x 48"
Total Thickness:	ASTM F386	0.120" (3.05 mm)
Wear Layer Thickness:	ASTM F410	20 mil (0.51mm)
Installation Method:		Glue-Down
Pattern:		iD Latitude™
Pattern Type:		Wood
Color:		3606 Chamois Oak
Format Type:		Plank
Flexibility:	ASTM F137	Pass
Chemical Resistance:	ASTM F925	Passes
Static Load Limit:	ASTM F970	250 psi, $\leq 0.005"$
Heat Stability:	ASTM F1514	$\Delta E \leq 8.0$
Light Stability:	ASTM F1515	$\Delta E \leq 8.0$
Slip resistance:	ASTM D2047	SCOF ≥ 0.5
Squareness:	ASTM F2055	Pass
Flammability:	ASTM E648	Class 1 ($\geq 0.45 \text{ W/cm}^2$)
Residual Indentation:	ASTM F1914	Pass
Commercial Warranty:		20-year limited

SureStart™ Underlayment 50003

Product Type	Subflooring
Length	33.30 ft (10.1 m), 44.40 ft (13.5 m)
Total thickness	0.060" (1.5 mm)
Width	3 ft, 4.50 ft
Commercial Warranty	10 year limited light commercial



CHOICE HOTELS

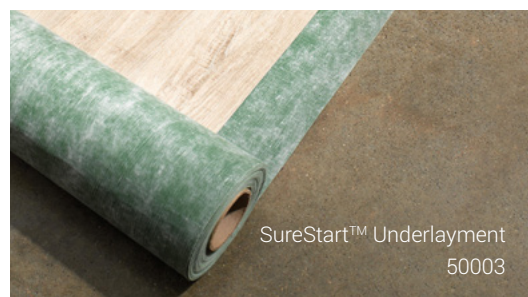
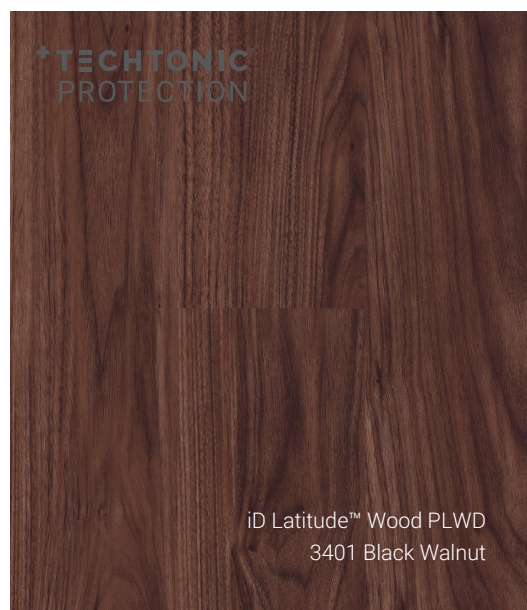
Quality
LVT / Guestroom

Manufacturer: Tarkett Hospitality
Address: 285 Kraft Drive
Dalton, GA 30721
Phone: 301.974.2249
Contact: Elle Pechiney
Elle.Pechiney@tarkett.com
Web: www.tarketthospitality.com

	Standard	Tarkett Value
Choice Item:	LVT-001	RF-01
Classification:	ASTM 1700	Class III, Type B (Solid Vinyl Floor)
Surface Treatment:		Techtonic®
Size:		6" x 48"
Total Thickness:	ASTM F386	0.120" (3.05 mm)
Wear Layer Thickness:	ASTM F410	20 mil (0.51mm)
Installation Method:		Glue-Down
Pattern:		iD Latitude™
Pattern Type:		Wood
Color:		3401 Black Walnut
Format Type:		Plank
Flexibility:	ASTM F137	Pass
Chemical Resistance:	ASTM F925	Passes
Static Load Limit:	ASTM F970	250 psi, $\leq 0.005"$
Heat Stability:	ASTM F1514	$\Delta E \leq 8.0$
Light Stability:	ASTM F1515	$\Delta E \leq 8.0$
Slip resistance:	ASTM D2047	SCOF ≥ 0.5
Squareness:	ASTM F2055	Pass
Flammability:	ASTM E648	Class 1 (≥ 0.45 W/cm ²)
Residual Indentation:	ASTM F1914	Pass
Commercial Warranty:		20-year limited

SureStart™ Underlayment 50003

Product Type	Subflooring
Length	33.30 ft (10.1 m), 44.40 ft (13.5 m)
Total thickness	0.060" (1.5 mm)
Width	3 ft, 4.50 ft
Commercial Warranty	10 year limited light commercial



CHOICE HOTELS

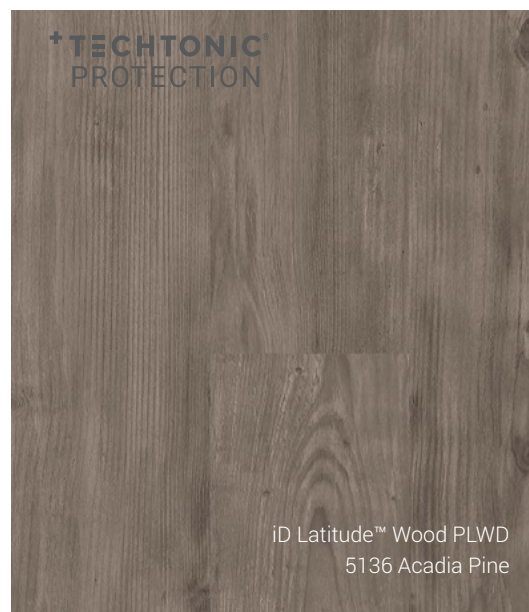
Quality LVT / Guestroom

Manufacturer: Tarkett Hospitality
Address: 285 Kraft Drive
Dalton, GA 30721
Phone: 301.974.2249
Contact: Elle Pechiney
Elle.Pechiney@tarkett.com
Web: www.tarketthospitality.com

	Standard	Tarkett Value
Choice Item:	LVT-001	RF-01
Classification:	ASTM 1700	Class III, Type B (Solid Vinyl Floor)
Surface Treatment:		Techtonic®
Size:		6" x 48"
Total Thickness:	ASTM F386	0.120" (3.05 mm)
Wear Layer Thickness:	ASTM F410	20 mil (0.51mm)
Installation Method:		Glue-Down
Pattern:		iD Latitude™
Pattern Type:		Wood
Color:		5136 Acadia Pine
Format Type:		Plank
Flexibility:	ASTM F137	Pass
Chemical Resistance:	ASTM F925	Passes
Static Load Limit:	ASTM F970	250 psi, $\leq 0.005"$
Heat Stability:	ASTM F1514	$\Delta E \leq 8.0$
Light Stability:	ASTM F1515	$\Delta E \leq 8.0$
Slip resistance:	ASTM D2047	SCOF ≥ 0.5
Squareness:	ASTM F2055	Pass
Flammability:	ASTM E648	Class 1 ($\geq 0.45 \text{ W/cm}^2$)
Residual Indentation:	ASTM F1914	Pass
Commercial Warranty:		20-year limited

SureStart™ Underlayment 50003

Product Type	Subflooring
Length	33.30 ft (10.1 m), 44.40 ft (13.5 m)
Total thickness	0.060" (1.5 mm)
Width	3 ft, 4.50 ft
Commercial Warranty	10 year limited light commercial



CHOICE HOTELS

Quality LVT / Guestroom

Manufacturer: Tarkett Hospitality
Address: 285 Kraft Drive
Dalton, GA 30721

Phone: 301.974.2249
Contact: Elle Pechiney
Elle.Pechiney@tarkett.com

Web: www.tarketthospitality.com

Choice Item: **Tarkett Value**
Classification: LVT-001
Class III, Type B
(Solid Vinyl Floor)

Total Thickness	5 mm	
SPC Core	4 mm	
Acoustical Backing Layer	1 mm IXPE	
Wear Layer Thickness	20 mil	
Edge Treatment	Micro-Bevel	
Material	Phthalate Free, 100% Virgin Material	
Reusable Content	100% Reclaimable	
Plank Size	7' x 48"	7' x 60"
Sq. Ft. Per Carton	23.64 sq. ft.	23.62sq. ft.
Planks Per Carton	10	8
Cartons Per Pallet	55	55
Lbs. Per Carton	38 lbs.	38 lbs.
ASTM F2199 (Dimensional Stability)	Passes	
ASTM F1914 (Residual Indentation)	Passes (PSI Equivalent > 5,000 lbs.)	
ASTM F1514 (Heat Stability)	Passes	
ASTM F1515 (Light Stability)	Passes	
ASTM E2179 (Impact Sound Reductions)	Δ IIC \geq 20 dB	
IIC Impact Sound Reduction Rating	IIC 68	
ASTM F925 (Resistance to Chemicals)	Passes	
ASTM D5116 (VOC Requirements)	Passes < 0.1 mg/m ³	
Scratch/Scuff/Abrasion Properties	Excellent	
Installation System	Click, Drop Lock System	
Certification	FloorScore® and Assure™ Certification	
Residential Warranty	Lifetime	
Light Commercial Warranty	15-Year	
3-Seasons Warranty	10-Year	



7" x 48"

NOTE: 7" X 60" MUST BE QUOTED AS RUNNING LINE, NOT PROGRAM

CHOICE HOTELS

Quality
Public Space

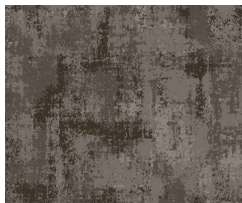
Manufacturer: Tarkett Hospitality
Address: 285 Kraft Drive
Dalton, GA 30721
Phone: 301.974.224949
Contact: Elle Pechiney
Elle.Pechiney@tarkett.com
Web: www.tarketthospitality.com

+ Approved Styles
+ Lowest Pricing
+ Fast Delivery
+ 10-Year Warranty
+ Broadloom Carpet
+ Lextron Solution-Dyed Nylon

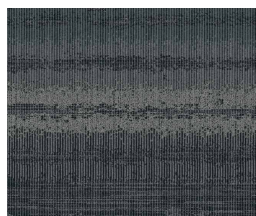


Product Type: Carpet Pad
All Public Space Areas
Choice Item: CPAD-001
Style Number: PDS28
Model : Performance D.S. 28oz.
Specs: 28 oz.

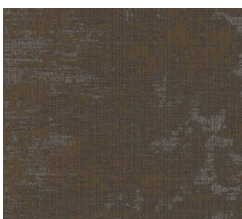
Product Type: Carpet Tile
Scheme: Elevated
Public Space: Lobby
Choice Item: CPT-002.3



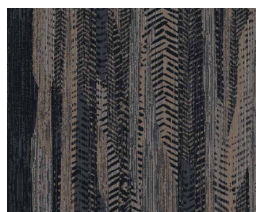
Product Type: Carpet Broadloom
Scheme: Classic
Public Space: Meeting Room
Choice Item: CPT-002.1
Style Number/Paradigm IV
Color Number: 530
Specs: 42 oz.
EVI Zg: GZeZVi: 9% L x 91.4 A



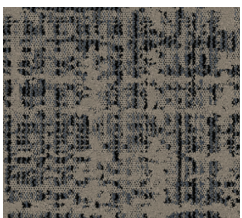
Product Type: Carpet Broadloom
Scheme: Select
Public Space: Meeting Room Choice
Item: CPT-005.2
Style Number: Alchemy III
Color: 260
Specs: 36oz.
Pattern Repeat: 48" W x 90"L



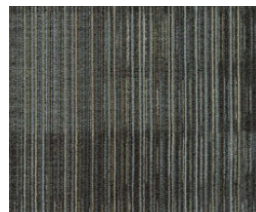
Product Type: Carpet Broadloom
Scheme: Classic
Public Space: Corridor, Elevator Lobby
Choice Item: CPT-003.1
Style Number: Alchemy I
Color: 430
Specs: 36oz
Pattern Repeat: 90" W x 180"L



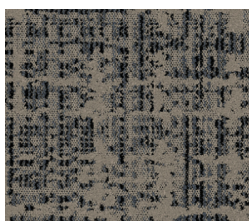
Product Type: Carpet Broadloom
Scheme: Select
Choice Item: CPT-006.2
Public Space: Corridor, Elevator Lobby
Style Number: Luna I
Color Number: 410
Specs: 36 oz.
Pattern Repeat: 90" W x 144"L



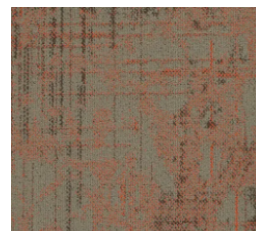
Product Type: Carpet Broadloom
Scheme: Select
Public Space: Front Desk, Lobby
Choice Item: CPT-004.1
Style Number: Saltmarsh II
Color: 590
Specs: 36oz.
Pattern Repeat: 48" W x 60"L



Product Type: Carpet Tile
Scheme: Elevated
Choice Item: CPT-008.3
Public Space: Meeting Room
Style Number: Maelstrom 04849
Color Number: Nature Calls 33209
Specs: 18 oz.
Tile Size: 24" W x 24"L



Product Type: Carpet Broadloom
Scheme: Select
Public Space: Lobby
Choice Item: CPT-002.2
Style Number: Saltmarsh II
Color: 590
Specs: 36oz.
Pattern Repeat: 48" W x 60"L



Product Type: Carpet Tile
Scheme: Elevated
Choice Item: CPT-009.3
Public Space: Corridor, Elevator
Lobby Style Number: Cartography
04843 Color Number: Boundary
15604 Specs: 20 oz.
Tile Size: 24" W x 24"L

CHOICE HOTELS

QUALITY - Classic, Select, Elevated
Public Space - Resilient Wall Base



Manufacturer: Tarkett Hospitality
Address: 285 Kraft Drive
Dalton, GA 30721
Phone: 301.974.2249
Contact: Elle Pechiney
Elle.Pechiney@tarkett.com
Web: tarketthospitality.com



Product Type: Resilient Wall Base
Elevator Lobby, Stairs,
Corridor - Classic, Select
Choice Item: RB-001
Style Number: CB-281
Color Number: 281 Grizzly
Specs: 4" H x 1/8" Thick x 120'L



Product Type: Resilient Wall Base
Fitness Center, Guest Laundry,
Vending - Classic, Select
Choice Item: RB-003
Style Number: CB-VL2
Color: VL2 Whispering Mist
Specs: 4" H x 1/8" Thick x 120'L



Product Type: Resilient Wall Base
Lobby, Meeting Room, Front Desk
Area, Stairs - Classic, Select
Choice Item: RB-002
Style Number: CB-32
Color Number: 32 Pebble
Specs: 4" H x 1/8" Thick x 120'L



Product Type: Resilient Wall Base
Fitness Center - Elevated
Choice Item: RB-002.3FIT
Style Number: MW-VL2-K Ambassador
Color: VL2 Whispering Mist
Specs: 4" H x 3/8" Thick x 8'L



Product Type: Resilient Wall Base
Guest Laundry - Elevated
Choice Item: RB-002.3
Style Number: MW-32-K Ambassador
Color: 32 Pebble
Specs: 4" H x 3/8" Thick x 8'L

CHOICE HOTELS

Quality: Classic
Public Space - Meeting Room

Manufacturer: Tarkett Hospitality
Address: 285 Kraft Drive
Dalton, GA 30721
Phone: 301.974.2249
Contact: Elle Pechiney
Elle.Pechiney@tarkett.com
Web: www.tarketthospitality.com

Description: Broadloom Carpet
Choice Item: CPT-002.3
Style Number: Paradigm IV
Color: 530
Width: 15'
Repeat: 90" W x 91.4"L
Construction: Intrepid - Multi-Color Servo-Scroll Loop Tip Shear
Fiber: 100% Lextron Enviro-Green Solution Dyed Nylon
Tufted Pile Weight: 42 oz. Per Square Yard
Primary Backing: Woven Polypropylene
Secondary Backing: Action Bac
Pile Height: .250" High, .187" Med., .062" Low
Gauge: 1/10"
Dye Method: Solution Dyed
Flame Requirements: Meets or exceeds requirement Class 1

Additional Information:

- Carpet should be installed in accordance with the Carpet and Rug Institute's standard CRI-104/CRI-105.
- Pattern streaks and banding are visually apparent streaking in patterned carpet resulting from linear juxtaposition of pattern elements visible in both length and width direction. IT IS NOT A CARPET DEFECT, but is inherent in solution dyed graphic and cut/loop patterns.
- All Specifications subject to normal manufacturing tolerance.



CHOICE HOTELS

Quality: Classic

Public Space - Corridor, Elevator Lobby

Manufacturer: Tarkett Hospitality
Address: 285 Kraft Drive
Dalton, GA 30721

Phone: 301.974.2249
Contact: Elle Pechiney
Web: Elle.Pechiney@tarkett.com
www.tarketthospitality.com

Description: Broadloom Carpet
Choice Item: CPT-003.1
Style Number: Alchemy I
Color: 430
Width: 15'
Repeat: 90" W x 180"L
Type: Dynamics - Multi Level Loop Servo Scroll Tip Shear
Content: Lextron Enviro-Green Solution Dyed Nylon
Weight: 36 oz. tufted face weight
Primary Backing: Woven Polypropylene
Secondary Backing: Action Bac
Pile Height: .250" High, .187" Med, .062" Low
Gauge: 1/10"
Dye Method: Solution Dyed
Installation Method: Broadloom
Flame Requirements: Meets or exceeds requirement Class 1

Additional Information:

- Due to the manufacturing process of a tip shear product, the finished yarn weight will vary more than normal manufacturing tolerances and side match cannot be guaranteed.
- Carpet should be installed in accordance with the Carpet and Rug Institute's standard CRI-104. Carpet must be over manufacturer's recommended pad.
- Pattern streaks and banding are visually apparent streaking in patterned carpet resulting from linear juxtaposition of pattern elements visible in both length and width direction. IT IS NOT A CARPET DEFECT, but is inherent in solution dyed graphic and cut/loop patterns.
- All Specifications subject to normal manufacturing tolerance.



CHOICE HOTELS

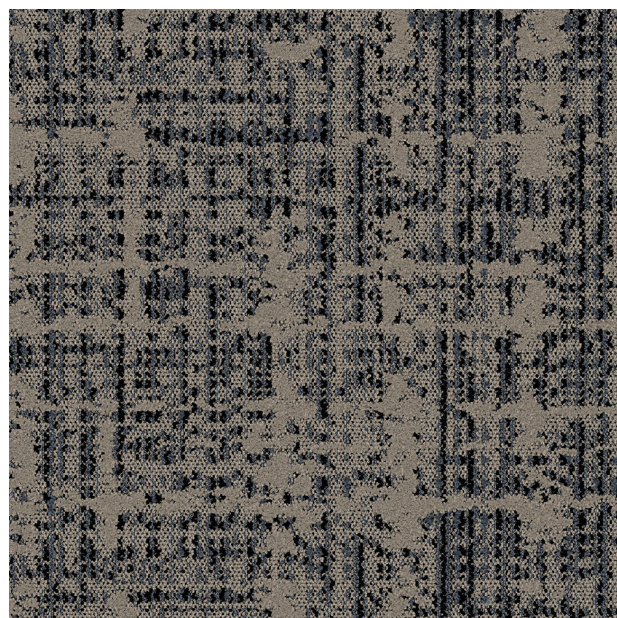
Quality: Select
Public Space - Front Desk, Lobby

Manufacturer: Tarkett Hospitality
Address: 285 Kraft Drive
Dalton, GA 30721
Phone: 301.974.2249
Contact: Elle Pechiney
Elle.Pechiney@tarkett.com
Web: www.tarketthospitality.com

Description: Broadloom Carpet
Choice Item: CPT-004.1/CPT-002.2
Style Number: Saltmarsh II
Color: 590
Width: 12'
Repeat: 48" W x 60" L
Type: Dynamics - Multi Level Loop Servo Scroll Tip Sheer
Content: 100% Lextron Enviro-Green Solution Dyed Nylon
Weight: 36 oz. tufted face weight
Primary Backing: Woven Polypropylene
Secondary Backing: Action Bac
Pile Height: .250" High, .187" Med, .062" Low
Gauge: 1/10"
Dye Method: Solution Dyed
Installation Method: Broadloom
Flame Requirements: Meets or exceeds requirement Class 1

Additional Information:

- Due to the manufacturing process of a tip shear product, the finished yarn weight will vary more than normal manufacturing tolerances and side match cannot be guaranteed.
- Carpet should be installed in accordance with the Carpet and Rug Institute's standard CRI-104. Carpet must be over manufacturer's recommended pad.
- Pattern streaks and banding are visually apparent streaking in patterned carpet resulting from linear juxtaposition of pattern elements visible in both length and width direction. IT IS NOT A CARPET DEFECT, but is inherent in solution dyed graphic and cut/loop patterns.
- All Specifications subject to normal manufacturing tolerance.



CHOICE HOTELS

Quality - Select

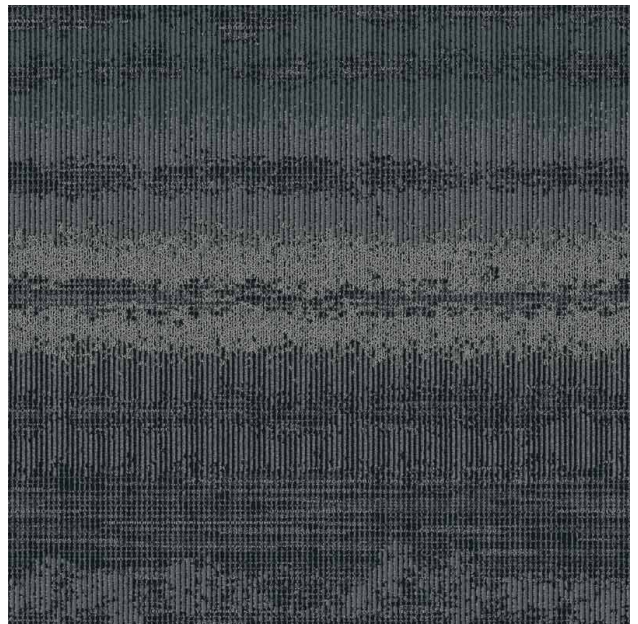
Public Space - Meeting Room

Manufacturer: Tarkett Hospitality
Address: 285 Kraft Drive
Dalton, GA 30721
Phone: 301.974.2249
Contact: Elle Pechiney
Elle.Pechiney@tarkett.com
Web: www.tarketthospitality.com

Description: Broadloom Carpet
Choice Item: CPT-005.2
Style Number: Alchemy III
Color: 260
Width: 15'
Repeat: 48" W x 90"L
Type: Dynamics - Multi Level Loop Servo Scroll Tip Shear
Content: 100% Lextron Enviro-Green Solution Dyed Nylon
Weight: 36 oz. tufted face weight
Primary Backing: Woven Polypropylene
Secondary Backing: Action Bac
Pile Height: .250" High, .187" Med, .062" Low
Gauge: 1/10"
Dye Method: Solution Dyed
Installation Method: Broadloom
Flame Requirements: Meets or exceeds requirement Class 1

Additional Information:

- Due to the manufacturing process of a tip shear product, the finished yarn weight will vary more than normal manufacturing tolerances and side match cannot be guaranteed.
- Carpet should be installed in accordance with the Carpet and Rug Institute's standard CRI-104. Carpet must be over manufacturer's recommended pad.
- Pattern streaks and banding are visually apparent streaking in patterned carpet resulting from linear juxtaposition of pattern elements visible in both length and width direction. IT IS NOT A CARPET DEFECT, but is inherent in solution dyed graphic and cut/loop patterns.
- All Specifications subject to normal manufacturing tolerance.



CHOICE HOTELS

Quality - Select

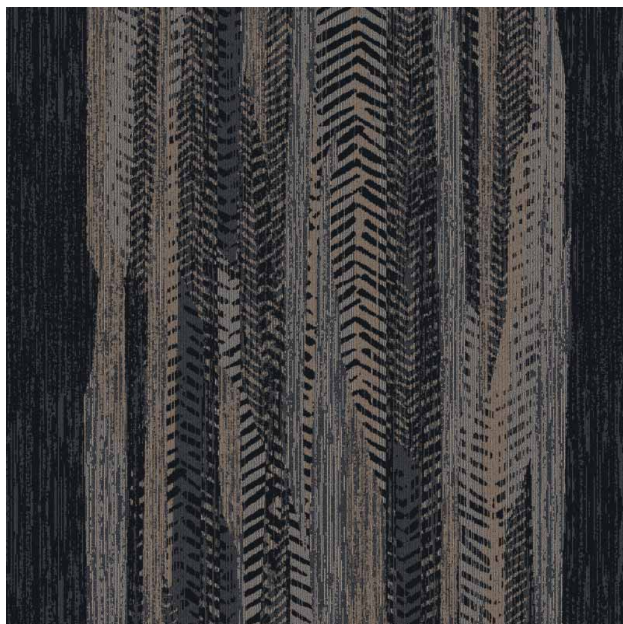
Public Space - Corridor, Elevator Lobby

Manufacturer: Tarkett Hospitality
Address: 285 Kraft Drive
Dalton, GA 30721
Phone: 301.974.2249
Contact: Elle Pechiney
Elle.Pechiney@tarkett.com
Web: www.tarketthospitality.com

Description: Broadloom Carpet
Choice Item: CPT-006.2
Style Number: Luna I
Color: 410
Width: 15'
Repeat: 90" W x 144"L
Type: Dynamics - Multi Level Loop Servo Scroll Tip Shear
Content: 100% Lextron Enviro-Green Solution Dyed Nylon
Weight: 36 oz. tufted face weight
Primary Backing: Woven Polypropylene
Secondary Backing: Action Bac
Pile Height: .250" High, .187" Med, .062" Low
Gauge: 1/10"
Dye Method: Solution Dyed
Installation Method: Broadloom
Flame Requirements: Meets or exceeds requirement Class 1

Additional Information:

- Due to the manufacturing process of a tip shear product, the finished yarn weight will vary more than normal manufacturing tolerances and side match cannot be guaranteed.
- Carpet should be installed in accordance with the Carpet and Rug Institute's standard CRI-104. Carpet must be over manufacturer's recommended pad.
- Pattern streaks and banding are visually apparent streaking in patterned carpet resulting from linear juxtaposition of pattern elements visible in both length and width direction. IT IS NOT A CARPET DEFECT, but is inherent in solution dyed graphic and cut/loop patterns.
- All Specifications subject to normal manufacturing tolerance.



CHOICE HOTELS

Quality - Elevated

Public Space Carpet Tile - Lobby

Manufacturer:	Tarkett Hospitality
Address:	285 Kraft Drive Dalton, GA 30721
Phone:	301.974.2249
Contact:	Elle Pechiney Elle.Pechiney@tarkett.com
Web:	www.tarketthospitality.com

Description:
Choice Item:
Style Number:
Color:
Carpet Tile Size:
Type:
Content:
Weight:
Primary Backing:
Secondary Backing: Pile
Height:
Gauge:
Dye Method: Installation
Method: Flame
Requirements:

Additional Information:

- Carpet should be installed in accordance with the Carpet and Rug Institute's standard CRI-104/CRI-105.
- Pattern streaks and banding are visually apparent streaking in patterned carpet resulting from linear juxtaposition of pattern elements visible in both length and width direction. IT IS NOT A CARPET DEFECT, but is inherent in solution dyed graphic and cut/loop patterns.
- All Specifications subject to normal manufacturing tolerance.

CHOICE HOTELS

Quality - Elevated

Public Space Carpet Tile - Meeting Room

Manufacturer: Tarkett Hospitality
Address: 285 Kraft Drive
Dalton, GA 30721
Phone: 301.974.2249
Contact: Elle Pechiney
Elle.Pechiney@tarkett.com
Web: www.tarketthospitality.com

Description: Carpet Tile
Choice Item: CPT-008.3
Style Number: Maelstrom 04849
Color: Nature Calls 33209
Carpet Tile Size: 24" x 24"
Type: Tufted Patterned Loop
Content: TDX Nylon
Weight: 18 oz. tufted face weight
Primary Backing: Synthetic Non-Woven
Secondary Backing: Pile
Ethos® Modular w/Omnicoat Technology
Height: 0.110" (22.8mm)
Gauge: 1/10"
Dye Method: Installation
Solution Dyed
Method: Flame
Glue-Down
Requirements: Meets or exceeds requirement Class 1



Additional Information:

- Carpet should be installed in accordance with the Carpet and Rug Institute's standard CRI-104/CRI-105.
- Pattern streaks and banding are visually apparent streaking in patterned carpet resulting from linear juxtaposition of pattern elements visible in both length and width direction. IT IS NOT A CARPET DEFECT, but is inherent in solution dyed graphic and cut/loop patterns.
- All Specifications subject to normal manufacturing tolerance.

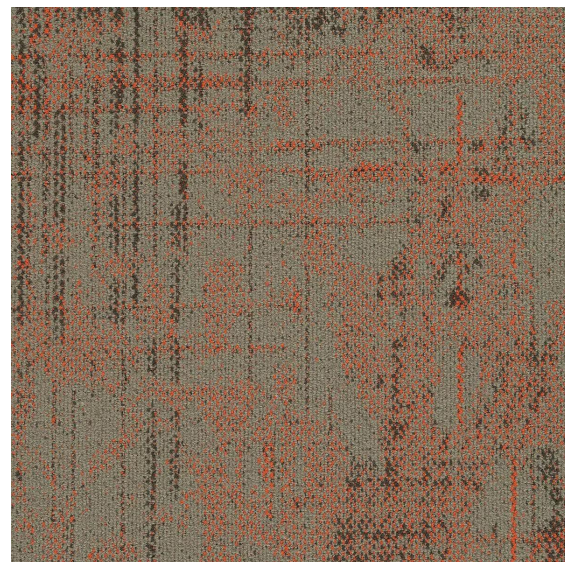
CHOICE HOTELS

Quality - Elevated

Public Space Carpet Tile - Corridor, Elevator Lobby

Manufacturer: Tarkett Hospitality
Address: 285 Kraft Drive
Dalton, GA 30721
Phone: 301.974.2249
Contact: Elle Pechiney
Elle.Pechiney@tarkett.com
Web: www.tarketthospitality.com

Description: Carpet Tile
Choice Item: CPT-009.3
Style Number: Cartography 04843
Color: Boundary 15604
Carpet Tile Size: 9" x 36" or 24" x 24"
Type: Tufted Patterned Loop
Content: TDX Nylon
Weight: 20 oz. tufted face weight
Primary Backing: Synthetic Non-Woven
Secondary Backing: Pile
Height: Ethos® Modular w/Omnicoat Technology
Gauge: 0.110" (22.8mm)
Dye Method: Installation
Method: Flame
Requirements: 1/10"
Solution Dyed
Glue-Down
Meets or exceeds requirement Class 1



Additional Information:

- Carpet should be installed in accordance with the Carpet and Rug Institute's standard CRI-104/CRI-105.
- Pattern streaks and banding are visually apparent streaking in patterned carpet resulting from linear juxtaposition of pattern elements visible in both length and width direction. IT IS NOT A CARPET DEFECT, but is inherent in solution dyed graphic and cut/loop patterns.
- All Specifications subject to normal manufacturing tolerance.

CHOICE HOTELS

Quality
LVT / Guestroom

Manufacturer: Tarkett Hospitality
Address: 285 Kraft Drive
Dalton, GA 30721

Phone: 301.974.2249
Contact: Elle Pechiney
Elle.Pechiney@tarkett.com

Web: www.tarketthospitality.com

Choice Item: **Tarkett Value**
LVT-001
Classification: Class III, Type B
(Solid Vinyl Floor)
7" x 48"

Total Thickness	5 mm	
SPC Core	4 mm	
Acoustical Backing Layer	1 mm IXPE	
Wear Layer Thickness	20 mil	
Edge Treatment	Micro-Bevel	
Material	Phthalate Free, 100% Virgin Material	
Reusable Content	100% Reclaimable	
Plank Size	7" x 48"	7" x 60"
Sq. Ft. Per Carton	23.64 sq. ft.	23.62sq. ft.
Planks Per Carton	10	8
Cartons Per Pallet	55	55
Lbs. Per Carton	38 lbs.	38 lbs.
ASTM F2199 (Dimensional Stability)	Passes	
ASTM F1914 (Residual Indentation)	Passes (PSI Equivalent > 5,000 lbs.)	
ASTM F1514 (Heat Stability)	Passes	
ASTM F1515 (Light Stability)	Passes	
ASTM E2179 (Impact Sound Reductions)	Δ IIC ≥ 20 dB	
IIC Impact Sound Reduction Rating	IIC 68	
ASTM F925 (Resistance to Chemicals)	Passes	
ASTM D5116 (VOC Requirements)	Passes < 0.1 mg/m³	
Scratch/Scuff/Abrasion Properties	Excellent	
Installation System	Click, Drop Lock System	
Certification	FloorScore® and Assure™ Certification	
Residential Warranty	Lifetime	
Light Commercial Warranty	15-Year	
3-Seasons Warranty	10-Year	



Accore Tawny Chevron 0020

Specialty Design



Tarkett Hospitality
285 Kraft Drive
Dalton, GA 30721

301-974-2249
tarketthospitality.com