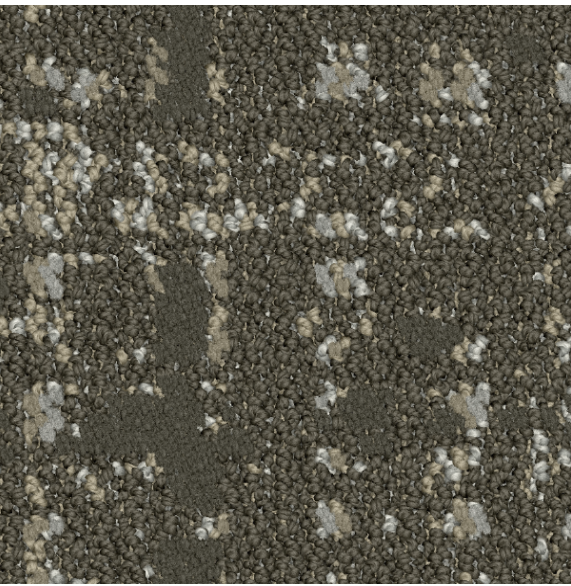


CHOICE HOTELS
Quality

Tarkett Hospitality



CHOICE HOTELS

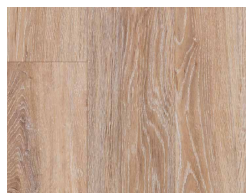
Quality

Manufacturer: Tarkett Hospitality
Address: 285 Kraft Drive
Dalton, GA 30721
Phone: 301.974.224949
Contact: Elle Pechiney
Elle.Pechiney@tarkett.com
Web: www.tarketthospitality.com

- + Approved Styles
- + Lowest Pricing
- + Fast Delivery
- + 10-Year Warranty
- + Broadloom Carpet
- + Lextron Solution-Dyed Nylon



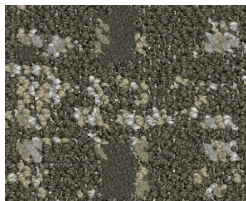
Product Type: Carpet Tile
Guestroom
Choice Item: CPTB-001
Style Number: A0005
Color Number: 42714
Specs: 21 oz.
Carpet Tile Size: 9" x 36" or 24" x 24" Tile



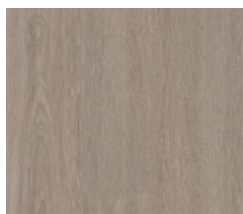
Product Type: LVT
Guestroom - All Schemes
Choice Item: LVT-001
ProGen™
Style Number: 270265015 Vista Oak
Color: Limed Natural
Specs: 7" W x 48"L Plank



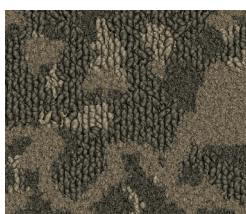
Product Type: Carpet Broadloom
Guestroom
Choice Item: CP-000
Style Number/F' %(''
Color Number: ' . .
Specs: (' oz.
EViiZg: 'GZeZVi: 9% L x +- # .A



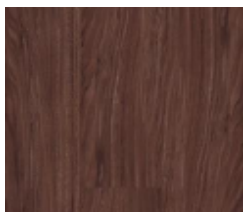
Product Type: Carpet Broadloom
Corridor
Style Number: D110 (Saltmarsh I)
Color Number: 623
Specs: 36 oz.
Pattern Repeat: 90" W x 100"L



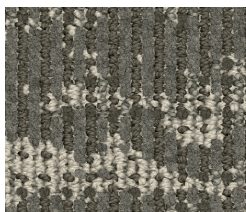
Product Type: LVT
Guestroom - All Schemes
Choice Item: LVT-001
iD Latitude™
Style Number: PLWD
Color: 3606 Chamois Oak
Specs: 6" x 48" Plank



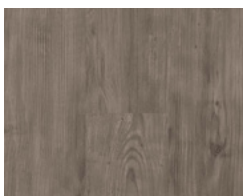
Product Type: Carpet Broadloom
Corridor
Style Number: 102N (Terra III)
Color Number: 424
Specs: 42oz.
Pattern Repeat: 90" W x 90"L



Product Type: LVT
Guestroom - All Schemes
Choice Item: LVT-001
iD Latitude™
Style Number: PLWD
Color: 3401 Black Walnut
Specs: 6" x 48" Plank



Product Type: Carpet Broadloom
Corridor
Style Number: D1438 (Alchemy I)
Color Number: 420
Specs: 36oz.
Pattern Repeat: 90" W x 180"L



Product Type: LVT
Guestroom - All Schemes
Choice Item: LVT-001
iD Latitude™
Style Number: PLWD
Color: 5136 Acadia Pine
Specs: 6" x 48" Plank



Product Type: Resilient Wall Base
All Areas
Item: RB-001
Traditional Rubber Wall Base with Toe
Style Number: DC-281
Color: 281 Grizzly
Specs: 4" H x 1/8" Thick x 120' L

CHOICE HOTELS

Quality

Carpet Tile / Guestroom

Manufacturer: Tarkett Hospitality
Address: 285 Kraft Drive
Dalton, GA 30721
Phone: 301.974.2249
Contact: Elle Pechiney
Elle.Pechiney@tarkett.com
Web: www.tarketthospitality.com



Description:	Guestroom
Choice Item:	CPTB-001
Style Number:	A0005 (Loop Stitch) Carpet Tile
Color:	42714 Woven Cane
Carpet Tile Size:	9" x 36" or 24" x 24"
Type:	Tufted Patterned Loop
Content:	TDX Nylon
Weight:	21 oz. tufted face weight
Primary Backing:	Synthetic Non-Woven
Secondary Backing: Pile	Ethos® Modular w/Omnicoat Technology
Height:	0.110" (22.8mm)
Gauge:	1/10"
Dye Method: Installation	Solution Dyed
Method: Flame	Glue-Down
Requirements:	Meets or exceeds requirement Class 1

Discontinued - New
Design in progress



Additional Information:

- Carpet should be installed in accordance with the Carpet and Rug Institute's standard CRI-104/CRI-105.
- Pattern streaks and banding are visually apparent streaking in patterned carpet resulting from linear juxtaposition of pattern elements visible in both length and width direction. IT IS NOT A CARPET DEFECT, but is inherent in solution dyed graphic and cut/loop patterns.
- All Specifications subject to normal manufacturing tolerance.

CHOICE HOTELS

Quality Broadloom / Guestroom

Manufacturer: Tarkett Hospitality
Address: 285 Kraft Drive
Dalton, GA 30721
Phone: 301.974.2249
Contact: Elle Pechiney
Elle.Pechiney@tarkett.com
Web: www.tarketthospitality.com



Description: Guestroom
Choice Item: CPT-001.3
Style Number: Q2032 Broadloom
Color: 299
Width: 15'
Construction: Dynamics - Servo-Scroll Loop Tip Shear
Fiber: 100% Lextron Enviro-Green Solution Dyed Nylon
Tufted Pile Weight: 32 oz. Per Square Yard
Primary Backing: Woven Polypropylene
Secondary Backing: Action Bac
Pile Height: .250" High, .187" Med., .062" Low
Gauge: 1/10"
Dye Method: Solution Dyed
Flame Requirements: Meets or exceeds requirement Class 1

Additional Information:

- Carpet should be installed in accordance with the Carpet and Rug Institute's standard CRI-104/CRI-105.
- Pattern streaks and banding are visually apparent streaking in patterned carpet resulting from linear juxtaposition of pattern elements visible in both length and width direction. IT IS NOT A CARPET DEFECT, but is inherent in solution dyed graphic and cut/loop patterns.
- All Specifications subject to normal manufacturing tolerance.



CHOICE HOTELS

Quality
LVT / Guestroom

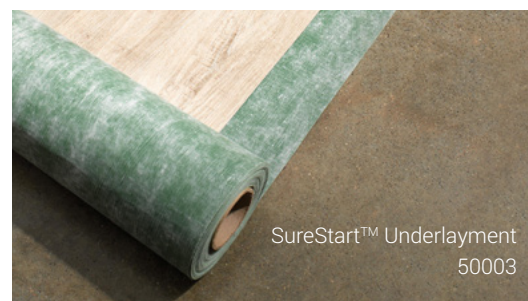
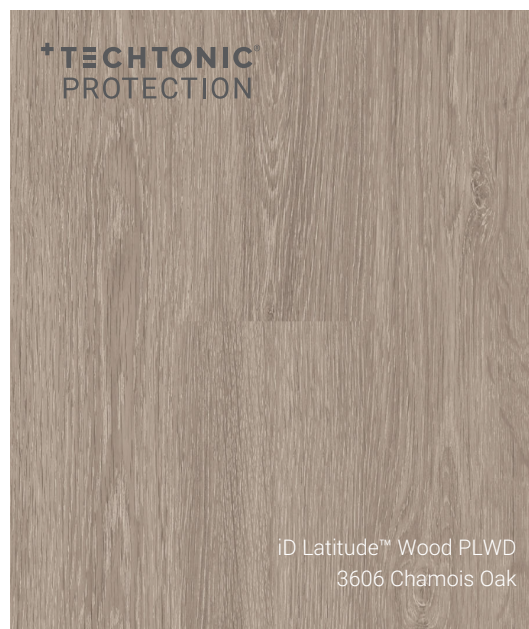
Manufacturer: Tarkett Hospitality
Address: 285 Kraft Drive
Dalton, GA 30721
Phone: 301.974.2249
Contact: Elle Pechiney
Elle.Pechiney@tarkett.com
Web: www.tarketthospitality.com



	Standard	Tarkett Value
Choice Item:	LVT-001	RF-01
Classification:	ASTM 1700	Class III, Type B (Solid Vinyl Floor)
Surface Treatment:		Techtonic®
Size:		6" x 48"
Total Thickness:	ASTM F386	0.120" (3.05 mm)
Wear Layer Thickness:	ASTM F410	20 mil (0.51mm)
Installation Method:		Glue-Down
Pattern:		iD Latitude™
Pattern Type:		Wood
Color:		3606 Chamois Oak
Format Type:		Plank
Flexibility:	ASTM F137	Pass
Chemical Resistance:	ASTM F925	Passes
Static Load Limit:	ASTM F970	250 psi, $\leq 0.005"$
Heat Stability:	ASTM F1514	$\Delta E \leq 8.0$
Light Stability:	ASTM F1515	$\Delta E \leq 8.0$
Slip resistance:	ASTM D2047	SCOF ≥ 0.5
Squareness:	ASTM F2055	Pass
Flammability:	ASTM E648	Class 1 ($\geq 0.45 \text{ W/cm}^2$)
Residual Indentation:	ASTM F1914	Pass
Commercial Warranty:		20-year limited

SureStart™ Underlayment 50003

Product Type	Subflooring
Length	33.30 ft (10.1 m), 44.40 ft (13.5 m)
Total thickness	0.060" (1.5 mm)
Width	3 ft, 4.50 ft
Commercial Warranty	10 year limited light commercial



CHOICE HOTELS

Quality
LVT / Guestroom

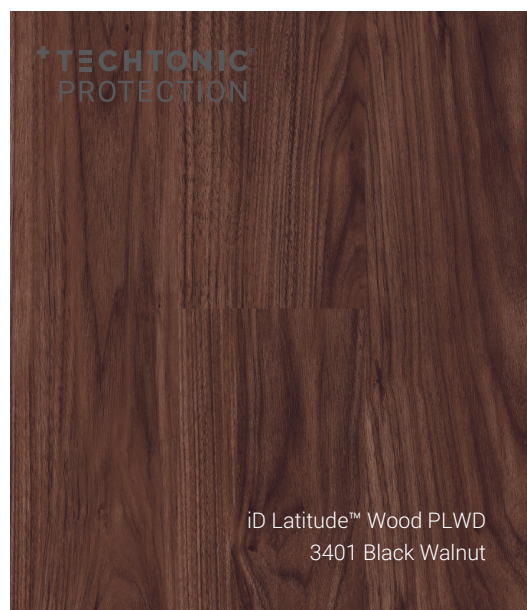
Manufacturer: Tarkett Hospitality
Address: 285 Kraft Drive
Dalton, GA 30721
Phone: 301.974.2249
Contact: Elle Pechiney
Elle.Pechiney@tarkett.com
Web: www.tarketthospitality.com



	Standard	Tarkett Value
Choice Item:	LVT-001	RF-01
Classification:	ASTM 1700	Class III, Type B (Solid Vinyl Floor)
Surface Treatment:		Techtonic®
Size:		6" x 48"
Total Thickness:	ASTM F386	0.120" (3.05 mm)
Wear Layer Thickness:	ASTM F410	20 mil (0.51mm)
Installation Method:		Glue-Down
Pattern:		iD Latitude™
Pattern Type:		Wood
Color:		3401 Black Walnut
Format Type:		Plank
Flexibility:	ASTM F137	Pass
Chemical Resistance:	ASTM F925	Passes
Static Load Limit:	ASTM F970	250 psi, $\leq 0.005"$
Heat Stability:	ASTM F1514	$\Delta E \leq 8.0$
Light Stability:	ASTM F1515	$\Delta E \leq 8.0$
Slip resistance:	ASTM D2047	SCOF ≥ 0.5
Squareness:	ASTM F2055	Pass
Flammability:	ASTM E648	Class 1 ($\geq 0.45 \text{ W/cm}^2$)
Residual Indentation:	ASTM F1914	Pass
Commercial Warranty:		20-year limited

SureStart™ Underlayment 50003

Product Type	Subflooring
Length	33.30 ft (10.1 m), 44.40 ft (13.5 m)
Total thickness	0.060" (1.5 mm)
Width	3 ft, 4.50 ft
Commercial Warranty	10 year limited light commercial



iD Latitude™ Wood PLWD
3401 Black Walnut



SureStart™ Underlayment
50003

CHOICE HOTELS

Quality
LVT / Guestroom

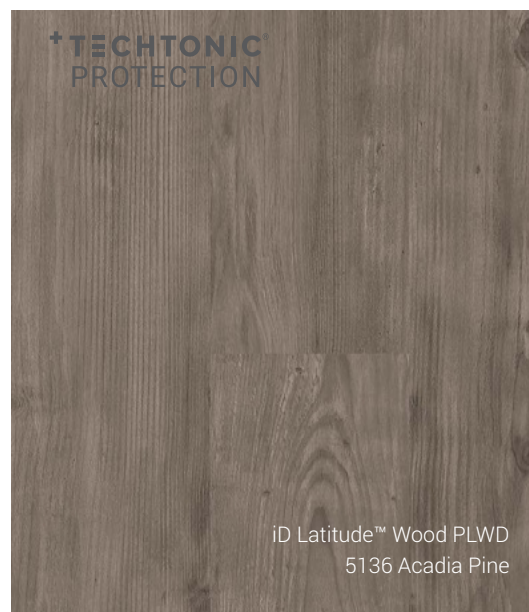
Manufacturer: Tarkett Hospitality
Address: 285 Kraft Drive
Dalton, GA 30721
Phone: 301.974.2249
Contact: Elle Pechiney
Elle.Pechiney@tarkett.com
Web: www.tarketthospitality.com



	Standard	Tarkett Value
Choice Item:	LVT-001	RF-01
Classification:	ASTM 1700	Class III, Type B (Solid Vinyl Floor)
Surface Treatment:		Techtonic®
Size:		6" x 48"
Total Thickness:	ASTM F386	0.120" (3.05 mm)
Wear Layer Thickness:	ASTM F410	20 mil (0.51mm)
Installation Method:		Glue-Down
Pattern:		iD Latitude™
Pattern Type:		Wood
Color:		5136 Acadia Pine
Format Type:		Plank
Flexibility:	ASTM F137	Pass
Chemical Resistance:	ASTM F925	Passes
Static Load Limit:	ASTM F970	250 psi, $\leq 0.005"$
Heat Stability:	ASTM F1514	$\Delta E \leq 8.0$
Light Stability:	ASTM F1515	$\Delta E \leq 8.0$
Slip resistance:	ASTM D2047	SCOF ≥ 0.5
Squareness:	ASTM F2055	Pass
Flammability:	ASTM E648	Class 1 ($\geq 0.45 \text{ W/cm}^2$)
Residual Indentation:	ASTM F1914	Pass
Commercial Warranty:		20-year limited

SureStart™ Underlayment 50003

Product Type	Subflooring
Length	33.30 ft (10.1 m), 44.40 ft (13.5 m)
Total thickness	0.060" (1.5 mm)
Width	3 ft, 4.50 ft
Commercial Warranty	10 year limited light commercial



iD Latitude™ Wood PLWD
5136 Acadia Pine



SureStart™ Underlayment
50003

CHOICE HOTELS

Quality

LVT / Guestroom

Manufacturer: Tarkett Hospitality
Address: 285 Kraft Drive
Dalton, GA 30721

Phone: 301.974.2249
Contact: Elle Pechiney
Elle.Pechiney@tarkett.com

Web: www.tarketthospitality.com



Choice Item:	Tarkett Value LVT-001
Classification:	Class III, Type B (Solid Vinyl Floor)
Size:	7" x 48"
Total Thickness:	0.197" (5 mm)
Wear Layer Thickness:	20 mil (0.51mm)
Accoustical Backing:	0.039" (1mm) IXPE
Installation Method:	Uniclic®
Pattern:	ProGen™
Pattern Type:	Vista Oak
Color:	270265015 Limed Natural
Format Type:	Plank
Edge Treatment:	Microbeveled
Flexibility:	Pass
Chemical Resistance:	Passes
Static Load Limit:	250 psi, $\leq 0.005"$
Heat Stability:	$\Delta E \leq 8.0$
Light Stability:	$\Delta E \leq 8.0$
Slip resistance:	SCOF ≥ 0.5
Squareness:	Pass
Flammability:	Class 1 (≥ 0.45 W/cm ²)
Residual Indentation:	Pass
Impact Sound:	$\Delta IIC \geq 21$ dB
IIC Impact Sound	
Reduction Rating:	68
Commercial Warranty:	15-year limited (Light)



ProGen™
270265015 Vista Oak Limed Natural

CHOICE HOTELS

Quality

Broadloom / Corridor - Opt 1

Manufacturer: Tarkett Hospitality
Address: 285 Kraft Drive
Dalton, GA 30721

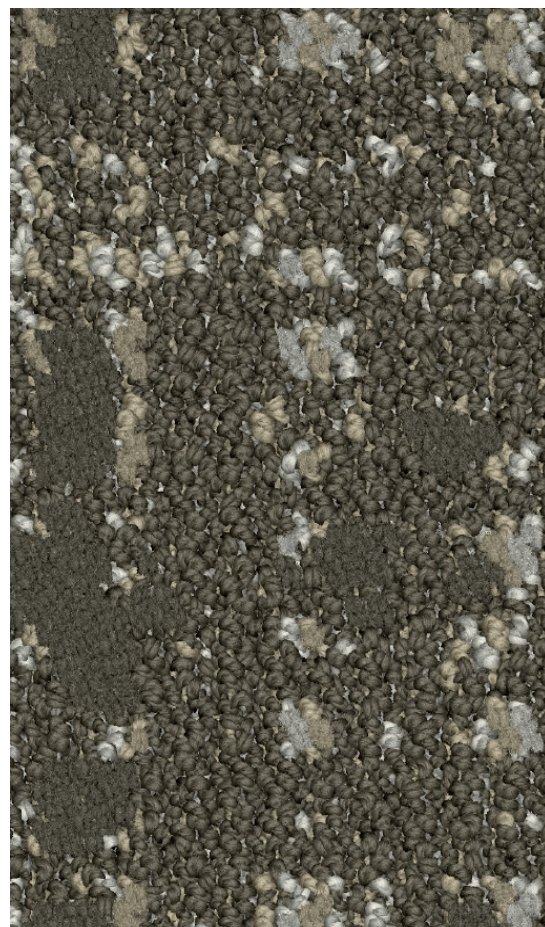
Phone: 301.974.2249
Contact: Elle Pechiney
Elle.Pechiney@tarkett.com
Web: www.tarketthospitality.com



Description: Corridor
Choice Item: Opt 1
Style Number: 110D Broadloom (Saltmarsh I)
Color: 623
Width: 15'
Repeat: 90" W x 100"L
Type: Dynamics - Multi Level Loop Servo Scroll Tip Shear
Content: Lextron Enviro-Green Solution Dyed Nylon
Weight: 36 oz. tufted face weight
Primary Backing: Woven Polypropylene
Secondary Backing: Action Bac
Pile Height: .250" High, .187" Med, .062" Low
Gauge: 1/10"
Dye Method: Solution Dyed
Installation Method: Broadloom
Flame Requirements: Meets or exceeds requirement Class 1

Additional Information:

- Due to the manufacturing process of a tip shear product, the finished yarn weight will vary more than normal manufacturing tolerances and side match cannot be guaranteed.
- Carpet should be installed in accordance with the Carpet and Rug Institute's standard CRI-104. Carpet must be over manufacturer's recommended pad.
- Pattern streaks and banding are visually apparent streaking in patterned carpet resulting from linear juxtaposition of pattern elements visible in both length and width direction. IT IS NOT A CARPET DEFECT, but is inherent in solution dyed graphic and cut/loop patterns.
- All Specifications subject to normal manufacturing tolerance.



CHOICE HOTELS

Quality

Broadloom / Corridor- Opt 2

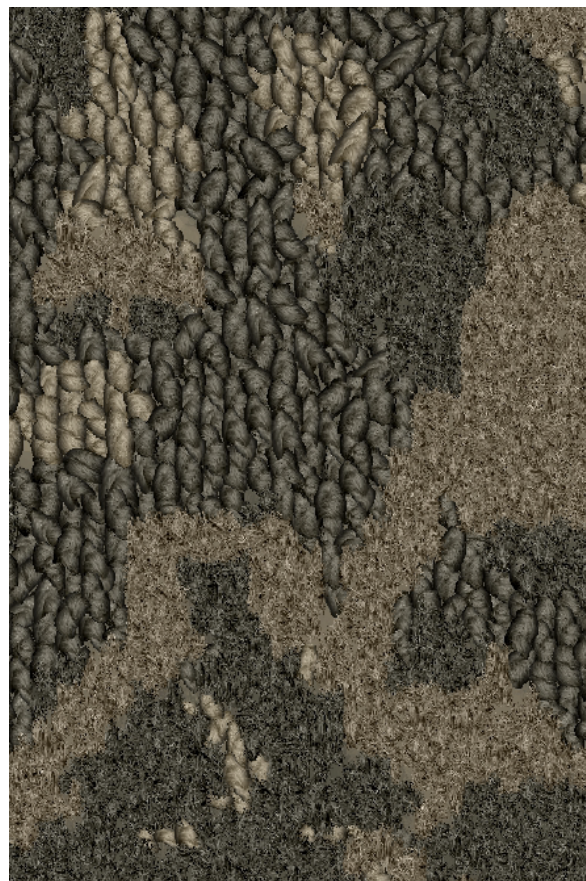
Manufacturer: Tarkett Hospitality
Address: 285 Kraft Drive
Dalton, GA 30721
Phone: 301.974.2249
Contact: Elle Pechiney
Elle.Pechiney@tarkett.com
Web: www.tarketthospitality.com



Description: Corridor
Choice Item: Opt 2
Style Number: 102N Broadloom (Terra III)
Color: 424
Width: 15'
Repeat: 90"W x 90"L
Type: Intrepid - Multi Level Loop Servo Scroll Tip Shear
Content: 100% Lextron Enviro-Green Solution Dyed Nylon
Weight: 42 oz. tufted face weight
Primary Backing: Woven Polypropylene
Secondary Backing: Action Bac
Pile Height: .250" High, .187" Med, .062" Low
Gauge: 1/10"
Dye Method: Solution Dyed
Installation Method: Broadloom
Flame Requirements: Meets or exceeds requirement Class 1

Additional Information:

- Due to the manufacturing process of a tip shear product, the finished yarn weight will vary more than normal manufacturing tolerances and side match cannot be guaranteed.
- Carpet should be installed in accordance with the Carpet and Rug Institute's standard CRI-104. Carpet must be over manufacturer's recommended pad.
- Pattern streaks and banding are visually apparent streaking in patterned carpet resulting from linear juxtaposition of pattern elements visible in both length and width direction. IT IS NOT A CARPET DEFECT, but is inherent in solution dyed graphic and cut/loop patterns.
- All Specifications subject to normal manufacturing tolerance.



CHOICE HOTELS

Quality

Broadloom/ Corridor - Opt 3

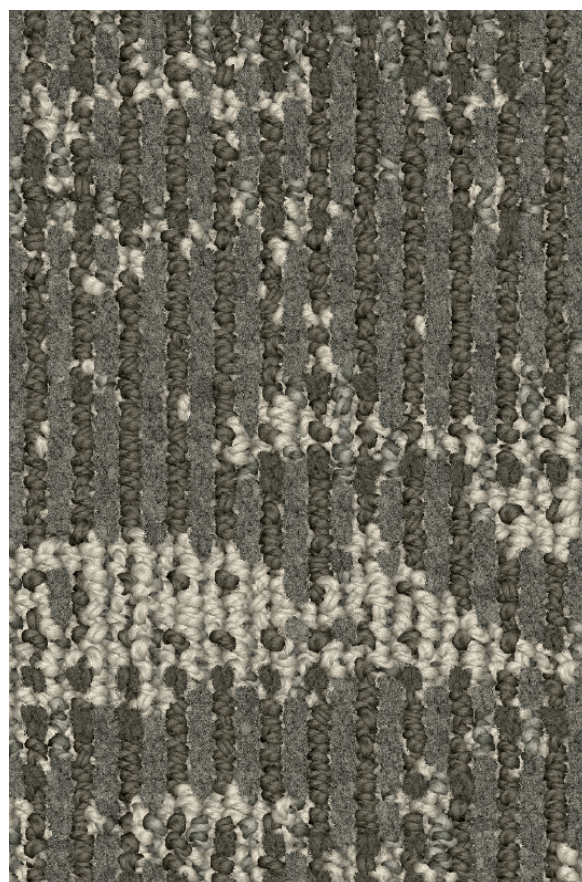
Manufacturer: Tarkett Hospitality
Address: 285 Kraft Drive
Dalton, GA 30721
Phone: 301.974.2249
Contact: Elle Pechiney
Elle.Pechiney@tarkett.com
Web: www.tarketthospitality.com



Description: Corridor
Choice Item: Opt 3
Style Number: D1438 Broadloom (Alchemy I)
Color: 420
Width: 15'
Repeat: 90" W x 180" L
Type: Dynamics - Multi Level Loop Servo Scroll Tip Shear
Content: 100% Lextron Enviro-Green Solution Dyed Nylon
Weight: 36 oz. tufted face weight
Primary Backing: Woven Polypropylene
Secondary Backing: Action Bac
Pile Height: .250" High, .187" Med, .062" Low
Gauge: 1/10"
Dye Method: Solution Dyed
Installation Method: Broadloom
Flame Requirements: Meets or exceeds requirement Class 1

Additional Information:

- Due to the manufacturing process of a tip shear product, the finished yarn weight will vary more than normal manufacturing tolerances and side match cannot be guaranteed.
- Carpet should be installed in accordance with the Carpet and Rug Institute's standard CRI-104. Carpet must be over manufacturer's recommended pad.
- Pattern streaks and banding are visually apparent streaking in patterned carpet resulting from linear juxtaposition of pattern elements visible in both length and width direction. IT IS NOT A CARPET DEFECT, but is inherent in solution dyed graphic and cut/loop patterns.
- All Specifications subject to normal manufacturing tolerance.



CHOICE HOTELS

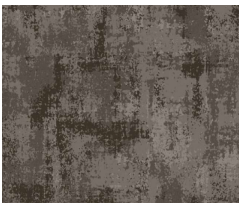
Quality
Public Space

Manufacturer: Tarkett Hospitality
Address: 285 Kraft Drive
Dalton, GA 30721
Phone: 301.974.224949
Contact: Elle Pechiney
Elle.Pechiney@tarkett.com
Web: www.tarketthospitality.com

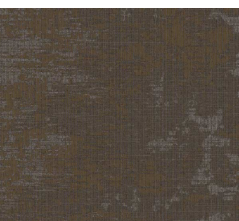
+ Approved Styles
+ Lowest Pricing
+ Fast Delivery
+ 10-Year Warranty
+ Broadloom Carpet
+ Lextron Solution-Dyed Nylon



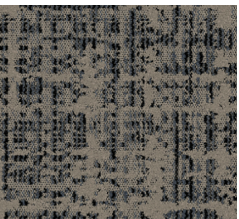
Product Type: Carpet Pad
All Public Space Areas
Choice Item: CPAD-001
Style Number: PDS28
Model : Performance D.S. 28oz.
Specs: 28 oz.



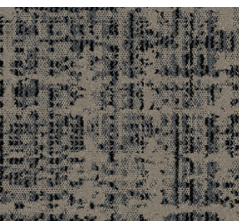
Product Type: Carpet Broadloom
Scheme: Classic
Public Space: Meeting Room
Choice Item: CPT-002.1
Style Number/Paradigm IV
Color Number: 530
Specs: 42 oz.
EViZg:GZeZVi: 9% L x 91.4A



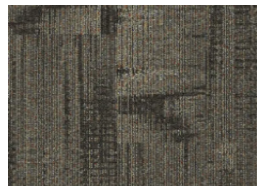
Product Type: Carpet Broadloom
Scheme: Classic
Public Space: Corridor, Elevator Lobby
Choice Item: CPT-003.1
Style Number: Alchemy I
Color: 430
Specs: 36oz
Pattern Repeat: 90" W x 180"L



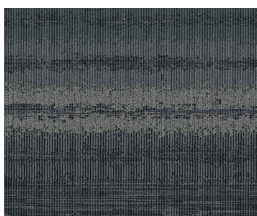
Product Type: Carpet Broadloom
Scheme: Select
Public Space: Front Desk, Lobby
Choice Item: CPT-004.1
Style Number: Saltmarsh II
Color: 590
Specs: 36oz.
Pattern Repeat: 48" W x 60"L



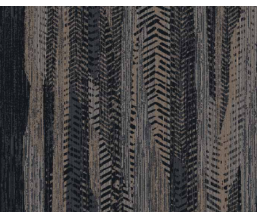
Product Type: Carpet Broadloom
Scheme: Select
Public Space: Lobby
Choice Item: CPT-002.2
Style Number: Saltmarsh II
Color: 590
Specs: 36oz.
Pattern Repeat: 48" W x 60"L



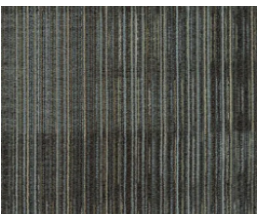
Product Type: Carpet Tile
Scheme: Elevated
Public Space: Lobby
Choice Item: CPT-002.3
Style Number: Chain Reaction 11183
Color: Rocket Launch 72208
Specs: 20oz.
Tile Size: 24" W x 24"L



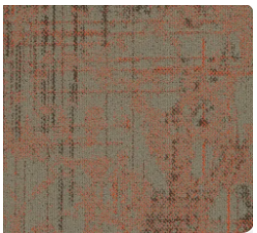
Product Type: Carpet Broadloom
Scheme: Select
Public Space: Meeting Room
Choice Item: CPT-005.2
Style Number: Alchemy III
Color: 260
Specs: 36oz.
Pattern Repeat: 48" W x 90"L



Product Type: Carpet Broadloom
Scheme: Select
Choice Item: CPT-006.2
Public Space: Corridor, Elevator Lobby
Style Number: Luna I
Color Number: 410
Specs: 36 oz.
Pattern Repeat: 90" W x 144"L



Product Type: Carpet Tile
Scheme: Elevated
Choice Item: CPT-008.3
Public Space: Meeting Room
Style Number: Maelstrom 04849
Color Number: Nature Calls 33209
Specs: 18 oz.
Tile Size: 24" W x 24"L



Product Type: Carpet Tile
Scheme: Elevated
Choice Item: CPT-009.3
Public Space: Corridor, Elevator Lobby
Style Number: Cartography 04843
Color Number: Boundary 15604
Specs: 20 oz.
Tile Size: 24" W x 24"L

CHOICE HOTELS

QUALITY - Classic, Select, Elevated
Public Space - Resilient Wall Base



Manufacturer: Tarkett Hospitality
Address: 285 Kraft Drive
Dalton, GA 30721
Phone: 301.974.2249
Contact: Elle Pechiney
Elle.Pechiney@tarkett.com
Web: tarketthospitality.com



Product Type: Resilient Wall Base
Elevator Lobby, Stairs,
Corridor - Classic, Select
Choice Item: RB-001
Style Number: CB-281
Color Number: 281 Grizzly
Specs: 4" H x 1/8" Thick x 120'L



Product Type: Resilient Wall Base
Fitness Center, Guest Laundry,
Vending - Classic, Select
Choice Item: RB-003
Style Number: CB-VL2
Color: VL2 Whispering Mist
Specs: 4" H x 1/8" Thick x 120'L



Product Type: Resilient Wall Base
Lobby, Meeting Room, Front Desk
Area, Stairs - Classic, Select
Choice Item: RB-002
Style Number: CB-32
Color Number: 32 Pebble
Specs: 4" H x 1/8" Thick x 120'L



Product Type: Resilient Wall Base
Fitness Center - Elevated
Choice Item: RB-002.3FIT
Style Number: MW-VL2-K Ambassador
Color: VL2 Whispering Mist
Specs: 4" H x 3/8" Thick x 8'L



Product Type: Resilient Wall Base
Guest Laundry - Elevated
Choice Item: RB-002.3
Style Number: MW-32-K Ambassador
Color: 32 Pebble
Specs: 4" H x 3/8" Thick x 8'L

CHOICE HOTELS

Quality: Classic Public Space - Meeting Room

Manufacturer: Tarkett Hospitality
Address: 285 Kraft Drive
Dalton, GA 30721
Phone: 301.974.2249
Contact: Elle Pechiney
Elle.Pechiney@tarkett.com
Web: www.tarketthospitality.com



Description: Broadloom Carpet
Choice Item: CPT-002.3
Style Number: Paradigm IV
Color: 530
Width: 15'
Repeat: 90" W x 91.4"L
Construction: Intrepid - Multi-Color Servo-Scroll Loop Tip Shear
Fiber: 100% Lextron Enviro-Green Solution Dyed Nylon
Tufted Pile Weight: 42 oz. Per Square Yard
Primary Backing: Woven Polypropylene
Secondary Backing: Action Bac
Pile Height: .250" High, .187" Med., .062" Low
Gauge: 1/10"
Dye Method: Solution Dyed
Flame Requirements: Meets or exceeds requirement Class 1

Additional Information:

- Carpet should be installed in accordance with the Carpet and Rug Institute's standard CRI-104/CRI-105.
- Pattern streaks and banding are visually apparent streaking in patterned carpet resulting from linear juxtaposition of pattern elements visible in both length and width direction. IT IS NOT A CARPET DEFECT, but is inherent in solution dyed graphic and cut/loop patterns.
- All Specifications subject to normal manufacturing tolerance.



CHOICE HOTELS

Quality: Classic

Public Space - Corridor, Elevator Lobby

Manufacturer: Tarkett Hospitality
Address: 285 Kraft Drive
Dalton, GA 30721

Phone: 301.974.2249
Contact: Elle Pechiney
Web: Elle.Pechiney@tarkett.com
www.tarketthospitality.com



Description: Broadloom Carpet
Choice Item: CPT-003.1
Style Number: Alchemy I
Color: 430
Width: 15'
Repeat: 90" W x 180"L
Type: Dynamics - Multi Level Loop Servo Scroll Tip Shear
Content: Lextron Enviro-Green Solution Dyed Nylon
Weight: 36 oz. tufted face weight
Primary Backing: Woven Polypropylene
Secondary Backing: Action Bac
Pile Height: .250" High, .187" Med, .062" Low
Gauge: 1/10"
Dye Method: Solution Dyed
Installation Method: Broadloom
Flame Requirements: Meets or exceeds requirement Class 1

Additional Information:

- Due to the manufacturing process of a tip shear product, the finished yarn weight will vary more than normal manufacturing tolerances and side match cannot be guaranteed.
- Carpet should be installed in accordance with the Carpet and Rug Institute's standard CRI-104. Carpet must be over manufacturer's recommended pad.
- Pattern streaks and banding are visually apparent streaking in patterned carpet resulting from linear juxtaposition of pattern elements visible in both length and width direction. IT IS NOT A CARPET DEFECT, but is inherent in solution dyed graphic and cut/loop patterns.
- All Specifications subject to normal manufacturing tolerance.



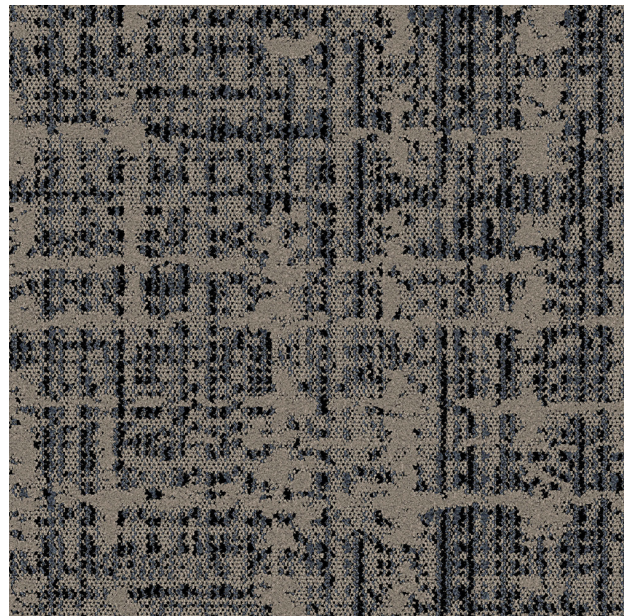
CHOICE HOTELS

Quality: Select
Public Space - Front Desk, Lobby

Manufacturer: Tarkett Hospitality
Address: 285 Kraft Drive
Dalton, GA 30721
Phone: 301.974.2249
Contact: Elle Pechiney
Elle.Pechiney@tarkett.com
Web: www.tarketthospitality.com



Description: Broadloom Carpet
Choice Item: CPT-004.1/CPT-002.2
Style Number: Saltmarsh II
Color: 590
Width: 12'
Repeat: 48" W x 60" L
Type: Dynamics - Multi Level Loop Servo Scroll Tip Sheer
Content: 100% Lextron Enviro-Green Solution Dyed Nylon
Weight: 36 oz. tufted face weight
Primary Backing: Woven Polypropylene
Secondary Backing: Action Bac
Pile Height: .250" High, .187" Med, .062" Low
Gauge: 1/10"
Dye Method: Solution Dyed
Installation Method: Broadloom
Flame Requirements: Meets or exceeds requirement Class 1



Additional Information:

- Due to the manufacturing process of a tip shear product, the finished yarn weight will vary more than normal manufacturing tolerances and side match cannot be guaranteed.
- Carpet should be installed in accordance with the Carpet and Rug Institute's standard CRI-104. Carpet must be over manufacturer's recommended pad.
- Pattern streaks and banding are visually apparent streaking in patterned carpet resulting from linear juxtaposition of pattern elements visible in both length and width direction. IT IS NOT A CARPET DEFECT, but is inherent in solution dyed graphic and cut/loop patterns.
- All Specifications subject to normal manufacturing tolerance.

CHOICE HOTELS

Quality - Select

Public Space - Meeting Room

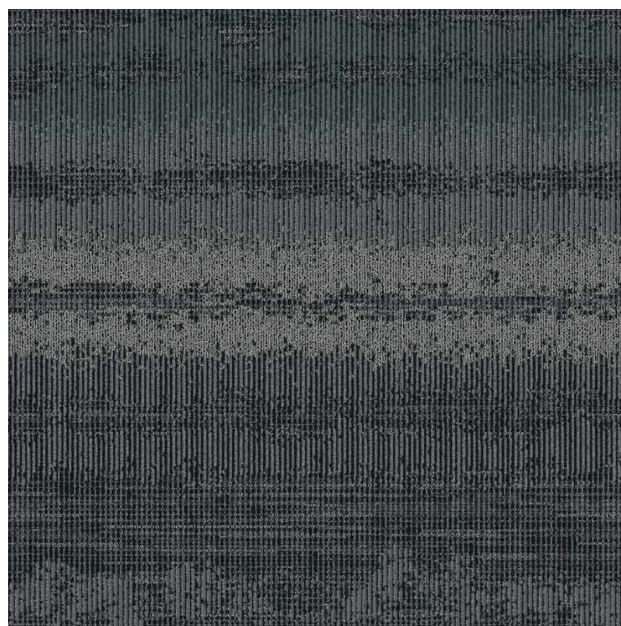
Manufacturer: Tarkett Hospitality
Address: 285 Kraft Drive
Dalton, GA 30721
Phone: 301.974.2249
Contact: Elle Pechiney
Elle.Pechiney@tarkett.com
Web: www.tarketthospitality.com



Description: Broadloom Carpet
Choice Item: CPT-005.2
Style Number: Alchemy III
Color: 260
Width: 15'
Repeat: 48" W x 90"L
Type: Dynamics - Multi Level Loop Servo Scroll Tip Shear
Content: 100% Lextron Enviro-Green Solution Dyed Nylon
Weight: 36 oz. tufted face weight
Primary Backing: Woven Polypropylene
Secondary Backing: Action Bac
Pile Height: .250" High, .187" Med, .062" Low
Gauge: 1/10"
Dye Method: Solution Dyed
Installation Method: Broadloom
Flame Requirements: Meets or exceeds requirement Class 1

Additional Information:

- Due to the manufacturing process of a tip shear product, the finished yarn weight will vary more than normal manufacturing tolerances and side match cannot be guaranteed.
- Carpet should be installed in accordance with the Carpet and Rug Institute's standard CRI-104. Carpet must be over manufacturer's recommended pad.
- Pattern streaks and banding are visually apparent streaking in patterned carpet resulting from linear juxtaposition of pattern elements visible in both length and width direction. IT IS NOT A CARPET DEFECT, but is inherent in solution dyed graphic and cut/loop patterns.
- All Specifications subject to normal manufacturing tolerance.



CHOICE HOTELS

Quality - Select

Public Space - Corridor, Elevator Lobby

Manufacturer: Tarkett Hospitality
Address: 285 Kraft Drive
Dalton, GA 30721
Phone: 301.974.2249
Contact: Elle Pechiney
Elle.Pechiney@tarkett.com
Web: www.tarketthospitality.com



Description: Broadloom Carpet
Choice Item: CPT-006.2
Style Number: Luna I
Color: 410
Width: 15'
Repeat: 90" W x 144"L
Type: Dynamics - Multi Level Loop Servo Scroll Tip Shear
Content: 100% Lextron Enviro-Green Solution Dyed Nylon
Weight: 36 oz. tufted face weight
Primary Backing: Woven Polypropylene
Secondary Backing: Action Bac
Pile Height: .250" High, .187" Med, .062" Low
Gauge: 1/10"
Dye Method: Solution Dyed
Installation Method: Broadloom
Flame Requirements: Meets or exceeds requirement Class 1



Additional Information:

- Due to the manufacturing process of a tip shear product, the finished yarn weight will vary more than normal manufacturing tolerances and side match cannot be guaranteed.
- Carpet should be installed in accordance with the Carpet and Rug Institute's standard CRI-104. Carpet must be over manufacturer's recommended pad.
- Pattern streaks and banding are visually apparent streaking in patterned carpet resulting from linear juxtaposition of pattern elements visible in both length and width direction. IT IS NOT A CARPET DEFECT, but is inherent in solution dyed graphic and cut/loop patterns.
- All Specifications subject to normal manufacturing tolerance.

CHOICE HOTELS

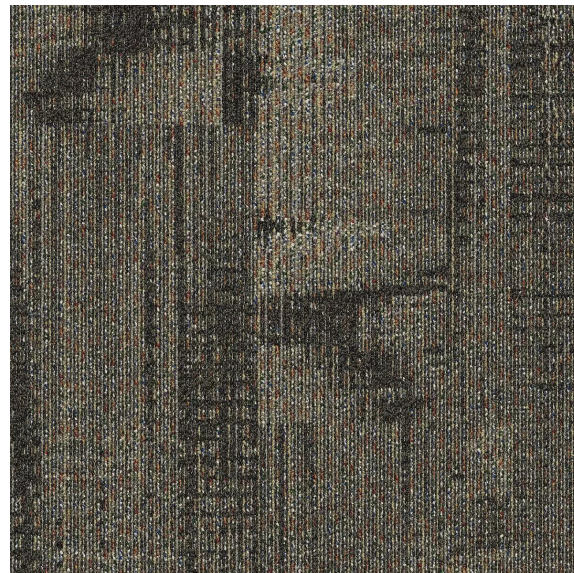
Quality - Elevated

Public Space Carpet Tile - Lobby

Manufacturer: Tarkett Hospitality
Address: 285 Kraft Drive
Dalton, GA 30721
Phone: 301.974.2249
Contact: Elle Pechiney
Elle.Pechiney@tarkett.com
Web: www.tarketthospitality.com



Description: Lobby Carpet Tile
Choice Item: CPT-002.3
Style Number: Chain Reaction 11183
Color: Rocket Launch 72208
Carpet Tile Size: 9" x 36" or 24" x 24"
Type: Tufted Patterned Loop
Content: TDX Nylon
Weight: 20 oz. tufted face weight
Primary Backing: Synthetic Non-Woven
Secondary Backing: Pile
Height: Ethos® Modular w/Omnicoat Technology
Gauge: 0.110" (22.8mm)
Dye Method: Installation
Method: Solution Dyed
Requirements: Glue-Down
Meets or exceeds requirement Class 1



Additional Information:

- Carpet should be installed in accordance with the Carpet and Rug Institute's standard CRI-104/CRI-105.
- Pattern streaks and banding are visually apparent streaking in patterned carpet resulting from linear juxtaposition of pattern elements visible in both length and width direction. IT IS NOT A CARPET DEFECT, but is inherent in solution dyed graphic and cut/loop patterns.
- All Specifications subject to normal manufacturing tolerance.

CHOICE HOTELS

Quality - Elevated

Public Space Carpet Tile - Meeting Room

Manufacturer: Tarkett Hospitality
Address: 285 Kraft Drive
Dalton, GA 30721
Phone: 301.974.2249
Contact: Elle Pechiney
Elle.Pechiney@tarkett.com
Web: www.tarketthospitality.com



Description: Carpet Tile
Choice Item: CPT-008.3
Style Number: Maelstrom 04849
Color: Nature Calls 33209
Carpet Tile Size: 24" x 24"
Type: Tufted Patterned Loop
Content: TDX Nylon
Weight: 18 oz. tufted face weight
Primary Backing: Synthetic Non-Woven
Secondary Backing: Pile
Height: Ethos® Modular w/Omnicoat Technology
Gauge: 0.110" (22.8mm)
Dye Method: Installation
Method: Solution Dyed
Requirements: Glue-Down
Meets or exceeds requirement Class 1



Additional Information:

- Carpet should be installed in accordance with the Carpet and Rug Institute's standard CRI-104/CRI-105.
- Pattern streaks and banding are visually apparent streaking in patterned carpet resulting from linear juxtaposition of pattern elements visible in both length and width direction. IT IS NOT A CARPET DEFECT, but is inherent in solution dyed graphic and cut/loop patterns.
- All Specifications subject to normal manufacturing tolerance.

CHOICE HOTELS

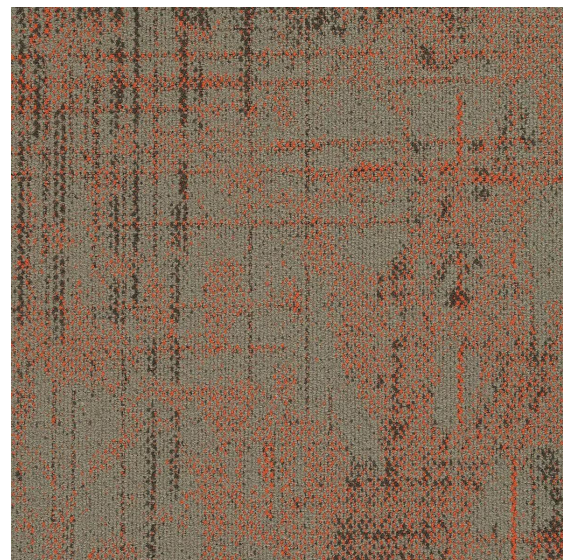
Quality - Elevated

Public Space Carpet Tile - Corridor, Elevator Lobby

Manufacturer: Tarkett Hospitality
Address: 285 Kraft Drive
Dalton, GA 30721
Phone: 301.974.2249
Contact: Elle Pechiney
Elle.Pechiney@tarkett.com
Web: www.tarketthospitality.com



Description: Carpet Tile
Choice Item: CPT-009.3
Style Number: Cartography 04843
Color: Boundary 15604
Carpet Tile Size: 9" x 36" or 24" x 24"
Type: Tufted Patterned Loop
Content: TDX Nylon
Weight: 20 oz. tufted face weight
Primary Backing: Synthetic Non-Woven
Secondary Backing: Pile
Height: Ethos® Modular w/Omnicoat Technology
Gauge: 0.110" (22.8mm)
Dye Method: Installation
Method: Solution Dyed
Requirements: Glue-Down
Meets or exceeds requirement Class 1



Additional Information:

- Carpet should be installed in accordance with the Carpet and Rug Institute's standard CRI-104/CRI-105.
- Pattern streaks and banding are visually apparent streaking in patterned carpet resulting from linear juxtaposition of pattern elements visible in both length and width direction. IT IS NOT A CARPET DEFECT, but is inherent in solution dyed graphic and cut/loop patterns.
- All Specifications subject to normal manufacturing tolerance.

CHOICE HOTELS

Quality

LVT / Guestroom

Manufacturer: Tarkett Hospitality
Address: 285 Kraft Drive
Dalton, GA 30721

Phone: 301.974.2249
Contact: Elle Pechiney
Elle.Pechiney@tarkett.com

Web: www.tarketthospitality.com



Choice Item:	Tarkett Value LVT-001
Classification:	Class III, Type B (Solid Vinyl Floor)
Size:	7" x 48"
Total Thickness:	0.197" (5 mm)
Wear Layer Thickness:	20 mil (0.51mm)
Accoustical Backing:	0.039" (1mm) IXPE
Installation Method:	Uniclic®
Pattern:	ProGen™
Pattern Type:	Chevron
Color:	270265025 Tawny
Format Type:	Microbeveled
Edge Treatment:	Pass
Flexibility:	Passes
Chemical Resistance:	250 psi, $\leq 0.005"$
Static Load Limit:	$\Delta E \leq 8.0$
Heat Stability:	$\Delta E \leq 8.0$
Light Stability:	SCOF ≥ 0.5
Slip resistance:	Pass
Squareness:	Class 1 (≥ 0.45 W/cm ²) Pass
Flammability:	$\Delta IIC \geq 21$ dB
Residual Indentation:	
Impact Sound:	68
IIC Impact Sound	15-year limited (Light)
Reduction Rating:	
Commercial Warranty:	





Tarkett Hospitality
285 Kraft Drive
Dalton, GA 30721

301-974-2249
tarketthospitality.com