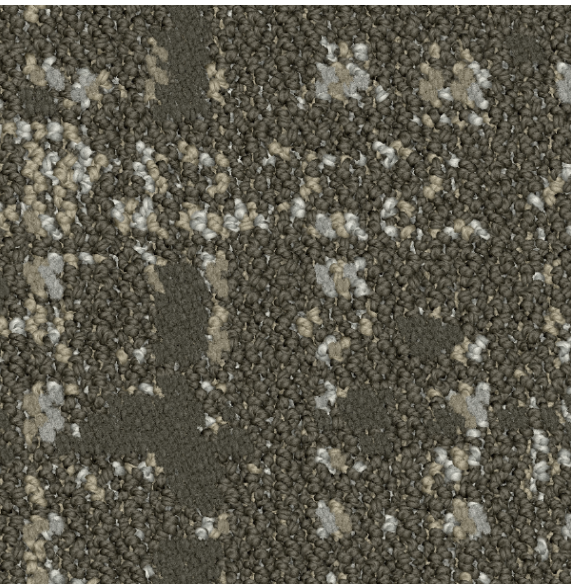


CHOICE HOTELS  
Quality

Tarkett Hospitality





# CHOICE HOTELS

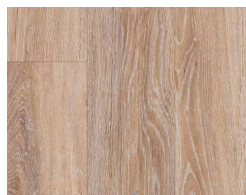
## Quality

Manufacturer: Tarkett Hospitality  
Address: 285 Kraft Drive  
Dalton, GA 30721  
Phone: 301.974.2249  
Contact: Elle Pechiney  
Elle.Pechiney@tarkett.com  
Web: www.tarketthospitality.com

- + Approved Styles
- + Lowest Pricing
- + Fast Delivery
- + 10-Year Warranty
- + Broadloom Carpet
- + Lextron Solution-Dyed Nylon



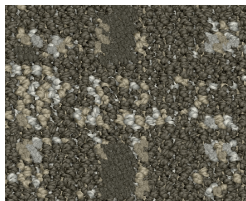
Product Type: Carpet Tile  
Guestroom  
Choice Item: CPTB-001  
Style Number: A0005  
Color Number: 42714  
Specs: 21 oz.  
Carpet Tile Size: 9" x 36" or 24" x 24" Tile



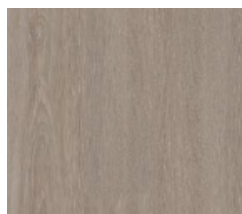
Product Type: LVT  
Guestroom - All Schemes  
Choice Item: LVT-001  
ProGen  
Style Number: 270265015 Vista Oak  
Color: Limed Natural  
Specs: 7" W x 48" L Plank



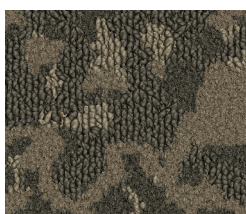
Product Type: Carpet Broadloom  
Guestroom  
Choice Item: CP-001  
Style Number: F' 001  
Color Number: 100  
Specs: 100 oz.  
EViiZg: GZeZVi: 90%L x +- # .A



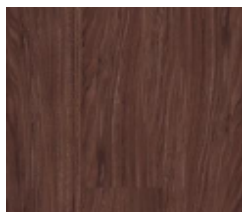
Product Type: Carpet Broadloom  
Corridor  
Style Number: D110 (Saltmarsh I)  
Color Number: 623  
Specs: 36 oz.  
Pattern Repeat: 90"W x 100"L



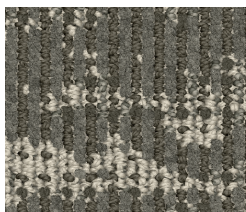
Product Type: LVT  
Guestroom - All Schemes  
Choice Item: LVT-001  
iD Latitude  
Style Number: PLWD  
Color: 3606 Chamois Oak  
Specs: 6" x 48" Plank



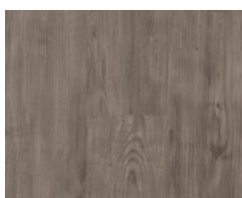
Product Type: Carpet Broadloom  
Corridor  
Style Number: 102N (Terra III)  
Color Number: 424  
Specs: 42oz.  
Pattern Repeat: 90"W x 90"L



Product Type: LVT  
Guestroom - All Schemes  
Choice Item: LVT-001  
iD Latitude  
Style Number: PLWD  
Color: 3401 Black Walnut  
Specs: 6" x 48" Plank



Product Type: Carpet Broadloom  
Corridor  
Style Number: D1438 (Alchemy I)  
Color Number: 420  
Specs: 36oz.  
Pattern Repeat: 90"W x 180"L



Product Type: LVT  
Guestroom - All Schemes  
Choice Item: LVT-001  
iD Latitude  
Style Number: PLWD  
Color: 5136 Acadia Pine  
Specs: 6" x 48" Plank



Product Type: Resilient Wall Base  
All Areas  
Item: RB-001  
Traditional Rubber Wall Base with Toe  
Style Number: DC-281  
Color: 281 Grizzly  
Specs: 4" H x 1/8" Thick x 120' L

# CHOICE HOTELS

## Quality

### Carpet Tile / Guestroom

Manufacturer: Tarkett Hospitality  
Address: 285 Kraft Drive  
Dalton, GA 30721  
Phone: 301.974.2249  
Contact: Elle Pechiney  
Elle.Pechiney@tarkett.com  
Web: www.tarkethospitality.com



Description: Guestroom  
Choice Item: CPTB-001  
Style Number: A0005 (Loop Stitch) Carpet Tile  
Color: 42714 Woven Cane  
Carpet Tile Size: 9" x 36" or 224" x 24"  
Type: Tufted Patterned Loop  
Content: TDX Nylon  
Weight: 21 oz. tufted face weight  
Primary Backing: Synthetic Non-Woven  
Secondary Backing: Ethos® Modular w/Omnicoat Technology  
Pile Height: 0.110" (22.8mm)  
Gauge: 1/10"  
Dye Method: Solution Dyed  
Installation Method: Glue-Down  
Flame Requirements: Meets or exceeds requirement Class 1

#### Additional Information:

- Carpet should be installed in accordance with the Carpet and Rug Institute's standard CRI-104/CRI-105.
- Pattern streaks and banding are visually apparent streaking in patterned carpet resulting from linear juxtaposition of pattern elements visible in both length and width direction. IT IS NOT A CARPET DEFECT, but is inherent in solution dyed graphic and cut/loop patterns.
- All Specifications subject to normal manufacturing tolerance.



# CHOICE HOTELS

## Quality Broadloom / Guestroom

Manufacturer: Tarkett Hospitality  
Address: 285 Kraft Drive  
Dalton, GA 30721  
Phone: 301.974.2249  
Contact: Elle Pechiney  
Elle.Pechiney@tarkett.com  
Web: www.tarketthospitality.com



Description: Guestroom  
Choice Item: CPT-001.3  
Style Number: Q2032 Broadloom  
Color: 299  
Width: 15'  
Construction: Dynamics - Servo-Scroll Loop Tip Shear  
Fiber: 100% Lextron Enviro-Green Solution Dyed Nylon  
Tufted Pile Weight: 32 oz. Per Square Yard  
Primary Backing: Woven Polypropylene  
Secondary Backing: Action Bac  
Pile Height: .250" High, .187" Med., .062" Low  
Gauge: 1/10"  
Dye Method: Solution Dyed  
Flame Requirements: Meets or exceeds requirement Class 1

### Additional Information:

- Carpet should be installed in accordance with the Carpet and Rug Institute's standard CRI-104/CRI-105.
- Pattern streaks and banding are visually apparent streaking in patterned carpet resulting from linear juxtaposition of pattern elements visible in both length and width direction. IT IS NOT A CARPET DEFECT, but is inherent in solution dyed graphic and cut/loop patterns.
- All Specifications subject to normal manufacturing tolerance.





# CHOICE HOTELS

Quality  
LVT / Guestroom

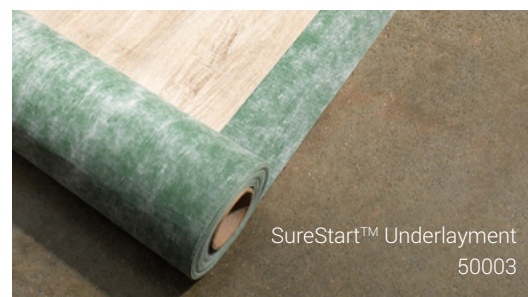
Manufacturer: Tarkett Hospitality  
Address: 285 Kraft Drive  
Dalton, GA 30721  
Phone: 301.974.2249  
Contact: Elle Pechiney  
Elle.Pechiney@tarkett.com  
Web: www.tarketthospitality.com



	Standard	Tarkett Value
Choice Item:	LVT-001	RF-01
Classification:	ASTM 1700	Class III, Type B (Solid Vinyl Floor)
Surface Treatment:		Techtonic®
Size:		6" x 48"
Total Thickness:	ASTM F386	0.120" (3.05 mm)
Wear Layer Thickness:	ASTM F410	20 mil (0.51mm)
Installation Method:		Glue-Down
Pattern:		iD Latitude™
Pattern Type:		Wood
Color:		3606 Chamois Oak
Format Type:		Plank
Flexibility:	ASTM F137	Pass
Chemical Resistance:	ASTM F925	Passes
Static Load Limit:	ASTM F970	250 psi, $\leq 0.005"$
Heat Stability:	ASTM F1514	$\Delta E \leq 8.0$
Light Stability:	ASTM F1515	$\Delta E \leq 8.0$
Slip resistance:	ASTM D2047	SCOF $\geq 0.5$
Squareness:	ASTM F2055	Pass
Flammability:	ASTM E648	Class 1 ( $\geq 0.45 \text{ W/cm}^2$ )
Residual Indentation:	ASTM F1914	Pass
Commercial Warranty:		20-year limited

## SureStart™ Underlayment 50003

Product Type	Subflooring
Length	33.30 ft (10.1 m), 44.40 ft (13.5 m)
Total thickness	0.060" (1.5 mm)
Width	3 ft, 4.50 ft
Commercial Warranty	10 year limited light commercial



# CHOICE HOTELS

Quality  
LVT / Guestroom

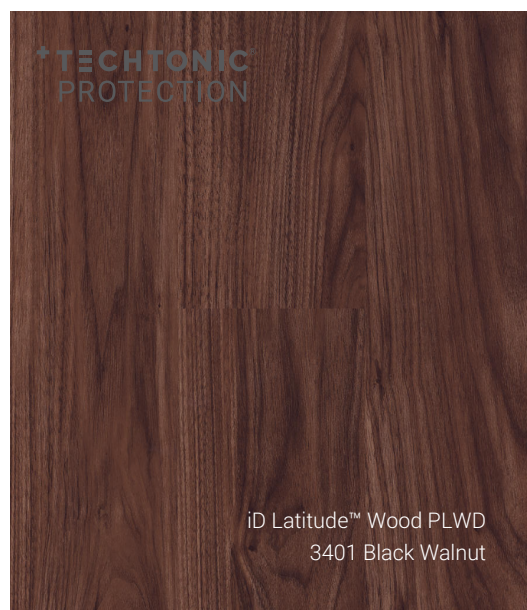
Manufacturer: Tarkett Hospitality  
Address: 285 Kraft Drive  
Dalton, GA 30721  
Phone: 301.974.2249  
Contact: Elle Pechiney  
Elle.Pechiney@tarkett.com  
Web: www.tarketthospitality.com



	Standard	Tarkett Value
Choice Item:	LVT-001	RF-01
Classification:	ASTM 1700	Class III, Type B (Solid Vinyl Floor)
Surface Treatment:		Techtonic®
Size:		6" x 48"
Total Thickness:	ASTM F386	0.120" (3.05 mm)
Wear Layer Thickness:	ASTM F410	20 mil (0.51mm)
Installation Method:		Glue-Down
Pattern:		iD Latitude™
Pattern Type:		Wood
Color:		3401 Black Walnut
Format Type:		Plank
Flexibility:	ASTM F137	Pass
Chemical Resistance:	ASTM F925	Passes
Static Load Limit:	ASTM F970	250 psi, $\leq 0.005"$
Heat Stability:	ASTM F1514	$\Delta E \leq 8.0$
Light Stability:	ASTM F1515	$\Delta E \leq 8.0$
Slip resistance:	ASTM D2047	SCOF $\geq 0.5$
Squareness:	ASTM F2055	Pass
Flammability:	ASTM E648	Class 1 ( $\geq 0.45$ W/cm <sup>2</sup> )
Residual Indentation:	ASTM F1914	Pass
Commercial Warranty:		20-year limited

## SureStart™ Underlayment 50003

Product Type	Subflooring
Length	33.30 ft (10.1 m), 44.40 ft (13.5 m)
Total thickness	0.060" (1.5 mm)
Width	3 ft, 4.50 ft
Commercial Warranty	10 year limited light commercial



iD Latitude™ Wood PLWD  
3401 Black Walnut



SureStart™ Underlayment  
50003



# CHOICE HOTELS

## Quality LVT / Guestroom

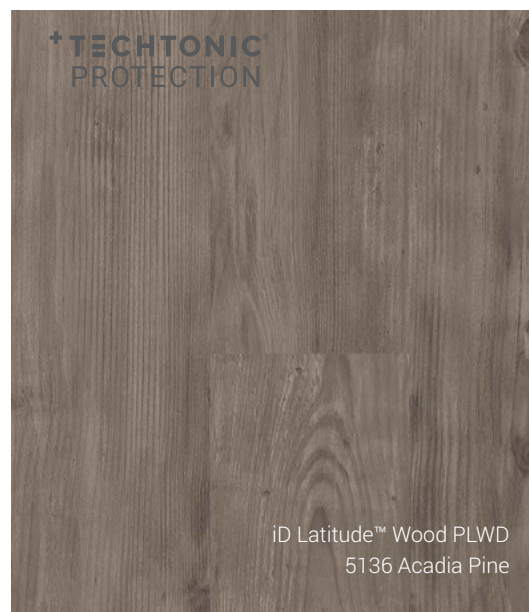
Manufacturer: Tarkett Hospitality  
Address: 285 Kraft Drive  
Dalton, GA 30721  
Phone: 301.974.2249  
Contact: Elle Pechiney  
Elle.Pechiney@tarkett.com  
Web: www.tarketthospitality.com



	Standard	Tarkett Value
Choice Item:	LVT-001	RF-01
Classification:	ASTM 1700	Class III, Type B (Solid Vinyl Floor)
Surface Treatment:		Techtonic®
Size:		6" x 48"
Total Thickness:	ASTM F386	0.120" (3.05 mm)
Wear Layer Thickness:	ASTM F410	20 mil (0.51mm)
Installation Method:		Glue-Down
Pattern:		iD Latitude™
Pattern Type:		Wood
Color:		5136 Acadia Pine
Format Type:		Plank
Flexibility:	ASTM F137	Pass
Chemical Resistance:	ASTM F925	Passes
Static Load Limit:	ASTM F970	250 psi, $\leq 0.005"$
Heat Stability:	ASTM F1514	$\Delta E \leq 8.0$
Light Stability:	ASTM F1515	$\Delta E \leq 8.0$
Slip resistance:	ASTM D2047	SCOF $\geq 0.5$
Squareness:	ASTM F2055	Pass
Flammability:	ASTM E648	Class 1 ( $\geq 0.45$ W/cm <sup>2</sup> )
Residual Indentation:	ASTM F1914	Pass
Commercial Warranty:		20-year limited

### SureStart™ Underlayment 50003

Product Type	Subflooring
Length	33.30 ft (10.1 m), 44.40 ft (13.5 m)
Total thickness	0.060" (1.5 mm)
Width	3 ft, 4.50 ft
Commercial Warranty	10 year limited light commercial



iD Latitude™ Wood PLWD  
5136 Acadia Pine



SureStart™ Underlayment  
50003

# CHOICE HOTELS

Quality

LVT / Guestroom

Manufacturer: Tarkett Hospitality  
Address: 285 Kraft Drive  
Dalton, GA 30721  
  
Phone: 301.974.2249  
Contact: Elle Pechiney  
Elle.Pechiney@tarkett.com  
  
Web: www.tarketthospitality.com



Choice Item:	<b>Tarkett Value</b> LVT-001
Classification:	Class III, Type B (Solid Vinyl Floor)
Size:	7" x 48"
Total Thickness:	0.197" (5 mm)
Wear Layer Thickness:	20 mil (0.51mm)
Accoustical Backing:	0.039" (1mm) IXPE
Installation Method:	Uniclic®
Pattern:	ProGen™
Pattern Type:	Vista Oak
Color:	270265015 Limed Natural
Format Type:	Plank
Edge Treatment:	Microbeveled
Flexibility:	Pass
Chemical Resistance:	Passes
Static Load Limit:	250 psi, $\leq 0.005"$
Heat Stability:	$\Delta E \leq 8.0$
Light Stability:	$\Delta E \leq 8.0$
Slip resistance:	SCOF $\geq 0.5$
Squareness:	Pass
Flammability:	Class 1 ( $\geq 0.45$ W/cm <sup>2</sup> )
Residual Indentation:	Pass
Impact Sound:	$\Delta IIC \geq 21$ dB
IIC Impact Sound	
Reduction Rating:	68
Commercial Warranty:	15-year limited (Light)



**ProGen™**  
**270265015 Vista Oak Limed Natural**



# CHOICE HOTELS

## Quality

### Broadloom / Corridor - Opt 1

Manufacturer: Tarkett Hospitality  
Address: 285 Kraft Drive  
Dalton, GA 30721  
  
Phone: 301.974.2249  
Contact: Elle Pechiney  
Elle.Pechiney@tarkett.com  
Web: www.tarketthospitality.com

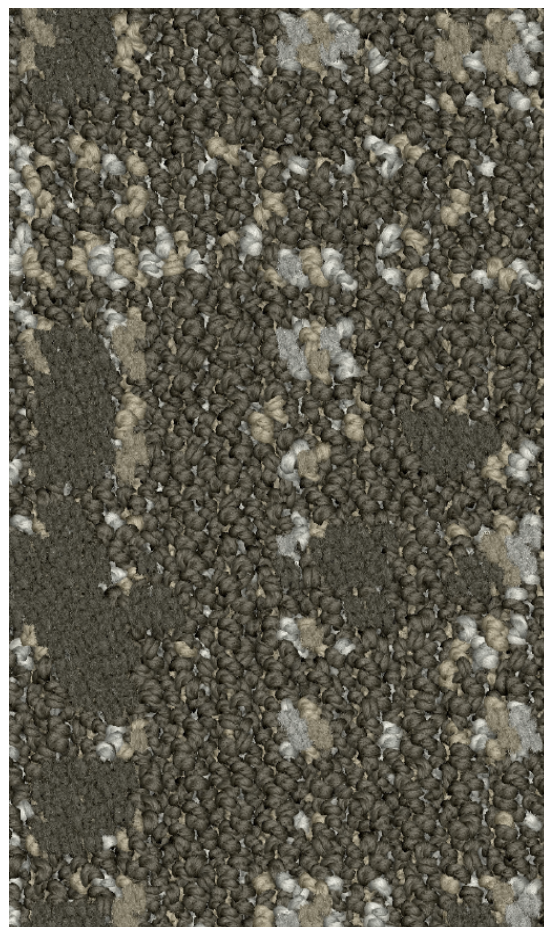


---

Description: Corridor  
Choice Item: Opt 1  
Style Number: 110D Broadloom (Saltmarsh I)  
Color: 623  
Width: 15'  
Repeat: 90"W x 100"L  
Type: Dynamics - Multi Level Loop Servo Scroll Tip Shear  
Content: Lextron Enviro-Green Solution Dyed Nylon  
Weight: 36 oz. tufted face weight  
Primary Backing: Woven Polypropylene  
Secondary Backing: Action Bac  
Pile Height: .250" High, .187" Med, .062" Low  
Gauge: 1/10"  
Dye Method: Solution Dyed  
Installation Method: Broadloom  
Flame Requirements: Meets or exceeds requirement Class 1

#### Additional Information:

- Due to the manufacturing process of a tip shear product, the finished yarn weight will vary more than normal manufacturing tolerances and side match cannot be guaranteed.
- Carpet should be installed in accordance with the Carpet and Rug Institute's standard CRI-104. Carpet must be over manufacturer's recommended pad.
- Pattern streaks and banding are visually apparent streaking in patterned carpet resulting from linear juxtaposition of pattern elements visible in both length and width direction. IT IS NOT A CARPET DEFECT, but is inherent in solution dyed graphic and cut/loop patterns.
- All Specifications subject to normal manufacturing tolerance.



# CHOICE HOTELS

Quality

Broadloom / Corridor- Opt 2

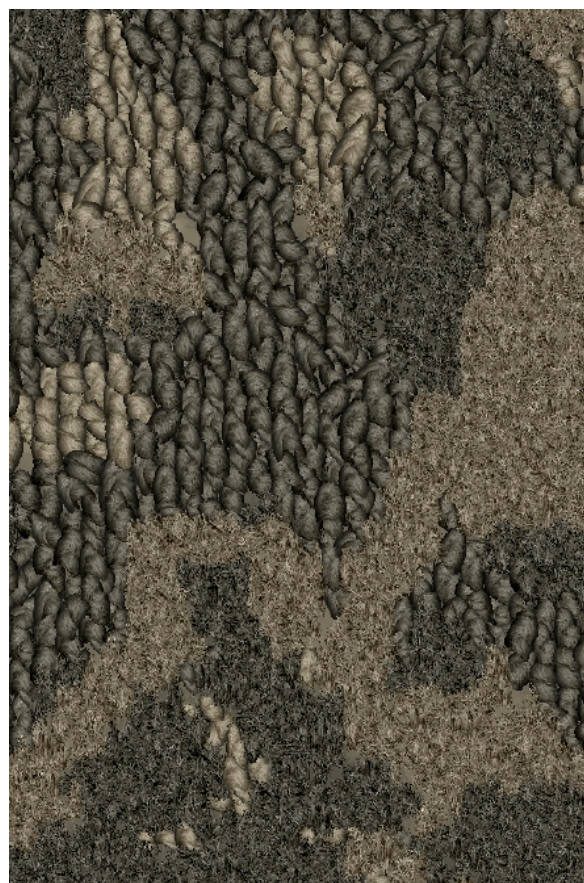
Manufacturer: Tarkett Hospitality  
Address: 285 Kraft Drive  
Dalton, GA 30721  
Phone: 301.974.2249  
Contact: Elle Pechiney  
Elle.Pechiney@tarkett.com  
Web: www.tarketthospitality.com



Description: Corridor  
Choice Item: Opt 2  
Style Number: 102N Broadloom (Terra III)  
Color: 424  
Width: 15'  
Repeat: 90"W x 90"L  
Type: Intrepid - Multi Level Loop Servo Scroll Tip Shear  
Content: 100% Lextron Enviro-Green Solution Dyed Nylon  
Weight: 42 oz. tufted face weight  
Primary Backing: Woven Polypropylene  
Secondary Backing: Action Bac  
Pile Height: .250" High, .187" Med, .062" Low  
Gauge: 1/10"  
Dye Method: Solution Dyed  
Installation Method: Broadloom  
Flame Requirements: Meets or exceeds requirement Class 1

## Additional Information:

- Due to the manufacturing process of a tip shear product, the finished yarn weight will vary more than normal manufacturing tolerances and side match cannot be guaranteed.
- Carpet should be installed in accordance with the Carpet and Rug Institute's standard CRI-104. Carpet must be over manufacturer's recommended pad.
- Pattern streaks and banding are visually apparent streaking in patterned carpet resulting from linear juxtaposition of pattern elements visible in both length and width direction. IT IS NOT A CARPET DEFECT, but is inherent in solution dyed graphic and cut/loop patterns.
- All Specifications subject to normal manufacturing tolerance.





# CHOICE HOTELS

## Quality

### Broadloom/ Corridor - Opt 3

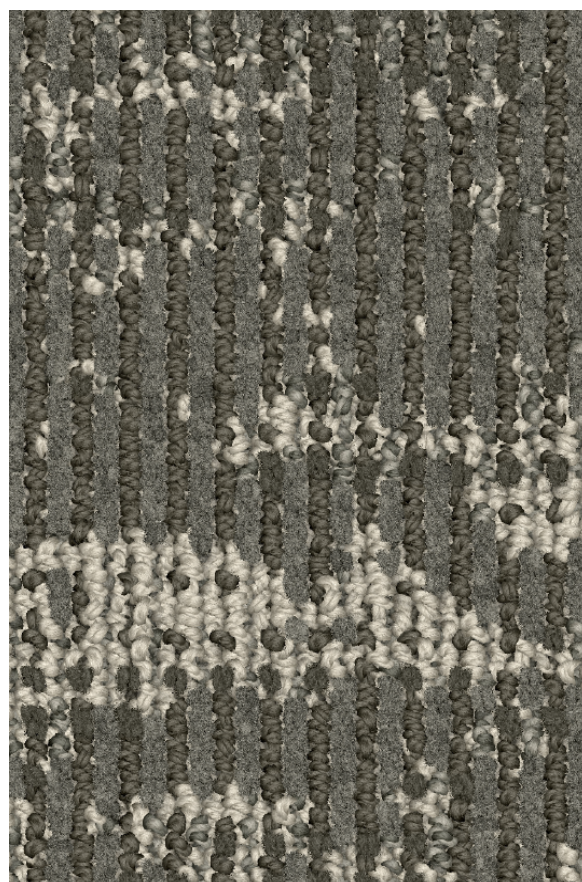
Manufacturer: Tarkett Hospitality  
Address: 285 Kraft Drive  
Dalton, GA 30721  
Phone: 301.974.2249  
Contact: Elle Pechiney  
Elle.Pechiney@tarkett.com  
Web: www.tarketthospitality.com



Description: Corridor  
Choice Item: Opt 3  
Style Number: D1438 Broadloom (Alchemy I)  
Color: 420  
Width: 15'  
Repeat: 90"W x 180"L  
Type: Dynamics - Multi Level Loop Servo Scroll Tip Shear  
Content: 100% Lextron Enviro-Green Solution Dyed Nylon  
Weight: 36 oz. tufted face weight  
Primary Backing: Woven Polypropylene  
Secondary Backing: Action Bac  
Pile Height: .250" High, .187" Med, .062" Low  
Gauge: 1/10"  
Dye Method: Solution Dyed  
Installation Method: Broadloom  
Flame Requirements: Meets or exceeds requirement Class 1

#### Additional Information:

- Due to the manufacturing process of a tip shear product, the finished yarn weight will vary more than normal manufacturing tolerances and side match cannot be guaranteed.
- Carpet should be installed in accordance with the Carpet and Rug Institute's standard CRI-104. Carpet must be over manufacturer's recommended pad.
- Pattern streaks and banding are visually apparent streaking in patterned carpet resulting from linear juxtaposition of pattern elements visible in both length and width direction. IT IS NOT A CARPET DEFECT, but is inherent in solution dyed graphic and cut/loop patterns.
- All Specifications subject to normal manufacturing tolerance.





**Tarkett Hospitality**  
285 Kraft Drive  
Dalton, GA 30721

301-974-2249  
[tarketthospitality.com](http://tarketthospitality.com)