

iD Latitude™ Abstract

LUXURY VINYL TILE

 **Tarkett®**



Ready to go—wherever your ideas take you

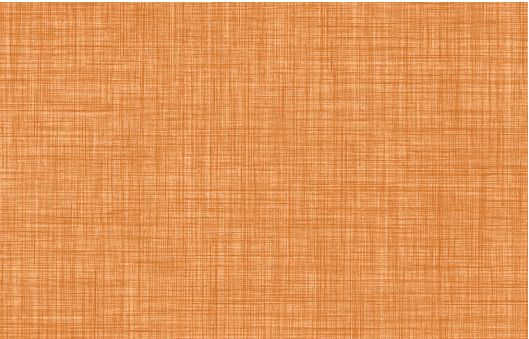
iD Latitude™ brings the full trifecta: great design, lasting performance, and practical affordability. Our latest updates to the collection offer forward-looking wood, stone, and abstract patterns that support your vision for every space. With quick installation, immediate occupancy and top-of-class Techtonic® protection, these 72 hard-working colorways are ready to support every step of your next project.

Because the collection is so expansive, we've divided iD Latitude Wood, Stone, and Abstract into three separate volumes.

Stria Marble PLSM Nimbus 5102 | 6" x 36" unidirectional installation
Color Zone PLCZ Harbor 7566 | 6" x 36" unidirectional installation



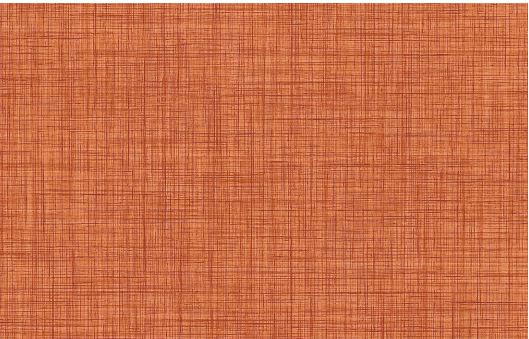
Color Zone PLCZ Royale 7553, Nightfall 7552, Sunset 7558, Zinnia 7569, Villa White 7563, Overcast 7560 | 18" x 18" quarter-turn installation
Fine Lines PLFL Taupe 5110 | 18" x 18" quarter-turn installation



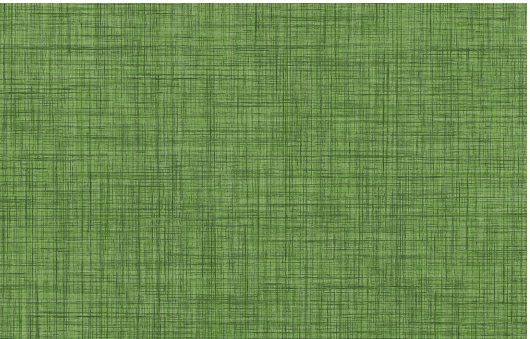
Color Zone PLCZ Zinnia 7569



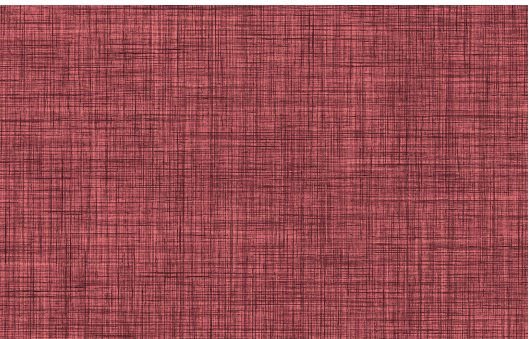
Color Zone PLCZ Afterglow 7557



Color Zone PLCZ Sunset 7558



Color Zone PLCZ Paradise 7568



Color Zone PLCZ Star Crossed 7559



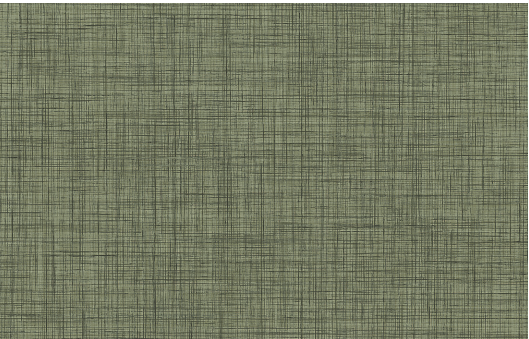
Color Zone PLCZ Kingston 7555



Color Zone PLCZ Blossom 7570



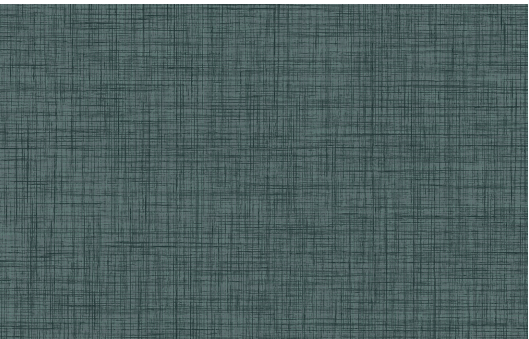
Color Zone **PLCZ** Coastline 7556 | 18" x 18" vertical ashlar installation
 Fine Lines **PLFL** Greige 5103 | 6" x 36" herringbone installation



Color Zone **PLCZ** Coastline 7556



Color Zone **PLCZ** Gulfstream 7567



Color Zone **PLCZ** Watermist 7554



Color Zone **PLCZ** Royale 7553



Color Zone **PLCZ** Palace 7551



Color Zone **PLCZ** Nightfall 7552



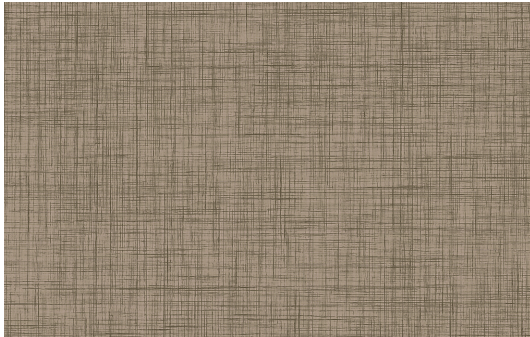
Color Zone PLCZ Windfresh 7562, Villa White 7563 | 6" x 36" unidirectional installation



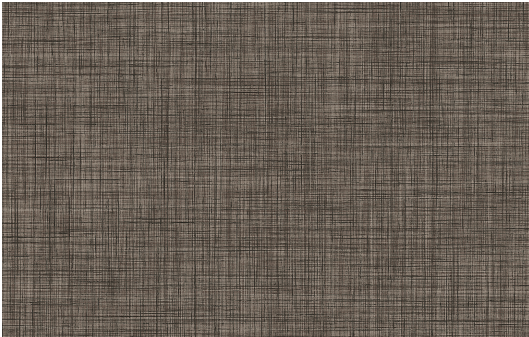
Color Zone PLCZ Villa White 7563



Color Zone PLCZ Landmark 7565



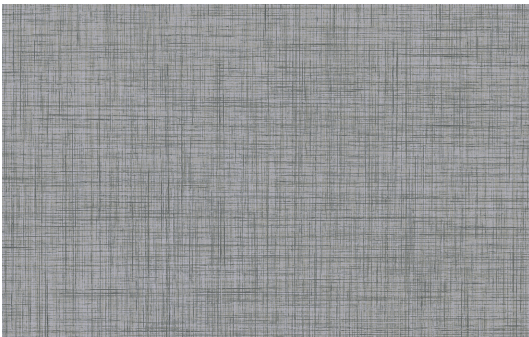
Color Zone PLCZ Barley 7564



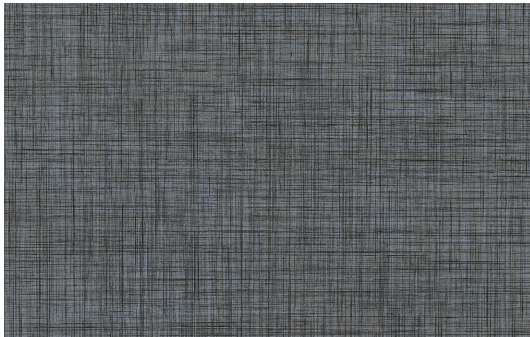
Color Zone PLCZ Harbor 7566



Color Zone PLCZ Overcast 7560



Color Zone PLCZ Windfresh 7562



Color Zone PLCZ Vapor 7561



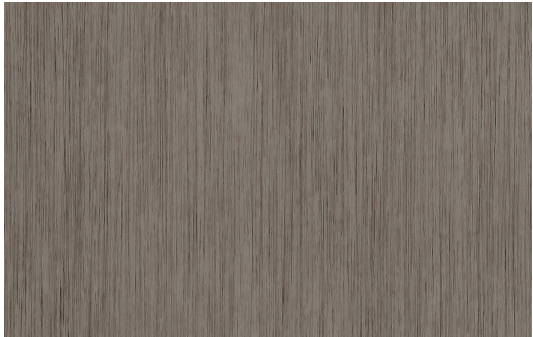
Color Zone PLCZ Barley 7564 | 6" x 36" unidirectional installation
Fine Lines PLFL Greige 5103 | 6" x 36" unidirectional installation



Fine Lines PLFL Bisque 5101



Fine Lines PLFL Greige 5103



Fine Lines PLFL Taupe 5110



TexGrain PLTG Cool Beige 3542



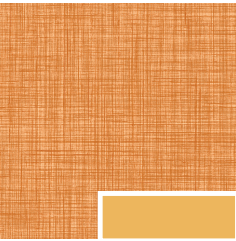
TexGrain PLTG Charcoal 3545



Stria Marble PLSM Nimbus 5102

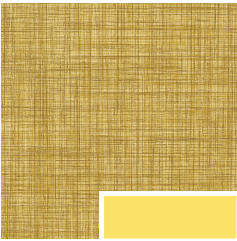
iD Latitude Abstract

26 colors | 6" x 36" | 18" x 18"



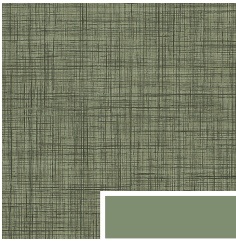
Color Zone PLCZ
Zinnia 7569
VM8 Mr Sunshine *

V1



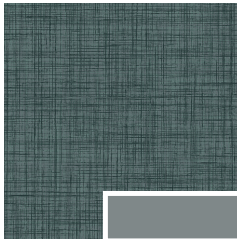
Color Zone PLCZ
Afterglow 7557
TG7 Canary *

V1



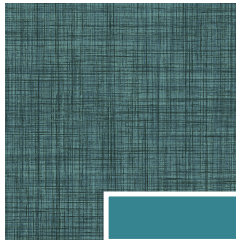
Color Zone PLCZ
Coastline 7556
TH1 Glenhaven *

V1



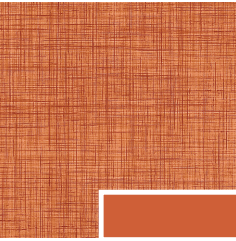
Color Zone PLCZ
Watermist 7554
28 Medium Grey CG *

V1



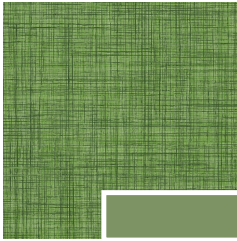
Color Zone PLCZ
Gulfstream 7567
VM5 Dream Teal *

V1



Color Zone PLCZ
Sunset 7558
VM1 Hot Spice *

V1



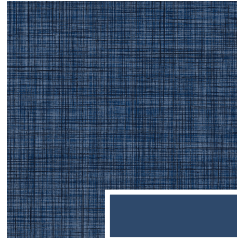
Color Zone PLCZ
Paradise 7568
VN3 Gecko *

V1



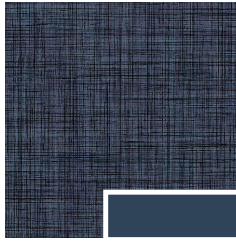
Color Zone PLCZ
Kingston 7555
VN4 Green Vista *

V1



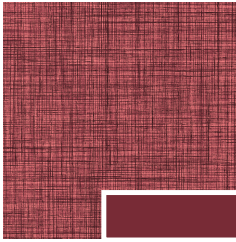
Color Zone PLCZ
Royale 7553
VN5 The Blues *

V1



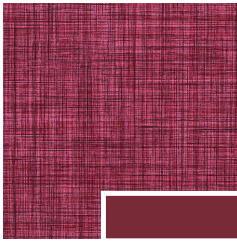
Color Zone PLCZ
Nightfall 7552
TH2 Blue Intensity *

V1



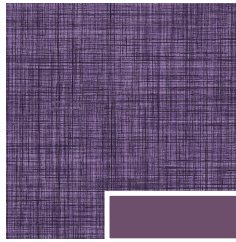
Color Zone PLCZ
Star Crossed 7559
VM3 Misted Plum *

V1



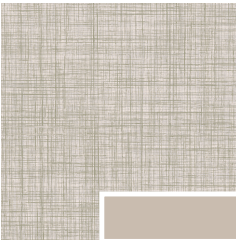
Color Zone PLCZ
Blossom 7570
VM3 Misted Plum *

V1



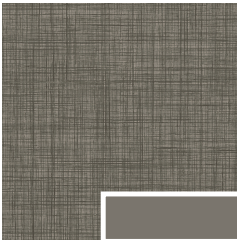
Color Zone PLCZ
Palace 7551
VM2 Shoreline Purple *

V1



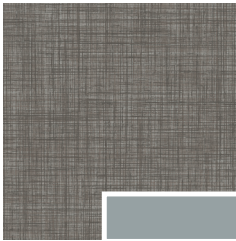
Color Zone PLCZ
Villa White 7563
31 Zephyr CB *

V1



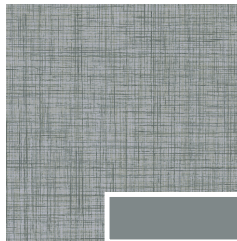
Color Zone PLCZ
Landmark 7565
29 Moon Rock WG *

V1



Color Zone PLCZ
Overcast 7560
38 Pewter CG *

V1



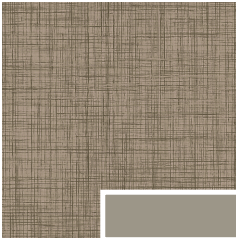
Color Zone PLCZ
Windfresh 7562
28 Medium Grey CG *

V1



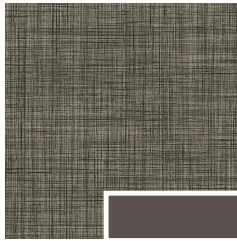
Fine Lines PLFL
Bisque 5101
49 Beige WB *

V1



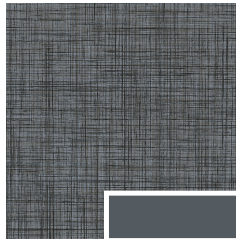
Color Zone PLCZ
Barley 7564
VL1 Harvest Time CB *

V1



Color Zone PLCZ
Harbor 7566
TB1 Peppercorn *

V1



Color Zone PLCZ
Vapor 7561
TA6 Bedrock CG *

V1



Fine Lines PLFL
Taupe 5110
29 Moon Rock WG *

V1



Fine Lines PLFL
Greige 5103
VL1 Harvest Time CB *

V1



Texgrain PLTG
Cool Beige 3542
283 Toast *

V1



Texgrain PLTG
Charcoal 3545
63 Burnt Umber B *

V1



Stria Marble PLSM
Nimbus 5102
32 Pebble WG *

V2

VARIATION SCALE

Color and visual variation is inherent in all modular resilient products. As determined by design intent some patterns and colors can vary slightly or significantly from piece to piece within a pattern. Prior to installation, we recommend reviewing multiple tiles.



V1
slight variation



V2
moderate variation



V3
high variation



Color Name 000
000 Coordinating Color

Wall base coordinates key

* We've identified Color Foundations® neutrals in the following way:
WB (Warm Beige), **CB** (Cool Beige), **WG** (Warm Grey), **CG** (Cool Grey), **B** (Black), **W** (White).

* Suggested colors for finishing borders (wall base).
Coordinated Johnsonite® Accessories are a printed approximation.
Please refer to the Color Guide for accurate color representation.

iD Latitude Stone

16 colors | 12" x 24" | 18" x 18"



Latitude Stone PLST Cristallo 7235
55 Silver Grey WG *

V2



Concrete PLCN Alumin 3515
32 Pebble WG *

V2



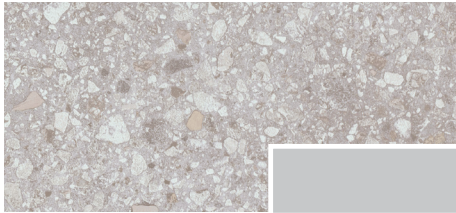
Latitude Stone PLST Chateau 7547
VL2 Whispering Mist CB *

V2



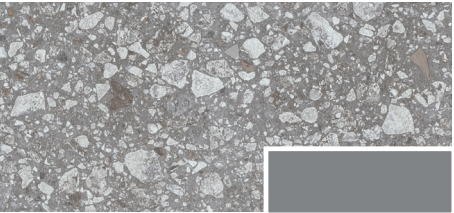
Latitude Stone PLST Elbrus 7501
32 Pebble WG *

V2



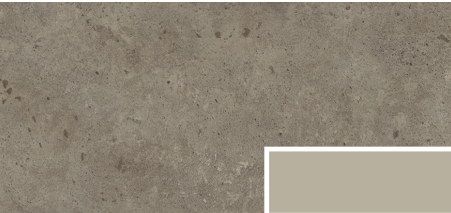
Latitude Stone PLST Lunar Rock 7544
23 Vapor Grey CG *

V2



Latitude Stone PLST Lava Stone 7543
TG3 Iron Mountain CG *

V2



Latitude Stone PLST Prairie 7244
VK8 Sandstorm CB *

V2



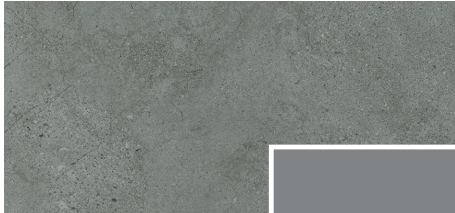
Latitude Stone PLST Luna 7214
49 Beige WB *

V2



Concrete PLCN Gypsum 3511
31 Zephyr CB *

V2



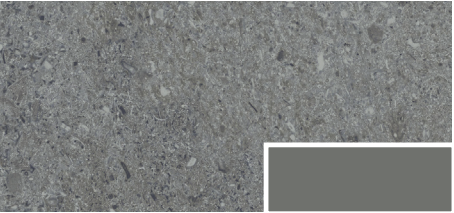
Latitude Stone PLST Hearthstone 7242
TG6 Mink WG *

V2



Latitude Stone PLST Iron Patina 7548
48 Grey WG *

V3



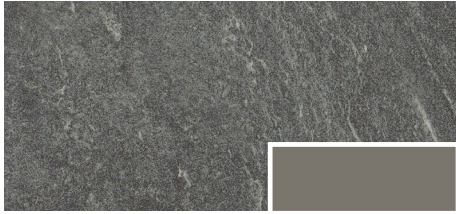
Latitude Stone PLST Gemstone 7550
48 Grey WG *

V2



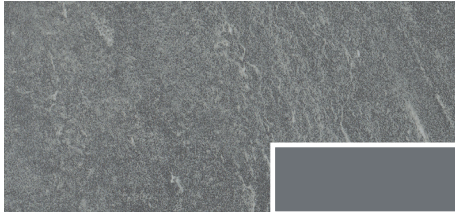
Latitude Stone PLST Weathered Glaze 7549
29 Moon Rock WG *

V3



Latitude Stone PLST Evening Shadow 7546
29 Moon Rock WG *

V2



Latitude Stone PLST Arctic Sky 7545
VL4 Cool Metal CG *

V2



Concrete PLCN Charcoal 3519
20 Charcoal WG *

V2



Color Name 000
000 Coordinating Color

Wall base coordinates key

* We've identified Color Foundations® neutrals in the following way:
WB (Warm Beige), **CB** (Cool Beige), **WG** (Warm Grey), **CG** (Cool Grey), **B** (Black), **W** (White).

* Suggested colors for finishing borders (wall base).
Coordinated Johnsonite® Accessories are a printed approximation.
Please refer to the Color Guide for accurate color representation.

iD Latitude Wood

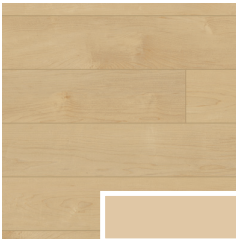
30 colors | 6" x 48"



Latitude Wood PLWD V2
Laurel Oak 3523
TA1 Tannery WB *



Latitude Wood PLWD V2
Golden Oak 7539
TA1 Tannery WB *



Latitude Wood PLWD V2
Pearl Maple 7526
129 Silk WB *



Latitude Wood PLWD V3
Nordic 7533
09 Clay WB *



Latitude Wood PLWD V2
Butternut 7536
09 Clay WB *



Latitude Wood PLWD V2
Crème Oak 3522
22 Pearl CB *



Latitude Wood PLWD V3
Lacewood 7532
24 Grey Haze WG *



Latitude Wood PLWD V2
Chamois Oak 3606
TG5 Macadamia WG *



Latitude Wood PLWD V2
Blanched Pine 5134
32 Pebble WG *



Latitude Wood PLWD V3
Geneva 7530
469 Mystify CG *



Latitude Wood PLWD V2
American Cherry 3305
TA7 Rusty Nail *



Latitude Wood PLWD V2
Ash 3308
130 Sisal *



Latitude Wood PLWD V3
English Walnut 7537
TA1 Tannery WB *



Latitude Wood PLWD V2
Parable 7541
150 Wetlands *



Latitude Wood PLWD V3
Mountain Maple 7534
283 Toast *



Latitude Wood PLWD V2
Vintage Oak 3530
55 Silver Grey WG *



Latitude Wood PLWD V2
Acadia Pine 5136
150 Wetlands *



Latitude Wood PLWD V3
Silver Maple 7535
281 Grizzly CB *



Color Grain PLCG V1
Gibraltar 7514
32 Pebble WG *



Latitude Wood PLWD V3
Suntoned Teak 7523
48 Grey WG *



Latitude Wood PLWD V2
Natural Teak 7524
TA2 Saddlebrook WB *



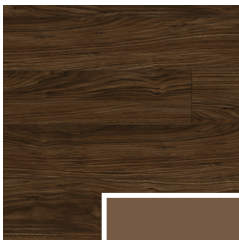
Latitude Wood PLWD V3
European Cherry 3307
TA7 Rusty Nail *



Latitude Wood PLWD V2
Hickory 3405
TA7 Rusty Nail *



Latitude Wood PLWD V3
Autumn Walnut 7538
TA2 Saddlebrook WB *



Latitude Wood PLWD V2
Black Walnut 3401
TA2 Saddlebrook WB *



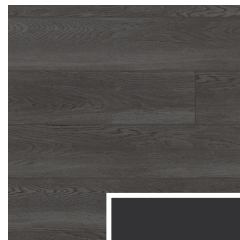
Latitude Wood PLWD V2
Hazelwood 7542
283 Toast *



Latitude Wood PLWD V3
Chandler Oak 7531
80 Fawn CB *



Latitude Wood PLWD V2
Taos Oak 3605
80 Fawn CB *



Latitude Wood PLWD V3
Urban Oak 3603
63 Burnt Umber B *



Latitude Wood PLWD V2
Millennium Oak 7540
TA4 Gateway WG *



Color Name 000
000 Coordinating Color

Wall base coordinates key

* We've identified Color Foundations® neutrals in the following way:
WB (Warm Beige), **CB** (Cool Beige), **WG** (Warm Grey), **CG** (Cool Grey), **B** (Black), **W** (White).

* Suggested colors for finishing borders (wall base).
Coordinated Johnsonite® Accessories are a printed approximation.
Please refer to the Color Guide for accurate color representation.

Tailored by Tarkett™

To help you explore and specify flooring, Tarkett® offers design tools and services that make it easier than ever to find inspiration, research product ideas, and try out personalized flooring concepts to help you create profoundly unique spaces. You can even co-create with one of our expert designers to help you fulfill your vision.



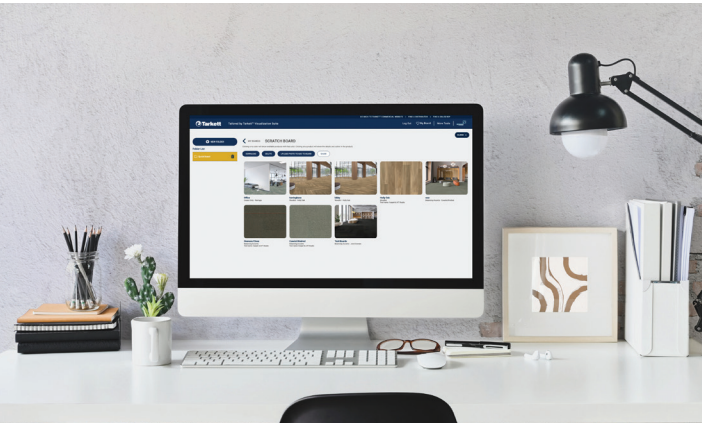
Learn more and find your inspiration here.

Design tools

Choose from an array of sophisticated design tools to help you tailor and preview each flooring layout.

The **Tailored by Tarkett Visualizer Suite** is a user-friendly online platform to help you explore layouts and colorways. With the Visualizer suite, you can:

- Create **project boards** to effortlessly save swatches, collect room scenes, upload photos, and keep all your visuals organized in one convenient place;
- Use our **LVT Studio** to explore our extensive line of colorways—including non-PVC plank and tile—in a variety of commercial environments;
- Complete your ideas with our **Masquerade® Wall Base Visualizer**, which enables you to preview an unlimited selection of high-definition digitally printed wall finishing borders that meet your exact needs.



Of course, your ideas aren't limited to just one type of flooring. That's why—in addition to our LVT and wall base visualizers—our online tools also include visualizers for carpet tile, tufted broadloom, Powerbond® hybrid carpet, and rubber tile.

Design services

Great flooring supports people, inspires creativity, and connects us to our environment. So does great service. That's why we offer a suite of end-to-end design services to help you. Want to add a logo to your floor or a custom corporate message? No problem. Or maybe you're looking for support in the form of professional renderings to help sell your flooring concept. No matter your need, Tarkett experts are here to help you solve your biggest flooring challenges and deliver personalized solutions.

- Let our **Designer on Demand** team create renderings for you. Simply submit your project online and our designers will create beautiful renderings you can proudly share with your clients.
- Our **Imaginations® Personalized Floor Design** program can help you implement more intricate and detailed designs—such as logos and messaging—adding shape, color, and texture into your floor design with tailored cutting and fabrication.



Tarkett Techtonic® delivers unequaled resistance to scratches, abrasions and scuffs.

Every flooring product has a coating, but only Tarkett has Techtonic: a groundbreaking solution that strengthens the durability of LVT, giving you better performance for the price. By mixing rugged protection with a beautiful matte finish, Techtonic keeps your floors’ surfaces looking better and lasting longer.



Resists scratches 40% better

You'll never have to choose between replacing a new floor or living with the damage.

Just one exposed nail in the foot of a chair can scratch a new floor and produce whitening. In a series of laboratory experiments utilizing a diamond-tipped Taber Scratch tool, Techtonic performed significantly better than the industry market leader—withstanding greater pressure without scratching or scratch whitening.



18% more protection against abrasions

Now you can move furniture with more freedom—and less concern.

Surface sheen is worn away by repetitive actions in high-traffic areas, such as the movement of chairs and tables. By protecting surfaces, Techtonic preserves not just their sheen, but your peace of mind.



Best-in-class scuff resistance

Spend less time cleaning black marks (and more years enjoying spotless surfaces).

Those black marks from dragging shoes and chair casters? They're scuff marks caused by friction. No product on the market fights them better than Techtonic—a solution that keeps your floors performing better, year after year.



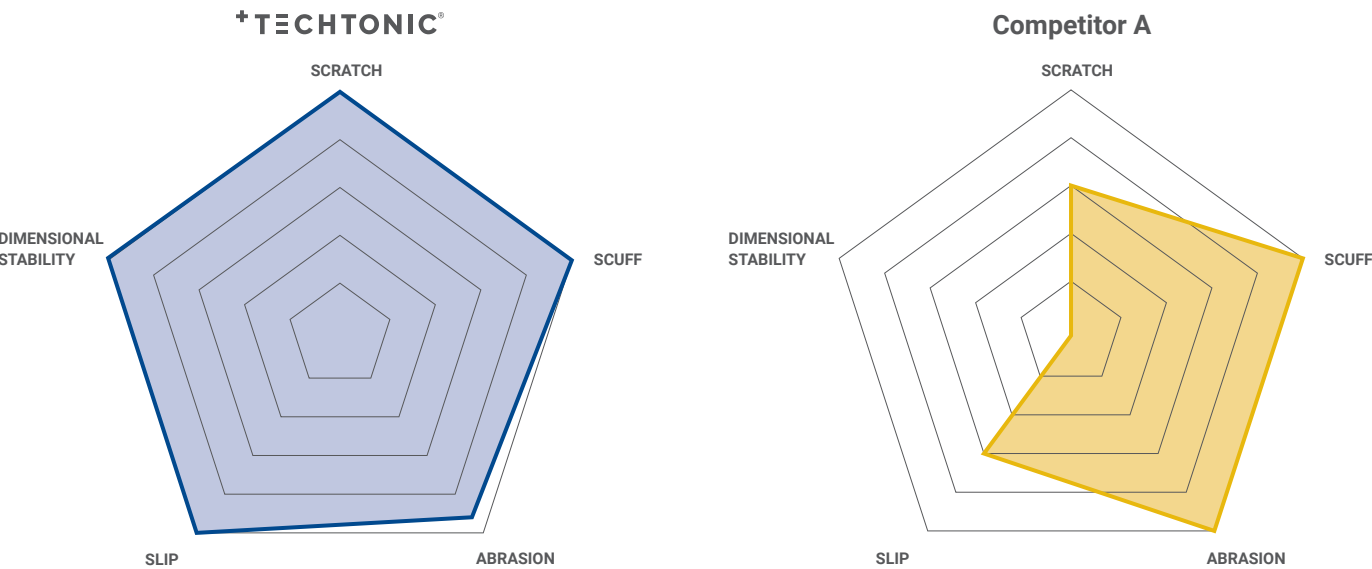
Improved stain defense

Momentary mishaps shouldn't have permanent effects.

Techtonic's polyurethane coating provides an advanced level of security against stains, reducing the chances of damaged flooring (and expensive cleaning).

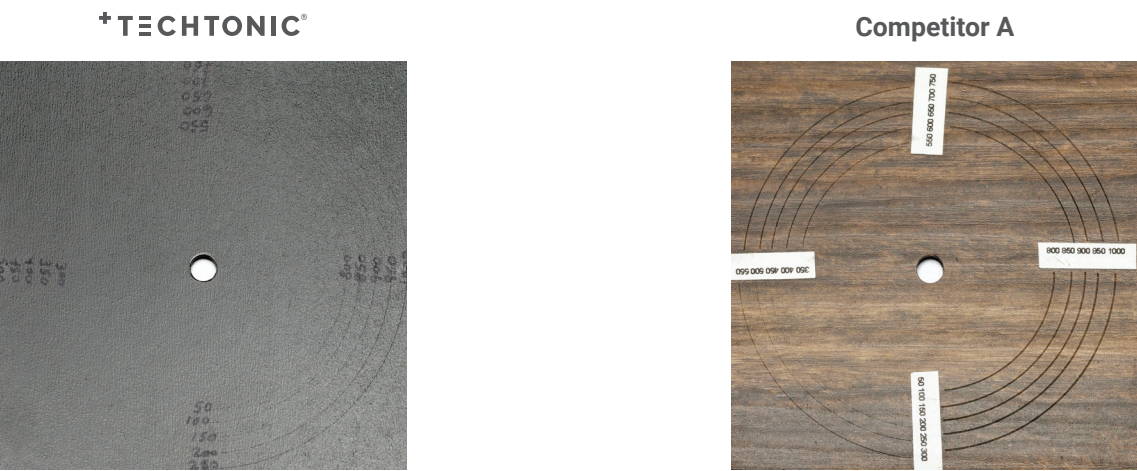
Techtonic outperforms the industry leader.

Applied to LVT made in Florence, Alabama, Techtonic offers performance in the top of its class. In a series of laboratory tests, Techtonic-protected LVT floors repeatedly outperformed our #1 market-leading competitor: matching their strength against scuffing and abrasion, while exceeding their resistance to scratching, slipping and dimensional stability.



Lab tests showed results—not scratches.

A diamond-tipped Taber Scratch tool was used to test the performance of Techtonic against that of the industry's leading product protection. After being subjected to equivalent Taber Scratch protocol, the competitor's sample displayed more and deeper visible scratches than Techtonic.*



Scratch whitening is easier to see on dark surfaces than light ones. But even when we scratch-tested our darkest matte finish against the competitor's lighter wood grain pattern, Techtonic still performed better.

*Based on Tarkett internal testing of Techtonic against multiple competitors. To ensure accuracy, experiments were conducted in more than one laboratory.

Tarkett Solution SPECtrum™

At Tarkett, we believe in placing people in the center of every space. So we’ve developed a portfolio of products designed to work together both functionally and aesthetically, helping you create more supportive spaces that maximize return on investment. Our full palette of colors, patterns and textures is coordinated to work together visually across product categories—creating the perfect balance for people, planet, and performance.



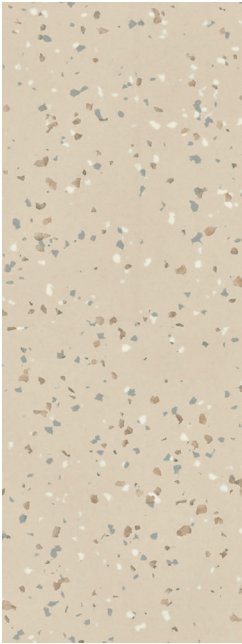
Johnsonite Millwork® Wall Base
Diplomat 293 Peacock



Johnsonite Millwork Wall Base
Inflection 292 Vaporize



Johnsonite Millwork Wall Base
Silhouette 31 Zephyr



iQ® Eminent™
928 Dusty Sand

Color may vary from actual swatch. To order a sample and to learn more, please visit tarkett.com.



iD Latitude Wood LVT
Butternut PLWD 7536



iD Latitude Stone LVT
Iron Patina PLST 7548



iD Latitude Abstract LVT
Watermist PLCZ 7554



iD Latitude Abstract LVT
Villa White PLCZ 7563



iD Latitude Abstract LVT
Coastline PLCZ 7556



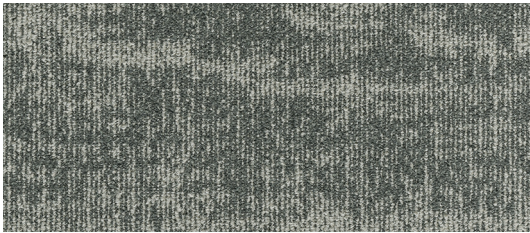
iD Latitude Wood LVT
Autumn Walnut PLWD 7538



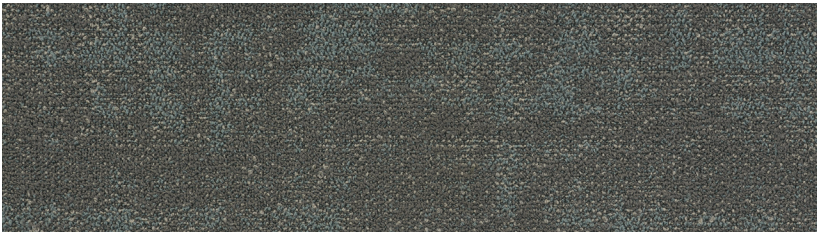
iD Latitude Wood LVT
Lacewood PLWD 7532



iD Latitude Stone LVT
Chateau PLST 7547



Powerbond® hybrid carpet & carpet tile
Tundra Flower™ 11663 Sea Gem 52606



Powerbond hybrid carpet & carpet tile
Earthbound 11573 Streamside 65402

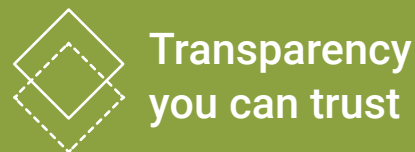


Every step matters™

Tarkett's holistic approach to sustainability is woven into the fabric of how we do business and sits at the heart of our day-to-day decision making.

For decades, we've been scrutinizing every detail of our business for its impact on resources like soil, water, and air—because when you're trailblazing a more sustainable future, **every step matters**.

These three values help us stay the course when it comes to sustainability.



Transparency you can trust

We subject our products to relentless scientific scrutiny and third-party testing, then provide customers with radical transparency about our materials, operations, and corporate business practices.



Circular economy

We're committed to creating a circular economy where nothing goes to waste by designing products with their end of life in mind. This means always interrogating the health, safety, environmental, and social impacts of our materials.



Healthy impacts

We've made material choices across our entire portfolio that support better indoor air quality and better outcomes for every living thing. Responsible flooring design not only improves aesthetics; it directly impacts the health of the people who occupy interior spaces.

The **proof** is in the numbers.



Holistic approach

94%

of our raw materials are third-party assessed for their impact on human and environmental health based on Cradle to Cradle criteria.

69%

of raw materials are abundant, rapidly renewable, or recycled.

13

zero-waste-to-landfill manufacturing plants

2.1 million lb.

of flooring recycled in 2024 in North America



Certifications you can trust

2011

started working with EPEA to integrate Cradle to Cradle principles into every facet of our business

2013

first commercial flooring Certified **Asthma & Allergy Friendly**®

2022

Powerbond® RS is the first soft surface product in the industry to be Certified **Asthma & Allergy Friendly**®.



Transparency you can trust

100ppm

raw materials content revealed down to 100 parts per million

When most manufacturers reveal raw materials content down to just 1,000 ppm, there's simply no contest.

We've been providing Material Health Statements since 2013 to give you peace of mind about the content of our products.



Setting the standard

99%

of flooring solutions have low VOC emission levels—10x lower than the most stringent world standards.

100%

ortho-phthalate-free vinyl production; first company to eliminate ortho-phthalates from all products



Global excellence

2010

first flooring manufacturer to join the UN Global Compact

2016

Began reporting to the Carbon Disclosure Project (CDP). In 2025, Tarkett scored A, the CDP management level.

2020

first assessment by EcoVadis. In 2024, Tarkett's score of 81/100 earned us a Platinum medal and placed us in the top 1% of rated companies.

2023

Climate target approved by SBTi (Science Based Targets initiative). Targeting 30% GHG emissions reduction and increase of 30% recycled content across all products by 2030.

At Tarkett, social and environmental responsibility aren't add-ons. They're woven, stamped, and sealed into everything we do. **But more importantly, we don't just say this, we prove it.**



Transparency documentation

At Tarkett, transparency, social responsibility and environmental stewardship aren't add-ons—they're part of everything we do. By partnering with ecomedes and mindful MATERIALS, we make it easy for you to explore our sustainable flooring product options, their product certifications, green building systems and federal standards support documents. Visit [Tarkett.ecomedes.com](https://www.tarkett.com/ecomedes) to learn more.



Sustainability attributes

iD LATITUDE LUXURY VINYL TILE

Product emissions decarbonization:

ClimeCo Certified Product™ decarbonization program available upon request.

Healthy materials:

94% raw materials third-party assessed; ortho-phthalate-free

Indoor air quality:

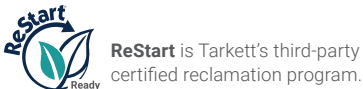
FloorScore® certified; Meets CA CDPH Section 01350 v1.2; Certified **Asthma & Allergy Friendly**®

Transparency documents available:

Product-specific EPD

Responsible end of use management:

Part of Tarkett's ReStart® take-back and recycling program

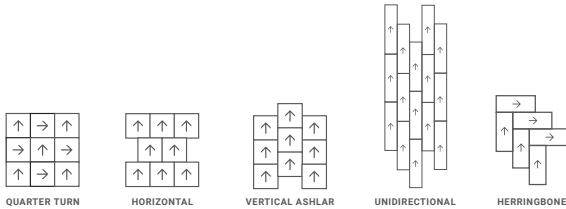


To learn more about the **ReStart** program, scan the QR code or go to: commercial.tarkett.com/Restart.

The Asthma & Allergy Friendly® Certification Mark is a Registered Certification Mark of Allergy Standards Ltd.

Specifications

Style name/number:	iD Latitude Abstract
Classification:	ASTM F1700, Class III, Type B
Warranty:	20 years
Tile sizes:	6" x 36": All styles 18" x 18": Color Zone, Fine Lines, TexGrain
Sample sizes:	6" x 6": All styles 6" x 36": Stria Marble 18" x 18": Color Zone, Fine Lines, TexGrain
Carton size:	6" x 36"
Quantity:	24 tiles per carton, 36 sq. ft. per carton
Weight:	36 lb. per carton, 66 carton per pallet
Carton size:	18" x 18"
Quantity:	20 tiles per carton, 45 sq. ft. per carton
Weight:	45 lb. per carton, 45 carton per pallet
Total thickness:	0.120" (3mm)
Wear layer thickness:	20 mil
Finish:	Techtonic
Edge treatment:	Square
Emboss:	Standard emboss
Colors available:	26
Installation method:	Glue down
Installation options:	6" x 36": unidirectional, herringbone 18" x 18": quarter turn, horizontal ashlar, vertical ashlar



+TECHTONIC®

Testing		
Static load:	ASTM F970	250 psi, ≤0.005 inches
Residual indentation:	ASTM F1914	Passes
Slip resistance:	ASTM D2047	≥0.5 SCOF
Flammability:	ASTM E648	≥0.45 W/cm ² (Class 1)
Smoke density:	ASTM E662	Passes
Chemical resistance:	ASTM F925	Passes
Resistance to light:	ASTM F1515	ΔE≤8
Resistance to heat:	ASTM F1514	ΔE≤8
Dimensional stability:	ASTM F2199	Passes
Flexibility:	ASTM F137	Passes

Adhesives for LVT products

A brief comparison of adhesive products recommended for use with Tarkett LVT, in multiple installation scenarios

Adhesive	Moisture RH	
RollSmart™	95%	Allows immediate occupancy
975 Two-Part Urethane Adhesive	90%	For install with heavy point loads, intense direct sunlight, topical moisture, and extreme temperature variation
959HM High Moisture Subfloor Adhesive	99% 95%	New concrete 2+ year-old concrete
996 Two-Part Epoxy Adhesive	90%	For installations with heavy point loads, intense direct sunlight, topical moisture, and extreme temperature variation. DO NOT use over wood or steel substrates.

Construction option

LVT product	Recycled content pre-consumer	Ortho-phthalate-free	FloorScore certified
iD Latitude	45%	Yes	Yes

On the cover:

Color Grain PLCG Gibraltar 7514, **Color Zone PLCZ** Watermist 7554 | 6" x 36" unidirectional installation
Latitude Stone PLST Gemstone 7550 | 12" x 24" vertical ashlar installation

Tarkett North America

30000 Aurora Road, Solon, Ohio 44139
800.899.8916 | tarkett.com

For more accurate color and pattern representation, we suggest you visit an authorized Tarkett dealer to view an actual product sample. All third-party trademarks are the property of their respective owners.

©Tarkett North America 31599500017 05/2025

