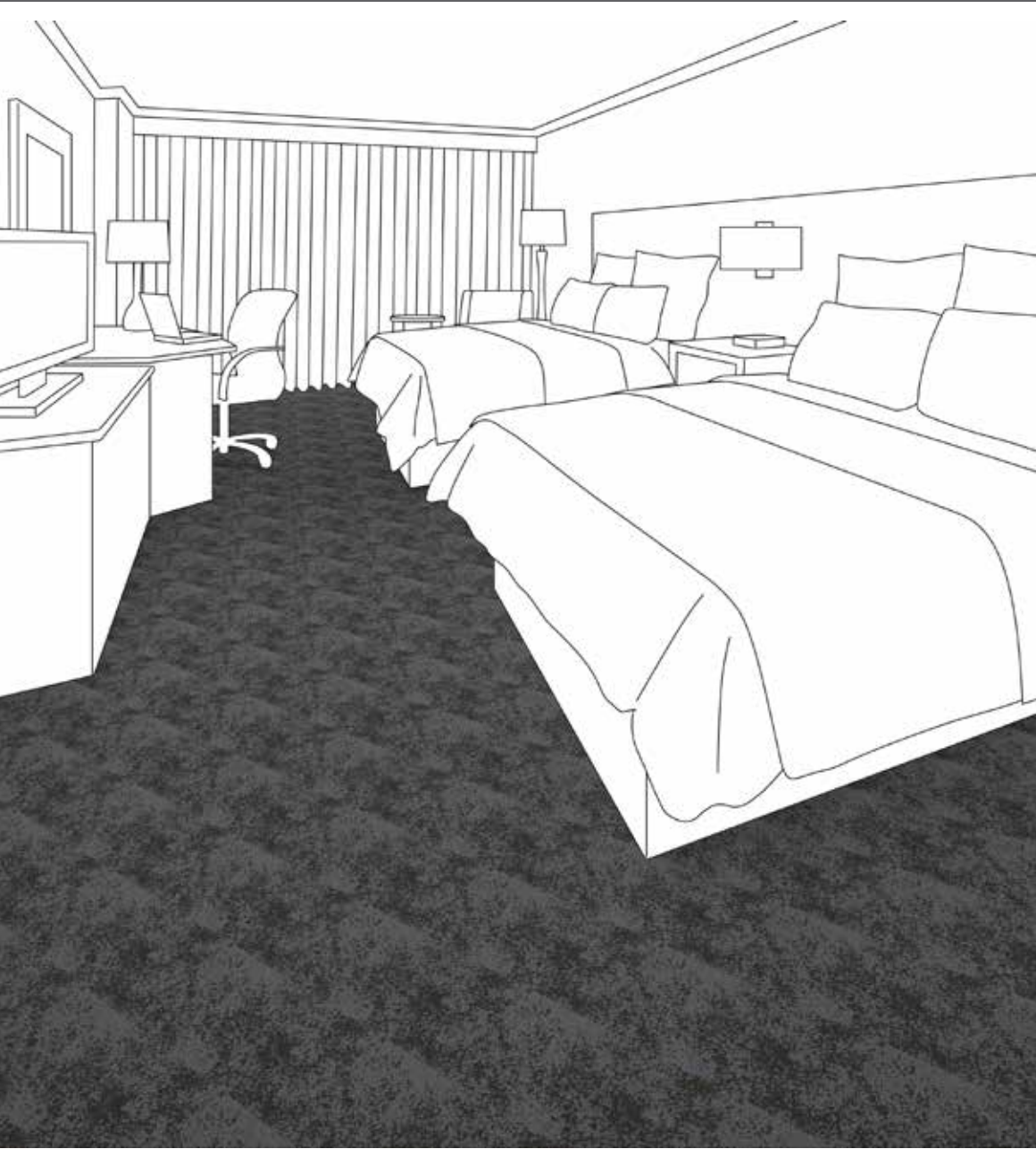


CHOICE HOTELS

Comfort Inn- Rise and Shine



CHOICE HOTELS

Comfort Inn, City Scheme Overview



Manufacturer: Tarkett
 Address: 285 Kraft Drive
 Dalton, GA 30721
 Phone: 706.277.3000
 Contact: Jackie Passaro
 Jackie.Passaro@tarkett.com
 Web: www.tarketthospitality.com

Choose Tarkett

- + Approved Styles
- + Lowest Pricing
- + Fast Delivery
- + 10-Year Warranty
- + Broadloom Carpet
- + Lextron Solution-Dyed Nylon



- Product Type: Broadloom Guest Rooms
- Choice Item: CPT-001-A
- Style Number: I0732
- Color Number: 792
- Specs: 32 oz. - 12' W
- Pattern Repeat: 24" x 24"



- Product Type: Carpet Tile Guest Rooms
- Choice Item: CPT-002-A
- Style Number: A0001 Evoke
- Color Number: Millstone
- Specs: 25 oz.
- Modular Tile Size: 24" x 24"



- Product Type: Resilient Wall Base Lobby
- Choice Item: CITY-RB-003
- Millwork Reveal Wallbase
- Style Number: MW-121-F
- Color: 121 Cement
- Specs: 4.25" H x .25" W x 8' L



121 Cement



- Product Type: Resilient Wall Base Corridor
- Choice Item: CITY-RB-02
- Millwork Reveal Wallbase
- Style Number: MW-TA5-F
- Color: TA5 Colonial Grey
- Specs: 4.25" H x .25" W x 8' L



TA5 Colonial Grey

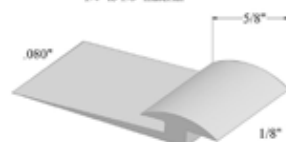


32 Pebble

- Product Type: Resilient Wall Base Guest Rooms
- Choice Item: CITY-RB-01
- Millwork Reveal Wallbase
- Style Number: MW-32-F
- Color: 32 Pebble
- Specs: 4.25" H x .25" W x 8' L



SLT-XX-A
1/4" to 1/8" material



SLT-XX-B
.080" to 1/8" material



SLT-XX-C
.080" to 1/4" material

- Product Type: Thresholds
- Slim Line Transitions
- Style Number: SLT-32
- Color: 32 Pebble
- Sizes: A , B or C



32 Pebble

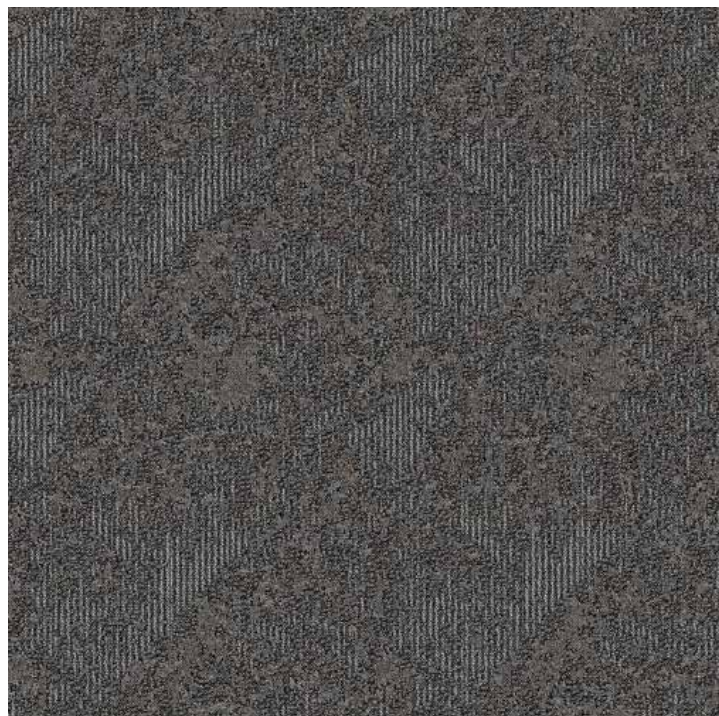
CITY SCHEME

GUEST ROOM



Manufacturer: Tarkett
Address: 285 Kraft Drive
Dalton, GA 30721
Phone: 706.277.3000
Contact: Jackie Passaro
Jackie.Passaro@tarkett.com
Web: www.tarkett.com

Description: Guest Room
Choice Item: CPT-001-A
Style Number: I0732 Broadloom
Color: 792
Width: 12'
Repeat: 24"W x 24"L
Type: DYN Loop Tip-Sheared
Content: Lextron Enviro-Green SD Nylon
Weight: 32 oz. tufted face weight
Primary Backing: Woven Polypropylene
Secondary Backing: Action Bac
Pile Height: .250" High, .187" Med, .062" Low
Gauge: 1/10"
Stitches Per Sq Inch: 10
Dye Method: Solution Dyed
Installation Method: Broadloom
Flame Requirements: Meets or exceeds requirement Class 1



Instructions:

- Installer to provide all materials and equipment for complete installation, seaming diagrams, and full carpet layouts for all areas per manufacturer's recommendation.
- All quantities to be verified by installer.
- All materials and methods of construction must comply with all local fire and life safety codes for use in hotels and other public spaces, and Choice Brand Standards.

No printed material contained here-in may be reproduced without written permission of Tarkett Hospitality. Due to variations in monitors, printers and light sources, we cannot guarantee that the colors in this image will be an exact match to your colors. 285 Kraft Drive Dalton, GA 30721

CITY SCHEME

GUEST ROOM



- Product Type: Guest Room
- Choice Item: CPT-001-A
- Style Number: 10732
- Color Number: 792
- Specs: 32 oz. - 12' W

 **Tarkett** *Hospitality*

CITY SCHEME

GUEST ROOM



Manufacturer:	Tarkett
Address:	285 Kraft Drive Dalton, GA 30721
Phone:	706.277.3000
Contact:	Jackie Passaro Jackie.Passaro@tarkett.com
Web:	www.tarkett.com

Description:	Guest Room
Choice Item:	CPT-002-A
Style Number:	A0001 Evoke
Color:	31906 Millstone
Size:	24" x 24" Tile
Type:	Tufted Patterned Symtex®
Content:	Dynex® SD Nylon
Weight:	25 oz. tufted face weight
Primary Backing:	ethos® Modular with Omnicoat Technology™
Pile Height:	0.234" Average
Gauge:	1/10"
Stitches Per Sq Inch:	7.5
Dye Method:	Solution Dyed
Installation Method:	Vertical ashlar
Flame Requirements:	Meets or exceeds requirement Class 1



Instructions:

- Installer to provide all materials and equipment for complete installation, seaming diagrams, and full carpet layouts for all areas per manufacturer's recommendation.
- All quantities to be verified by installer.
- All materials and methods of construction must comply with all local fire and life safety codes for use in hotels and other public spaces, and Choice Brand Standards.

No printed material contained here-in may be reproduced without written permission of Tarkett Hospitality. Due to variations in monitors, printers and light sources, we cannot guarantee that the colors in this image will be an exact match to your colors. 285 Kraft Drive Dalton, GA 30721

CITY SCHEME

GUEST ROOM



- Product Type: Guest Room
- Choice Item: CPT-002-A
- Style Number: A0001 Evoke
- Color Number: 31906 Millstone
- Specs: 25 oz.
- Modular Tile Size: 24" x 24"

 **Tarkett** *Hospitality*

CHOICE HOTELS

Comfort Inn, Sea Scheme Overview



Manufacturer: Tarkett
 Address: 285 Kraft Drive
 Dalton, GA 30721
 Phone: 706.277.3000
 Contact: Jackie Passaro
 Jackie.Passaro@tarkett.com
 Web: www.tarkethospitality.com

Choose Tarkett

- + Approved Styles
- + Lowest Pricing
- + Fast Delivery
- + 10-Year Warranty
- + Broadloom Carpet
- + Lextron Solution-Dyed Nylon



- Product Type: Broadloom Guest Rooms
- Choice Item: CPT-001B
- Style Number: 10632
- Color Number: 692
- Specs: 32 oz. - 12' W
- Pattern Repeat: 24" x 24"



- Product Type: Carpet Tile Guest Rooms
- Choice Item: CPT-002B
- Style Number: 11016 Aggregate
- Color Number: 28302 Native Asphalt
- Specs: 13 oz.
- Modular Tile Size: 24" x 24"



- Product Type: Resilient Wall Base Lobby
- Choice Item: SEA-RB-003
- Millwork Reveal Wallbase
- Style Number: MW-121-F
- Color: 121 Cement
- Specs: 4.25" H x .25" W x 8' L



121 Cement



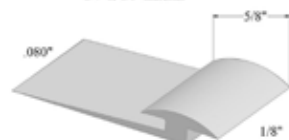
- Product Type: Resilient Wall Base Corridor
- Choice Item: SEA-RB-002
- Millwork Reveal Wallbase
- Style Number: MW-TA5-F
- Color: TA5 Colonial Grey
- Specs: 4.25" H x .25" W x 8' L



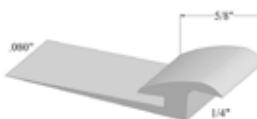
TA5 Colonial Grey



SLT-XX-A
1/4" to 1/8" material



SLT-XX-B
.080" to 1/8" material



SLT-XX-C
.080" to 1/4" material

- Product Type: Thresholds
- Slim Line Transitions
- Style Number: SLT-32
- Color: 32 Pebble
- Sizes: A , B or C



32 Pebble

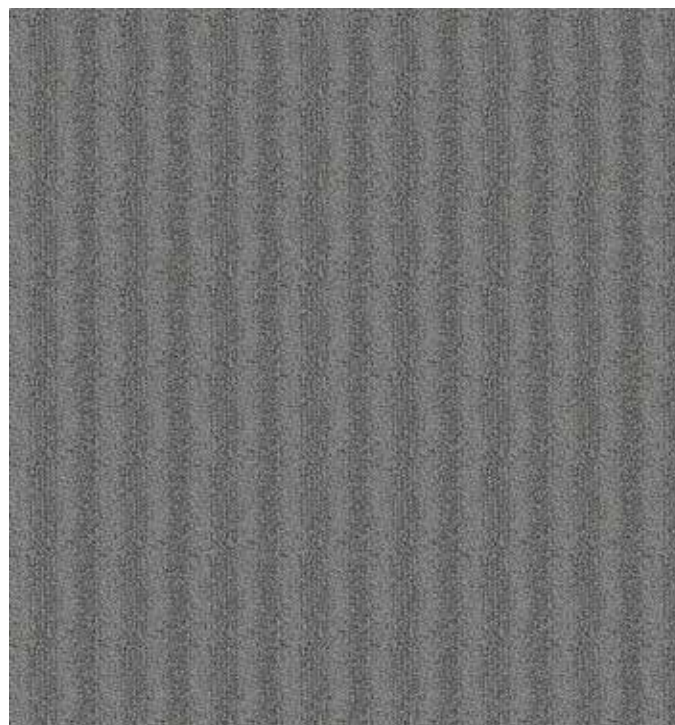
SEA SCHEME

GUEST ROOM



Manufacturer: Tarkett
Address: 285 Kraft Drive
Dalton, GA 30721
Phone: 706.277.3000
Contact: Jackie Passaro
Jackie.Passaro@tarkett.com
Web: www.tarkett.com

Description: Guest Room
Choice Item: CPT-001B
Style Number: I0632 Broadloom
Color: 692
Width: 12'
Repeat: 24"W x 24"L
Type: DYN Loop Tip-Sheared
Content: Lextron Enviro-Green SD Nylon
Weight: 32 oz. tufted face weight
Primary Backing: Woven Polypropylene
Secondary Backing: Action Bac
Pile Height: .250" High, .187" Med, .062" Low
Gauge: 1/10"
Stitches Per Sq Inch: 10
Dye Method: Solution Dyed
Installation Method: Broadloom
Flame Requirements: Meets or exceeds
requirement Class 1



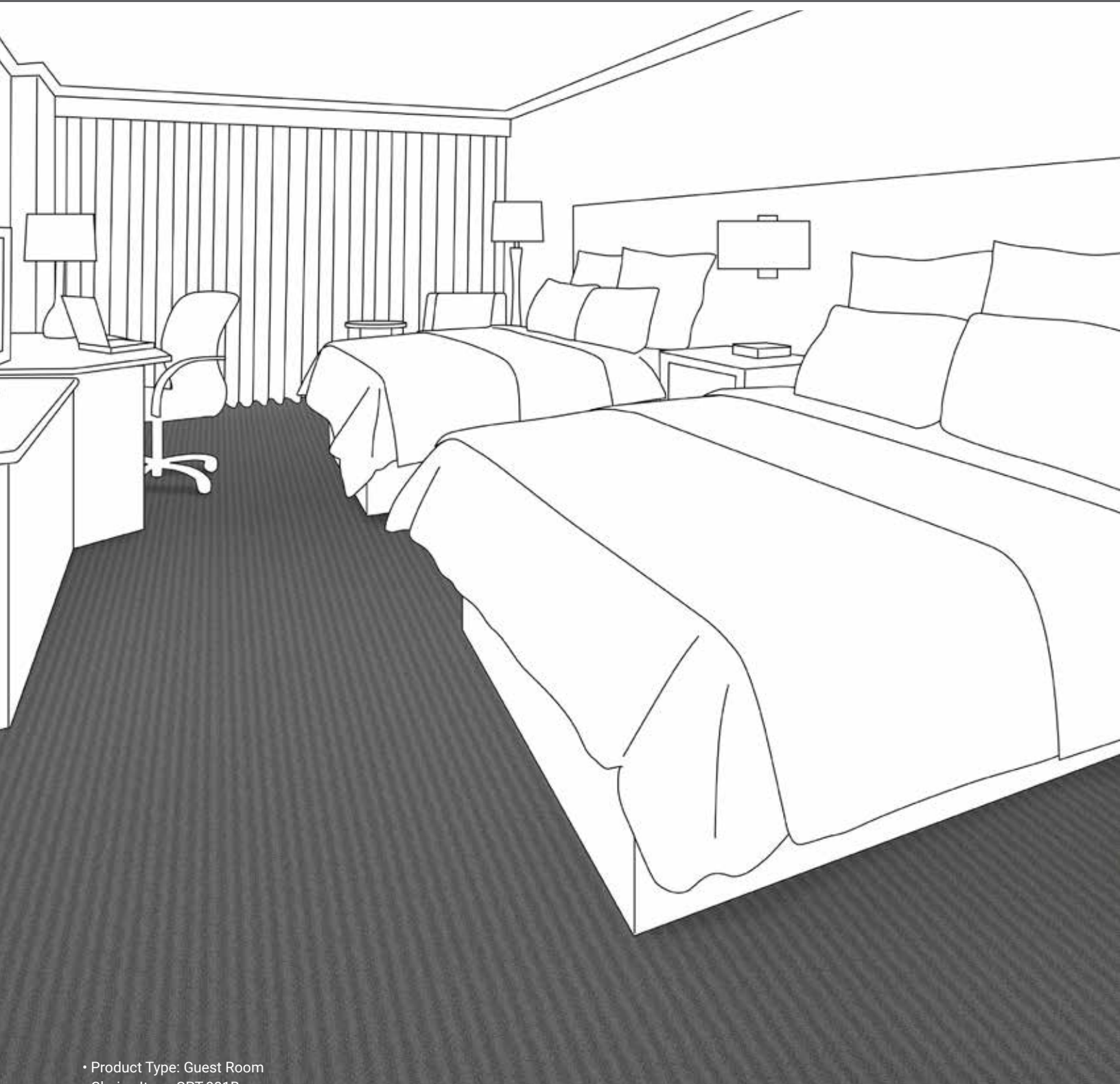
Instructions:

- Installer to provide all materials and equipment for complete installation, seaming diagrams, and full carpet layouts for all areas per manufacturer's recommendation.
- All quantities to be verified by installer.
- All materials and methods of construction must comply with all local fire and life safety codes for use in hotels and other public spaces, and Choice Brand Standards.

No printed material contained here-in may be reproduced without written permission of Tarkett Hospitality. Due to variations in monitors, printers and light sources, we cannot guarantee that the colors in this image will be an exact match to your colors. 285 Kraft Drive Dalton, GA 30721

SEA SCHEME

GUEST ROOM



- Product Type: Guest Room
- Choice Item: CPT-001B
- Style Number: I0632
- Color Number: 692
- Specs: 32 oz. - 12' W

 **Tarkett** Hospitality

SEA SCHEME

GUEST ROOM



Manufacturer: Tarkett
Address: 285 Kraft Drive
Dalton, GA 30721
Phone: 706.277.3000
Contact: Jackie Passaro
Jackie.Passaro@tarkett.com
Web: www.tarkett.com

Description: Guest Room
Choice Item: CPT-002B
Style Number: 11016 Aggregate
Color: 28302 Native Asphalt
Size: 24" x 24" Tile
Type: Stratatec® Patterned Loop
Content: Aquafil ECONYL® Nylon with Recycled Content
Primary Backing: ethos® Modular with Omnicoat Technology™,
Flex-Aire Modular® Cushion
Pile Height: .250" High, .187" Med, .062" Low
Gauge: 5/64"
Stitches Per Sq Inch: 10
Dye Method: Solution Dyed
Installation Method: Monolithic
Flame Requirements: Meets or exceeds
requirement Class 1

Instructions:

- Installer to provide all materials and equipment for complete installation, seaming diagrams, and full carpet layouts for all areas per manufacturer's recommendation.
- All quantities to be verified by installer.
- All materials and methods of construction must comply with all local fire and life safety codes for use in hotels and other public spaces, and Choice Brand Standards.

No printed material contained here-in may be reproduced without written permission of Tarkett Hospitality. Due to variations in monitors, printers and light sources, we cannot guarantee that the colors in this image will be an exact match to your colors. 285 Kraft Drive Dalton, GA 30721



SEA SCHEME

GUEST ROOM



- Product Type: Guest Room
- Choice Item: CPT-002B
- Style Number: 11016 Aggregate
- Color Number: 28302 Native Asphalt
- Specs: 13 oz.
- Modular Tile Size: 24" x 24"

 **Tarkett** *Hospitality*

CHOICE HOTELS

Comfort Inn, Sun Scheme Overview



Manufacturer: Tarkett
 Address: 285 Kraft Drive
 Dalton, GA 30721
 Phone: 706.277.3000
 Contact: Jackie Passaro
 Jackie.Passaro@tarkett.com
 Web: www.tarketthospitality.com

Choose Tarkett

- + Approved Styles
- + Lowest Pricing
- + Fast Delivery
- + 10-Year Warranty
- + Broadloom Carpet
- + Lextron Solution-Dyed Nylon



- Product Type: Broadloom Corridor
- Choice Item: CPT-001C
- Style Number: I0532
- Color Number: 592
- Specs: 32 oz. - 12' W
- Pattern Repeat: 48" x 48"



- Product Type: Resilient Wall Base Corridor
- Choice Item: SUN-RB-02
- Millwork Reveal Wallbase
- Style Number: MW-TA5-F
- Color: TA5 Colonial Grey
- Specs: 4.25" H x .25" W x 8' L



- Product Type: Resilient Wall Base Guest Room
- Choice Item: SUN-RB-01
- Millwork Reveal Wallbase
- Style Number: MW-32-F
- Color: 32 Pebble
- Specs: 4.25" H x .25" W x 8' L



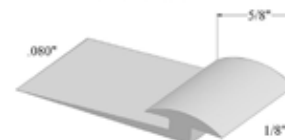
TA5 Colonial Grey



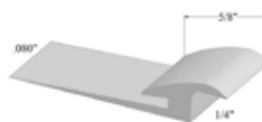
32 Pebble



SLT-XX-A
1/4" to 1/8" material



SLT-XX-B
.080" to 1/8" material



SLT-XX-C
.080" to 1/4" material

- Product Type: Thresholds
- Slim Line Transitions
- Style Number: SLT-32
- Color: 32 Pebble
- Sizes: A , B or C



32 Pebble



- Product Type: Resilient Wall Base Lobby
- Choice Item: SUN-RB-003
- Millwork Reveal Wallbase
- Style Number: MW-121-F
- Color: 121 Cement
- Specs: 4.25" H x .25" W x 8' L



121 Cement

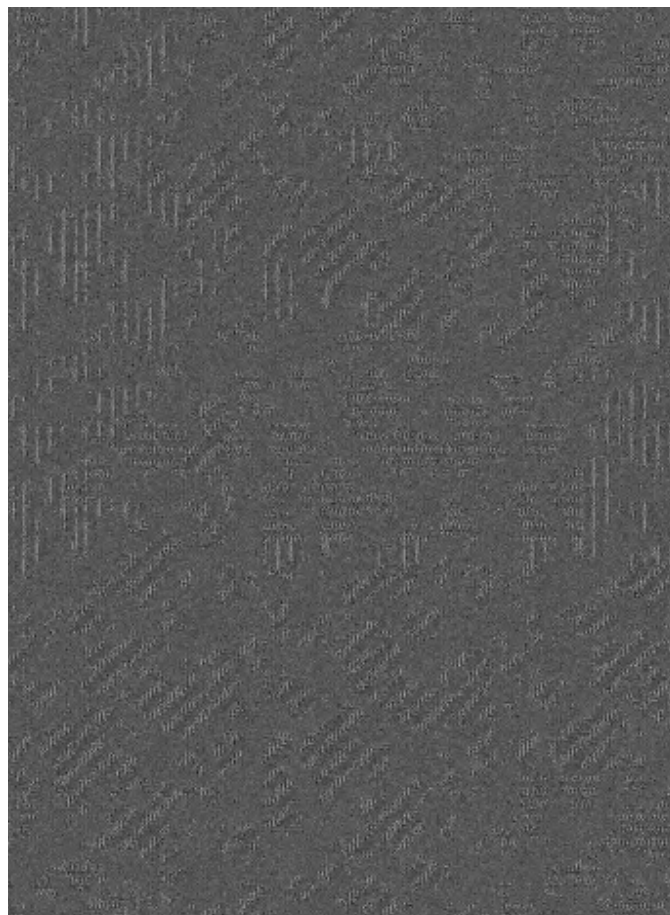
SUN SCHEME

GUEST ROOM



Manufacturer: Tarkett
Address: 285 Kraft Drive
Dalton, GA 30721
Phone: 706.277.3000
Contact: Jackie Passaro
Jackie.Passaro@tarkett.com
Web: www.tarkett.com

Description: Guest Room
Choice Item: CPT-001C
Style Number: I0532
Color: 592
Width: 12'
Repeat: 48"W x 48"L
Type: DYN Loop Tip-Sheared
Content: Lextron Enviro-Green SD Nylon
Weight: 32 oz. tufted face weight
Primary Backing: Woven Polypropylene
Secondary Backing: Action Bac
Pile Height: .250" High, .187" Med, .062" Low
Gauge: 1/10"
Stitches Per Sq Inch: 10
Dye Method: Solution Dyed
Installation Method: Broadloom
Flame Requirements: Meets or exceeds requirement Class 1



Instructions:

- Installer to provide all materials and equipment for complete installation, seaming diagrams, and full carpet layouts for all areas per manufacturer's recommendation.
- All quantities to be verified by installer.
- All materials and methods of construction must comply with all local fire and life safety codes for use in hotels and other public spaces, and Choice Brand Standards.

No printed material contained here-in may be reproduced without written permission of Tarkett Hospitality. Due to variations in monitors, printers and light sources, we cannot guarantee that the colors in this image will be an exact match to your colors. 285 Kraft Drive Dalton, GA 30721

SUN SCHEME

GUEST ROOM



- Product Type: Guest Room
- Choice Item: CPT-001C
- Style Number: 10532
- Color Number: 592
- Specs: 32 oz. - 12' W

 **Tarkett** *Hospitality*