



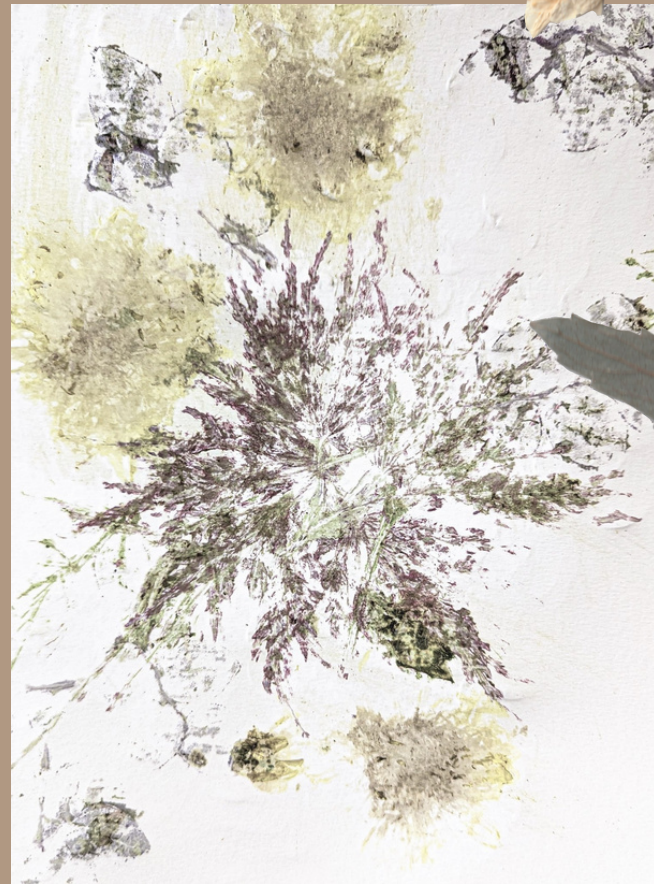
edge of summer



TREND EDIT



As summer comes to an end and we edge into fall, nature's canvas transforms. Colors fade from the vibrant energy of summer to the more subdued and cozy warmth of early autumn, evoking a sense of nostalgia and comfort. Inspired by the preservation of the last delights of summer, the Edge of Summer Collection embraces and celebrates the natural colors of fading fauna, earthen tones, and reimagined heritage patterns, capturing the essence and unique beauty of this seasonal change.



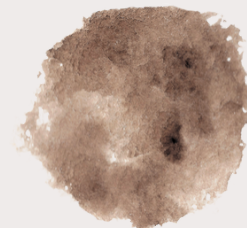
IN3285





AX1924-9

AX2821-7

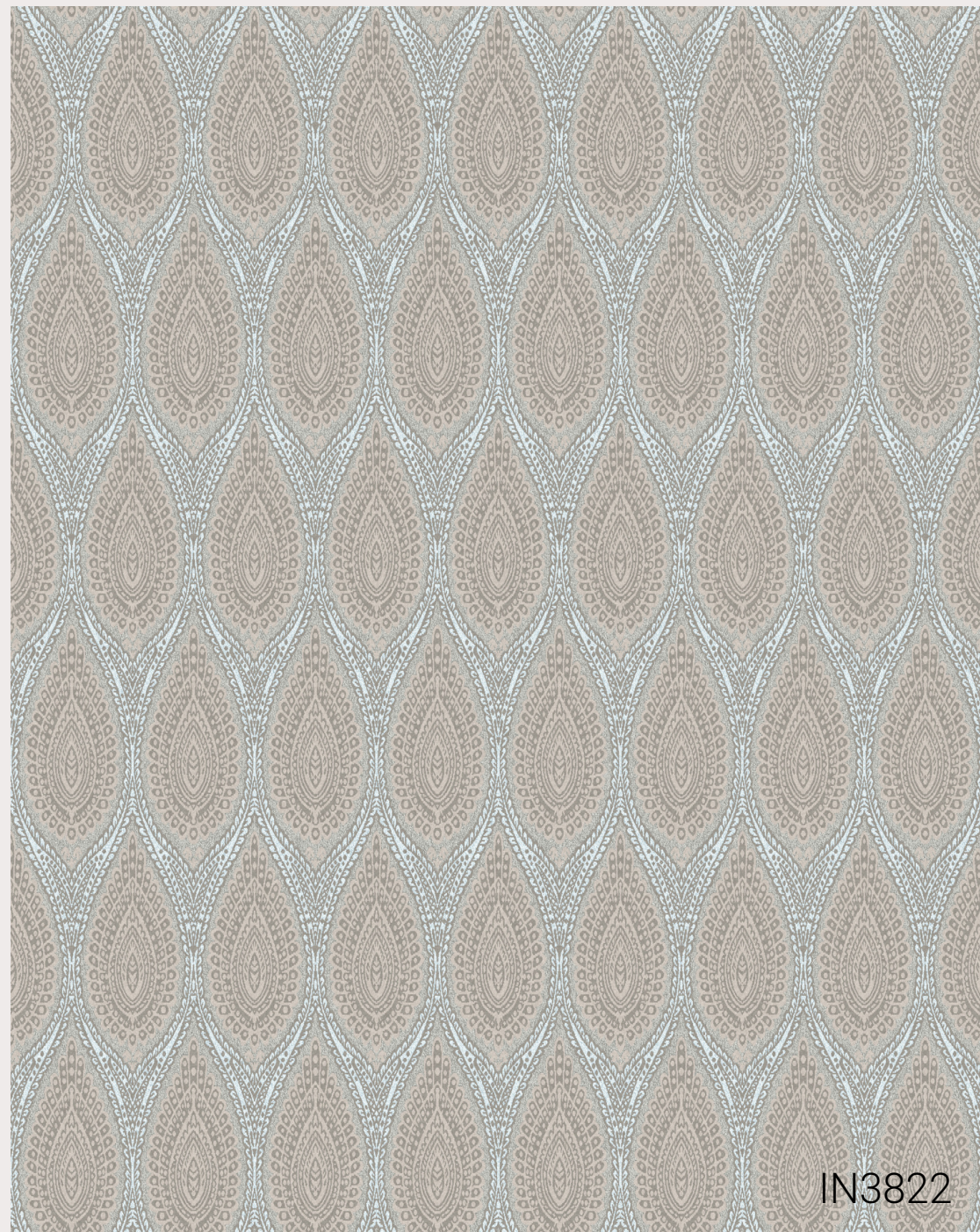




D5868



AX2820-7



IN3822



AX2820-7





IN3823



IN3819





LP3637



LP3539



IN3022





IN3820

