

# iD Latitude™ Abstracts

LUXURY VINYL TILE + PLANK

where design & performance intersect

 **Tarkett**



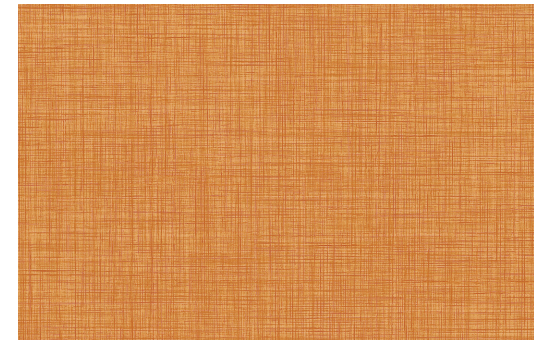
## ready for wherever the road leads

iD Latitude brings the full trifecta: great design, lasting performance and practical affordability. Our latest updates to the collection offer forward-looking wood, stone and abstract patterns that support your vision for every space. With quick installation, immediate occupancy and top-of-class Tectonic® protection, these 72 hard-working designs are ready to support every step of your next project.

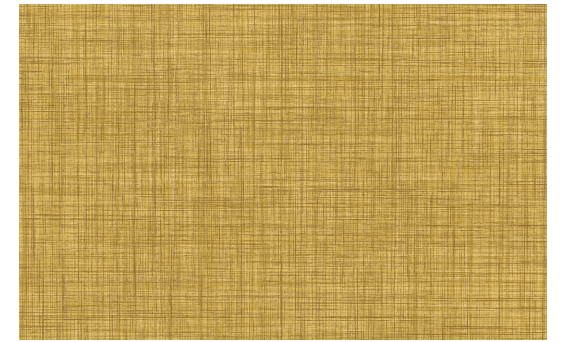
Because the collection is so expansive, we've divided iD Latitude Woods, Stones and Abstracts into three separate volumes.



ROYALE PLCZ 7553 | NIGHTFALL PLCZ 7552 | TAUPE PLFL 5110 | SUNSET PLCZ 7558 | ZINNIA PLCZ 7569  
 VILLA WHITE PLCZ 7563 | OVERCAST PLCZ 7560 | QUARTER-TURN INSTALLATION



PLCZ 7569  
 ZINNIA



PLCZ 7557  
 AFTERGLOW



PLCZ 7558  
 SUNSET



PLCZ 7568  
 PARADISE



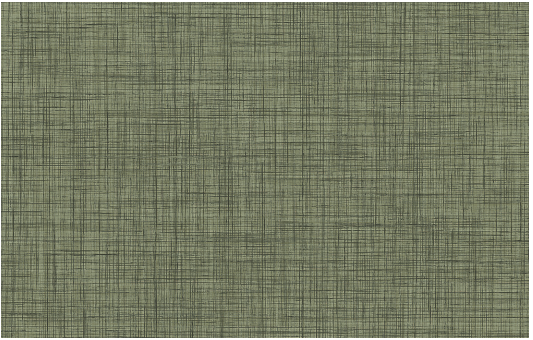
PLCZ 7559  
 STAR CROSSED



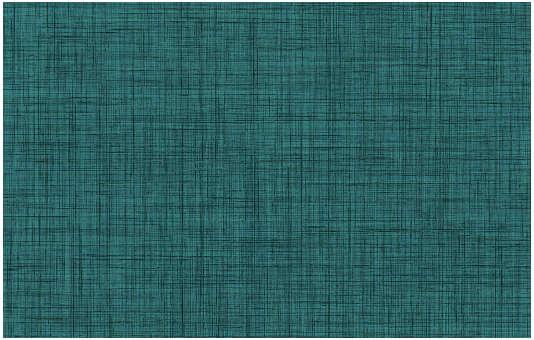
PLCZ 7555  
 KINGSTON



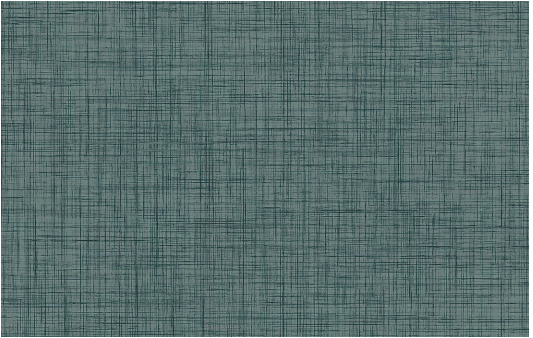
PLCZ 7570  
 BLOSSOM



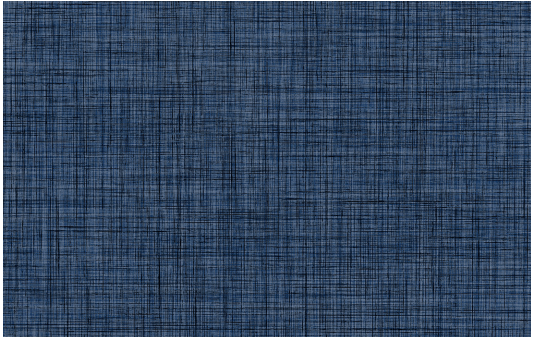
**PLCZ 7556**  
COASTLINE



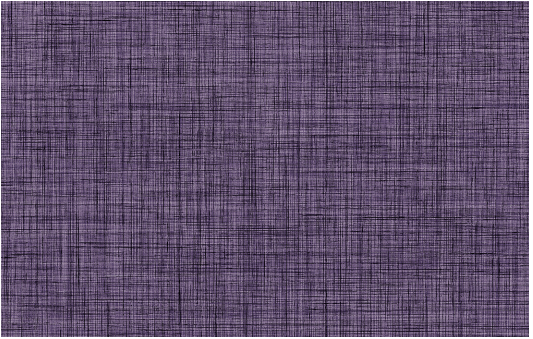
**PLCZ 7567**  
GULFSTREAM



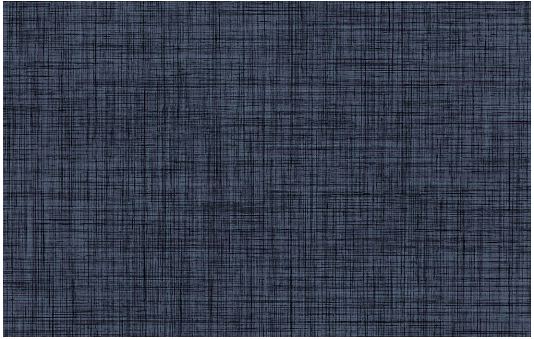
**PLCZ 7554**  
WATERMIST



**PLCZ 7553**  
ROYALE



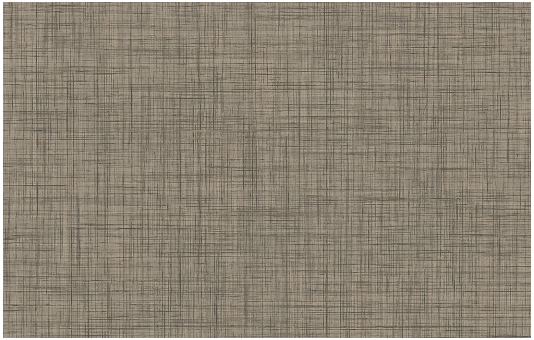
**PLCZ 7551**  
PALACE



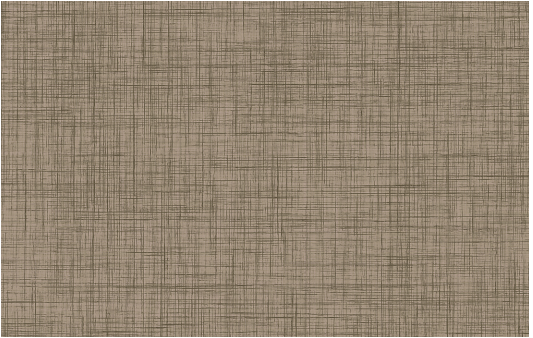
**PLCZ 7552**  
NIGHTFALL



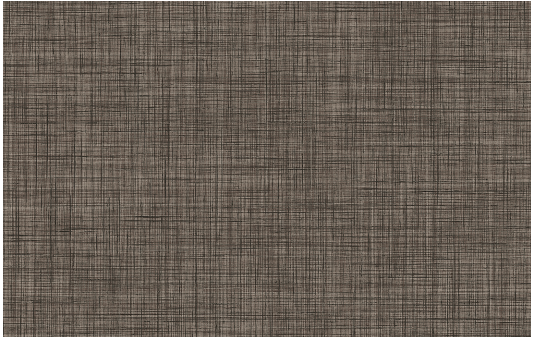
**PLCZ 7563**  
VILLA WHITE



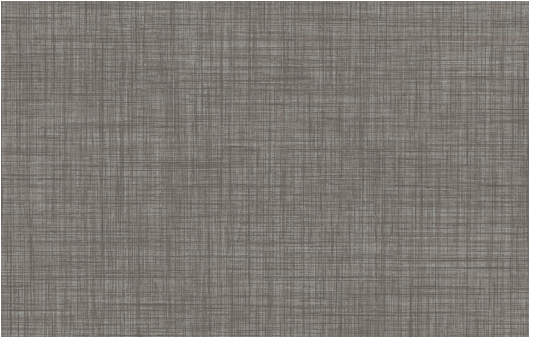
**PLCZ 7565**  
LANDMARK



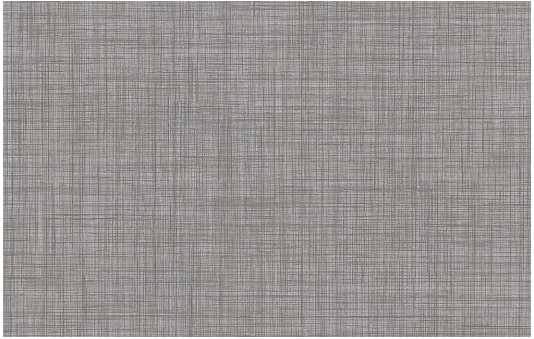
**PLCZ 7564**  
BARLEY



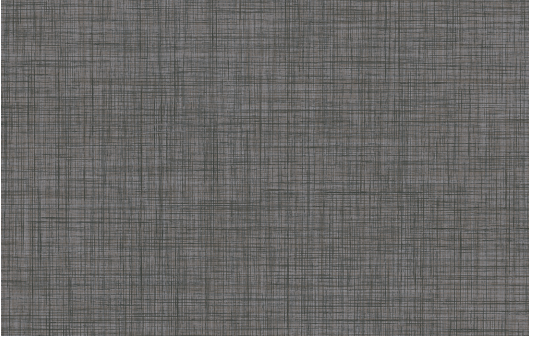
**PLCZ 7566**  
HARBOR



**PLCZ 7560**  
OVERCAST



**PLCZ 7562**  
WINDFRESH



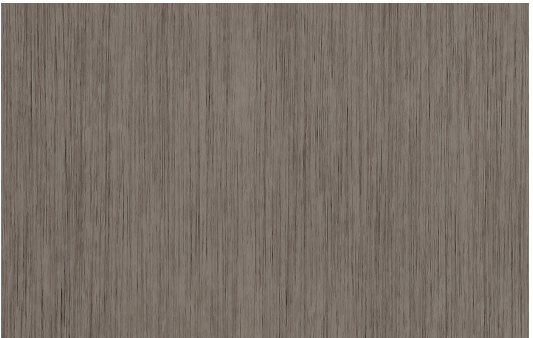
**PLCZ 7561**  
VAPOR



**PLFL 5101**  
BISQUE



**PLFL 5103**  
GREIGE



**PLFL 5110**  
TAUPE



**PLTG 3542**  
COOL BEIGE



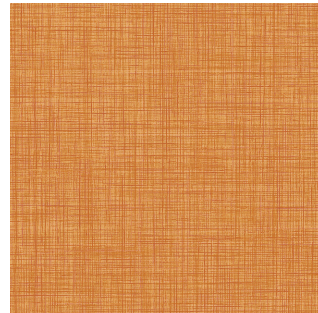
**PLTG 3545**  
CHARCOAL



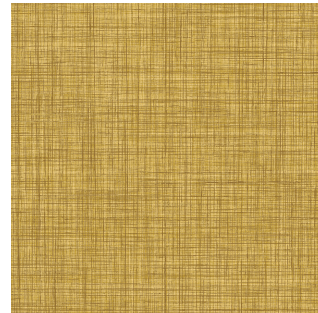
**PLSM 5102**  
NIMBUS

## iD Latitude | Abstracts

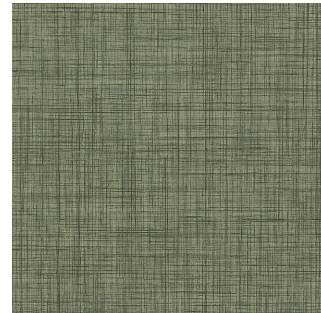
This broad palette of artful designs includes a variety of solutions for every segment—from soft, soothing neutrals to bold, saturated hues. You can mix and match iD Latitude Abstracts with wood and stone looks to add visual interest or helpful wayfinding.



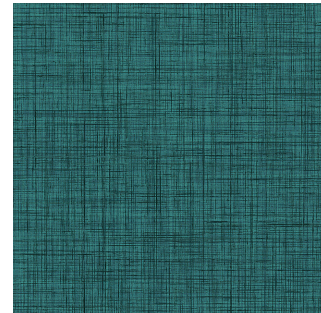
**PLCZ 7569**  
ZINNIA



**PLCZ 7557**  
AFTERGLOW



**PLCZ 7556**  
COASTLINE



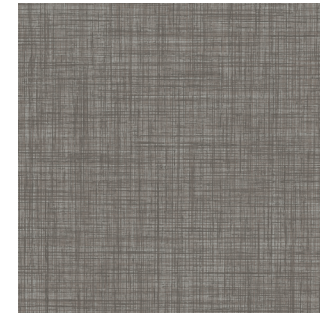
**PLCZ 7567**  
GULFSTREAM



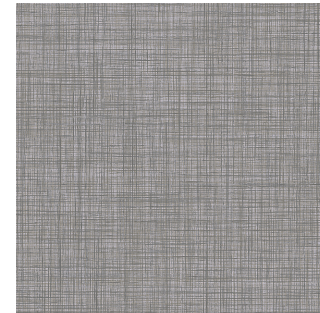
**PLCZ 7563**  
VILLA WHITE



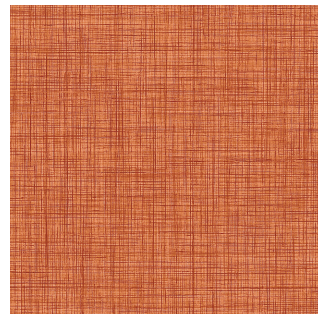
**PLCZ 7565**  
LANDMARK



**PLCZ 7560**  
OVERCAST



**PLCZ 7562**  
WINDFRESH



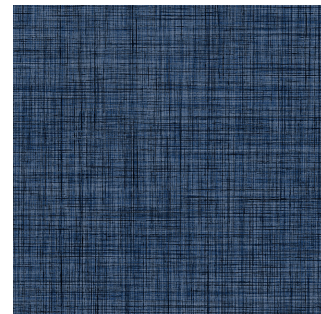
**PLCZ 7558**  
SUNSET



**PLCZ 7568**  
PARADISE



**PLCZ 7554**  
WATERMIST



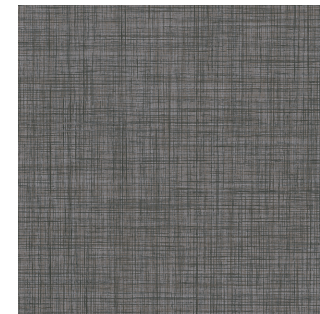
**PLCZ 7553**  
ROYALE



**PLCZ 7564**  
BARLEY



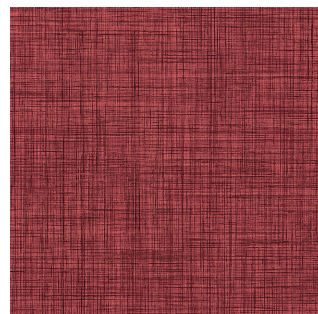
**PLCZ 7566**  
HARBOR



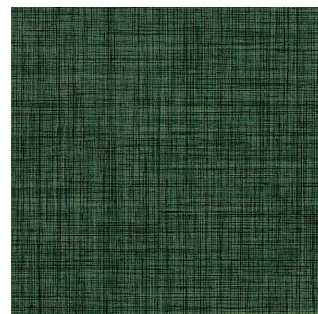
**PLCZ 7561**  
VAPOR



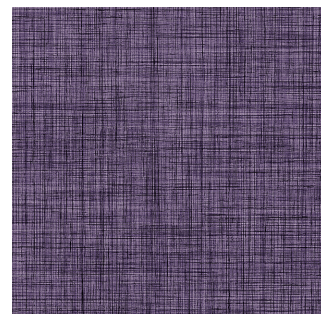
**PLSM 5102**  
NIMBUS



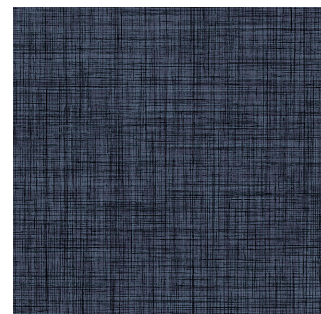
**PLCZ 7559**  
STAR CROSSED



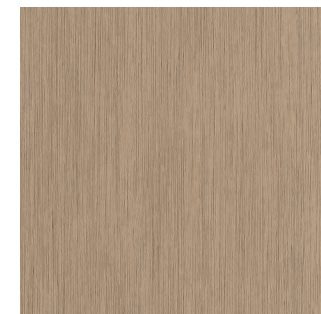
**PLCZ 7555**  
KINGSTON



**PLCZ 7551**  
PALACE



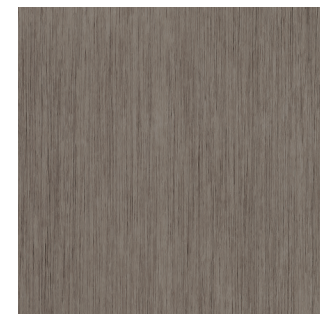
**PLCZ 7552**  
NIGHTFALL



**PLFL 5101**  
BISQUE



**PLFL 5103**  
GREIGE



**PLFL 5110**  
TAUPE



**PLTG 3542**  
COOL BEIGE



**PLCZ 7570**  
BLOSSOM



**PLTG 3545**  
CHARCOAL

## iD Latitude | Stones

Featuring a variety of linear, concrete and terrazzo looks, iD Latitude Stones blend contemporary design with the timeless aesthetic of natural materials. Even better than the real thing, these designs are stain-resistant and improve acoustics to remain beautiful and comfortable for years to come.



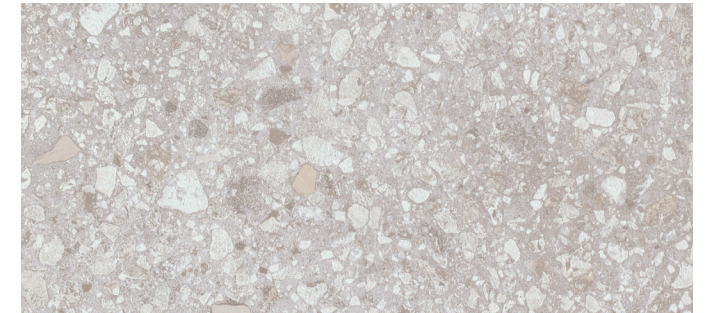
**PLST 7235**  
CRISTALLO



**PLCN 3515**  
ALUMIN



**PLST 7501**  
ELBRUS



**PLST 7544**  
LUNAR ROCK



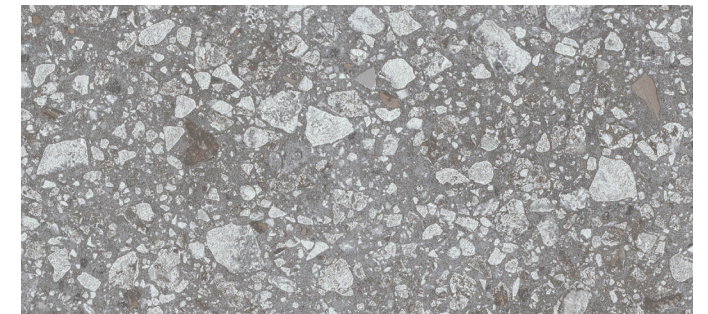
**PLST 7244**  
PRAIRIE



**PLST 7547**  
CHATEAU



**PLST 7548**  
IRON PATINA



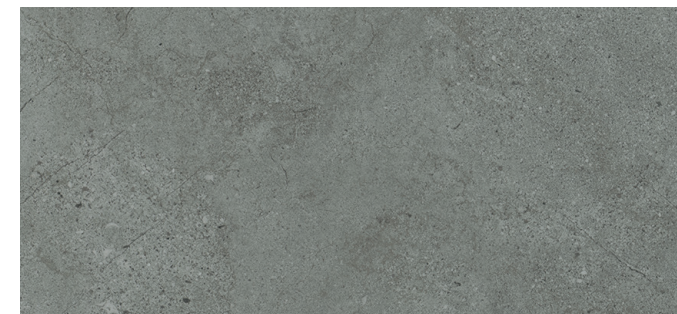
**PLST 7543**  
LAVA STONE



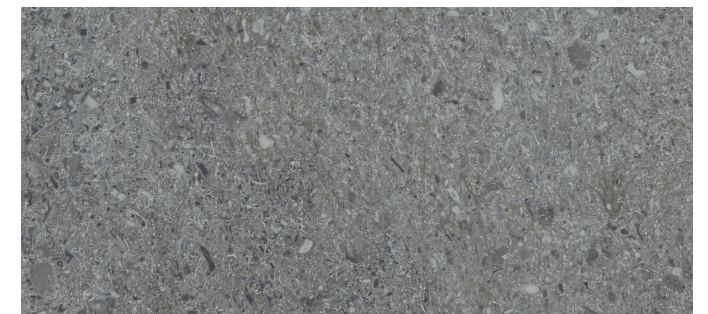
**PLST 7214**  
LUNA



**PLCN 3511**  
GYPSUM



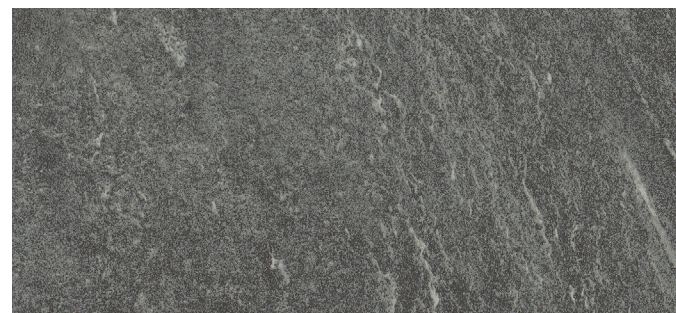
**PLST 7242**  
HEARTHSTONE



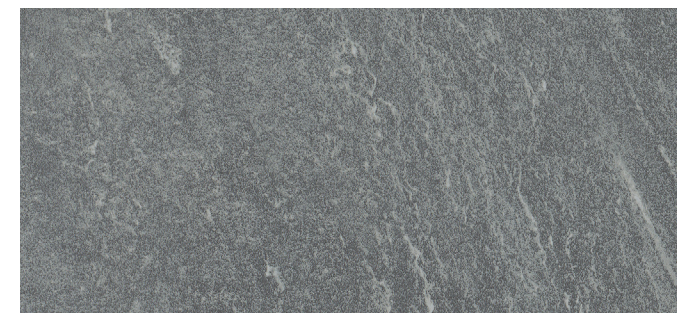
**PLST 7550**  
GEMSTONE



**PLST 7549**  
WEATHERED GLAZE



**PLST 7546**  
EVENING SHADOW



**PLST 7545**  
ARCTIC SKY



**PLCN 3519**  
CHARCOAL



## iD Latitude | Woods

Nothing adds visual warmth to a space like the look of natural wood grain. This broad selection of 30 wood visuals gives you complete design flexibility, from cool to warm tones, light to dark looks, and a variety of grain patterns.



**PLWD 3523**  
LAUREL OAK



**PLWD 7539**  
GOLDEN OAK



**PLWD 7526**  
PEARL MAPLE



**PLWD 7533**  
NORDIC



**PLWD 3522**  
CRÈME OAK



**PLWD 7532**  
LACEWOOD



**PLWD 3606**  
CHAMOIS OAK



**PLWD 5134**  
BLANCHED PINE



**PLWD 3305**  
AMERICAN CHERRY



**PLWD 3308**  
ASH



**PLWD 7537**  
ENGLISH WALNUT



**PLWD 7541**  
PARABLE



**PLWD 7536**  
BUTTERNUT



**PLWD 5136**  
ACADIA PINE



**PLWD 7535**  
SILVER MAPLE



**PLWD 3605**  
TAOS OAK



**PLWD 7524**  
NATURAL TEAK



**PLWD 3307**  
EUROPEAN CHERRY



**PLWD 3405**  
HICKORY



**PLWD 7538**  
AUTUMN WALNUT



**PLWD 3530**  
VINTAGE OAK



**PLWD 7530**  
GENEVA



**PLCG 7514**  
GIBRALTER



**PLWD 7523**  
SUNTONED TEAK



**PLWD 3401**  
BLACK WALNUT



**PLWD 7534**  
MOUNTAIN MAPLE



**PLWD 7542**  
HAZELWOOD



**PLWD 7531**  
CHANDLER OAK



**PLWD 7540**  
MILLENNIUM OAK



**PLWD 3603**  
URBAN OAK

# Tarkett Solution SPECtrum™

## Design more brilliantly.

At Tarkett, we believe in placing people in the center of every space. So we've developed a portfolio of products designed to work together both functionally and aesthetically, helping you create more supportive spaces that maximize return on investment. Our full palette of colors, patterns, and textures is coordinated to work together visually across product categories – creating the perfect balance for people, planet, and performance.

The Brilliance<sup>SM</sup> Digital Color System puts the entire TARKETT SOLUTION SPECtrum portfolio at your fingertips – no matter where you happen to be working. Within one digital tool, you can save favorite surfaces to project boards, visualize them in a space, and order samples. By getting the right color match every time, the tool reduces sample waste and shipping, helping us all design more responsibly and reduce our carbon footprints. Speak to your Tarkett sales representative to get started, or visit [brilliance.tarkett.com](https://www.brilliance.tarkett.com).



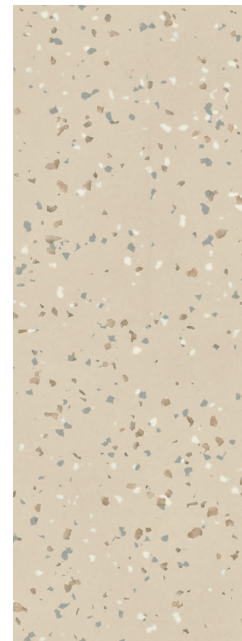
Johnsonite Millwork® Wall Base  
**Diplomat 293 Peacock**



Johnsonite Millwork Wall Base  
**Inflection 292 Vaporize**



Johnsonite Millwork Wall Base  
**Silhouette 31 Zephyr**



iQ® Eminent™  
**928 Dusty Sand**

Color may vary from actual swatch. To order a sample and to learn more, please visit [tarkett.com](https://www.tarkett.com).



iD Latitude Wood LVT  
**Butternut PLWD 7536**



iD Latitude Stone LVT  
**Iron Patina PLST 7548**



iD Latitude Abstract LVT  
**Watermist PLCZ 7554**



iD Latitude Abstract LVT  
**Villa White PLCZ 7563**



iD Latitude Abstract LVT  
**Coastline PLCZ 7556**



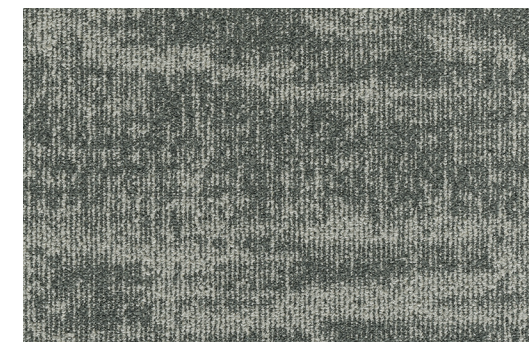
iD Latitude Wood LVT  
**Autumn Walnut PLWD 7538**



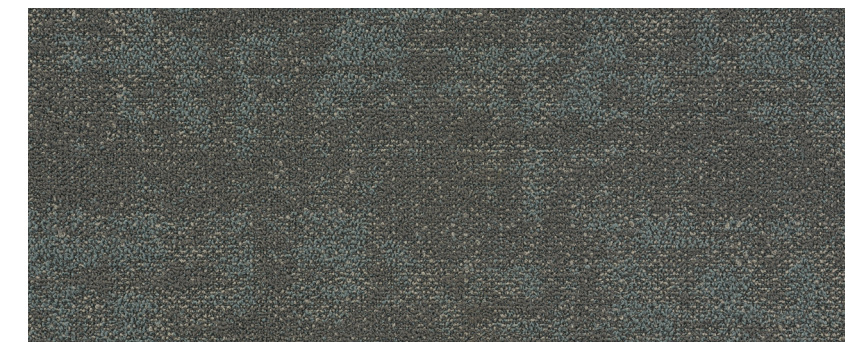
iD Latitude Wood LVT  
**Lacewood PLWD 7532**



iD Latitude Stone LVT  
**Chateau PLST 7547**



Soft Surface Powerbond® | Modular Tile  
**Tundra Flower 11663 Sea Gem 52606**



Soft Surface Powerbond | Modular Tile  
**Earthbound 11573 Streamside 65402**

## Tarkett Techtonic delivers unequalled resistance to scratches, abrasions and scuffs.

Every flooring product has a coating, but only Tarkett has Techtonic: a groundbreaking solution that strengthens the durability of LVT, giving you better performance for the price. By mixing rugged protection with a beautiful matte finish, Techtonic keeps your floors' surfaces looking better and lasting longer.



Resists scratches 40% better. **So you'll never have to choose between replacing a new floor, or living with the damage.** Just one exposed nail in the foot of a chair can scratch a new floor and produce whitening. In a series of laboratory experiments utilizing a diamond-tipped Taber Scratch tool, Techtonic performed significantly better than the industry market leader—withstanding greater pressure without scratching or scratch whitening.



18% more protection against abrasions. **Now you can move furniture with more freedom— and less concern.** Surface sheen is worn away by repetitive actions in high-traffic areas, such as the movement of chairs and tables. By protecting surfaces, Techtonic preserves not just their sheen, but your peace of mind.



Best-in-class scuff resistance. **Spend less time cleaning black marks (and more years enjoying spotless surfaces).** Those black marks from dragging shoes and chair casters? They're scuff marks caused by friction. No product on the market fights them better than Techtonic — a solution that keeps your floors performing better, year after year.



Immaculate stain defense. **Momentary mishaps shouldn't have permanent effects.** Techtonic's polyurethane coating provides an advanced level of security against stains, reducing the chances of damaged flooring (and expensive cleaning).

## CERTIFIED **asthma & allergy friendly**<sup>®</sup>

More than 25 million people in the U.S. have asthma, and it's been named a leading chronic disease among children, causing nearly 1 million missed school days each year. At Tarkett, we believe everyone deserves healthy spaces where they can learn, work and play. Guided by Tarkett Human-Conscious Design<sup>®</sup>, we're designing flooring surfaces that are safe, comfortable and productive for diverse needs and populations. That's why Tarkett North America became the first flooring manufacturer to offer **CERTIFIED asthma & allergy friendly**<sup>®</sup> surfaces for both residential and commercial use.

The **asthma & allergy friendly**<sup>®</sup> certification from Allergy Standards Ltd. (ASL), operated in cooperation with the Asthma and Allergy Foundation of America (AAFA), identifies products that are proven to reduce exposure to allergens and asthma triggers—taking into account total installation (product and adhesive) and its ability to be easily cleaned without harsh chemicals.

As a regulated, physician-led certification, this mark is awarded exclusively to products that have met strict testing standards developed by healthcare experts to ensure:

- Allergens are easily removed from the surface of the flooring
- Airborne allergen levels remain low while cleaning
- Volatile organic compound (VOC) emissions remain low after installation





# Proof in Every Step<sup>SM</sup>

For years, Tarkett has raised the sustainability standards of our industry. We took the first steps and are determined to stay a step ahead.

And while inspirational words are great, we know impact is in the numbers — numbers subjected to intense third-party scrutiny. So, at Tarkett we don't just say it, **we prove it.**

These three values help us stay the course when it comes to sustainability.

 <h3>Setting New Transparency Standards</h3> <p>What you begin with affects everything that comes after it. That's why we subject our products to relentless scientific scrutiny and third-party testing and offer radical transparency about our materials and operations.</p>	 <h3>Empowering the Next Step in the Value Chain</h3> <p>We make our business partners and customers more inherently sustainable with products and practices that consider every step in the value chain.</p>	 <h3>Creating Healthier Futures</h3> <p>We base all our sustainability initiatives on our commitment to create healthier environments indoors and out, today and for generations to come.</p>
--	--	--

## Sustainability Highlights

Feel confident in the numbers



A holistic approach you can count on...

# 97%

of our raw materials are third-party assessed for their impact on human and environmental health based on Cradle to Cradle criteria.

# 70%

of raw materials are abundant, rapidly renewable or recycled.

# 14

zero-waste to landfill manufacturing plants.



...And certifications you can trust.

# 2011

started working with EPEA to integrate Cradle to Cradle principles into every facet of our business.

# 2013

first commercial flooring CERTIFIED **asthma and allergy friendly**®.

# 2022

Powerbond RS is the first soft surface product in the industry to be CERTIFIED **asthma and allergy friendly**®.



We're leaders in radical transparency.

# 100

ppm

raw materials content revealed down to 100 parts per million.

When most manufacturers reveal raw materials content down to just 1,000 ppm, there's simply no contest.

We've been providing Material Health Statements since 2013 to give you peace of mind about the content of our products.



Setting tomorrow's standards...

# 99%

of flooring solutions have low VOC emission levels — 10x lower than the most stringent world standards.

# 100%

orthophthalate-free vinyl production. First company to eliminate orthophthalates from all products.



...For globally recognized excellence.

# 2010

first flooring manufacturer to join the UN Global Compact.

# 2021

awarded the Gold medal by EcoVadis; now ranked among the top 2% of companies in our industry rated by EcoVadis.

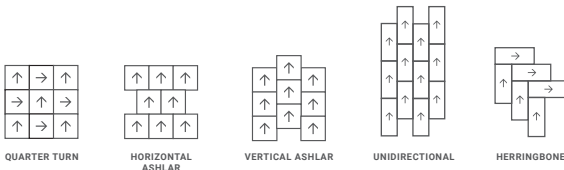
# 2022

scored A-, the CDP management level, regarding the climate change performance assessment.

At Tarkett, social and environmental responsibility aren't add-ons. They're woven, stamped and sealed into everything we do. **But more importantly, we don't just say this, we prove it.**

# Specifications.

<b>Style Name/Number:</b>	<b>iD Latitude Abstracts</b>
Classification:	ASTM F1700, Class III, Type B
Warranty:	25 years
Tile Sizes:	6"x36": All Styles 18"x18": Color Zone, Fine Lines, TexGrain
Sample Sizes:	6"x6": All Styles 6"x36": Stria Marble 18"x18": Color Zone, Fine Lines, TexGrain
Carton Size:	6"x36"
Quantity:	24 tiles per carton, 36 sq. ft. per carton
Weight:	36 lbs per carton, 66 carton per pallet
Carton Size:	18"x18"
Quantity:	20 tiles per carton, 45 sq. ft. per carton
Weight:	45 lbs per carton, 45 carton per pallet
Total Thickness:	0.120" (3mm)
Wear Layer Thickness:	20 mil
Finish:	Techtonic
Edge Treatment:	Square
Emboss:	Standard Emboss
Colors Available:	26
Installation Method:	Glue-down
Installation Options:	6"x36": Unidirectional, Herringbone 18"x18": Quarter Turn, Horizontal Ashlar, Vertical Ashlar



# +TECHTONIC®

<b>Testing</b>		
Static Load:	ASTM F970	250 psi, ≤0.005 inches
Residual Indentation:	ASTM F1914	Passes
Slip Resistance:	ASTM D2047	≥0.5 SCOF
Flammability:	ASTM E648	≥0.45 W/cm² (Class 1)
Smoke Density:	ASTM E662	Passes
Chemical Resistance:	ASTM F925	Passes
Resistance to Light:	ASTM F1515	ΔE≤8
Resistance to Heat:	ASTM F1514	ΔE≤8
Dimensional Stability:	ASTM F2199	Passes
Flexibility:	ASTM F137	Passes

## Adhesives for LVT products.

A brief comparison of adhesive products recommended for use with Tarkett LVT, in multiple installation scenarios.

Adhesive	Moisture RH	
RollSmart™	95%	Allows immediate occupancy
975 Two-Part Urethane Adhesive	90%	For install with heavy point loads, intense direct sunlight, topical moisture, and extreme temperature variation
959HM High Moisture Subfloor Adhesive	99%	New concrete
	95%	2+ Year-old concrete
996 Two-Part Epoxy Adhesive	90%	For installations with heavy point loads, intense direct sunlight, topical moisture, and extreme temperature variation. DO NOT use over wood or steel substrates.

## Construction option.

LVT Product	Recycled Content Pre-Consumer	Ortho-Phthalate-free	FloorScore Certified
iD Latitude	45%	Yes	Yes

## Sustainability attributes.

### LUXURY VINYL TILE

#### Healthy Materials:

Ortho-phthalate-free; 97% raw materials third-party assessed

#### Indoor Air Quality:

FloorScore® certified; meets CDPH standard method v1.2-2017 CERTIFIED asthma & allergy friendly®

#### Transparency Documentation:

Industry-wide EPD

#### Responsible End-of-Use Management:

Part of Tarkett ReStart® program for take back and recycling

## Transparency.

### Access to Transparency Documents:

Transparency certifications and product details are located on the Tarkett website, [ecomedes.com](http://ecomedes.com) and [mindfulMATERIALS.com](http://mindfulMATERIALS.com). Visit us on Ecomedes ([tarkett.ecomedes.com](http://tarkett.ecomedes.com)) to find product certification documentation to support green building systems and federal standards.



On the cover:

**iD LATITUDE LVT**  
GIBRALTER PLCG 7514  
WATERMIST PLCZ 7554  
GEMSTONE PLST 7550



## Tarkett North America

30000 Aurora Road  
Solon, Ohio 44139  
800.899.8916

[tarkett.com](http://tarkett.com)

For more accurate color and pattern representation, we suggest you visit an authorized Tarkett dealer to view an actual product sample. All third-party trademarks are the property of their respective owners.