

# Merge / Emerge Collection

HOSPITALITY CARPET

An  
experiment  
in blending.

 **Tarkett**









## Creative chemistry.

An experiment in the blending of soft and hard surfaces, the Merge/Emerge Collection combines pattern and texture unlike anyone has done before. As a visual metaphor for the Tarkett brand, the line represents the creative chemistry that ignites when we come together.

**Great spaces.  
One surface at a time.**

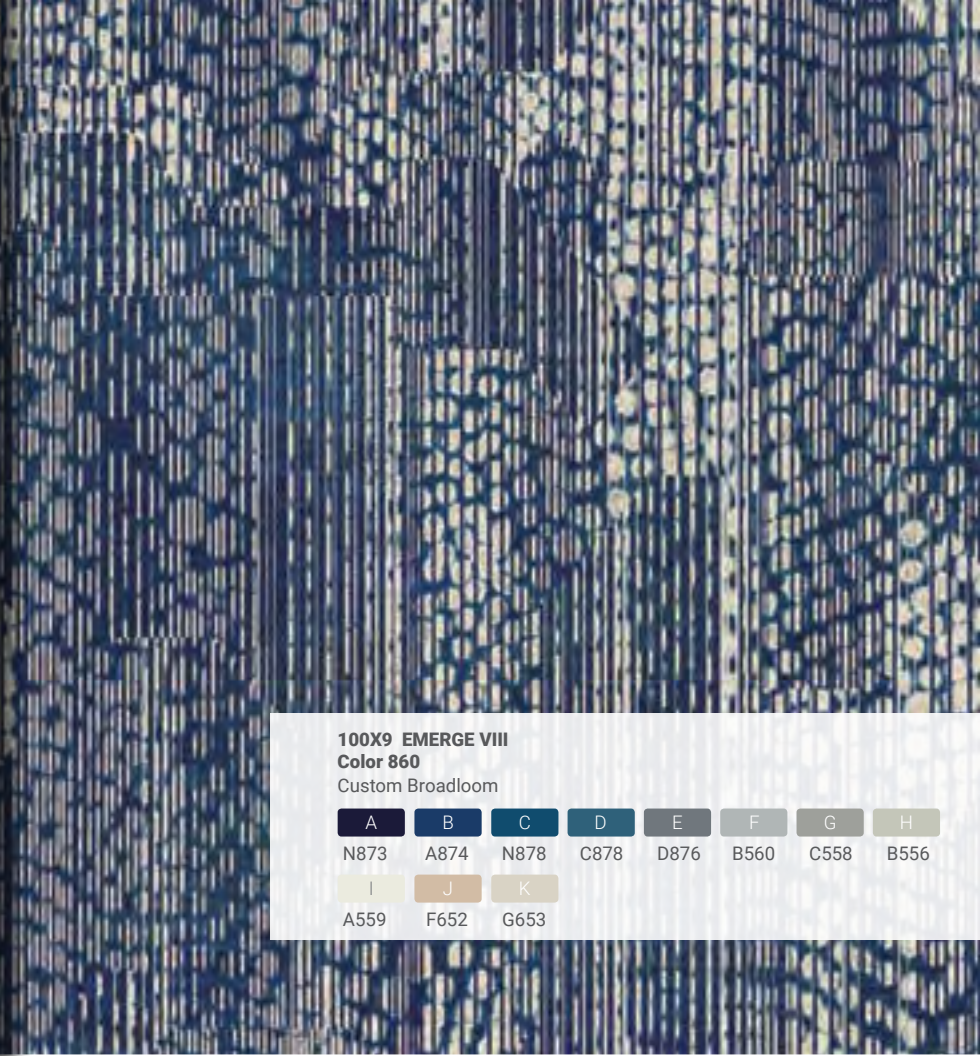




**106LP EMERGE XV**  
**Color 1560**  
Custom Broadloom

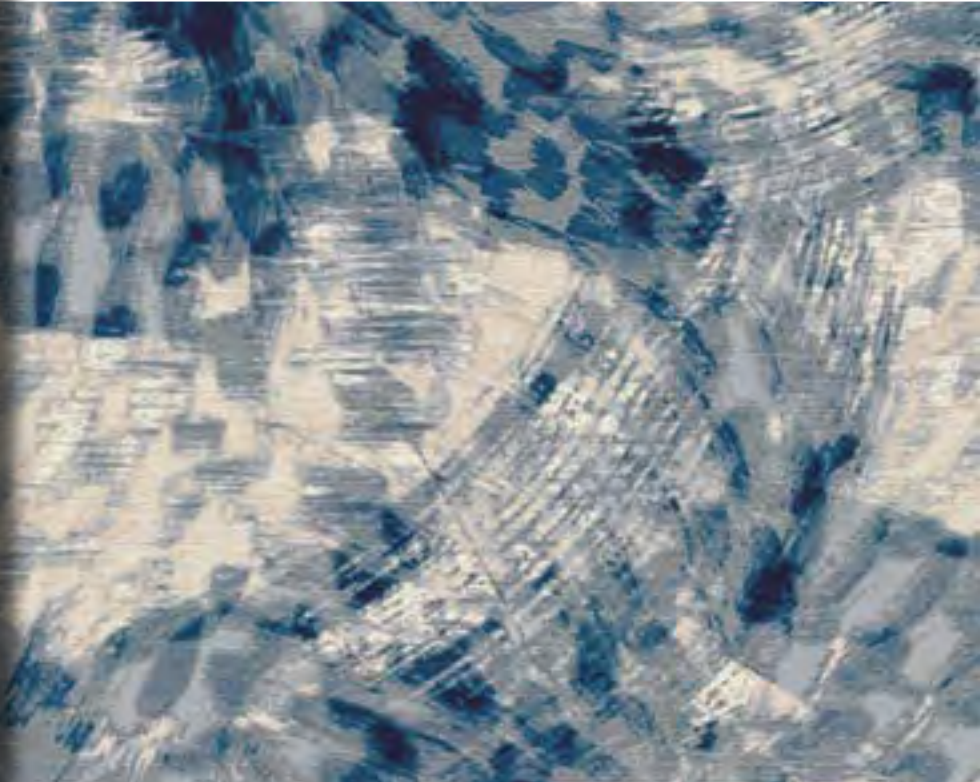
- |       |       |       |       |       |       |       |
|-------|-------|-------|-------|-------|-------|-------|
| A     | B     | C     | D     | E     | F     | G     |
| X395C | X392C | 5503L | 5515C | X396C | X398C | 5509C |





**100X9 EMERGE VIII**  
**Color 860**  
Custom Broadloom

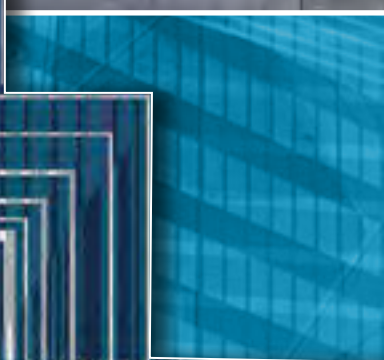
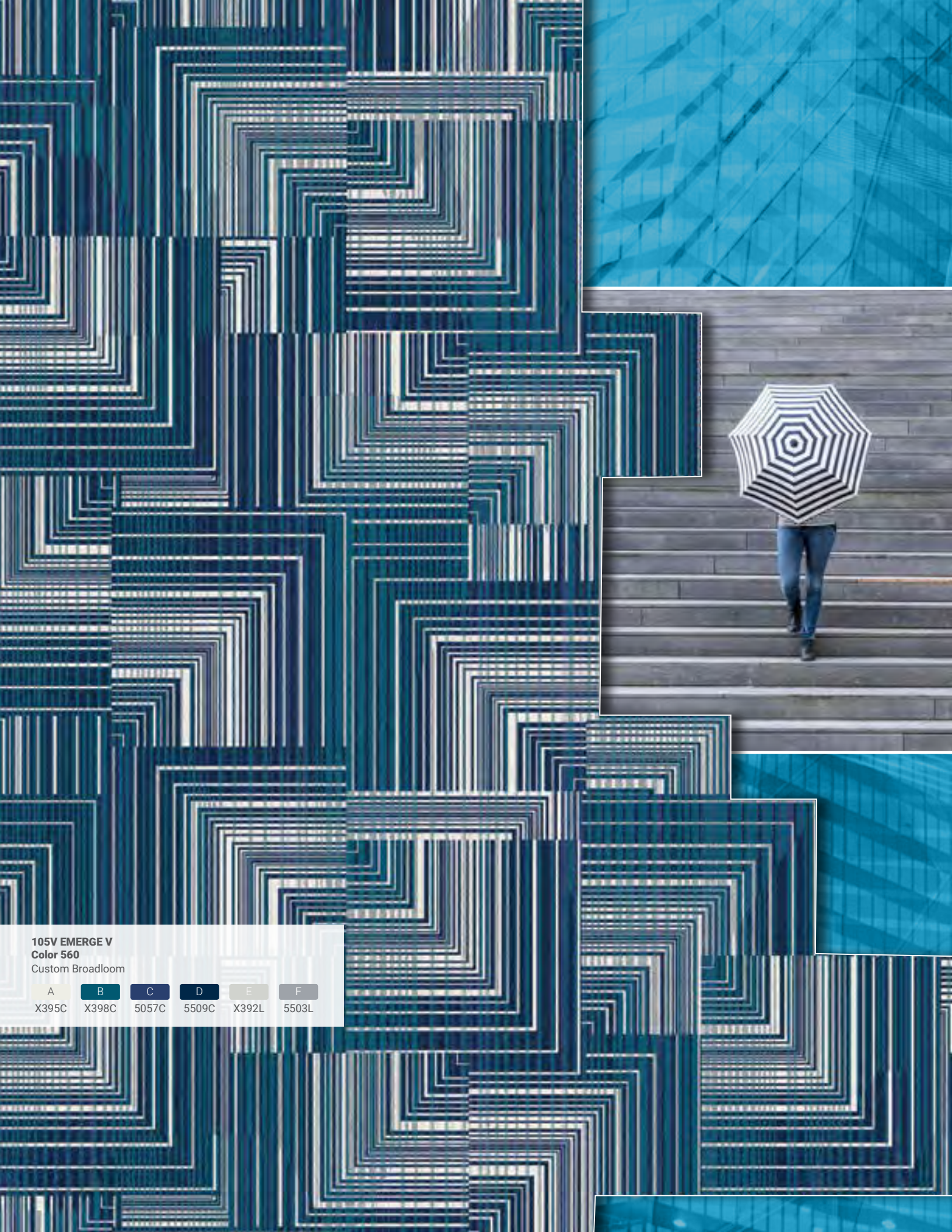
<b>A</b>	<b>B</b>	<b>C</b>	<b>D</b>	<b>E</b>	<b>F</b>	<b>G</b>	<b>H</b>
N873	A874	N878	C878	D876	B560	C558	B556
<b>I</b>	<b>J</b>	<b>K</b>					
A559	F652	G653					



**104X9 EMERGE XII**  
**Color 1260**  
Custom Broadloom

<b>A</b>	<b>B</b>	<b>C</b>	<b>D</b>	<b>E</b>	<b>F</b>	<b>G</b>	<b>H</b>	<b>I</b>	<b>J</b>
N873	N878	C878	D876	B560	C558	B556	A559	F652	G653





**105V EMERGE V**  
**Color 560**

Custom Broadloom

A	B	C	D	E	F
X395C	X398C	5057C	5509C	X392L	5503L





**107V EMERGE VII**  
**Color 760**  
Custom Broadloom

<b>A</b>	<b>B</b>	<b>C</b>	<b>D</b>	<b>E</b>	<b>F</b>	<b>G</b>	<b>I</b>	<b>J</b>	<b>K</b>	<b>L</b>
X395C	X392C	5503C	8537C	X391C	5510C	3537C	X395L	5503L	5510L	X401L



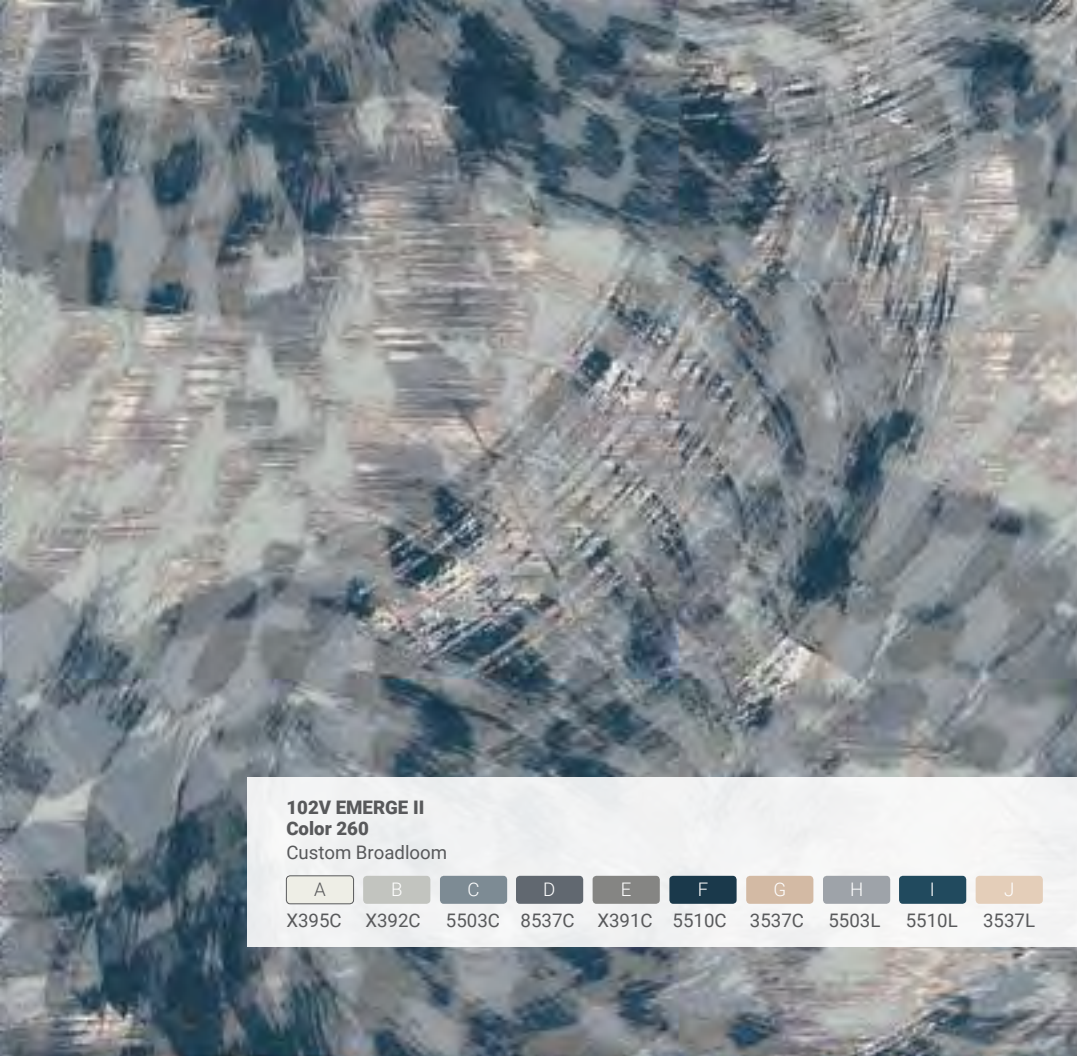
**101V EMERGE I**

**Color 160**

Custom Broadloom

A	B	C	D	E	F	G	H	I	J	K	L
X395C	X392C	5503C	8537C	X391C	X398C	5510C	5057C	5509C	3537C	X395L	5503L
M	N	O	P	Q	R	S	T				
X391L	X398L	5510L	5057L	5509L	X401L	3537L	X394L				





**102V EMERGE II**  
**Color 260**  
Custom Broadloom

A	B	C	D	E	F	G	H	I	J
X395C	X392C	5503C	8537C	X391C	5510C	3537C	5503L	5510L	3537L



**104V EMERGE IV**  
**Color 460**  
Custom Broadloom

A	B	C	D	E	F	G	H	I	J	K
X395C	X392C	5503C	8537C	X391C	X398C	5510C	5057C	5509C	3537C	X394C
L	M	N	O	P	Q					
X395L	X392L	X398L	5509L	X401L	3537L					







**108LP EMERGE XVII**

**Color 1760**

Custom Broadloom

A	B	C	D	E	F	G	H
X395C	X392C	5503L	5515C	X396C	X398C	5509C	3537C



**105LP EMERGE XIV**

**Color 1460**

Custom Broadloom

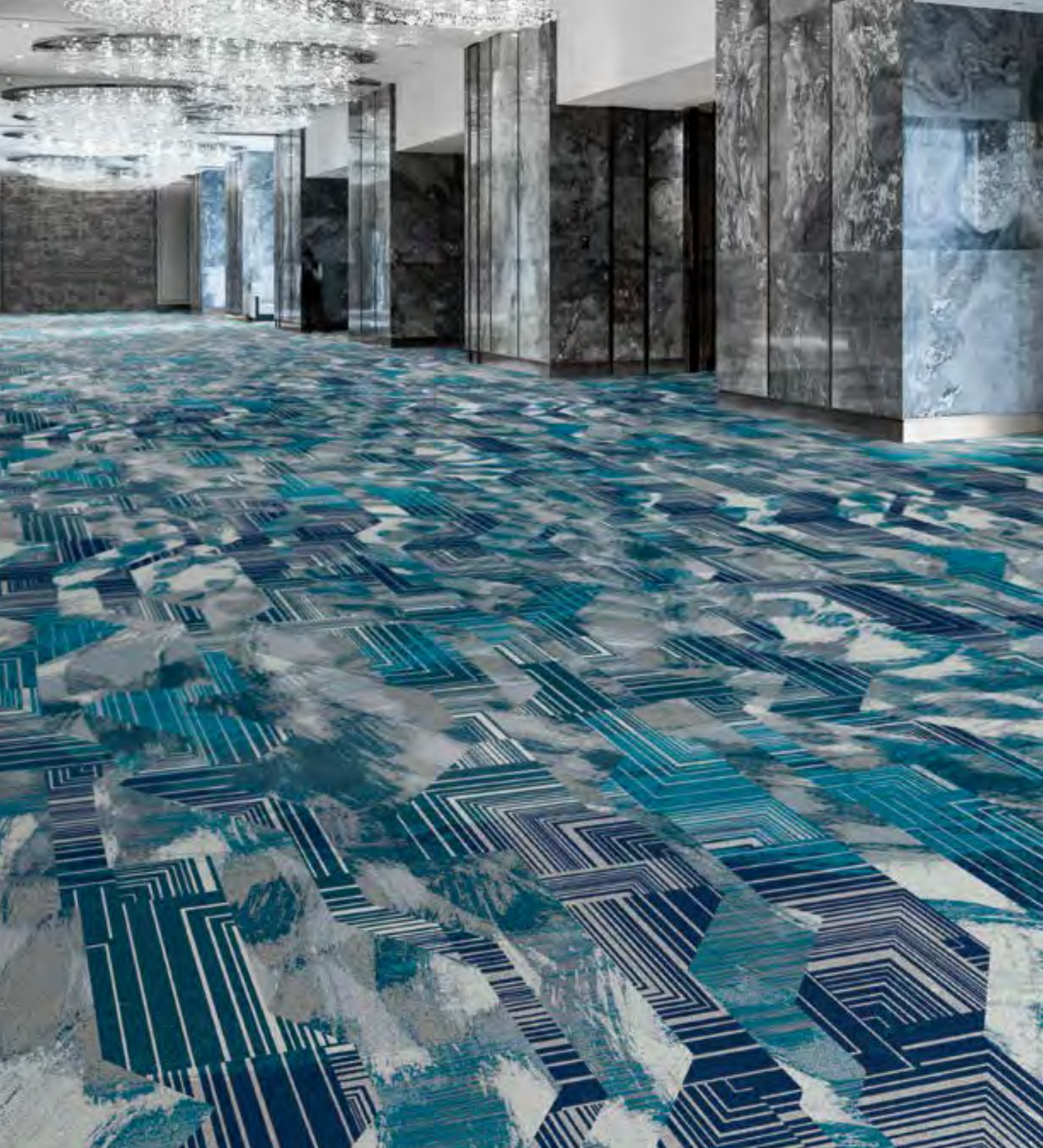
A	B	C	D	E	F	G	H
X395C	X392C	8502C	5503C	X396C	5510C	X401C	3537C





set in shades of blue  
that fade to grey, set  
off by stark black  
and white





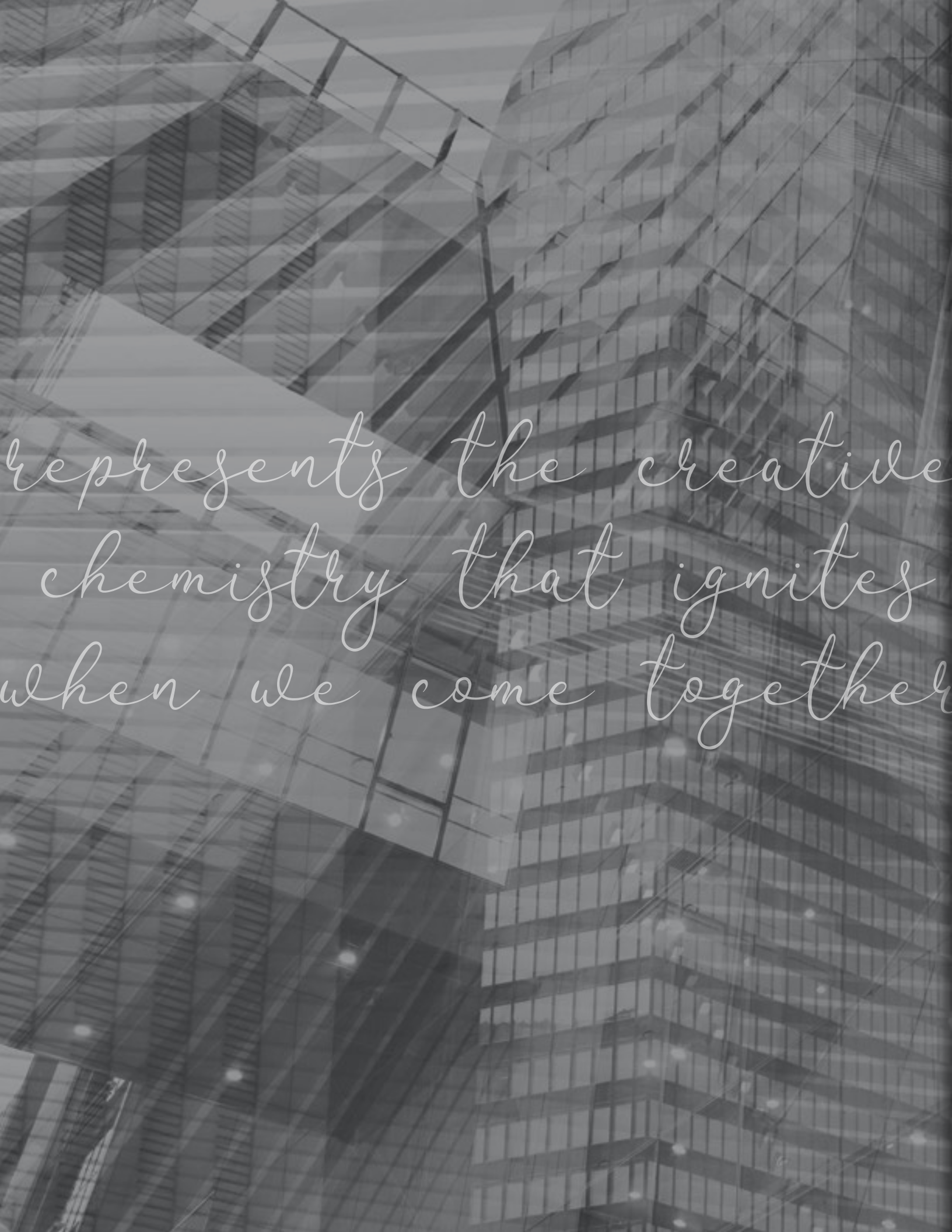
**103V EMERGE III**  
**Color 360**  
Custom Broadloom

A	B	C	D	E	F	G	H	I	J	K	L
X392C	5503C	8537C	X391C	X398C	5510C	5509C	X392L	5503L	X391L	X398L	5510L



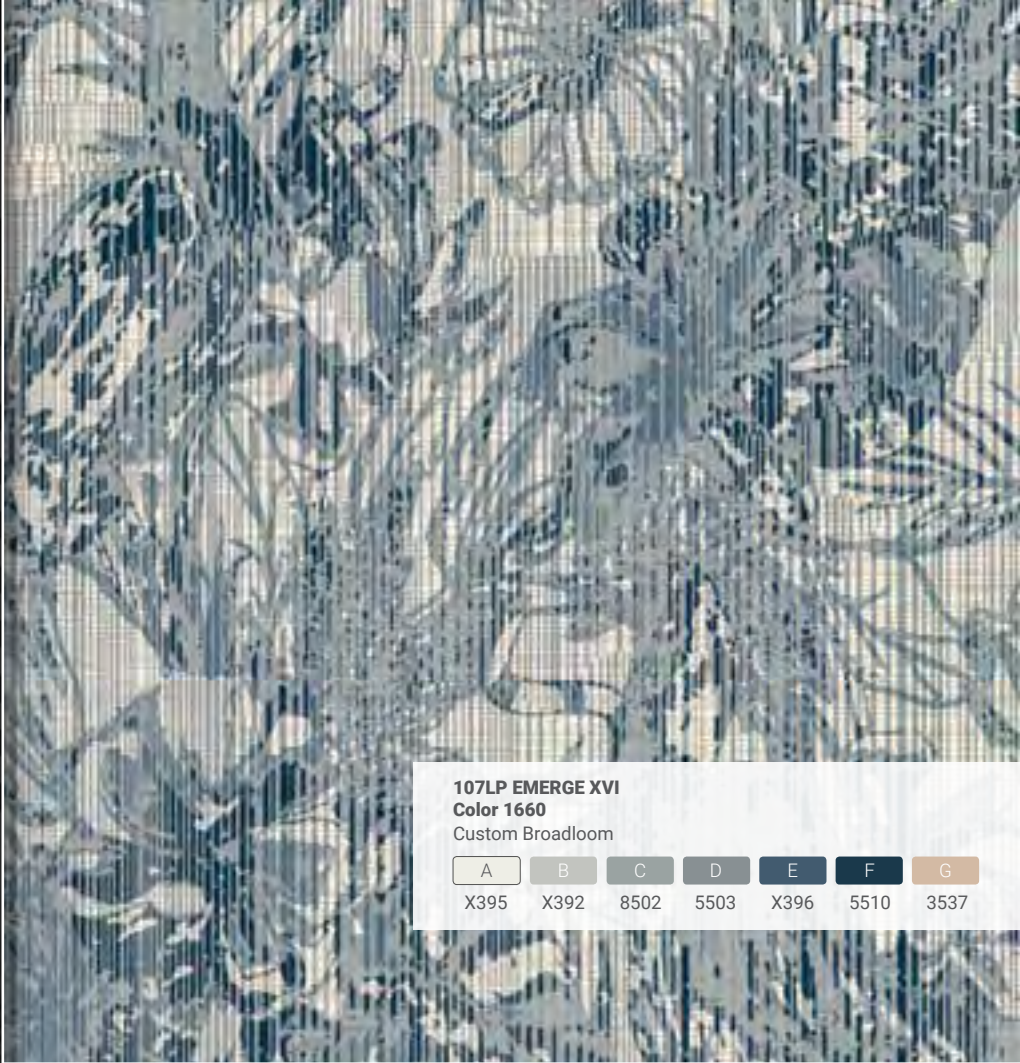






represents the creative  
chemistry that ignites  
when we come together



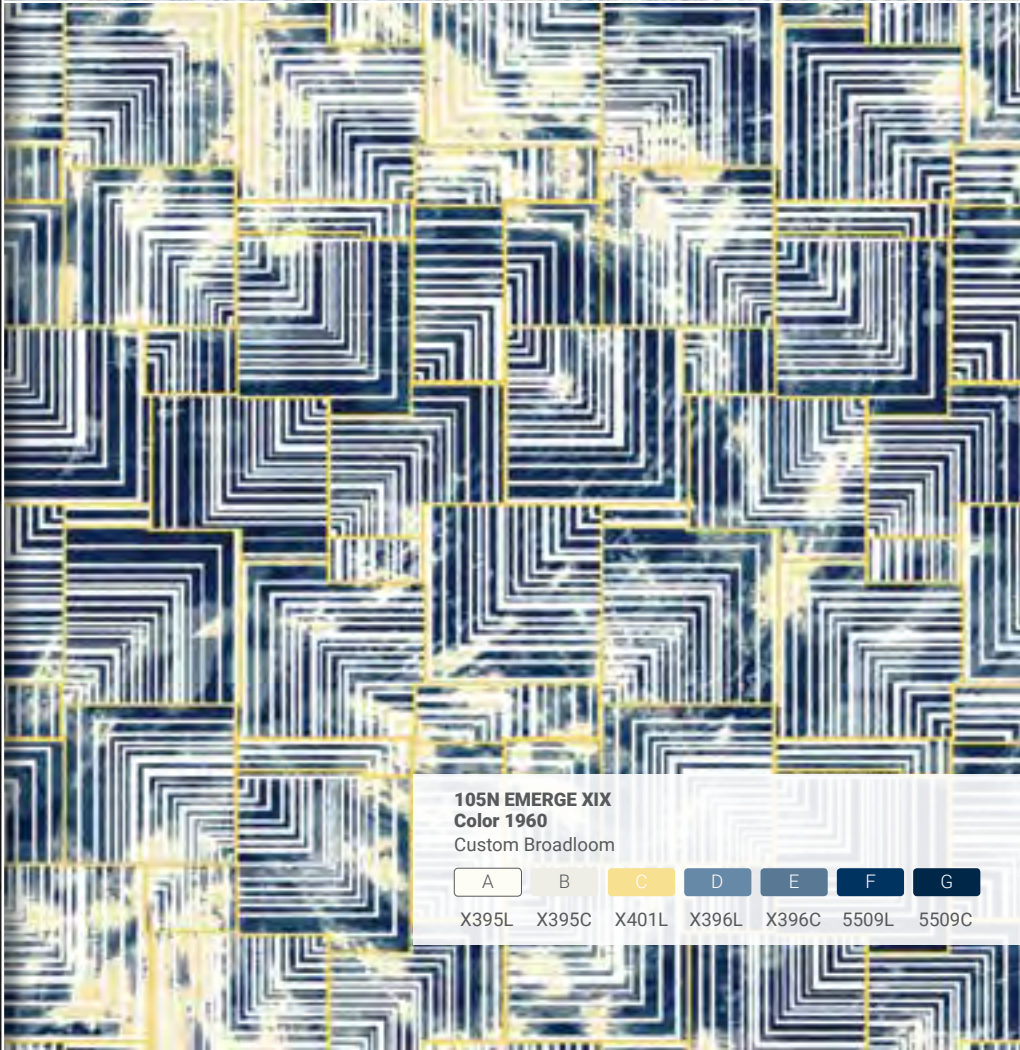


**107LP EMERGE XVI**

**Color 1660**

Custom Broadloom

A	B	C	D	E	F	G
X395	X392	8502	5503	X396	5510	3537



**105N EMERGE XIX**

**Color 1960**

Custom Broadloom

A	B	C	D	E	F	G
X395L	X395C	X401L	X396L	X396C	5509L	5509C





**106N EMERGE XX**  
**Color 2060**  
Custom Broadloom

- |       |       |       |       |       |
|-------|-------|-------|-------|-------|
| A     | B     | C     | D     | E     |
| X395L | X401L | X396C | 5509L | 5509C |







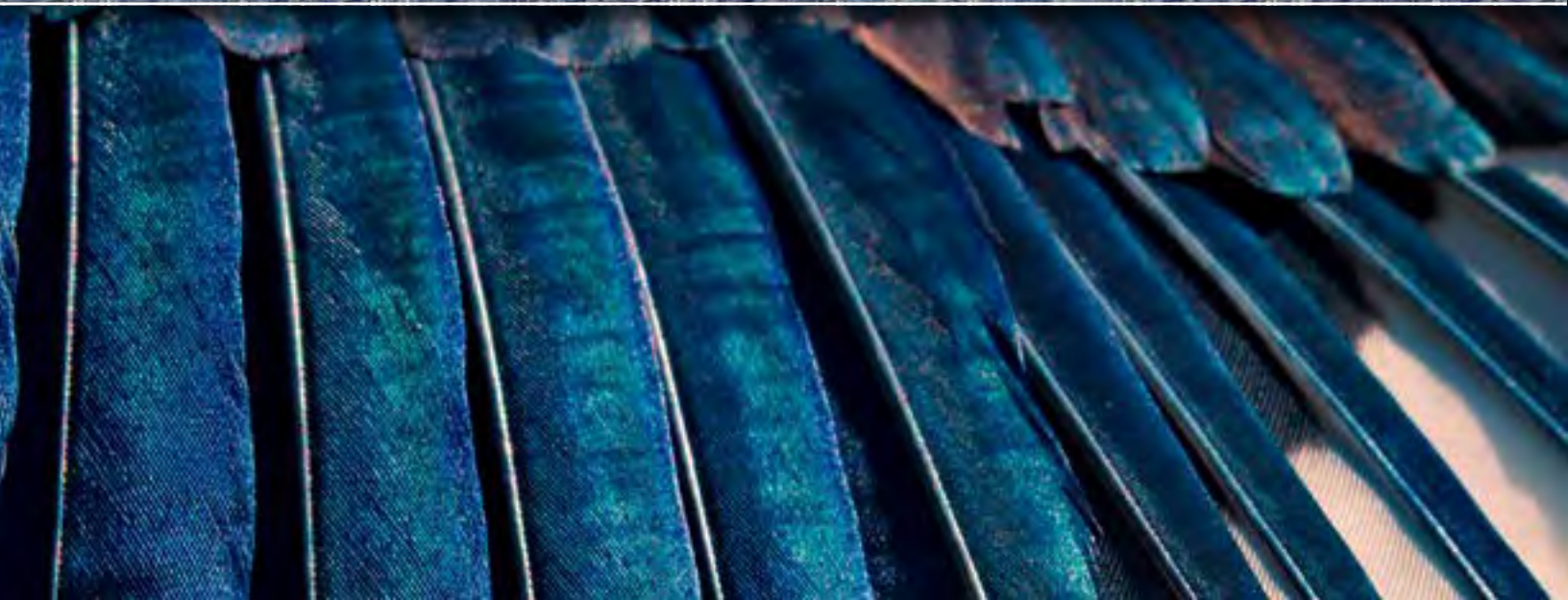


**105X9 EMERGE XIII**

**Color 1360**

Custom Ballroom

<b>A</b>	<b>B</b>	<b>C</b>	<b>D</b>	<b>E</b>	<b>F</b>	<b>G</b>	<b>H</b>	<b>I</b>	<b>J</b>	<b>K</b>
N873	A874	N878	C878	D876	B560	C558	B556	A559	F652	G653







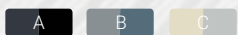
an experiment in the  
blending of soft and  
hard surfaces





101D EMERGE XXII  
Color 2260

Custom Broadloom



X394

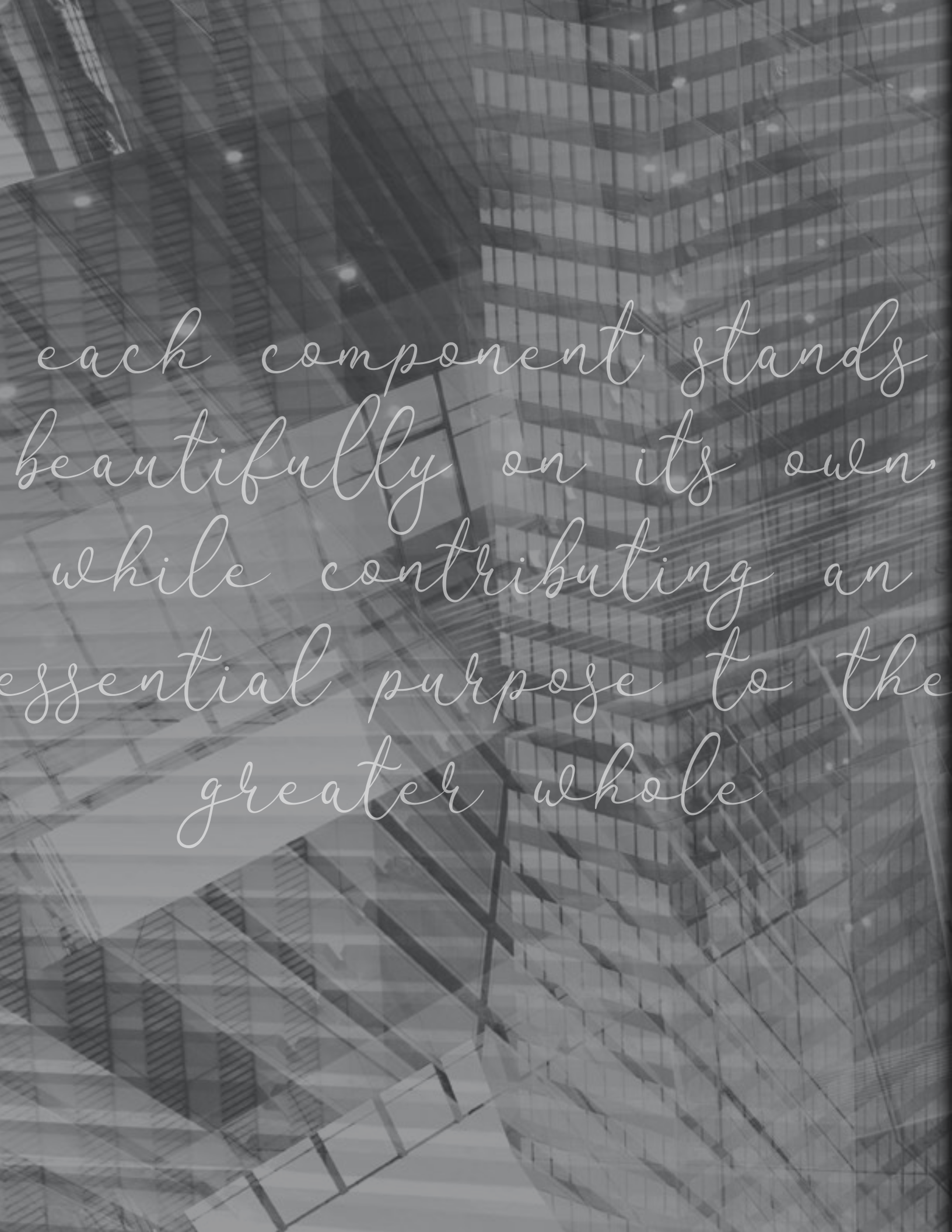
X396

X395









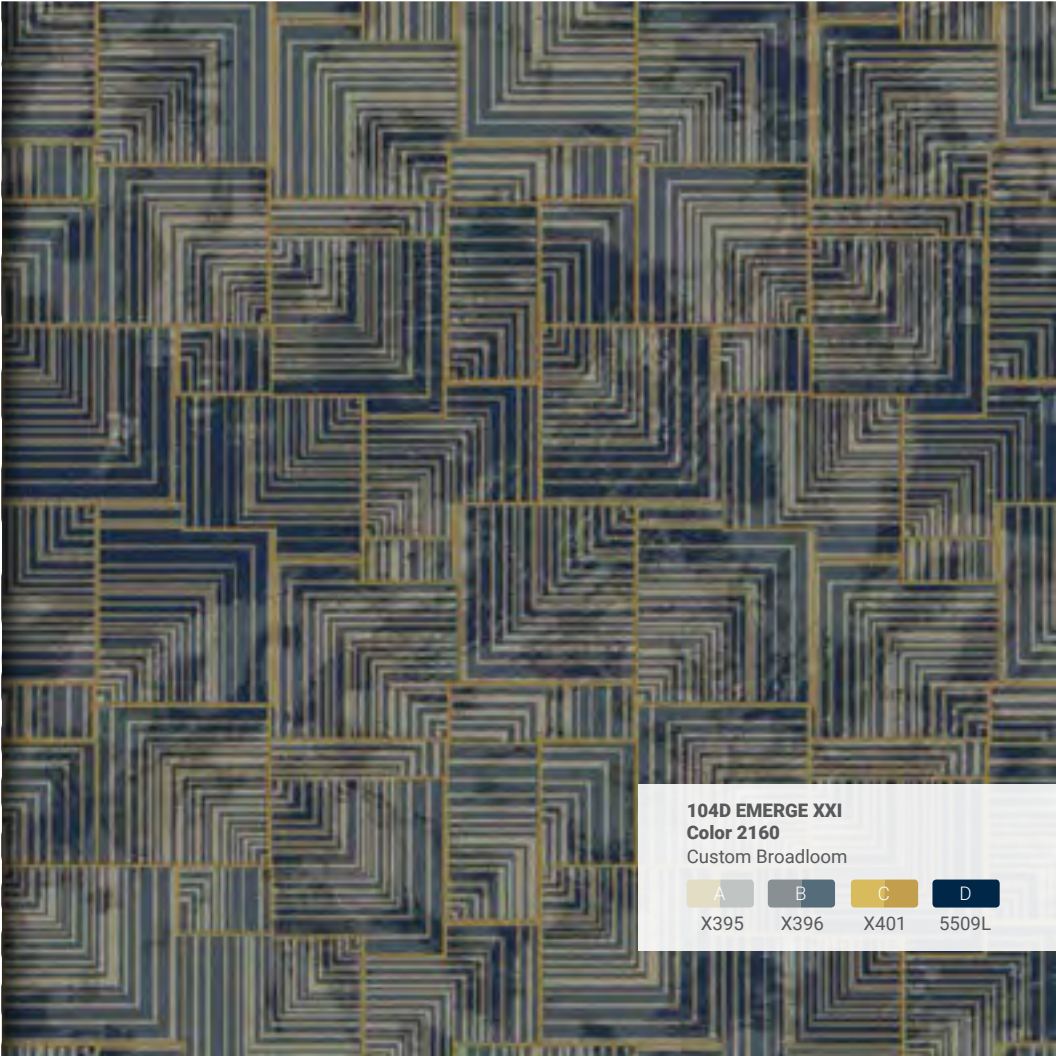
each component stands  
beautifully on its own,  
while contributing an  
essential purpose to the  
greater whole





**107N EMERGE XVIII**  
**Color 1860**  
Custom Broadloom

A	B	C	D
X395L	X401L	X396C	5509L



**104D EMERGE XXI**  
**Color 2160**  
Custom Broadloom

A	B	C	D
X395	X396	X401	5509L





103X9 EMERGE XI  
Color 1160  
Custom Broadloom

A	B	C	D	E	F	G	H	I	J	K
N873	N878	C878	D876	B560	C558	B556	A559	F652	G653	D660









**102D EMERGE XXIII**  
**Color 2360**  
Custom Broadloom

- A X398
- B X392



**102X9 EMERGE X**  
**Color 1060**  
Custom Broadloom

- A N873
- B A874
- C N878
- D C878
- E D876
- F B560
- G C558
- H B556
- I A559
- J F652
- K G653



*combi  
textur  
has*





ness pattern and  
e unlike anyone  
done before





**101X9 EMERGE IX**

**Color 960**

Custom Broadloom

<b>A</b>	<b>B</b>	<b>C</b>	<b>D</b>	<b>E</b>	<b>F</b>
N873	A874	C878	D876	B560	A559













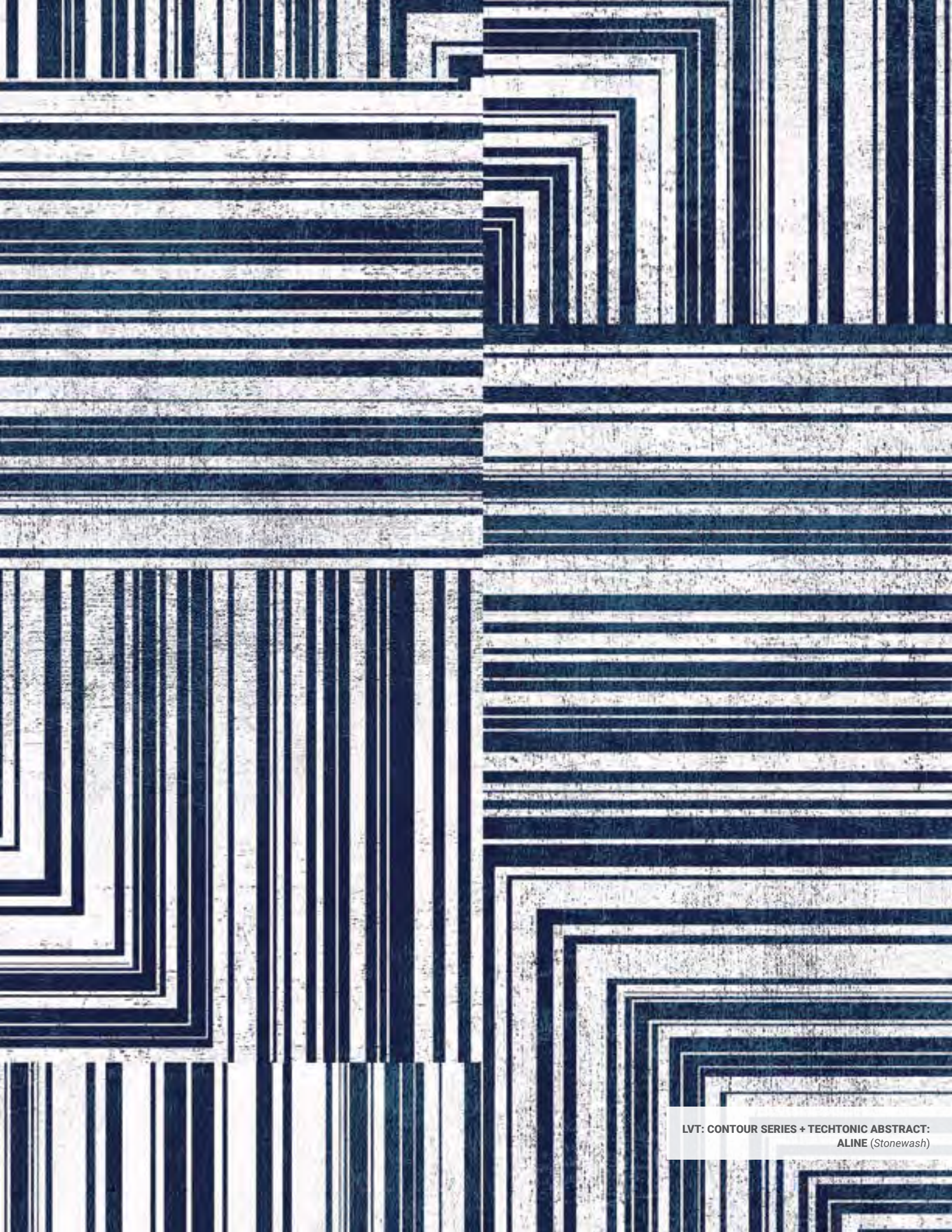


# A disruptive design experience.

Merge/Emerge is a unique breakthrough in LVT that uses the power of co-creation to breathe life into the design process. With this collection, interior designers are able to meld their own creative process with inspirations from some of the most influential design minds of our time. Featuring state-of-the-art digital print technology, the possibilities for customization are as expansive as your imagination. And the results are nothing short of breathtaking.

LVT: CONTOUR® SERIES + TECHTONIC™ ABSTRACT:  
TRANSITIONS (*Skylines*)





LVT: CONTOUR SERIES + TECHTONIC ABSTRACT:  
ALINE (Stonewash)





**101V EMERGE I**  
**Color 160**



**102V EMERGE II**  
**Color 260**



**103V EMERGE III**  
**Color 360**

<b>Construction:</b>	Vivid	Vivid	Vivid
<b>Fiber Content:</b>	100% Solution Dyed Nylon	100% Solution Dyed Nylon	100% Solution Dyed Nylon
<b>Pattern Repeat:</b>	90"W X 180"L	180"W X 180"L	180"W X 180"L
<b>Tufted Pile Weight:</b>	42 oz./sq. yd.	42 oz./sq. yd.	42 oz./sq. yd.
<b>Finished Pile Height:</b>	High: 0.2813" Mid: 0.250" Low: 0.0625"	High: 0.2813" Mid: 0.250" Low: 0.0625"	High: 0.2813" Mid: 0.250" Low: 0.0625"
<b>Primary Backing:</b>	Woven Polypropylene	Woven Polypropylene	Woven Polypropylene
<b>Secondary Backing:</b>	Unitary w/ Actionbac®	Unitary w/ Actionbac	Unitary w/ Actionbac
<b>Total Weight:</b>	Approx. 78 oz./sq. yd.	Approx. 78 oz./sq. yd.	Approx. 78 oz./sq. yd.
<b>Yarn Size:</b>	1360 2-Ply	1360 2-Ply	1360 2-Ply
<b>Standard Width:</b>	15'	15'	15'



**104V EMERGE IV**  
**Color 460**



**105V EMERGE V**  
**Color 560**



**107V EMERGE VII**  
**Color 760**

<b>Construction:</b>	Vivid	Vivid	Vivid
<b>Fiber Content:</b>	100% Solution Dyed Nylon	100% Solution Dyed Nylon	100% Solution Dyed Nylon
<b>Pattern Repeat:</b>	180"W X 180"L	180"W X 173"L	180"W X 180"L
<b>Tufted Pile Weight:</b>	42 oz./sq. yd.	42 oz./sq. yd.	42 oz./sq. yd.
<b>Finished Pile Height:</b>	High: 0.2813" Mid: 0.250" Low: 0.0625"	High: 0.2813" Mid: 0.250" Low: 0.0625"	High: 0.2813" Mid: 0.250" Low: 0.0625"
<b>Primary Backing:</b>	Woven Polypropylene	Woven Polypropylene	Woven Polypropylene
<b>Secondary Backing:</b>	Unitary w/ Actionbac	Unitary w/ Actionbac	Unitary w/ Actionbac
<b>Total Weight:</b>	Approx. 78 oz./sq. yd.	Approx. 78 oz./sq. yd.	Approx. 78 oz./sq. yd.
<b>Yarn Size:</b>	1360 2-Ply	1360 2-Ply	1360 2-Ply
<b>Standard Width:</b>	15'	15'	15'





**105LP EMERGE XIV**  
**Color 1460**



**106LP EMERGE XV**  
**Color 1560**



**107LP EMERGE XVI**  
**Color 1660**

<b>Construction:</b>	Legacy Plus	Legacy Plus	Legacy Plus
<b>Fiber Content:</b>	100% Solution Dyed Nylon	100% Solution Dyed Nylon	100% Solution Dyed Nylon
<b>Pattern Repeat:</b>	180"W X 180"L	90"W X 90"L	72"W X 88.75"L
<b>Tufted Pile Weight:</b>	36 oz. /sq. yd.	36 oz. /sq. yd.	36 oz. /sq. yd.
<b>Finished Pile Height:</b>	High: 0.25"	High: 0.25"	High: 0.25"
<b>Primary Backing:</b>	Woven Polypropylene	Woven Polypropylene	Woven Polypropylene
<b>Secondary Backing:</b>	Unitary w/ Actionbac	Unitary w/ Actionbac	Unitary w/ Actionbac
<b>Total Weight:</b>	Approx. 72 oz. /sq. yd.	Approx. 72 oz. /sq. yd.	Approx. 72 oz. /sq. yd.
<b>Yarn Size:</b>	1360 2-Ply	1360 2-Ply	1360 2-Ply
<b>Standard Width:</b>	15'	15'	15'



**108LP EMERGE XVII**  
**Color 1760**



**105N EMERGE XIX**  
**Color 1960**



**106N EMERGE XX**  
**Color 2060**

<b>Construction:</b>	Legacy Plus	Intrepid	Intrepid
<b>Fiber Content:</b>	100% Solution Dyed Nylon	100% Solution Dyed Nylon	100% Solution Dyed Nylon
<b>Pattern Repeat:</b>	180"W X 180"L	180"W X 180"L	90"W X 180"L
<b>Tufted Pile Weight:</b>	36 oz. /sq. yd.	42 oz. /sq. yd.	42 oz. /sq. yd.
<b>Finished Pile Height:</b>	High: 0.25"	High: 0.25" Mid: 0.1875" Low: 0.0625"	High: 0.25" Mid: 0.1875" Low: 0.0625"
<b>Primary Backing:</b>	Woven Polypropylene	Woven Polypropylene	Woven Polypropylene
<b>Secondary Backing:</b>	Unitary w/ Actionbac	Unitary w/ Actionbac	Unitary w/ Actionbac
<b>Total Weight:</b>	Approx. 72 oz. /sq. yd.	Approx. 78 oz. /sq. yd.	Approx. 78 oz. /sq. yd.
<b>Yarn Size:</b>	1360 2-Ply	1360 2-Ply	1360 2-Ply
<b>Standard Width:</b>	15'	15'	15'





**100X9 EMERGE VIII**  
**Color 860**



**101X9 EMERGE IX**  
**Color 960**



**102X9 EMERGE X**  
**Color 1060**

<b>Construction:</b>	Woven Axminster	Woven Axminster	Woven Axminster
<b>Quality:</b>	7/9	7/9	7/9
<b>Pattern Repeat:</b>	157.43"W X 180"L	157.43"W X 157.33"L	157.43"W X 157.33"L
<b>Fiber Content:</b>	80% Wool, 20% Nylon	80% Wool, 20% Nylon	80% Wool, 20% Nylon
<b>Primary Backing:</b>	Polypropylene/Polyester	Polypropylene/Polyester	Polypropylene/Polyester
<b>Secondary Backing:</b>	Copolymer	Copolymer	Copolymer
<b>Standard Width:</b>	13' 2"	13' 2"	13' 2"



**103X9 EMERGE XI**  
**Color 1160**



**104X9 EMERGE XII**  
**Color 1260**



**105X9 EMERGE XIII**  
**Color 1360**

<b>Construction:</b>	Woven Axminster	Woven Axminster	Woven Axminster
<b>Quality:</b>	7/9	7/9	7/9
<b>Fiber Content:</b>	157.43"W X 157.33"L	157.43"W X 157.33"L	840"W X 600"L
<b>Pattern Repeat:</b>	80% Wool, 20% Nylon	80% Wool, 20% Nylon	80% Wool, 20% Nylon
<b>Primary Backing:</b>	Polypropylene/Polyester	Polypropylene/Polyester	Polypropylene/Polyester
<b>Secondary Backing:</b>	Copolymer	Copolymer	Copolymer
<b>Standard Width:</b>	13' 2"	13' 2"	13' 2"





**107N EMERGE XVIII**  
**Color 1860**



**101D EMERGE XXII**  
**Color 2260**



**102D EMERGE XXIII**  
**Color 2360**

<b>Construction:</b>	Intrepid	Dynamics	Dynamics
<b>Fiber Content:</b>	100% Solution Dyed Nylon	100% Solution Dyed Nylon	100% Solution Dyed Nylon
<b>Pattern Repeat:</b>	90"W X 90"L	90"W X 180"L	90"W X 115.8"L
<b>Tufted Pile Weight:</b>	42 oz./sq. yd.	32 oz./sq. yd.	32 oz./sq. yd.
<b>Finished Pile Height:</b>	High: 0.25" Mid: 0.1875" Low: 0.0625"	High: 0.25" Mid: 0.1875" Low: 0.0625"	High: 0.25" Mid: 0.1875" Low: 0.0625"
<b>Primary Backing:</b>	Woven Polypropylene	Woven Polypropylene	Woven Polypropylene
<b>Secondary Backing:</b>	Unitary w/ Actionbac	Actionbac	Actionbac
<b>Total Weight:</b>	Approx. 78 oz./sq. yd.	Approx. 68 oz./sq. yd.	Approx. 68 oz./sq. yd.
<b>Yarn Size:</b>	1360 2-Ply	1360 2-Ply	1360 2-Ply
<b>Standard Width:</b>	15'	15'	15'



**104D EMERGE XXI**  
**Color 2160**

<b>Construction:</b>	Dynamics
<b>Fiber Content:</b>	100% Solution Dyed Nylon
<b>Pattern Repeat:</b>	180"W X 180"L
<b>Tufted Pile Weight:</b>	32 oz./sq. yd.
<b>Finished Pile Height:</b>	High: 0.25" Mid: 0.1875" Low: 0.0625"
<b>Primary Backing:</b>	Woven Polypropylene
<b>Secondary Backing:</b>	Actionbac
<b>Total Weight:</b>	Approx. 68 oz./sq. yd.
<b>Yarn Size:</b>	1360 2-Ply
<b>Standard Width:</b>	15'





**ALINE (PCAL 10182)**  
**Color: Stonewash**



**FLUX (PCFX 10180)**  
**Color: Oasis**



**TRANSITIONS (PCTA 10181)**  
**Color: Skylines**

---

<b>Construction:</b>	LVT: Contour® Series Abstract	LVT: Contour Series Abstract	LVT: Contour Series Abstract
<b>Classification:</b>	ASTM F1700 Class III Type B	ASTM F1700 Class III Type B	ASTM F1700 Class III Type B
<b>Size:</b>	18" X 18"	18" X 18"	9" X 36"
<b>Total Thickness:</b>	0.120" (3.0 mm)	0.120" (3.0 mm)	0.120" (3.0 mm)
<b>Wear Layer Thickness:</b>	32 mil (0.76 mm)	32 mil (0.76 mm)	32 mil (0.76 mm)
<b>Finish:</b>	Techtonic™	Techtonic	Techtonic
<b>Edge Treatment:</b>	Square Edge (SE)	Square Edge (SE)	Square Edge (SE)
<b>Emboss:</b>	Quarry (QU)	Quarry (QU)	Quarry (QU)
<b>Warranty:</b>	20-Year Limited Commercial Wear	20-Year Limited Commercial Wear	20-Year Limited Commercial Wear









**Tarkett North America**

30000 Aurora Road  
Solon, OH 44139  
800.871.3211

[www.tarkettna.com](http://www.tarkettna.com)

EME01

©2019 Tarkett USA Inc. 05/2019