

Blotted

CUSTOM CARPET

*Artistic
Expression*

Tarkett Hospitality

285 Kraft Drive
Dalton, GA 30721
800.871.3211

www.tarketthospitality.com

© 2022 Tarkett Hospitality 03/22

 **Tarkett** *Hospitality*

Blotted

Artistic Expression

Blotted juxtaposes soft, airy, delicate textures with expressive, erratic lines to create patterns that turn a space into an experience. With a respective nod to Jackson Pollock, the influential American painter who was a significant figure in the abstract expressionist art movement, Tarkett Hospitality gives a fresh, ethereal perspective to the All-over techniques popularized in the 20th century.

Blotted patterns were adapted from artwork created during our design team's monthly creative session, an open-form expression of art using various media and mediums. Abstract paintings created from watercolor, Sumi ink, pen and gouache acrylics led to mark-making that translated well from canvas to floor.

CUSTOMIZABLE

Designers can choose from Axminster woven, Digital Dye Injection (DDI), or tufted constructions, along with a variety of fiber types, textures, colors, and pile weights. The designs can also be made into custom rugs to enhance guest rooms, lobbies, and other open spaces.



The 11 patterns can be customized to fit specific budget and project requirements.



BL10N-680
Intrepid

A	B	C	D
3537	4512	3526	8004



BL4X-680
Axminster

A	B	C	D	E	F	G	H	I
H660	H762	D655	H652	D660	H653	B560	C556	D559



BL5X-680
Axminster

A	B	C	D	E	F	G	H	I	J	K	L	M	N
A558	F652	H762	D655	H652	F766	B556	D660	H653	B560	K654	C556	M656	D559



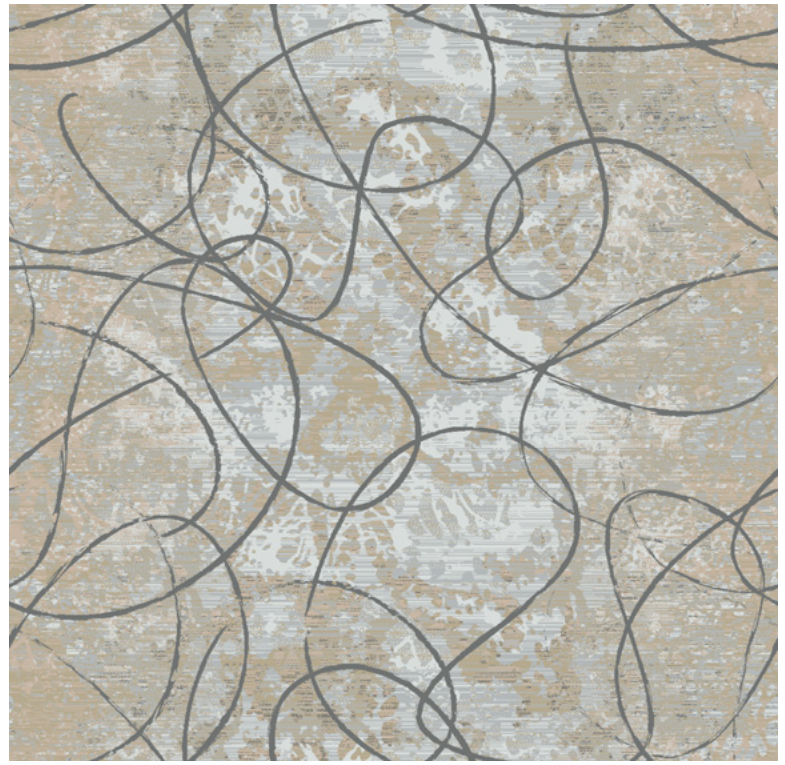
BL11N-680
Intrepid

A	B	C	D
3537	4521	3526	8004



BL1X-680
Axminster

A	B	C	D
A556	A558	H652	B556
E	F	G	
H653	K654	C556	



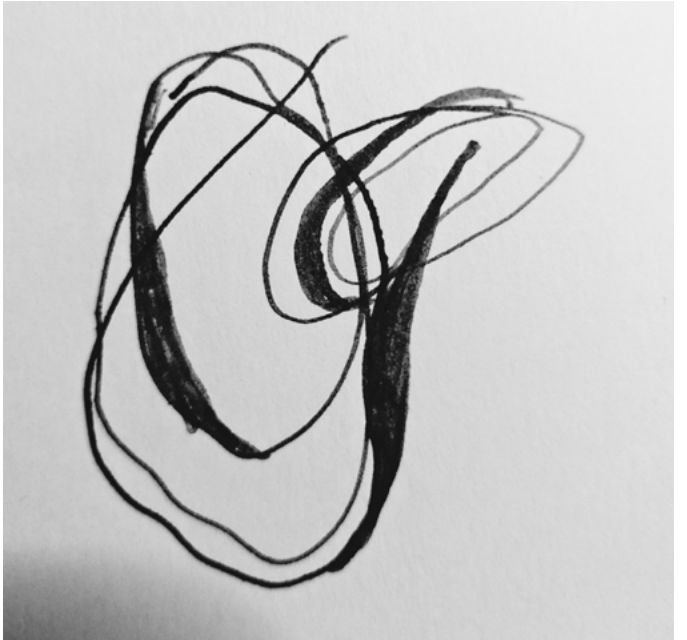
BL2X-680
Axminster

A	B	C	D	E
A558	H652	B556	H653	C556



BL3X-680
Axminster

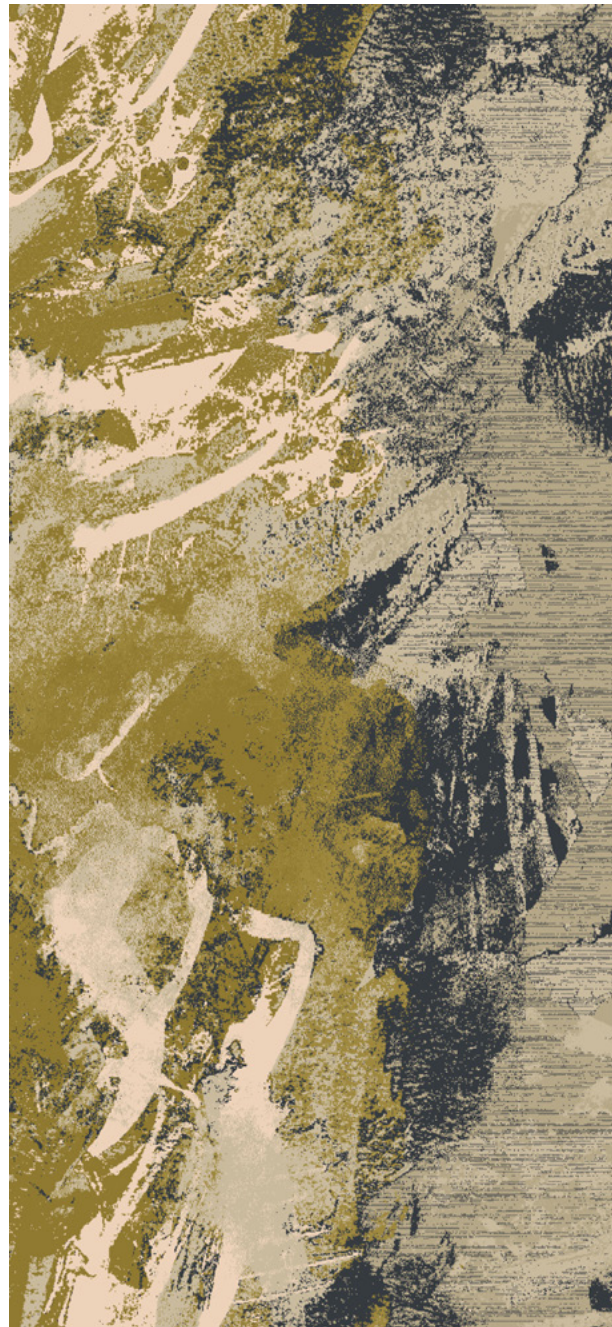
A	B	C	D	E	F	G	H	I	J
A556	A558	F652	H762	D655	H652	B556	H653	B560	C556





BL6V-680
Vivid

A	B	C	D	E	F	G	K
3523	8537	8004	8002	3526	4512	8523	3537



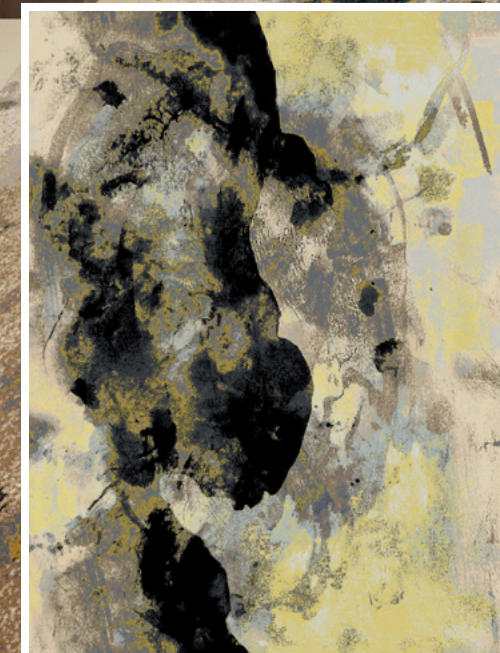
BL9N-680
Intrepid

A	B	C	D
3537	4512	3526	8004



BL8V-680
Vivid

B	C	D	E	F	G	H	I	J
8537	8004	8002	3526	4512	8523	3507	X392	8502
K	L							
3537	8510							



BL7V-680
Vivid

A	B	C	D	E	F	G	H	I	J	K
3523	8537	8004	8002	3526	4512	8523	3507	X392	8502	3537

Tailored Solutions

Flooring That Fits Your Needs

Tarkett Hospitality offers an industry-leading range of carpet constructions that make it easy to customize your floor to fit your needs. Your carpet will deliver the right look, the right performance level for the space and the right price point.

Your experience will be easy as well, because all of our designers are experts in designing for every type of construction. You will work with one designer for your entire project, no matter which carpet construction you choose.

Customize any of our soft surfaces, or choose a beautiful running line design. With an array of hard surface products to complement your carpet and complete the space, you are assured the right solution for every project.



COLOR & DETAIL



Axminster/Sculpt

Endless design possibilities in a luxurious woven construction, made with premium wool and nylon. Our carpet provides superior beauty, crisp clarity and exceptional longevity. With our Sculpt technology, you can also enhance your design with multilevel texturing and depth.
Compare to: Axminster (Woven)

Vivid

Richly textured, beautifully defined patterns with high durability. Choose Vivid to create striking designs in up to 12 colors – the cut and loop tufted construction can deliver the effect of 24 colors, for patterns that are wondrously complex, textured and precise.
Compare to: High Definition CYP

DDI (Digital Dye Injection)

Unlimited pattern potential in a durable tufted construction. Your design is deeply injected into the carpet base, with controlled color placement that creates a clear, precise pattern. Choose from cut pile or one of three cut and loop textures for added dimension.
Compare to: Print or Injection Dye

Legacy Plus

Detailed, clean patterns delivering both design flexibility and high performance to enhance any public space. Our Legacy Plus construction provide plush comfort and an opulent aesthetic that beautifies ballrooms and busy corridors equally well.
Compare to: CYP (All cut, 36 oz)

Intrepid

For well-appointed mid-size public spaces and guest rooms, in a cut and loop construction that enhances the texture of your design. With its high face weight and precise patterning, the Intrepid construction gives spaces a feeling of luxury underfoot.
Compare to: Colorpoint, CYP Textured

Dynamics

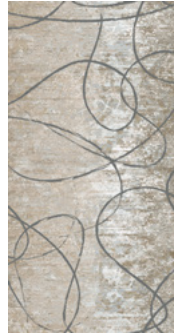
A beautiful balance of design, durability and value to suit any area, from guest rooms up to large public spaces. Dynamics provides an incredible range of tonal design possibilities, as well as an infinite play in pile heights to give spaces rich textural depth.
Compare to: Infinity



	COLORS	PRICE	USAGE	OUNCE WEIGHT	LEAD TIME*	MINIMUM ORDER	TEXTURE
	16	\$\$\$\$	All Public Spaces Guest Rooms	2 & 3 ply in 7-10 row		250 SY	All Cut
	12	\$\$\$\$	Corridors Rugs All Public Spaces Smaller Rooms	42 - 48 Oz		250 SY	Cut & Loop
	14	\$\$\$	All Public Spaces Guest Rooms	36 Oz		250 SY	All Cut OR Textured Base
	6-8	\$\$\$	Corridors Guest Rooms Small-Mid Sized Public Spaces Ballrooms/Large Public Spaces	36 - 44 Oz		250 SY	All Cut
	4-6	\$\$	Mid Sized Public Spaces High-End Guest Rooms Corridors	36 - 42 Oz		250 SY	Cut & Loop
	4	\$\$	Mid Sized Public Spaces Guest Rooms Corridors Ballrooms/Large Public Spaces	32 - 42 Oz		250 SY	Cut & Loop

* Lead times are approximate and may vary.

Blotted Custom Carpet



BLOTTED BL1X-680

Construction: Woven Axminster
Fiber Content: 80% Wool / 20% Nylon
Dye Method: Yarn Dyed
Tufted Pile Weight: 40 oz. Per Sq. Yard
Finished Pile Height: .280 in.
Quality: 8 Row / 7 Pitch
Primary Backing: Polypropylene
Secondary Backing: Copolymer
Total Weight: 52 oz.
Standard Width: 13 ft. 2 in.
Pattern Repeat: 78.86 in W x 155.00 in L



BLOTTED BL2X-680

Construction: Woven Axminster
Fiber Content: 80% Wool / 20% Nylon
Dye Method: Yarn Dyed
Tufted Pile Weight: 40 oz. Per Sq. Yard
Finished Pile Height: .280 in.
Quality: 8 Row / 7 Pitch
Primary Backing: Polypropylene
Secondary Backing: Copolymer
Total Weight: 52 oz.
Standard Width: 13 ft. 2 in.
Pattern Repeat: 157.71 in W x 155.00 in L



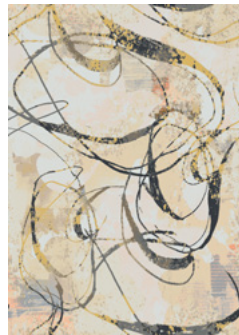
BLOTTED BL3X-680

Construction: Woven Axminster
Fiber Content: 80% Wool / 20% Nylon
Dye Method: Yarn Dyed
Tufted Pile Weight: 40 oz. Per Sq. Yard
Finished Pile Height: .280 in.
Quality: 8 Row / 7 Pitch
Primary Backing: Polypropylene
Secondary Backing: Copolymer
Total Weight: 52 oz.
Standard Width: 13 ft. 2 in.
Pattern Repeat: 157.71 in W x 210.00 in L



BLOTTED BL4X-680

Construction: Woven Axminster
Fiber Content: 80% Wool / 20% Nylon
Dye Method: Yarn Dyed
Tufted Pile Weight: 40 oz. Per Sq. Yard
Finished Pile Height: .280 in.
Quality: 8 Row / 7 Pitch
Primary Backing: Polypropylene
Secondary Backing: Copolymer
Total Weight: 52 oz.
Standard Width: 13 ft. 2 in.
Pattern Repeat: 78.86 in W x 69.00 in L



BLOTTED BL5X-680

Construction: Woven Axminster
Fiber Content: 80% Wool / 20% Nylon
Dye Method: Yarn Dyed
Tufted Pile Weight: 40 oz. Per Sq. Yard
Finished Pile Height: .280 in.
Quality: 8 Row / 7 Pitch
Primary Backing: Polypropylene
Secondary Backing: Copolymer
Total Weight: 52 oz.
Standard Width: 13 ft. 2 in.
Pattern Repeat: 157.71 in W x 195.12 in L



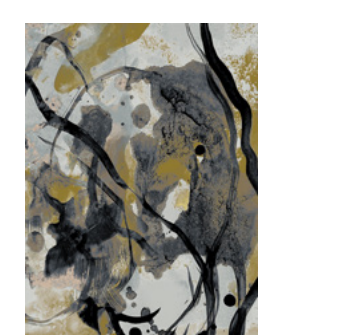
BLOTTED BL6V-680

Construction: Vivid (11 x 11 Cut/Loop CYP)
Fiber Content: 100% C.F. Lextron Enviro-Green
Dye Method: Solution Dyed Nylon
Tufted Pile Weight: 42 oz. Per Sq. Yard
Finished Pile Height: .281" Cut / .250" High Loop / .062" Low Loop
Quality: 11 Stitches Per Inch
Primary Backing: Woven Polypropylene
Secondary Backing: Unitary Action Bac
Total Weight: 78 oz.
Standard Width: 15 ft.
Pattern Repeat: 90 in W x 96 in L



BLOTTED BL7V-680

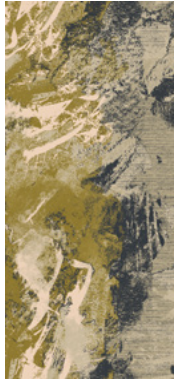
Construction: Vivid (11 x 11 Cut/Loop CYP)
Fiber Content: 100% C.F. Lextron Enviro-Green
Dye Method: Solution Dyed Nylon
Tufted Pile Weight: 42 oz. Per Sq. Yard
Finished Pile Height: .281" Cut / .250" High Loop / .062" Low Loop
Quality: 11 Stitches Per Inch
Primary Backing: Woven Polypropylene
Secondary Backing: Unitary Action Bac
Total Weight: 78 oz.
Standard Width: 15 ft.
Pattern Repeat: 90 in W x 96 in L



BLOTTED BL8V-680

Construction: Vivid (11 x 11 Cut/Loop CYP)
Fiber Content: 100% C.F. Lextron Enviro-Green
Dye Method: Solution Dyed Nylon
Tufted Pile Weight: 42 oz. Per Sq. Yard
Finished Pile Height: .281" Cut / .250" High Loop / .062" Low Loop
Quality: 11 Stitches Per Inch
Primary Backing: Woven Polypropylene
Secondary Backing: Unitary Action Bac
Total Weight: 78 oz.
Standard Width: 15 ft.
Pattern Repeat: 180.00 in W x 240.00 in L

Blotted Custom Carpet



BLOTTED BL9N-680

Construction:	Intrepid Multi-Level Loop Tip Shear
Fiber Content:	100% C.F. Lextron Enviro-Green
Dye Method:	Solution Dyed Nylon
Tufted Pile Weight:	42 oz. Per Sq. Yard
Finished Pile Height:	.250" High/.187" Med./.062" Low
Quality:	7 Stitches Per Inch
Primary Backing:	Woven Polypropylene
Secondary Backing:	Unitary Action Bac
Total Weight:	78 oz.
Standard Width:	15 ft.
Pattern Repeat:	90 in. W x 196 in. L



BLOTTED BL10N-680

Construction:	Intrepid Multi-Level Loop Tip Shear
Fiber Content:	100% C.F. Lextron Enviro-Green
Dye Method:	Solution Dyed Nylon
Tufted Pile Weight:	42 oz. Per Sq. Yard
Finished Pile Height:	.250" High/.187" Med./.062" Low
Quality:	7 Stitches Per Inch
Primary Backing:	Woven Polypropylene
Secondary Backing:	Unitary Action Bac
Total Weight:	78 oz.
Standard Width:	15 ft.
Pattern Repeat:	180 in. W x 257.14 in. L



BLOTTED BL11N-680

Construction:	Intrepid Multi-Level Loop Tip Shear
Fiber Content:	100% C.F. Lextron Enviro-Green
Dye Method:	Solution Dyed Nylon
Tufted Pile Weight:	42 oz. Per Sq. Yard
Finished Pile Height:	.250" High/.187" Med./.062" Low
Quality:	7 Stitches Per Inch
Primary Backing:	Woven Polypropylene
Secondary Backing:	Unitary Action Bac
Total Weight:	78 oz.
Standard Width:	15 ft.
Pattern Repeat:	90 in. W x 90 in. L



The drip-painting techniques used by Pollock are stunning, never allowing the eye to relax. Our use of softer mediums and open spaces gives breath to the all-over designs. While still chaotic, the patterns leave you with a sense of unwinding and release that complements the more relaxed nature of today's hospitality environments.