

nowHAUS Collection

HOSPITALITY BROADLOOM, AXMINSTER & LVT

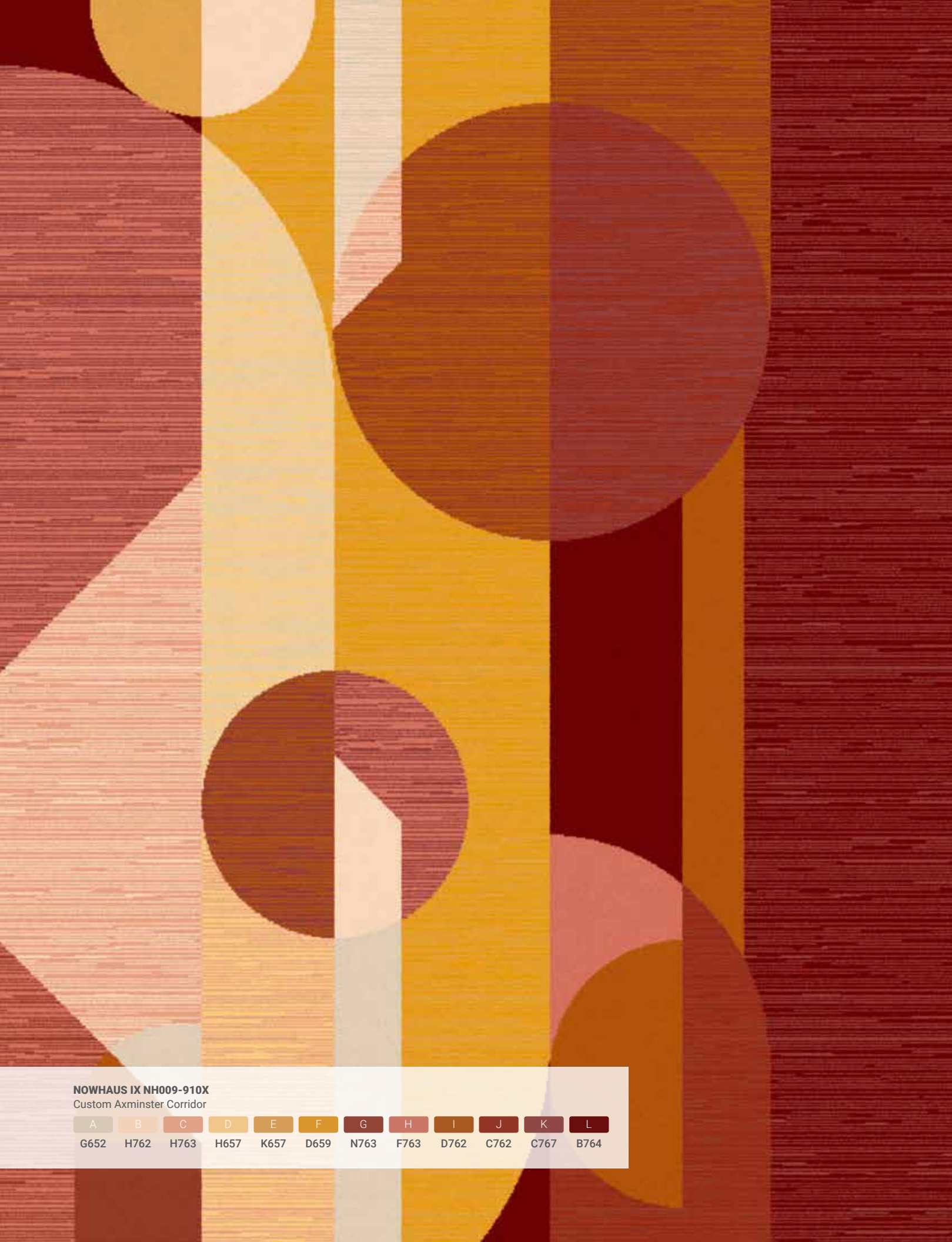
Passion.
Purpose.
Progress.

 **Tarkett**

Pairing
essential
function
with joyful
beauty.

Bauhaus philosophy was arguably the most significant design movement of the modern age, combining industrial craftsmanship with the visual arts, mass production with thoughtful detail, and utilitarian function with beautiful aesthetic. At Tarkett, we honor the Bauhaus influence every day, with more than a century-long heritage of leading innovation, best-in-class custom design, and an unwavering commitment to simple, circular economy.

BAUHAUS



NOWHAUS IX NH009-910X
Custom Axminster Corridor

- | | | | | | | | | | | | |
|------|------|------|------|------|------|------|------|------|------|------|------|
| A | B | C | D | E | F | G | H | I | J | K | L |
| G652 | H762 | H763 | H657 | K657 | D659 | N763 | F763 | D762 | C762 | C767 | B764 |



NOWHAUS VI NH006-610D
Custom Guestroom

- | | | |
|------|------|------|
| A | B | C |
| 7501 | X395 | 3537 |

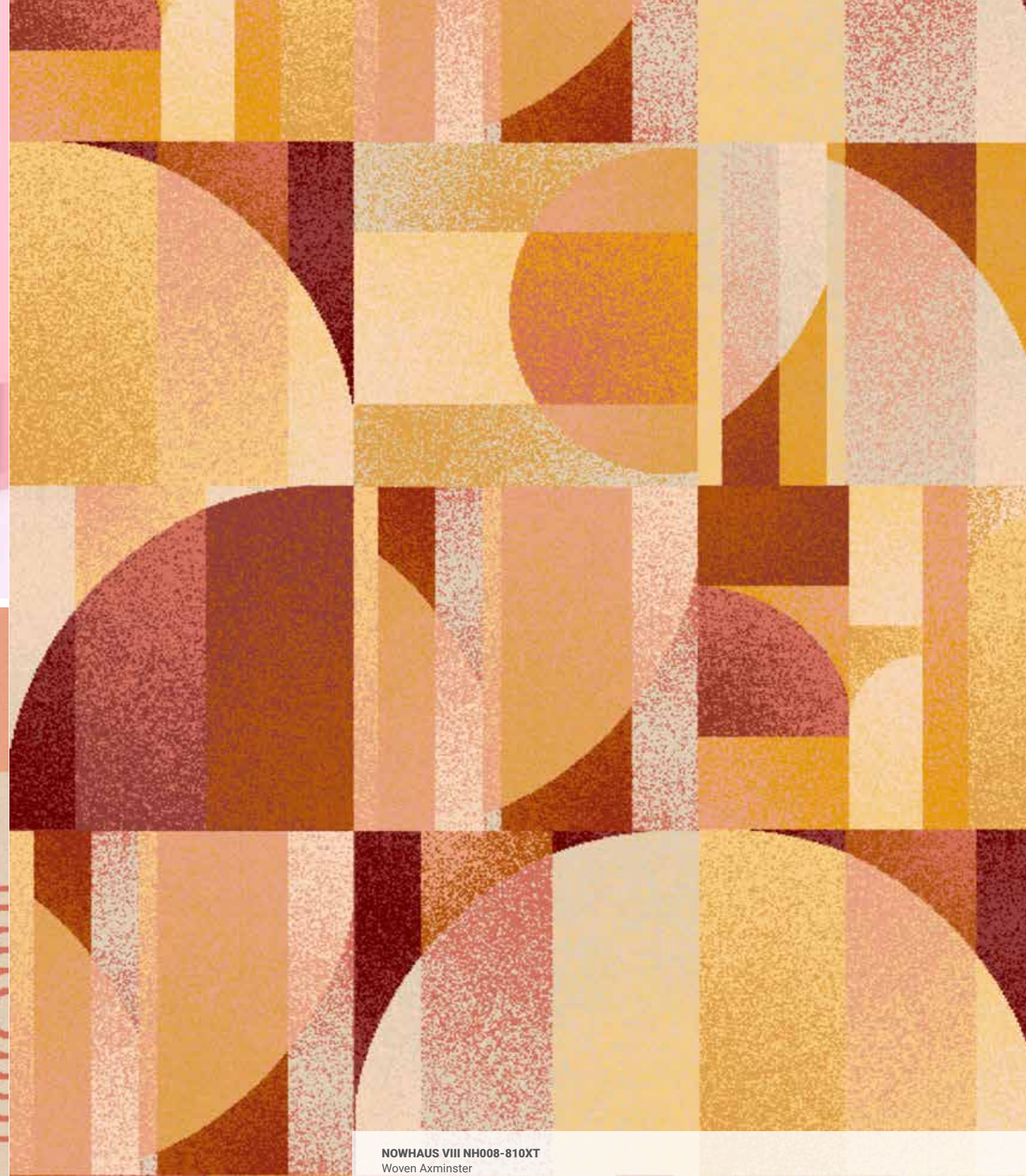


Art +
Industry



NOWHAUS X NH010-1010S
Custom Axminster Sculpt

- | | | | | | | | | | |
|------|------|------|------|------|------|------|------|------|------|
| A | B | C | D | E | F | G | H | I | J |
| G652 | H762 | H763 | H657 | K657 | F763 | G652 | H762 | H763 | H657 |



NOWHAUS VIII NH008-810XT
Woven Axminster

- | | | | | | | | | | | | |
|------|------|------|------|------|------|------|------|------|------|------|------|
| A | B | C | D | E | F | G | H | I | J | K | L |
| G652 | H762 | H763 | H657 | K657 | D659 | N763 | F763 | D762 | C762 | C767 | B764 |

“Progress is not
in enhancing
what is, but in
advancing toward
what will be.”

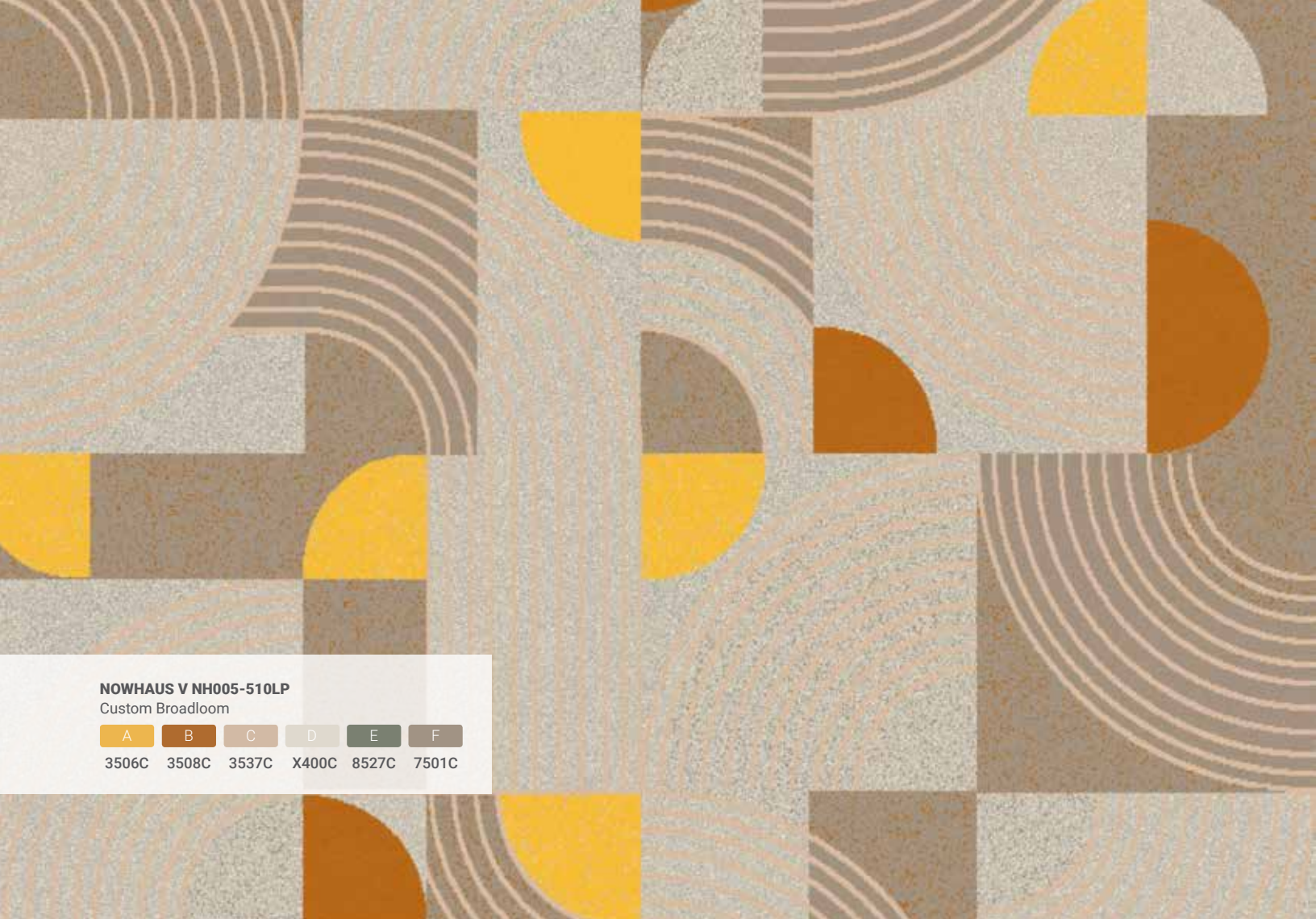
KHALIL GIBRAN

NOWHAUS | NH001-110V
Custom Corridor

A	B	C	D	E	F	G	H
8527	1502	X399	3503	3537	X400	3508	7501

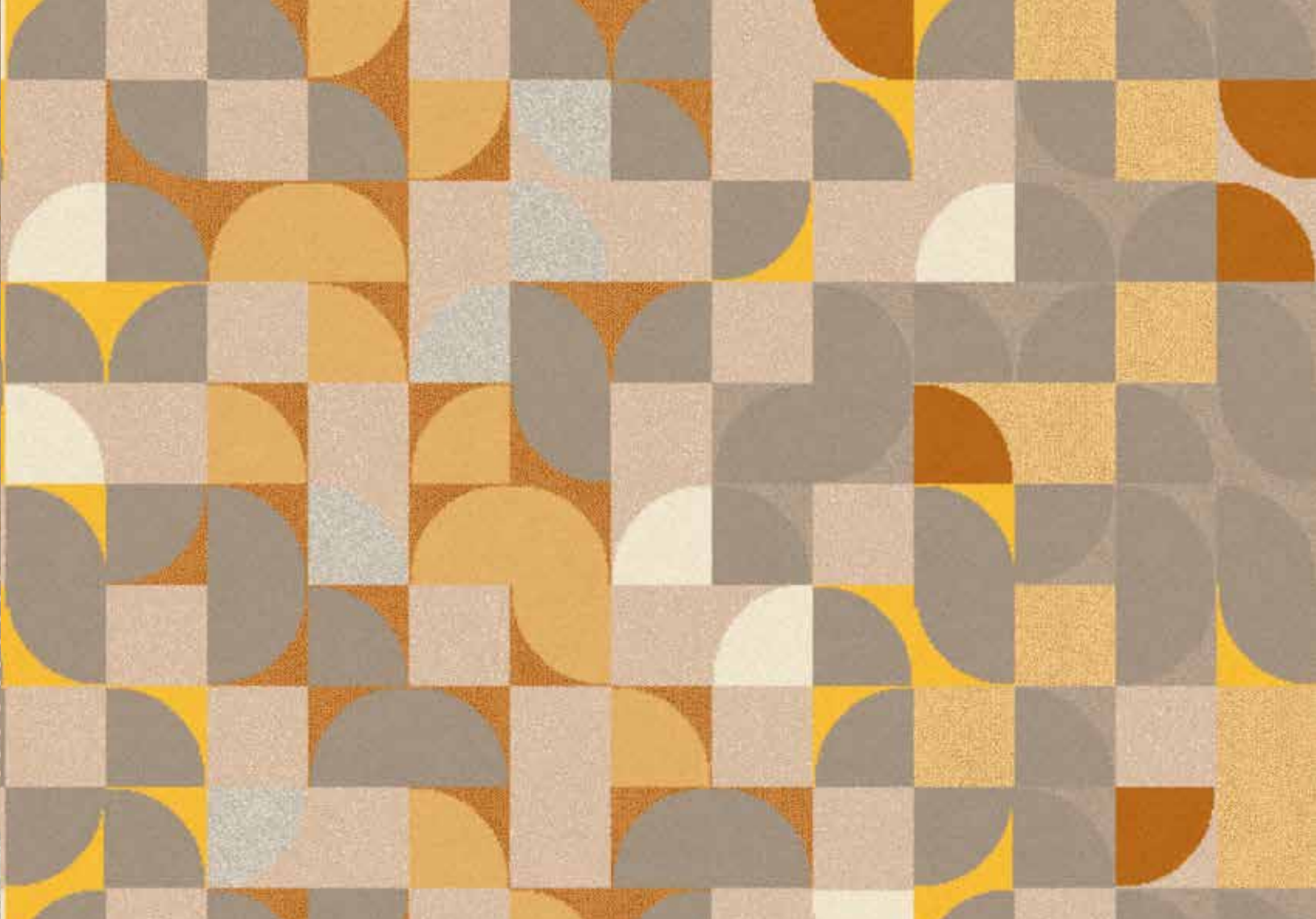
NOWHAUS | NH001-110V
Custom Corridor

A	B	C	D	E	F	G	H
8527	1502	X399	3503	3537	X400	3508	7501



NOWHAUS V NH005-510LP
Custom Broadloom

- | | | | | | |
|-------|-------|-------|-------|-------|-------|
| A | B | C | D | E | F |
| 3506C | 3508C | 3537C | X400C | 8527C | 7501C |



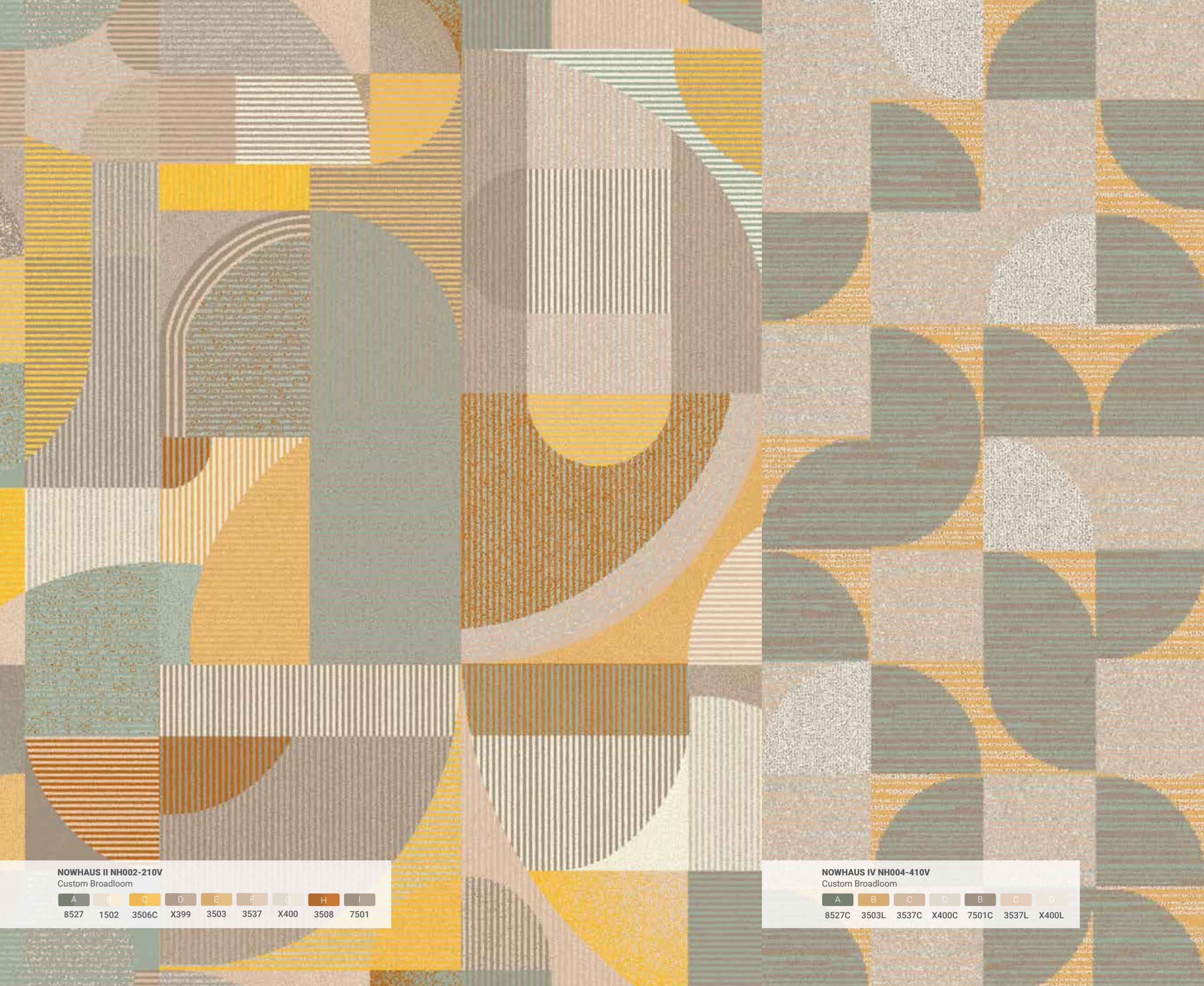
NOWHAUS VII NH007-710X
Custom Axminster Broadloom

- | | | | | | |
|------|------|------|------|------|------|
| A | B | C | D | E | F |
| G652 | H762 | H763 | H657 | K657 | F763 |



NOWHAUS III NH003-310V
Custom Broadloom

- | | | | | | | | | | | |
|-------|-------|-------|-------|-------|-------|-------|-------|-------|-------|-------|
| A | B | C | D | E | F | G | H | I | J | K |
| 1502C | 3506C | X399C | 3503L | 3537C | X400C | 3508C | 7501C | 3503L | 3537L | 3508L |



NOWHAUS II NH002-210V
Custom Broadloom

- | | | | | | | | | |
|------|------|-------|------|------|------|------|------|------|
| A | B | C | D | E | F | G | H | I |
| 8527 | 1502 | 3506C | X399 | 3503 | 3537 | X400 | 3508 | 7501 |

NOWHAUS IV NH004-410V
Custom Broadloom

- | | | | | | | |
|-------|-------|-------|-------|-------|-------|-------|
| A | B | C | D | B | C | D |
| 8527C | 3503L | 3537C | X400C | 7501C | 3537L | X400L |



LVT: CONTOUR SERIES + TECHTONIC:
ARTFORM (Koralle)



LVT: CONTOUR SERIES + TECHTONIC:
TERAZZO (Rose Gold)



NOWHAUS II NH002-210V
Custom Broadloom

A	B	C	D	E	F	G	H	I
8527	1502	3506C	X399	3503	3537	X400	3508	7501

LVT: CONTOUR SERIES + TECHTONIC:
TERAZZO (Rose Gold)

①

②

③

⑥

④

⑤

⑦

⑧

⑨

⑩

⑪

⑫

⑬



NOWHAUS I
NH001-110V



NOWHAUS II
NH002-210V



NOWHAUS III
NH003-310V

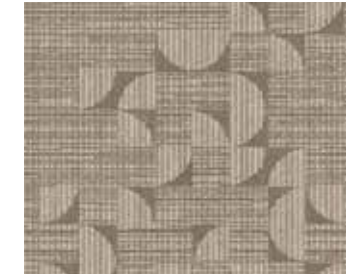
Construction:	Vivid	Vivid	Vivid
Fiber Content:	100% Solution Dyed Nylon	100% Solution Dyed Nylon	100% Solution Dyed Nylon
Pattern Repeat:	90"W X 180"L	90"W X 90"L	60"W X 72"L
Tufted Pile Weight:	42 oz. / sq. yd.	42 oz. / sq. yd.	42 oz. / sq. yd.
Finished Pile Height:	High: 0.2813" Mid: 0.250" Low: 0.0625"	High: 0.2813" Mid: 0.250" Low: 0.0625"	High: 0.2813" Mid: 0.250" Low: 0.0625"
Primary Backing:	Woven Polypropylene	Woven Polypropylene	Woven Polypropylene
Secondary Backing:	Unitary w/ Actionbac®	Unitary w/ Actionbac®	Unitary w/ Actionbac®
Total Weight:	Approx. 78 oz. / sq. yd.	Approx. 78 oz. / sq. yd.	Approx. 78 oz. / sq. yd.
Yarn Size:	1360 2-Ply	1360 2-Ply	1360 2-Ply
Standard Width:	15'	15'	15'



NOWHAUS IV
NH004-410V



NOWHAUS V
NH005-510LP



NOWHAUS VI
NH007-710X

Construction:	Vivid	Legacy Plus	Dynamics
Fiber Content:	100% Solution Dyed Nylon	100% Solution Dyed Nylon	100% Solution Dyed Nylon
Pattern Repeat:	36"W X 36"L	90"W X 90"L	24"W X 57"L
Tufted Pile Weight:	42 oz. / sq. yd.	36 oz. / sq. yd.	32 oz. / sq. yd.
Finished Pile Height:	High: 0.2813" Mid: 0.250" Low: 0.0625"	High: 0.25"	High: 0.25" Mid: 0.1875" Low: 0.0625"
Primary Backing:	Woven Polypropylene	Woven Polypropylene	Woven Polypropylene
Secondary Backing:	Unitary w/ Actionbac®	Unitary w/ Actionbac®	Actionbac®
Total Weight:	Approx. 78 oz. / sq. yd.	Approx. 72 oz. / sq. yd.	Approx. 68 oz. / sq. yd.
Yarn Size:	1360 2-Ply	1360 2-Ply	1360 2-Ply
Standard Width:	15'	15'	12'



NOWHAUS VII
NH007-710X



NOWHAUS VIII
NH008-810XT



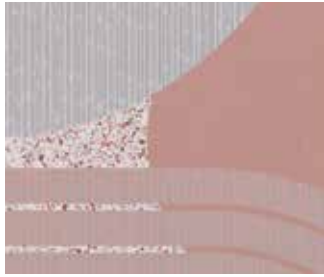
NOWHAUS IX
NH009-910X

Construction:	Woven Axminster	Woven Axminster	Woven Axminster
Quality:	7/8	7/9	7/8
Fiber Content:	80% Wool, 20% Nylon	80% Wool, 20% Nylon	80% Wool, 20% Nylon
Pattern Repeat:	78.86"W X 78.75"L	78.86"W X 120"L	78.86"W X 144"L
Primary Backing:	Polypropylene/Polyester	Polypropylene/Polyester	Polypropylene/Polyester
Secondary Backing:	Copolymer	Copolymer	Copolymer
Standard Width:	13' 2"	13' 2"	13' 2"



NOWHAUS X
NH010-1010S

Construction:	Woven Axminster Sculpt
Quality:	7/9
Fiber Content:	80% Wool, 20% Nylon
Pattern Repeat:	78.86"W X 78.67"L
Primary Backing:	Polypropylene/Polyester
Secondary Backing:	Copolymer
Standard Width:	13' 2"



ARTFORM (PCAF10240)
Color: Koralle



TERAZZO (PCTZ10241)
Color: Rose Gold

Construction:	LVT: Contour® Series	LVT: Contour® Series
Classification:	ASTM F1700 Class III Type B	ASTM F1700 Class III Type B
Size:	18" X 18"	18" X 18"
Total Thickness:	0.120" (3.0mm)	0.120" (3.0mm)
Wear Layer Thickness:	32 mil (0.76mm)	32 mil (0.76mm)
Finish:	Techtonic™	Techtonic™
Edge Treatment:	Square Edge (SE)	Square Edge (SE)
Emboss:	Quarry (QU)	Quarry (QU)
Warranty:	20-Year Limited Commercial Wear	20-Year Limited Commercial Wear



PRODUCTS USED IN TARKETT SOLUTION SPECTRUM PALETTE

1. Soft Surface/ nowHAUS/ 20204-3-2
2. Soft Surface/ nowHAUS/ 20204-5-2
3. Soft Surface/ nowHAUS/ 20204-7-2
4. LVT/ ProGen/ Tannin Walnut (Gris)
5. LVT/ ProGen/ West Oak (Mountane)
6. Finishing Accessories/ Metal Edge (179 Steel)
7. Rubber Tile/ Mesto Configurations (Golden Slumber Light)
8. Finishing Accessories/ Slim Line Transitions SLT-176-H (Brass)
9. Rubber Tile/ Mesto Configurations (Dragons Breath Dark)
10. Wall Base/ Masquerade®/ Terrazzo PCTZ 10241 QU (Rose Gold)
11. Wall Base/ Millwork/ Reveal MW-176-F6 (Brass)
12. Composition Tile/ Cortina Grande CG528 (Pom Poms)
13. LVT/ Collections Infinies™/ Terrazzo PCTZ 10241 QU (Rose Gold)





Tarkett North America

30000 Aurora Road
Solon, OH 44139
800.871.3211

www.tarkettna.com

NOW01

©2019 Tarkett USA Inc. 10/2019