




Lexmark + Hospitality
800.871.3211 | lexmarkhospitality.com



blume

Tempt Concept Collection

Lexmark + Hospitality



Blush and crimson are blended with cream to create an ethereal hint of a flower without the stigma of being old fashioned and will add a fresh pop to stark modern spaces.

+

Vintage-inspired florals burst from a deep moody blue background creating the dramatic appeal of Blume.

blume



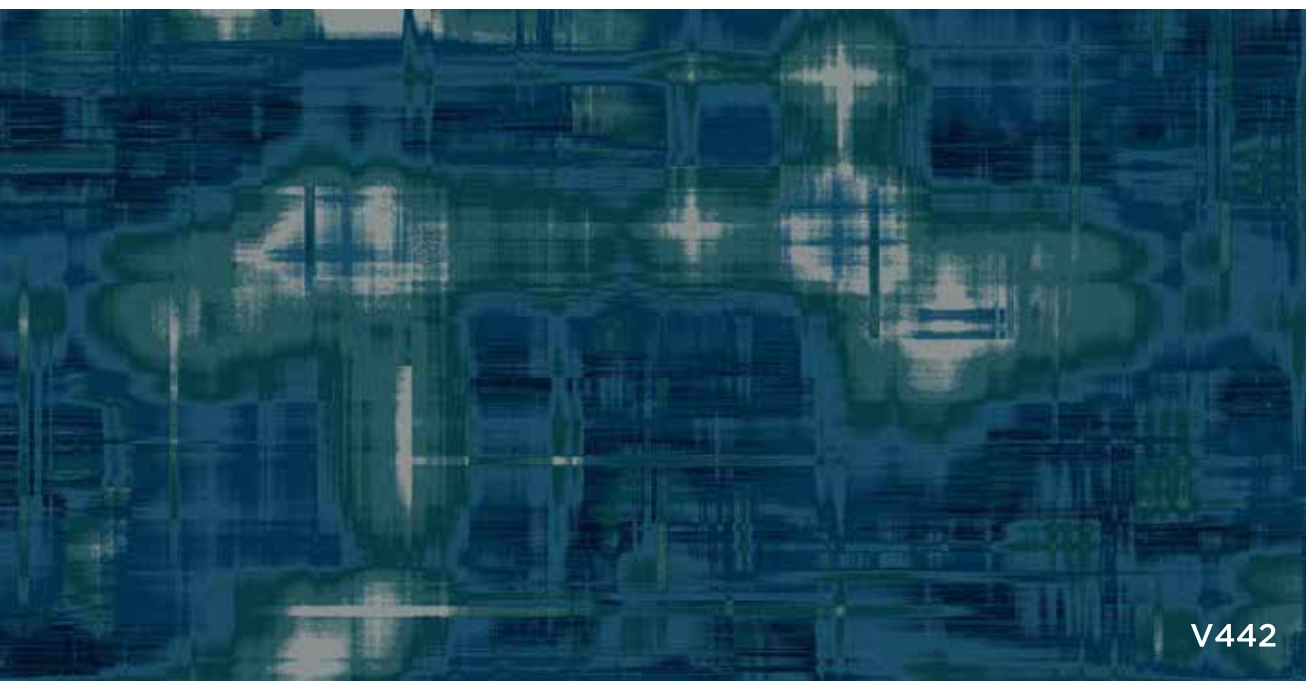




V438



V440



V442









V439



V441

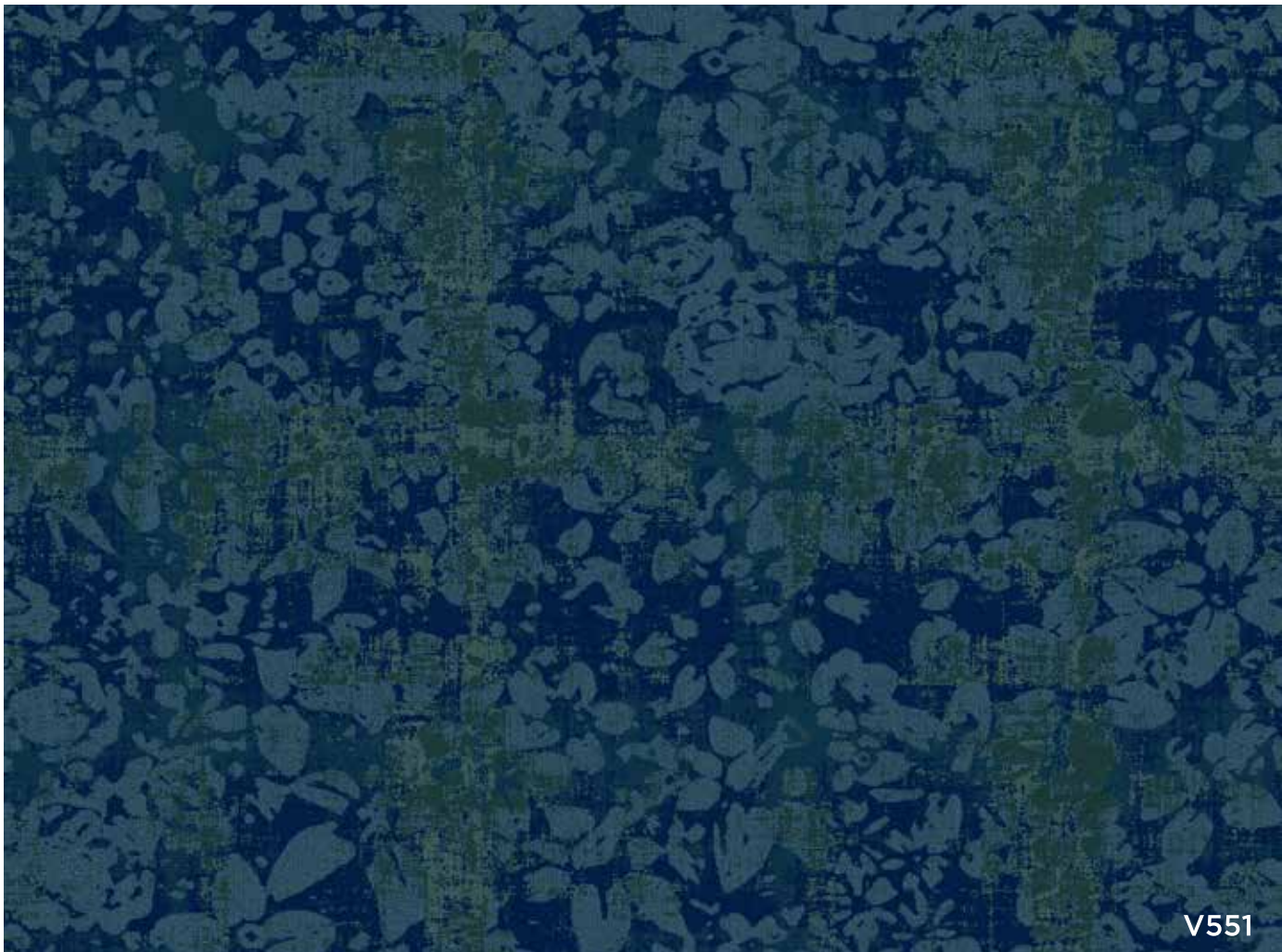


V550

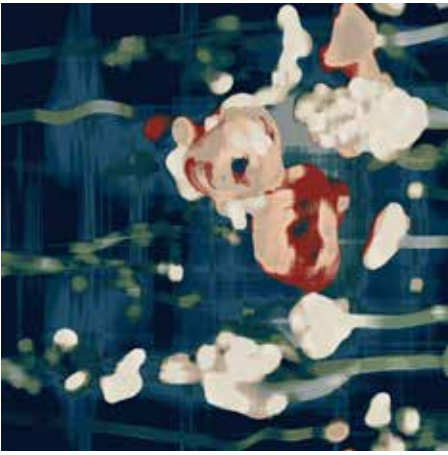




D1589



V551



A	2041	I	8502
B	5509		
C	5510		
D	4089		
E	4007		
F	X399		
G	1502		
H	3537		

V438 BLUME I		COLOR 660
Construction: Vivid - Cut/Loop	Primary Backing: Woven Polypropylene	
Fiber Content: 100% Solution Dyed Nylon	Secondary Backing: Actionbac®	
Pattern Repeat: 90" x 90"	Total Weight: Apx. 78 oz. sq. yd.	
Tufted Pile Weight: 42 oz. sq. yd.	Yarn Size: 1360 2 ply	
Finished Pile Height: Apx. 0.2813" 0.25" 0.0625"	Standard Width: 15'	



A	2041	I	4003
B	5509	J	8502
C	5510		
D	4089		
E	4007		
F	X399		
G	1502		
H	3537		

V439 BLUME II		COLOR 560
Construction: Vivid - Cut/Loop	Primary Backing: Woven Polypropylene	
Fiber Content: 100% Solution Dyed Nylon	Secondary Backing: Actionbac®	
Pattern Repeat: 90" x 90"	Total Weight: Apx. 78 oz. sq. yd.	
Tufted Pile Weight: 42 oz. sq. yd.	Yarn Size: 1360 2 ply	
Finished Pile Height: Apx. 0.2813" 0.25" 0.0625"	Standard Width: 15'	



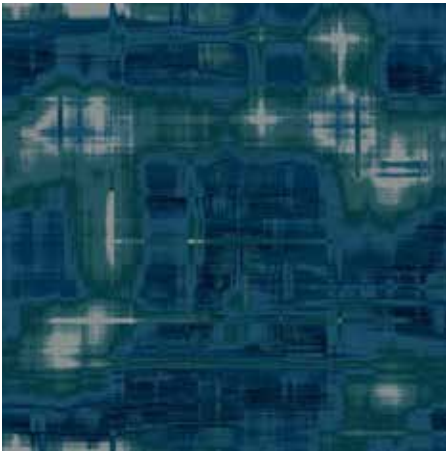
A	5509		
B	5510		
C	4089		
D	X399		
E	1502		
F	3537		
G	4003		
H	8502		

V440 BLUME III		COLOR 460
Construction: Vivid - Cut/Loop	Primary Backing: Woven Polypropylene	
Fiber Content: 100% Solution Dyed Nylon	Secondary Backing: Actionbac®	
Pattern Repeat: 198" x 99"	Total Weight: Apx. 78 oz. sq. yd.	
Tufted Pile Weight: 42 oz. sq. yd.	Yarn Size: 1360 2 ply	
Finished Pile Height: Apx. 0.2813" 0.25" 0.0625"	Standard Width: 15'	



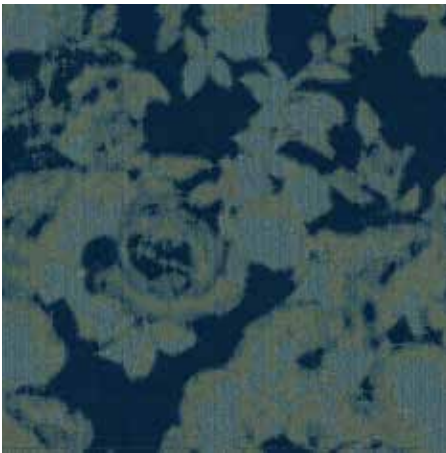
A	2041	I	4003
B	5509	J	8502
C	5510	K	4016
D	4089		
E	4007		
F	X399		
G	1502		
H	3537		

V441 BLUME IV		COLOR 360
Construction: Vivid - Cut/Loop	Primary Backing: Woven Polypropylene	
Fiber Content: 100% Solution Dyed Nylon	Secondary Backing: Actionbac®	
Pattern Repeat: 180" x 144"	Total Weight: Apx. 78 oz. sq. yd.	
Tufted Pile Weight: 42 oz. sq. yd.	Yarn Size: 1360 2 ply	
Finished Pile Height: Apx. 0.2813" 0.25" 0.0625"	Standard Width: 15'	



- A** 5509
- B** 5510
- C** 4089
- D** 8502

V442 BLUME V	COLOR 260
Construction: Vivid - Cut/Loop	Primary Backing: Woven Polypropylene
Fiber Content: 100% Solution Dyed Nylon	Secondary Backing: Actionbac®
Pattern Repeat: 180" x 90"	Total Weight: Apx. 78 oz. sq. yd.
Tufted Pile Weight: 42 oz. sq. yd.	Yarn Size: 1360 2 ply
Finished Pile Height: Apx. 0.2813" 0.25" 0.0625"	Standard Width: 15'



- A** 5510
- B** 4007
- C** 8502

D1589 BLUME VI	COLOR 160
Construction: Dynamics - Scroll Tip Shear	Primary Backing: Woven Polypropylene
Fiber Content: 100% Solution Dyed Nylon	Secondary Backing: Actionbac®
Pattern Repeat: 144" x 96"	Total Weight: Apx. 68 oz. sq. yd.
Tufted Pile Weight: 32 oz. sq. yd.	Yarn Size: 1360 2 ply
Finished Pile Height: Apx. 0.25" 0.1875" 0.0625"	Standard Width: 12'



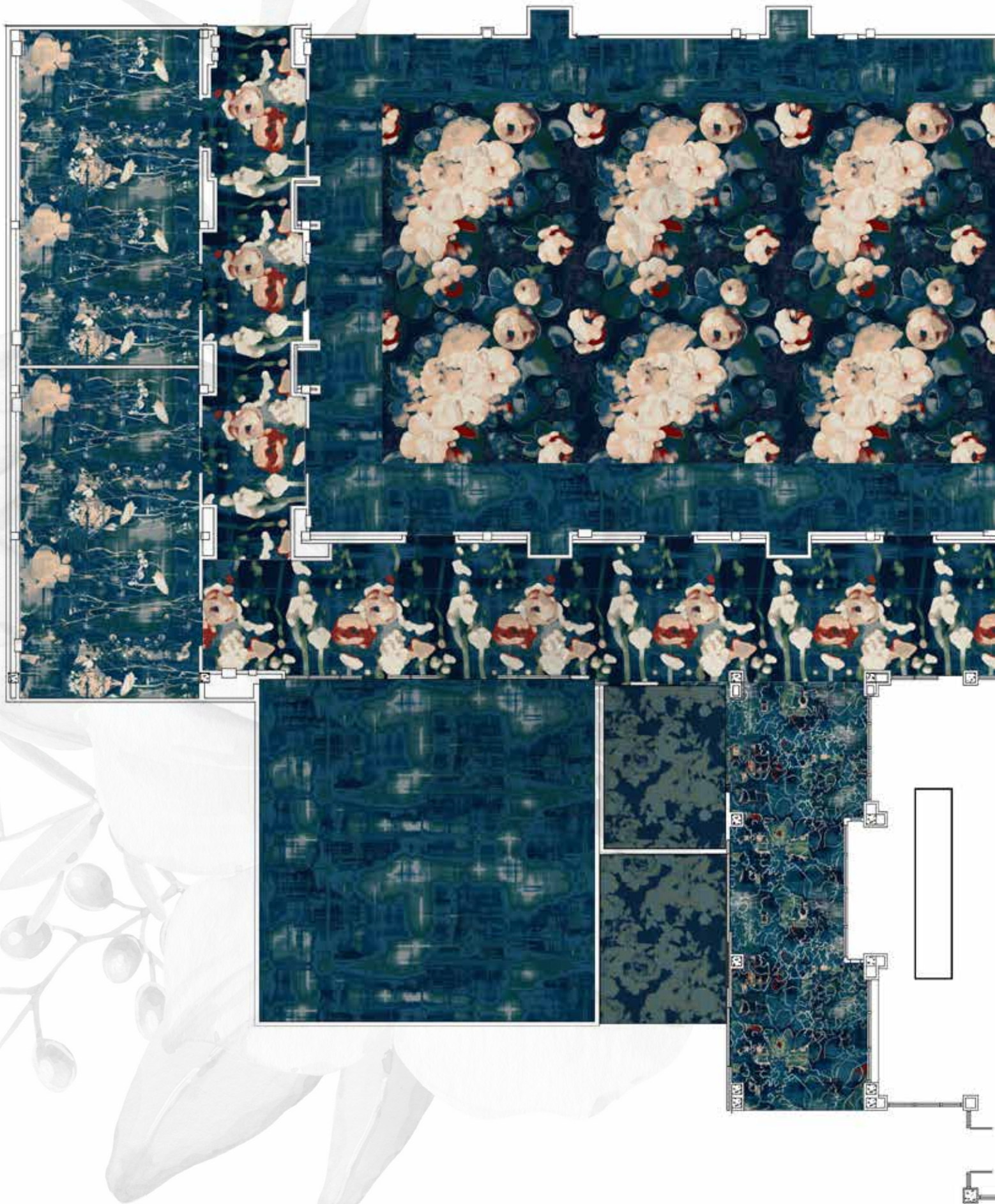
- A** 2041
- B** 5509
- C** 5510
- D** 4089
- E** 4007
- F** 1502
- G** 3537
- H** 8502

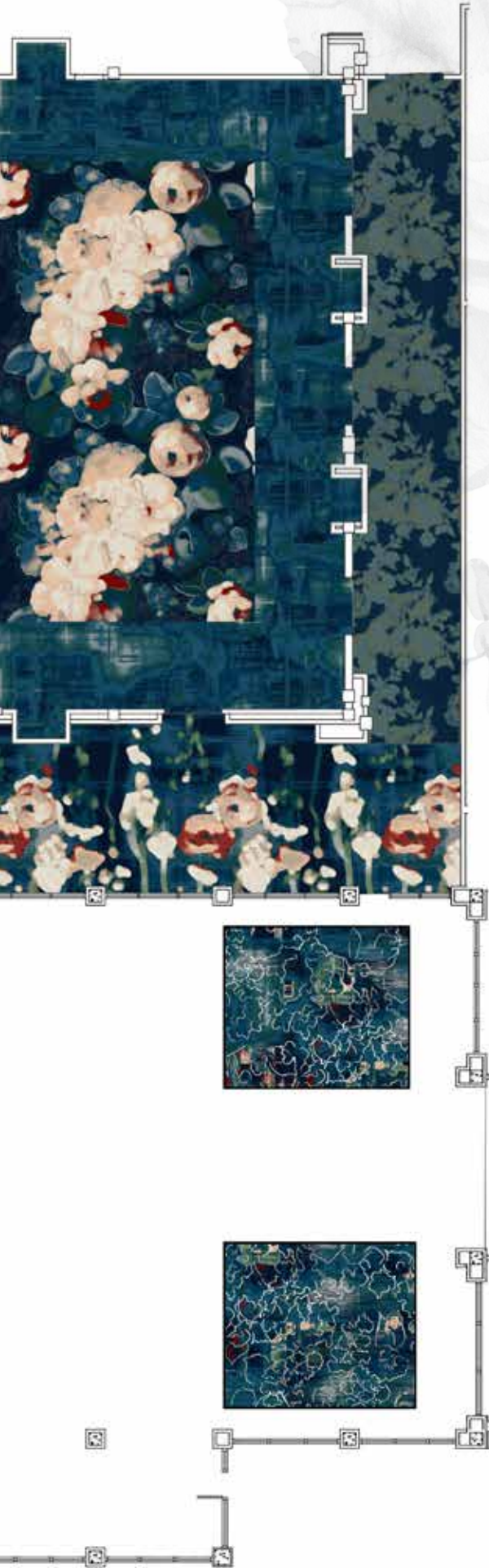
V550 BLUME VII	COLOR 760
Construction: Vivid - Cut/Loop	Primary Backing: Woven Polypropylene
Fiber Content: 100% Solution Dyed Nylon	Secondary Backing: Actionbac®
Pattern Repeat: 180" x 90"	Total Weight: Apx. 78 oz. sq. yd.
Tufted Pile Weight: 42 oz. sq. yd.	Yarn Size: 1360 2 ply
Finished Pile Height: Apx. 0.2813" 0.25" 0.0625"	Standard Width: 15'



- A** 5509
- B** 5510
- C** 4089

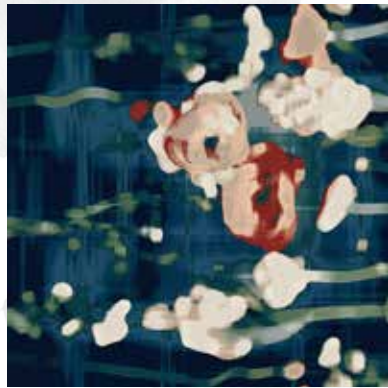
V551 BLUME VIII	COLOR 860
Construction: Vivid - Cut/Loop	Primary Backing: Woven Polypropylene
Fiber Content: 100% Solution Dyed Nylon	Secondary Backing: Actionbac®
Pattern Repeat: 180" x 90"	Total Weight: Apx. 78 oz. sq. yd.
Tufted Pile Weight: 42 oz. sq. yd.	Yarn Size: 1360 2 ply
Finished Pile Height: Apx. 0.2813" 0.25" 0.0625"	Standard Width: 15'





Vintage-inspired florals burst from a deep moody blue background creating the dramatic appeal of Blume.

Blush and crimson are blended with cream to create an ethereal hint of a flower without the stigma of being old fashioned and will add a fresh pop to stark modern spaces.



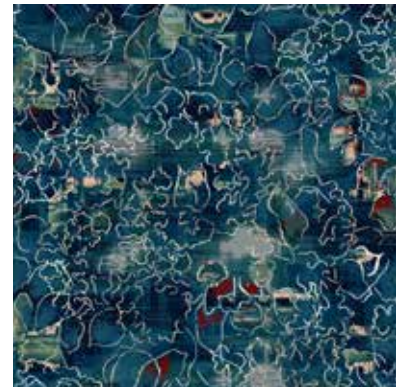
V438



V439



V440



V441



V442



D1589