

El Alma Collection

CUSTOM CARPET

The soul
of our craft.



El Alma

The Soul

What is the soul of a craft?

The people. The people who perform the craftsmanship. The people who learn the craft from artisans before them. And the people who continue to keep a traditional craft alive, using their artistry to bring beauty, meaning, and a sense of connection to present-day experiences.

At the heart and soul of countless forms of craft, past and present, we find individuals who trace their roots to cultures in Mexico and Central American nations. Endlessly diverse peoples from these cultures have always been and continue to be a driving force of craft and industry in the world—including the craft and industry of textiles and floorcoverings, from ancient to contemporary times.

With El Alma, we celebrate the storied, diverse textile traditions and craftspeople of cultures rooted in Mexico and Central America. The art, the individuals, and the living history of their crafts are a continual inspiration for the world of design and an enduring soul of the artistry in textiles and carpet.

CUSTOMIZE EL ALMA

Each pattern in El Alma has a fully customizable palette. The collection as a whole also features a variety of constructions to meet the needs of different spaces within the hospitality environment. To further ensure the right solution for your space, we are able to engineer any of the styles to meet your budget and project requirements.



In ten unique yet interconnected patterns, El Alma draws inspiration from traditional motifs and embroidery visuals developed by cultures in Mexico and Central America, spotlighting the artisans and communities who have long kept these traditional crafts alive.

With vibrant beauty and diversity, El Alma connects today's hospitality spaces to the soul of textile and carpet craftsmanship.

Tarkett Human-Conscious Design™ creates unique guest experiences by providing stylish solutions that contribute to a clean and healthy space.

With more than a century-long heritage of leading innovation, best-in-class custom design, and an unwavering commitment to a circular economy, Tarkett Hospitality helps you create unforgettable guest experiences. Our unmatched custom design capabilities for carpet and LVT help you showcase each property's signature style, while our global footprint makes it easy to carry a consistent brand vision throughout the world.

Tarkett Hospitality's portfolio of flooring solutions for every space includes Axminster woven carpet, tufted broadloom carpet, LVT, rubber tile and wall base, just to name a few. Whether you combine our running-line products and accessories in new and unexpected ways, or customize one of our patterns, you'll find the perfect blend of industrial innovation and artful craftsmanship, lasting performance and beautiful aesthetics.

Learn more at tarketthospitality.com





EL ALMA | EA01-610X
Axminster

A	B	C	D	E	F	G	H	I	J	K	L	M
A764	C765	E768	F658	G658	K769	K768	B983	K986	E880	L982	K877	A559

EL ALMA | EA01-610X



EL ALMA IV EA04-310X
Axminster

A	B	C	D
A764	E768	F658	K769



EL ALMA III EA03-410X
Axminster

A	B	C	D	E	F	G	H	I	J	K	L	M	N
A764	C765	E768	F658	G658	K769	K768	B983	K986	E880	L982	K877	A559	B552



EL ALMA II EA02-510X

EL ALMA II EA02-510X
Axminster

A	B	C	D	E	F	G	H	I	J	K	L	M	N
A764	C765	E768	F658	G658	K769	K768	B983	K986	E880	L982	K877	A559	B552



EL ALMA V EA05-210S

Axminster Sculpt

A	B	C	D	E	F
K877	L877	A559	B552	A553	A559L



EL ALMA XI EA10-110D
Dynamics

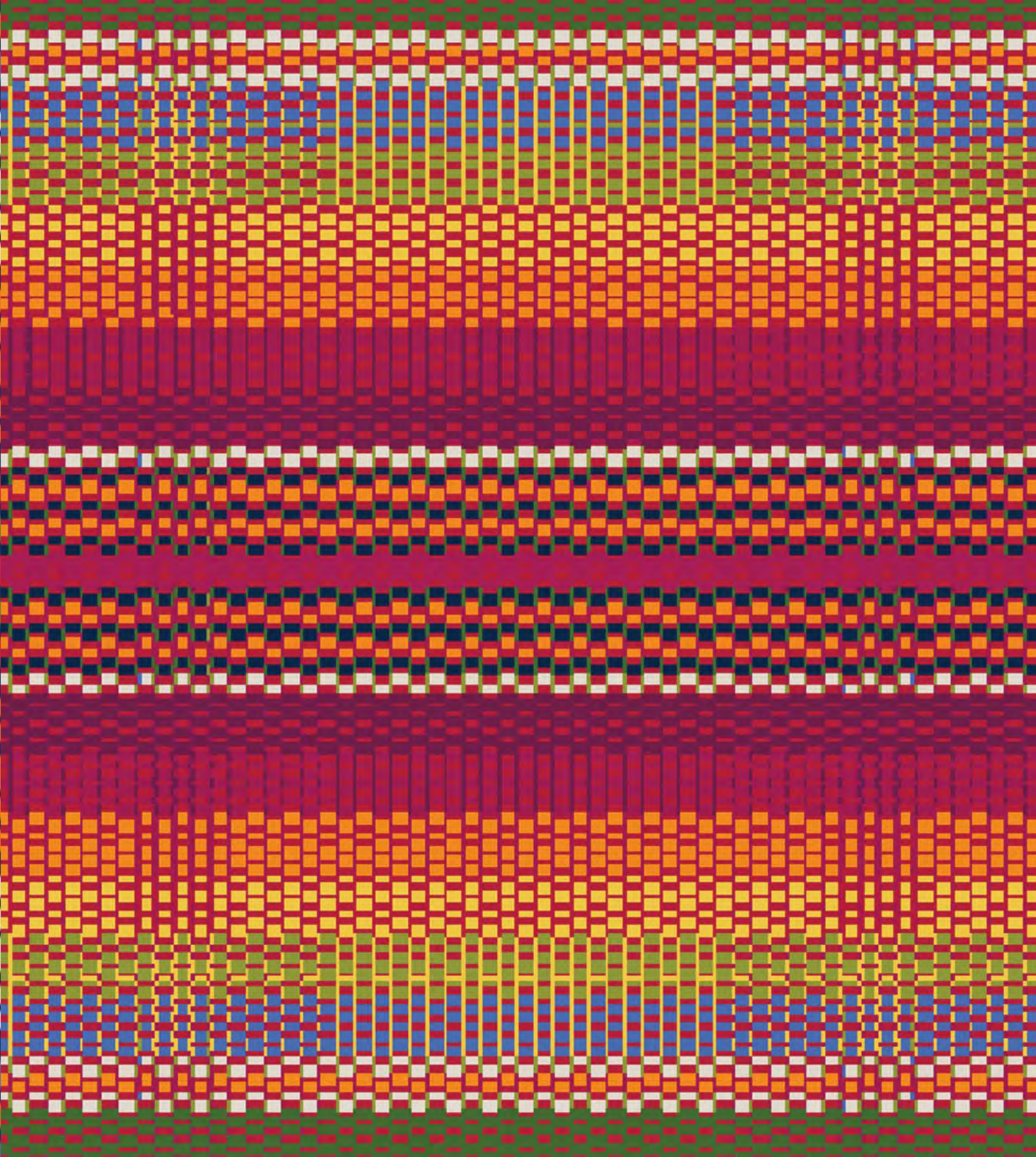
A	B	C	D	E	F	G	H	I	J	K	L	M	N
3543	2513	2512	4526	5522	5057	3541	3542	3513	4516	4524	4503	8002	1508

RUG: EL ALMA XI EA10-110D
LVT: PROGEN STOKES RANGE DUSK



EL ALMA VIII EA08-910V
Vivid

A	B	C	D	F	G	H	K
2512C	2511C	2515C	4524L	5057C	3541C	5521C	X400C



EL ALMA VII EA07-810V
Vivid

A	B	C	D	E	F	G	H	I
2512C	2511C	2515C	4524C	5509C	5521C	2516C	X400C	3542C



EL ALMA VI EA06-710V
Vivid

A	B	C	D	E	F	G	H	I	J	K	L
2512C	2511C	2515C	4524C	4516C	5057C	3541C	5521C	2516C	5051C	X400C	3542C



EL ALMA X EA09-010N
Intrepid

A

B

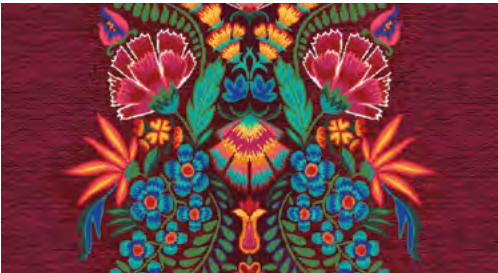
C

X395C

5051C

5524C

El Alma Collection



EL ALMA I EA01-610X

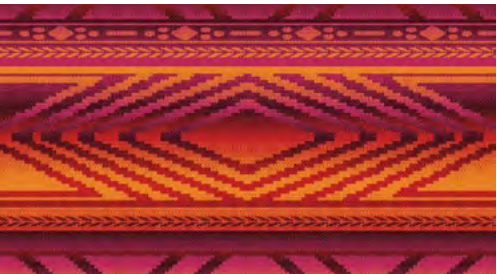


EL ALMA II EA02-510X

Construction:	Woven Axminster	Woven Axminster
Fiber Content:	80% Wool / 20% Nylon	80% Wool / 20% Nylon
Dye Method:	Hank Dyed	Hank Dyed
Tufted Pile Weight:	44 oz. Per Sq. Yard	44 oz. Per Sq. Yard
Finished Pile Height:	.280 in.	.280 in.
Quality:	7/9 9 Row	7/9 9 Row
Primary Backing:	Polypropylene/Polyester	Polypropylene/Polyester
Secondary Backing:	Copolymer	Copolymer
Total Weight:	56 oz.	56 oz.
Standard Width:	13 ft. 2 in.	13 ft. 2 in.
Pattern Repeat:	78.86 in. W x 110.33 in. L	78.86 in. W x 110.33 in. L



EL ALMA III EA03-410X



EL ALMA IV EA04-310X

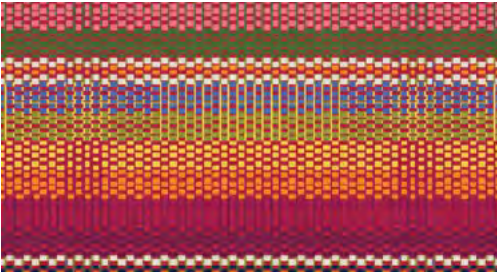

Construction:	Woven Axminster	Woven Axminster
Fiber Content:	80% Wool / 20% Nylon	80% Wool / 20% Nylon
Dye Method:	Hank Dyed	Hank Dyed
Tufted Pile Weight:	44 oz. Per Sq. Yard	44 oz. Per Sq. Yard
Finished Pile Height:	.280 in.	.280 in.
Quality:	7/9 9 Row	7/9 9 Row
Primary Backing:	Polypropylene/Polyester	Polypropylene/Polyester
Secondary Backing:	Copolymer	Copolymer
Total Weight:	56 oz.	56 oz.
Standard Width:	13 ft. 2 in.	13 ft. 2 in.
Pattern Repeat:	78.86 in. W x 78.78 in. L	78.86 in. W x 125.89 in. L



EL ALMA V EA05-210S



EL ALMA VI EA06-710V

Construction:	Woven Axminster Sculpt	Vivid (11 x 11 Cut/Loop CYP)
Fiber Content:	80% Wool / 20% Nylon	100% C.F. Lextron Enviro-Green
Dye Method:	Hank Dyed	Solution Dyed Nylon
Tufted Pile Weight:	44 oz. Per Sq. Yard	42 oz. Per Sq. Yard
Finished Pile Height:	.280 in.	.281” Cut / .250” High Loop / .062” Low Loop
Quality:	7/9 9 Row	11 Stitches Per Inch
Primary Backing:	Polypropylene/Polyester	Woven Polypropylene
Secondary Backing:	Copolymer	Unitary Action Bac
Total Weight:	56 oz.	78 oz.
Standard Width:	13 ft. 2 in.	15 ft.
Pattern Repeat:	31.05 in. W x 12.25 in. L	90 in. W x 120 in. L
<hr/>		
<div><div></div><div>EL ALMA VII EA07-810V</div></div>		
<div><div></div><div>EL ALMA VIII EA08-910V</div></div>		

Construction:	Vivid (11 x 11 Cut/Loop CYP)	Vivid (11 x 11 Cut/Loop CYP)
Fiber Content:	100% C.F. Lextron Enviro-Green	100% C.F. Lextron Enviro-Green
Dye Method:	Solution Dyed Nylon	Solution Dyed Nylon
Tufted Pile Weight:	42 oz. Per Sq. Yard	42 oz. Per Sq. Yard
Finished Pile Height:	.281” Cut / .250” High Loop / .062” Low Loop	.281” Cut / .250” High Loop / .062” Low Loop
Quality:	11 Stitches Per Inch	11 Stitches Per Inch
Primary Backing:	Woven Polypropylene	Woven Polypropylene
Secondary Backing:	Unitary Action Bac	Unitary Action Bac
Total Weight:	78 oz.	78 oz.
Standard Width:	15 ft.	15 ft.
Pattern Repeat:	90 in. W x 192 in. L	30 in. W x 30 in. L



EL ALMA X EA09-010N



EL ALMA XI EA10-110D

Construction:	Intrepid Multi-Level Loop Tip Shear	Dynamics – Servo-Scroll Loop Tip Shear
Fiber Content:	100% C.F. Lextron Enviro-Green	100% C.F. Lextron Enviro-Green
Dye Method:	Solution Dyed Nylon	Solution Dyed Nylon
Tufted Pile Weight:	42 oz. Per Sq. Yard	32 oz. Per Sq. Yard
Finished Pile Height:	.250” High / .187” Med. / .062” Low	.250” High / .187” Med. / .062” Low
Quality:	28 Stitches Per Inch	10 Stitches Per Inch
Primary Backing:	Woven Polypropylene	Woven Polypropylene
Secondary Backing:	Unitary Action Bac	Action Bac
Total Weight:	78 oz.	68 oz.
Standard Width:	15 ft.	12 ft.
Pattern Repeat:	90 in. W x 42.14 in. L	36 in. W x 2 in. L



Tarkett Hospitality

285 Kraft Drive
Dalton, GA 30721
800.871.3211

www.tarketthospitality.com

EA06B

© 2020 Tarkett Hospitality 11/20