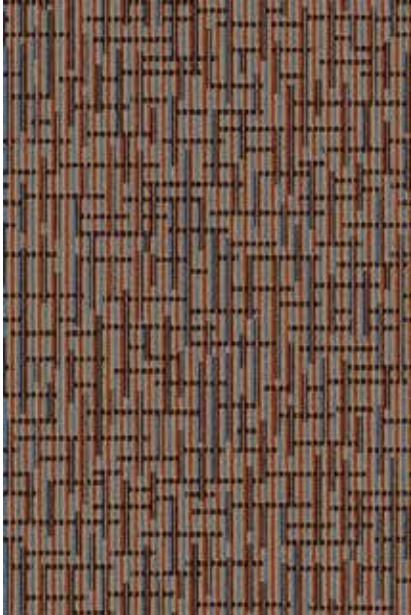


# CHOICE HOTELS

Sleep Inn



# CHOICE HOTELS

Sleep Inn Overview

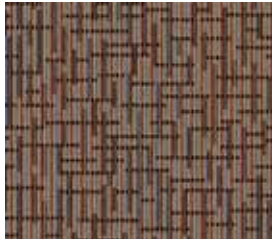


Manufacturer: Tarkett  
Address: 285 Kraft Drive  
Dalton, GA 30721  
Phone: 706.277.3000  
Contact: Jackie Passaro  
Jackie.Passaro@tarkett.com  
Contact: Amber Osiecki  
Amber.Osiecki@tarkett.com  
Web: www.tarketthospitality.com

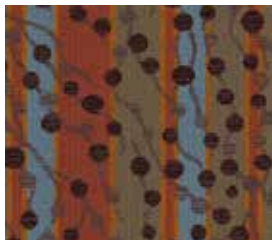
## Choose Tarkett

- + Approved Styles
- + Lowest Pricing
- + Fast Delivery
- + 10-Year Warranty
- + Broadloom Carpet
- + Lextron Solution-Dyed Nylon

## VIBRANT COLLECTION



- Product Type: Guest Room, Meeting Room, Stairwell, Back of House, Employee Lounge
- Style Number: S0432
- Color Number: 194
- Specs: 32 oz. - 12' W
- Pattern Repeat: 36" x 48"



- Product Type: Corridor/Lobby Inset
- Style Number: S0836
- Color Number: 346
- Specs: 36 oz. - 12' W
- Pattern Repeat: 12" x 12"



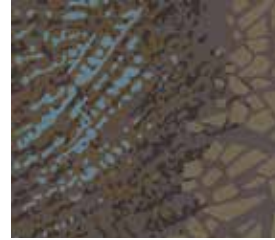
- Product Type: Cove Base
- Style Number: 728S
- Color Number: 7510
- Specs: 4" or 6"

For Use with S0432/194 & S0836/346

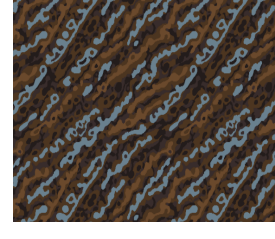
## UPSCALE COLLECTION



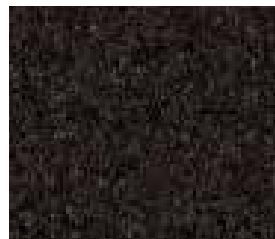
- Product Type: Guest Room, Meeting Room, Stairwell, Back of House, Employee Lounge
- Style Number: S0332
- Color Number: 196
- Specs: 32 oz. - 12' W
- Pattern Repeat: 12" x 18"



- Product Type: Corridor
- Style Number: S0936
- Color Number: 397
- Specs: 42 oz. - 12' W
- Pattern Repeat: 72" x 80"



- Product Type: Lobby
- Style Number: S0436
- Color Number: 397
- Specs: 42 oz. - 12' W
- Pattern Repeat: 36" x 36.5"



- Product Type: Cove Base
- Style Number: 728S
- Color Number: 7511
- Specs: 4" or 6"

For Use with S0332/196, S0436/397 & S0936/397



### COORDINATES



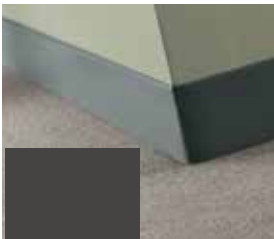
63 Burnt Umber

- Product Type: GUEST ROOM
- Duracove Traditional Rubber Wall Base
- Style Number: DCT-63
- Color Name: 63 Burnt Umber
- Specs: 4" or 6" Height
- Available in toe or toeless



34 Almond

- Product Type: PUBLIC SPACE – Lobby/Vestibule/Community Room/Vending/Elevator Lobby/Breakfast Area/Food Prep/Market Place/Back of House Laundry/Breakroom
- Duracove Traditional Rubber Wall Base
- Style Number: DC-34
- Specs: 4" x 1/8" x 120' Coil
- Color Name: 34 Almond



44 Dark Brown

- Product Type: PUBLIC SPACE – Back of House/Back Stairwell/Employee Lounge
- Duracove Traditional Rubber Wall Base
- Style Number: DC-44
- Specs: 4" x 1/8" x 120' Coil
- Color Name: 44 Dark Brown



TG3 Iron Mountain

- Product Type: FITNESS AREA
- Duracove Traditional Rubber Wall Base
- Style Number: DC-TG3
- Specs: 4" x 1/8" x 120' Coil
- Color Name: TG3 Iron Mountain

### SUBTLE COLLECTION



- Product Type: Guest Room, Stairwell, Back of House, Employee Lounge
- Style Number: S0232
- Color Number: 296
- Specs: 32 oz. - 12' W
- Pattern Repeat: 0.4" x 12"



- Product Type: Cove Base
- Style Number: 728S
- Color Number: 7513
- Specs: 4" or 6"

For Use with S0232/296



- Product Type: Corridor, Meeting Room, Lobby Inset
- Style Number: S0736
- Color Number: 496
- Specs: 36 oz. - 12' W
- Pattern Repeat: 36" x 36"



- Product Type: Cove Base
- Style Number: 728S
- Color Number: 8525
- Specs: 4" or 6"

For Use with S0736/496



- Product Type: Lobby, Vestibule, Community Room and Vending, Elevator Lobby, Breakfast Area, Market Place
- Style Number: PLWD Suntoned Teak
- Color Number: 7523
- Size: 6" x 48"

# VIBRANT COLLECTION

Guest Room, Meeting Room, Stairwell,  
Back of House, Employee Lounge



Manufacturer: Tarkett  
Address: 285 Kraft Drive  
Dalton, GA 30721  
Phone: 706.277.3000  
Contact: Jackie Passaro  
Jackie.Passaro@tarkett.com  
Contact: Amber Osiecki  
Amber.Osiecki@tarkett.com  
Web: www.tarketthospitality.com

Style Name: S0432 Sleep Inn Vibrant Scheme  
Guest Room, Meeting Room, Stairwell, Back of  
House, Employee Lounge

Color: 194  
Machine Type: Dynamics  
Pattern Repeat: 24" x 36"  
Radiant Panel: Class 1  
Smoke Density: Less Than 450  
Warranty: 10-Year Wear Guarantee  
Recycled Content: Lextron Essentials has 10% pre-consumer  
recycled content.

Environmental  
Information: CRI Green Label Plus™ Certified  
Construction: D Dynamics-Servo Loop Scroll Tip Shear  
Gauge: 1/10th  
Tufted Pile Weight: 32 oz. Guest Room  
Finished Pile Weight: 68 oz. Guest Room  
Finished Pile Height: High .25, Med .1875, Low .0625



## Additional Information

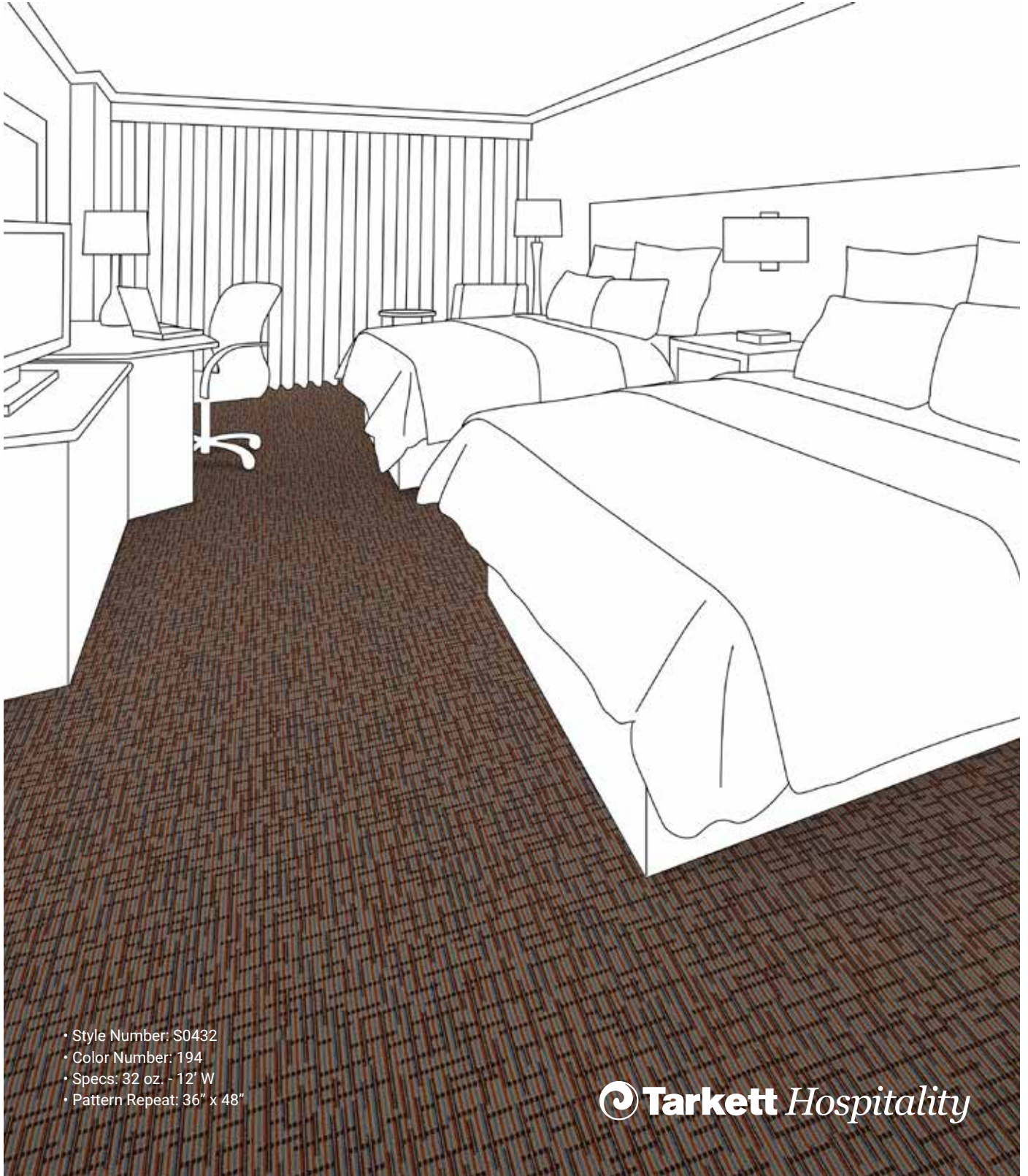
Carpet should be installed in accordance with the Carpet and Rug Institute's standard CRI-104. Carpet must be over manufacturer's recommended pad.

- Pattern streaks and banding are visually apparent streaking in patterned carpet resulting from linear juxtaposition of pattern elements visible in both length and width direction. IT IS NOT A CARPET DEFECT, but is inherent in solution dyed graphic and cut/loop patterns.

- All Specifications subject to normal manufacturing tolerance.

# VIBRANT COLLECTION

Guest Room, Meeting Room, Stairwell,  
Back of House, Employee Lounge



- Style Number: S0432
- Color Number: 194
- Specs: 32 oz. - 12' W
- Pattern Repeat: 36" x 48"

 **Tarkett** Hospitality

# VIBRANT COLLECTION

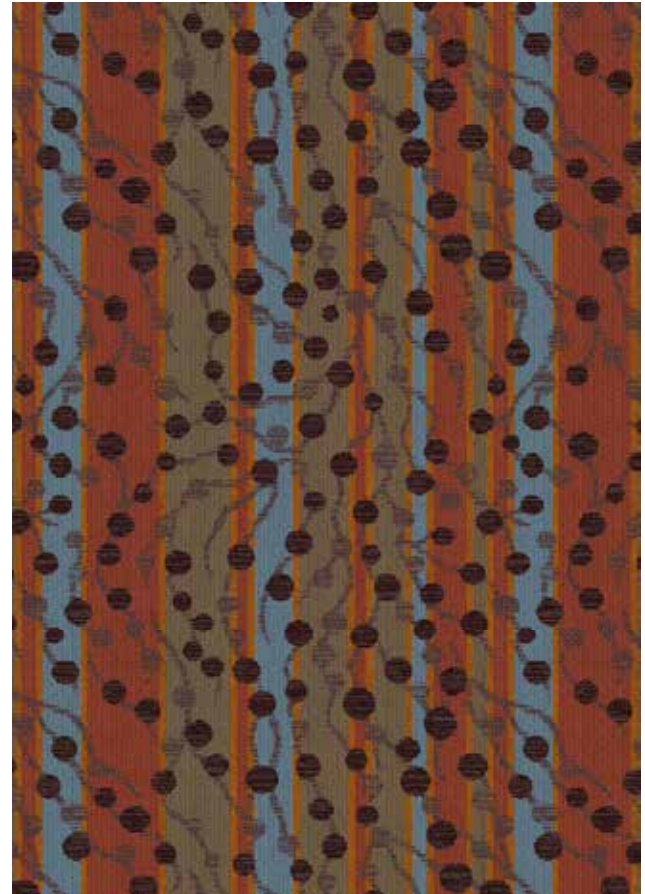
Corridor/Lobby Inset



Manufacturer: Tarkett  
Address: 285 Kraft Drive  
Dalton, GA 30721  
Phone: 706.277.3000  
Contact: Jackie Passaro  
Jackie.Passaro@tarkett.com  
Contact: Amber Osiecki  
Amber.Osiecki@tarkett.com  
Web: www.tarketthospitality.com

Style Name: S0836 Sleep Inn Vibrant Corridor/Lobby Inset  
Color: 346  
Machine Type: Dynamics  
Pattern Repeat: 36" x 48"  
Radiant Panel: Class 1  
Smoke Density: Less Than 450  
Warranty: 10-Year Wear Guarantee  
Recycled Content: Lextron Essentials has 10% pre-consumer recycled content.

Environmental Information: CRI Green Label Plus™ Certified  
Construction: D Dynamics-Servo Loop Scroll Tip Shear  
Gauge: 1/10th  
Tufted Pile Weight: 36 oz. Public Space  
Finished Pile Weight: 72 oz. Public Space  
Finished Pile Height: High .25, Med .1875, Low .0625



## Additional Information

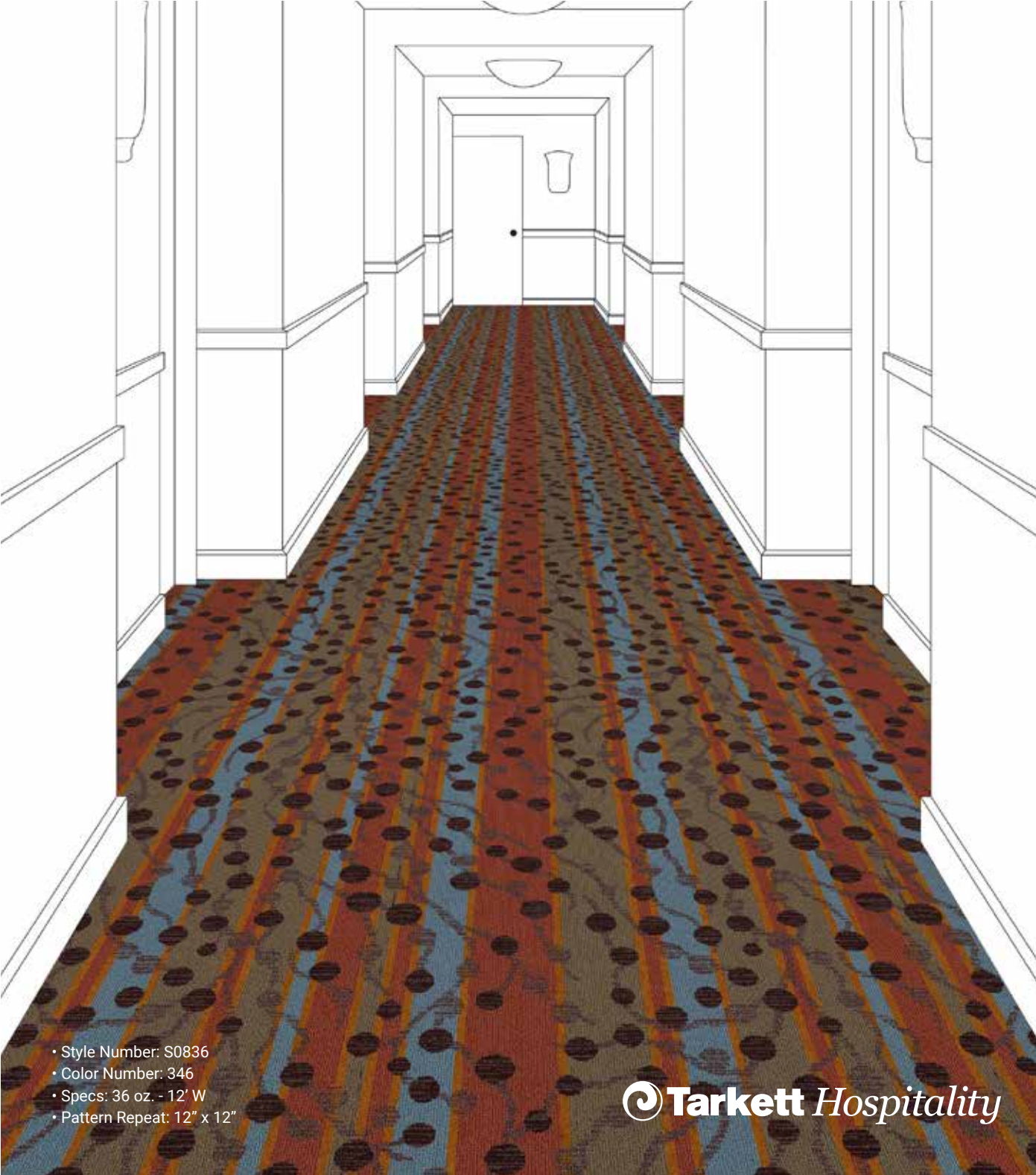
Carpet should be installed in accordance with the Carpet and Rug Institute's standard CRI-104. Carpet must be over manufacturer's recommended pad.

- Pattern streaks and banding are visually apparent streaking in patterned carpet resulting from linear juxtaposition of pattern elements visible in both length and width direction. IT IS NOT A CARPET DEFECT, but is inherent in solution dyed graphic and cut/loop patterns.

- All Specifications subject to normal manufacturing tolerance.

# VIBRANT COLLECTION

Corridor/Lobby Inset



- Style Number: S0836
- Color Number: 346
- Specs: 36 oz. - 12' W
- Pattern Repeat: 12" x 12"



# UPSCALE COLLECTION

Guest Room, Meeting Room, Stairwell,  
Back of House, Employee Lounge



Manufacturer: Tarkett  
Address: 285 Kraft Drive  
Dalton, GA 30721  
Phone: 706.277.3000  
Contact: Jackie Passaro  
Jackie.Passaro@tarkett.com  
Contact: Abmer Osiecki  
Amber.Osiecki@tarkett.com  
Web: www.tarketthospitality.com

Style Name: S0332 Sleep Inn Upscale  
Guest Room, Meeting Room, Stairwell,  
Back of House, Employee Lounge

Color: 196  
Machine Type: Dynamics  
Pattern Repeat: 12" x 18"  
Radiant Panel: Class 1  
Smoke Density: Less Than 450  
Warranty: 10-Year Wear Guarantee  
Recycled Content: Lextron Essentials has 10% pre-consumer recycled content.

Environmental Information: CRI Green Label Plus™ Certified  
Construction: D Dynamics-Servo Loop Scroll Tip Shear  
Gauge: 1/10th  
Tufted Pile Weight: 32 oz. Guest Room  
Finished Pile Weight: 68 oz. Guest Room  
Finished Pile Height: High .25, Med .1875, Low .0625



## Additional Information

Carpet should be installed in accordance with the Carpet and Rug Institute's standard CRI-104. Carpet must be over manufacturer's recommended pad.

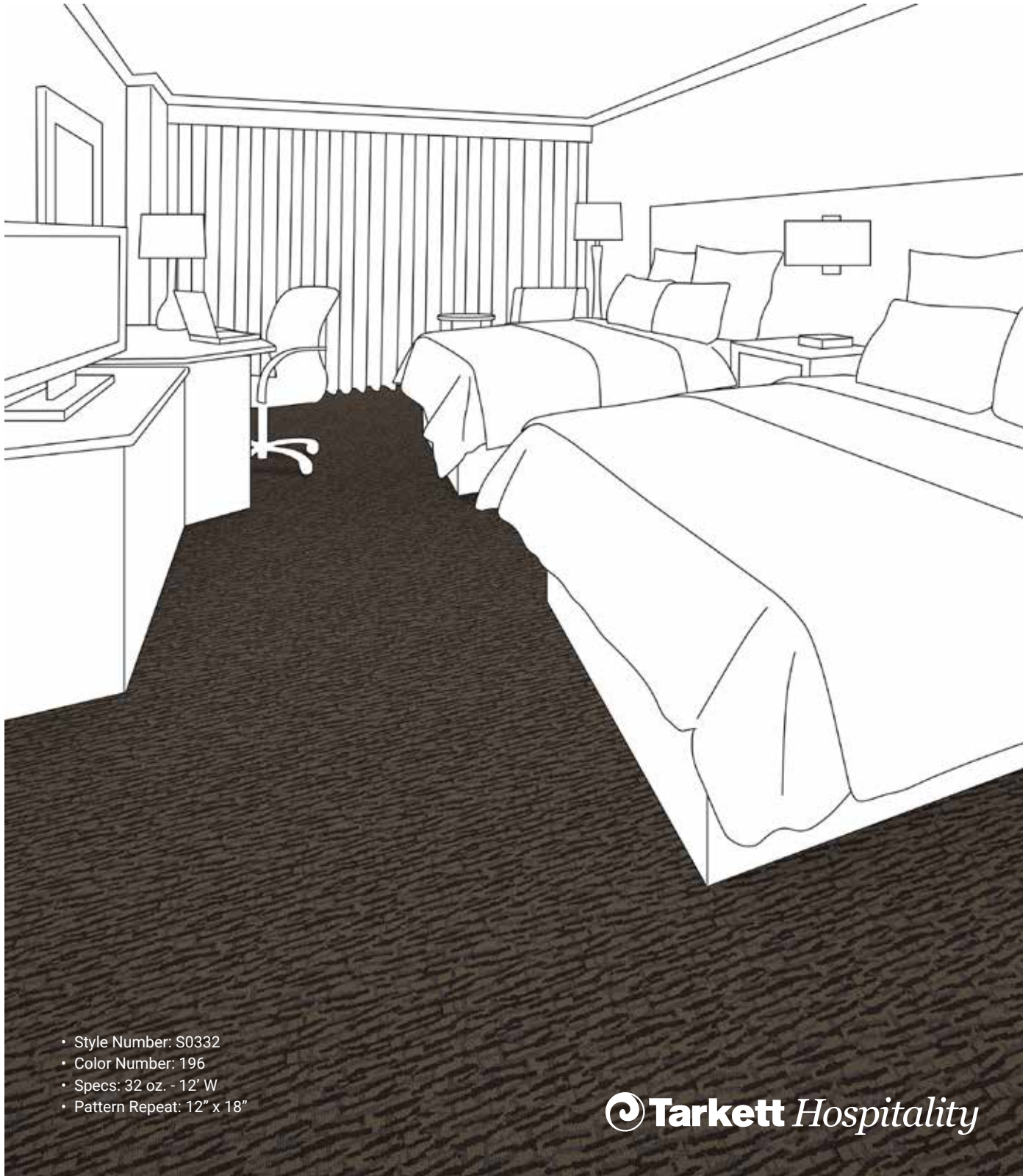
- Pattern streaks and banding are visually apparent streaking in patterned carpet resulting from linear juxtaposition of pattern elements visible in both length and width direction. IT IS NOT A CARPET DEFECT, but is inherent in solution dyed graphic and cut/loop patterns.

- All Specifications subject to normal manufacturing tolerance.



# UPSCALE COLLECTION

Guest Room, Meeting Room, Stairwell,  
Back of House, Employee Lounge



- Style Number: S0332
- Color Number: 196
- Specs: 32 oz. - 12' W
- Pattern Repeat: 12" x 18"

**Tarkett** Hospitality

# UPSCALE COLLECTION

Corridor



Manufacturer: Tarkett  
Address: 285 Kraft Drive  
Dalton, GA 30721  
Phone: 706.277.3000  
Contact: Jackie Passaro  
Jackie.Passaro@tarkett.com  
Contact: Amber Osiecki  
Amber.Osiecki@tarkett.com  
Web: www.tarketthospitality.com

Style Name: S0936 Sleep Inn Upscale Corridor  
Color: 397  
Machine Type: Intrepid  
Pattern Repeat: 72" x 80"  
Radiant Panel: Class 1  
Smoke Density: Less Than 450  
Warranty: 10-Year Wear Guarantee  
Recycled Content: Lextron Essentials has 10% pre-consumer recycled content.  
Static Control: Below 3.5 KV  
Environmental Information: CRI Green Label Plus™ Certified  
Construction: IN Intrepid-Multi Color Servo Loop Tip Shear  
Gauge: 1/10th  
Tufted Pile Weight: 42 oz.  
Finished Pile Weight: 78 oz.  
Finished Pile Height: High .25, Med .1875, Low .0625



## Additional Information

Carpet should be installed in accordance with the Carpet and Rug Institute's standard CRI-104. Carpet must be over manufacturer's recommended pad.

- Pattern streaks and banding are visually apparent streaking in patterned carpet resulting from linear juxtaposition of pattern elements visible in both length and width direction. IT IS NOT A CARPET DEFECT, but is inherent in solution dyed graphic and cut/loop patterns.

- All Specifications subject to normal manufacturing tolerance.

# UPSCALE COLLECTION

Corridor



- Style Number: S0936
- Color Number: 397
- Specs: 36 oz. - 12' W
- Pattern Repeat: 72" x 80"

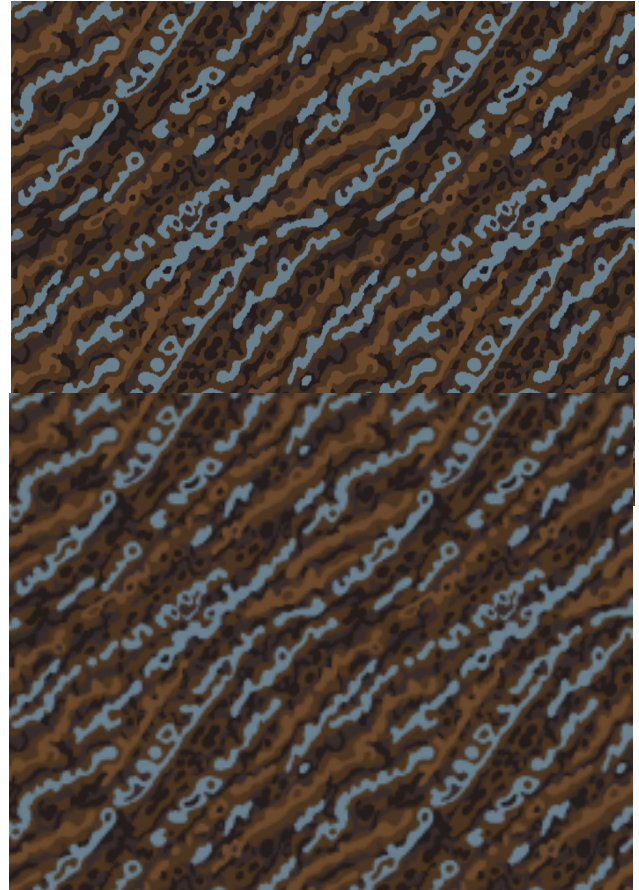
 **Tarkett** Hospitality

# UPSCALE COLLECTION

Lobby



Manufacturer: Tarkett  
Address: 285 Kraft Drive  
Dalton, GA 30721  
Phone: 706.277.3000  
Contact: Jackie Passaro  
Jackie.Passaro@tarkett.com  
Contact: Amber Osiecki  
Web: Amber.Osiecki@tarkett.com  
www.tarketthospitality.com  
Style Name: S0436 Sleep Inn Upscale Lobby  
Color: 397  
Machine Type: Intrepid  
Machine Type: 26" x 36.5"  
Pattern Repeat: Class 1  
Radiant Panel: Less Than 450  
Smoke Density: 10-Year Wear Guarantee  
Warranty: Lextron Essentials has 10% pre-consumer recycled content.  
Recycled Content: Below 3.5 KV  
Static Control: CRI Green Label Plus™ Certified  
Environmental Information: E Element-Enhanced Loop Tip Shear  
Construction: 1/10th  
Gauge: 42 oz. Lobby  
Tufted Pile Weight: 68 oz.  
Finished Pile Weight: High .25, Med .1875, Low .0625  
Finished Pile Height:



## Additional Information

Carpet should be installed in accordance with the Carpet and Rug Institute's standard CRI-104. Carpet must be over manufacturer's recommended pad.

- Pattern streaks and banding are visually apparent streaking in patterned carpet resulting from linear juxtaposition of pattern elements visible in both length and width direction. IT IS NOT A CARPET DEFECT, but is inherent in solution dyed graphic and cut/loop patterns.

- All Specifications subject to normal manufacturing tolerance.

# SUBTLE COLLECTION

Guest Room, Stairwell,  
Back of House, Employee Lounge



Manufacturer: Tarkett  
Address: 285 Kraft Drive  
Dalton, GA 30721  
Phone: 706.277.3000  
Contact: Jackie Passaro  
Jackie.Passaro@tarkett.com  
Contact: Amber Osiecki  
Web: Amber.Osiecki@tarkett.com  
www.tarketthospitality.com  
Style Name: S0232 Sleep Inn Subtle  
Guest Room, Stairwell, Back of House,  
Employee Lounge  
Color:  
Machine Type: 296  
Pattern Repeat: Element  
Radiant Panel: 2" x 1"  
Smoke Density: Class 1  
Warranty: Less Than 450  
Recycled Content: 10-Year Wear Guarantee  
Lextron Essentials has 10% pre-  
consumer recycled content.  
Static Control: Below 3.5 KV  
Environmental Information:  
Construction: CRI Green Label Plus™ Certified  
Gauge: E Element-Enhanced Loop Tip Shear  
Tufted Pile Weight: 1/10th  
Finished Pile Weight: 32 oz. Guest Rooms  
Finished Pile Height: 68 oz.  
High .25, Med .1875, Low .0625



## Additional Information

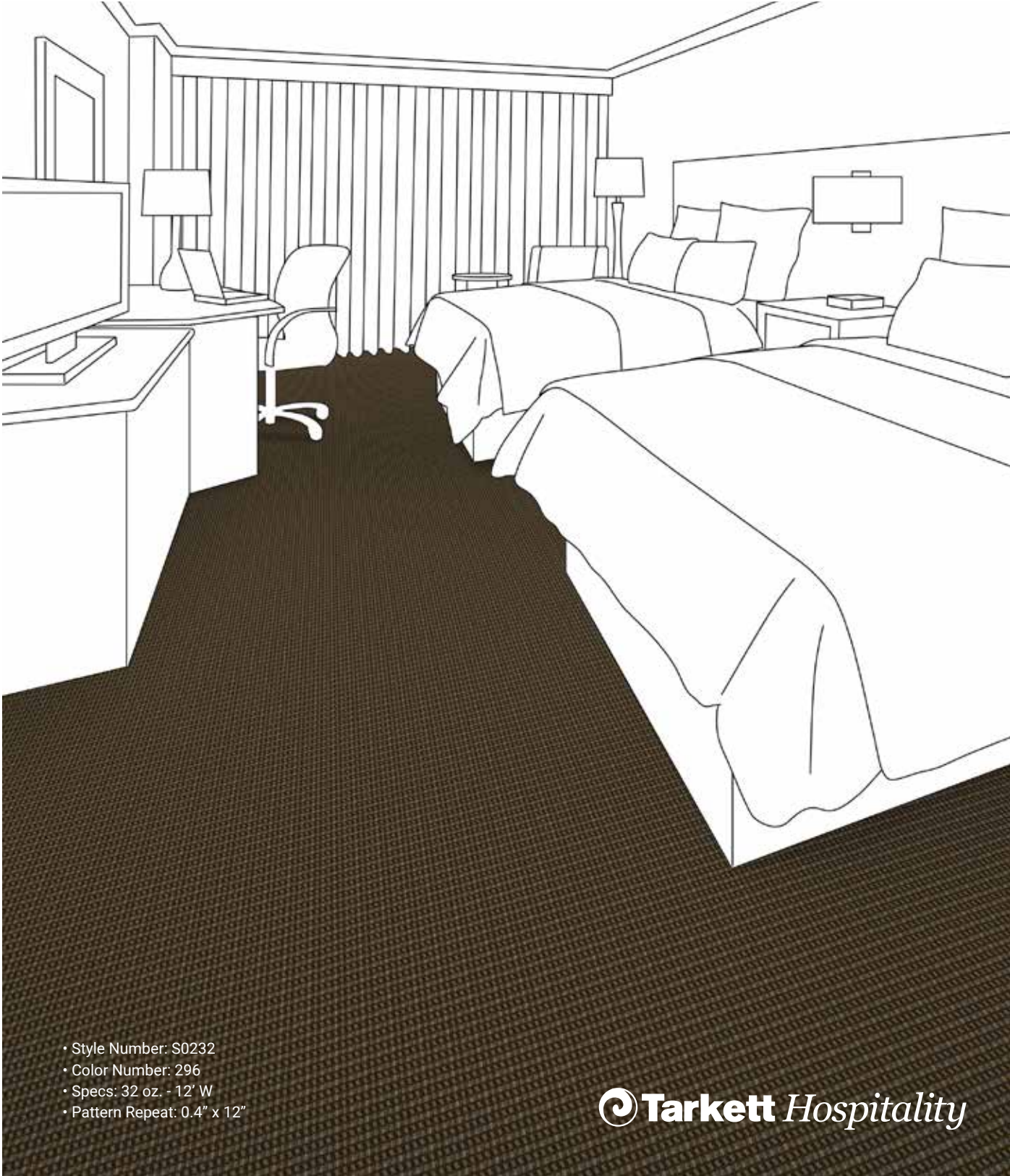
Carpet should be installed in accordance with the Carpet and Rug Institute's standard CRI-104. Carpet must be over manufacturer's recommended pad.

• Pattern streaks and banding are visually apparent streaking in patterned carpet resulting from linear juxtaposition of pattern elements visible in both length and width direction. IT IS NOT A CARPET DEFECT, but is inherent in solution dyed graphic and cut/loop patterns.

• All Specifications subject to normal manufacturing tolerance.

# SUBTLE COLLECTION

Guest Room, Stairwell,  
Back of House, Employee Lounge



- Style Number: S0232
- Color Number: 296
- Specs: 32 oz. - 12' W
- Pattern Repeat: 0.4" x 12"

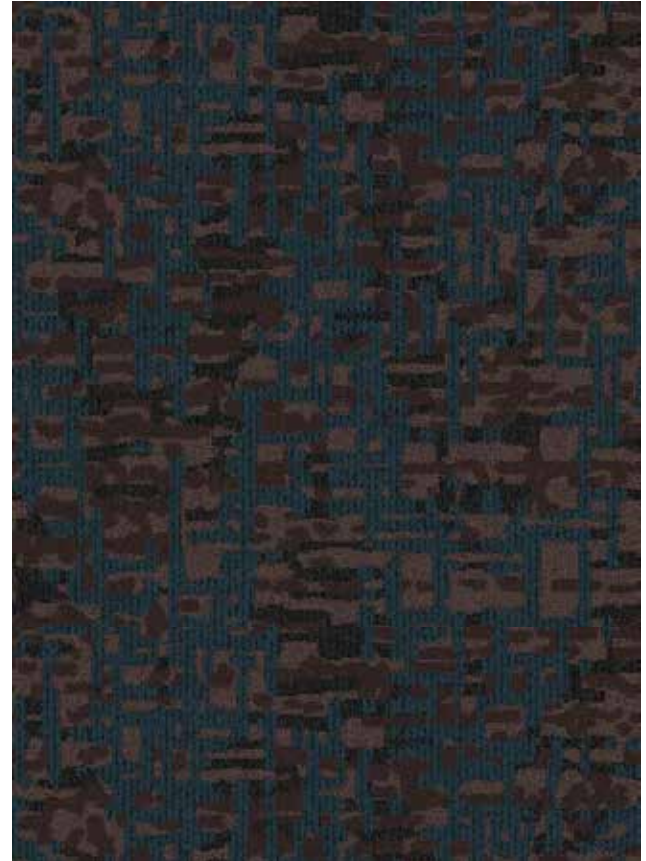


# SUBTLE COLLECTION

Corridor, Meeting Room, Lobby Inset



Manufacturer:	Tarkett
Address:	285 Kraft Drive Dalton, GA 30721
Phone:	706.277.3000
Contact:	Jackie Passaro Jackie.Passaro@tarkett.com
Contact:	Amber Osiecki Amber.Osiecki@tarkett.com
Web:	www.tarketthospitality.com
Style Name:	S0736 Sleep Inn Subtle Corridor
Color:	496
Machine Type:	Element
Pattern Repeat:	36" x 36"
Radiant Panel:	Class 1
Smoke Density:	Less Than 450
Warranty:	10-Year Wear Guarantee
Recycled Content:	Lextron Essentials has 10% pre-consumer recycled content.
Static Control:	Below 3.5 KV
Environmental Information:	CRI Green Label Plus™ Certified
Construction:	E Element-Enhanced Loop Tip Shear
Gauge:	1/10th
Tufted Pile Weight:	36 oz. Guest Rooms
Finished Pile Weight:	68 oz.
Finished Pile Height:	High .25, Med .1875, Low .0625



## Additional Information

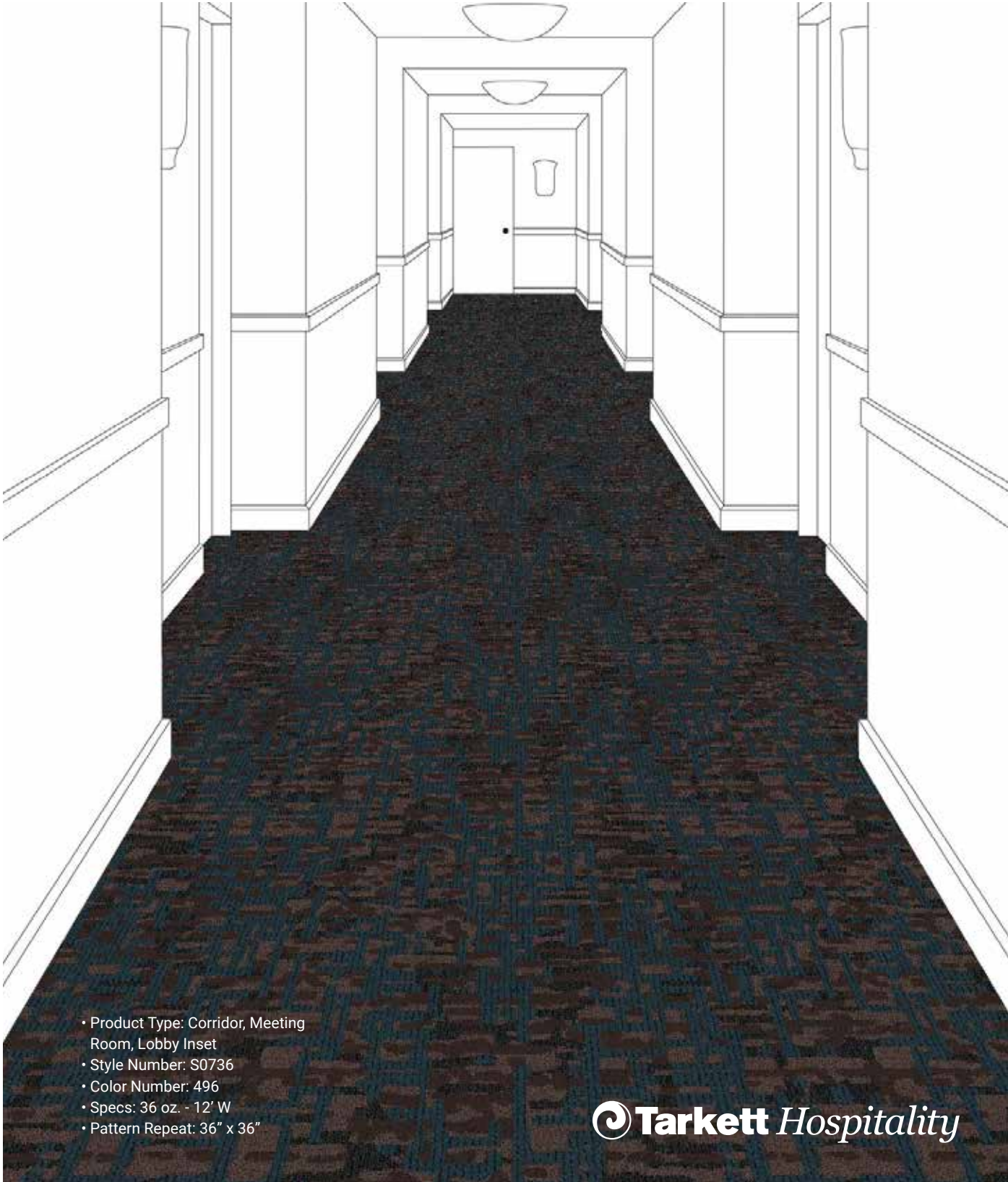
Carpet should be installed in accordance with the Carpet and Rug Institute's standard CRI-104. Carpet must be over manufacturer's recommended pad.

- Pattern streaks and banding are visually apparent streaking in patterned carpet resulting from linear juxtaposition of pattern elements visible in both length and width direction. IT IS NOT A CARPET DEFECT, but is inherent in solution dyed graphic and cut/loop patterns.

- All Specifications subject to normal manufacturing tolerance.

# SUBTLE COLLECTION

Corridor, Meeting Room, Lobby Inset



- Product Type: Corridor, Meeting Room, Lobby Inset
- Style Number: S0736
- Color Number: 496
- Specs: 36 oz. - 12' W
- Pattern Repeat: 36" x 36"





Manufacturer: Tarkett  
 Address: 285 Kraft Drive  
 Dalton, GA 30721  
 Phone: 706.277.3000  
 Contact: Jackie Passaro  
 Jackie.Passaro@tarkett.com  
 Contact: Amber Osiecki  
 Amber.Osiecki@tarkett.com  
 Web: www.tarketthospitality.com

	<b>Standard</b>	<b>Tarkett Value</b>
Classification	ASTM F1700	Class III, Type B (Solid Vinyl Floor)
Surface treatment		Techtonic
Total thickness	ASTM F386	0.120 " (3.05mm)
Wear layer thickness	ASTM F410	20 mil (0.51mm)
Installation method		Glue-Down
Pattern		iDLatitude
Pattern type		Modern Wood
Format Type		Plank
Flexibility	ASTM F137	Pass
Chemical Resistance	ASTM F925	Passes
Static Load Limit	ASTM F970	250 psi, $\leq 0.005"$
Heat stability	ASTM F1514	$\Delta E \leq 8.0$
Light Stability	ASTM F1515	$\Delta E \leq 8.0$
Slip resistance	ASTM D2047	SCOF $\geq 0.5$
Squareness	ASTM F2055	Pass
Flammability	ASTM E648	Class 1 ( $\geq 0.45 \text{ W/cm}^2$ ) $< 450$
Residual indentation	ASTM E662	Pass
Commercial warranty	ASTM F1914	20-year limited



**iD Latitude Wood PLWD**  
7523 Suntoned Teak