

CHOICE HOTELS

Quality Inn



 **Tarkett** Hospitality

EARTH SCHEME

Quality Inn Overview



Manufacturer: Tarkett
Address: 285 Kraft Drive
Dalton, GA 30721
Phone: 706.277.3000
Contact: Jackie Passaro
Jackie.Passaro@tarkett.com
Contact: Amber Osiecki
Amber.Osiecki@tarkett.com
Web: www.tarketthospitality.com

Choose Tarkett

- + Approved Styles
- + Lowest Pricing
- + Fast Delivery
- + 10-Year Warranty
- + Broadloom Carpet
- + Lextron Solution-Dyed Nylon



- + Product Type: Corridor/Lobby
- + Style Number: Q0936
- + Color Number: 388
- + Specs: 36 oz. – 12' W
- + Pattern Repeat: 18" x 18"



- + Product Type: Guest Room
- + Style Number: Q0932
- + Color Number: 288
- + Specs: 32 oz. – 12' W
- + Pattern Repeat: 6" x 24"



- + Product Type: LVT
- + Style Number: iD Latitude PLWD
- + Color: 3401 Black Walnut
- + Specs: 6" x 48"



- + Product Type: Cove Base
- + Style Number: 728S
- + Color Number: 7021
- + Specs: 4"

EARTH SCHEME

Quality Inn Guest Room



Manufacturer: Tarkett
Address: 285 Kraft Drive
Dalton, GA 30721
Phone: 706.277.3000
Contact: Jackie Passaro
Jackie.Passaro@tarkett.com
Contact: Amber Osiecki
Amber.Osiecki@tarkett.com
Web: www.tarketthospitality.com

Style Name: Q0932 Quality Inn Guest Room
Color: 288
Machine Type: Element
Pattern Repeat: 6" x 24"
Radiant Panel: Class 1
Smoke Density: Less Than 450
Warranty: 10-Year Wear Guarantee
Recycled Content: Lextron Essentials has 10% pre-consumer recycled content.

Static Control: Below 3.5 KV
Environmental Information: CRI Green Label Plus™ Certified
Construction
Element: E Element-Enhanced Loop Tip Shear
Gauge: 1/10th
Tufted Pile Weight: 32 oz.
Finished Pile Weight: 68 oz.
Finished Pile Height: High .25, Med .1875, Low .0625



Additional Information

Carpet should be installed in accordance with the Carpet and Rug Institute's standard CRI-104. Carpet must be over manufacturer's recommended pad.

- Pattern streaks and banding are visually apparent streaking in patterned carpet resulting from linear juxtaposition of pattern elements visible in both length and width direction. IT IS NOT A CARPET DEFECT, but is inherent in solution dyed graphic and cut/loop patterns.

- All Specifications subject to normal manufacturing tolerance.

EARTH SCHEME

Quality Inn Guest Room



- + Style Number: Q0932
- + Color Number: 288
- + Specs: 32 oz. – 12' Width
- + Pattern Repeat: 6" x 24"

EARTH SCHEME

Quality Inn Corridor/Lobby



Manufacturer: Tarkett
Address: 285 Kraft Drive
Dalton, GA 30721
Phone: 706.277.3000
Contact: Jackie Passaro
Jackie.Passaro@tarkett.com
Contact: Amber Osiecki
Amber.Osiecki@tarkett.com
Web: www.tarketthospitality.com

Style Name: Q0936 Quality Inn Corridor/Lobby
Color: 388
Machine Type: Element
Pattern Repeat: 18" x 18"
Radiant Panel: Class 1
Smoke Density: Less Than 450
Warranty: 10-Year Wear Guarantee
Recycled Content: Lextron Essentials has 10% pre-consumer recycled content.
Static Control: Below 3.5 KV
Environmental Information: CRI Green Label Plus™ Certified
Construction element: E Element-Enhanced Loop Tip Shear
Gauge: 1/10th
Tufted Pile Weight: 32 oz
Finished Pile Weight: 68 oz
Finished Pile Height: High .25 , Med .1875, Low .0625



Additional Information

Carpet should be installed in accordance with the Carpet and Rug Institute's standard CRI-104. Carpet must be over manufacturer's recommended pad.

- Pattern streaks and banding are visually apparent streaking in patterned carpet resulting from linear juxtaposition of pattern elements visible in both length and width direction. IT IS NOT A CARPET DEFECT, but is inherent in solution dyed graphic and cut/loop patterns.

- All Specifications subject to normal manufacturing tolerance.

EARTH SCHEME

Quality Inn Corridor



- + Style Number: Q0936
- + Color Number: 388
- + Specs: 36 oz. - 12' Width
- + Pattern Repeat: 18" x 18"

Tarkett Hospitality

MARINE SCHEME

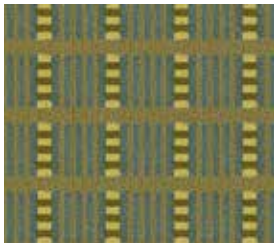
Quality Inn Overview



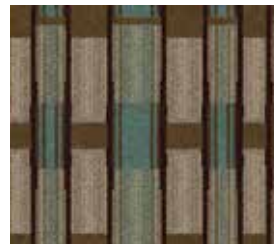
Manufacturer: Tarkett
Address: 285 Kraft Drive
Dalton, GA 30721
Phone: 706.277.3000
Contact: Jackie Passaro
Jackie.Passaro@tarkett.com
Contact: Amber Osiecki
Amber.Osiecki@tarkett.com
Web: www.tarketthospitality.com

Choose Tarkett

- + Approved Styles
- + Lowest Pricing
- + Fast Delivery
- + 10-Year Warranty
- + Broadloom Carpet
- + Lextron Solution-Dyed Nylon



+ Product Type: Guest Room
+ Style Number: Q1832
+ Color Number: 352
+ Specs: 32 oz. – 12' W
+ Pattern Repeat: 3.6" x 3.6"



+ Product Type: Corridor/Lobby
+ Style Number: Q0836
+ Color Number: 396
+ Specs: 36 oz. – 12' W
+ Pattern Repeat: 18" x 18"



+ Product Type: LVT
+ Style Number: iD Latitude PLWD
+ Color: 3401 Black Walnut
+ Specs: 6" x 48"



+ Product Type: Cove Base
+ Style Number: 728S
+ Color Number: 7509
+ Specs: 4"

MARINE SCHEME

Quality Inn Guest Room



Manufacturer: Tarkett
Address: 285 Kraft Drive
Dalton, GA 30721
Phone: 706.277.3000
Contact: Jackie Passaro
Jackie.Passaro@tarkett.com
Contact: Amber Osiecki
Amber.Osiecki@tarkett.com
Web: www.tarketthospitality.com

Style Name: Q1832 Quality Inn Guest Room
Color: 352
Machine Type: Element
Pattern Repeat: 4" x 4"
Radiant Panel: Class 1
Smoke Density: Less Than 450
Warranty: 10-Year Wear Guarantee
Recycled Content: Lextron Essentials has 10% pre-consumer recycled content.
Static Control: Below 3.5 KV
Environmental Information: CRI Green Label Plus™ Certified
Construction element: E Element-Enhanced Loop Tip Shear
Gauge: 1/10th
Tufted Pile Weight: 32 oz.
Finished Pile Weight: 68 oz.
Finished Pile Height: High .25, Med .1875, Low .0625



Additional Information

Carpet should be installed in accordance with the Carpet and Rug Institute's standard CRI-104. Carpet must be over manufacturer's recommended pad.

- Pattern streaks and banding are visually apparent streaking in patterned carpet resulting from linear juxtaposition of pattern elements visible in both length and width direction. IT IS NOT A CARPET DEFECT, but is inherent in solution dyed graphic and cut/loop patterns.

- All Specifications subject to normal manufacturing tolerance.

MARINE SCHEME

Quality Inn Guest Room



- + Style Number: Q1832
- + Color Number: 352
- + Specs: 32 oz. – 12' W
- + Pattern Repeat: 3.6" x 3.6"

MARINE SCHEME

Quality Inn Corridor/Lobby



Manufacturer: Tarkett
Address: 285 Kraft Drive
Dalton, GA 30721
Phone: 706.277.3000
Contact: Jackie Passaro
Jackie.Passaro@tarkett.com
Contact: Amber Osiecki
Amber.Osiecki@tarkett.com
Web: www.tarketthospitality.com

Style Name: Q0836 Quality Inn Corridor/Lobby
Color: 396
Machine Type: Element
Pattern Repeat: 18" x 18"
Radiant Panel: Class 1
Smoke Density: Less Than 450
Warranty: 10-Year Wear Guarantee
Recycled Content: Lextron Essentials has 10% pre-consumer recycled content.
Static Control: Below 3.5 KV
Environmental Information: CRI Green Label Plus™ Certified
Construction Element: E Element-Enhanced Loop Tip Shear
Gauge: 1/10th
Tufted Pile Weight: 36 oz.
Finished Pile Weight: 68 oz.
Finished Pile Height: High .25, Med .1875, Low .0625

Additional Information

Carpet should be installed in accordance with the Carpet and Rug Institute's standard CRI-104. Carpet must be over manufacturer's recommended pad.

- Pattern streaks and banding are visually apparent streaking in patterned carpet resulting from linear juxtaposition of pattern elements visible in both length and width direction. IT IS NOT A CARPET DEFECT, but is inherent in solution dyed graphic and cut/loop patterns.

- All Specifications subject to normal manufacturing tolerance.



MARINE SCHEME

Quality Inn Corridor/Lobby



- + Style Number: Q0836
- + Color Number: 396
- + Specs: 36 oz. – 12' W
- + Pattern Repeat: 18" x 18"



CHOICE HOTELS

Quality Inn LVT



Manufacturer: Tarkett
Address: 285 Kraft Drive
Dalton, GA 30721
Phone: 706.277.3000
Contact: Jackie Passaro
Jackie.Passaro@tarkett.com
Contact: Amber Osiecki
Amber.Osiecki@tarkett.com
Web: www.tarketthospitality.com

	Standard	Tarkett Value
Classification	ASTM F1700	Class III, Type B (Solid Vinyl Floor)
Surface treatment		Techtonic
Total thickness	ASTM F386	0.120 " (3.05mm)
Wear layer thickness	ASTM F410	20 mil (0.51mm)
Installation method		Glue-Down
Pattern		iDLatitude
Pattern type		Modern Wood
Format Type		Plank
Flexibility	ASTM F137	Pass
Chemical Resistance	ASTM F925	Passes
Static Load Limit	ASTM F970	250 psi, $\leq 0.005"$
Heat stability	ASTM F1514	$\Delta E \leq 8.0$
Light Stability	ASTM F1515	$\Delta E \leq 8.0$
Slip resistance	ASTM D2047	SCOF ≥ 0.5
Squareness	ASTM F2055	Pass
Flammability	ASTM E648	Class 1 ($\geq 0.45 \text{ W/cm}^2$) < 450
Residual indentation	ASTM E662	Pass
Commercial warranty	ASTM F1914	20-year limited



iD Latitude Wood PLWD
3401 Black Walnut