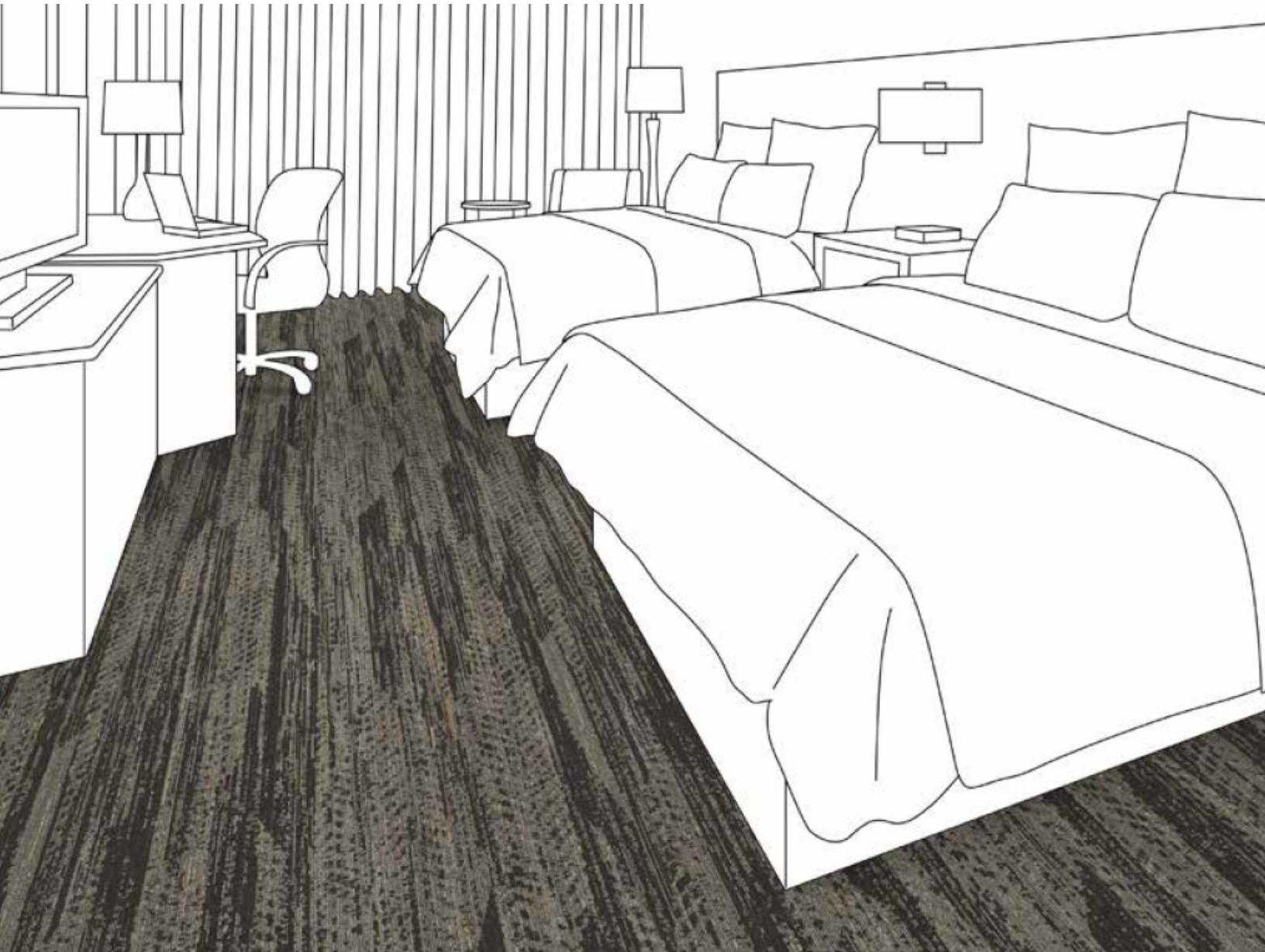


# CHOICE HOTELS

Clarion Pointe



# CHOICE HOTELS

Clarion Pointe, Compass Scheme



Manufacturer: Tarkett  
Address: 285 Kraft Drive  
Dalton, GA 30721  
Phone: 706.277.3000  
Contact: Jackie Passaro  
Jackie.Passaro@tarkett.com  
Contact: Amber Osiecki  
Amber.Osiecki@tarkett.com  
Web: www.tarketthospitality.com

## Choose Tarkett

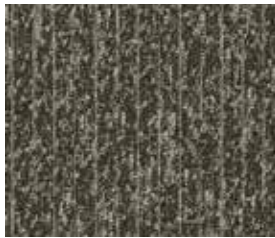
- + Approved Styles
- + Lowest Pricing
- + Fast Delivery
- + 10-Year Warranty
- + Broadloom Carpet
- + Lextron Solution-Dyed Nylon



- + Project Type: Corridor/Public Space
- + Pattern: A0010 (Double Boucle)
- + Colorway: Cozy Taupe (74208)
- + Installation: Horizontal or Vertical Ashlar
- + Tile Size: 9" x 36"
- + Specs: 15 oz.



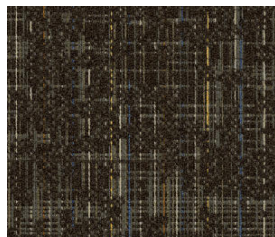
- Product Type: Guest Room
- Style Number: CP132
- Color Number: 220
- Specs: 32 oz. - 12' W
- Pattern Repeat: 48" x 84"



- + Project Type: Corridor/Public Space
- + Pattern: A0010 (Double Boucle)
- + Colorway: Warm Sable (74209)
- + Installation: Horizontal or Vertical Ashlar
- + Tile Size: 9" x 36"
- + Specs: 15 oz.



- Product Type: Corridor
- Style Number: CP136
- Color Number: 120
- Specs: 36 oz. - 12' W
- Pattern Repeat: 12 x 20"



- + Project Type: Guestroom
- + Pattern: 11130 ColorMap
- + Colorway: Mountain Soil 42806
- + Installation: Vertical Ashlar
- + Tile Size: 24" x 24"
- + Specs: 20 oz.



- Product Type: Cove Base
- Style Number: 728S
- Color Number: 193 (8517)
- Specs: 4"
- Cove Base works for both Schemes

# CHOICE HOTELS

Clarion Pointe, Compass Scheme



Manufacturer: Tarkett  
Address: 285 Kraft Drive  
Dalton, GA 30721 706.277.3000  
Phone: Amber Osiecki  
Contact: Amber.Osiecki@tarkett.com  
Web: www.tarketthospitality.com

Project Type: Corridor/Public Space Carpet Tile  
Style Name: A0010 Double Boucle  
Color: 74208 Cozy Taupe  
Pattern Repeat: 36" x 36"  
Radiant Panel: Class 1  
Smoke Density: Less Than 450  
Warranty: Lifetime Limited  
Static Control: Below 3.0 KV

Environmental Information: CRI Green Label Plus™ Certified Stratatec®  
Construction: Patterned Symtex® 1/13th  
Gauge: 24 oz.  
Tufted Pile Weight: High .25, Med .187, Low .0625  
Finished Pile Height:



## Additional Information

Carpet should be installed in accordance with the Carpet and Rug Institute's standard CRI-104. Carpet must be over manufacturer's recommended pad.

- Pattern streaks and banding are visually apparent streaking in patterned carpet resulting from linear juxtaposition of pattern elements visible in both length and width direction. IT IS NOT A CARPET DEFECT, but is inherent in solution dyed graphic and cut/loop patterns.

- All Specifications subject to normal manufacturing tolerance.

# CHOICE HOTELS

Clarion Pointe, Corridor



- + Clarion Pointe Corridor
- + Pattern: A0010 (Double Boucle)
- + Colorway: Cozy Taupe (74208)
- + Tile Size: 9" x 36"

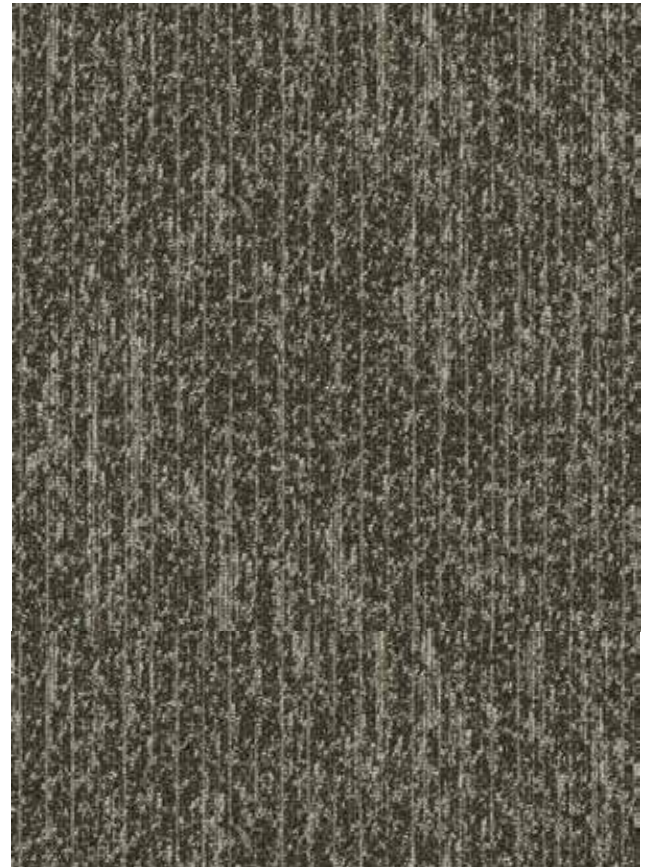
 **Tarkett** Hospitality

# CHOICE HOTELS

Clarion Pointe, Compass Scheme



Manufacturer: Tarkett  
Address: 285 Kraft Drive  
Dalton, GA 30721 706.277.3000  
Phone: Jackie Passaro  
Contact: Jackie.Passaro@tarkett.com  
Amber Osiecki  
Contact: Amber.Osiecki@tarkett.com  
www.tarketthospitality.com  
Web:  
Corridor/Public Space Carpet Tile  
Project Type: A0010 Double Boucle  
Style Name: 74209 Warm Sable  
Color: 36" x 36"  
Pattern Repeat: Class 1  
Radiant Panel: Less Than 450  
Smoke Density: Lifetime Limited  
Warranty: Below 3.0 KV  
Static Control:  
Environmental Information: CRI Green Label Plus™ Certified  
Stratatec® Patterned Symtex®  
Construction: 1/13th  
Gauge: 24 oz.  
Tufted Pile Weight: High .25, Med .187, Low .0625  
Finished Pile Height:



## Additional Information

Carpet should be installed in accordance with the Carpet and Rug Institute's standard CRI-104. Carpet must be over manufacturer's recommended pad.

- Pattern streaks and banding are visually apparent streaking in patterned carpet resulting from linear juxtaposition of pattern elements visible in both length and width direction. IT IS NOT A CARPET DEFECT, but is inherent in solution dyed graphic and cut/loop patterns.

- All Specifications subject to normal manufacturing tolerance.

# CHOICE HOTELS

Clarion Pointe, Corridor



- + Corridor/Public Space
- + Pattern: A0010 (Double Boucle)
- + Colorway: Warm Sable (74209)
- + Tile Size: 9" x 36"

 **Tarkett** Hospitality

# CHOICE HOTELS

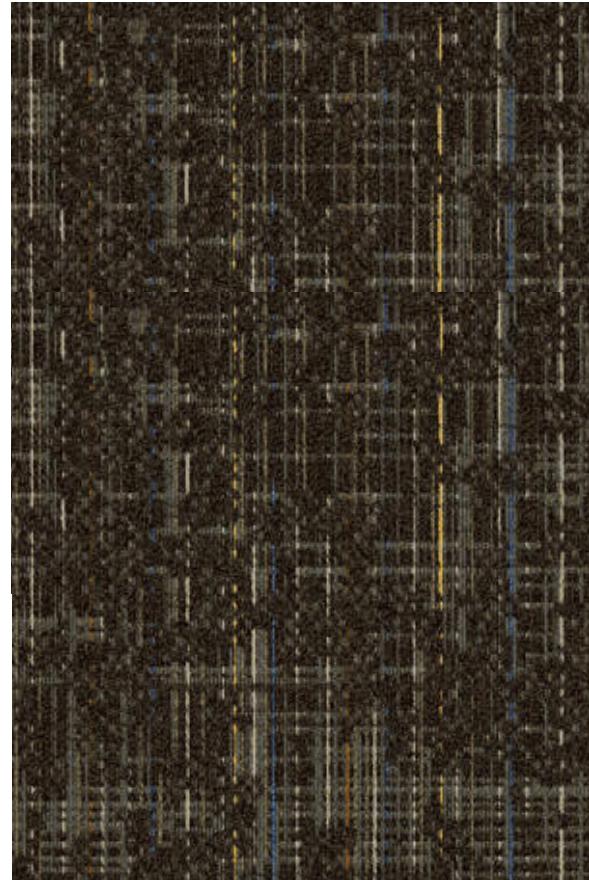
Clarion Pointe, Guest Rooms



Manufacturer: Tarkett  
Address: 285 Kraft Drive  
Dalton, GA 30721  
Phone: 706.277.3000  
Contact: Jackie Passaro  
Jackie.Passaro@tarkett.com  
Contact: Amber Osiecki  
Amber.Osiecki@tarkett.com  
Web: www.tarketthospitality.com

Project Type: Guestroom Carpet Tile  
Style Name: 11130 ColorMap  
Color: 42806 Mountain Soil  
Pattern Repeat: 24" x 24"  
Radiant Panel: Class 1  
Smoke Density: Less Than 450  
Warranty: Lifetime Limited  
Static Control: Below 3.0 KV  
Secondary Backing: ethos® Modular with Omniccoat Technology™

Environmental Information: CRI Green Label Plus™ Certified  
Construction: Stratatec® Patterned Symtex®  
Gauge: 1/13th  
Tufted Pile Weight: 24 oz.  
Finished Pile Height: High .25, Med .187, Low .0625



Enviro-Green yarn has 10% pre-consumer recycled content.  
Recommended for Moderate (Rooms) carpet traffic levels.  
NOTE: Due to the manufacturing process of a tip shear product, the finished yarn weight will vary more than normal manufacturing tolerances and side match cannot be guaranteed.

Carpet should be installed in accordance with the Carpet and Rug Institute's standard CRI-104. Carpet must be over manufacturer's recommended pad. Pattern streaks and banding are visually apparent streaking in patterned carpet resulting from linear juxtaposition of pattern elements visible in both length and width direction. IT IS NOT A CARPET DEFECT, but is inherent in solution dyed graphic and cut/loop patterns. All Specifications subject to normal manufacturing tolerance.

# CHOICE HOTELS

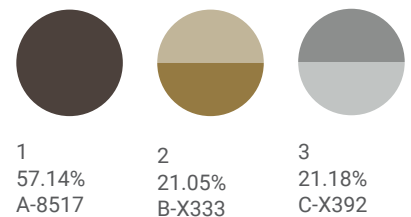
Clarion Pointe, Guest Rooms



Manufacturer: Tarkett  
Address: 285 Kraft Drive  
Dalton, GA 30721  
Phone: 706.277.3000  
Contact: Jackie Passaro  
Jackie.Passaro@tarkett.com  
Contact: Amber Osiecki  
Amber.Osiecki@tarkett.com  
Web: www.tarketthospitality.com

## GUEST ROOM

Style: CP132  
Color: 220  
Construction: Dynamics – Servo-Scroll Loop Tip Shear  
Fiber: 100% C.F. Lextron Enviro-Green Nylon  
Gauge: 1/10  
Tufted Pile Weight: 32 oz. Per Sq. Yard  
Pile Height: .250" High - .062" Low  
Stitches Per Inch: 10  
Primary Backing: Woven Polypropylene  
Secondary Backing: Action Bac  
Dye: Solution Dyed  
Total Weight: 68 oz.  
Width: 12 ft.  
Radiant Panel: Class 1  
Smoke Density: Less than 450  
Pattern Repeat: 48"W x 84"L  
Warranty: 10-Year Wear Guarantee  
Traffic Class: Moderate (Rooms)



Enviro-Green yarn has 10% pre-consumer recycled content.

Recommended for Moderate (Rooms) carpet traffic levels.

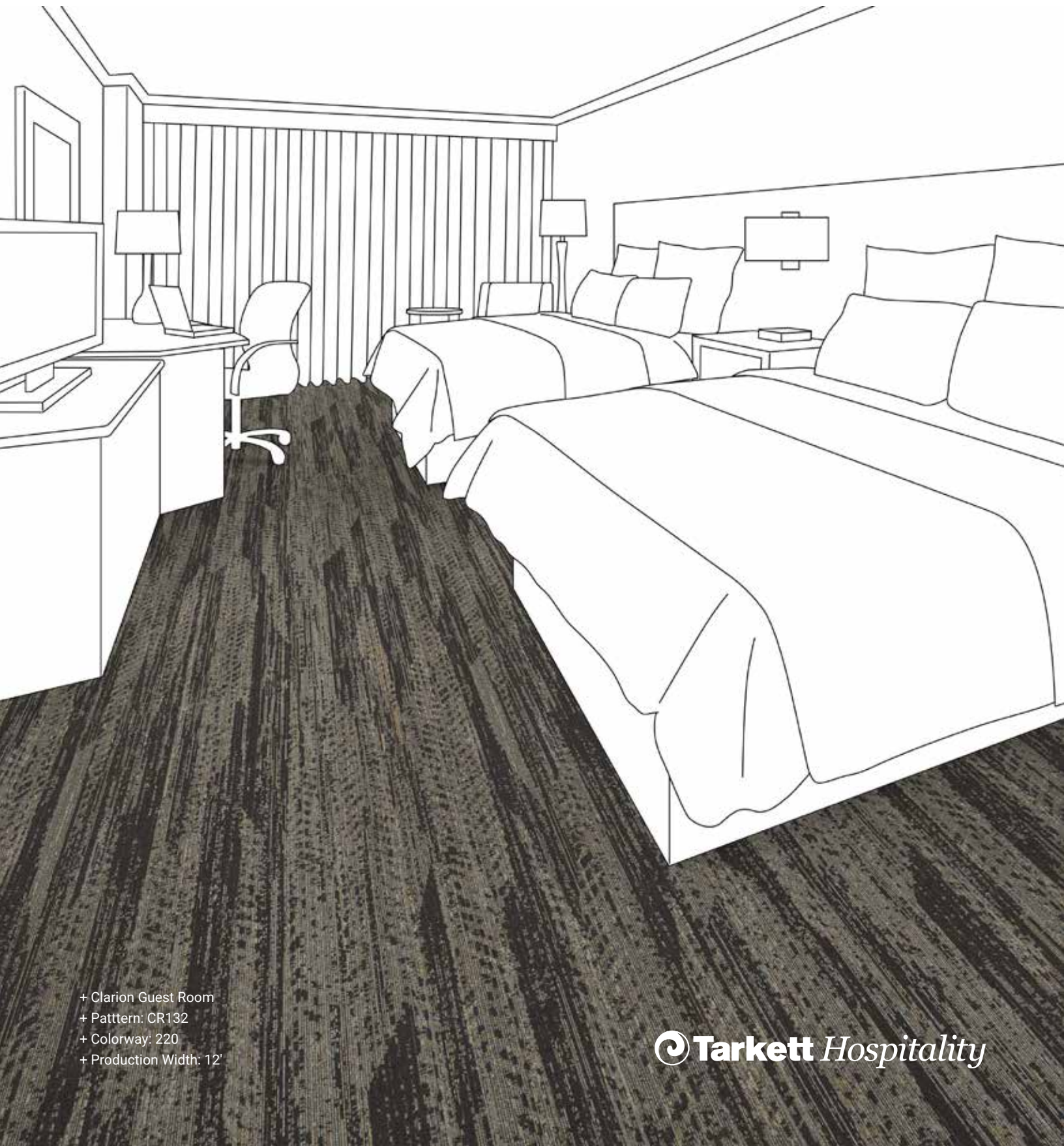
NOTE: Due to the manufacturing process of a tip shear product, the finished yarn weight will vary more than normal manufacturing tolerances and side match cannot be guaranteed.

Carpet should be installed in accordance with the Carpet and Rug Institute's standard CRI-104. Carpet must be over manufacturer's recommended pad. Pattern streaks and banding are visually apparent streaking in patterned carpet resulting from linear juxtaposition of pattern elements visible in both length and width direction. IT IS NOT A CARPET DEFECT, but is inherent in solution dyed graphic and cut/loop patterns. All Specifications subject to normal manufacturing tolerance.



# CHOICE HOTELS

Clarion Pointe, Guest Rooms



- + Clarion Guest Room
- + Pattern: CR132
- + Colorway: 220
- + Production Width: 12'

# CHOICE HOTELS

Clarion Pointe, Corridor



Manufacturer: Tarkett  
Address: 285 Kraft Drive  
Dalton, GA 30721  
Phone: 706.277.3000  
Contact: Jackie Passaro  
Jackie.Passaro@tarkett.com  
Contact: Amber Osiecki  
Amber.Osiecki@tarkett.com  
Web: www.tarketthospitality.com

## CORRIDOR

Style: CP136  
Color: 120  
Construction: Dynamics – Servo-Scroll Loop Tip Shear  
Fiber: 100% C.F. Lextron Enviro-Green Nylon  
Gauge: 1/10  
Tufted Pile Weight: 36 oz. Per Sq. Yard  
Pile Height: .250" High - .062" Low  
Stitches Per Inch: 12  
Primary Backing: Woven Polypropylene  
Secondary Backing: Unitary with Action Bac  
Dye: Solution Dyed  
Total Weight: 72 oz.  
Width: 12 ft.  
Radiant Panel: Class 1  
Smoke Density: Less than 450  
Pattern Repeat: 12"W x 20"L  
Warranty: 10-Year Wear Guarantee  
Traffic: Heavy (Corridor/Public Space)



1  
31.53%  
A-8519

2  
63.19%  
B-8517

Enviro-Green yarn has 10% pre-consumer recycled content.  
Recommended for Moderate (Rooms) carpet traffic levels.  
NOTE: Due to the manufacturing process of a tip shear product, the finished yarn weight will vary more than normal manufacturing tolerances and side match cannot be guaranteed.

Carpet should be installed in accordance with the Carpet and Rug Institute's standard CRI-104. Carpet must be over manufacturer's recommended pad. Pattern streaks and banding are visually apparent streaking in patterned carpet resulting from linear juxtaposition of pattern elements visible in both length and width direction. IT IS NOT A CARPET DEFECT, but is inherent in solution dyed graphic and cut/loop patterns. All Specifications subject to normal manufacturing tolerance.

# CHOICE HOTELS

Clarion Pointe, Guest Rooms



- + Clarion Public Space
- + Pattern: CR136
- + Colorway: 120
- + Production Width: 12'

 **Tarkett** Hospitality