

TREND EDIT

JULY



DÉCOLLAGE PAPIER

TARKETT HOSPITALITY

A CURATED COLLECTION OF TEXTILE
DESIGNS INSPIRED BY THE WORLD
AROUND US.



BROADLOOM

INTRO

As artists and visually driven people, our design team is constantly drawing inspiration from the world around us. We curate elements and ideas that are trending and use those as inspiration for a monthly collection of custom patterns.



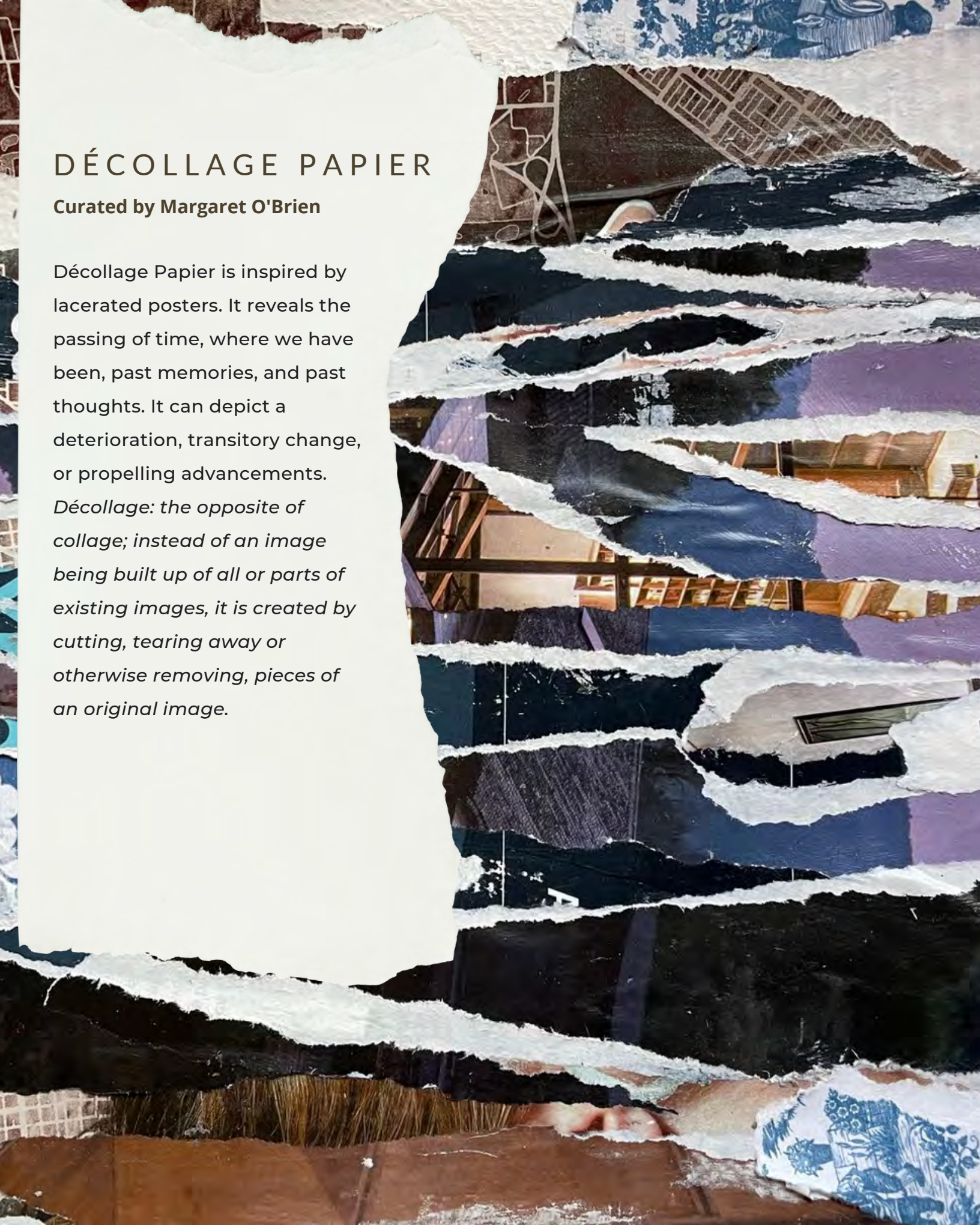
TARKETT HOSPITALITY

DÉCOLLAGE PAPIER

Curated by Margaret O'Brien

Décollage Papier is inspired by lacerated posters. It reveals the passing of time, where we have been, past memories, and past thoughts. It can depict a deterioration, transitory change, or propelling advancements.

Décollage: the opposite of collage; instead of an image being built up of all or parts of existing images, it is created by cutting, tearing away or otherwise removing, pieces of an original image.





21	194	20
4	19	
22		
22		
9		
6		
7	19	
29		
1		
P		

right for you

right for you

erviewit
d 95 I
tion
ravag
zed c
h fro
the fir
wel
jolic
wai
ested
ction
one
ac

95 I
snapped
"Oh, I get it,
"Oh, I get it,
st, is that i
kiss m
ar f



decisions with a pair of Crocs
knows long lead times
over the phone

agreed to be interviewed
over the phone

agreed to be interviewed
over the phone

agreed to be interviewed
over the phone

agreed to be interviewed
over the phone

agreed to be interviewed
over the phone

agreed to be interviewed
over the phone

agreed to be interviewed
over the phone

agreed to be interviewed
over the phone

INT245

Tarkett Hospitality

you
frag
is



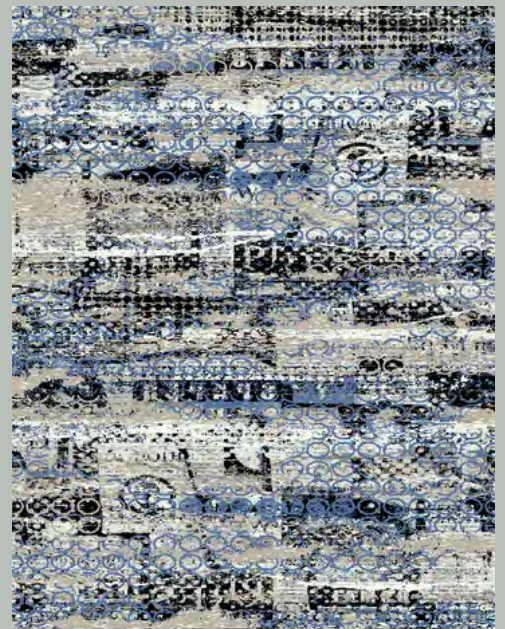
LP3267



LP916



IN3282



IN5-1068







V1721

Tarkett Hospitality

AV1720



Ba kut ma nga ma ker me yar H lan sul da Ke sar ora sel der J sa



W.A.
1756
A.D.
1841

Kon
ple - Chap
Klemen

Kon
ple - Chap
Klemen

Vstup
TICKET
PIS
PIS
L

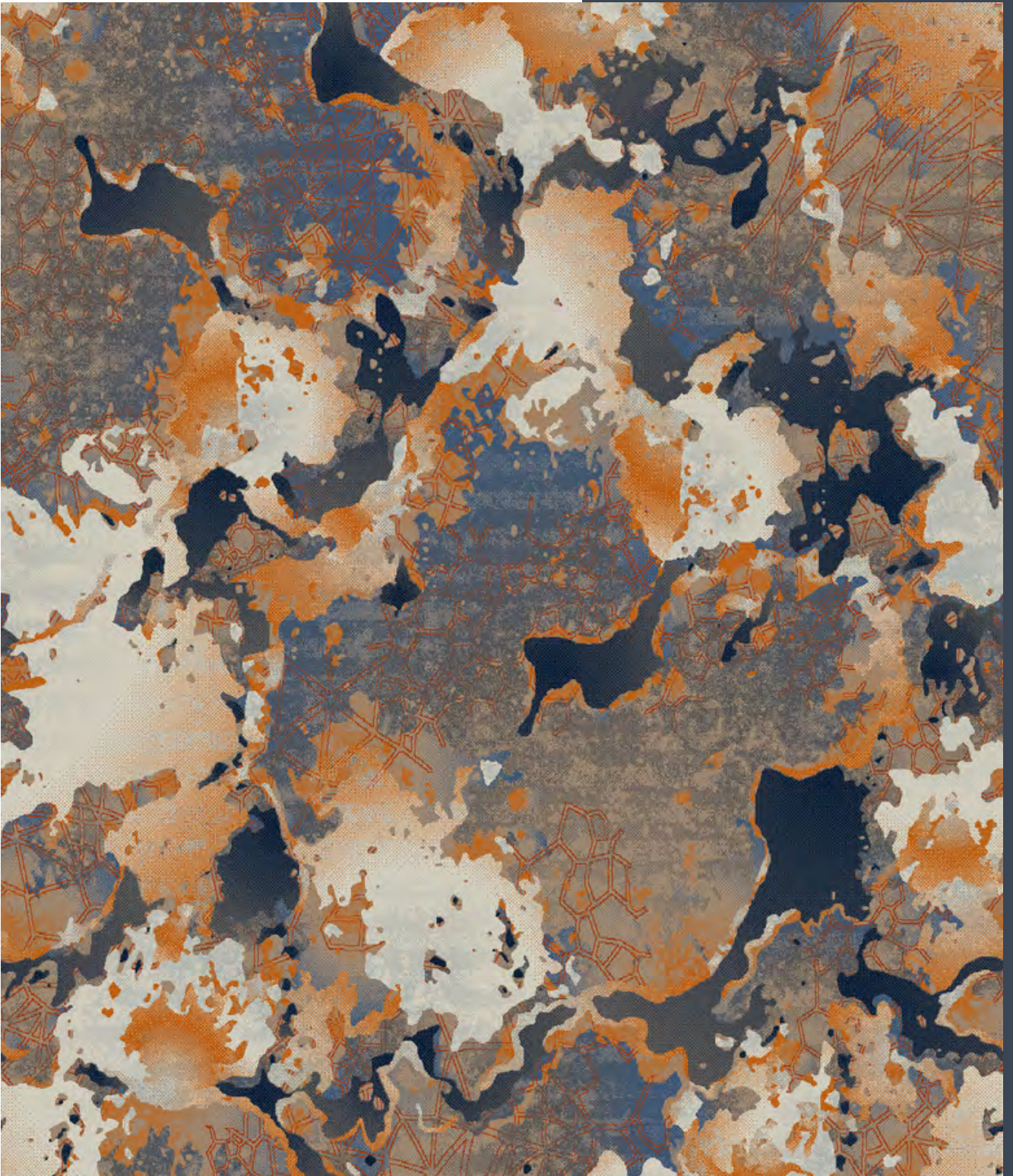
conference

Kon
ple - Chap
Klemen

Tarkett Hospitality
IN1246J



 **Tarkett** Hospitality
AX2164-7

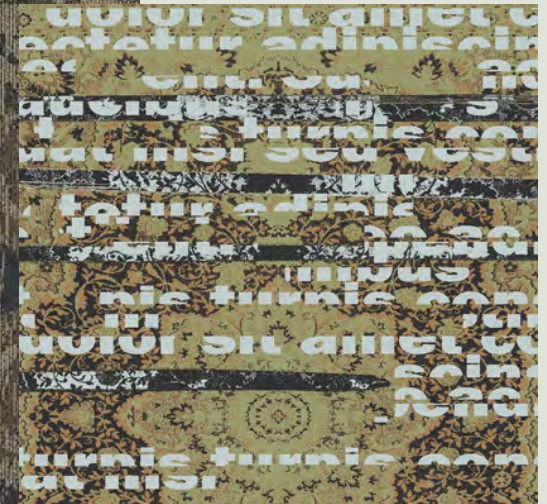


AX151-7

D5420



LP3277



IN6-1182



LP3278

 Tarkett Hospitality

Design Number: IN3282

Design Size: 78.00"W x 77.71"L

Repeat Type: SIDE MATCH

1 repeat shown- not to scale

1	2	3	4	21	22	23	24
A-8526C	3510C	5521C	5529C	C-8526L	3510L	5521L	5529L
12.26%	8.42%	3.92%	32.97%	5.51%	8.66%	3.38%	24.87%



Design Number: V1721

Design Size: 90.00"W x 72.00"L

Repeat Type: SM

1 repeat shown- not to scale

1	2	3	5	7	21	23	25	27
8002C	5509C	5522C	X391C	5524C	8002L	5522L	X391L	5524L
20.31%	8.96%	13.67%	5.34%	8.30%	10.47%	6.13%	6.56%	20.26%



Design Number: V1720

Design Size: 90.00"W x 120"L

Repeat Type: END MATCH

1 repeat shown- not to scale

1	2	3	4	5	6	7	21	25	27
8002C	5509C	5522C	X450C	X391C	1502C	5524C	8002L	X391L	5524L
19.53%	18.74%	8.21%	4.55%	4.72%	5.64%	8.43%	5.71%	7.75%	16.73%



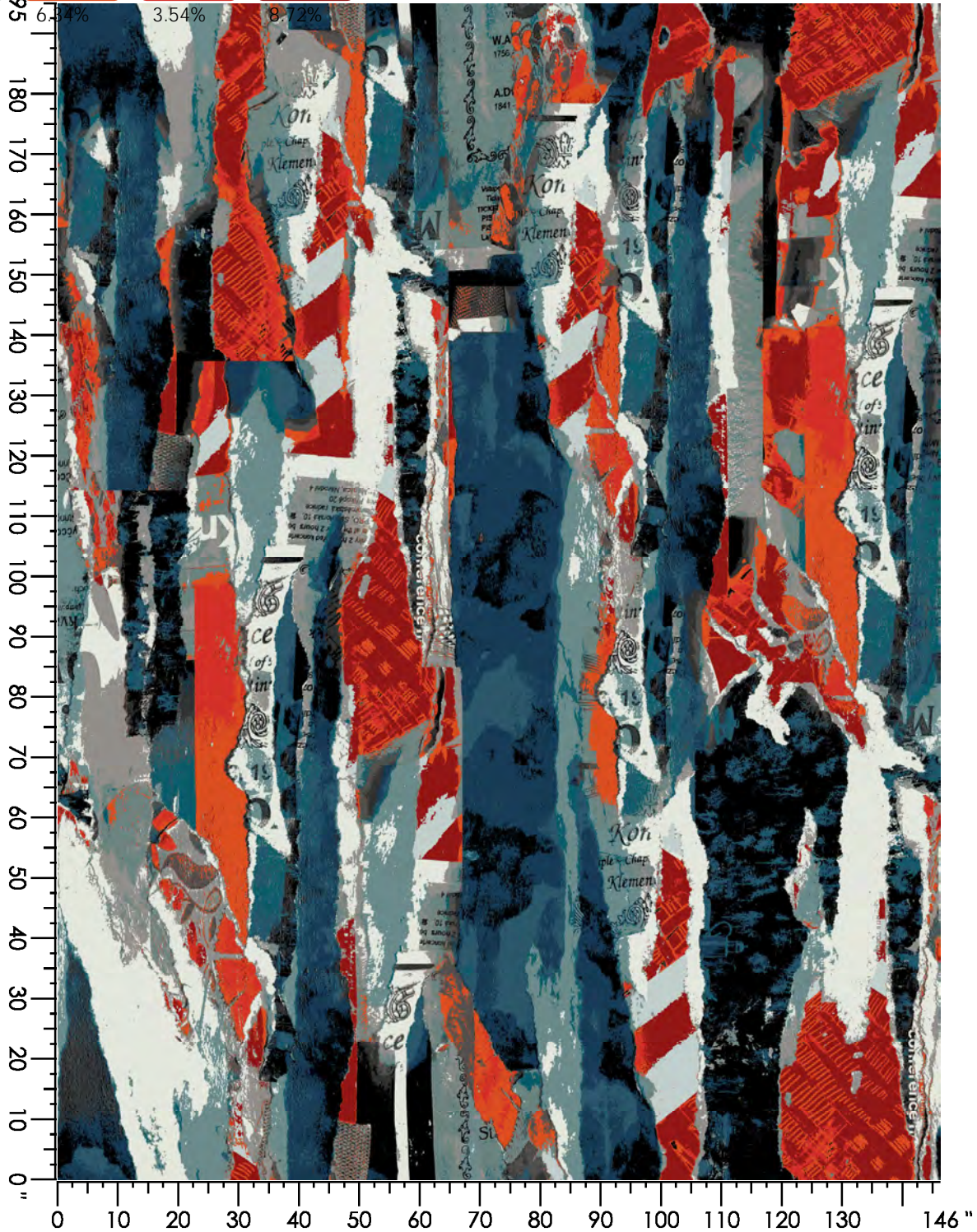
Design Number: INJ1246

Design Size: 146.24"W x 195.00"L

Repeat Type: SIDE MATCH

1 repeat shown- not to scale

1 E558 4.58%	2 D557 4.11%	3 E876 8.48%	4 A875 11.63%	5 A878 11.84%	6 C878 5.99%	7 B880 3.94%	8 K880 8.41%	9 D877 6.93%	10 F990 13.56%	
11 B558 1.93%	12 L764 6.34%	13 F768 3.54%	14 B765 8.72%							



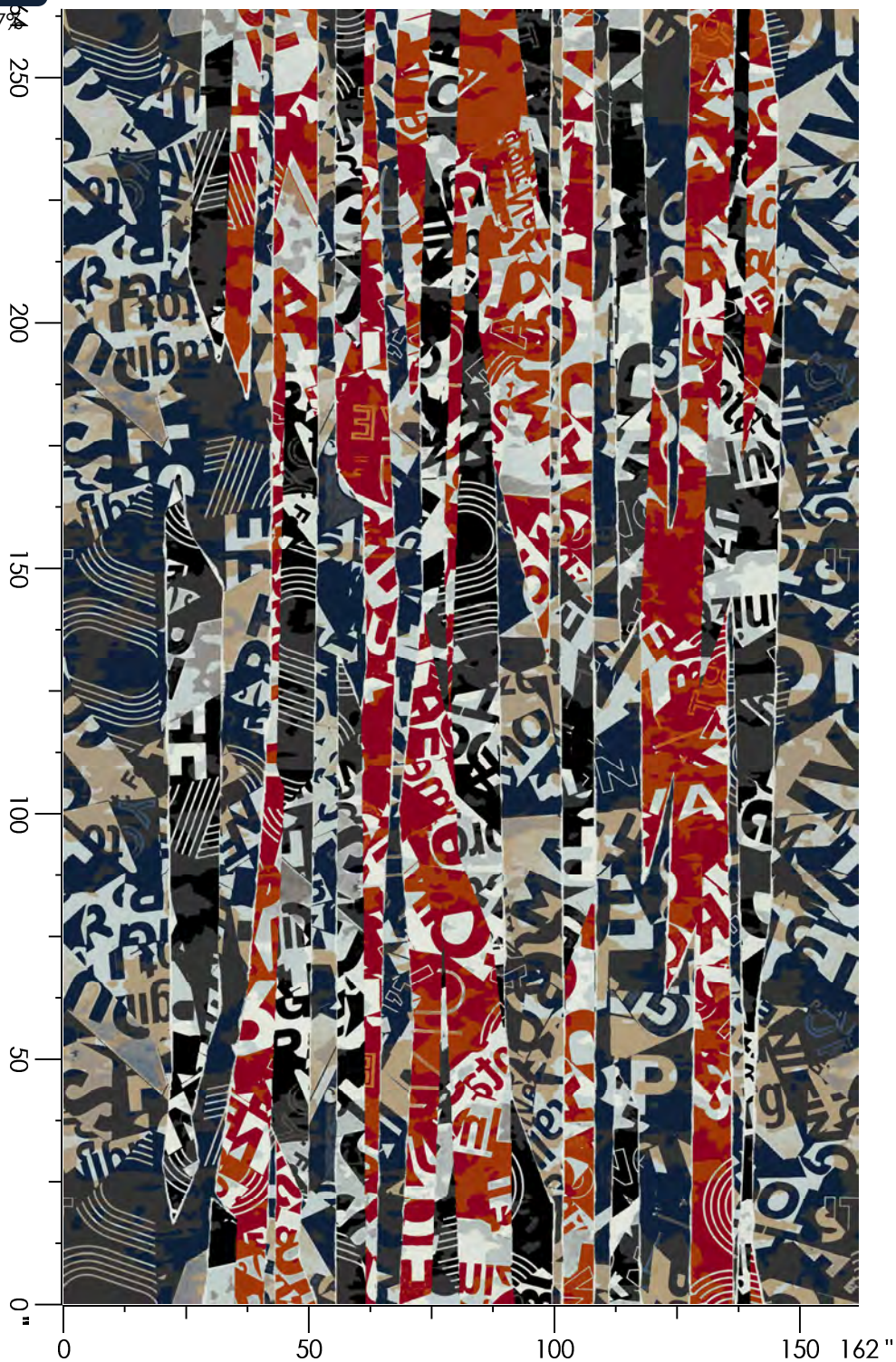
Design Number: INJ1216 MO

Design Size: 162.00"W x 264.00"L

Repeat Type: SIDE MATCH

1 repeat shown- not to scale

1 F990 10.25%	2 B558 15.45%	3 H654 8.08%	4 E876 3.18%	5 D557 1.34%	6 E558 19.01%	7 A875 7.56%	8 D762 0.78%	9 C761 7.14%	10 C768 10.25%
11 D874 0.57%	12 C873 16.37%								



Design Number: INJ1245

Design Size: 82.28"W x 109.72"L

Repeat Type: END MATCH

1 repeat shown- not to scale

1 E558 15.16%	2 D557 8.25%	3 E876 16.92%	4 B558 24.40%	5 A556 8.77%	6 C768 5.61%	7 D762 2.84%	8 M887 5.97%	9 D874 4.89%	10 C984 4.78%
11 L655 2.13%	12 K990 0.28%								



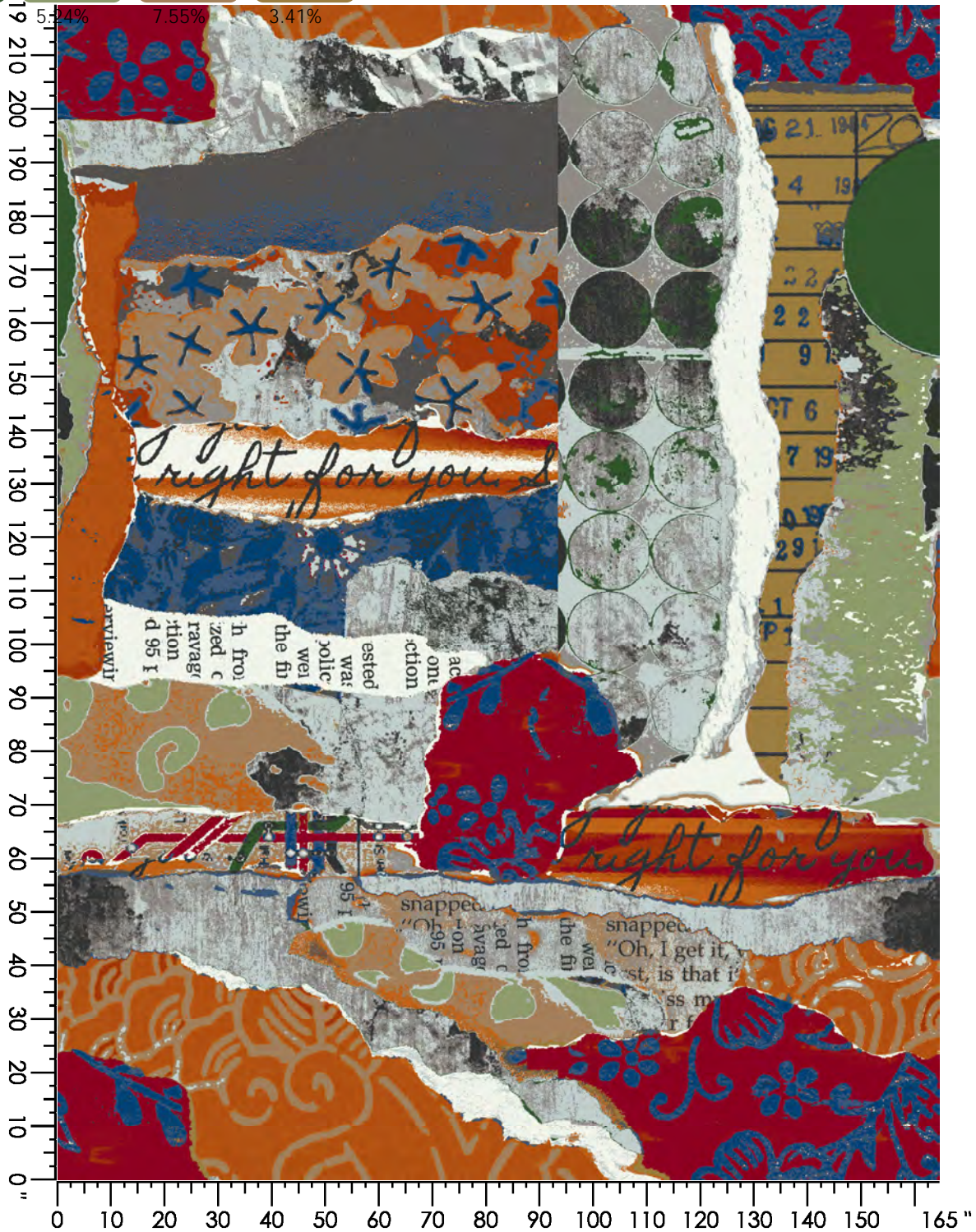
Design Number: INJ1208

Design Size: 164.56"W x 219.40"L

Repeat Type: SIDE MATCH

1 repeat shown- not to scale

1 E558 6.21%	2 D557 8.99%	3 E876 10.89%	4 B558 13.91%	5 A556 7.60%	6 C768 9.77%	7 C761 5.85%	8 D762 8.29%	9 M887 4.35%	10 D874 4.93%		
11 C984 3.03%	12 E983 5.24%	13 L655 7.55%	14 K990 3.41%								



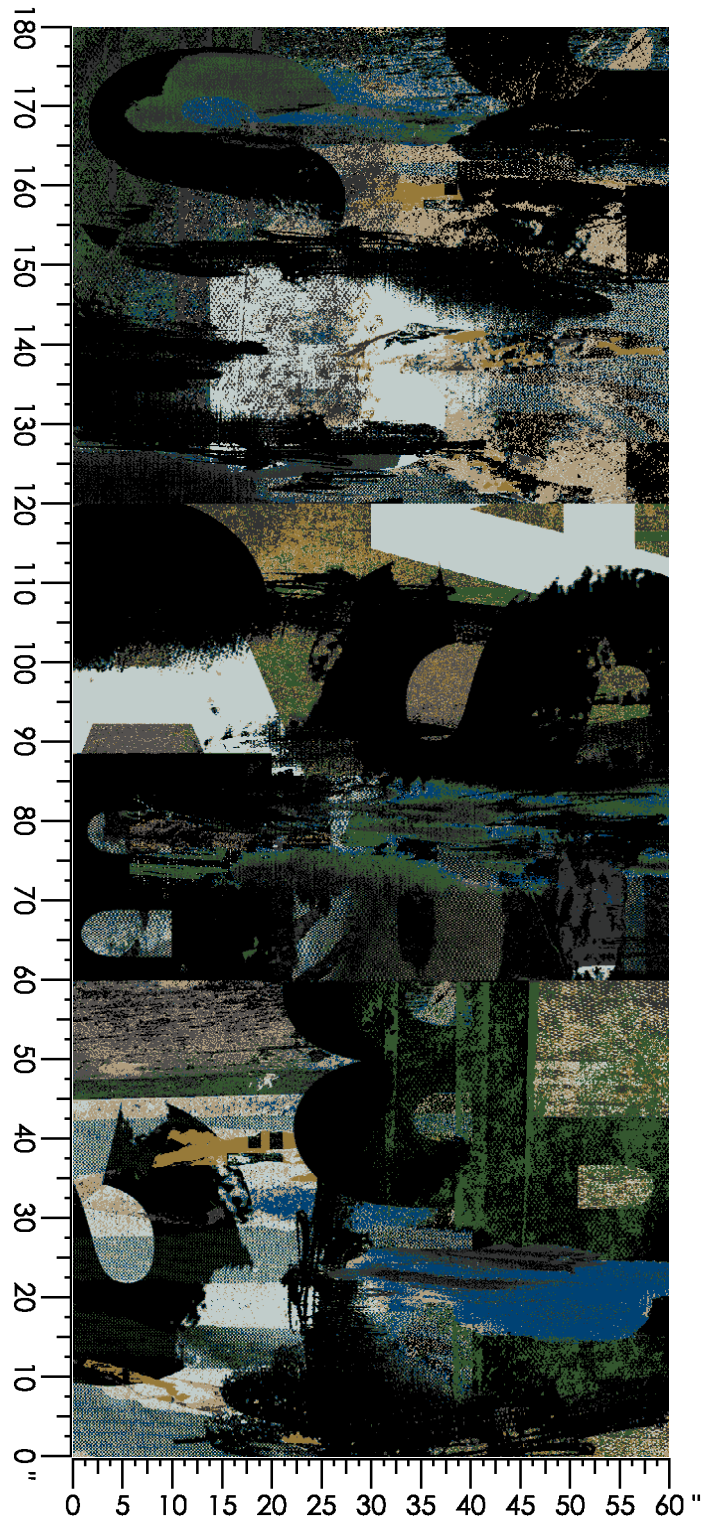
Design Number: LP916 MK

Design Size: 60.00"W x 180.00"L

Repeat Type: BROADLOOM

1 repeat shown- not to scale

1	2	3	4	5	6	7	8
8002C	X452C	8517C	5530C	4524C	3548C	7021C	X432C
51.45%	10.41%	3.09%	5.79%	10.25%	2.53%	7.44%	9.03%



Design Number: LP3277 MK

Design Size: 165.00"W x 165.00"L

Repeat Type: Non Repeating Rug

1 repeat shown- not to scale

1	2	3	4
X452C	3009C	4529C	X432C
27.26%	21.48%	27.48%	23.77%



Design Number: LP3267

Design Size: 90.00"W x 114.00"L

Repeat Type: SIDEMATCH

1 repeat shown- not to scale

1	2	3	4	5	6	7	8
X452C	8517C	2506C	X391C	3009C	8501C	X432C	8526C
47.47%	4.25%	1.01%	1.15%	6.01%	10.38%	9.44%	20.29%



Design Number: INJ1217 MO

Design Size: 162.00"W x 264.00"L

Repeat Type: SIDE MATCH

1 repeat shown- not to scale

2	3	4	5	6	11	12
B558	H654	E876	D557	E558	D874	C873
15.60%	16.56%	3.02%	1.71%	26.25%	1.11%	35.75%



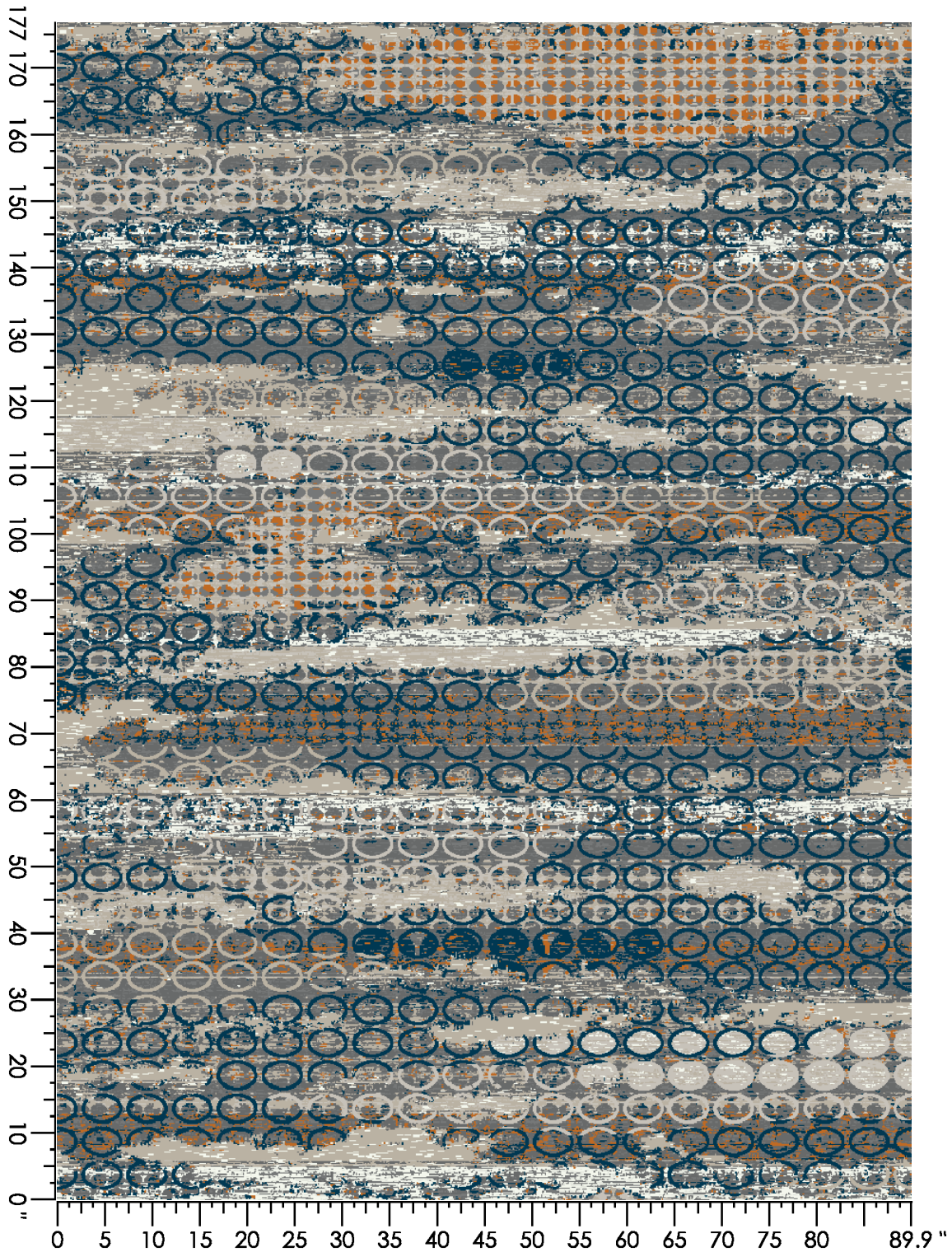
Design Number: IN5-1069 SS

Design Size: 90.00"W x 177.14"L

Repeat Type: END MATCH

1 repeat shown- not to scale

1	2	3	4	21	22	23	25
1507C	8526C	8531C	5529C	1507L	8526L	8531L	3508L
1.28%	21.47%	26.38%	18.15%	4.47%	9.62%	13.56%	5.07%



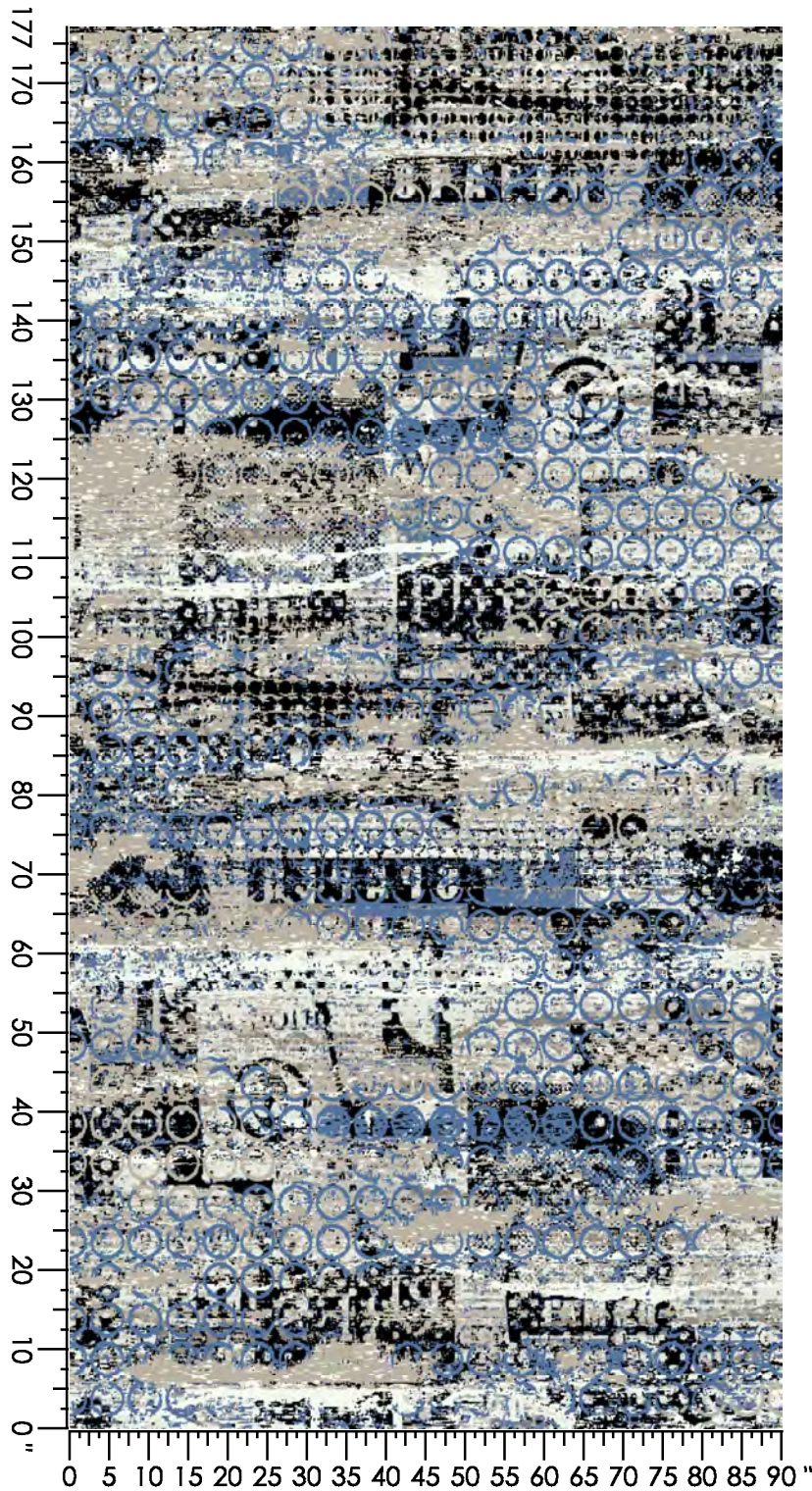
Design Number: IN5-1068 SS

Design Size: 90.00"W x 177.14"L

Repeat Type: END MATCH

1 repeat shown- not to scale

1	2	3	5	21	22	23	24
1507C	8526C	3510C	8002C	1507L	8526L	3510L	5521L
12.74%	21.99%	1.99%	18.27%	9.13%	6.48%	6.08%	23.31%



Design Number: IN6-1182 LD

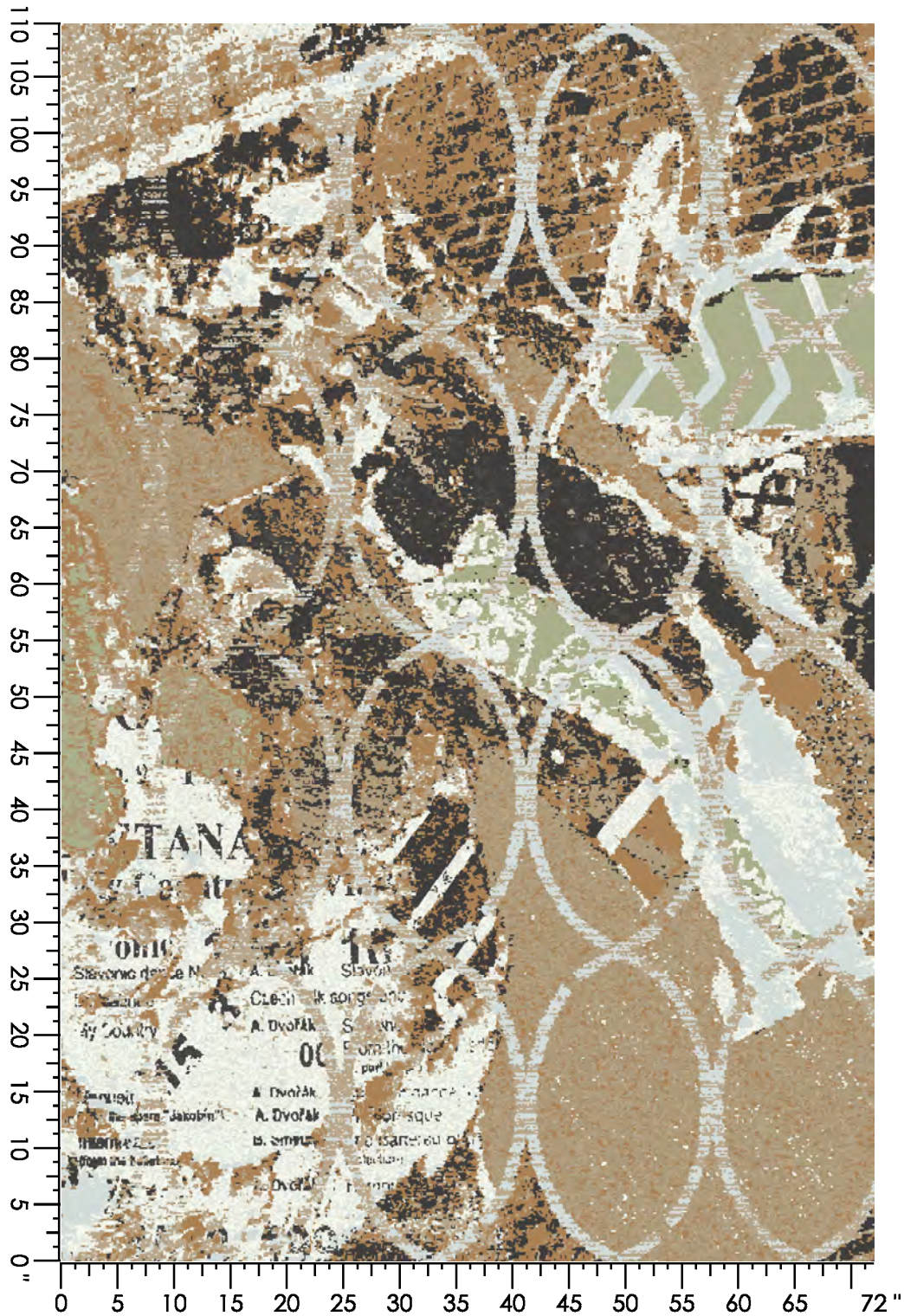


Design Size: 72.00"W x 109.71"L

Repeat Type: END MATCH

1 repeat shown- not to scale

1	3	4	6	21	22	23	24	25	26
A-X452C	C-4529C	D-7021C	F-1507C	A-X452L	B-3009L	C-4529C	D-7021L	E-X432L	F-1507L
16.17%	1.36%	12.89%	8.84%	1.45%	18.62%	2.39%	17.99%	10.99%	9.29%



Design Number: LP3278

Design Size: 96.00"W x 120.00"L

Repeat Type: NO SIDE MATCH

1 repeat shown- not to scale

1	2	3	4	5	6	7	8
X394C	X390C	X448C	2514C	7512C	8532C	3543C	1507C
7.87%	8.41%	8.97%	15.53%	18.21%	13.28%	18.50%	9.23%



Style: D5420

Color: DECOLLAGE PAPIER

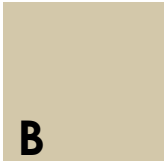
Repeat Type: SIDE MATCH

Product Type: Dynamics



A

lx hosp yrns
X390



B

lx hosp yrns
3523



C

lx hosp yrns
3529



Design Number: AX2164-7 LD

Design Size: 157.71"W x 209.43"L

Repeat Type: AREA RUG

1 repeat shown- not to scale

1 A875 9.01%	2 E558 5.20%	3 C873 3.81%	4 D557 9.62%	5 C761 9.18%	6 D874 2.49%	7 C558 10.32%	8 K990 2.85%	9 D762 1.60%	10 K653 6.85%
11 L655 11.08%	12 E876 2.53%	13 B552 13.64%	14 B558 2.89%	15 F990 8.82%					

209
200
190
180
170
160
150
140
130
120
110
100
90
80
70
60
50
40
30
20
10
0"



0 10 20 30 40 50 60 70 80 90 100 110 120 130 140 158"

Design Number: AX151-7 LD

Design Size: 157.71"W x 192.00"L

Repeat Type: SIDEMATCH

1 repeat shown- not to scale

1	2	3	4	5	6	7	8
H653	D557	C761	D874	C873	B552	D762	B558
25.24%	20.43%	4.32%	8.20%	6.58%	16.85%	12.15%	6.23%

