

HOSPITALITY | MONTHLY TREND

BLOTTED

curated by Margaret O'Brien



Blotted is the juxtaposition of flowing textures and erratic lines. Presented in warm neutrals with dramatic slashes of black; blotted brings the drama. Artistic chaos draws a sense of release and breathes expressive mark making while channeling a modern Pollock.



 **Tarkett** *Hospitality*

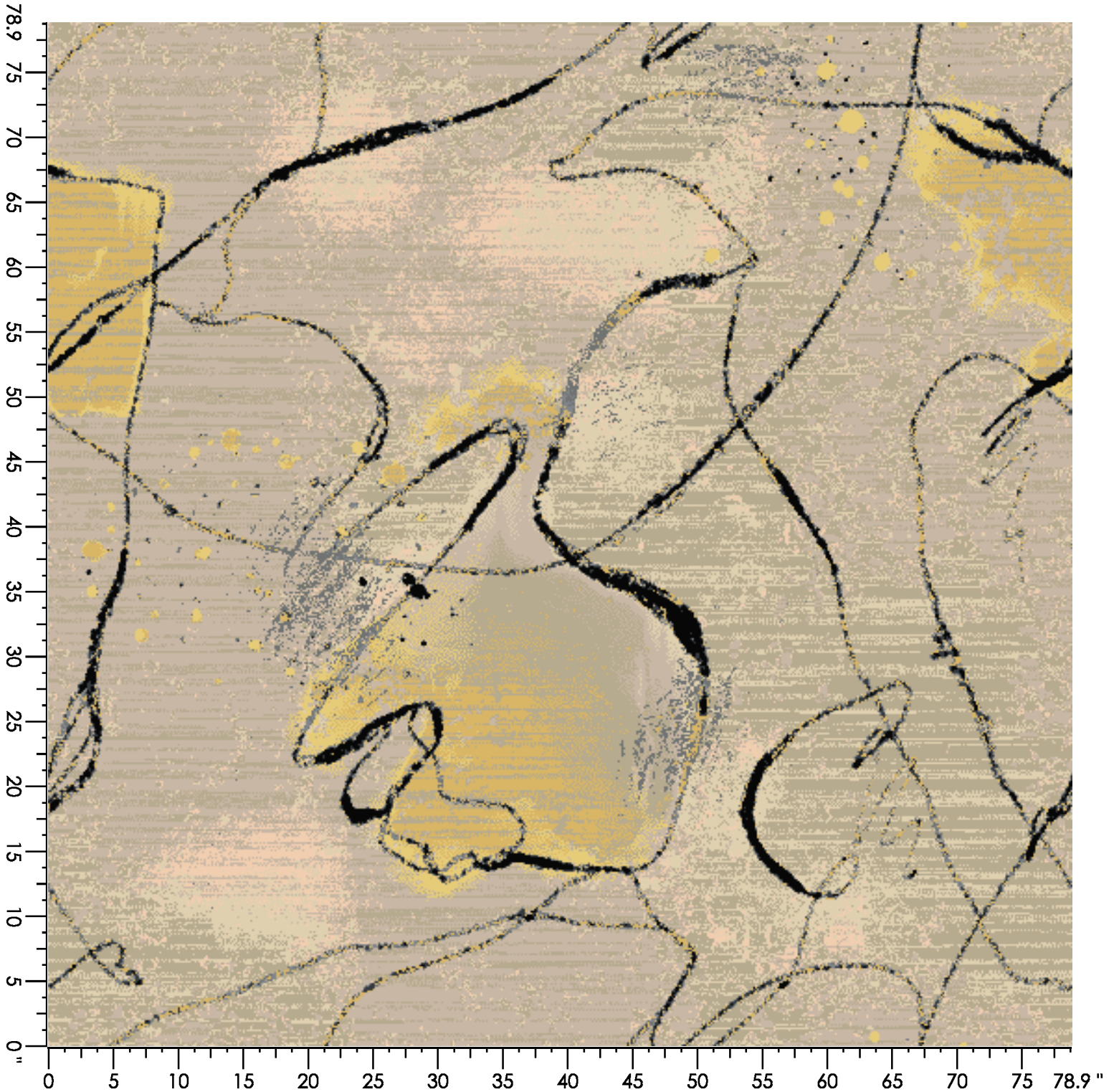
Design Number: AX1265-7 LD

Design Size: 78.86"W x 78.86"L

Repeat Type: SIDEMATCH

1 repeat shown- not to scale

| 1 | 2 | 3 | 4 | 5 | 6 | 7 | 8 | 9 | 10 |
|-------|-------|-------|-------|--------|-------|--------|-------|--------|-------|
| A875 | D559 | C556 | C555 | H653 | D660 | H652 | H660 | D655 | H762 |
| 2.12% | 2.01% | 2.08% | 1.33% | 33.10% | 6.18% | 30.81% | 2.88% | 14.13% | 5.36% |



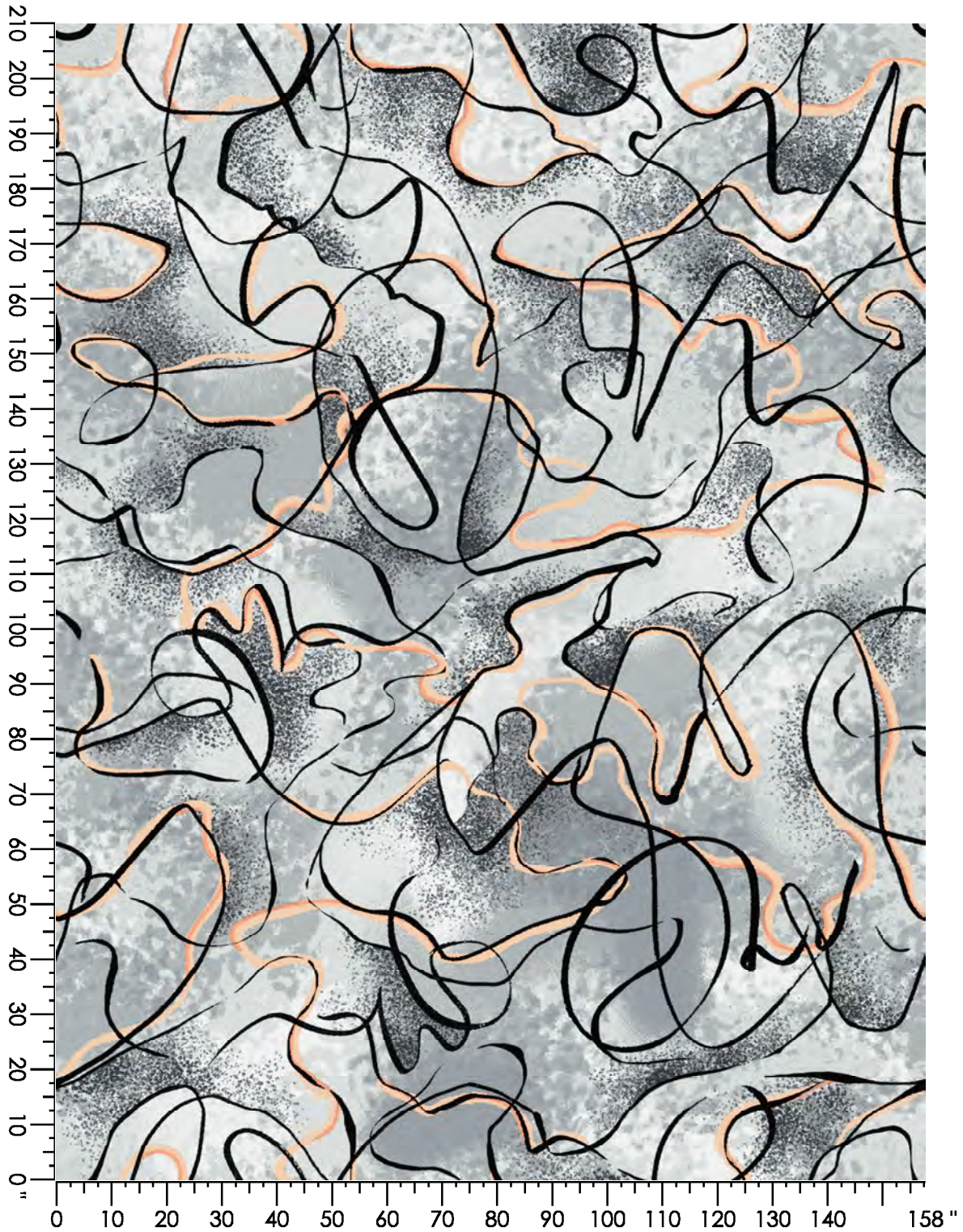
Design Number: AX1276-8 MO

Design Size: 157.71"W x 210.00"L

Repeat Type: SIDE MATCH

1 repeat shown- not to scale

| | | | | | | | | | |
|--------|-------|-------|-------|--------|--------|--------|-------|-------|-------|
| 1 | 2 | 3 | 4 | 5 | 6 | 7 | 8 | 9 | 10 |
| A875 | D559 | C556 | C555 | B560 | B556 | A558 | A556 | F766 | H762 |
| 10.31% | 3.41% | 2.74% | 6.23% | 11.50% | 22.40% | 28.61% | 8.12% | 1.30% | 5.37% |



Design Number: AX1278-7 LD

Design Size: 157.71"W x 223.00"L

Repeat Type: SIDEMATCH

1 repeat shown- not to scale

| | | | | | | | | | |
|----------------------|---------------------|---------------------|----------------------|--------------------|--------------------|--------------------|--------------------|--------------------|---------------------|
| 1 D559 5.08% | 2 M656 0.15% | 3 C556 5.36% | 4 C555 2.51% | 5 B560 1.77% | 6 H653 2.70% | 7 D660 4.68% | 8 B556 3.15% | 9 F766 0.56% | 10 H652 6.88% |
| 11 D655 25.47% | 12 H762 4.53% | 13 F652 8.19% | 14 A558 28.95% | | | | | | |



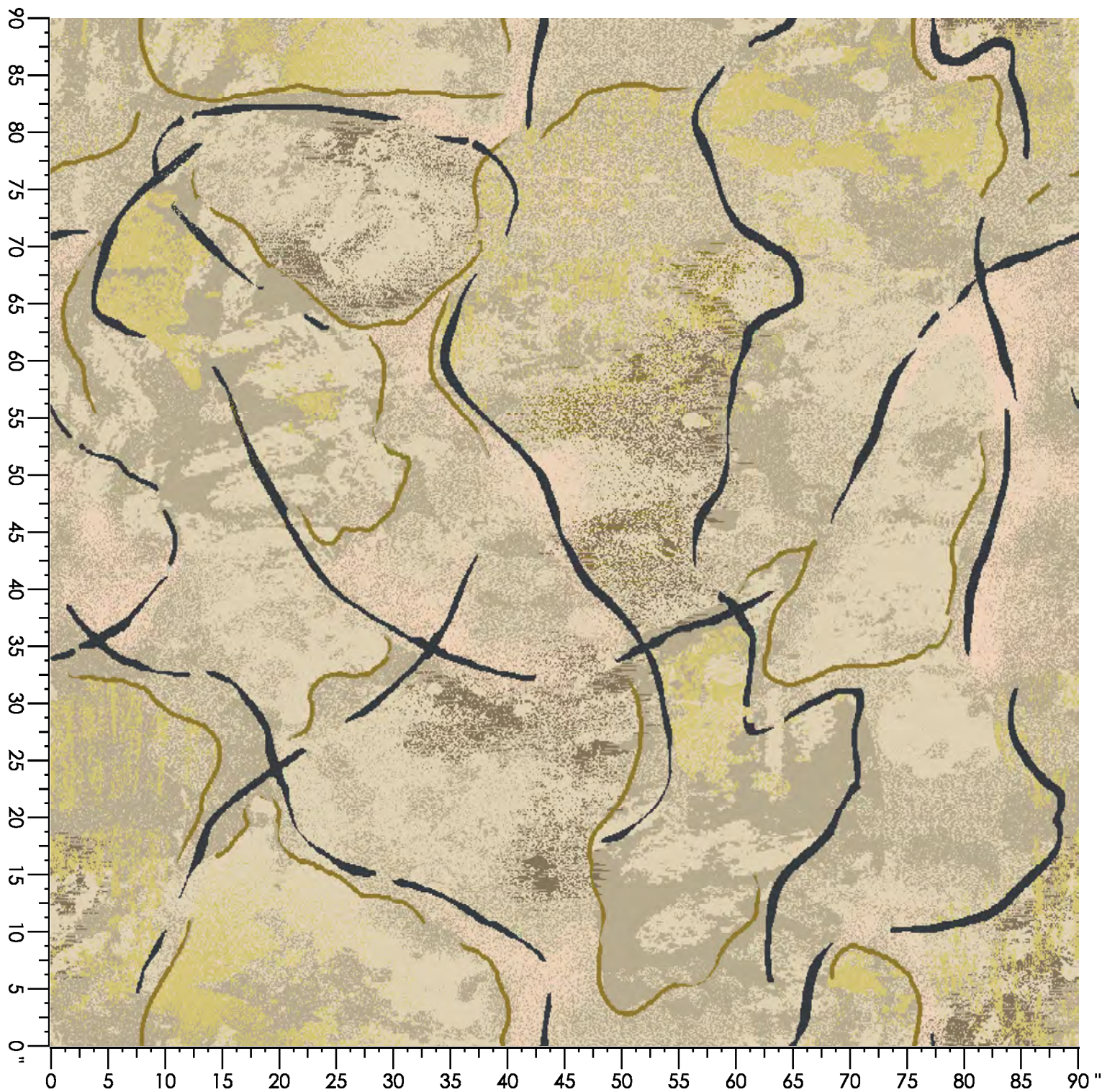
Design Number: LP2268

Design Size: 90.00"W x 90.00"L

Repeat Type: SM

1 repeat shown- not to scale

| | | | | | | |
|-------|--------|-------|--------|-------|-------|-------|
| 1 | 2 | 3 | 4 | 5 | 6 | 7 |
| 3537C | 3523C | 3507C | 3526C | 4512C | 8523C | 8004C |
| 5.65% | 41.47% | 9.03% | 34.32% | 2.25% | 3.23% | 4.05% |



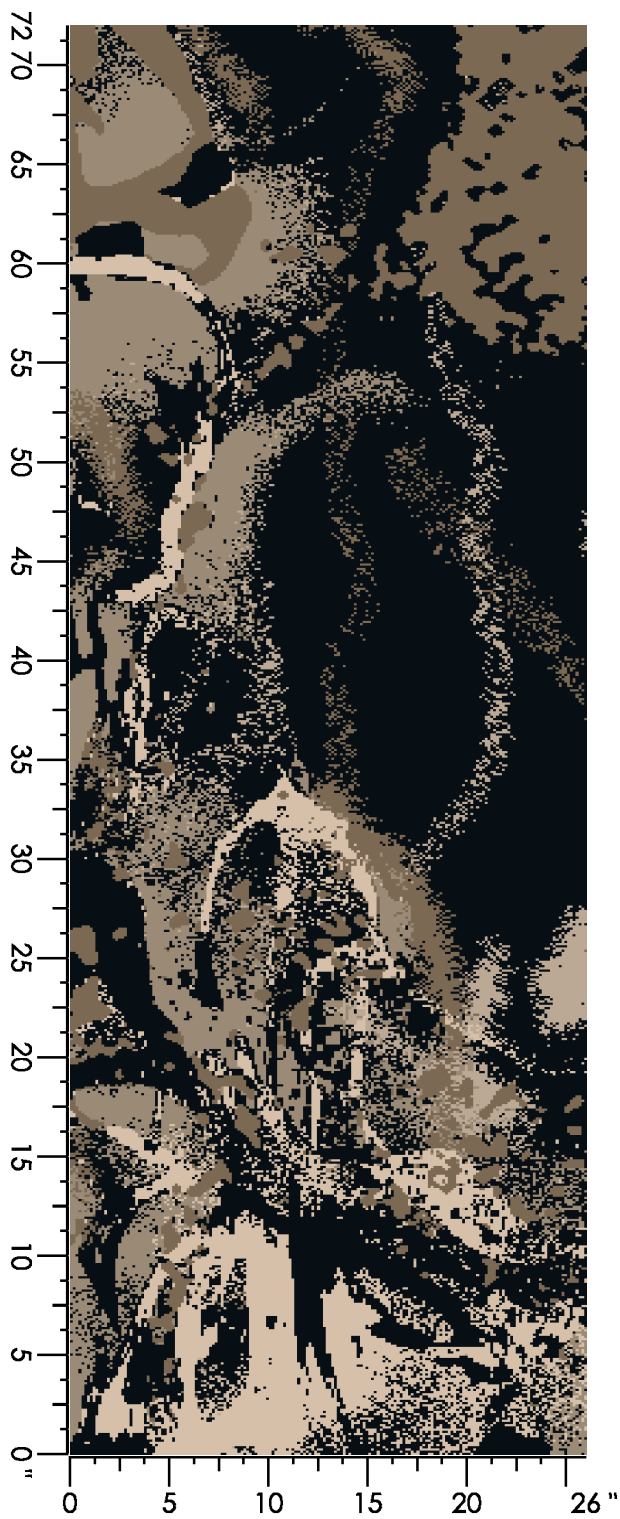
Design Number: AX1259-9 SG

Design Size: 26.00"W x 72.00"L

Repeat Type: NO SIDE MATCH

1 repeat shown- not to scale

| | | | | |
|--------|--------|-------|--------|--------|
| 1 | 2 | 3 | 4 | 5 |
| A875 | H653 | H652 | K654 | F652 |
| 55.83% | 13.67% | 3.30% | 15.74% | 11.45% |



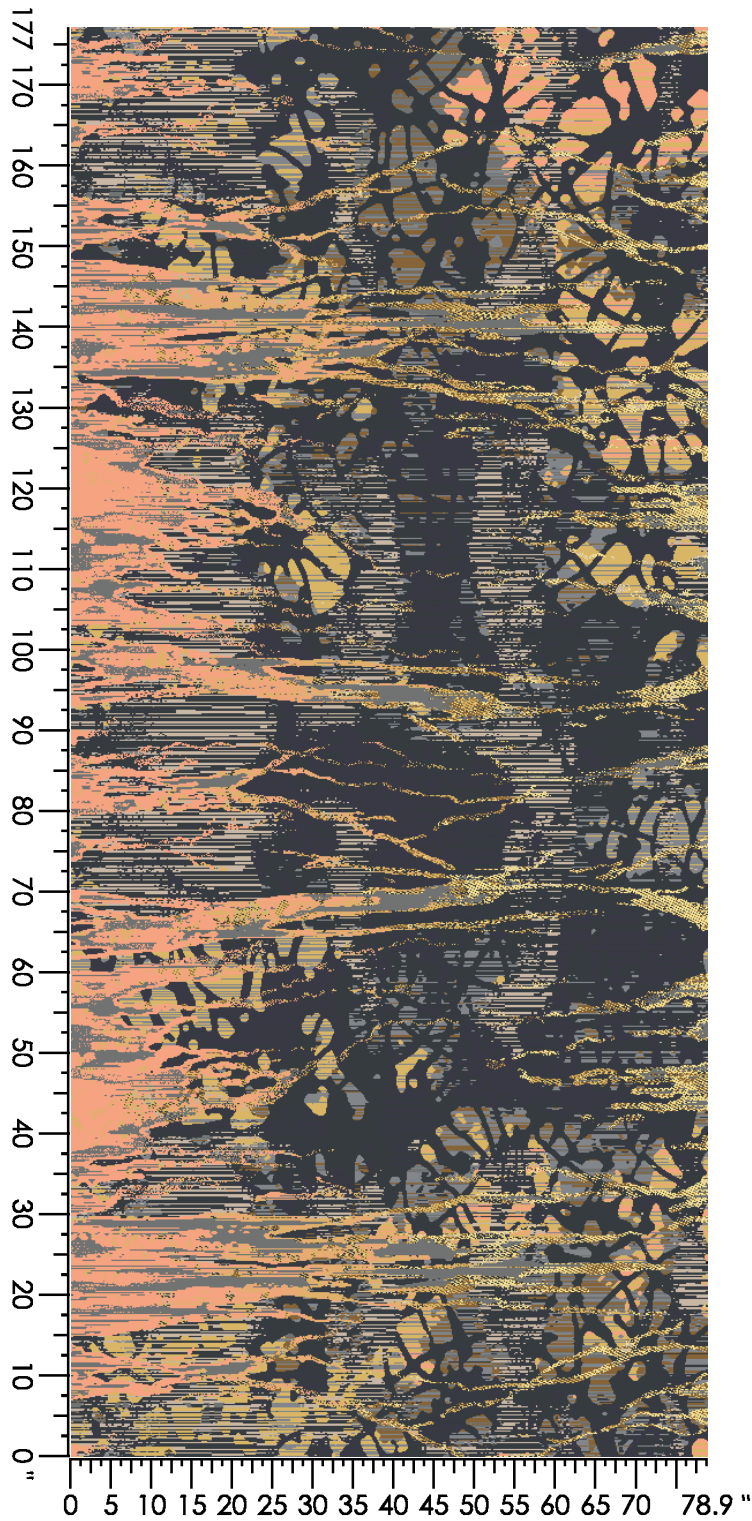
Design Number: AX1300-7 KE

Design Size: 78.86"W x 177.14"L

Repeat Type: END MARCH

1 repeat shown- not to scale

| | | | | | | | | | |
|-------|--------|--------|-------|-------|-------|-------|--------|-------|-------|
| 1 | 2 | 3 | 4 | 5 | 6 | 7 | 8 | 9 | 10 |
| A875 | D559 | B876 | M656 | C556 | C555 | D660 | F766 | H652 | H660 |
| 0.00% | 38.23% | 14.02% | 4.57% | 7.54% | 5.83% | 8.82% | 11.44% | 7.09% | 2.46% |



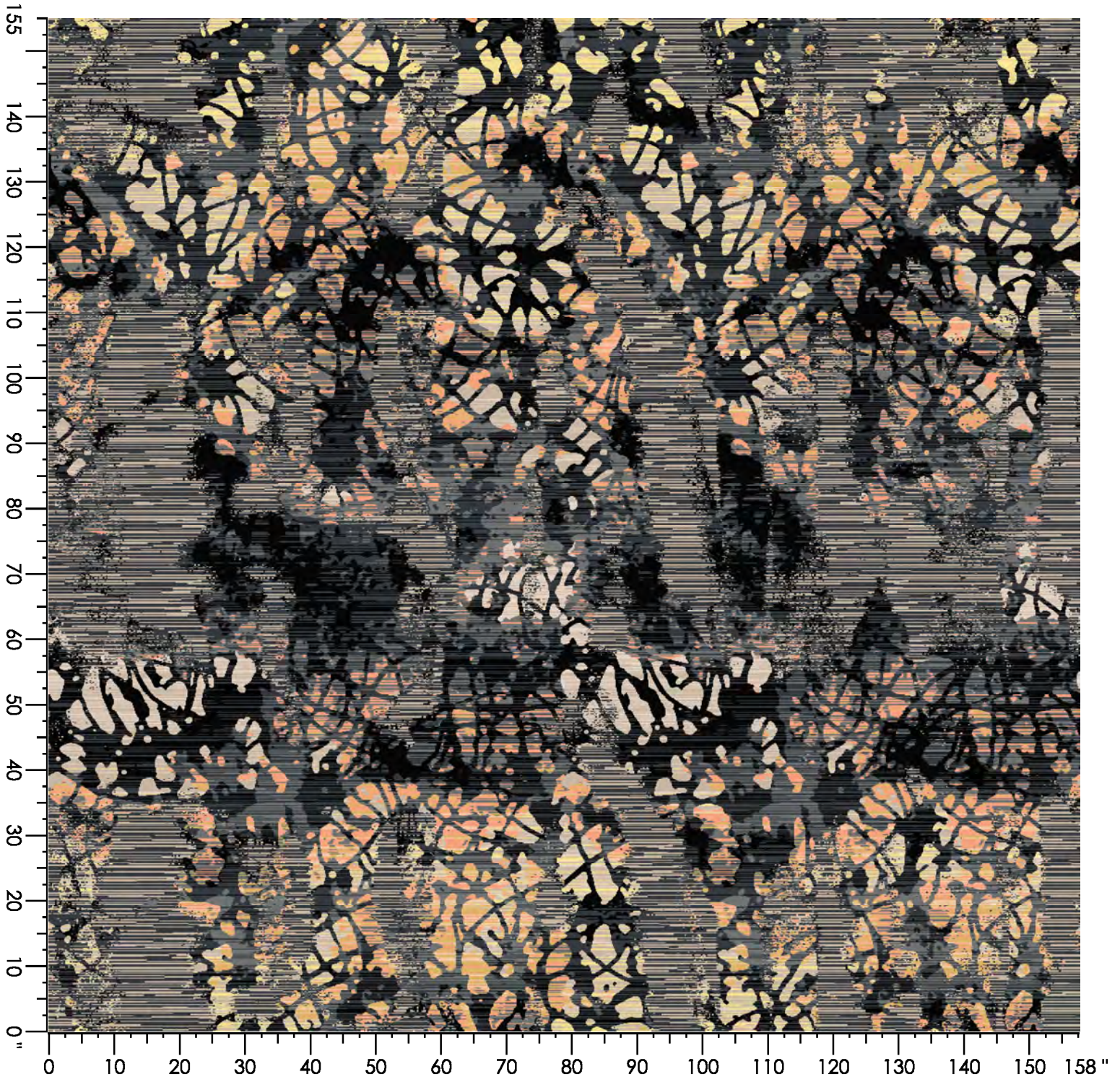
Design Number: AX1302-8 KE

Design Size: 157.71"W x 155.00"L

Repeat Type: SIDE MATCH

1 repeat shown- not to scale

| | | | | | | | | |
|--------|--------|--------|-------|-------|--------|-------|-------|-------|
| 1 | 2 | 3 | 4 | 5 | 6 | 7 | 8 | 9 |
| A875 | D559 | C556 | D660 | F766 | H652 | H762 | F652 | H660 |
| 18.59% | 38.85% | 12.73% | 2.99% | 5.19% | 16.12% | 1.48% | 1.92% | 2.15% |



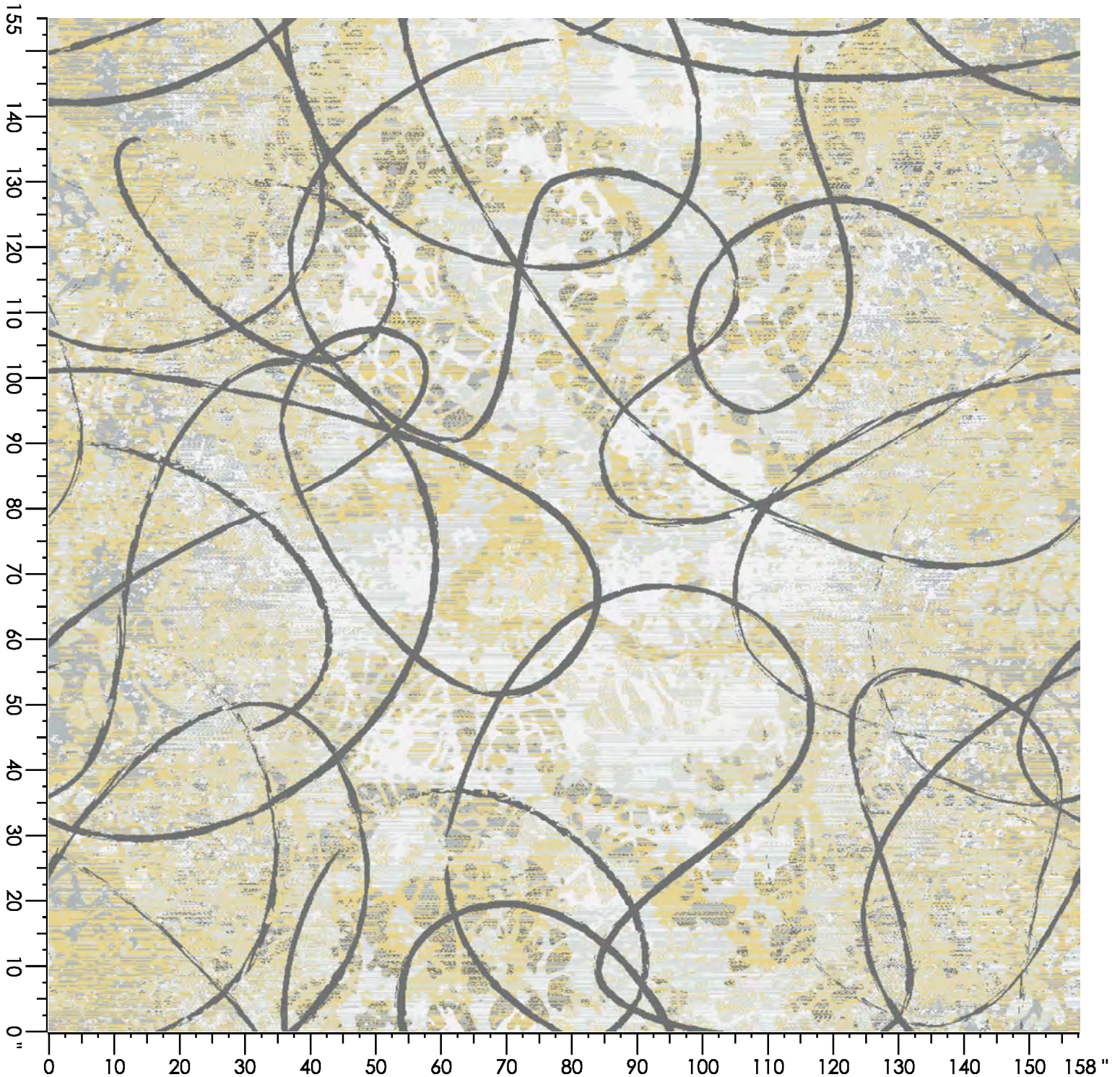
Design Number: AX1304-8 KE

Design Size: 157.71"W x 155.00"L

Repeat Type: SIDE MATCH

1 repeat shown- not to scale

| | | | | |
|--------|--------|--------|--------|--------|
| 1 | 2 | 3 | 4 | 5 |
| C556 | B556 | A558 | A556 | E660 |
| 10.98% | 12.49% | 30.95% | 19.99% | 25.59% |



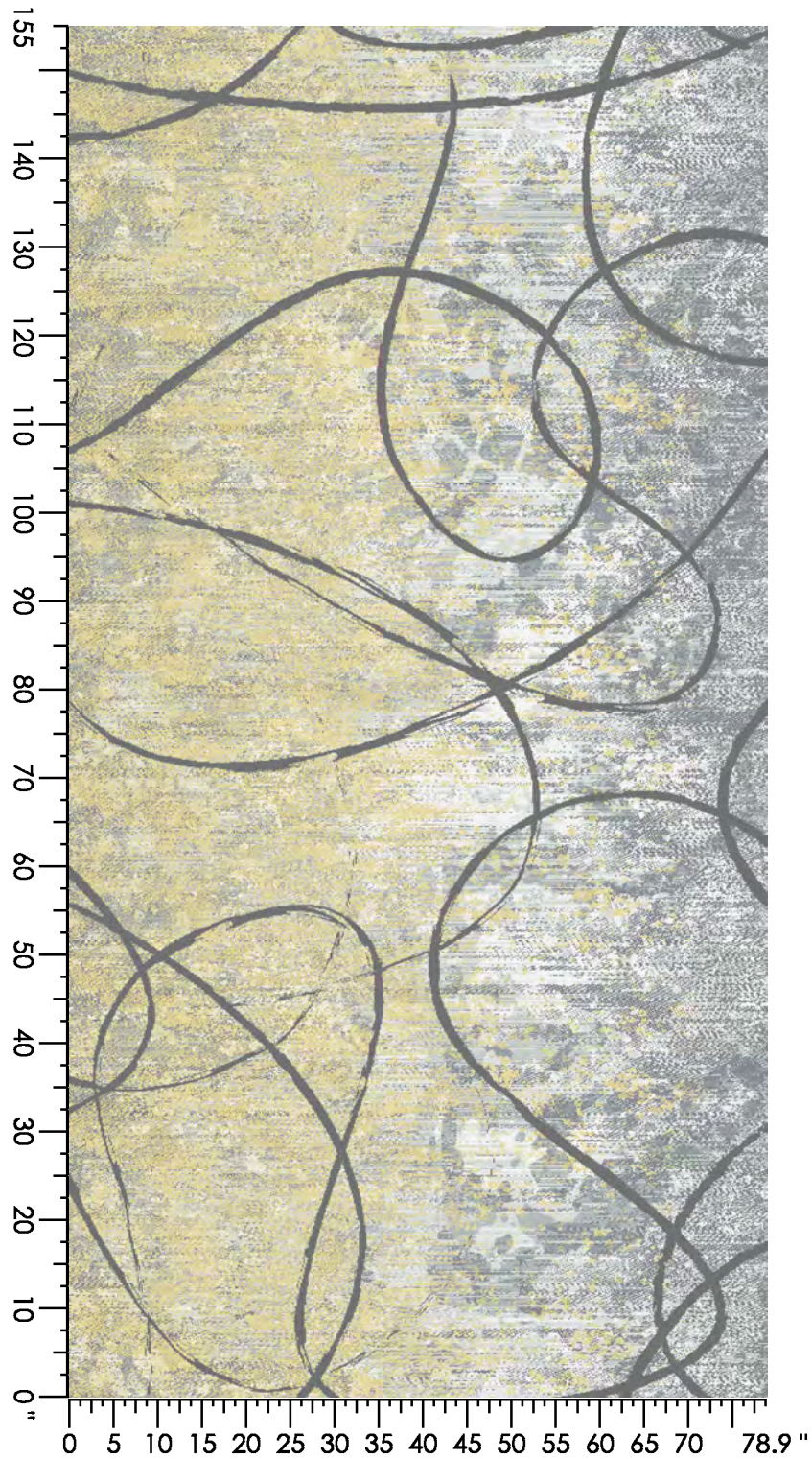
Design Number: AX1305-8 KE

Design Size: 78.86"W x 155.00"L

Repeat Type: END MATCH

1 repeat shown- not to scale

| | | | | | | |
|-------|--------|-------|--------|--------|--------|--------|
| 1 | 2 | 3 | 4 | 5 | 6 | 7 |
| C556 | C555 | B560 | B556 | E660 | A558 | A556 |
| 8.07% | 14.87% | 5.74% | 12.68% | 26.66% | 19.35% | 12.62% |



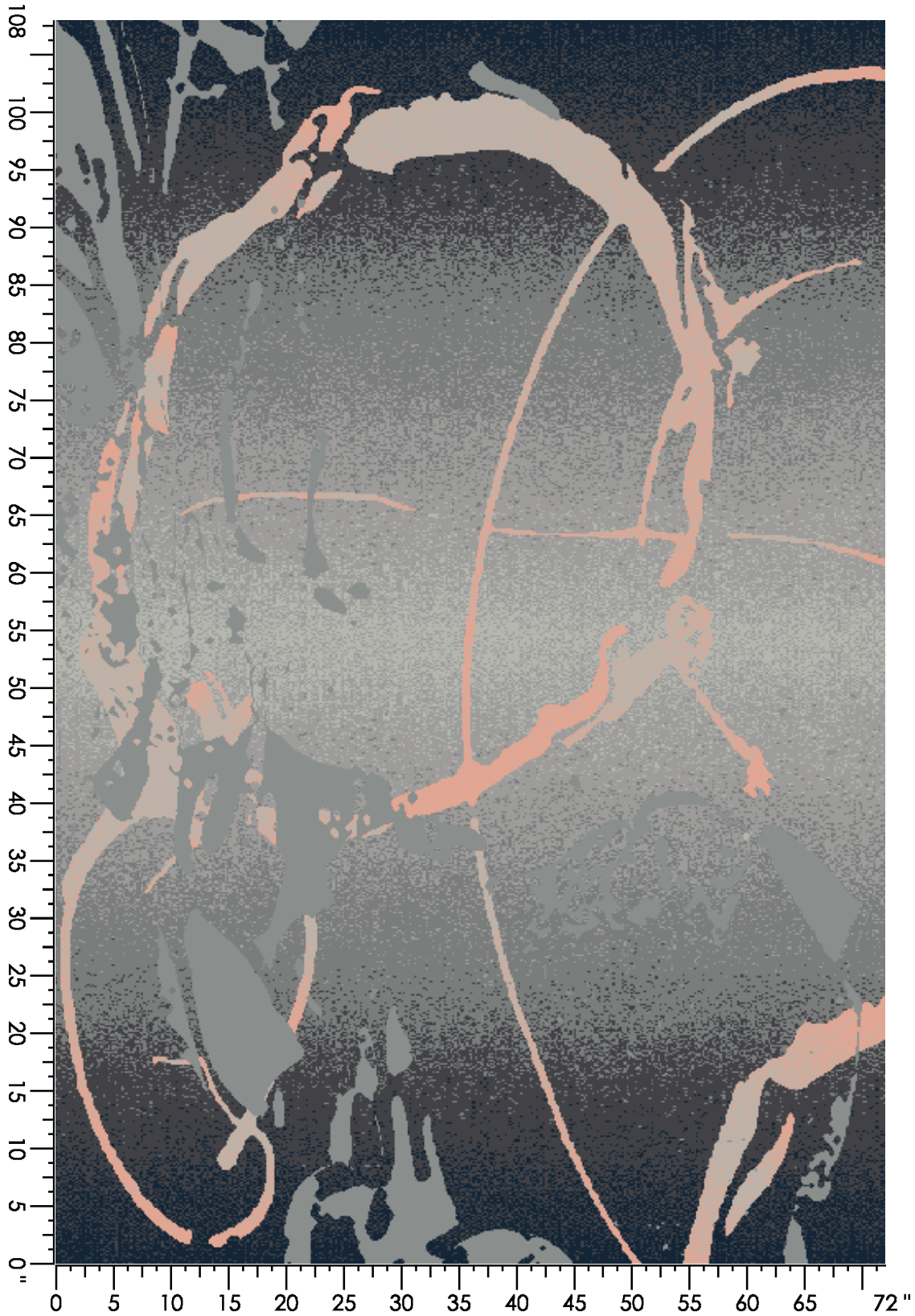
Design Number: AX1306-7 SG

Design Size: 72.00"W x 108.00"L

Repeat Type: NO SIDE
MATCH

1 repeat shown- not to scale

| | | | | | | |
|-------|--------|--------|--------|--------|-------|--------|
| 1 | 2 | 3 | 4 | 5 | 6 | 7 |
| A875 | D559 | C556 | C555 | B560 | F766 | B556 |
| 8.30% | 18.87% | 22.29% | 21.20% | 11.93% | 4.61% | 12.80% |



Style: D518 MO

Color: Blotted

Repeat Type: SIDE MATCH

Product Type: Dynamics



A

lx hosp yrns
X392



lx hosp yrns
8002



Style: D1007 MO

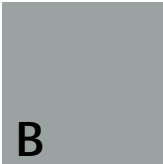
Color: **Blotted**

Repeat Type: SIDE MATCH

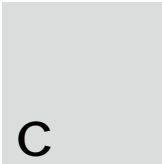
Product Type: Dynamics



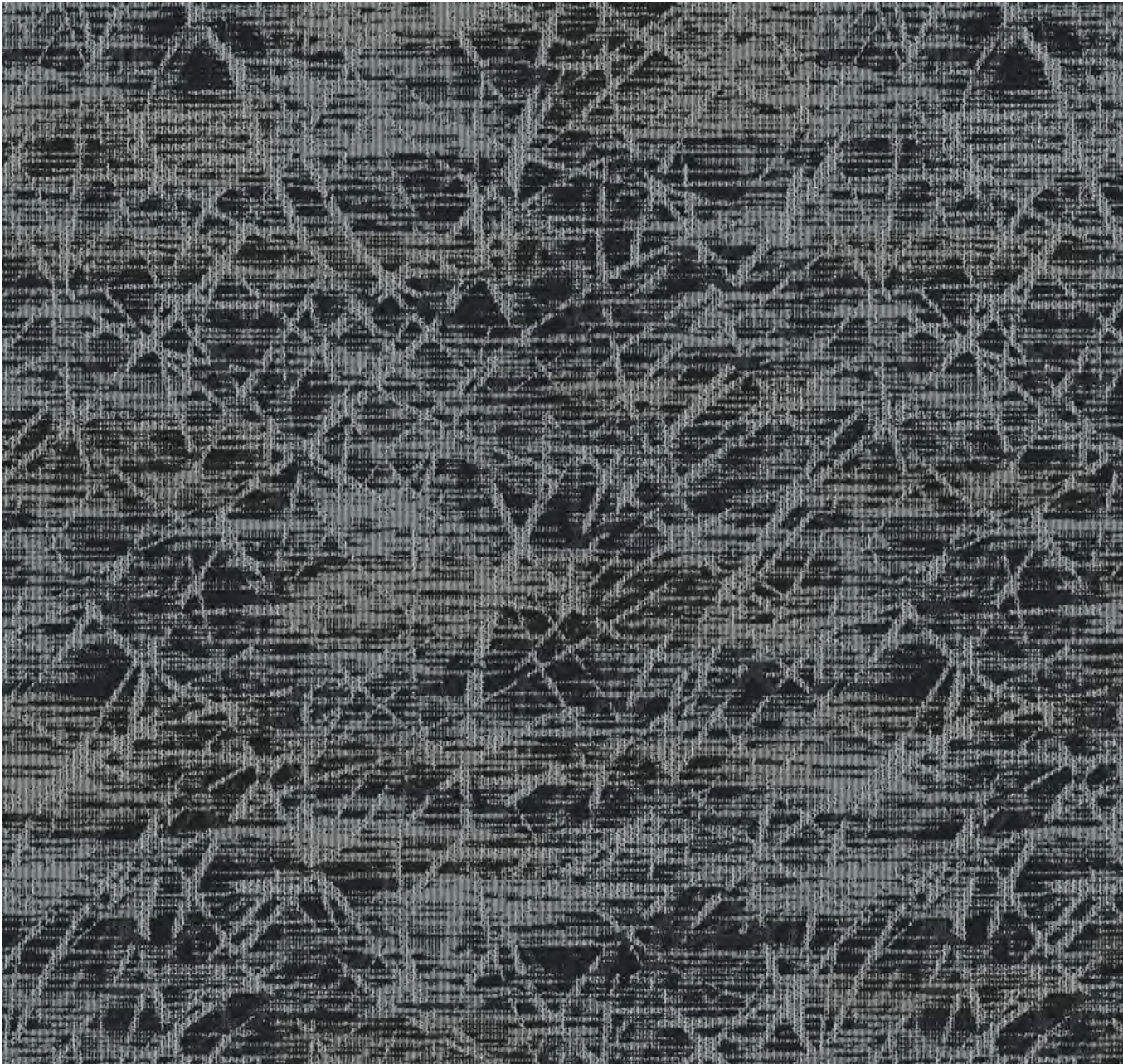
lx hosp yrns
8004



lx hosp yrns
8502



lx hosp yrns
8530



Style: D3740

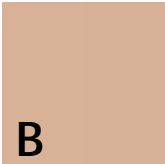
Color: Blotted

Repeat Type: SIDE MATCH

Product Type: Dynamics



lx hosp yrns
8002



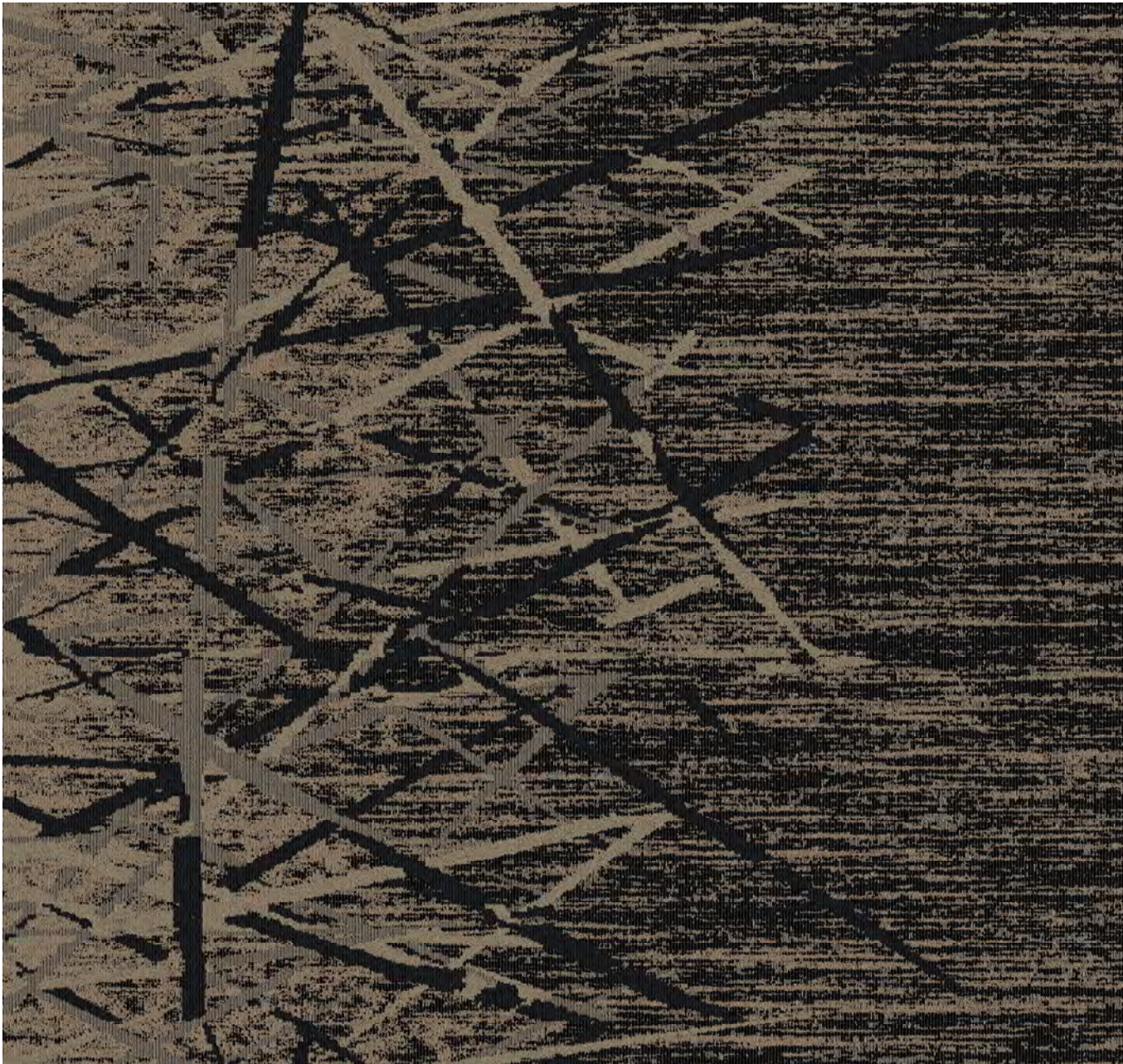
B
lx hosp yrns
3537



C
lx hosp yrns
8004



D
lx hosp yrns
3523



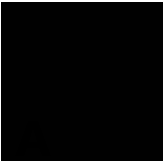
No printed material contained here-in may be reproduced without the written permission of Tarkett, Inc. Due to variations in monitors and light sources, we cannot guarantee that the colors in this image will be an exact match to your colors. Tarkett Hospitality 285 Kraft Dr. Dalton GA 30721

Style: D4607

REPEAT: 72"X78"

Repeat Type: SIDEMATCH

Product Type: Dynamics



lx hosp yrns
8002



B
lx hosp yrns
4512



C
lx hosp yrns
8510



D
lx hosp yrns
3523



No printed material contained here-in may be reproduced without the written permission of Tarkett, Inc. Due to variations in monitors and light sources, we cannot guarantee that the colors in this image will be an exact match to your colors. Tarkett Hospitality 285 Kraft Dr. Dalton GA 30721

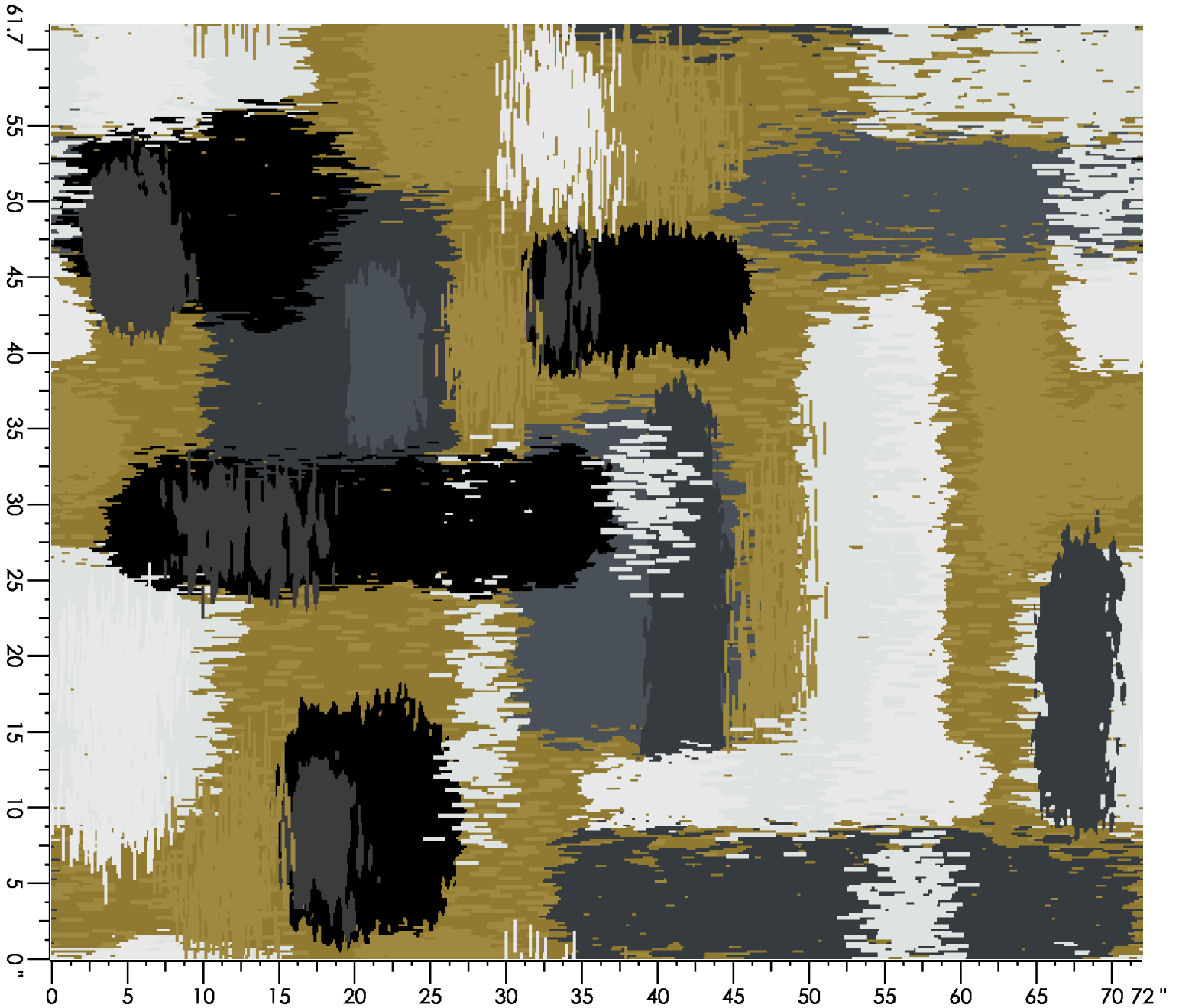
Design Number: IN80 MG

Design Size: 72.00"W x 61.71"L

Repeat Type: SIDE MATCH

1 repeat shown- not to scale

| | | | | | | | |
|---------|---------|---------|---------|---------|---------|---------|---------|
| 1 | 2 | 3 | 4 | 21 | 22 | 23 | 24 |
| A-8002C | B-8004C | C-4512C | D-8530C | A-8002L | B-8004L | C-4512L | D-8530L |
| 13.05% | 13.97% | 17.66% | 15.46% | 4.28% | 7.84% | 17.00% | 10.75% |



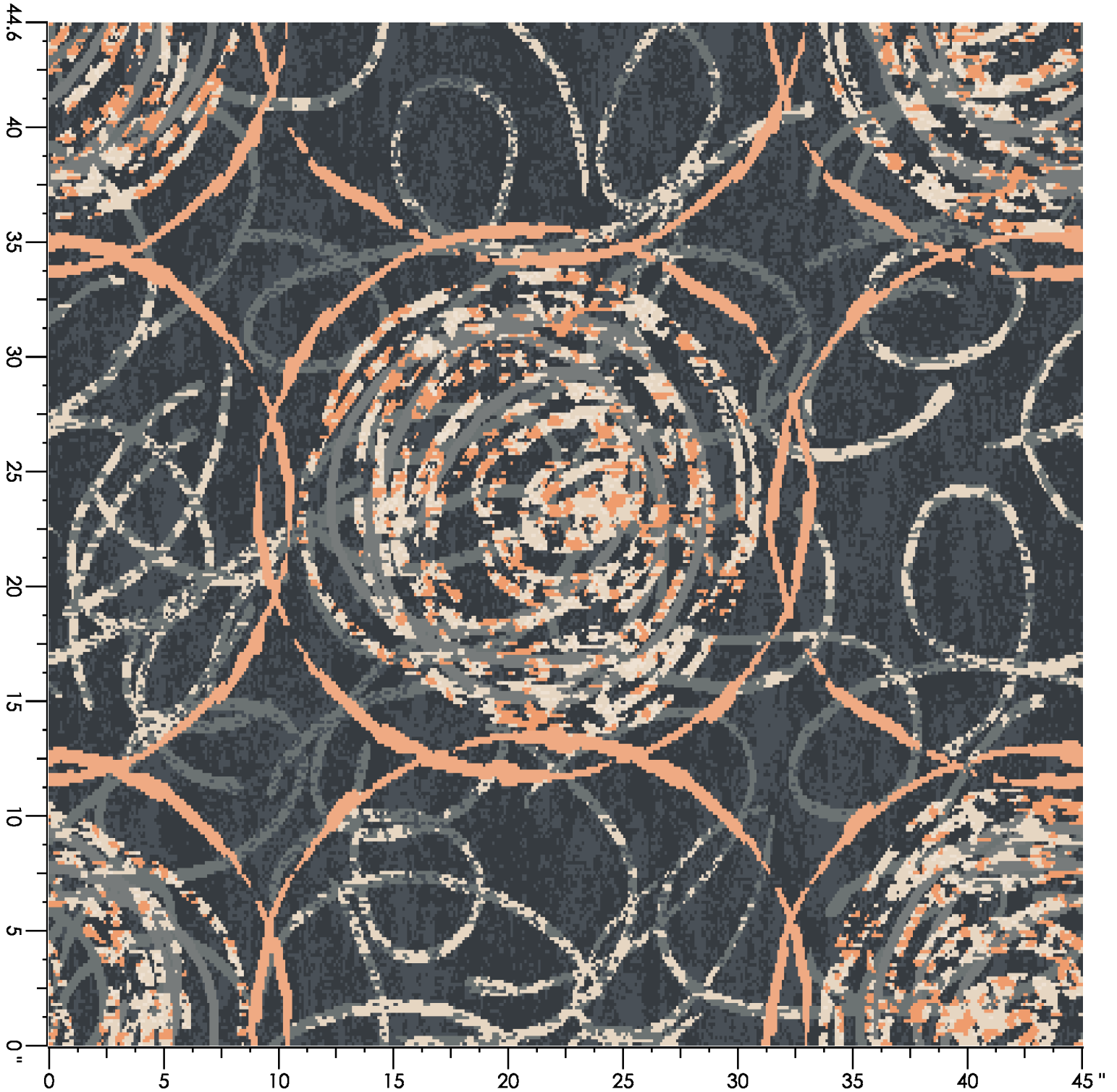
Design Number: IN402 MG

Design Size: 45.00"W x 44.57"L

Repeat Type: SIDE MATCH

1 repeat shown- not to scale

| | | | | | | | |
|---------|---------|---------|---------|---------|---------|---------|---------|
| 1 | 2 | 3 | 4 | 21 | 22 | 23 | 24 |
| A-3543C | B-2514C | C-8510C | D-8004C | A-3543L | B-2514L | C-8510L | D-8004L |
| 10.59% | 3.89% | 10.46% | 36.50% | 1.50% | 5.76% | 4.36% | 26.94% |



Design Number: IN2661 MO

Design Size: 180.00"W x 257.14"L

Repeat Type: SIDE MATCH

1 repeat shown- not to scale

| | | | | | | | |
|-----------|-----------|-----------|-----------|-----------|-----------|-----------|-----------|
| 1 | 2 | 3 | 4 | 21 | 22 | 23 | 24 |
| A - 8002C | B - 3537C | C - 3526C | D - X395C | A - 8002L | B - 3537L | C - 3526L | D - X395L |
| 9.64% | 9.40% | 14.55% | 10.00% | 18.05% | 13.90% | 14.95% | 9.52% |

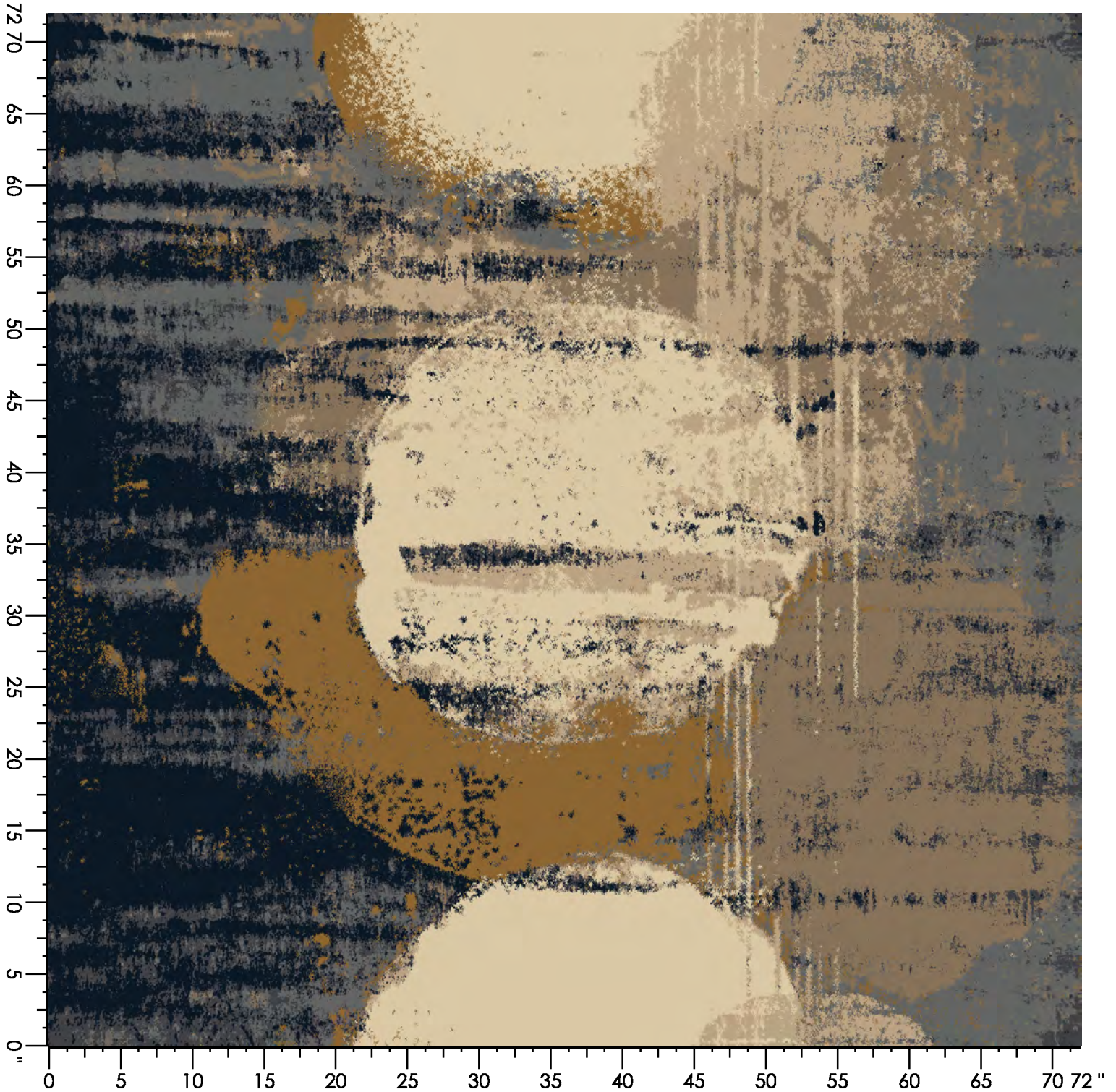


Design Number: INJ733 SG

Design Size: 72.00"W x 72.00"L

Repeat Type: NO SIDE MATCH - END ONLY **1 repeat shown- not to scale**

| | | | | | | |
|--------|--------|--------|-------|--------|--------|--------|
| 1 | 2 | 3 | 4 | 5 | 6 | 7 |
| A875 | D559 | C556 | M656 | K654 | H653 | D655 |
| 14.91% | 11.99% | 13.95% | 9.23% | 17.86% | 12.35% | 19.72% |



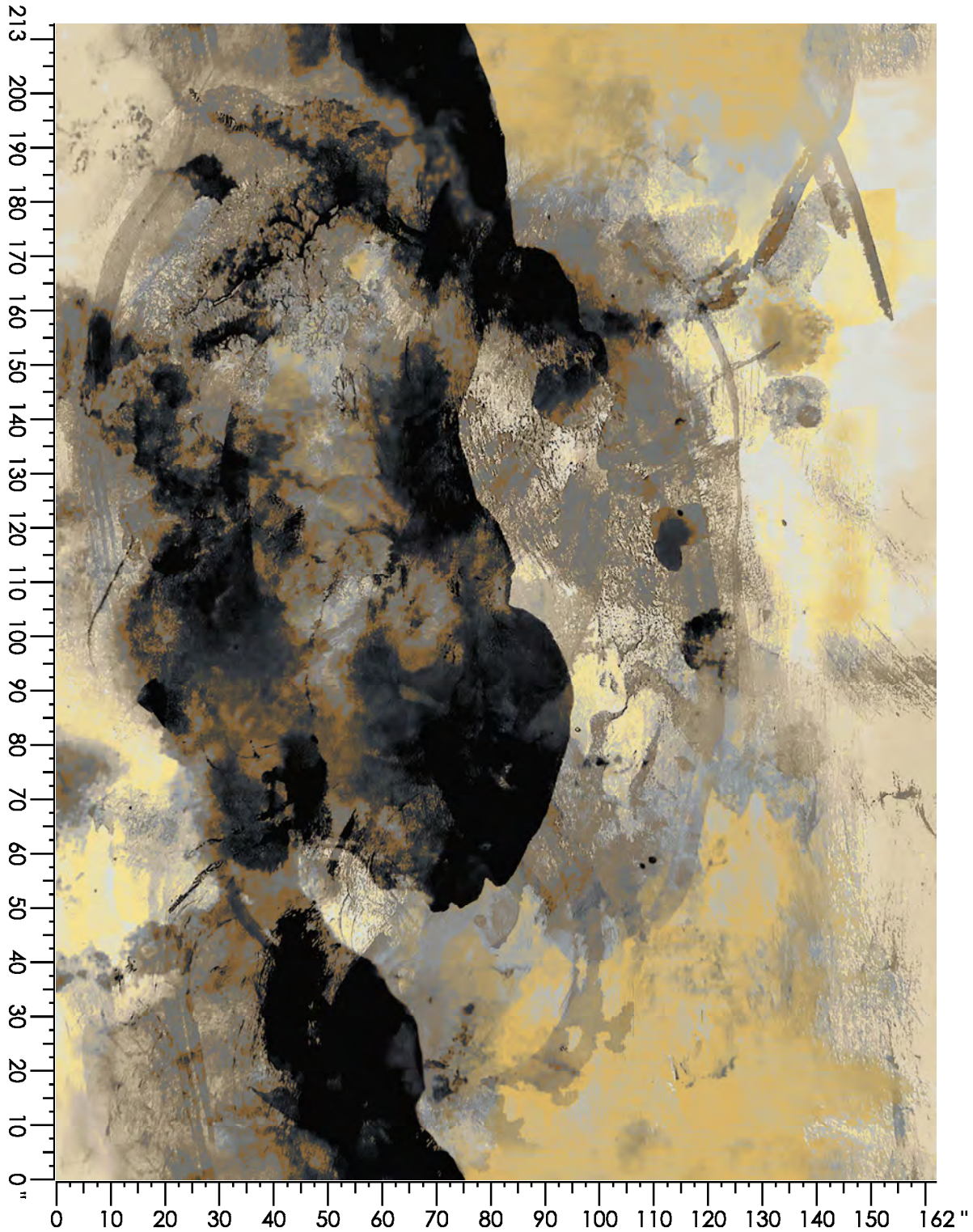
Design Number: INJ742 MK

Design Size: 162.00"W x 212.88"L

Repeat Type: NO SIDE MATCH

1 repeat shown- not to scale

| | | | | | | | | | |
|---------------------|---------------------|---------------------|---------------------|--------------------|--------------------|--------------------|--------------------|---------------------|---------------------|
| 1 A875 12.59% | 2 D559 10.29% | 3 M656 7.63% | 4 C556 9.83% | 5 K654 8.84% | 6 C555 4.15% | 7 B560 3.49% | 8 H653 7.71% | 9 D660 11.60% | 10 B556 4.78% |
| 11 H652 2.87% | 12 D655 7.37% | 13 A558 4.06% | 14 H660 4.79% | | | | | | |



Design Number: INJ743 MK

Design Size: 162.00"W x 212.88"L

Repeat Type: NON REPEATING RUG

1 repeat shown- not to scale

| | | | | | | | | | |
|--------|--------|--------|--------|-------|-------|-------|-------|-------|--------|
| 1 | 2 | 3 | 4 | 5 | 6 | 7 | 8 | 9 | 10 |
| A875 | D559 | C556 | K654 | C555 | B560 | H653 | D660 | B556 | A558 |
| 11.41% | 17.08% | 13.66% | 12.28% | 2.39% | 9.58% | 6.65% | 8.39% | 7.74% | 10.82% |



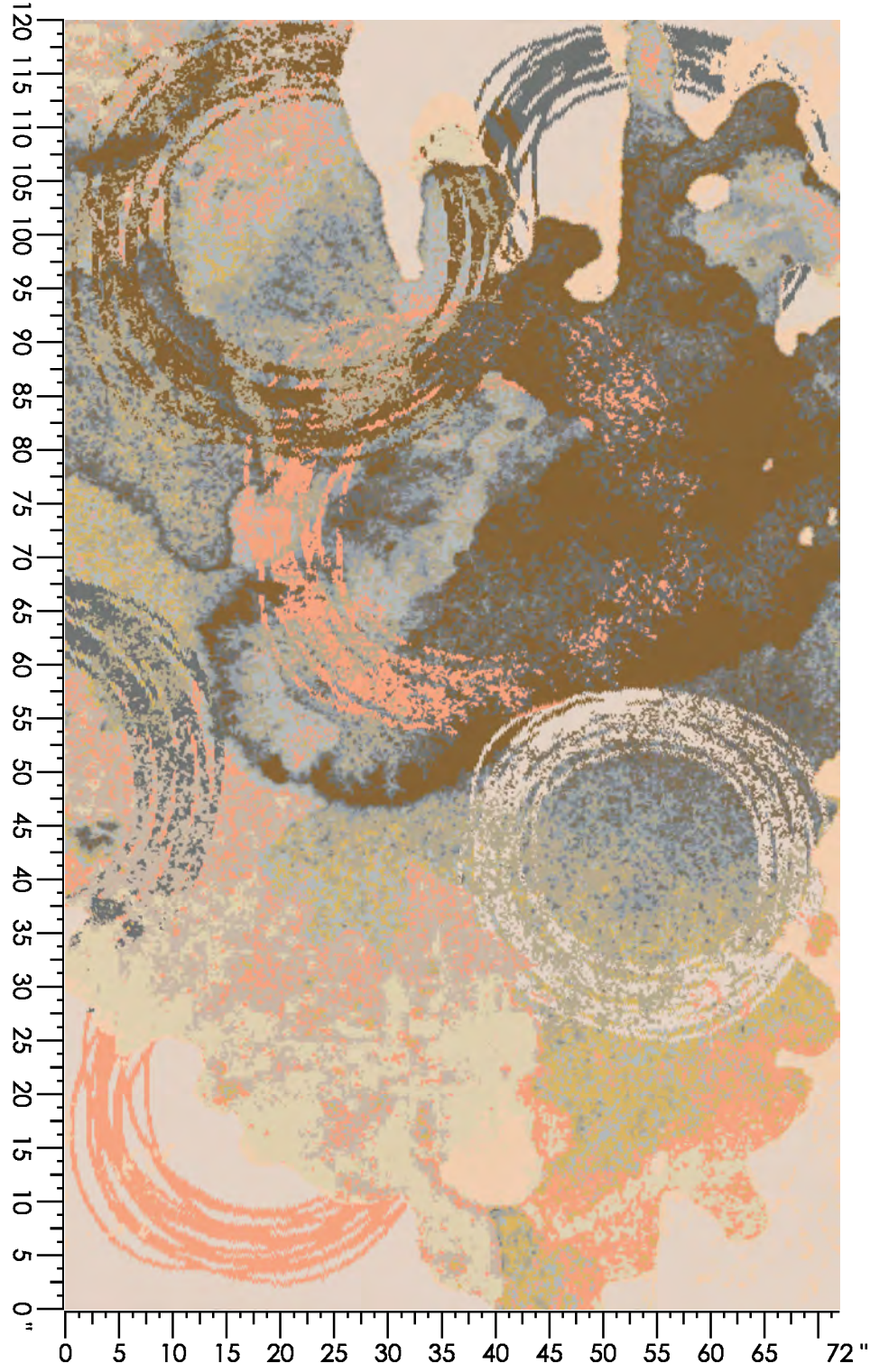
Design Number: INJ745 SG

Design Size: 72.00"W x 120.00"L

Repeat Type: AREA RUG

1 repeat shown- not to scale

| | | | | | | | | | |
|-------|--------|-------|--------|-------|-------|--------|-------|-------|--------|
| 1 | 2 | 3 | 4 | 5 | 6 | 7 | 8 | 9 | 10 |
| 0.00% | 14.82% | 8.50% | 4.13% | 4.22% | 4.98% | 11.29% | 4.21% | 6.09% | 10.04% |
| 11 | 12 | 13 | 14 | | | | | | |
| 7.18% | 6.85% | 3.88% | 13.81% | | | | | | |



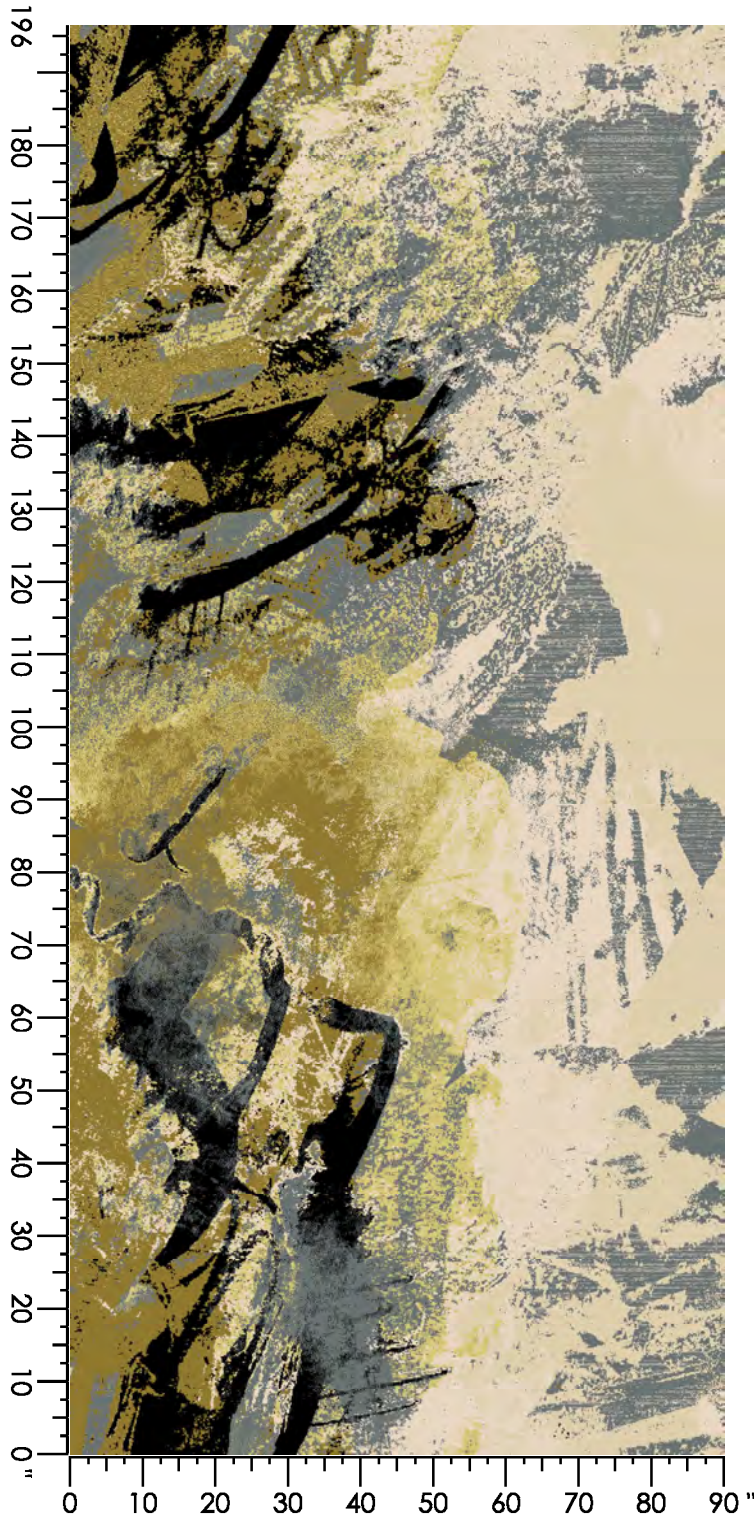
Design Number: L2409 LD

Design Size: 90.00"W x 196.50"L

Repeat Type: split END MATCH

1 repeat shown- not to scale

| | | | | | |
|--------|--------|--------|--------|--------|--------|
| 1 | 2 | 3 | 4 | 5 | 6 |
| 8002C | 8510C | 4512C | 3543C | 3507C | 3523C |
| 11.31% | 25.63% | 16.54% | 21.53% | 11.69% | 13.30% |



Design Number: LP2240 JB

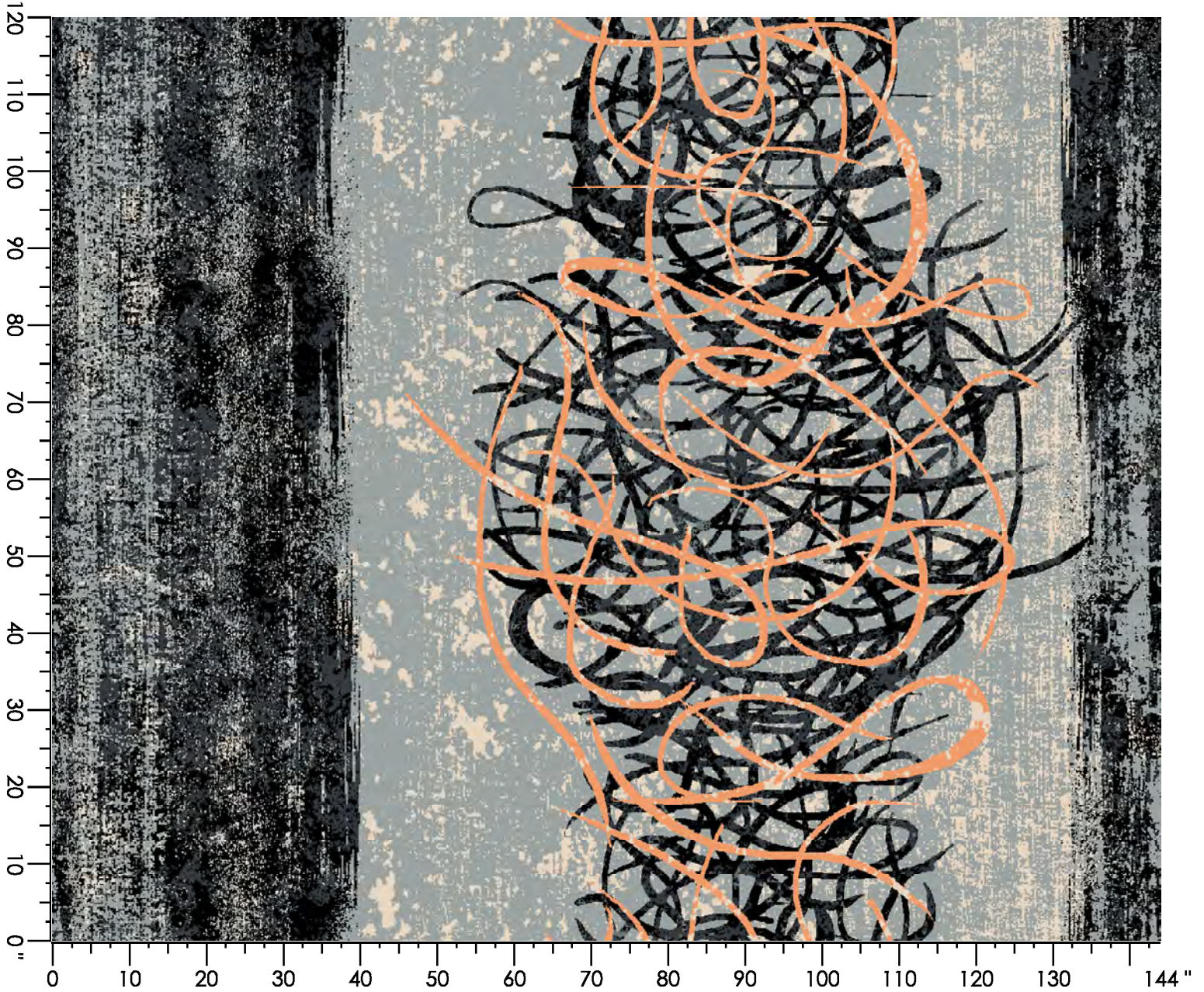
Design Size: 144.00"W x 120.00"L

Repeat Type: NO

SIDEMATCH

1 repeat shown- not to scale

| | | | | | | |
|-------|--------|-------|--------|-------|--------|--------|
| 1 | 2 | 3 | 4 | 5 | 6 | 7 |
| 3543C | 3543C | 2514C | 8502C | 8510C | 8004C | 8002C |
| 0.92% | 11.02% | 6.44% | 41.85% | 0.97% | 16.25% | 22.55% |



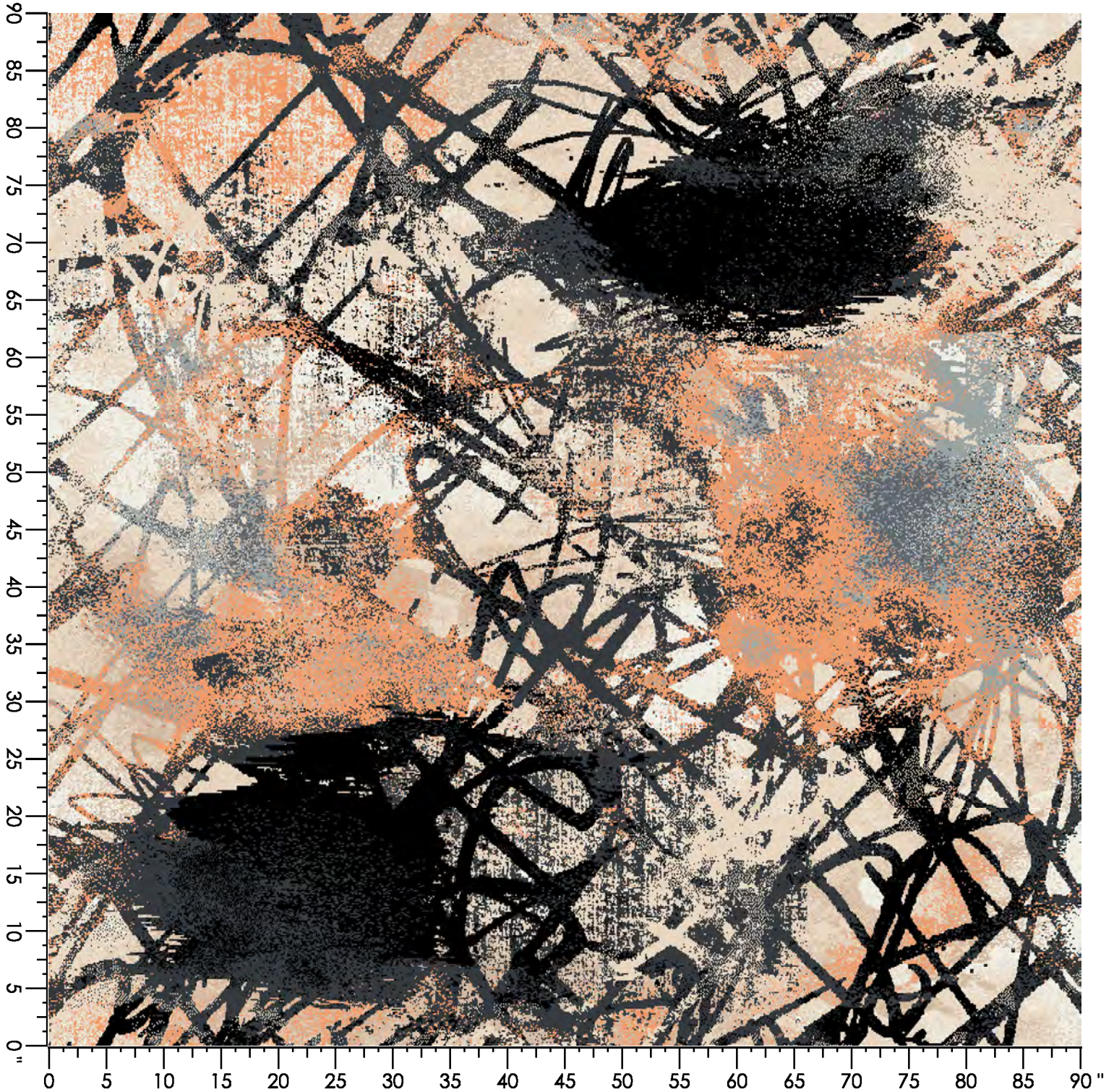
Design Number: LP2241 JB

Design Size: 90.00"W x 90.00"L

Repeat Type: SIDEMATCH

1 repeat shown- not to scale

| | | | | | | | |
|-------|-------|--------|--------|-------|--------|-------|--------|
| 1 | 2 | 3 | 4 | 5 | 6 | 7 | 8 |
| 8502C | 8537C | 8004C | 8002C | X395C | 3543C | 3537C | 2514C |
| 4.70% | 1.70% | 25.17% | 16.69% | 7.14% | 21.29% | 8.08% | 15.24% |



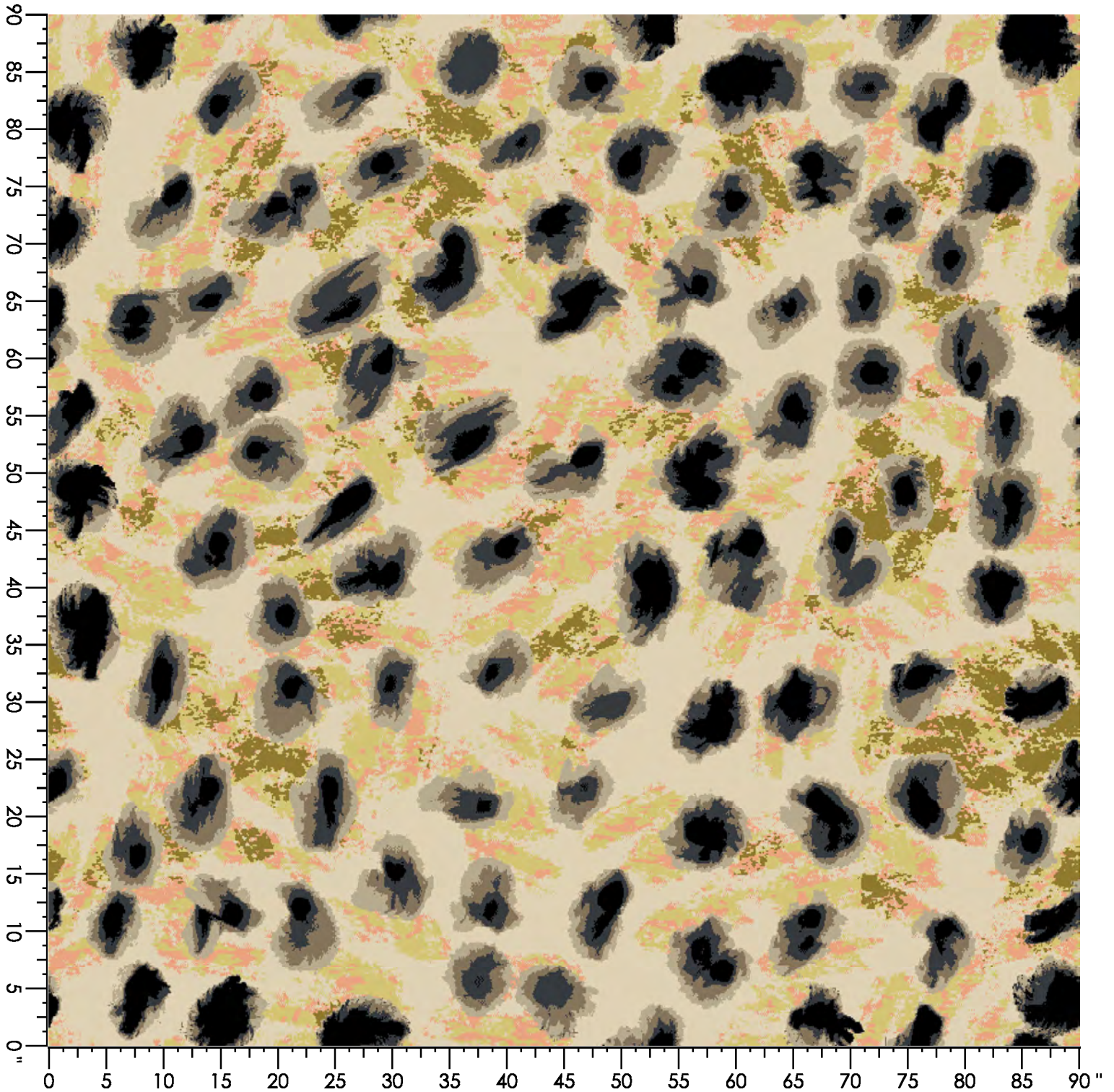
Design Number: LP2265

Design Size: 90.00"W x 90.00"L

Repeat Type: SM

1 repeat shown- not to scale

| 1 | 2 | 3 | 4 | 5 | 6 | 7 | 8 |
|--------|--------|-------|--------|-------|--------|-------|-------|
| 3523C | 3507C | 2514C | 3526C | 4512C | 8523C | 8004C | 8002C |
| 33.15% | 14.52% | 8.13% | 11.47% | 4.44% | 10.74% | 9.86% | 7.68% |



Design Number: TR001

Design Size: 180.00"W x 228.00"L

Repeat Type:

1 repeat shown- not to scale

| | | | | | | | | | |
|----------------------|----------------------|----------------------|----------------------|----------------------|---------------------|---------------------|----------------------|---------------------|----------------------|
| 1 8502C 14.58% | 2 3537C 17.09% | 3 2514C 2.45% | 4 8523C 6.08% | 5 8510C 3.83% | 6 8537C 1.48% | 7 8002C 0.27% | 8 8004C 20.49% | 9 3543C 4.59% | 22 3537L 4.19% |
| 23 2514L 5.57% | 24 8523L 6.29% | 25 8502L 4.43% | 29 3543L 3.24% | 30 X392L 5.42% | | | | | |

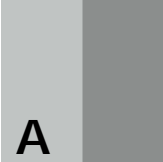


Style: TR007D TRANSCEND VII MO

Color: Blotted

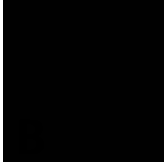
Repeat Type: SIDE MATCH

Product Type: Dynamics



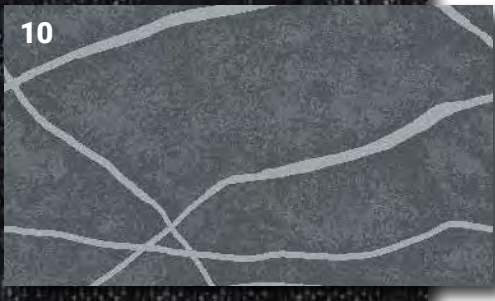
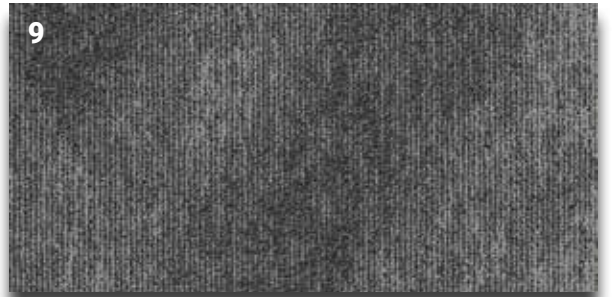
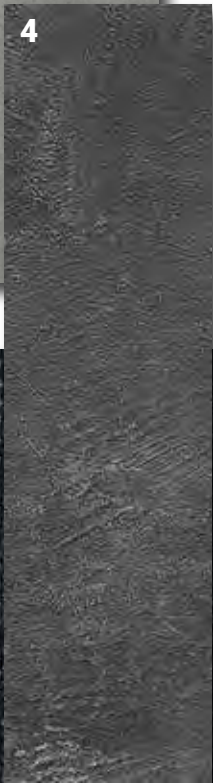
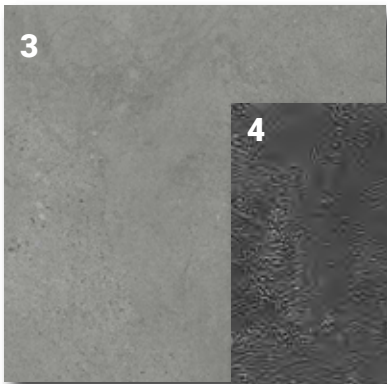
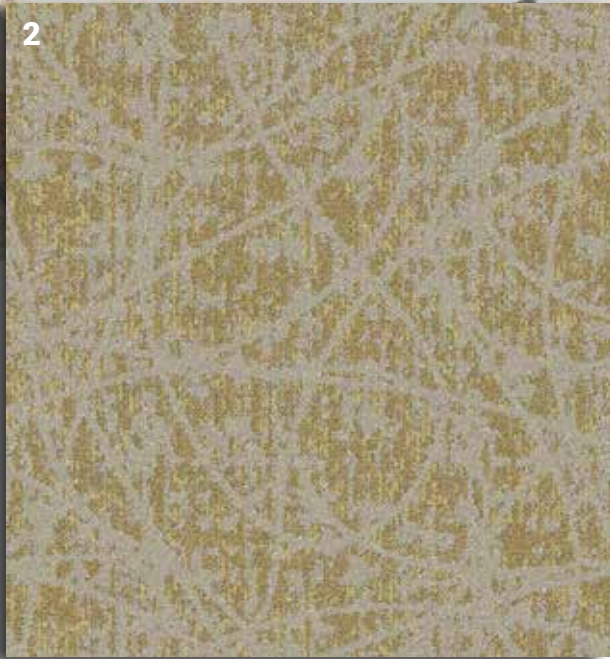
A

lx hosp yrns
X392



lx hosp yrns
8002





- 1. Custom AX - AX1278-7-LD
- 2. RL Stacy Garcia- Fluid Lines 105
- 3. LVT - iD Latitude Stone 7242
- 4. LVT - Contour Nikko Modern Stone 620
- 5. Carpet Tile - Substance-Sovereign
- 6. RL Tufted Broadloom -965 Pure 110
- 7. Millwork - Beige
- 8. Millwork- Bedrock
- 9. Carpet Tile - Saveur - Ingress
- 10. RL Tufted Broadloom - Divergence IV IN147-420