

Hospitality Carpet Tile



Tufted

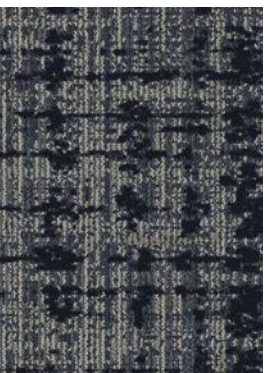
CARPET TILE

How do we take our product success stories and continue to innovate them so that our clients can offer the highest quality experiences?



By taking inspiration from six of our top-selling broadloom carpets— **Alchemy**, **Candid**, **Divergence**, **Fluid Lines**, **Saltmarsh**, and **Stellar** —and reimagining them in modular carpet tile format, with an emphasis on design capability, utilizing superior yarn, and offering advanced installation and backing systems.







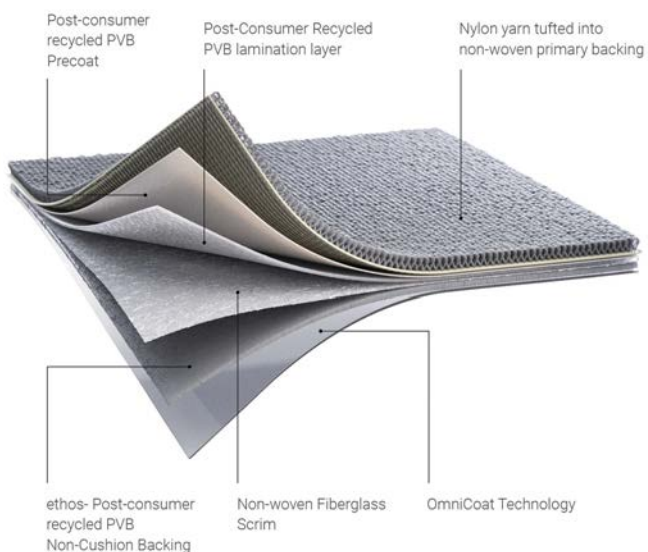
About Tufted Carpet Tile

Modular carpet tile format allows you to design curated layouts that fit your spaces perfectly.

In addition to the luxurious feel of soft carpet underfoot, the versatility of modular carpet tiles provides numerous benefits:

- Easier to install than traditional carpet and no long-term commitment.
- Unmatched flexibility & operational ease: Carpet tile can be quickly pulled up for a design refresh, replacement, or an easy repair.
- Carpet tile makes it easier to inset soft surface within a hard surface floor without transition strips.
- Available in varying sizes in two different performance types: ethos® Modular with Omniccoat Technology® and Flex-Aire™ Modular®.

Advanced Backing Systems



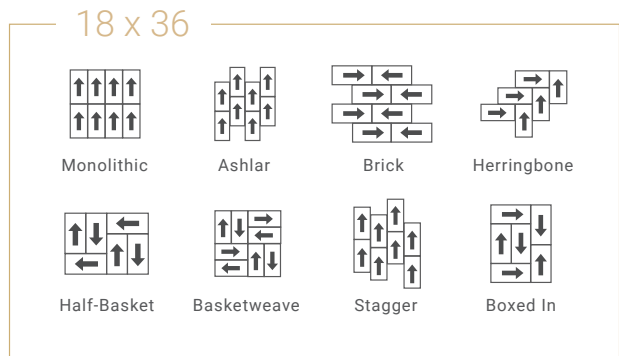
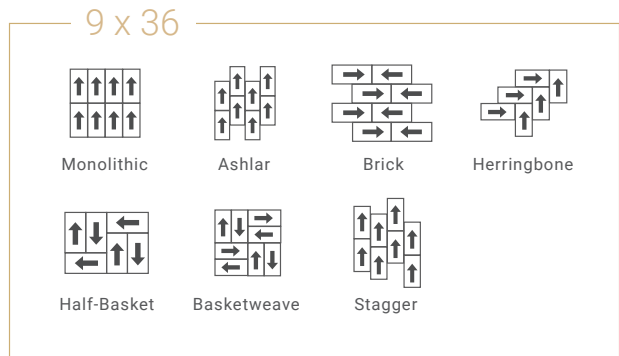
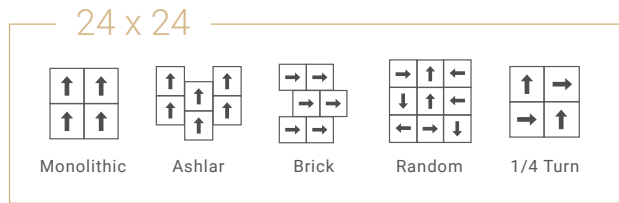
ethos® Modular with Omniccoat Technology™

- An industry first: unaffected by moisture & pH
- TarkettTape™ eliminates pH, RH & MVER testing
- No other product installs over old adhesive better
- SCS Global Certified - NSF-140 Platinum
- Cradle to Cradle Certified™ Silver v3.1
- 48% - 64% overall recycled content
- 28% -38% post-consumer content
- 100% recyclable through ReStart

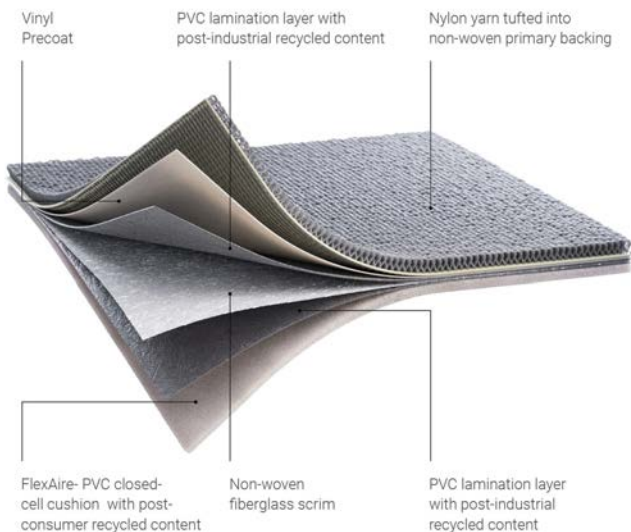
Modular Carpet Tile Installation Options

Combining installation versatility with exceptional creativity and easy custom colorization, the ability to craft distinctive finished floors with tufted carpet tile from Tarkett Hospitality is unmatched.

Ideal for transition-less pairing with hard surface products, modular carpet tile can be installed in a multitude of eye-catching patterns to enhance visual interest.



Select from two sustainable backing systems, ethos® Modular with Omniccoat Technology™ and Flex-Aire™ Cushion Modular, to better suit your specific performance needs. Along with superior TarkettTAPE® for faster, simpler results, your installation has never been easier or more thoughtful for the planet.



Flex-Aire™ Cushion Modular

- Offers more comfort underfoot + rollability
- Improves acoustical properties, IIC rating 68
- SCS Global Certified - NSF 140 Gold
- 22% - 28% overall recycled content
- 5% - 6% post-consumer content
- 100% recyclable through ReStart
- Direct Glue or TarkettTAPE™

Gold Ore

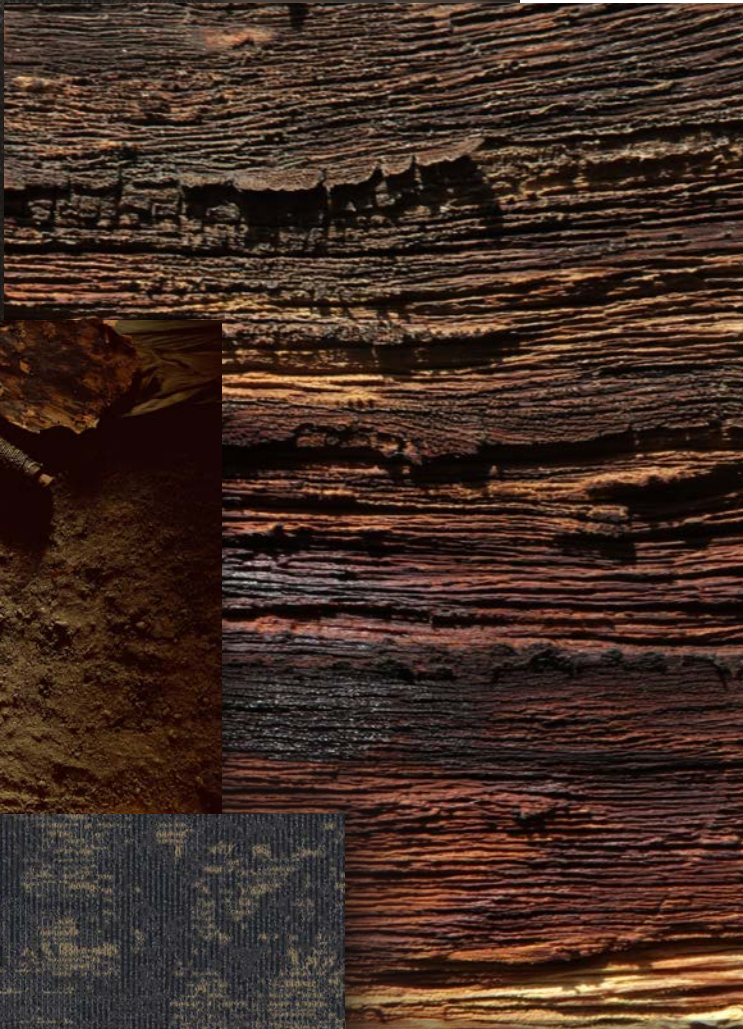


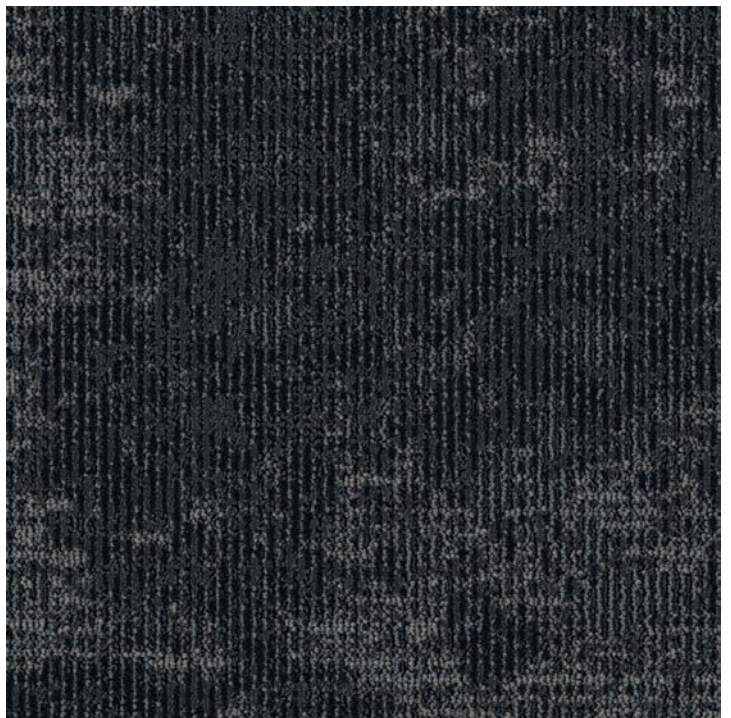
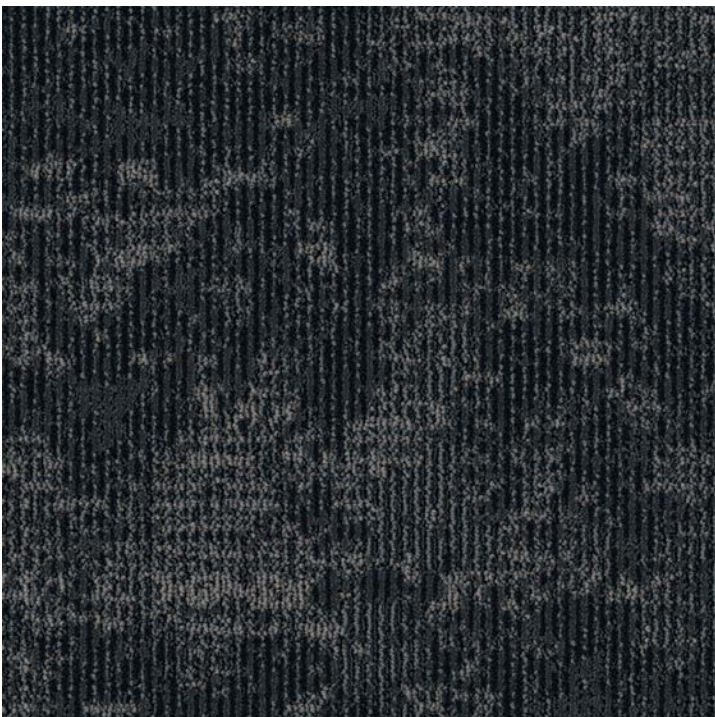
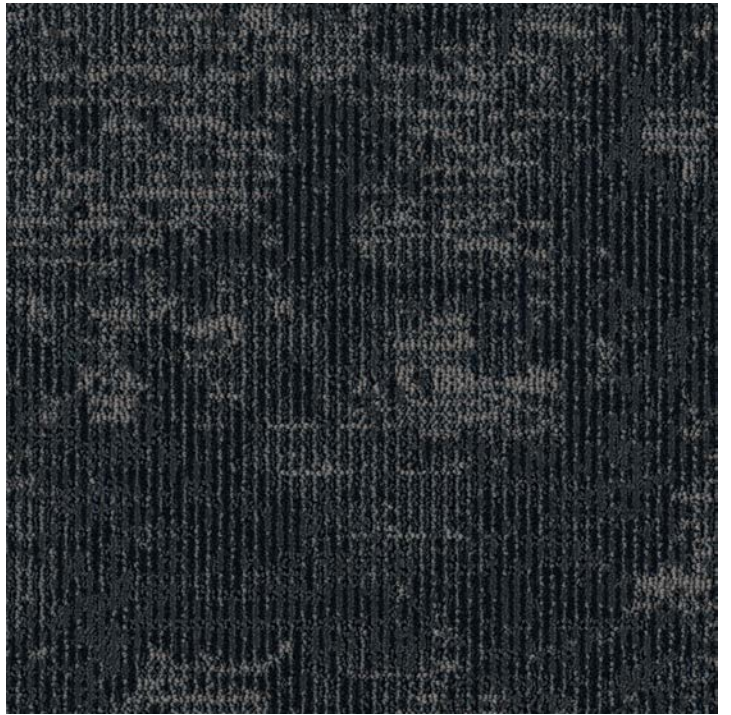
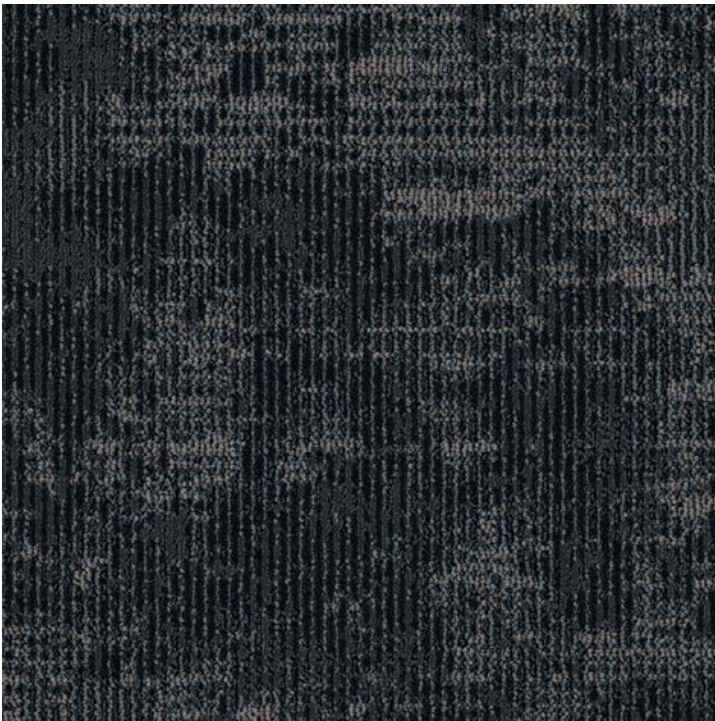
01

Inspired by the Alchemy Collection

A seemingly mystical process of transformation and creation, alchemy is the practice of turning something ordinary into something extraordinary.

Gold Ore Tile captures deep, earthy neutrals that draw visual inspiration from time-honored formations and patterns found in the natural world around us. With the ability to turn ordinary spaces into reworked retreats that are both inviting and grounding, these styles can easily become the key ingredients to a design refresh with extraordinary results.





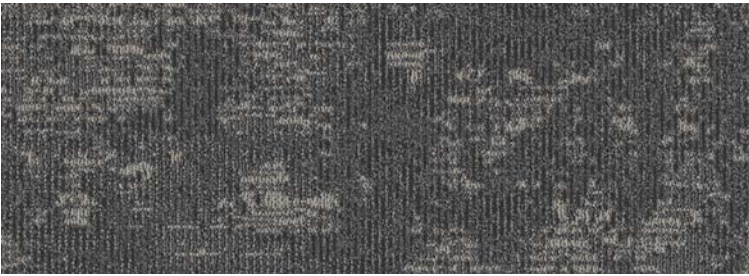
W2003 | Color 898 Steel | 24" x 24" | Vertical Ashlar

Gold Ore - W2003 COLORWAYS



148 Pyrite

- A 8501
- B 7517
- C 8504



168 Pewter

- A 8520
- B X391
- C 8517



188 Charcoal

- A 7021
- B 8518
- C 8517



898 Steel

- A X403
- B 5509
- C 8537

Technical Detail

Product Type:
Dynamics Tile

Tile Size:
24" x 24" | 9" x 36" | 18" x 36"

Primary Backing:
Woven Polypropylene

Secondary Backing:
Ethos with Omnicoat Backing

Construction:
Multi-Level Cut/Loop

Fiber Content:
CF Lextron Enviro-Green Nylon

Tufted Weight:
22 oz. | sq. yd.

Total Weight:
100 oz.

Finished Pile Thickness:
0.313"

Suggested Installation:

<p>24x24 Ashlar Random 1/4 Turn</p>	<p>18x36 / 9x36 Ashlar Herringbone Basketweave Half Basket Boxed In Stagger</p>
--	--





Candere

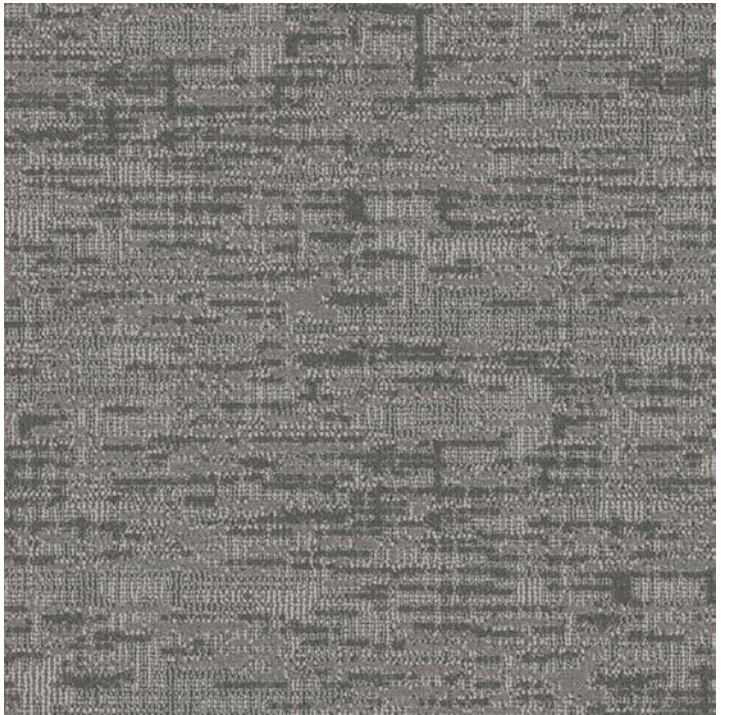
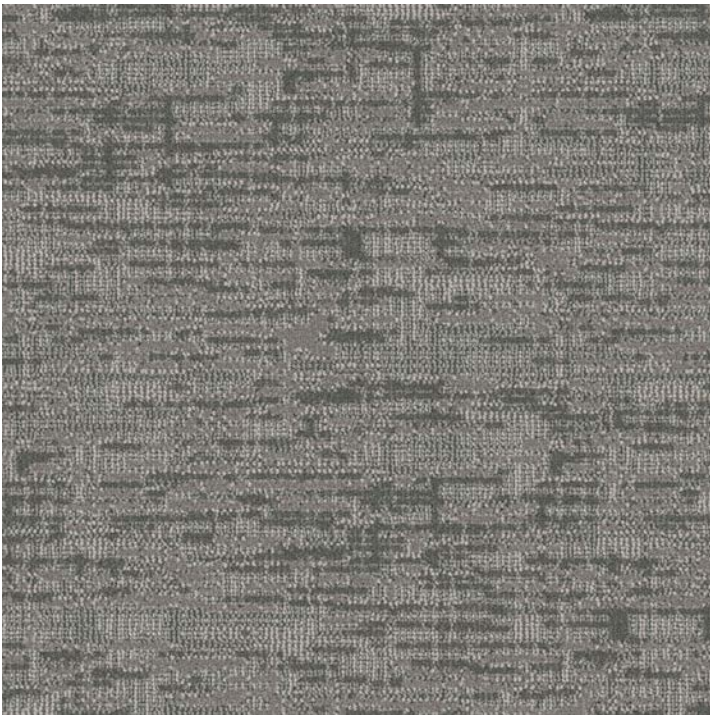
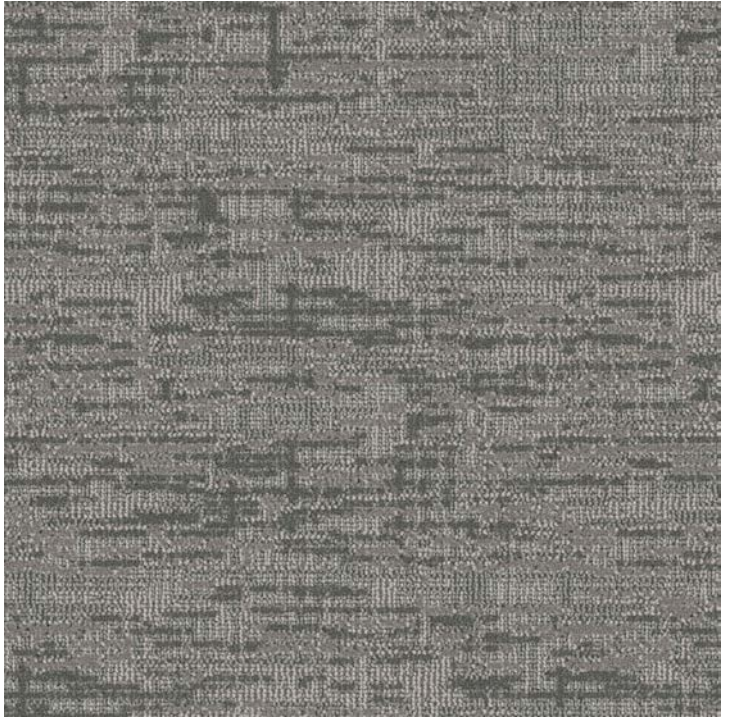
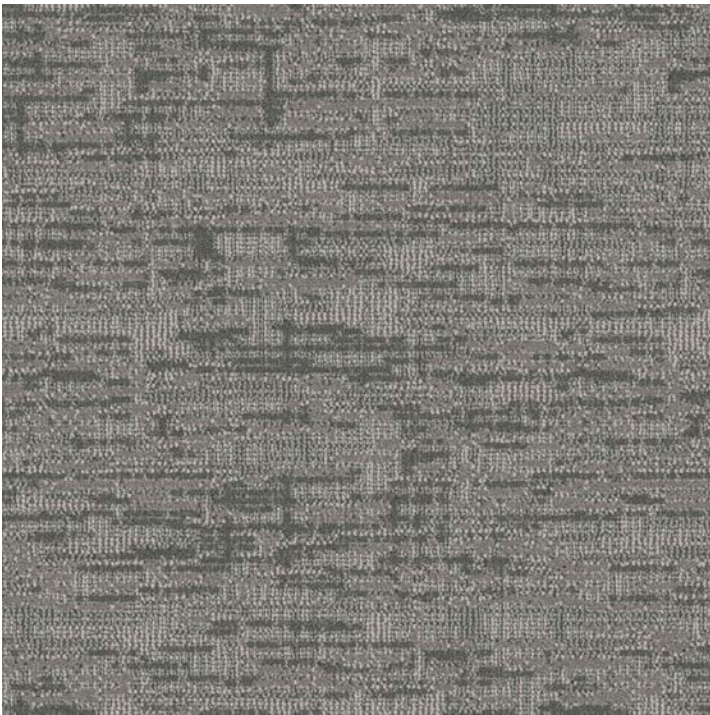
Inspired by the Candid Collection

When taking a direct, sincere approach to design, beautiful texture will deliver a look that's as engaging as it is consistent, eye-catching yet appropriately straight-forward.

Candere Tile presents a dynamic, perpendicular stitch pattern in gorgeous, pleasing tones that allows for a sense of rhythm and intrigue. There are no tricks on display here: Simply neutral and bold tones of texture to create subtle complexity and depth for engaging spaces.

Candere Silver | Vertical Ashlar | 24" x 24"

02



W1003 | Color 180 Silver | 24" x 24" | Vertical Ashlar

Candere - W1003 COLORWAYS



110 Sateen

A 1507

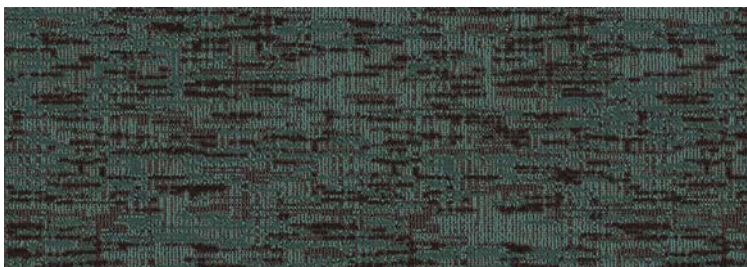
B 8501



180 Silver

A 8520

B 8501



230 Aquamarine

A 7510

B 4016



420 Gold

A 3005

B 7515

Technical Detail

Product Type:

Dynamics Tile

Tile Size:

24" x 24" | 9" x 36" | 18" x 36"

Primary Backing:

Woven Polypropylene

Secondary Backing:

Ethos with Omnicoat Backing

Construction:

Multi-Level Cut/Loop

Fiber Content:

CF Lextron Enviro-Green Nylon

Tufted Weight:

22 oz. | sq. yd.

Total Weight:

100 oz.

Finished Pile Thickness:

0.239"

Suggested Installation:

24x24

Ashlar
Random
1/4 Turn

18x36 / 9x36

Ashlar
Herringbone
Basketweave
Half Basket
Boxed In
Stagger



Deviate Ocean | Vertical Ashlar | 9" x 36"

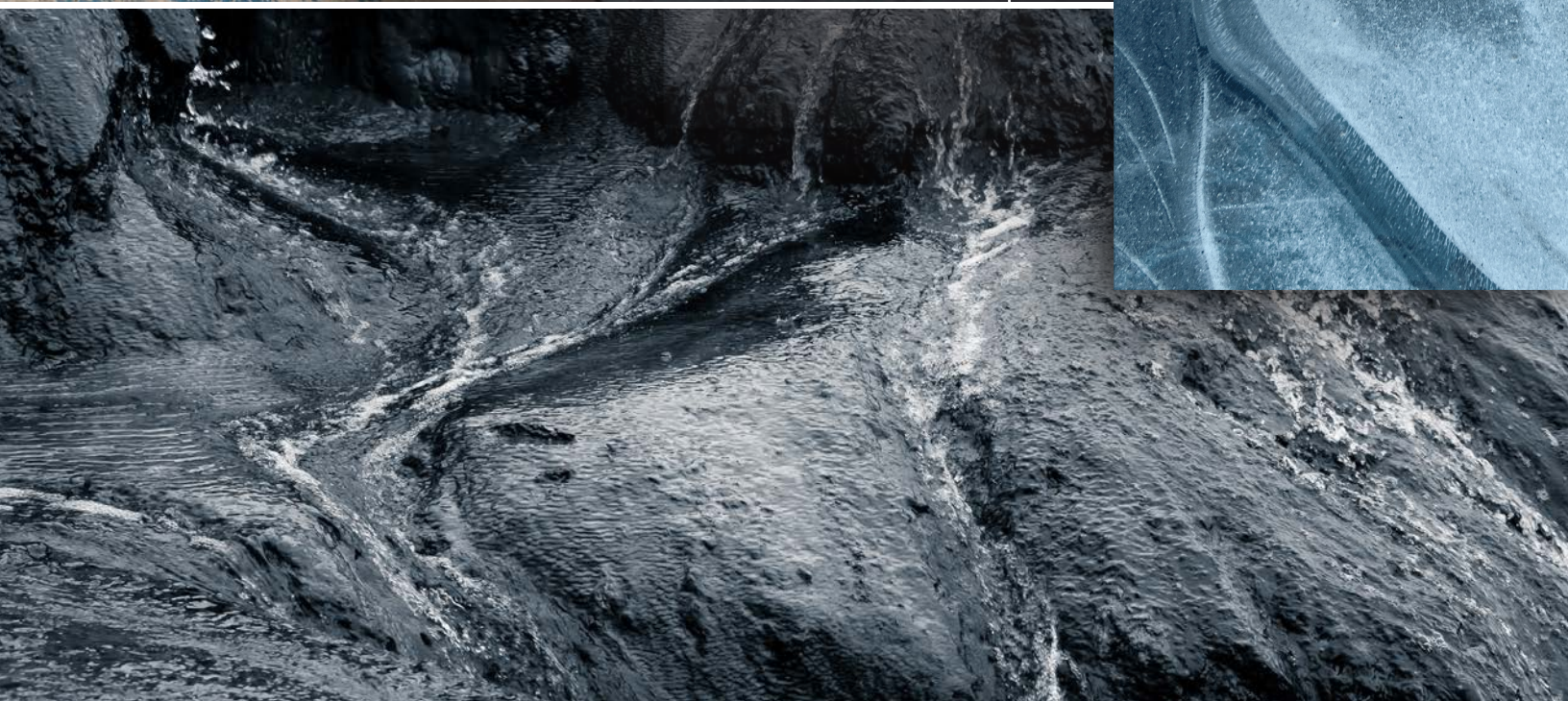
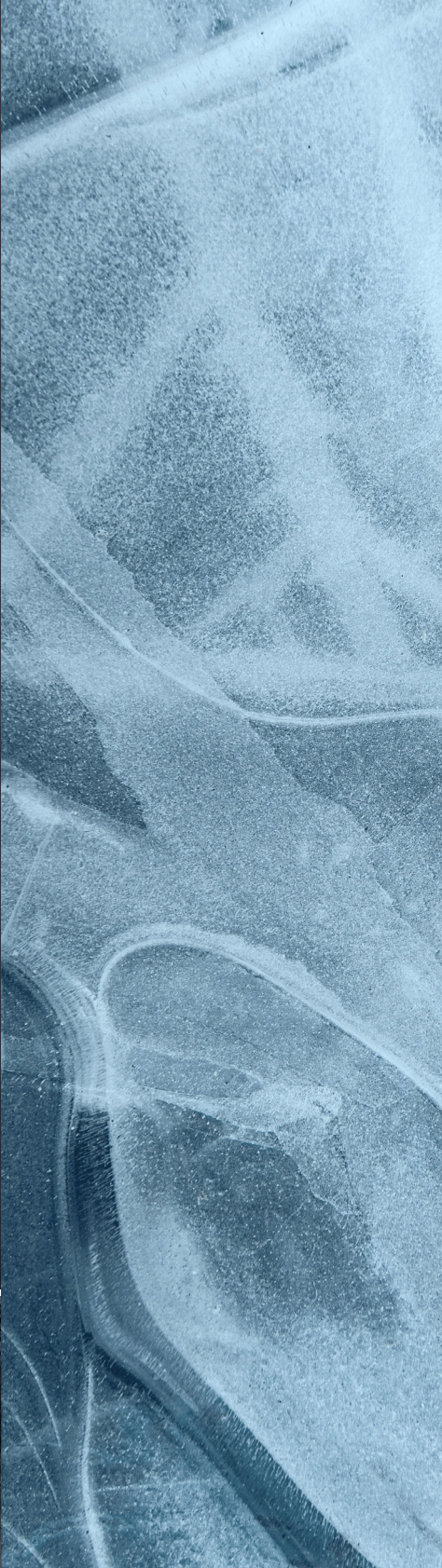
03

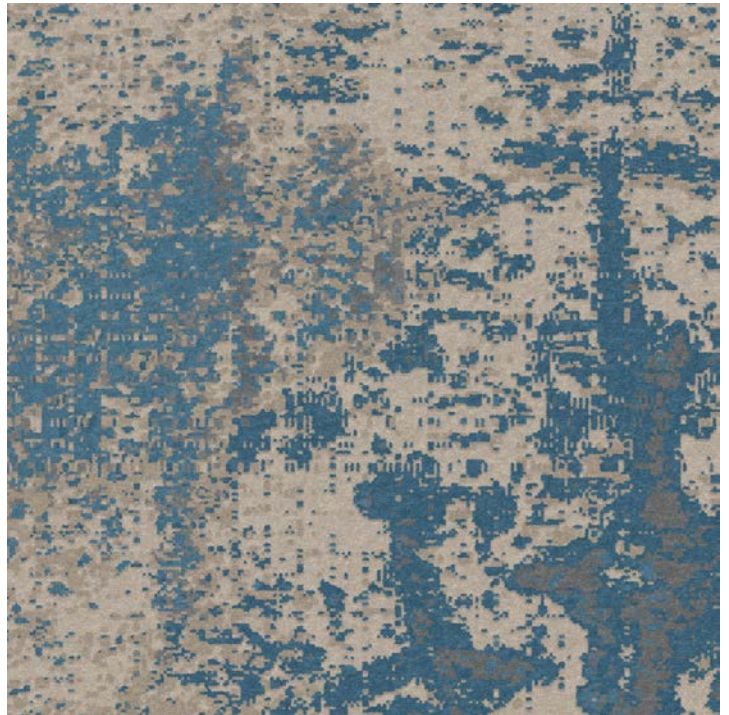
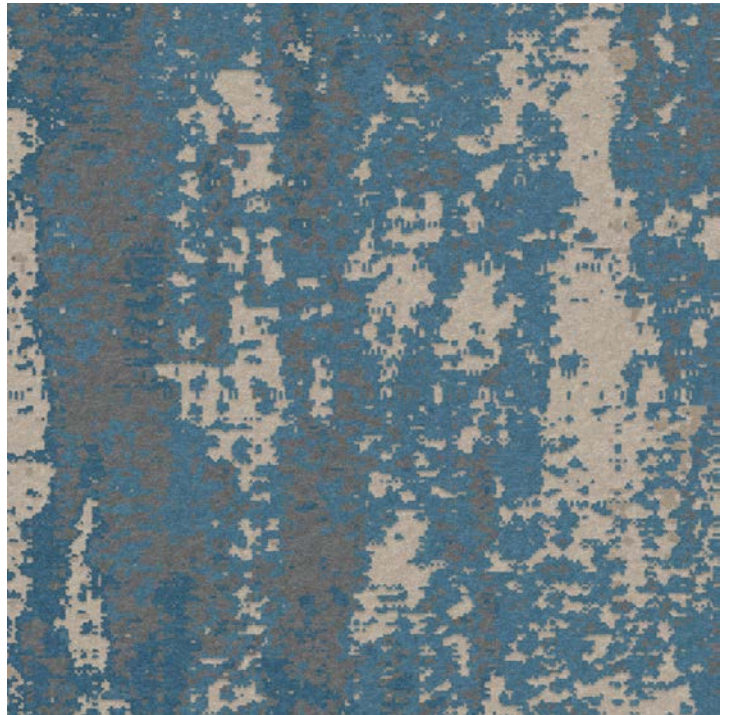
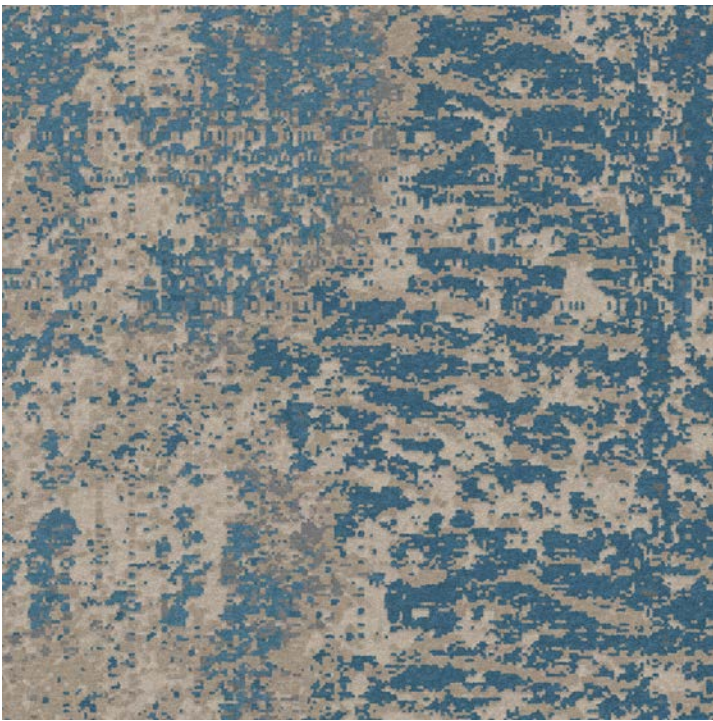
Inspired by the Divergence Collection

Showcasing soft lines that conjure scenes like sea foam left behind on a coastline stroll or the cross-section of rock along a mountain hike, **Deviate Tile** allows you to create stunning pathways that elevate the overall experience. The soothing foundation of greys, greige, beige, and saturated accents creates palettes that allows you to break from the ordinary and dive into exciting depths.



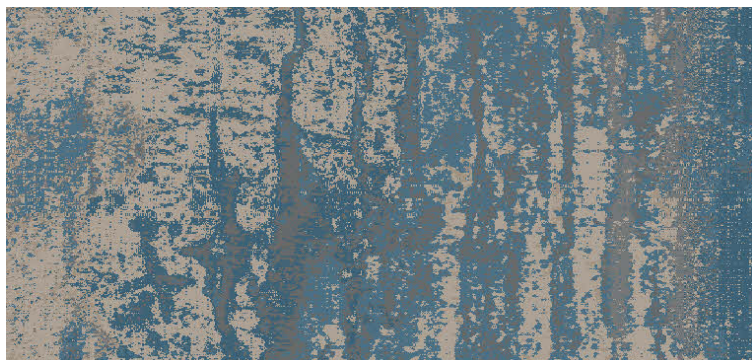
Deviate





W2005 | Color 618 Ocean | 24" x 24" | Vertical Ashlar

Deviate - w2005 COLORWAYS



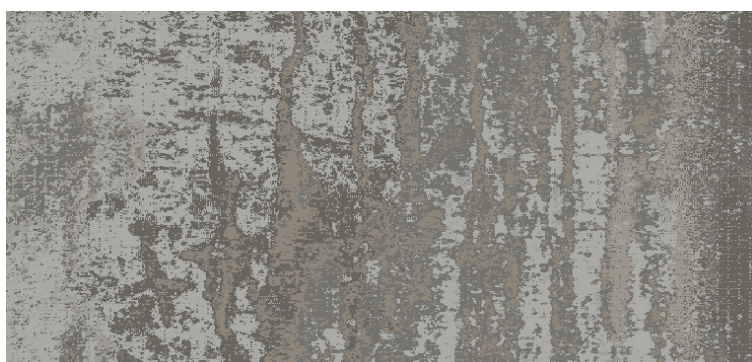
618 Ocean

- A 7501
- B 5515
- C 8531



868 Stone

- A 8533
- B 8529
- C 8531



881 Pebble

- A 8533
- B 8503
- C 3510

Technical Detail

Product Type:

Intrepid Tile

Tile Size:

24" x 24" | 9" x 36" | 18" x 36"

Primary Backing:

Woven Polypropylene

Secondary Backing:

Ethos with Omnicoat Backing

Construction:

Multi-Level Cut/Loop

Fiber Content:

CF Lextron Enviro-Green Nylon

Tufted Weight:

26 oz. | sq. yd.

Total Weight:

104 oz.

Finished Pile Thickness:

0.218"

Suggested Installation:

24x24

Monolithic
Ashlar
Brick
Random
1/4 Turn

18x36 / 9x36

Monolithic
Ashlar
Herringbone
Basketweave
Half Basket
Boxed In
Brick
Stagger

Inspired by the Fluid Lines Collection

Creating an intriguing sense of movement, Fluid Lines holds a captivating composition of faint organic linework looping through the surface. Designed as a complement to the Blend broadloom collection, this Stacy Garcia line is the perfect balance of pattern and texture.

Fluctuate Tile uses the same unrestrained flowing lines overlaid on top of directional texture for a balanced visual juxtaposition. Although the fast pace of the modern world can prevent extended moments of calm, there's something comforting about design that reinforces the power of harnessing unpredictable movement.



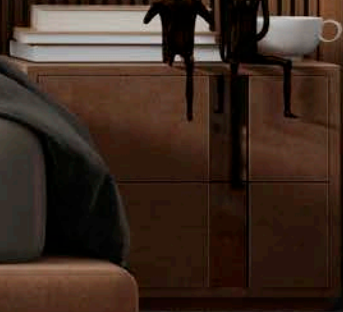
BLUE LABEL

Fluctuate Smoke | Vertical Ashlar | 18" x 36"

Fluctuate



04





SG001 | Color 818 Smoke | 24" x 24" | Vertical Ashlar

Fluctuate - SG001 COLORWAYS



118 Greige

A	X400
B	8520
C	8501



122 Earth

A	X333
B	8536
C	7506



818 Smoke

A	X392
B	8519
C	X391



882 Moss

A	X403
B	8527
C	4511

Technical Detail

Product Type:
Dynamics Tile

Tile Size:
24" x 24" | 9" x 36" | 18" x 36"

Primary Backing:
Woven Polypropylene

Secondary Backing:
Ethos with Omnicoat Backing

Construction:
Multi-Level Cut/Loop

Fiber Content:
CF Lextron Enviro-Green Nylon

Tufted Weight:
22 oz. | sq. yd.

Total Weight:
100 oz.

Finished Pile Thickness:
0.331"

Suggested Installation:

24x24
Ashlar
Random
1/4 Turn

18x36 / 9x36
Ashlar
Herringbone
Basketweave
Half Basket
Boxed In
Stagger

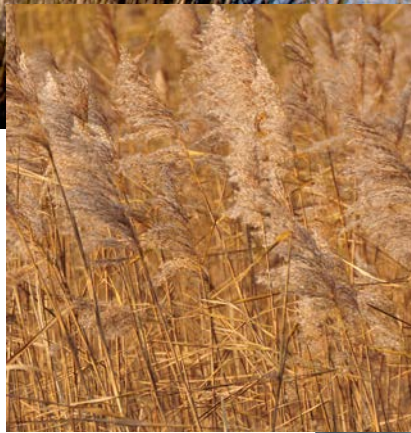


Marsh Tide

Inspired by
the Saltmarsh Collection

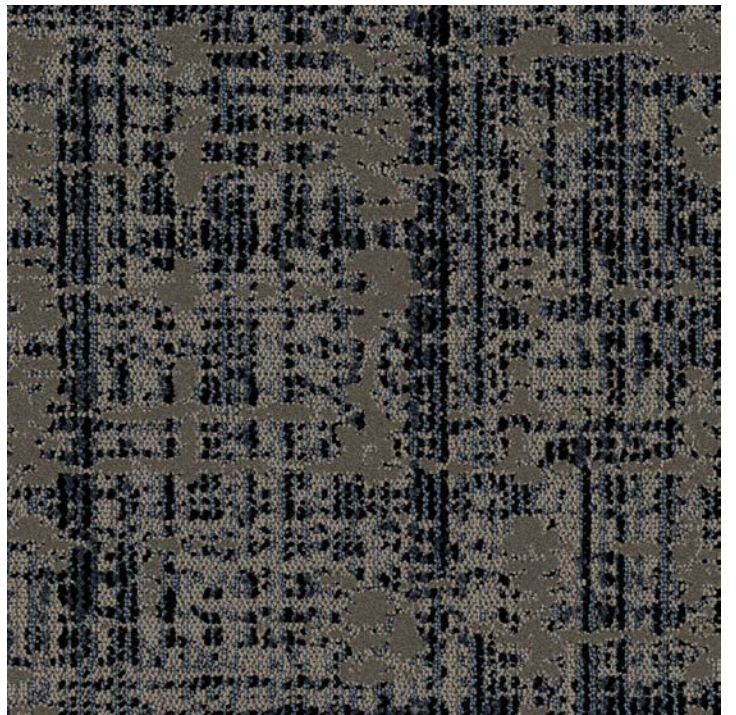
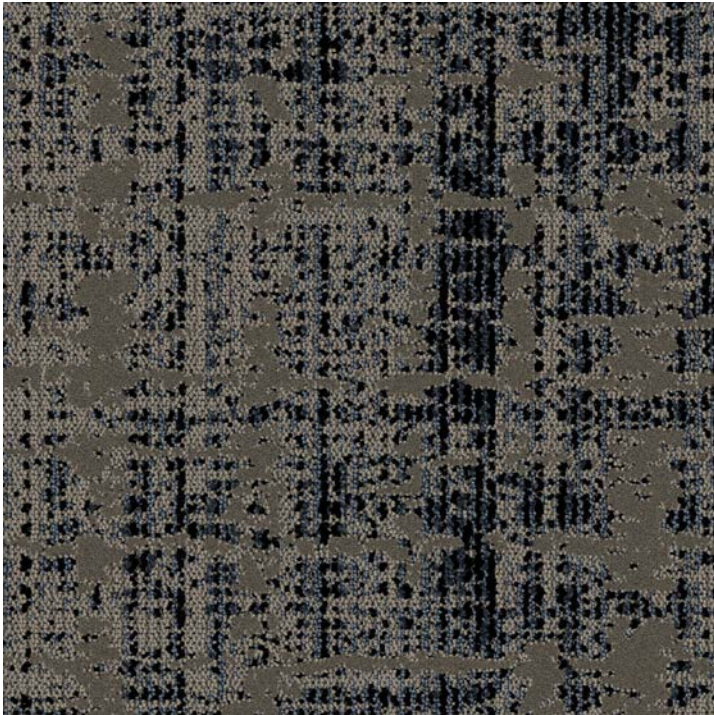
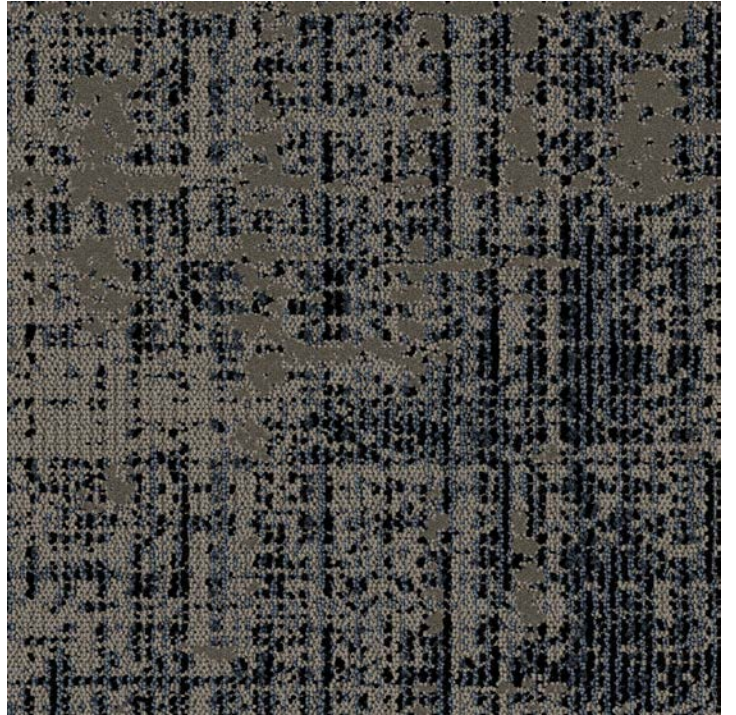
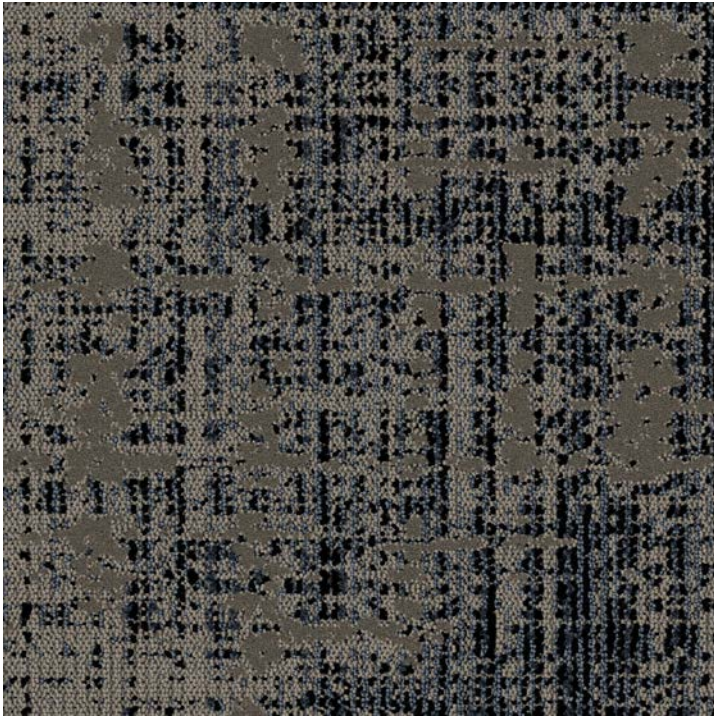


Nature provides a seemingly endless amount of inspiration, few more relaxing than saltmarsh fields that glisten in the sun with rows of reeds protruding from the dense growth.



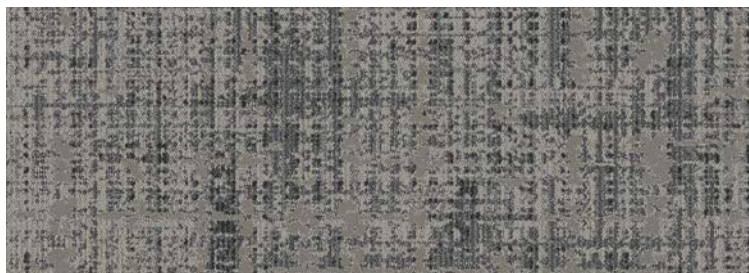
Marsh Tide Tile is perfect for crafting a neutral plane interspersed with naturally occurring pops of interest along the way. This cool, adaptable visual evokes a sense of serenity and mirrors it's real-life counterpart with channels and levels woven into the carpet like the gradual ebb and flow of a low-country tide.





W2001 | Color 169 Shoreline | 24" x 24" | Vertical Ashlar

Marsh Tide - w2001 COLORWAYS



168 Sand

- A 8520
- B X391
- C 8517



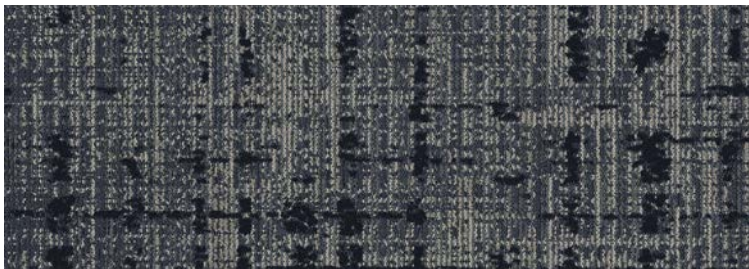
169 Shoreline

- A 3510
- B X427
- C 8002



828 Storm

- A 8517
- B 3510
- C X432



861 Deep Sea

- A 8518
- B 8510
- C 8520

Technical Detail

Product Type:
Dynamics Tile

Tile Size:
24" x 24" | 9" x 36" | 18" x 36"

Primary Backing:
Woven Polypropylene

Secondary Backing:
Ethos with Omnicoat Backing

Construction:
Multi-Level Cut/Loop

Fiber Content:
CF Lextron Enviro-Green Nylon

Tufted Weight:
22 oz. | sq. yd.

Total Weight:
100 oz.

Finished Pile Thickness:
0.218"

Suggested Installation:

24x24
Ashlar
Random
1/4 Turn

18x36 / 9x36
Ashlar
Herringbone
Basketweave
Half Basket
Boxed In
Stagger

Titan Moon

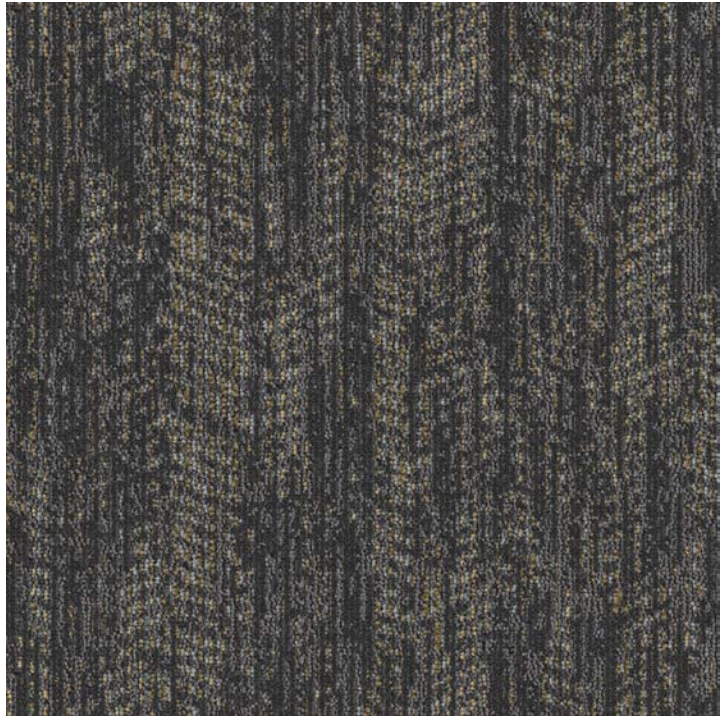
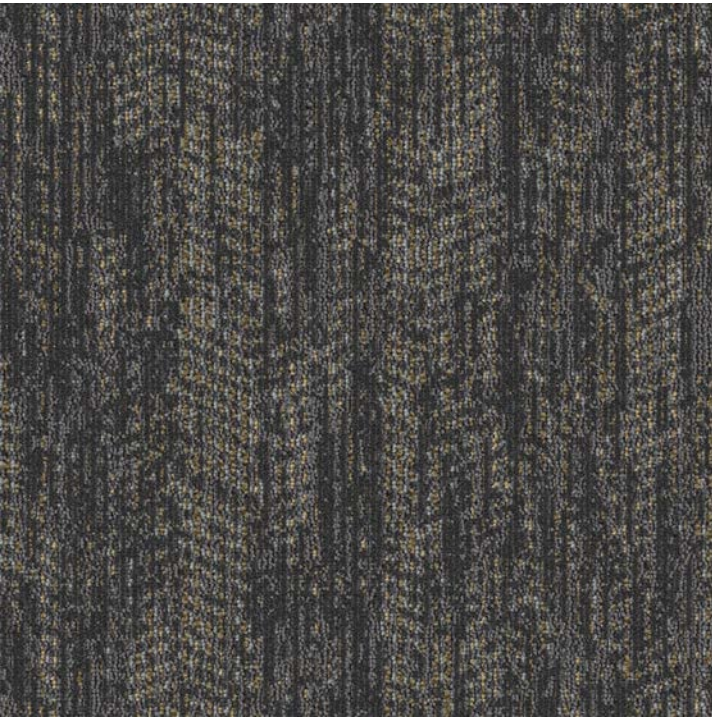




Inspired by the Stellar Collection

The comforting presence of celestial bodies that shimmer across the night sky follow us wherever we travel, and peak through layers of the galaxy to reveal their familiar luminescence.

With an atmosphere of cosmic tranquility, **Titan Moon Tile** expresses a deep color foundation to symbolize the ever-wide galaxy while brighter interwoven yarns come out to play like the stars in the sky. Ultimately, these relaxing surfaces influenced by the gridded network of space, combine pattern and interstellar eccentricity to make the great big world feel just a little more familiar.



W1001 | Color 812 Meteorite | 24" x 24" | Vertical Ashlar

Titan Moon - w1001 COLORWAYS



241 Solar Dust

- A** 7513
- B** 2507
- C** 7506



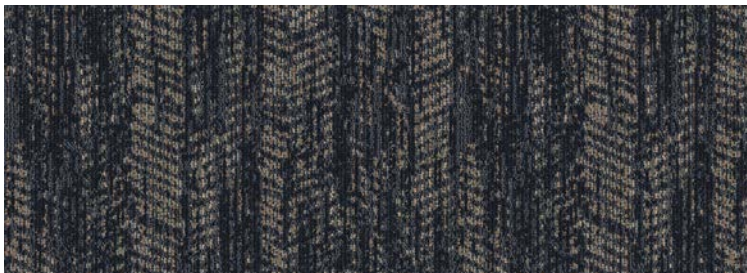
281 Northern Lights

- A** 7508
- B** X391
- C** 4089



812 Meteorite

- A** 8517
- B** X333
- C** X392



821 Starry Night

- A** 8518
- B** X399
- C** 8501

Technical Detail

Product Type:
Dynamics Tile

Tile Size:
24" x 24" | 9" x 36" | 18" x 36"

Primary Backing:
Woven Polypropylene

Secondary Backing:
Ethos with Omnicoat Backing

Construction:
Multi-Level Cut/Loop

Fiber Content:
CF Lextron Enviro-Green Nylon

Tufted Weight:
22 oz. | sq. yd.

Total Weight:
100 oz.

Finished Pile Thickness:
0.239"

Suggested Installation:

24x24
Ashlar
Random
1/4 Turn

18x36 / 9x36
Ashlar
Herringbone
Basketweave
Half Basket
Boxed In
Stagger

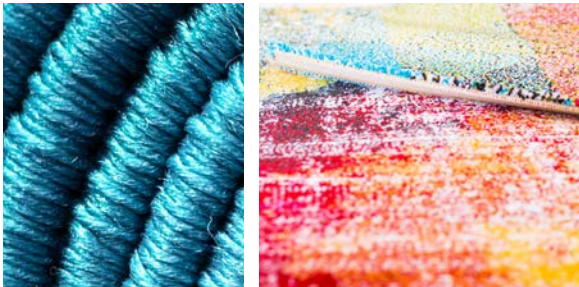
Customization



To help craft truly one-of-a-kind spaces and create memorable impressions that resonate, Gold Ore, Fluctuate, Titan Moon, Candere, Marsh Tide, and Deviate options are each offered in attractive curated colorways, but all can be recolored to capture a specific vision.

With superior beauty, definition, and color clarity, customized tufted or Axminster carpet tile from Tarkett Hospitality gives you the ability to differentiate and bring your unique vision to the forefront.

Work with the Tarkett Hospitality creative design team to completely customize pattern and color to create the ultimate surface for premium performance and your enhanced expression.



Endless Possibilities



Custom Axminster Tile | High Roller AT360-9

*Connect with your Sales Representative to
explore custom possibilities with carpet tile.*



285 Kraft Drive
Dalton, GA 30721
800-871-3211

www.tarkethospitality.com

©2023 Tarkett Hospitality

 **Tarkett** Hospitality